

Inclusive Cities



Enabling Inclusive Cities

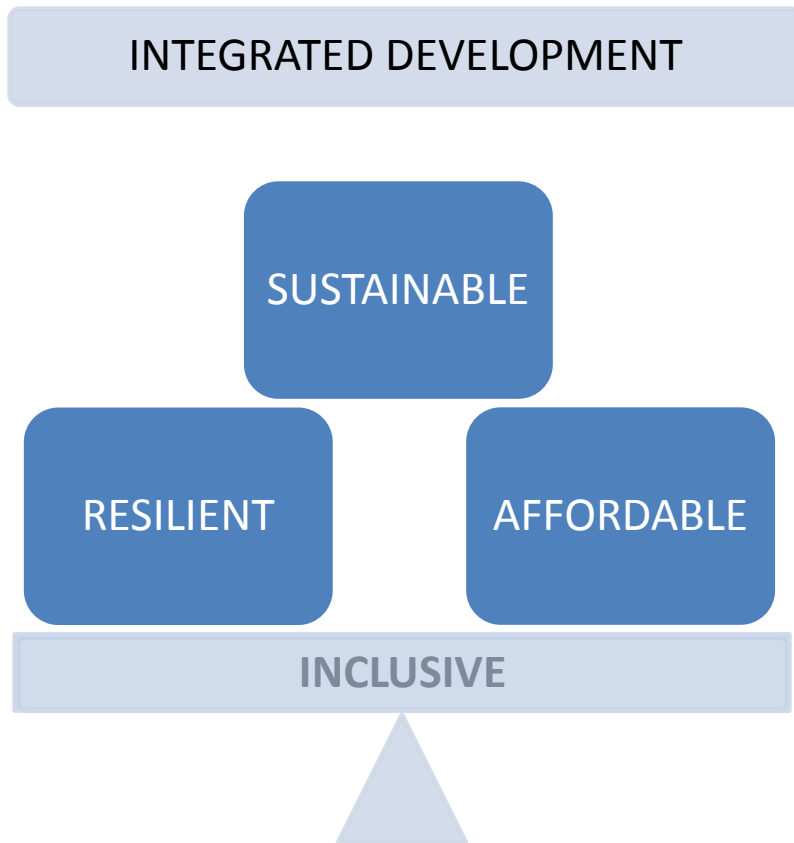
An Integrated Approach to Inclusive Urban Development

This is not an ADB material. The views expressed in this document are the views of the author/s and/or their organizations and do not necessarily reflect the views or policies of the Asian Development Bank, or its Board of Governors, or the governments they represent. ADB does not guarantee the accuracy and/or completeness of the material's contents, and accepts no responsibility for any direct or indirect consequence of their use or reliance, whether wholly or partially. Please feel free to contact the authors directly should you have queries.

Asian Development Bank

Ramola Naik-Singru
Urban Development Sp. (Consultant)
RSDD / SEUW
28th October 2013

What is “Inclusive”?



“Inclusive” urban infrastructure development is defined as **an integrated approach** encompassing **sustainable, resilient and affordable solutions** to the challenges faced by the urban poor and vulnerable groups by **enhancing their access** to urban services and infrastructure through targeted investments.

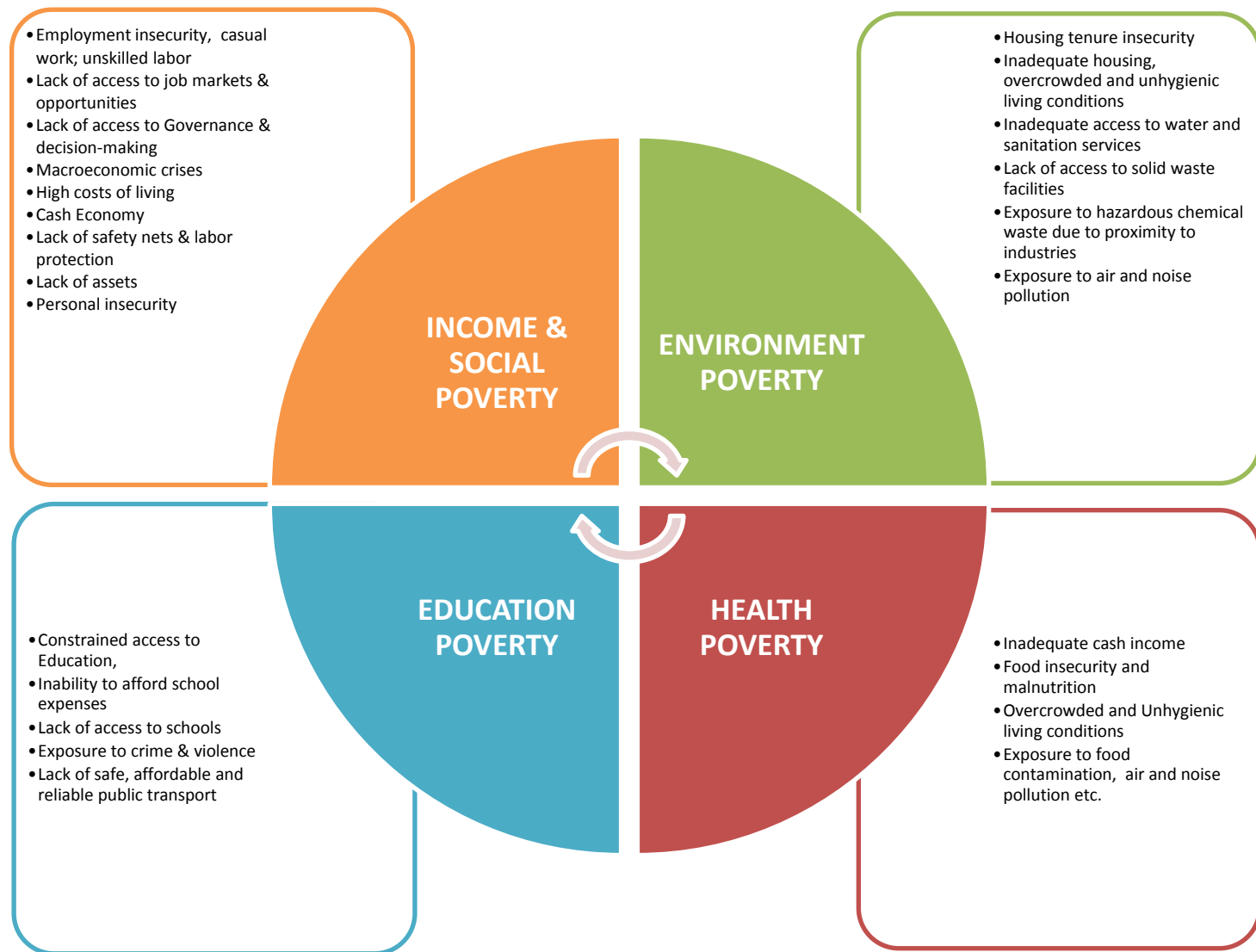
Figure 3: CRITICAL ASPECTS OF INCLUSIVE URBAN DEVELOPMENT

Inclusive Cities – definition

*A city is **Inclusive** when there is **equitable and affordable access** to urban infrastructure, land, housing, social services and livelihood opportunities. Urban infrastructure includes water supply, sanitation, solid waste management, urban access roads and transport facilities, services are typically health and education.*

*The inclusive city is built on joint strategic visions through a **participatory** planning and decision-making process shared between government, communities, civil society, and private sector. It offers adequate **social protection** for its constituents (systems for upholding children and juvenile, women, and indigenous peoples' rights), and **resilient** to environmental challenges (climate change and disaster vulnerabilities).*

Figure 2: DIMENSIONS OF URBAN POVERTY



Source: Ramola Singru, Adapted from World Bank, 2002, *A Sourcebook for Poverty Reduction Strategies*, Vol. 2, Washington DC.

Figure 4 : INCLUSIVE URBAN REDEVELOPMENT APPROACH

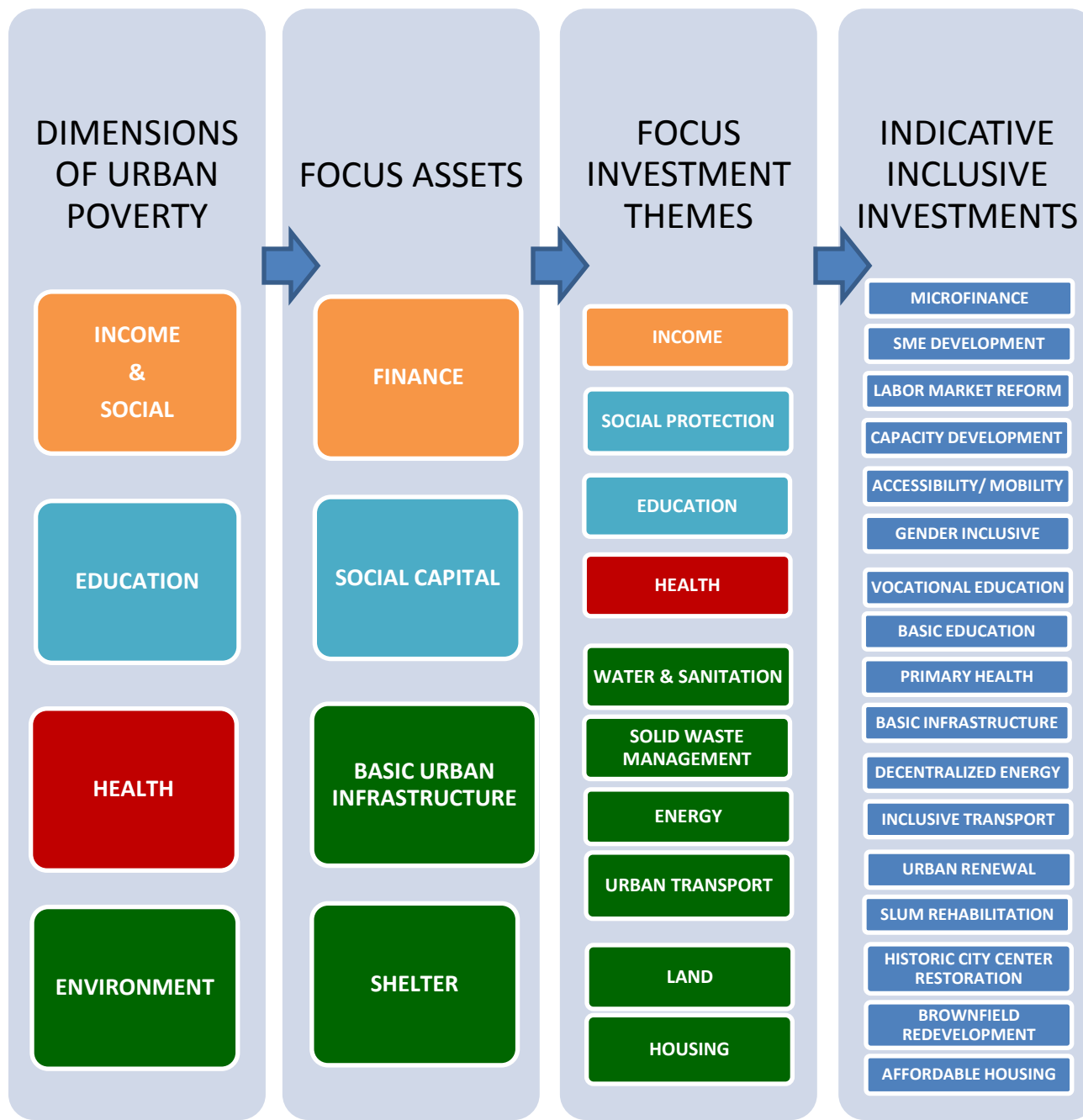


Figure 4 : INCLUSIVE URBAN REDEVELOPMENT APPROACH

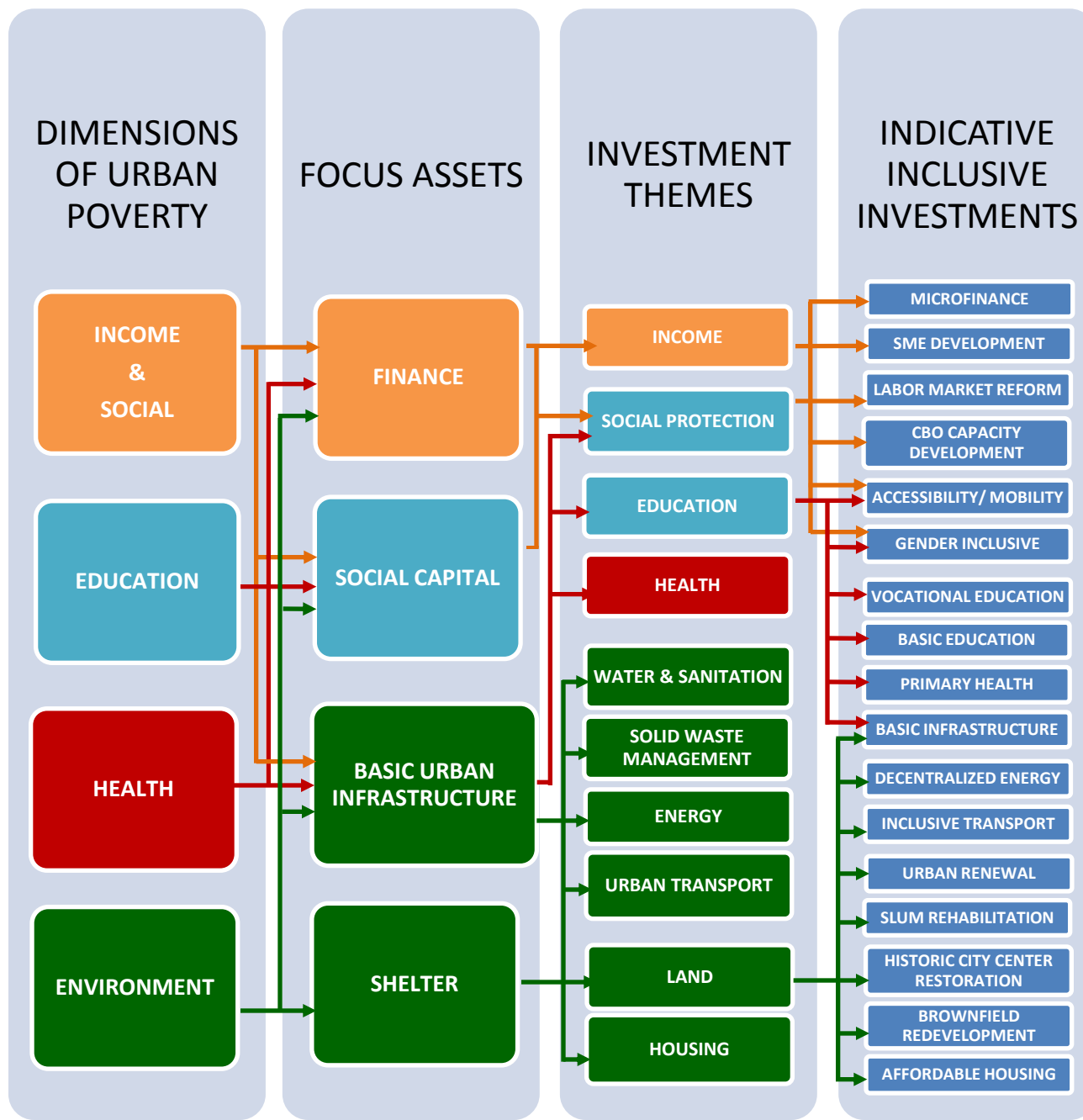


Figure 1: PROCESS FLOW FOR INTEGRATED URBAN DEVELOPMENT ASSESSMENTS

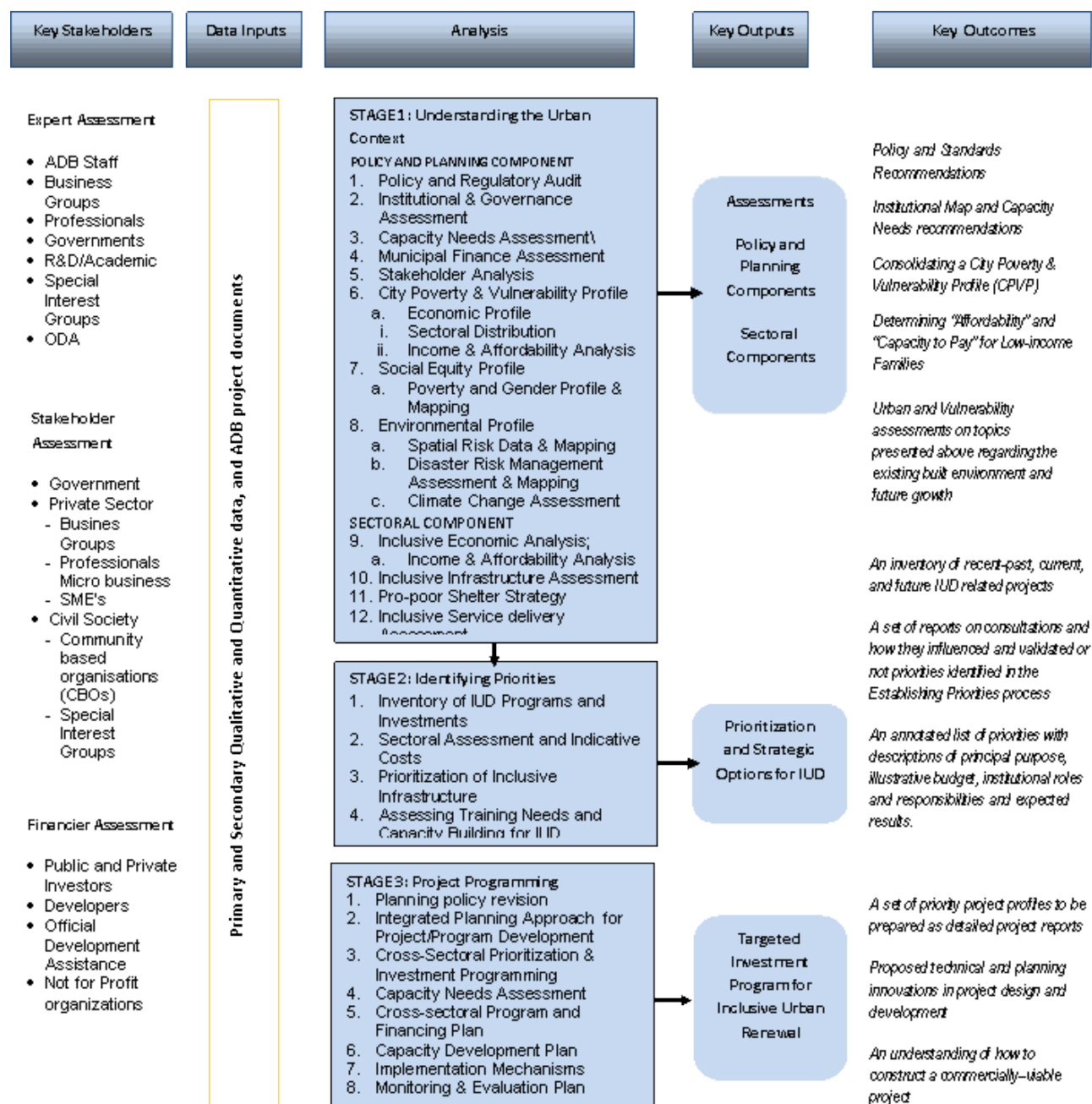


Figure 7: FRAMEWORK FOR UNDERSTANDING THE URBAN CONTEXT

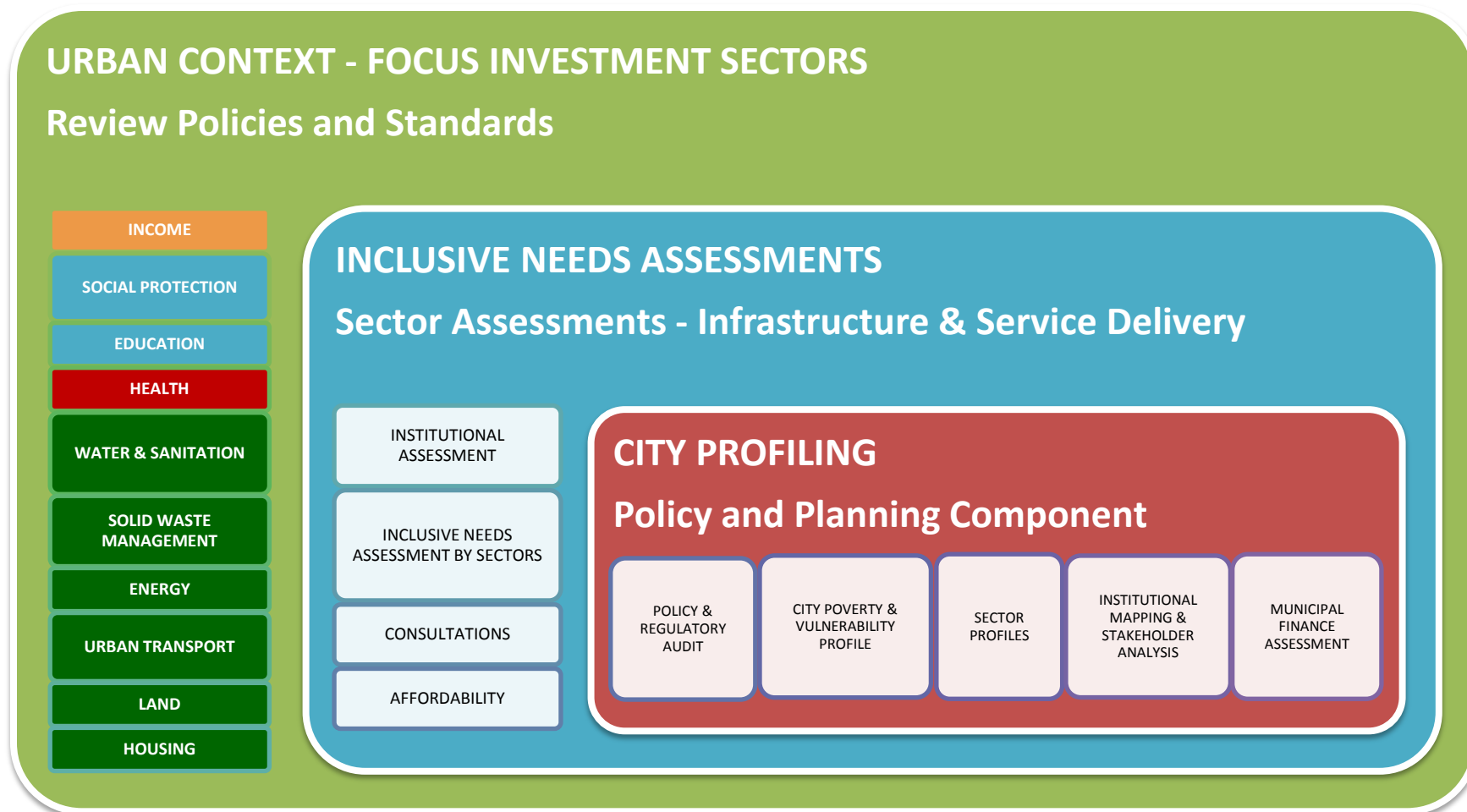


Figure 8: SECTOR ASSESSMENTS AND OPTIONS



Figure 9: APPROACH TO CROSS SECTORAL PRIORITIZATION AND PROJECT PROGRAMMING

CROSS SECTORAL PRIORITIZATION AND PROJECT PROGRAMMING

Inclusive Investment Priorities by Sector

CURRENT & PROJECTED
SHORTFALLS

POTENTIAL SOLUTIONS -
TECHNICAL OPTIONS

IMPLEMENTATION
OPTIONS- INSTITUTIONAL

IMPLEMENTATION
OPTIONS - FINANCIAL

PROJECT PROGRAMMING

Cross-sectoral Prioritization and Investment Programming

PLANNING POLICY REVISION

PROJECT/PROGRAM
DEVELOPMENT

CROSS-SECTORAL
PRIORITIZATION

REVENUE & BUDGET
CONSTRAINTS

CAPACITY NEEDS ASSESSMENT

INCLUSIVE URBAN RENEWAL PROGRAM

Cross-sector Investment Program

CROSS-SECTORAL
PROGRAM AND
FINANCING PLAN

CAPACITY DEVELOPMENT
PLANS

IMPLEMENTATION
MECHANISMS- FINANCE &
INSTITUTIONAL

MONITORING AND
EVALUATION PLAN

Figure 5: PROCESS FLOWCHART: POLICY AND PLANNING COMPONENT

- [INCL CITIES FINAL FILES\Figure 5 & 6 Inclusive Cities Toolkit.docx](#)

Towards Inclusive Growth!



Urban Sector Investments

