

RELOCATION, RESETTLEMENT & REHABILITATION CITY OF MANDALUYONG

**PASIG RIVER FORUM
ADB HEADQUARTERS, MANILA
APRIL 24, 2012**

This is not an ADB material. The views expressed in this document are the views of the author/s and/or their organizations and do not necessarily reflect the views or policies of the Asian Development Bank, or its Board of Governors, or the governments they represent. ADB does not guarantee the accuracy and/or completeness of the material's contents, and accepts no responsibility for any direct or indirect consequence of their use or reliance, whether wholly or partially. Please feel free to contact the authors directly should you have queries.

CONTENTS:

- Description of the City and Issues and Concern
- Programs Implemented
- Proposed Projects

BULACAN

QUEZON CITY

**METRO
MANILA**

SAN JUAN

LOCATION

- Surrounded by business centers
- At the cross-roads of major transport network
- Lies atop bedrock foundation

Manila Bay

PASIG

RIZAL

MANILA

**MANDALUYUNG
CITY**

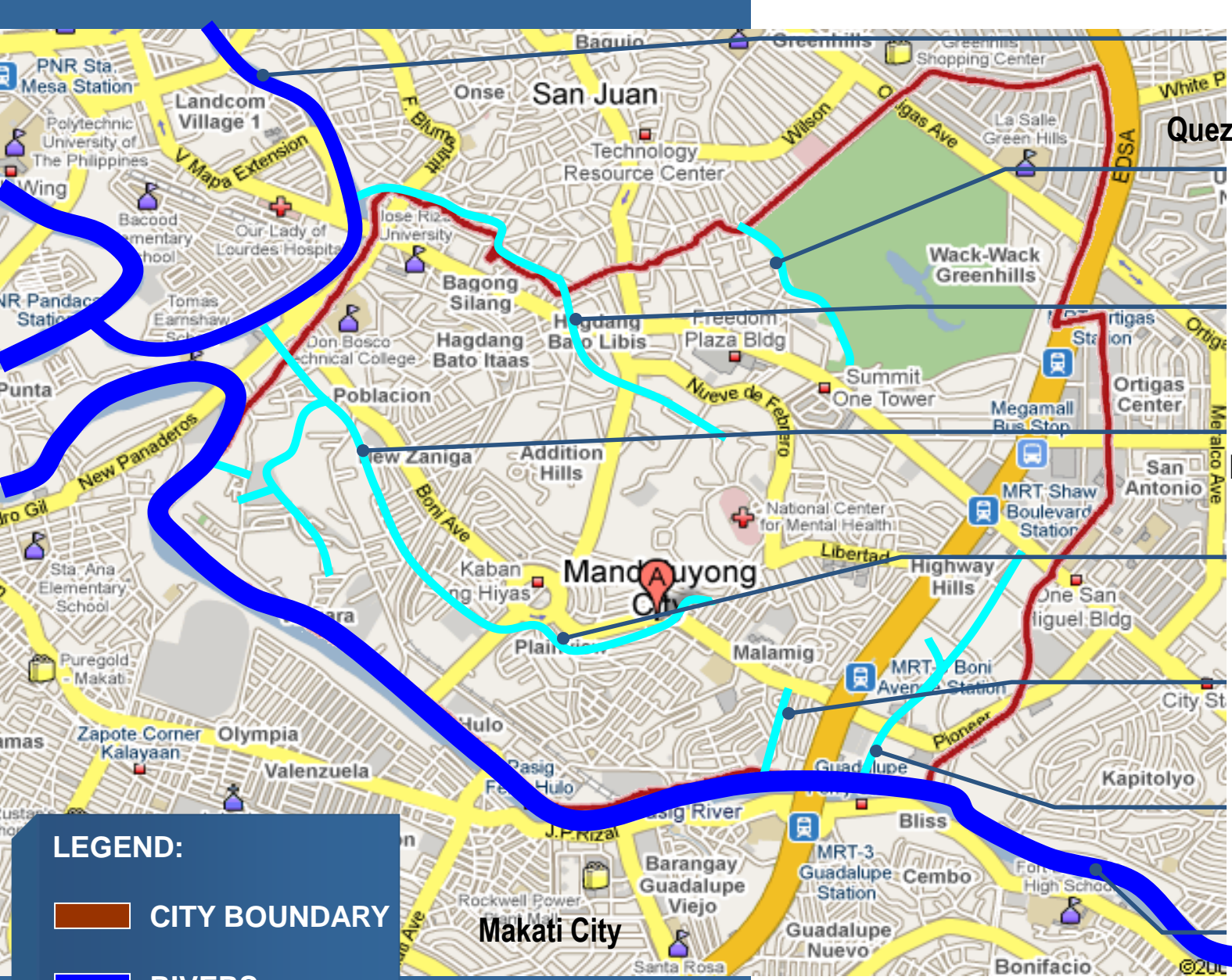
MAKATI

Laguna de Bay

CAVITE

LAGUNA





San Juan River

Ermitaño Creek

Maytunas Creek

Buhangin Creek

Maysilo Creek

Mayon Creek

Buayang Bato Creek

Pasig River

LEGEND:

- CITY BOUNDARY
- RIVERS
- CREEK

SOCIO-ECONOMIC PROFILE

Physical/Geographic Characteristics

Land Area	: 1,126 has
No. of Barangays	: 27
Population 2007	
Night Time	: 305,576
Day time (Source: PNP)	: 1.2 m
Population Growth Rate	: 1.29
Labor Force	
Oct. 2009	: 61.6%
2010	: 62.20%
Employment Rate	
Oct. 2009	: 84.7% of LF
2010	: 89.10% of LF
Unemployment Rate	
Oct. 2009	: 15.3% of LF
2010	: 10.90% of LF
Poverty threshold NCR by Geographical District (5 family members)	: P6,650/mo.
Average Family Income	: P8,250.85
Business & Industry	
Total no. of Business Establishments (BPLO/as of April 2011)	: 22,709
Sources of Revenue (2010)	: 2,049,986,509.63
Structure/Infrastructure Facilities	
No of Private Colleges/Universities	: 4
No. of Public Schools	: 17 Elem./ 7H.S.
No. of Hospitals	: 2 Private
(MCMC/ 150 Bed Capacity)	: 1 Gov't
No. of Public Health Centers	: 26
Road Density (Standard =1 km/100 has)	: 9.96km/100 has.
No. of PUJ's	: 7,444
No. of Tricycle	: 3,819
Peace and Order Situation	
Crime Solution Efficiency Rate 2010	: 92%
PNP Stations	: 1 HQ / 7 PCP

ISSUES AND CONCERN:

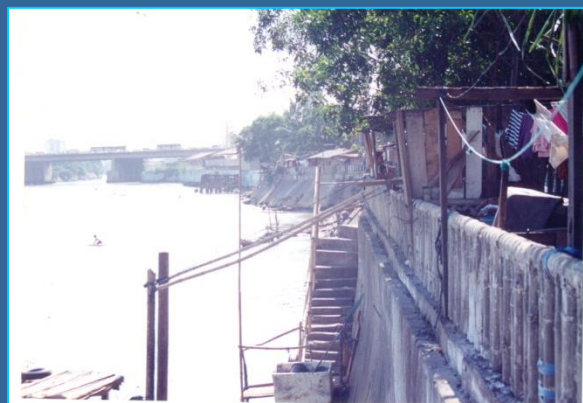
- Informal settlers
- Illegal dumping of garbage along waterways
- Polluted water
- Heavily silted waterways
- Flooding

II. PROGRAMS IMPLEMENTED

1. Relocation of Informal Settlers

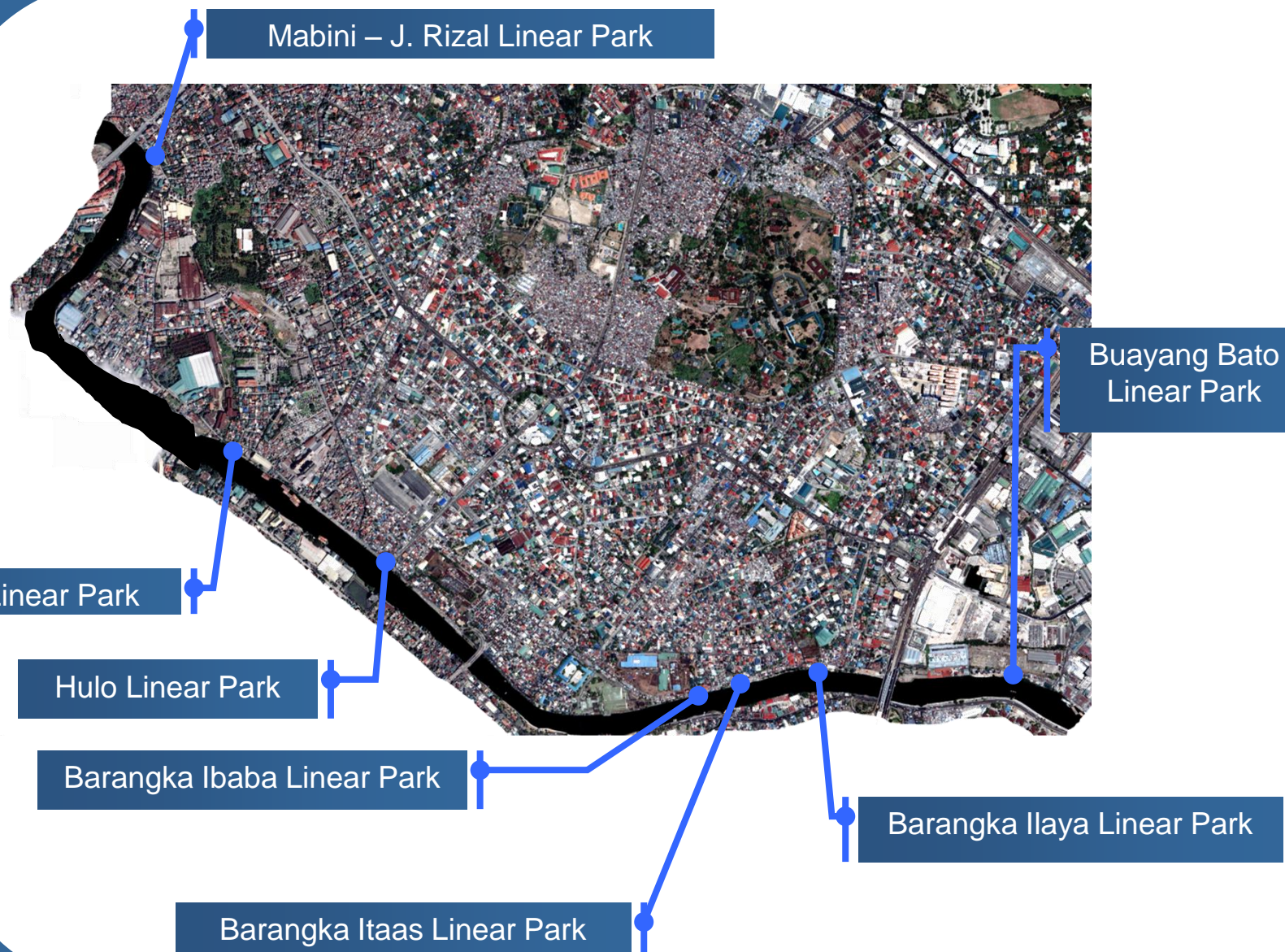
No. of ISF's Relocated & Resettled

Batch No.	No of Families	Date of Relocation	Place of Relocation
First Batch	298	1999	Summerfield Subd. Trece Martirez, Cavite
Second Batch	60 2	2004 2004	- do - Balik Probinsiya
Third Batch	37	2004	Rodriguez, Rizal
Kalentong-San Juan	5	2009	Rodriguez, Rizal
TOTAL	402		



2. Development of Easement and Areas Vacated by Informal Settlers

LOCATION MAP



DEVELOPMENT OF LINEAR PARKS



VERGARA LINEAR PARK



Buayang Bato



MABINI-J. RIZAL PARK



BARANGKA ILAYA

Continuation...



BARANGKA ITAAS



BARANGKA IBABA



MABINI J. RIZAL



HULO



TOTAL AREA DEVELOPED AS LINEAR PARK

Barangay	Area	Linear Meter
Buayang Bato	1,906 sq.m	276 m
Barangka Ilaya	5,240 sq.m	410 m
Barangka Itaas	2,150 sq.m	167 m
Barangka Ibaba	1,500 sq.m	259.22 m
Hulo	4,247 sq.m	1,311 m
Vergara		
Phase 1	530.8 sq.m	52 m
Phase 2	1,705 sq.m	163 m
Mabini J. Rizal	1,451 sq.m	45.50 m
TOTAL	18,730 sq.m	2,683.72 m.

3. Clean-up & Dredging of Creeks/Esteros



Before



After

1. Maytunas Creek
2. Buhangin Creek
3. Maysilo Creek

III. PROPOSED PROJECTS

	PROJECT TITLE & DESCRIPTION	LOCATION	TARGET BENEFICIARIES	BUDGET COST	IMPLEMENTING AGENCY	IMPLEMENTATION DATE
1	Relocation of Informal Settler Families (ISF) – Maytunas Creek	Brgys.: Daang Bakal Hagdang Bato Libis Bagong Silang	56	P± 400,000.00	LGU	2012-2015
2	Relocation of ISF – Buhangin Creek (back of M.E.S.)	Brgy. Poblacion	50	P± 400,000.00	LGU, National Agencis (NHA, MMDA)	2012-2015
3	In-City Relocation (MRH)	Fabella Rd., Brgy. Hagdang Bato Libis	59	P± 36 M.	LGU, NGA & NGO	2012-2015
4	Off-Site Relocation	To be Identified by NGA	50	To be provided by NGA	LGU, NGA	2012-2015
5	Maintenance & Clean-up of Creeks and Canals	Creeks & drainage system	27 Barangays	P± 20 M. - 2013 P± 20 M. - 2015	LGU	2012-2015

1. Relocation of Informal Settler Families (ISF) – Maytunas Creek



Maytunas Creek

2. Relocation of ISF – Buhangin Creek (back of M.E.S.)



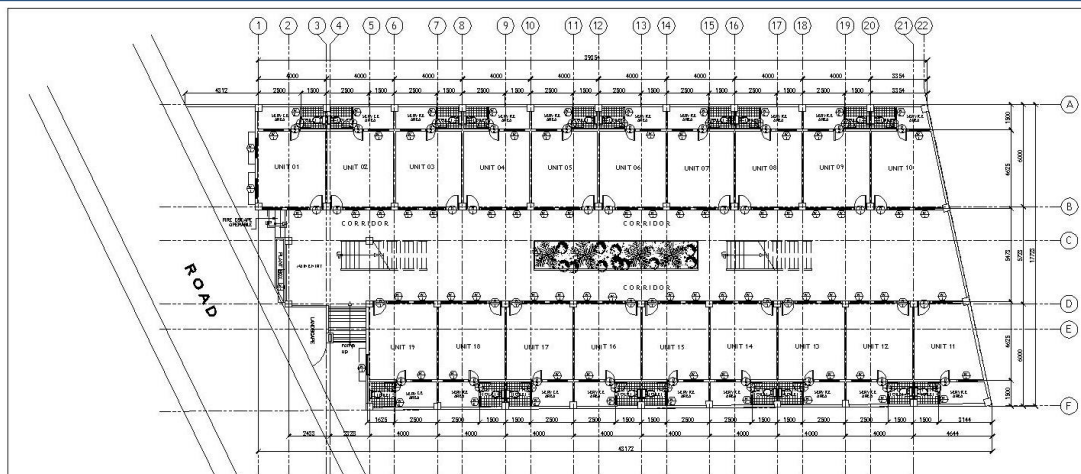
Buhangin Creek

3. In-City Relocation (MRH)



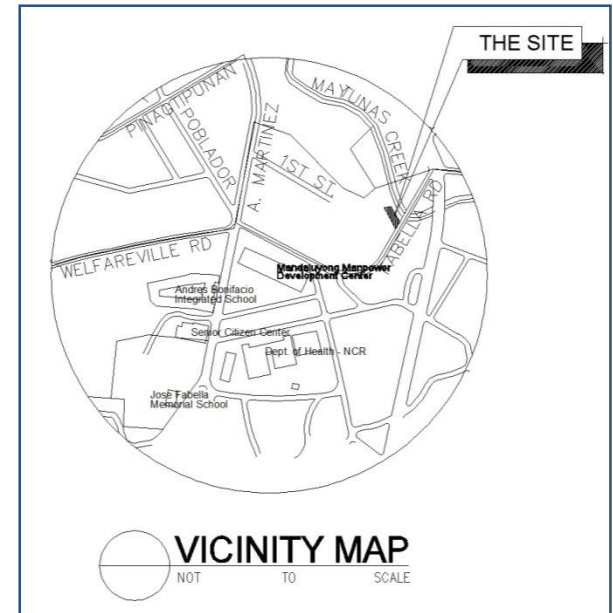
PERSPECTIVE

FABELLA MEDIUM-RISE CONDOMINIUM



GROUND FLOOR PLAN
1:100mm

FLOOR PLAN



5. Maintenance & Clean-up of Creeks and Canals

DATE	WATERWAY/ TRIBUTARY	SHOWCASE BARANGAY
1. January 14, 2012	Maytunas Creek	Addition Hills
2. January 28, 2012	Mayon Creek	Barangka Ilaya
3. February 11, 2012	Buayang Bato Creek	Buayang Bato
4. February 25, 2012	Pasig River	Barangka Ibaba
5. March 10, 2012	Maysilo/Buhangin Creek	Plainview
6. March 24, 2012	Buhangin Creek	San Jose
7. April 14, 2012	Buhangin Creek	Old Zaniga
8. April 28, 2012	Buhangin Creek	New Zaniga
9. May 12, 2012	Buhangin Creek	Poblacion
10. May 26, 2012	Buhangin Creek	Pag-Asa
11. June 9, 2012	Buhangin Creek	Mabini-J. Rizal
12. June 23, 2012	Maytunas Creek	Addition Hills
13. July 14, 2012	San Juan River	Harapin Ang Bukas
14. July 28, 2012	Pasig River	Hulo
15. August 11, 2012	Pasig River	Barangka Itaas
16. August 25, 2012	Maytunas Creek	Mauway
17. September 8, 2012	Maytunas Creek	Daang Bakal
18. September 22, 2012	Maytunas Creek	Bagong Silang
19. October 13, 2012 *	Maytunas Creek	Addition Hills, Hagdan Bato Libis
20. October 27, 2012 *	Buhangin Creek	Poblacion
21. November 10, 2012	Pasig River	Vergara
22. November 24, 2012	Pasig River	Namayan
23. December 8, 2012	Buayang Bato Creek	Highway Hills

THANK YOU!