

This is not an ADB material. The views expressed in this document are the views of the author/s and/or their organizations and do not necessarily reflect the views or policies of the Asian Development Bank, or its Board of Governors, or the governments they represent. ADB does not guarantee the accuracy and/or completeness of the material's contents, and accepts no responsibility for any direct or indirect consequence of their use or reliance, whether wholly or partially. Please feel free to contact the authors directly should you have queries.

Empowering the Backbone of Circularity

Strengthening Support for Informal Waste Workers

Dian Kurniawati

**ADB Circular Economy Forum
June 2025**

ALBA 
Treasure raw materials.









A woman wearing a black hijab and a pink patterned shirt is working in a recycling facility. She is surrounded by large piles of clear plastic bottles. In the foreground, the back of a person wearing a bright yellow hooded garment is visible. The background shows a wooden structure with more plastic waste and large white sacks.

**BEHIND EVERY KILO OF
RECYCLED PLASTIC IS A
NETWORK OF INFORMAL
WORKERS — YET THEY
REMAIN THE MOST
VULNERABLE ACTORS IN THE
CIRCULAR ECONOMY.**

ALBA Tridi Plastics Recycling Indonesia

ALBA Tridi's project is a plastics recycling plant in Kendal Industrial Park producing 36,000 tons of recycled plastics per annum

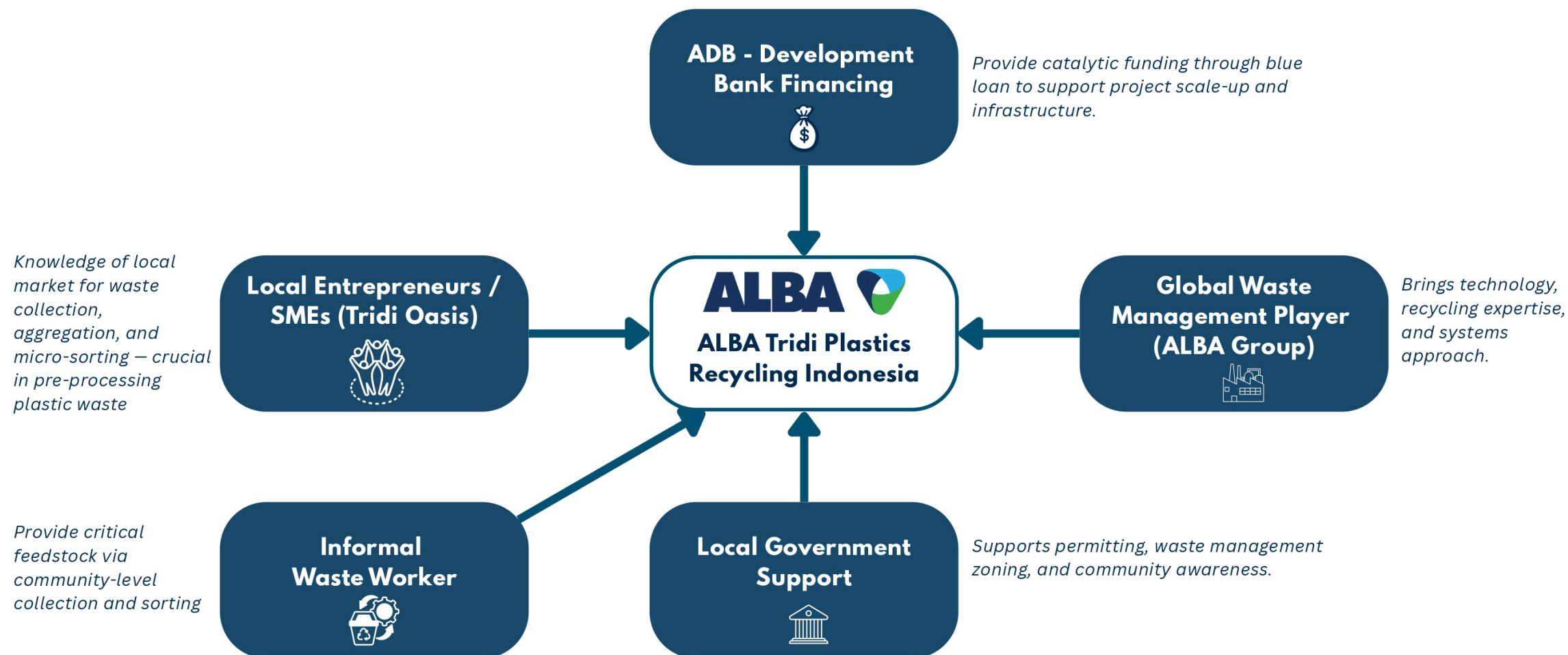
KEY PROJECT INFORMATION

	Capacity	36,000 ton p.a. output
	Project Type	Greenfield
	Potential Project Site	Kendal Industrial Park
	Feedstock	Baled post-consumer PET drinking bottles
	Product	1. Food grade rPET pellets; 2. Food grade ready flakes
	Indicative Investment	c. USD 60M

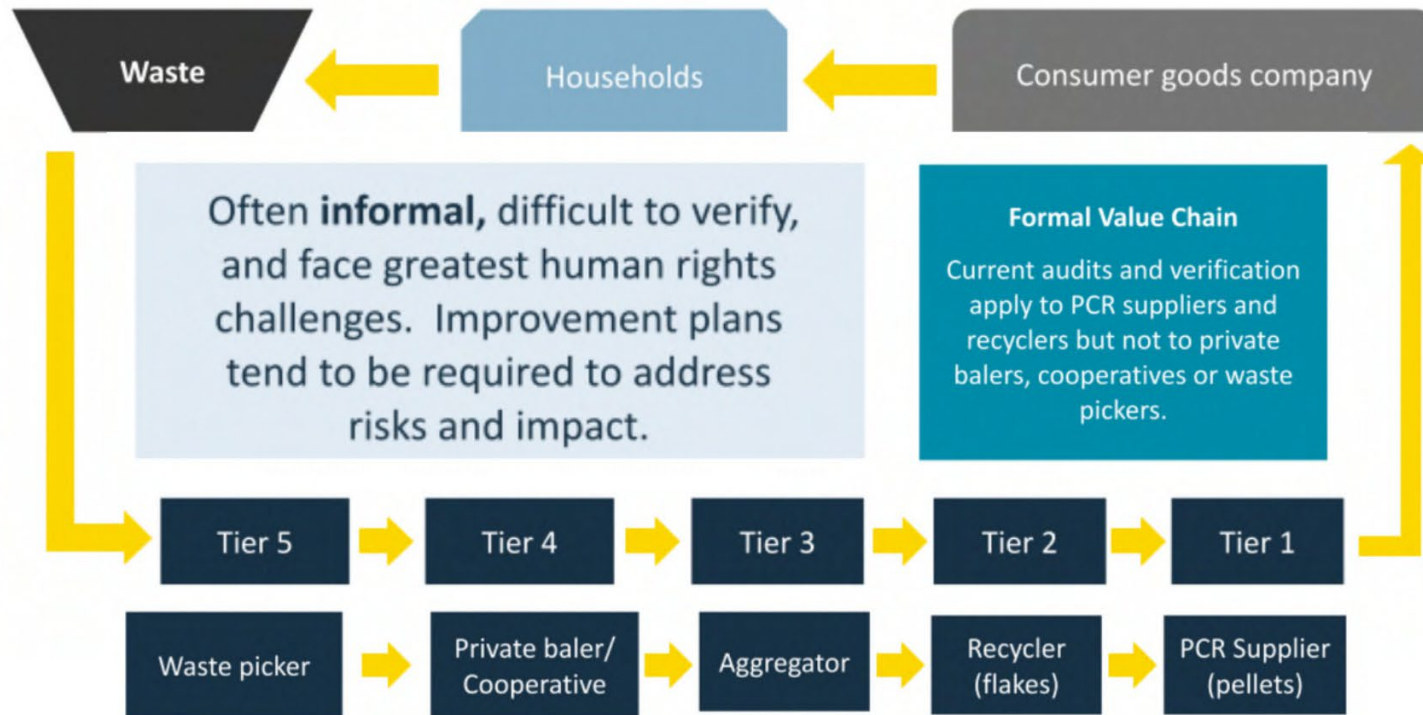
SCOPE OF OPERATION



ALBA Tridi: A Multi-Stakeholders Model for Scaling Circularity in Southeast Asia"

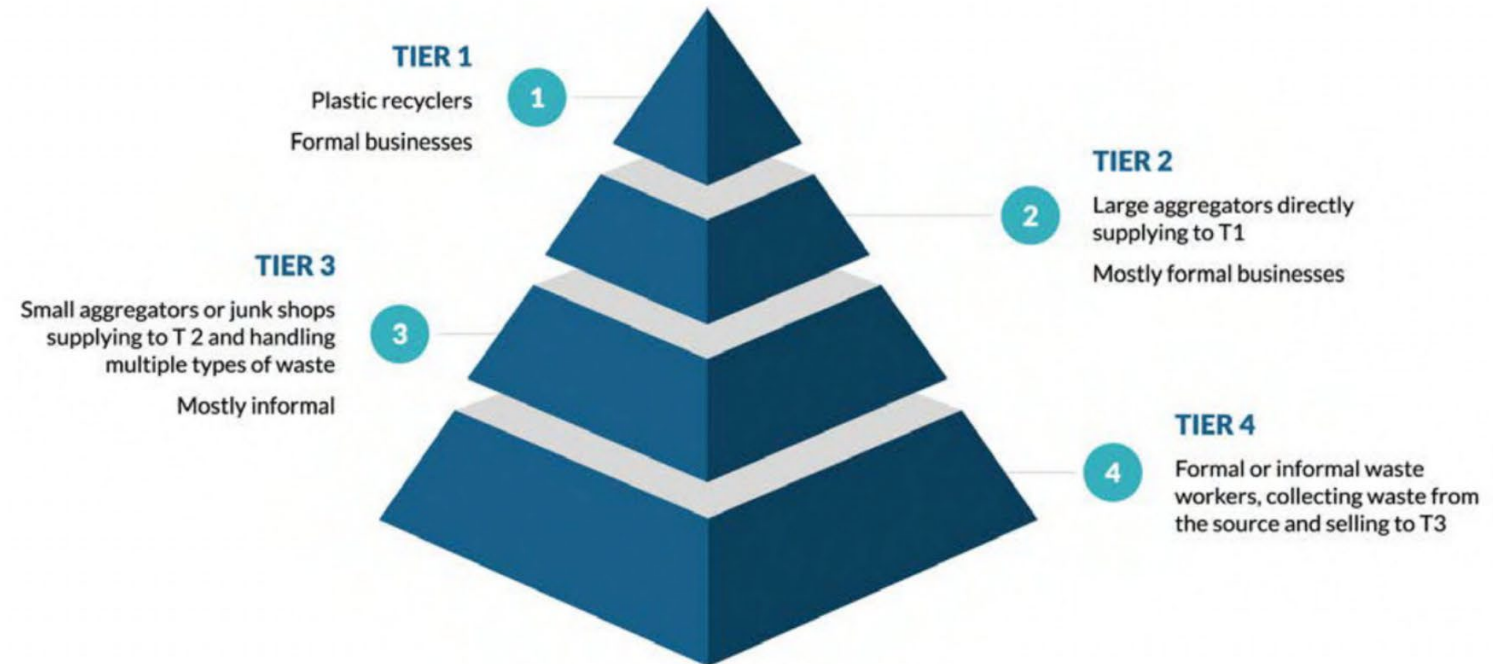


Who are the informal sector?



Why informal workers matters.

- **Informal waste workers (estimated 20 million globally, 3.7 million in Indonesia) collect ~60% of all recycled plastic.**
- **These workers face unsafe conditions, low income, exclusion from social protection, and gender inequality.**
- **Most brands do not trace the origin of recycled plastics, leading to invisibility of labor conditions in supply chains.**



The challenges they face.

- **Low, unstable income; often below minimum wage.**
- **No access to health services, insurance, or safety equipment.**
- **High exposure to hazards and pollution.**
- **Gender imbalance: many women in sorting/cleaning, unpaid or invisible roles.**
- **Lack of identity in EPR systems or policy frameworks.**



What governments & institution can prioritize.



Social Protection Access

Mobile-based enrollment into national health insurance.
Group-based registration through waste cooperatives or MRFs.



Financial Literacy & Inclusion

Partner with fintech to offer micro-savings and emergency funds.
Train waste banks and TPS3R / MRFs staff to act as community banking points.



Fair Pricing and Income Security

Introduce minimum price mechanisms for key recyclable materials and leverage technology to help standardize digital price tracking tools.

What governments & institution can prioritize.



Recognition in Policy (Inclusion in EPR)

Governments should formally register waste workers/ cooperatives as eligible collectors in EPR programs. Ensure direct benefits from brand contributions (e.g., equipment, training).



Occupational Health & Safety

Invest in PPE kits, sorting tools, and sanitation facilities.
Co-design with women workers for dignity and safety.



Capacity Building & Organizing

Fund training on material quality, sorting standards, and micro-enterprise skills.
Encourage cooperatives and associations for stronger voice in Circular Economy policy.




Turning the Tide: ADB Boosts Plastic Recycling in Indonesia



Share



Turning the Tide: ADB Boosts Plastic Recycling in Indonesia

Watch on  YouTube

<https://youtube.com/clip/UgkxR0Y9gPavCW3h6yuR7j-TwBm3T76yC2-8?si=awt6aCaqoPeqJs4vt>



Informal waste workers have helped advancing the circular economy. We need prioritizing them more in the investment and build policies that are not just inclusive, but empowering.



THANK YOU



Treasure raw materials.

