

Disclaimer: The views expressed in this presentation are the views of the author and do not necessarily reflect the views or policies of the Asian Development Bank (ADB), or its Board of Governors, or the governments they represent. ADB does not guarantee the accuracy of the data included in this presentation and accepts no responsibility for any consequence of their use. Terminology used may not necessarily be consistent with ADB official terms.

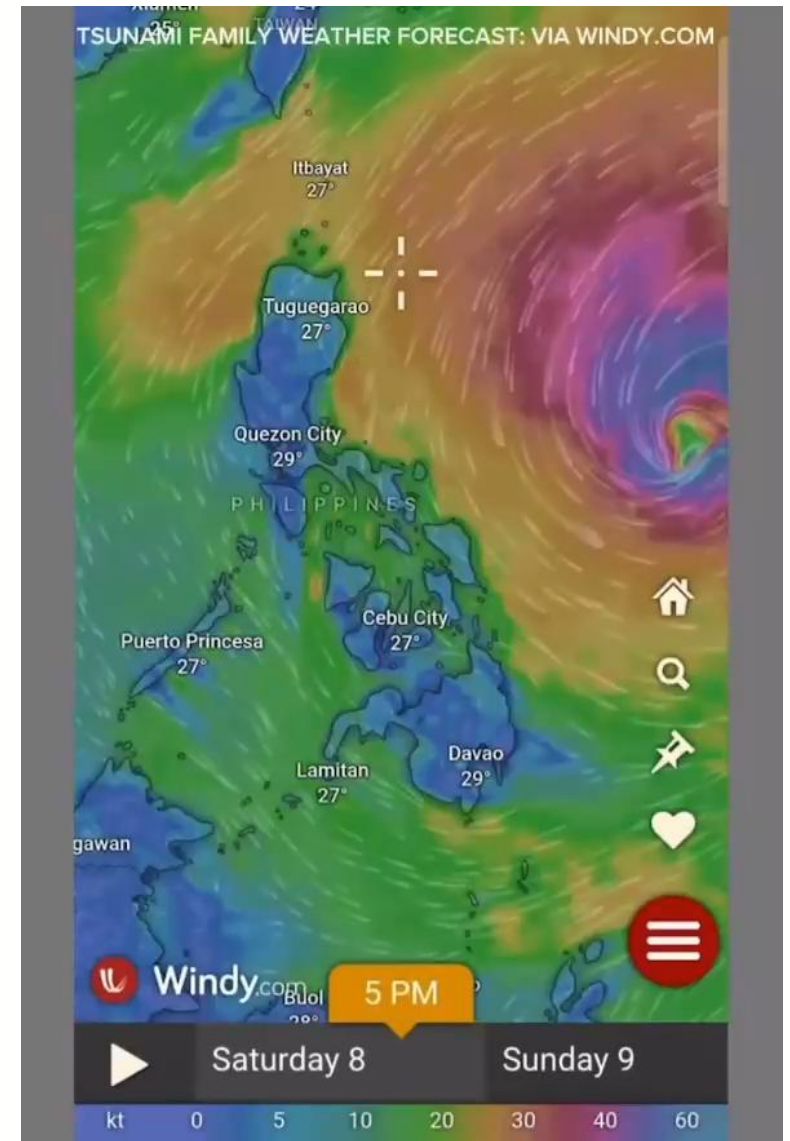
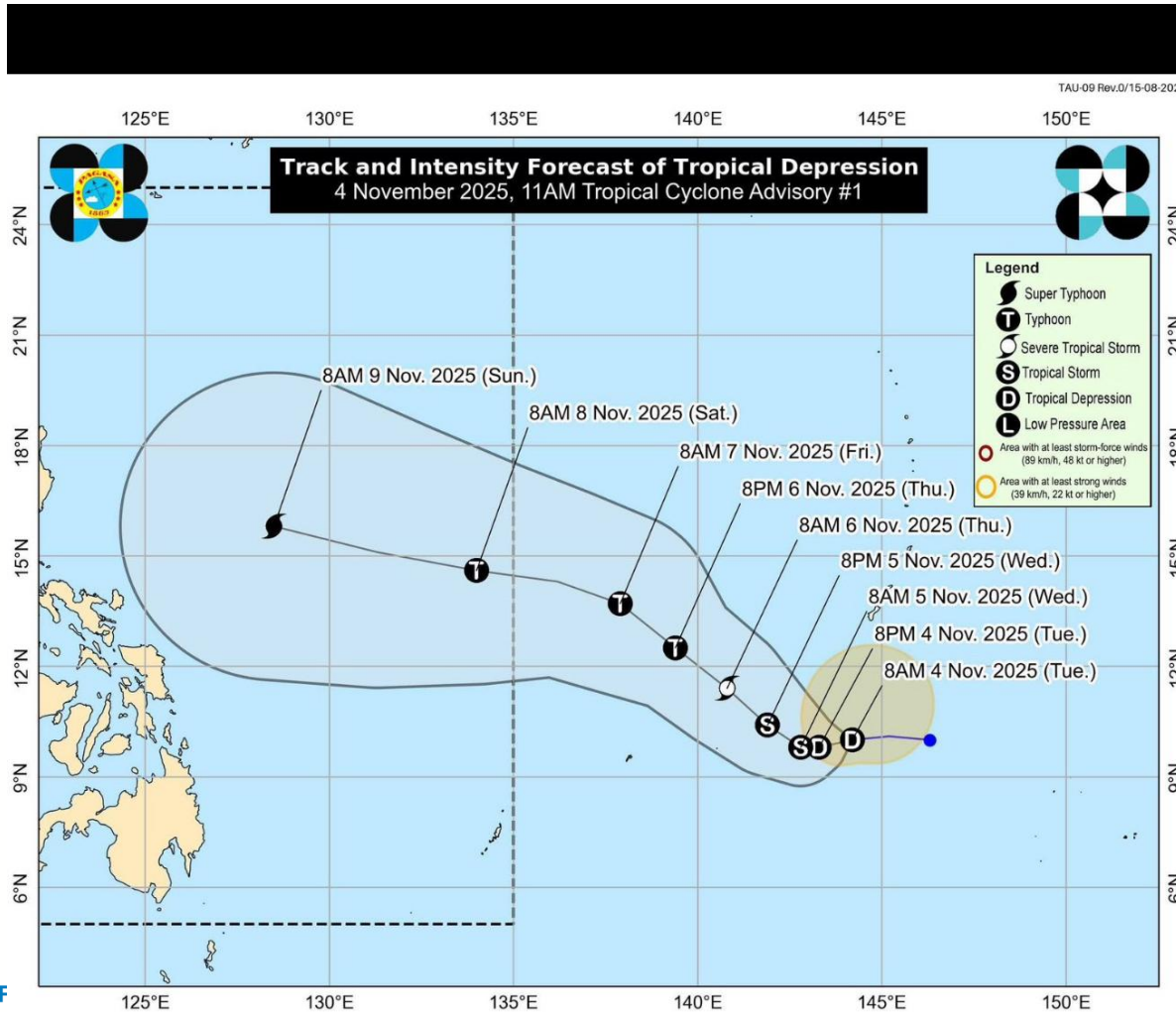


WFP Philippines

Leveraging Social Protection Systems for Shock Responsive Anticipatory Action

11 November 2025

Super Typhoon "UWAN"





How does
**ANTICIPATORY
ACTION** work?





Anticipatory action means taking action **before a disaster strikes** to protect homes, keep families safe, and safeguard livelihoods.



World Food
Programme

When triggers reach a certain level considered dangerous, **anticipatory action is activated.**

- ⚙ sustained winds are 177kph or stronger
- ⚙ typhoon to hit the area within 4-7 days



World Food
Programme



World Food
Programme

**WFP and the Department of
Social Welfare and Development**
immediately informs families
about the activation.

DSWD



World Food
Programme



World Food
Programme

**WFP sends money to bank
accounts of families under
DSWD's 4Ps in targeted areas
where the storm is projected to hit.**

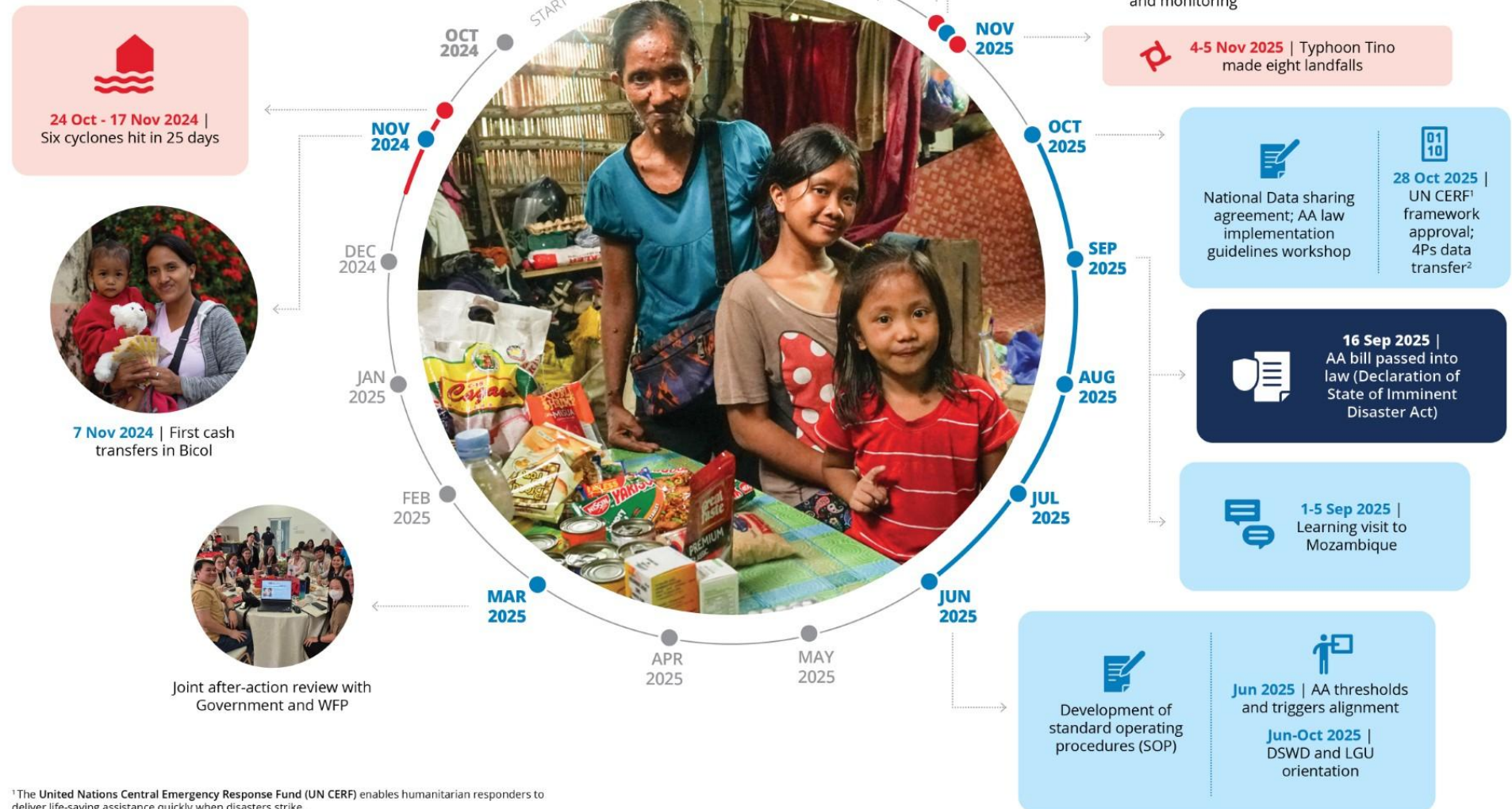


World Food
Programme

Families can **instantly
withdraw** the cash assistance
to purchase essential needs.

Families can **instantly
withdraw** the cash assistance
to purchase essential needs.

Leveraging Social Protection Systems for Shock-Responsive Anticipatory Action and Response 2024-2025



¹The United Nations Central Emergency Response Fund (UN CERF) enables humanitarian responders to deliver life-saving assistance quickly when disasters strike.
²4Ps stands for Pantawid Pamilyang Pilipino Program, the Government's flagship social protection programme.

Through Anticipatory Action, households can now take action even before disasters strike



“This will be used for medicine, food and to prepare for the coming typhoon.”

Jovelyn De Leon
4Ps member in Tuguegarao, Cagayan

FLEXIBLE DELIVERY SYSTEM TO SUPPORT VERTICAL **AND** HORIZONTAL EXPANSION

Dynamic social registry used
as a basis to quickly identify
vulnerable people/hh (current
clients or not)

Interoperable registry,
programmes and climate
information systems

Flexible payment platform and
solutions to reach **new** and
existing recipients

ENABLING POLICIES AND REGULATIONS

AA Bill translated into IRR that
specifies AA through SP

Accompanying operational
guidelines

PFM framework allows
preposition and accessing
resources prior to the shock

PROGRAMMES IN PLACE

Horizontal and vertical
expansion is achieved through
the expansion of one or a
combination of programs

SOPs in place to define
operational details

Trigger and thresholds defined

LOCAL CAPACITIES AND CENTRAL/LOCAL COORDINATION ARE IN PLACE

Roles and responsibilities are
clear between DSWD,
Regional, provincial and local
authorities

Awareness and capacities at
local level are sufficient

Institutionalizing AA through ASRSP: key workstreams

END