

The views expressed in this presentation are the views of the author/s and do not necessarily reflect the views or policies of the Asian Development Bank, or its Board of Governors, or the governments they represent. ADB does not guarantee the accuracy of the data included in this presentation and accepts no responsibility for any consequence of their use. The countries listed in this presentation do not imply any view on ADB's part as to sovereignty or independent status or necessarily conform to ADB's terminology.

CI and EWS and Gender



Ms. Jinha Kim

Gender Specialist (Climate Change)
Climate Change and Sustainable Development Department
Asian Development Bank



Strengthening Women's Resilience to Heat Stress in Asia and the Pacific

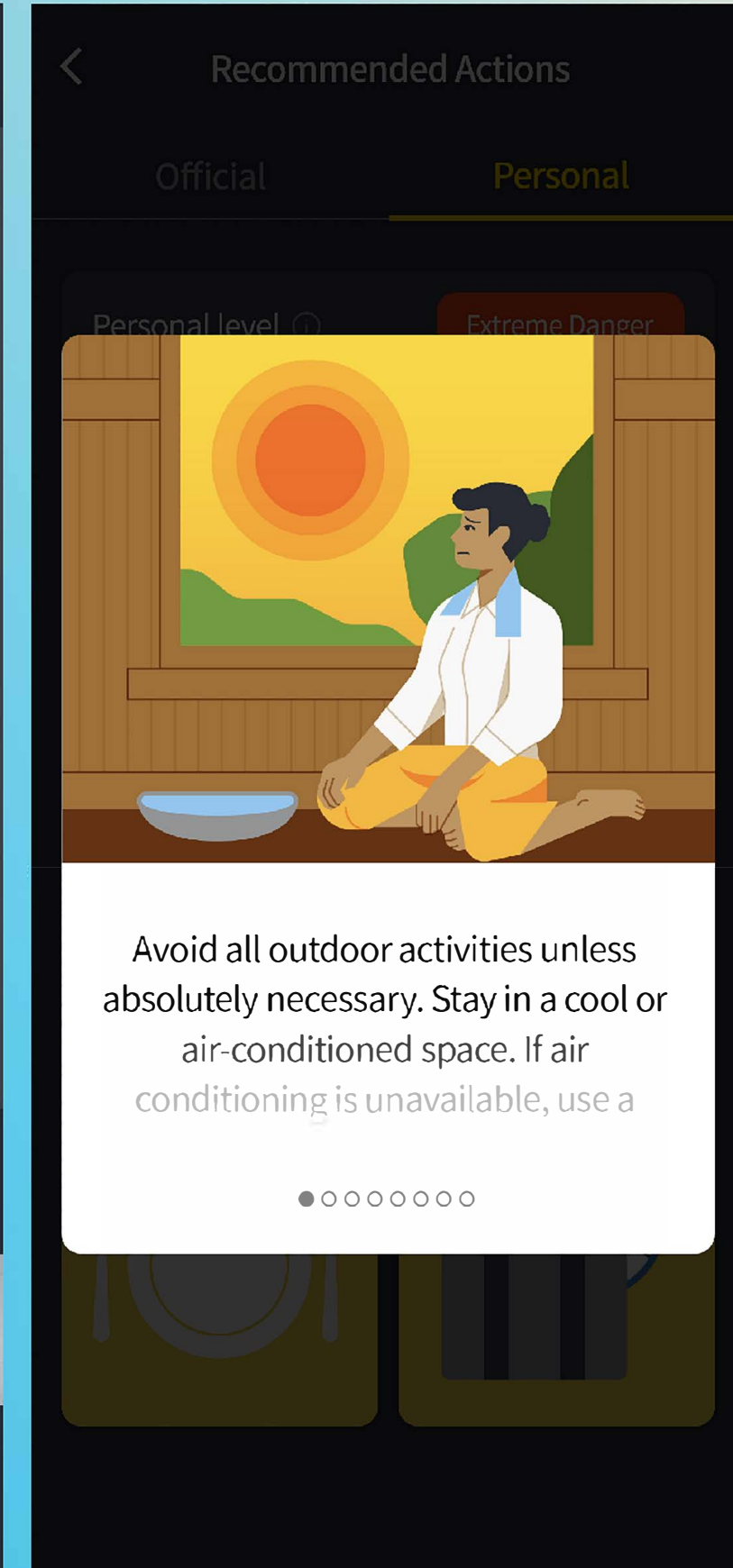
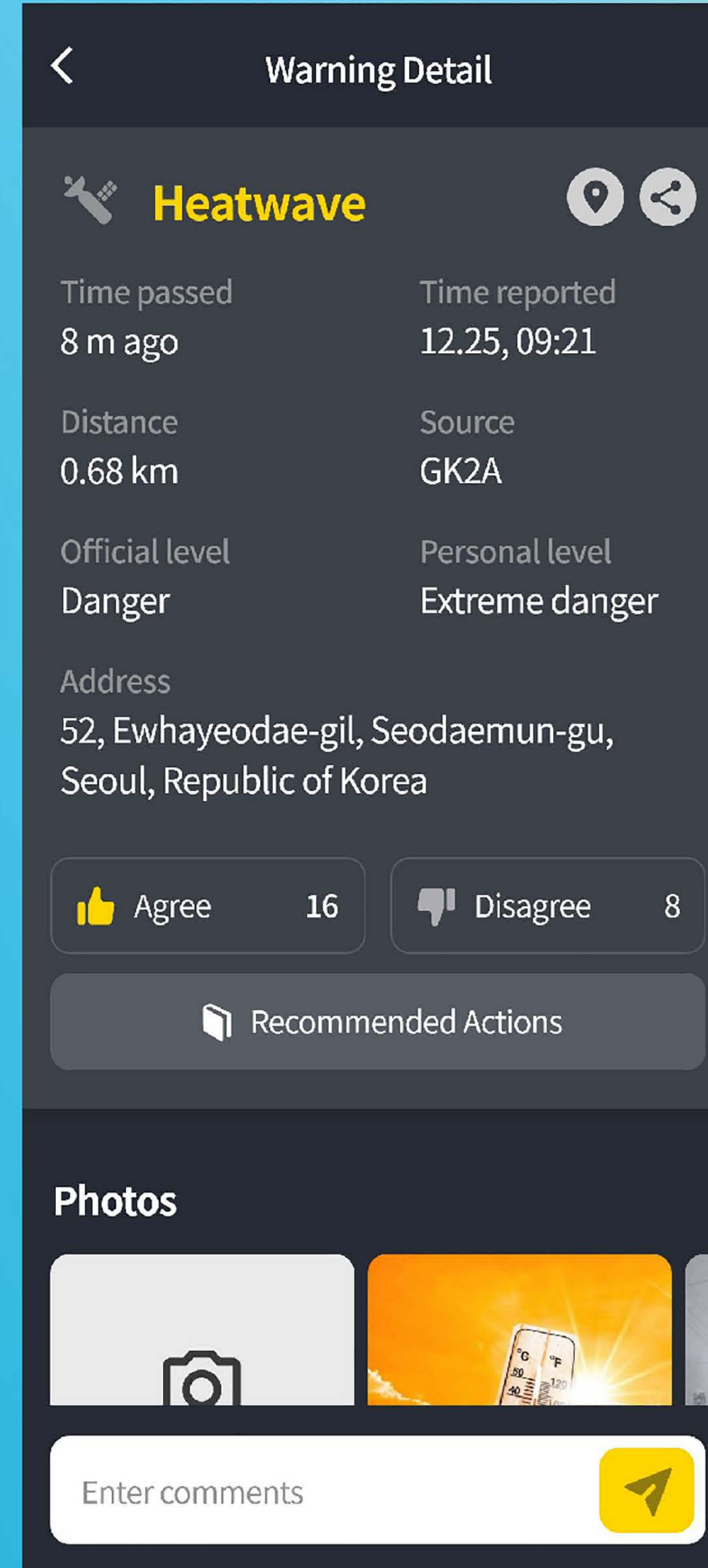
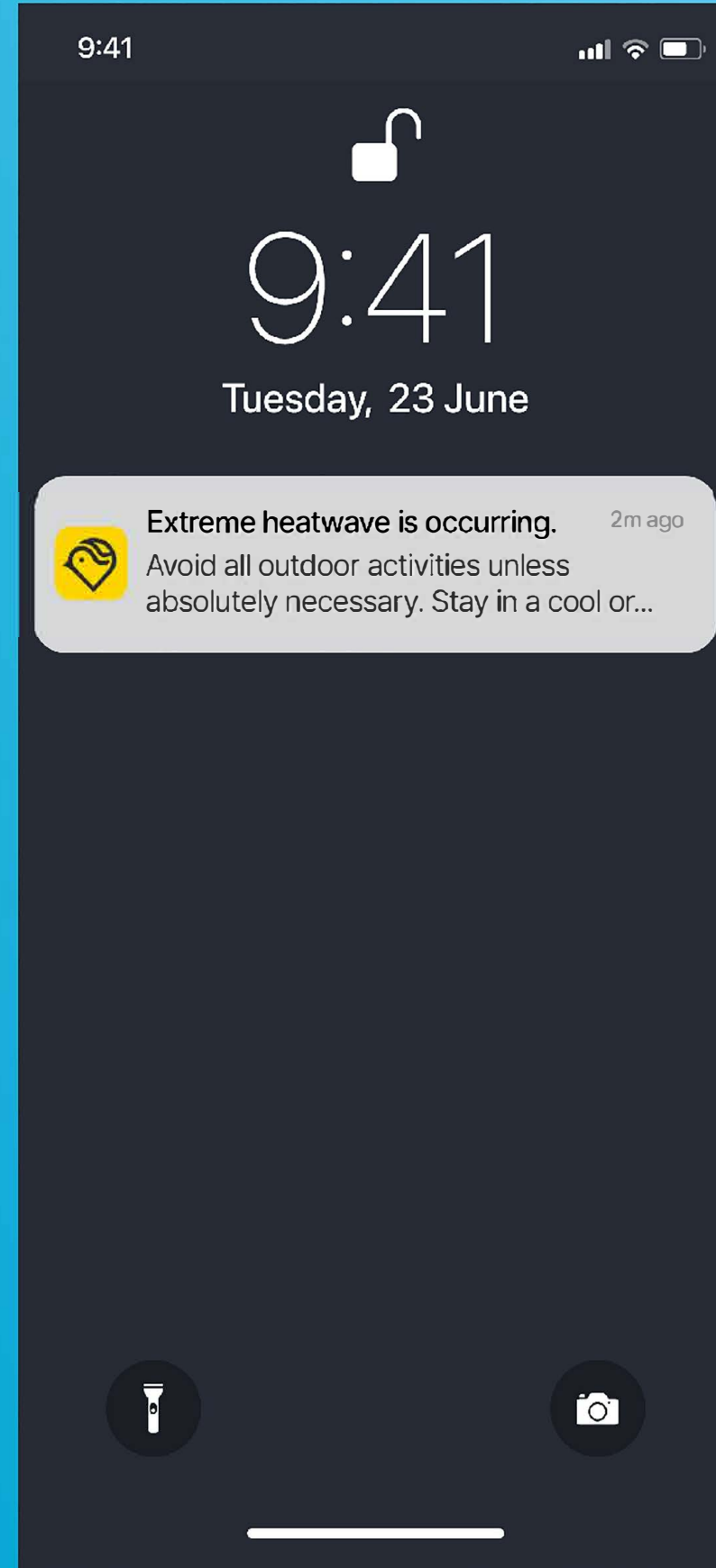
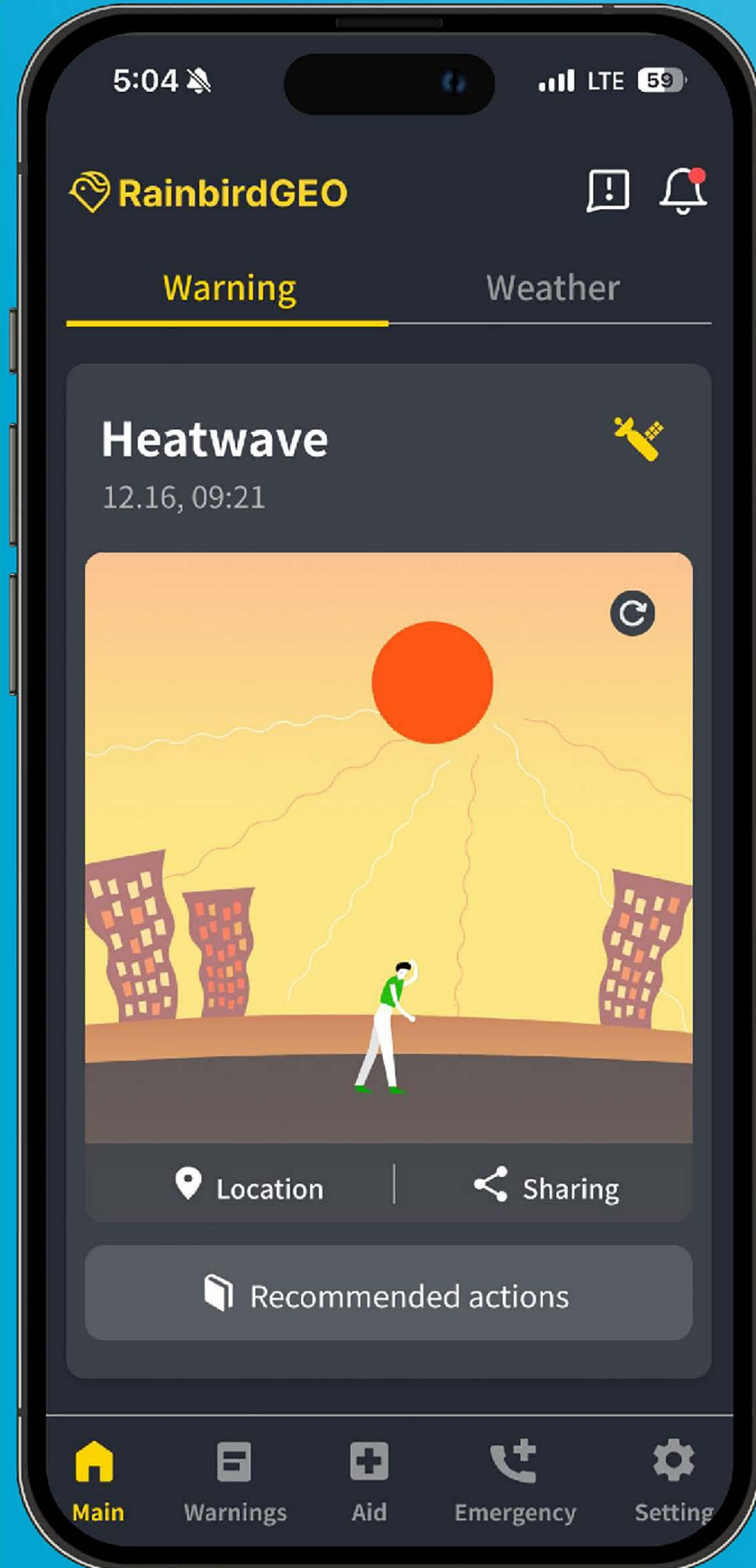
- **Countries:** Bangladesh, Cambodia, Sri Lanka, Pakistan, Tajikistan (2023 – 2026)*
- **Funding:** About \$4M* (TA)
- **Government Partners:** Various government stakeholders including Gender Equality, Climate Change, Meteorology, Disaster Risk Managements, key sectors such as agriculture, urban, tourism, health, energy, etc.
- **Focus Areas:**
 - Increase knowledge on extreme heat and its gendered impacts
 - Support gender-responsive heat action planning and policy integration
 - Demonstrate women-focused actions and solutions, including early warning systems (EWS)
- **Why CIEWS might have a potential entry point?**
 - **Intensifying extreme heat** requires more accurate and responsive early warning systems.
 - Existing systems often **lack gender considerations and localized data**, leaving women more vulnerable.
 - Gender-responsive CIEWS provides governments and communities with a practical tool to operationalize gender-responsive climate action and improve women's health, safety, and livelihoods.
- **What is/are the potential entry points for CIEWS in the project?**
 - **Scale up** the existing gender-responsive heatwave early warning system demo in Cambodia.
 - **Integrate gender considerations** into both existing and new CIEWS, ensuring women's participation and tailoring features (e.g., personalized reminders & alerts, feedback mechanism).
 - Leverage data & digital technologies to improve reach and usability, with linkages to actions in key sectors and parametric insurance.
- **How the EWS TA possibly be collaborating with the project for CIEWS concept design?**
 - Scale demos like Cambodia's gender-responsive EWS, embed gender, and use digital tech to link with key sectors and actions (e.g., agriculture, tourism, education, parametric insurance).

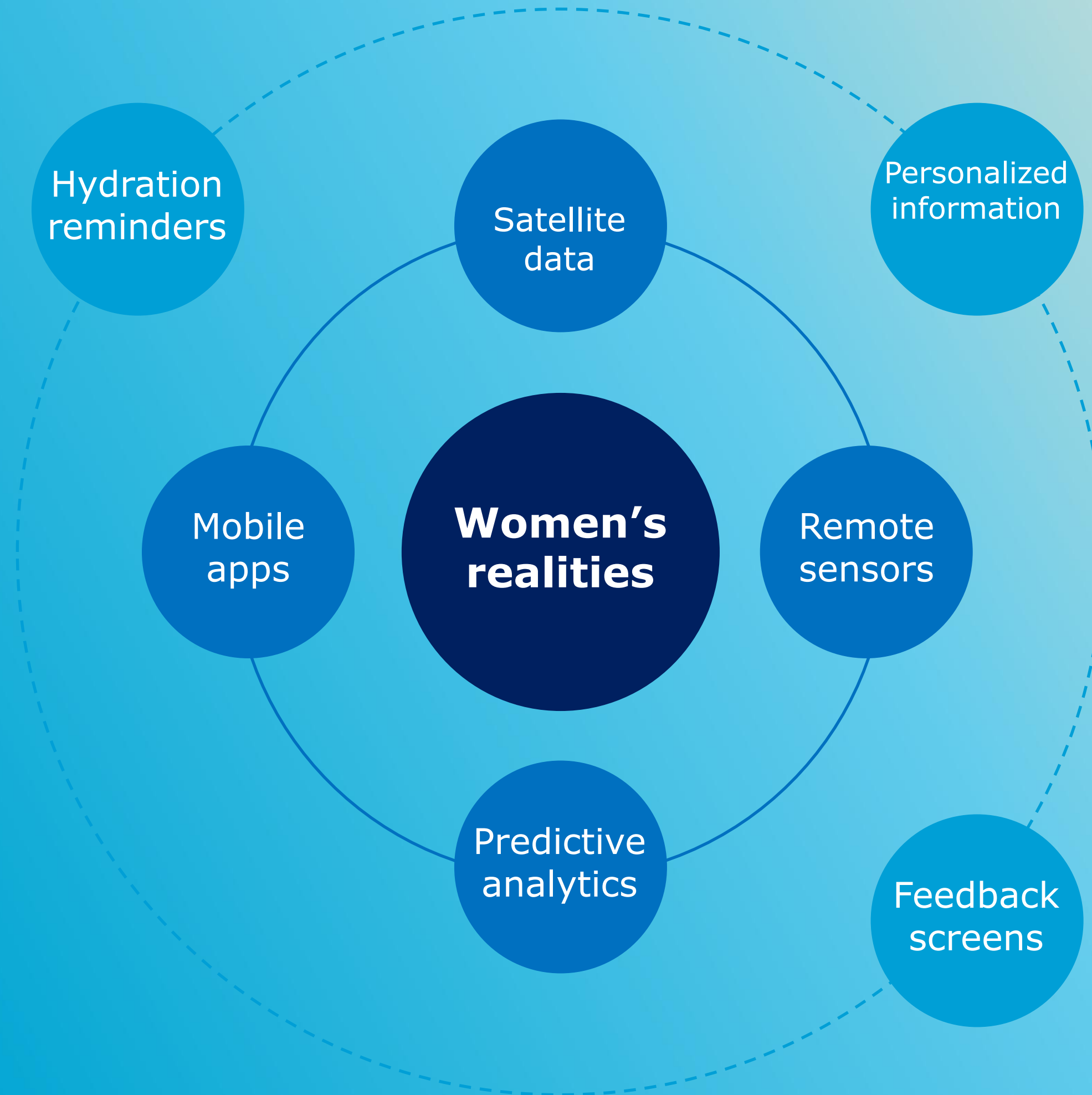
*) Note: The TA is in the process to add the Philippines, extend the timeline until 2027, and increase the funding to about \$14 million.

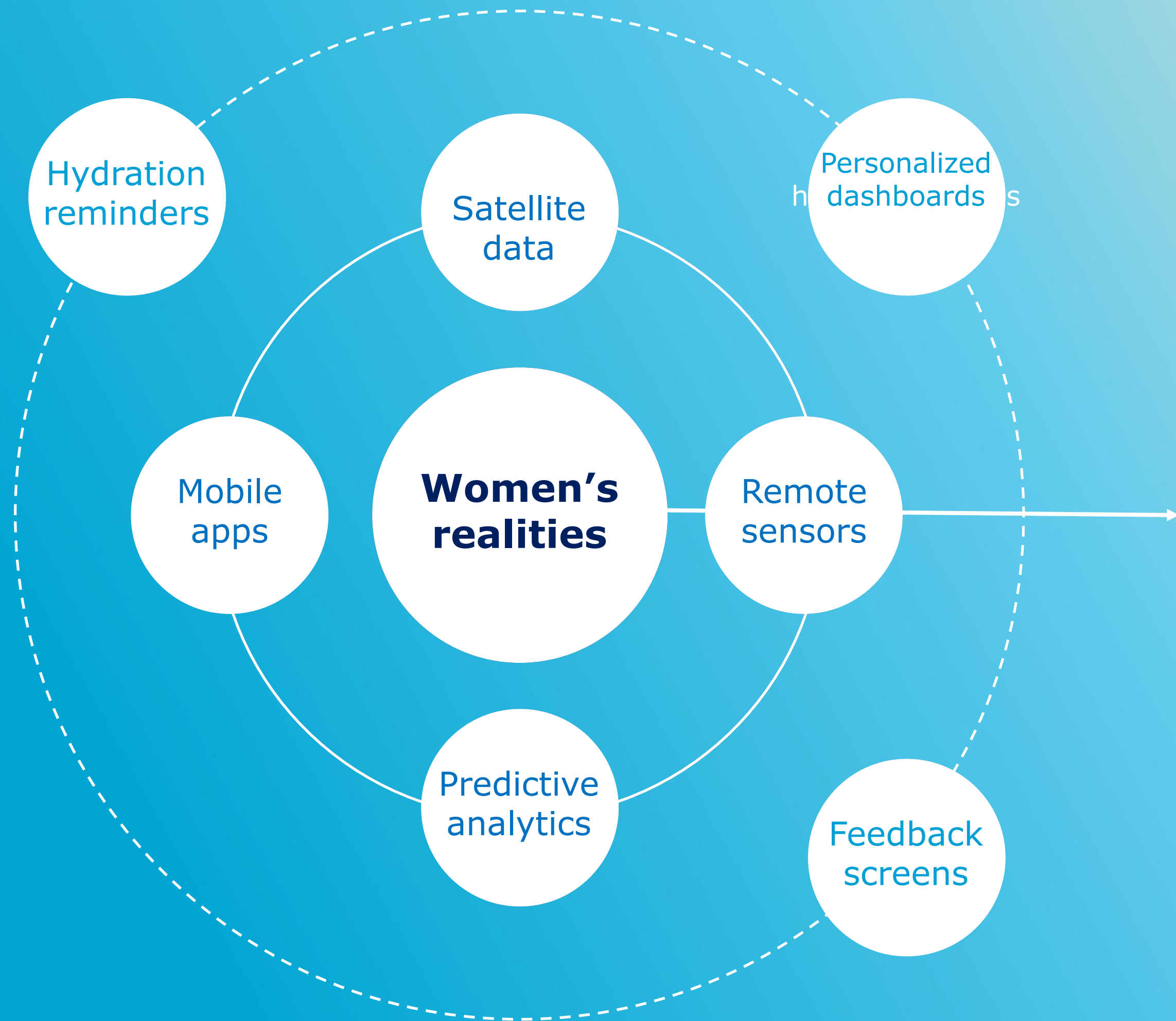
Enhancing Resilience to Extreme Heat

Through Early Warning and Gender-Responsive Action









OUR GOAL

Help governments craft data-driven, gender-responsive climate policies, co-designing systems with women themselves



***Scan the QR code or
learn more on
www.adb.org/genderandheat***

