

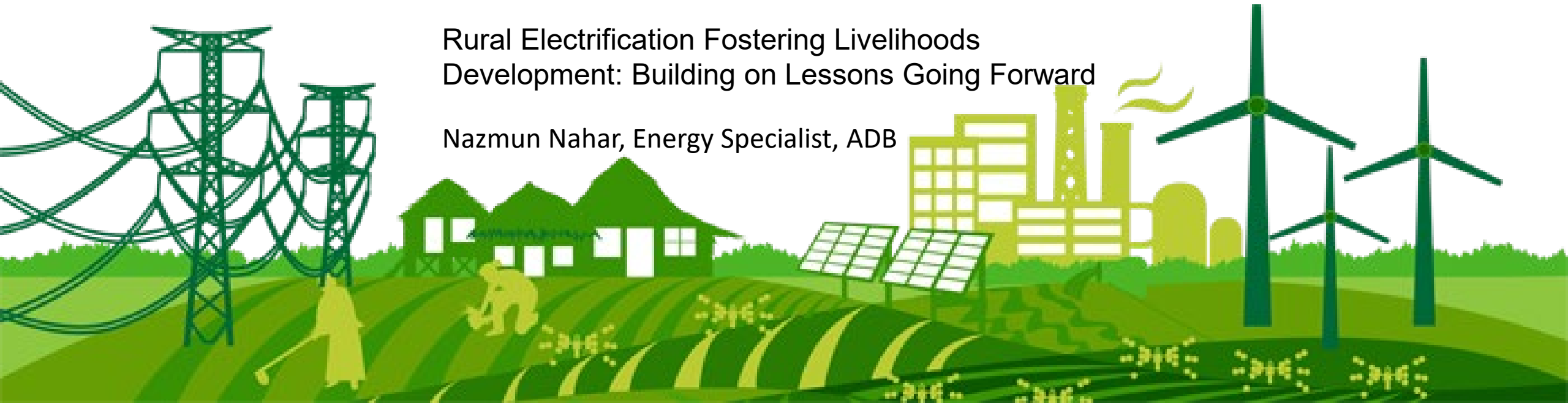
## SOUTH ASIA SUBREGIONAL WORKSHOP

# INCLUSIVE CLEAN ENERGY TRANSITIONS IN BANGLADESH, MALDIVES AND SRI LANKA

26-27 May 2025 • Dhaka, Bangladesh

Rural Electrification Fostering Livelihoods  
Development: Building on Lessons Going Forward

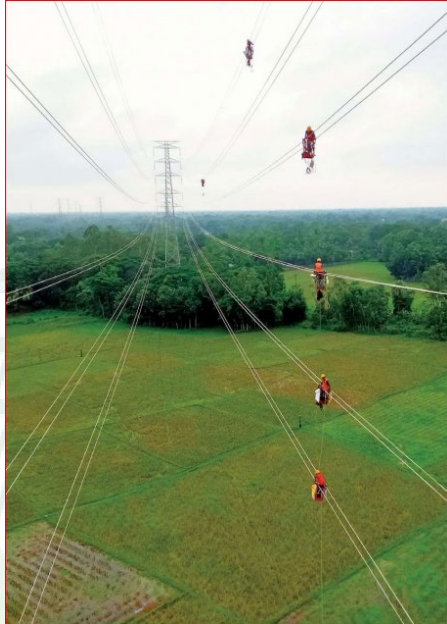
Nazmun Nahar, Energy Specialist, ADB



# Bangladesh Power System Enhancement and Efficiency Improvement Project

## ADB Loan 3522/23, Grant 9190-BAN: Bangladesh Power System Enhancement and Efficiency Improvement Project

Loan Milestones		Amounts (\$ mil)
Approval	29 Mar 2017	Loan Amount– 600 COL– 16 Grant Amount– 2
Signing	29 May 2017	
Effective	22 Jun 2017	
Original Closing Final Closing	31 Dec 2020 31 Jan 2025	



EA/IA	\$ million	Outputs
PGCB	73.5	1. Power Transmission
DESCO	10.2	2. Distribution automation
<i>BREB</i>	<i>470.6</i>	<i>3a. Rural power distribution</i>
<i>BREB</i>	<i>2</i>	<i>3b. Energy-based Livelihood enhancements</i>
Power Division	16	4. Capacity building



# Rural Electrification Fostering Livelihoods Development: A Tale of Translating Electricity Supply into Improvement of Rural Households

Infrastructure  
for energy  
access \$470.6  
mil (OCR)

Capacity  
Development  
\$16 mil (COL)

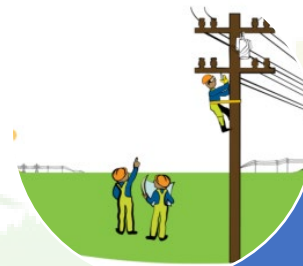
Support for  
Energy-based  
livelihood  
development \$  
2 mil (Grant)

## Outcome

950,000 new connections, including 875,000 rural households, connected to electricity network and benefiting at least 875,000 women



Energy-based livelihoods supported with at least 30% women and 50 small businesses, including 50% led by women entrepreneurs



12,000 kms of new electricity distribution lines; and augmented and rehabilitated 38,000 kms of distribution lines



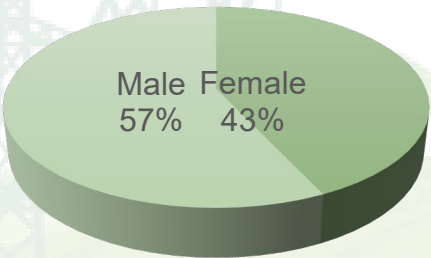


# Phase 1: Training and Capacity Building

**Project Area:** 5 low-income Palli Bidyut Samity- Kishoreganj, Sunamganj, Gopalganj, Thakurgoan & Bhola.

**Beneficiary:** 2100 lifeline consumers [who used not more then 10-50 KW-Hr (units) of electricity per month]

Category A: Lifeline Consumers	
1. Rural entrepreneurship skill development	500 Consumers
2. Technical skill development	100 Consumers
3. Safe, efficient & productive use of electricity	500 Consumers
Sum Total Category A	2100 consumers
Category B: BREB PBS Employees	
1. GIS based power distribution operation and maintenance training	600 PBS employee
Grand Total	2700 lifeline consumers and PBS Employees



Energy Based Livelihood Training Topic		Recipient Consumers	Duration (Days)
1	AC & Refrigerator repairing (102 consumers)	102	28
2	Mobile Servicing (185 consumers)	185	28
3	Integrated Agriculture (170 consumers)	170	22
4	Fisheries (55 consumers)	55	22
5	Basic Computer (90 consumers)	90	22
6	Electricity House Wiring (70 consumers)	70	22
7	Tailoring (408 consumers)	408	22
8	Beautification (20 consumers)	20	22
9	Rural entrepreneurship skill development (500 consumers)	500	10
10	Safe, efficient & productive use of electricity (500 consumers)	500	05
Total		2100	203



**NOSSAL INSTITUTE**

GLOBAL HEALTH  
RESEARCH AND  
PRACTICE

**IEEE SA**

STANDARDS  
ASSOCIATION

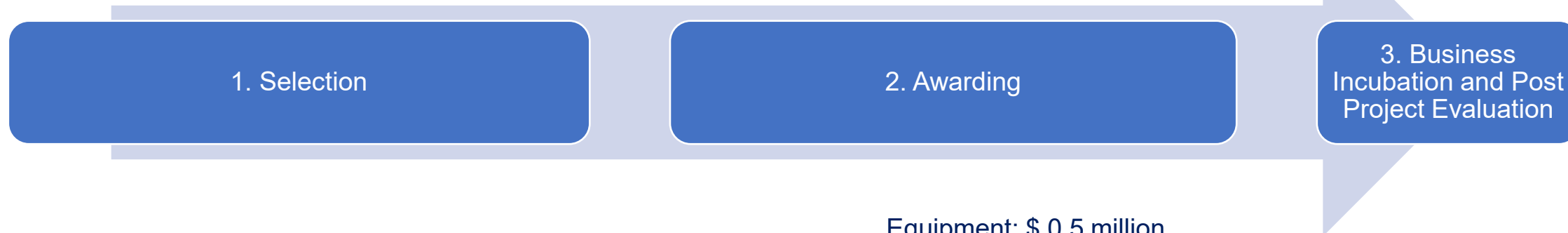




# Phase 2: Business and Trade incubation

## 1. Selection of 385 Life-line Consumers based on merits

## 2. Awarding of Equipment



Stage	Evaluators	Areas of assessment	Evaluation Indicators	Marks
1	Consulting Firm	Socio-economic background	14	35
2	BREB & PBS	Skill development from training & others	11	40
3	Trainers	Training acquired knowledge	10	25
Total			35	100

Equipment: \$ 0.5 million

- ❖ Agri Products: 54
- ❖ Egg Incubator & Poultry Feed Making Machine: 15
- ❖ Fish Feed Making Machine: 13
- ❖ Walk in Cold Room (4 ft x 4 ft): 4
- ❖ Oil Press Machine: 12
- ❖ Spice Grinding Machine: 20
- ❖ Charcoal briquette making machine: 6
- ❖ Electric Oven & Food Mixture Machine: 14
- ❖ Tailoring Products
- ❖ ICT products: 44 Sets/ 30 items
- ❖ Mobile Servicing tools: 46 Sets/18 items
- ❖ Beauty Parlor Equipment: 16 Sets

## Phase 3: Post Project Evaluation

- CVs and Bio-data of the certified trainees are uploaded in the Job Portal
- Selected certified trainees are linked the trainees with NGOs and organizations for financial & technical support
- From the post-project evaluation results, it has been observed that about 67% of the total trainee and beneficiaries of the project are generating money on their own by joining various technical professions and business organizations; with 527 women (33%).



### Going Forwards:

Based on the success stories of the TEHRISH project, ADB's ensuing Sustainable Energy Development and empowering communities in Chattogram Hill Tracts Project for BPDB (\$200 million) has proposed to replicate an energy-based livelihood project. JFPR has in principal agreed to finance \$2 million in January 2025, to support the project.

# Thank You

