

Digital: earth Observation for Forest management. Focus on the ESA-ADB partnership and opportunities

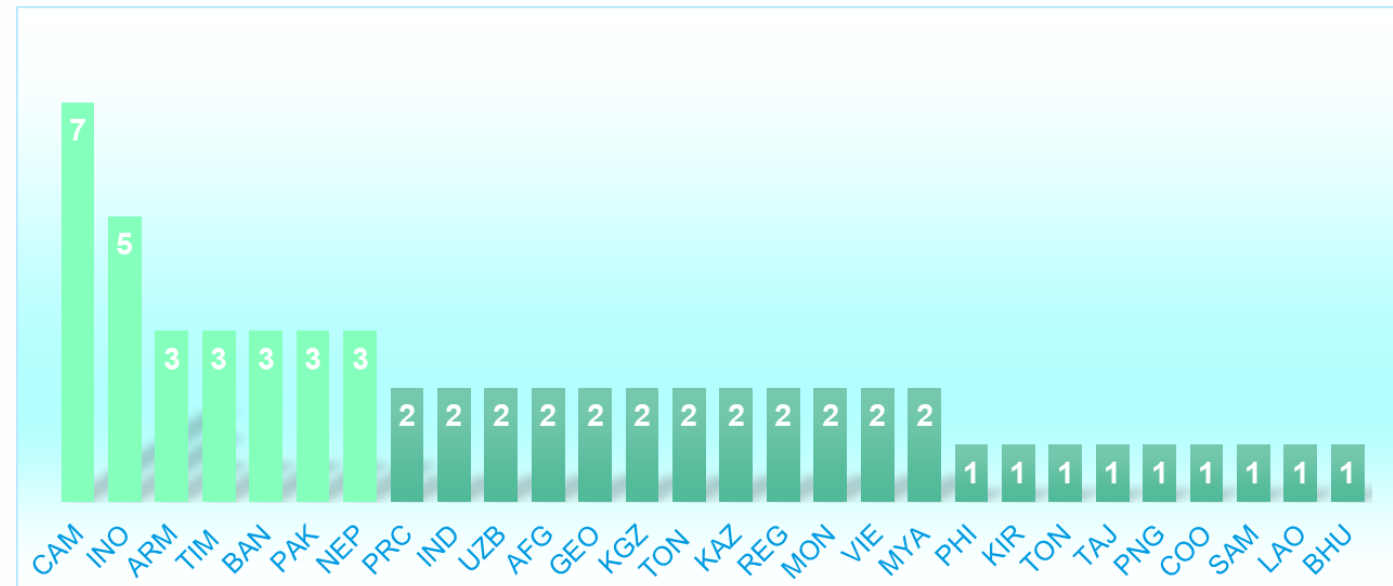
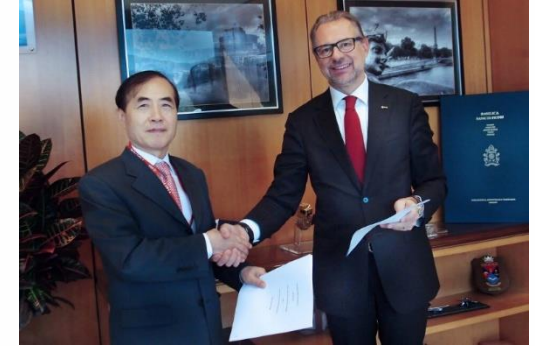
ENVIRONMENT AND NATURE LEARNING WEEK 2025
8 October, Forest Session

Yves Barthelemy
Digital Technology Specialist (Earth Observation)
Digital Sector Office, Sectors Department 2
ybarthelemy@adb.org

The views expressed in this material are the views of the author/s and do not necessarily reflect the views or policies of the Asian Development Bank, or its Board of Governors, or the governments they represent. ADB does not guarantee the accuracy of the data included in this presentation and accepts independent status or necessarily conform to ADB's terminology.

ADB – ESA partnership

- Collaborations initiated in 2010
- Seconded since 2017
- More than 50 projects supported in 30 countries.
- Multi/sectorial support



ESA is committed to the peaceful
exploration
and use of space for the benefit of
people, society and our planet.

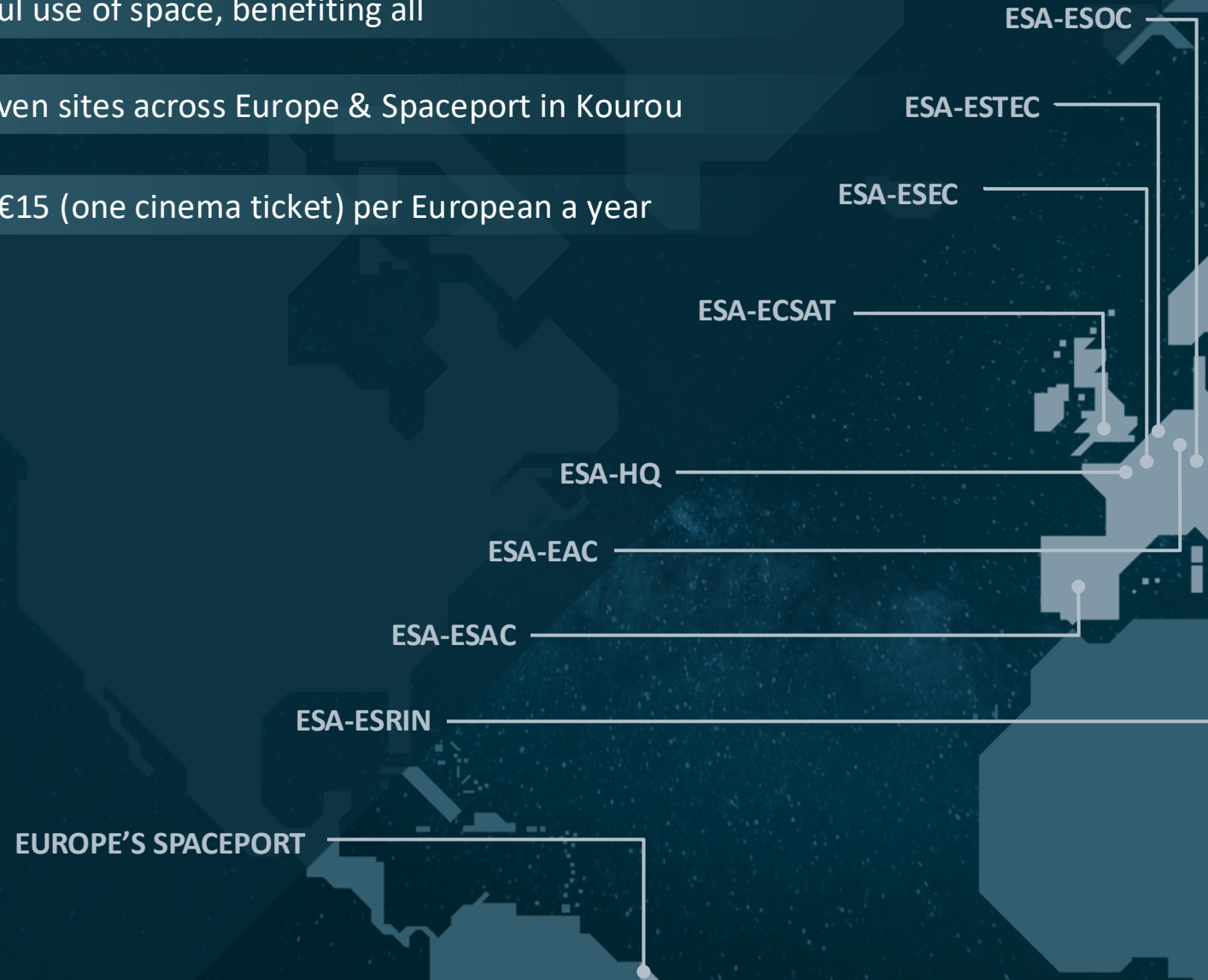


WHO 23 Member States, 2500+ staff members and total workforce of 6000+

WHY For the peaceful use of space, benefiting all

WHERE HQ in Paris, seven sites across Europe & Spaceport in Kourou

BUDGET €7.79 billion = €15 (one cinema ticket) per European a year



Copernicus Sentinels: Operational monitoring



PROGRAMME OF THE
EUROPEAN UNION



300 TB
satellite data distributed
per day



full, free &
open
data policy

sentinel-1

→ RADAR VISION

sentinel-2

→ COLOUR VISION

sentinel-3

→ A BIGGER PICTURE

sentinel-4

→ EUROPEAN AIR MONITORING

sentinel-5p | sentinel-5

→ GLOBAL AIR MONITORING

sentinel-6

→ SURFING THE SEAS



All global
landmass
is observed
every **5** days
at **10_m**
resolution

0 days 00 hours 00 minutes
Sentinel-2 constellation:
summer solstice

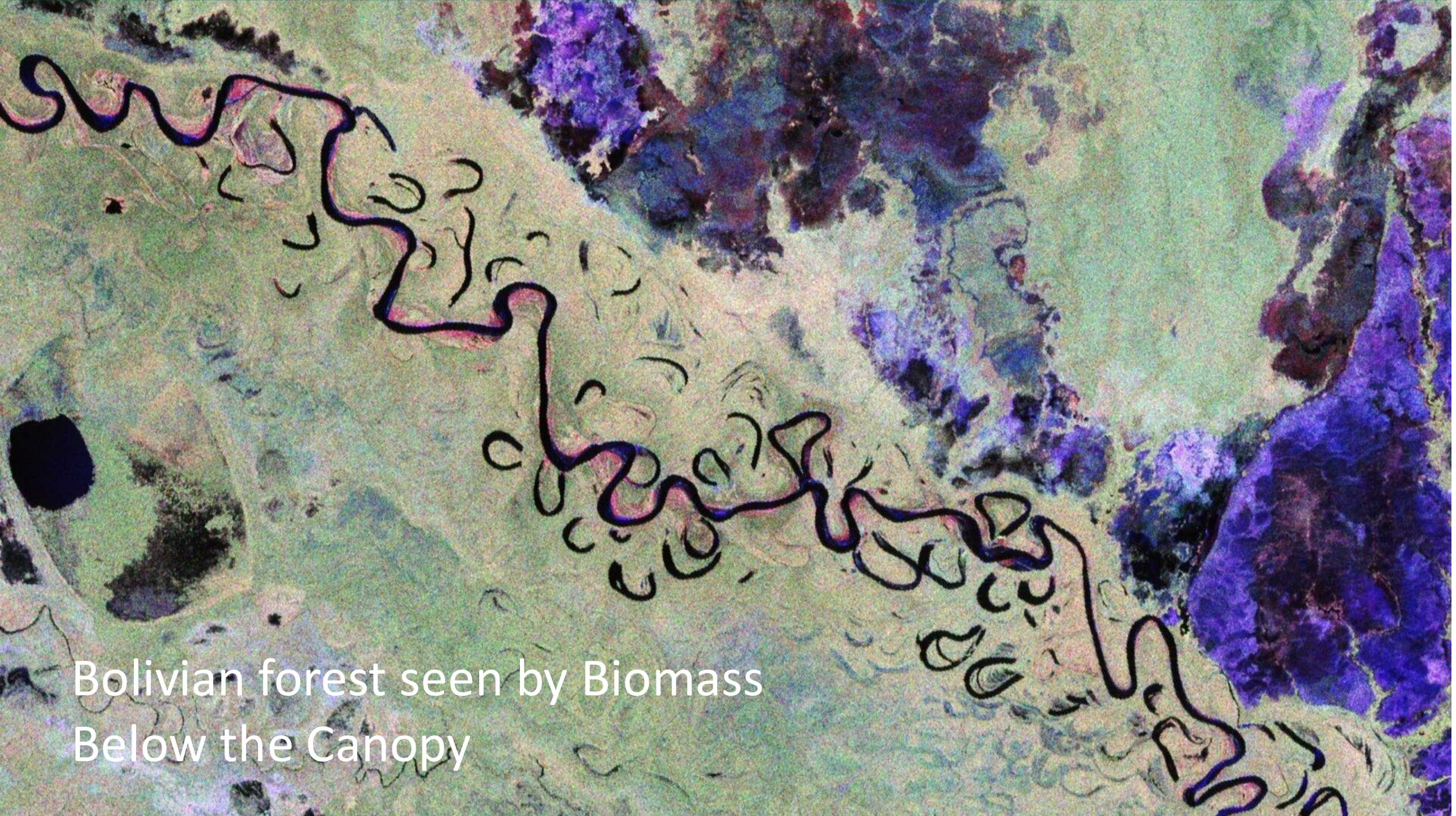
Deforestation monitoring





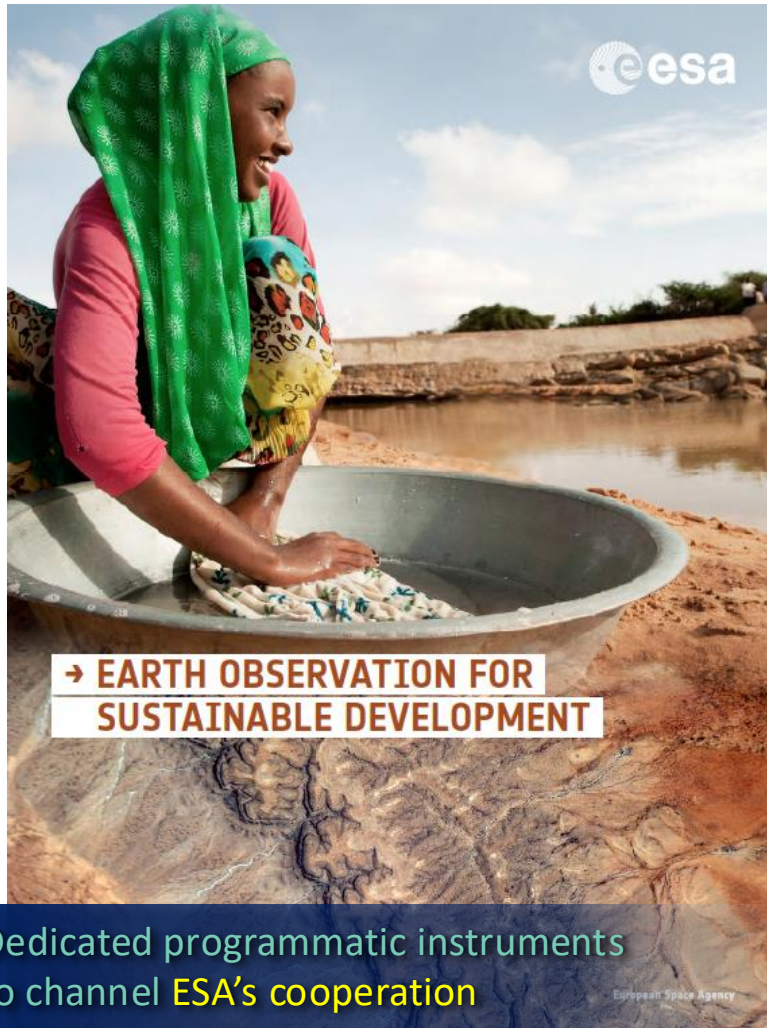


Bolivian forest seen by Sentinel 2
Top of Canopy



Bolivian forest seen by Biomass
Below the Canopy

ESA EO programmes in support of Int.



Dedicated programmatic instruments to channel **ESA's cooperation** with **International Financial Institutions**

- **eoworld:** 2008-2015
Small-scale **demonstrations** of EO services in support of IFI projects to **raise awareness**
- **EO4SD:** 2016-2024
Consolidation of requirements and strategic engagement of development stakeholders to **build capacity** on EO services
- **GDA:** 2020-2027
Mainstreaming of EO into development operations and financing, and **skills transfer** to IFI and client state stakeholders
- **GDA^x** within **Earth Action:** 2026 onwards



Water Resources

KO Feb'23

Clean Energy

KO Dec'22

Transport & Infrastructure

KO Jan'24

Agriculture

KO Sep'22

Forest Management

KO Sep'24

Marine Env. & Blue Economy

KO Jun'22

Public Health

KO Sep'24

Urban Sustainability

KO Feb'22

Fragility, Conflict & Security

KO Jan'22

Climate Resilience

KO Dec'21

Disaster Resilience

KO Sep'21

Country involved	IFI Project / Programme	EO Product name	GDA AID Activity	IFI Proj.
1. Nigeria	1. West Africa Coastal Areas Management (WACA) Program...	1. Water pollution monitoring (e.g., sewage sources)	1. Water Resources	1
2. Bangladesh	2. West Africa Coastal Areas Management (WACA) (No proj...	2. Water Quality Assessment and Monitoring	2. Urban Sustainability	9
3.			3. Marine Environment an...	11
4.			4. Fragility, Conflict and S...	8
5.			5. Disaster Resilience	9
6.			6. Climate Resilience	10
7.			7. ...	7
8.			8. ...	7
9.			9. ...	1-8 / 8
10.				
11.				
12.				
13.				
14.				
15.				
16.				
17.				
18.				
19. Georgia	19. P172227 - Agro Climatic Resilience to Semi-Arid Landscap...	19. Small scale infrastructure monitoring		

❖ 75 countries
❖ 109 IFI projects
❖ 172 EO products



Climate Adaptation
& Finance

KO Apr'25

GDA AID

Agile EO Information Development



in partnership with



ESA Global Development Assistance

Accelerating Impact

EO for Forest Management – Use Cases

For ADB, GDA Forest



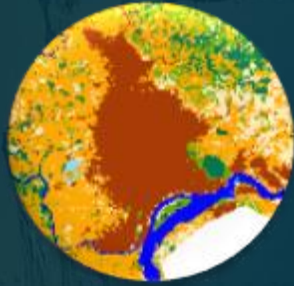
Implemented by: GAF AG | IGN-FI | ONF-I | unique | GISBOX | Caribou Space

GDA Forest Monitoring
Started September 2024

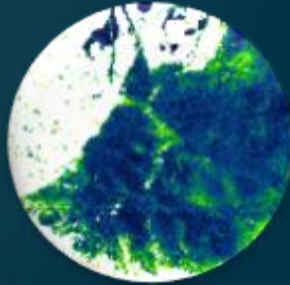


→ THE EUROPEAN SPACE AGENCY

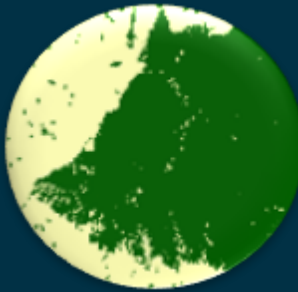
Portfolio of Verified Products



Land Use /Land
Cover and
Change



Tree Cover
Density and
Tree Cover
Change



Forest Area
and Change



Near Real Time
Canopy
Disturbance



Mangrove Area,
Change and
Recovery



Global Biomass,
Global Landcover,
WorldCover,
WRI...



To support Forest Management

REDD+ for Tropical
Forest Ecosystem

Protected
Areas

Zero Deforestation
EUDR

Forest
Inventories

Coastal Ecosystems
and Mangroves

Forest Landscape
Restoration

Sustainable Forest
Management

KGZ – Conservation and Afforestation

- Supporting Forest project preparation
 - Maps
 - Data
 - Analytics



in partnership with

GDA **WORLD BANK GROUP** **ADB** **ASIAN DEVELOPMENT BANK**

Global Development Assistance
Accelerating Impact
Forest Management

Showcases of potential approaches and tools
Support ADB's preparation of the project
"Conservation and Afforestation for Resilient Ecosystems (CARE)" in Kyrgyzstan

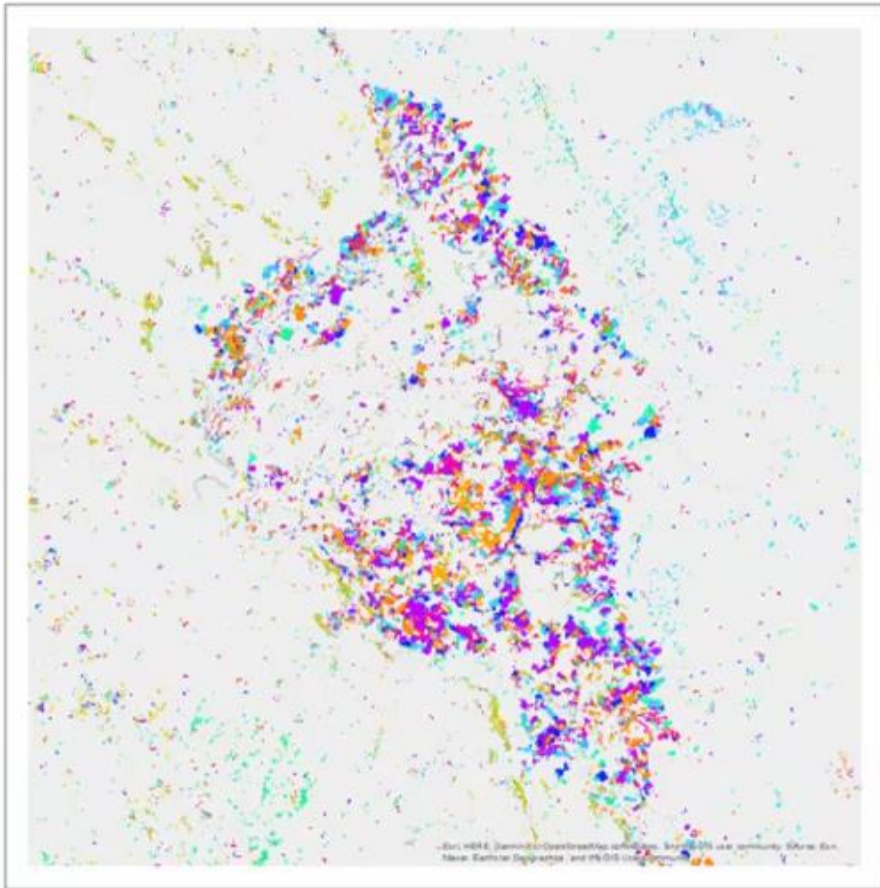
powered by **esa**

June 2025
Contact: patricia.holter@unique-landuse.de

LAOS - Tree Cover Disturbance (WB project)



LAOS - Tree Cover Disturbance (WB project)



**TCDM (values 1-163,
reduced for map extend)**

1	1. half of January 2018
45	1. half of November 2019
67	1. half of November 2020
68	2. half of November 2020
71	1. half of December 2020
106	2. half of Mai 2022
163	1. half of October 2022



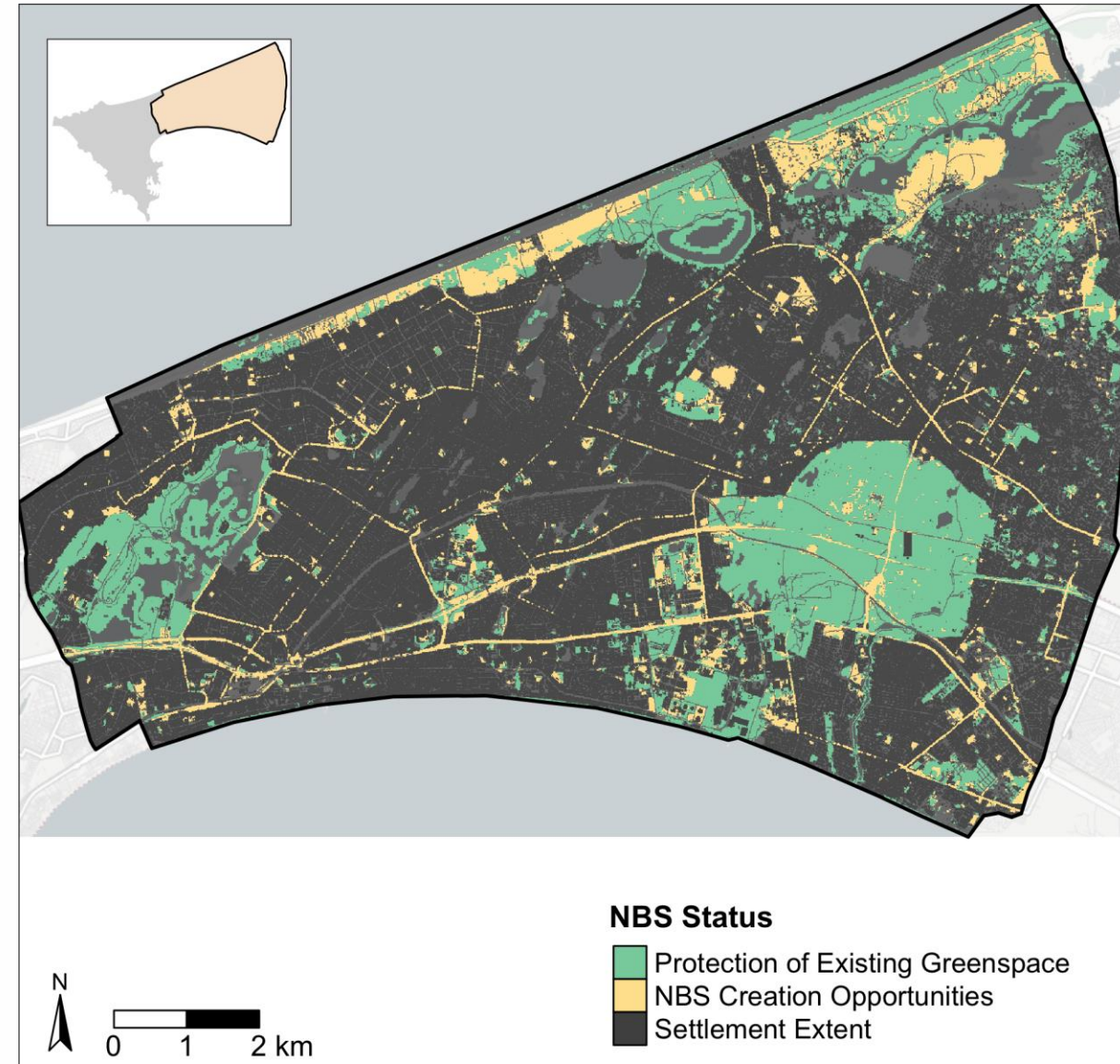
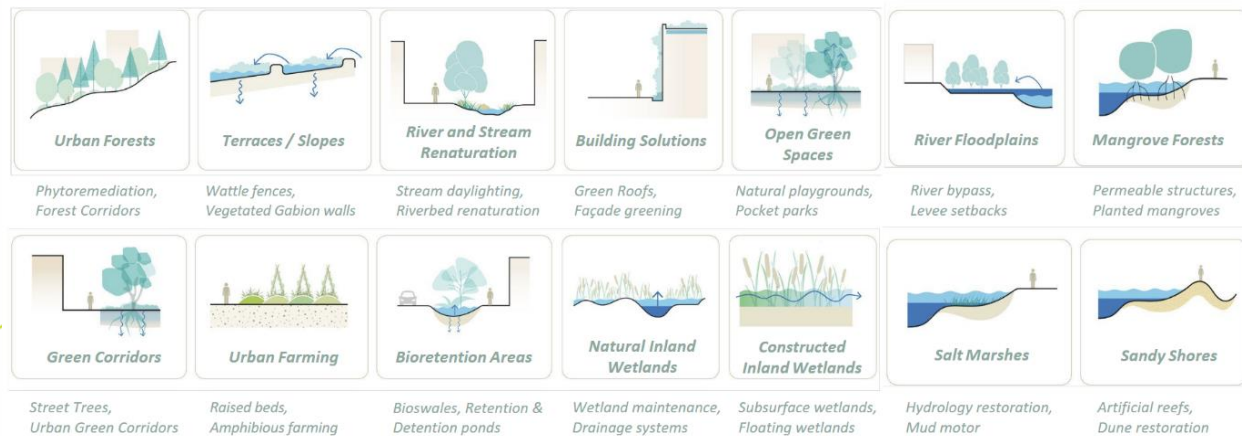
0 400 800 1 200 1 600 2 000 km

Other initiatives



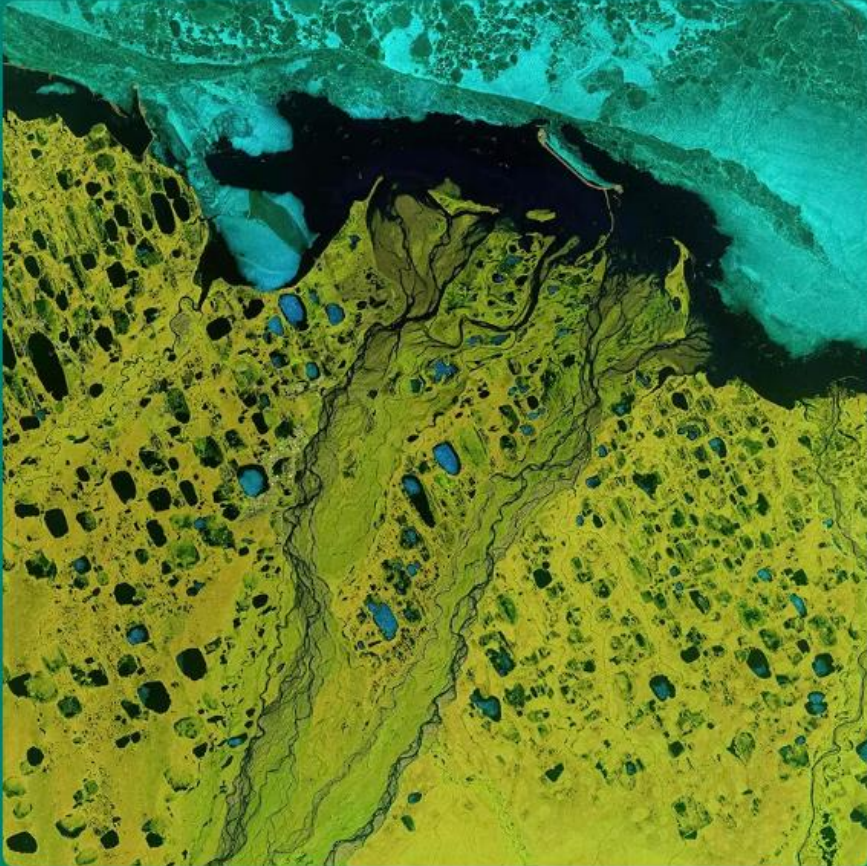
NBSOS - Nature-Based Solutions Opportunity Scan

- ESA, in partnership with WB will pilot the NBS Scan with ADB.
- 3 Cities selected already.



LEON

Leveraging Earth Observation for Nature Finance



MISSION

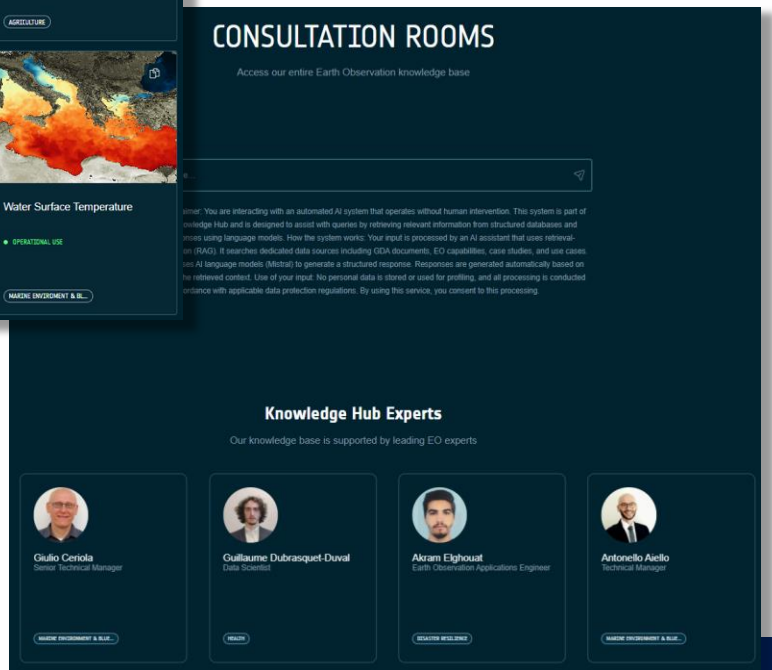
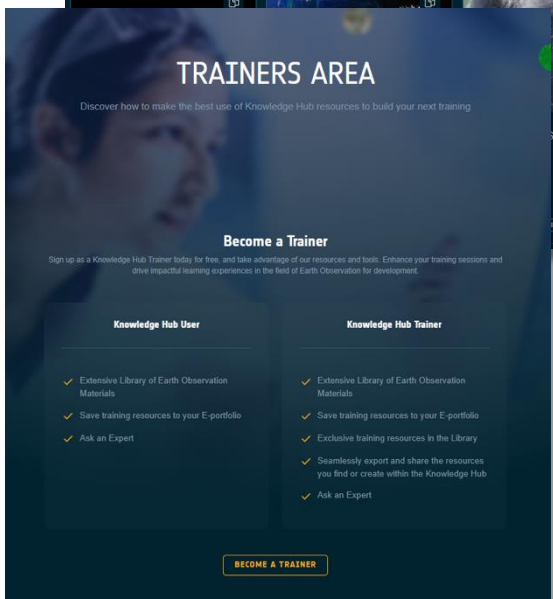
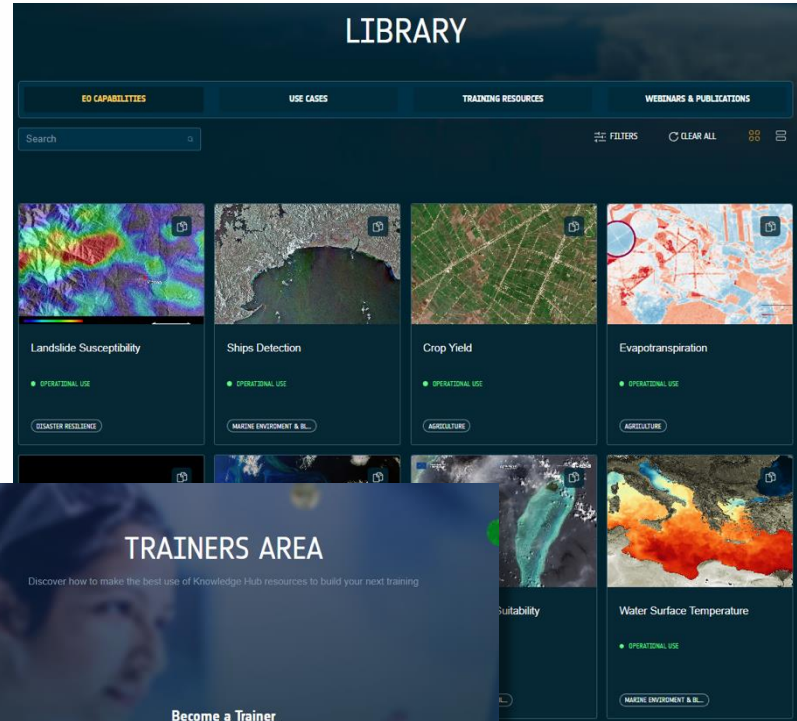
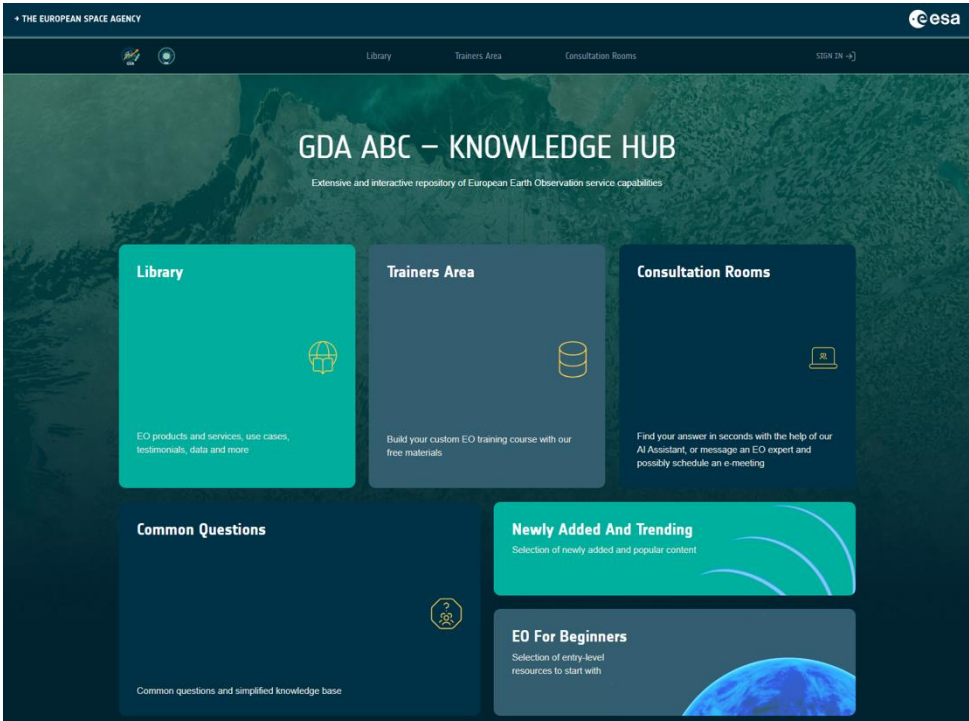
Explore how Earth Observation can support the upscaling of nature-positive activities.

Project LEON aims to enhance and facilitate finance for the benefit of nature by bridging data gaps and improving decision-making.

CopPhil – the first Copernicus Mirror

- CopPhil is managed by the **European Union Delegation** to the Philippines.
- It is implemented by the **European Space Agency (ESA)** in partnership with the
- **Philippines Space Agency (PhilSA)** and the Philippine Department of Science and Technology (DOST).





Learn about EO Capabilities through our **Knowledge Hub**

How to engage with DIG and ESA and benefit from the partnership.

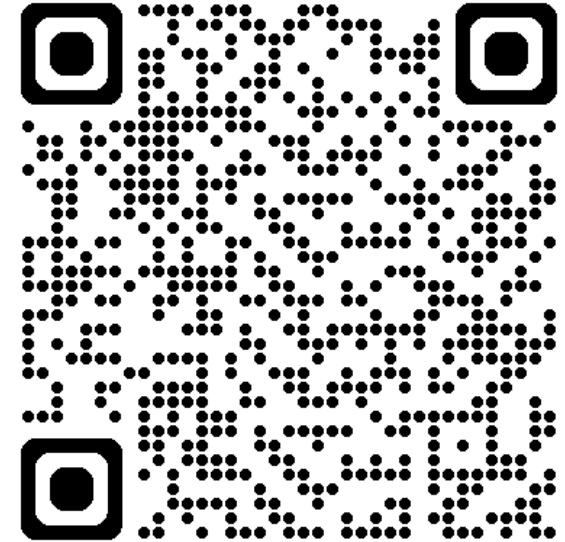
Current opportunities in :

[Forest Management](#)

[Climate Finance and Adaptation](#)

[Health](#)

[Transport](#)



Get in touch: ybarthelemy@adb.org

