

The views expressed in this presentation are the views of the author/s and do not necessarily reflect the views or policies of the Asian Development Bank, or its Board of Governors, or the governments they represent. ADB does not guarantee the accuracy of the data included in this presentation and accepts no responsibility for any consequence of their use. The countries listed in this presentation do not imply any view on ADB's part as to sovereignty or independent status or necessarily conform to ADB's terminology.

Technology Innovation Challenge

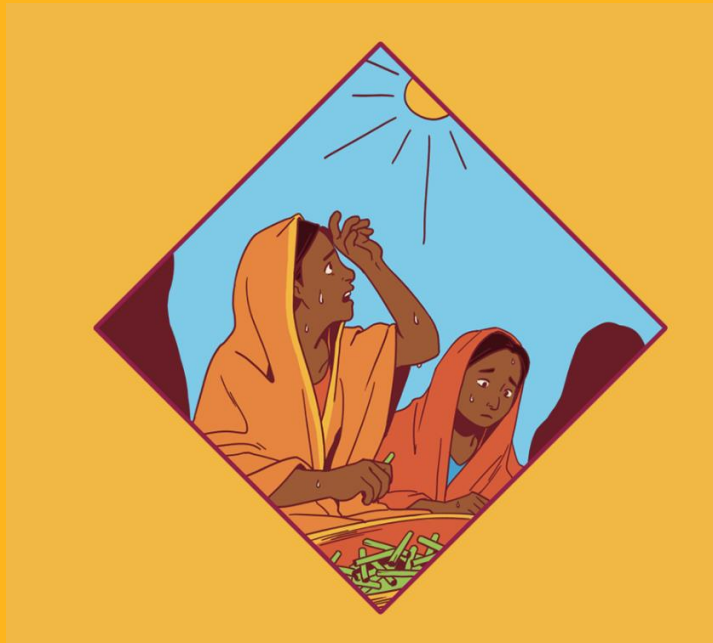
Rising Above the Heat

Innovative Cooling Solutions for Rural Women in Asia



Extreme heat is rising across Asia and the Pacific, reducing yields and increasing food losses. By 2045, majority of the world's food producers will face extreme heat risks, with staple crops under threat.




Women farmers are disproportionately affected. They are often more exposed to extreme heat, have fewer resources to adapt, and lack access to affordable cooling. As a result, their health, productivity, and livelihoods are especially at risk.





Rising Above the Heat

Innovative Cooling Solutions for Rural Women in Asia

-  **Objective:** Launched in 2024 to discover and test practical cooling solutions that strengthen the resilience of rural women farmers in Bangladesh and Cambodia.
-  **Challenge:** Pitch an innovative cooling solution that is accessible and locally adapted, climate-resilient, practical, scalable, and sustainable.
-  **Incentives:** Up to \$500,000 in grant funding (with 10% co-financing), mentorship from ADB specialists, market access and visibility, and impact testing in real-world settings.



Selection Process

Proposals were assessed based on the following criteria; each graded on a scale of 1 to 10 (10 = Excellent; 1 = Poor)

Development Impact (30%)

The solution demonstrates clear benefits for resilience and inclusive development.

Project Team (20%)

The team has the skills and capacity to successfully deliver results.

Partnerships & Women's Engagement (20%)

The proposal shows strong local ownership and meaningful engagement of women.

Feasibility & Scalability (20%)

The solution is realistic to implement and has potential to grow.

Innovativeness (10%)

The approach introduces new or improved ways of addressing the challenge.

Key Numbers



86 entries received, including 36 completed EOIs



7 proposals longlisted



4 proposals pitched



1 winning solution selected for its potential to deliver real impact for women farmers and scale across communities.

Emerging Insights

- ❁ Practical, scalable solutions exist to address women's vulnerability to heat stress.
- ❁ Innovations work best when women's needs and lived experiences inform how solutions are shaped.
- ❁ Localized solutions, co-developed with women and women's organizations and local partners, are essential to ensure relevance and uptake.





When women farmers are equipped to adapt, their resilience multiplies across households and communities.

What benefits women directly benefits families, food systems, and economies; what strengthens women strengthens us all.