



# UNLEASHING ECOSYSTEM SERVICES IMPACTS BY FOREST STEWARDSHIP

**Michelle Wong** – Deputy Regional Director, Asia Pacific

**Thesis Budiarto** – Program Manager, Technical and Strategic Engagement, Asia Pacific  
Forest Stewardship Council

This is not an ADB material. The views expressed in this document are the views of the author/s and/or their respective organizations and do not necessarily reflect the views or policies of the Asian Development Bank, or its Board of Governors, or the governments they represent. ADB does not guarantee the accuracy and/or completeness of the material's contents, and accepts no responsibility for any direct or indirect consequence of their use or reliance, whether wholly or partially. Please feel free to contact the authors directly should you have queries.





# FSC supports the Sustainable Development Goals



FSC's solutions can **help companies and governments work toward achieving** many of the UN's Sustainable Development Goals (SDGs).

FSC's responsible forestry standard is particularly relevant to **realizing SDG 15, which is Life on Land.**

- ☐ FSC's work supports **14 of the 17** SDGs.
- ☐ FSC's sustainable forest management principles are an **official indicator** for SDG15 (Life on Land, 15.2).

# From forest to consumer— and beyond the value chain

## CORE CERTIFICATION



## VOLUNTARY ADD-ONS

Forest managers and businesses who want to  
measure and showcase impact

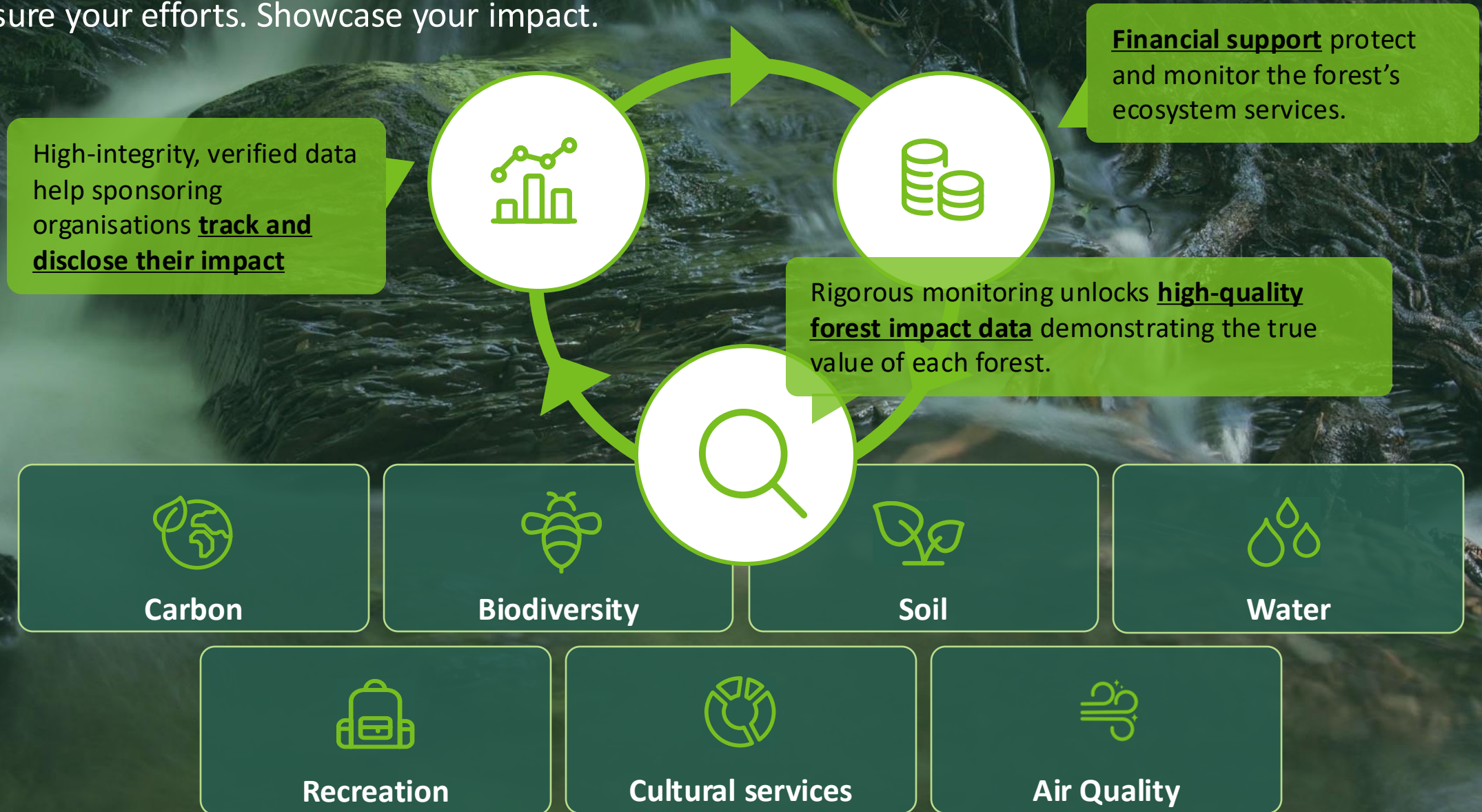
 **Verified Impact**

EUDR-affected companies  
throughout the chain

 **FSC Aligned for EUDR**

# Verified Impact

Measure your efforts. Showcase your impact.





# Government Engagement in Taipei, China



2024 Dec 11 – FANCA Full State-Owned Forest Certified Press Conference

- 2018 initiated the adoption of FSC standards on Forest and Nature Conservation Agency (FANCA) jurisdictions.
- In 2024 finished FM certification for all 8 jurisdictions.
- Certified area (1.6 million ha) is roughly 72% of all forest cover in Taipei, China.
- Next step to verify the impacts of ecosystem services generated.



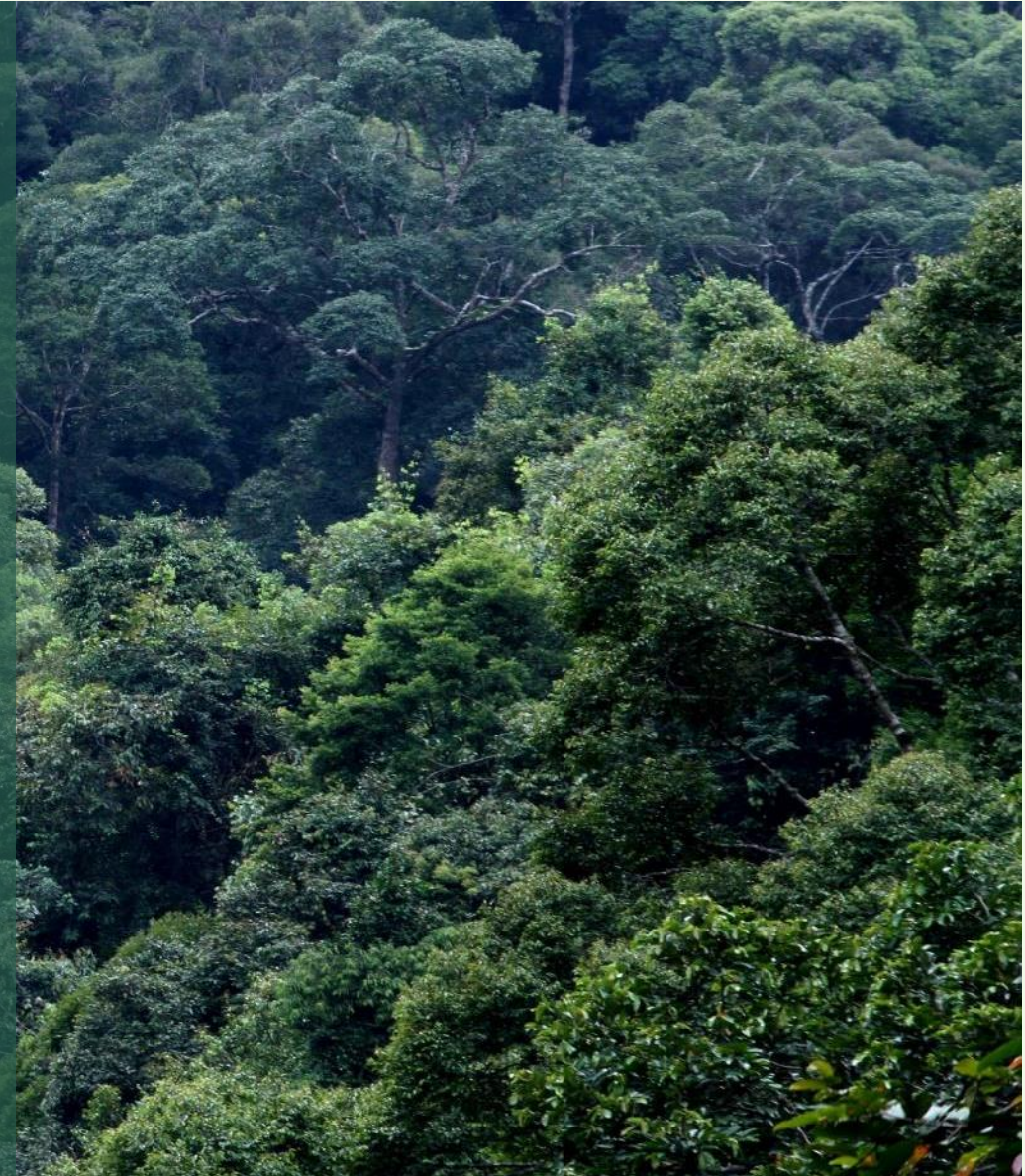




# Case study – Katingan Sebangau Landscape Project



- Ecological and biodiversity conditions in important habitat of Orangutan species is connected
- Best Management Practices of rattan as NTFP commodity has been implemented by local community farmers with the aim for FSC certification audit
- Social enterprise model for community forestry NTFP have been developed and implemented
- Threats from deforestation and forest fires faced by the flagship species habitat are mitigated and reduced through implementing the Early Warning and Response System
- Market linkage with the off-taker in the global value chain





An aerial photograph of a dense forest with trees showing autumn colors (greens, yellows, oranges, and reds). A large, semi-transparent infinity symbol is centered over the image. The text "May The Forest Be With You" is written in white, bold, sans-serif font across the middle of the infinity symbol.

May The Forest Be With You



**FORESTS<sup>TM</sup>  
FOR ALL  
FOREVER**