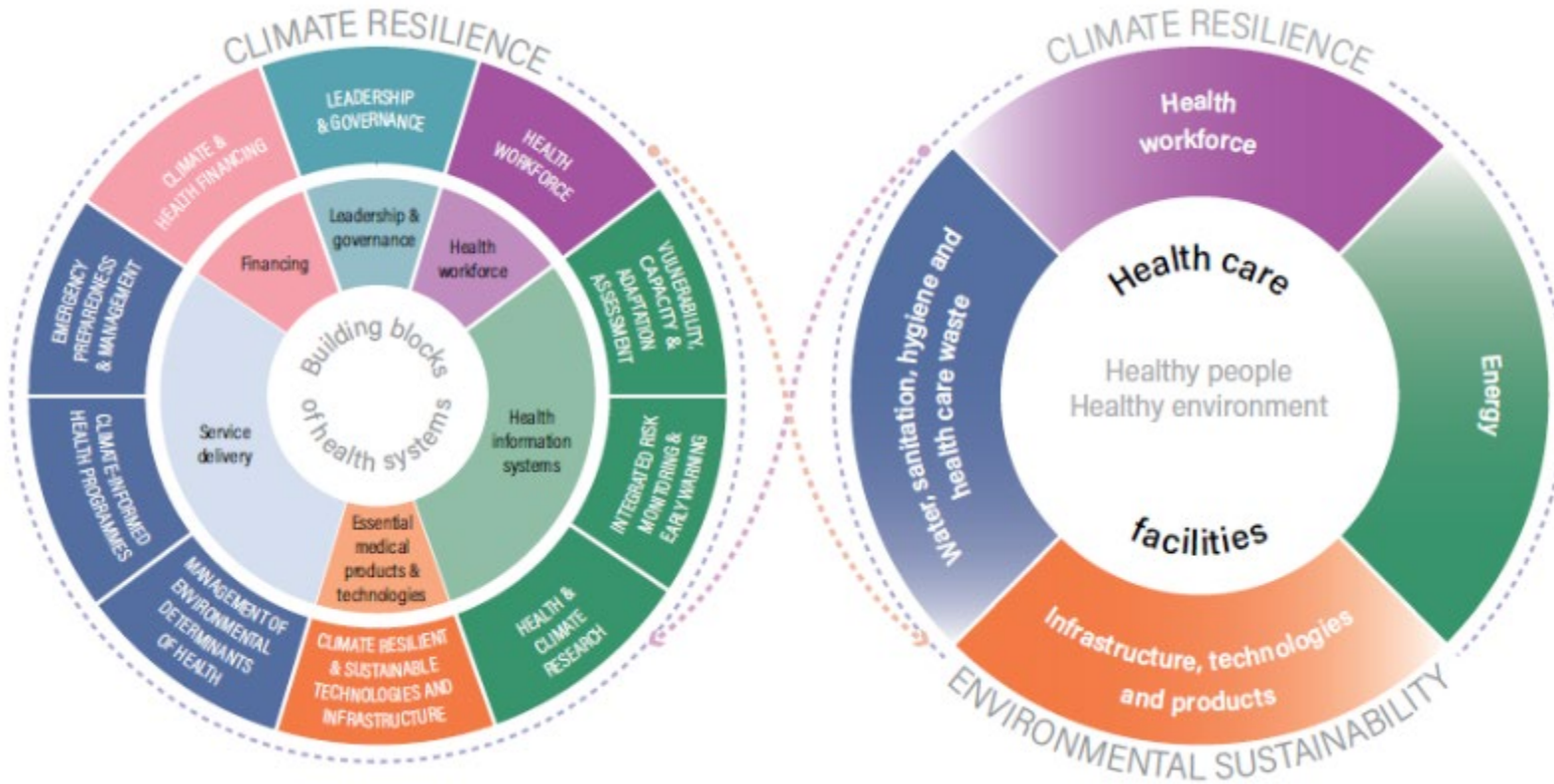


Definition

Climate resilient and environmentally sustainable health care facilities can be defined as those capable to anticipate, respond to, cope with, recover from and adapt to climate-related shocks and stresses, while minimizing negative impacts on the environment and leveraging opportunities to restore and improve it, so as to bring ongoing and sustained health care to their target population and protect the health and well-being of future generations.

Built on the building blocks of health systems



- Health Workforce
- Climate Resilient Water, Sanitation & Hygiene and Healthcare Waste Management
- Sustainable Energy
- Non-WASH, non-Energy infrastructure, products and technologies

Now with increased emphasis on low carbon interventions and technologies

Linking climate change impacts with response options

Climate change exposure pathways

- Extreme weather events (Floods, drought, wind, rain)
- Heat stress
- Air quality
- Water quality and quantity
- Food security and safety
- Vector distribution and ecology



Climate resilient health systems should ensure

- **Health workforce:** accessible to staff, emergency focal points identified, emergency SOPs, coping mechanisms for increased case-loads, occupation health and safety measures particularly on thermal extremes
- **WASH:** Safely managed water and sanitation, adequate health care waste management, environmental cleaning appropriate for IPC
- **Sustainable Energy:** Back-up electricity supply
- **Infrastructure:** Facilities able to cope with/adapt to extreme weather events (e.g. flooding, wind speeds), adapted for vector control, use low carbon technology to reduce costs, appropriate building design (green, thermal extremes)

INFRASTRUCTURE, TECHNOLOGY AND PRODUCTS INTERVENTIONS

- **Adaptation of current systems and infrastructures:** Building regulations implemented in the construction and retrofitting of health care facilities to ensure climate resilience and environmental sustainability.
- **Promotion of new systems and technologies:** Adopt new technologies and processes that can provide climate resilience, environmental sustainability and enhanced health service delivery.
- **Sustainability of health care facility operations:** Adopt and procure low environmental impact technologies, processes and products to enhance climate resilience and environmental sustainability



Background



Access the background document

Air pollution



Guidance on air pollution and health

WASH



Guidance on WASH and health

Solid waste



Guidance on solid waste and health

Chemicals



Guidance on chemicals and health

Radiation



Guidance on radiation and health

Climate change



Guidance on climate change and health

Nature and health



Guidance on nature and health

Safe environments and mobility



Guidance on safe environments and mobility

Safe and healthy food



Guidance on safe and healthy food

Priority settings for action



Guidance on priority settings for action

Cross-cutting topics

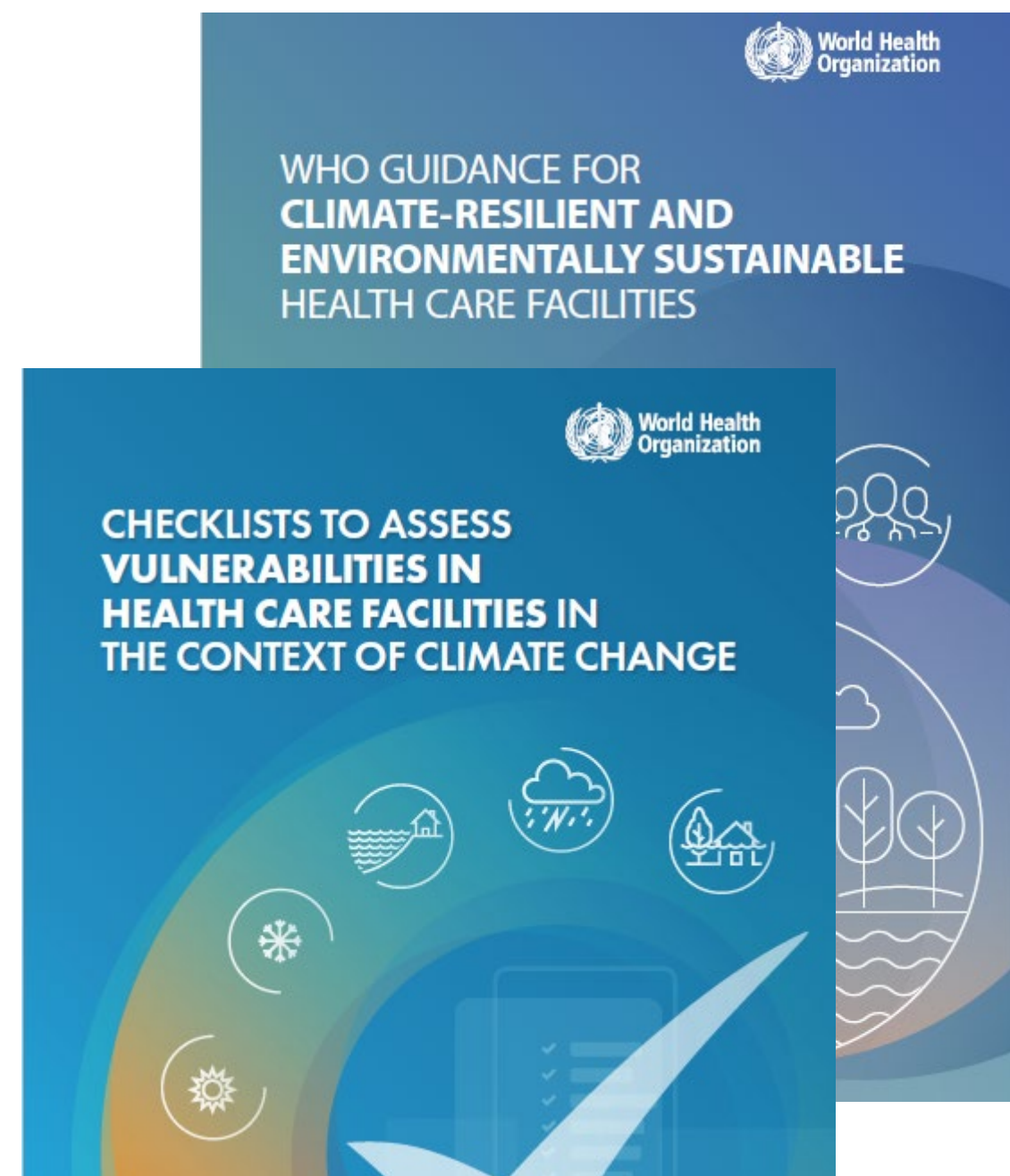


Guidance on cross-cutting topics

- Global repository of interventions for creating healthier environments and improving health
- Overview and easy access of 500 actions

CRESHCF facility assessment tool

- Understanding the risks, vulnerabilities and impacts of climate change on health care facilities
- Identifies key areas to strengthen in each facility, and informs decisions on which facilities to prioritize
- Practical tool, already used by number of countries in Western Pacific
- Digital version (kobotoolkit) or paper based



ATACH

ATACH has 4 main objectives

1 Advocate for and enable concrete, ambitious commitments and priorities on climate change and health

2 Support member states to deliver commitments and priorities

3 Identify and promote evidence-based best practices, solutions and strategies

4 Advocate for and support development of innovative climate change and health solutions



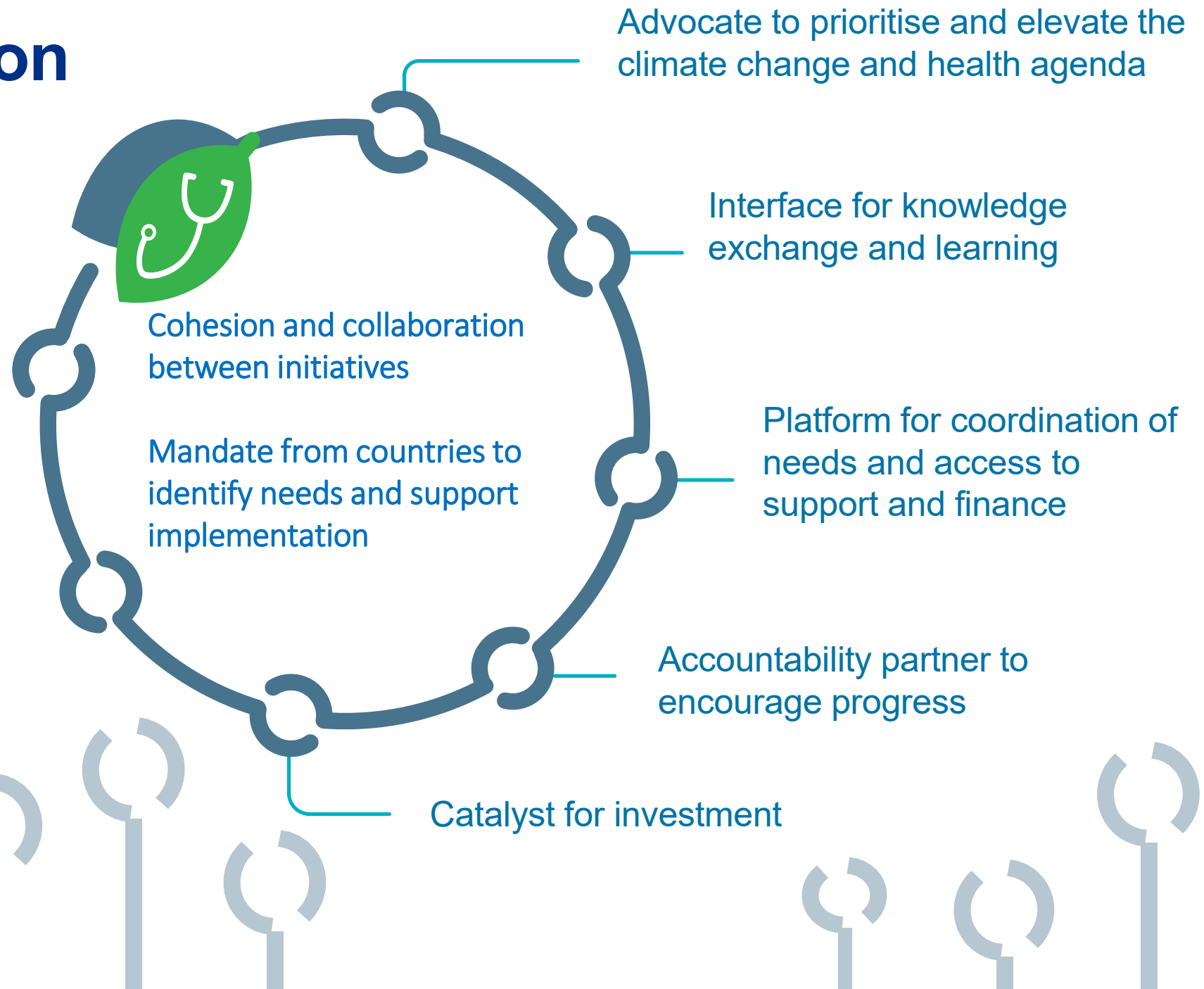
**Commitments
and progress**



Solutions

Value proposition

There are many existing climate change and health initiatives, and more will emerge in future. What sets ATACH apart, and what can it do that others can't?



Thank you!



World Health
Organization

Western Pacific Region

Let's build climate resilience
in Healthcare Facilities
across the Western Pacific
Region!

