

*The views expressed in this presentation are the views of the author/s and do not necessarily reflect the views or policies of the Asian Development Bank, or its Board of Governors, or the governments they represent. ADB does not guarantee the accuracy of the data included in this presentation and accepts no responsibility for any consequence of their use. The countries listed in this presentation do not imply any view on ADB's part as to sovereignty or independent status or necessarily conform to ADB's terminology.*



**ASIAN DEVELOPMENT BANK BUSINESS OPPORTUNITIES FAIR 2025**

**16-18 SEPTEMBER 2025 | ADB HEADQUARTERS, MANILA**

**QUALITY INNOVATION IMPACT**

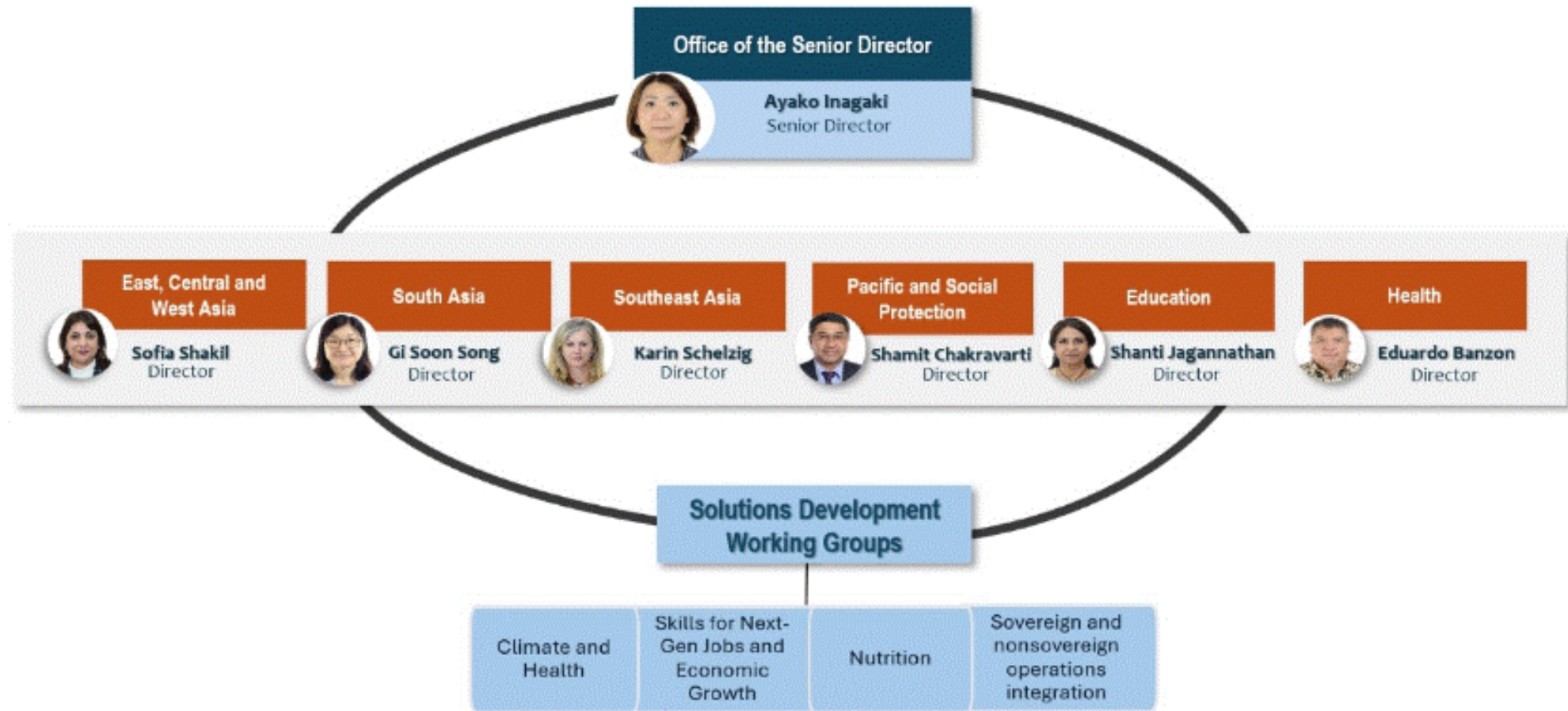
# Human and Social Development

## Investing in People. Empowering Futures.



Scan for HSD Pipeline Projects 2025-2028

# HSD Organogram



# Focus Areas of the HSD Pipeline



# ADB's Social Protection Vision and Approach



Source: Asian Development Bank.

## TA 10119: Developing Inclusive and Resilient Social Protection Systems in Asia and the Pacific

- Studies and capacity building on inclusive and resilient social protection systems and policies completed
- Social protection measures with resilient integrated solutions developed and disseminated
- Inclusive and resilient social protection systems in operations supported



### Firm or individual consultants

- Social development specialists
- Social protection specialists
- Monitoring, evaluation, and survey specialists
- Researchers
- Country project managers, national coordinators
- Writers and editors
- Knowledge Management Coordinators



# Poverty and Social Analysis (PSA)

*PSA is an integral part of ADB operations. Conducting a good PSA increases the return of ADB's investments in terms of sustainable socioeconomic development.*



## TA 9896: Supporting Resilience and Empowerment: Strengthening Poverty and Social Analysis

- Analytical tools for poverty and social inclusion updated and shared with DMCs
- Strategic research and knowledge exchange on poverty reduction and social inclusion strengthened
- Innovative approaches to poverty and social analysis applied in selected projects



### **Firm or individual consultants**

- Social development specialists
- Disability inclusion specialists
- Communications and Dissemination specialist
- Various sector experts
- Technical editors
- Knowledge Management Coordinators

For more details: [poverty@adb.org](mailto:poverty@adb.org)



**ASIAN DEVELOPMENT BANK BUSINESS OPPORTUNITIES FAIR 2025**  
16-18 SEPTEMBER 2025 | ADB HEADQUARTERS, MANILA  
**QUALITY · INNOVATION · IMPACT**



# Thank You!

**SHAMIT CHAKRAVARTI**

Director, Human and Social Development  
Sectors Department 3

[schakravarti@adb.org](mailto:schakravarti@adb.org)