



Ministry of Foreign Affairs of the  
Netherlands

MINISTRY OF FOREIGN AFFAIRS OF DENMARK  
**DANIDA** | INTERNATIONAL  
DEVELOPMENT COOPERATION



This is not an ADB material. The views expressed in this document are the views of the author/s and/or their organizations and do not necessarily reflect the views or policies of the Asian Development Bank, or its Board of Governors, or the governments they represent. ADB does not guarantee the accuracy and/or completeness of the material's contents, and accepts no responsibility for any direct or indirect consequence of their use or reliance, whether wholly or partially. Please feel free to contact the authors directly should you have queries.



# Financing Locally-Led Climate Action (FLLoCA) Program

Margaret Arnold, World Bank, [marnold@worldbank.org](mailto:marnold@worldbank.org)

April 2023





World Bank Group

# CLIMATE CHANGE ACTION PLAN

2021-2025

Supporting Green, Resilient,  
and Inclusive Development

- Increase climate finance: 35% climate co-benefits; 50% to support adaptation and resilience
- Focus on climate results and impact, including new metrics on adaptation and resilience goals
- Improve and expand diagnostics: Country Climate and Development Reports (CCDRs)
- Reduce emissions and vulnerabilities in key systems: energy, ag/food systems, transport, urban and manufacturing
- Support a Just Transition for All out of coal
- Align Bank financing flows with the Paris Agreement by July 1, 2023



# The climate crisis is a social crisis.

---

## Key challenges:

- Social inequality and poverty drive vulnerability to climate change
- Lack of citizen engagement in climate decision making
- Local experience and traditional knowledge are often invisible and undermined by outside actors.
- Less than 10% of climate finance is prioritized for local level!





# Principles for locally-led climate action

(developed by Global Commission for Adaptation)

---

Devolving decision making to the lowest appropriate level.

Addressing structural inequalities faced by women, youth, persons with disabilities, excluded ethnic groups, etc.

Providing patient and predictable funding that can be accessed more easily

Investing in local capabilities to leave an institutional legacy

Building a robust understanding of climate risk and uncertainty

Flexible programming and learning

Ensuring transparency and accountability

Collaborative action and investment



Kenya's Financing  
Locally-Led  
Climate Action  
(FLLoCA) delivers  
the first, national  
scale model of  
devolved climate  
finance and  
addresses key  
challenges:

| Challenge:  | FLLoCA delivers:   |
|---|--|
| Less than 10% of climate finance is prioritized for local level   | Hybrid PforR/IPF that channels 90% of its funding to local govts and communities   |
| Social inequality and poverty drive vulnerability to climate change   | Focus on most vulnerable counties and the most vulnerable within those counties  |
| Local experience and traditional knowledge are often invisible and undermined by outside actors                               | Strengthens capacity of county and local govts to collaborate in joint decision making with their citizens                                 |
| National policies and climate commitments not informed by realities on the ground, small scale efforts challenged to scale up | National scale program that builds the vertical linkages between local govts and national entities for improved MRV on climate investments |
| International climate finance fragmented and difficult to access – particularly for subnational entities                      | Platform to crowd in other sources of climate finance, and approach for counties to access GCF, etc.                                       |



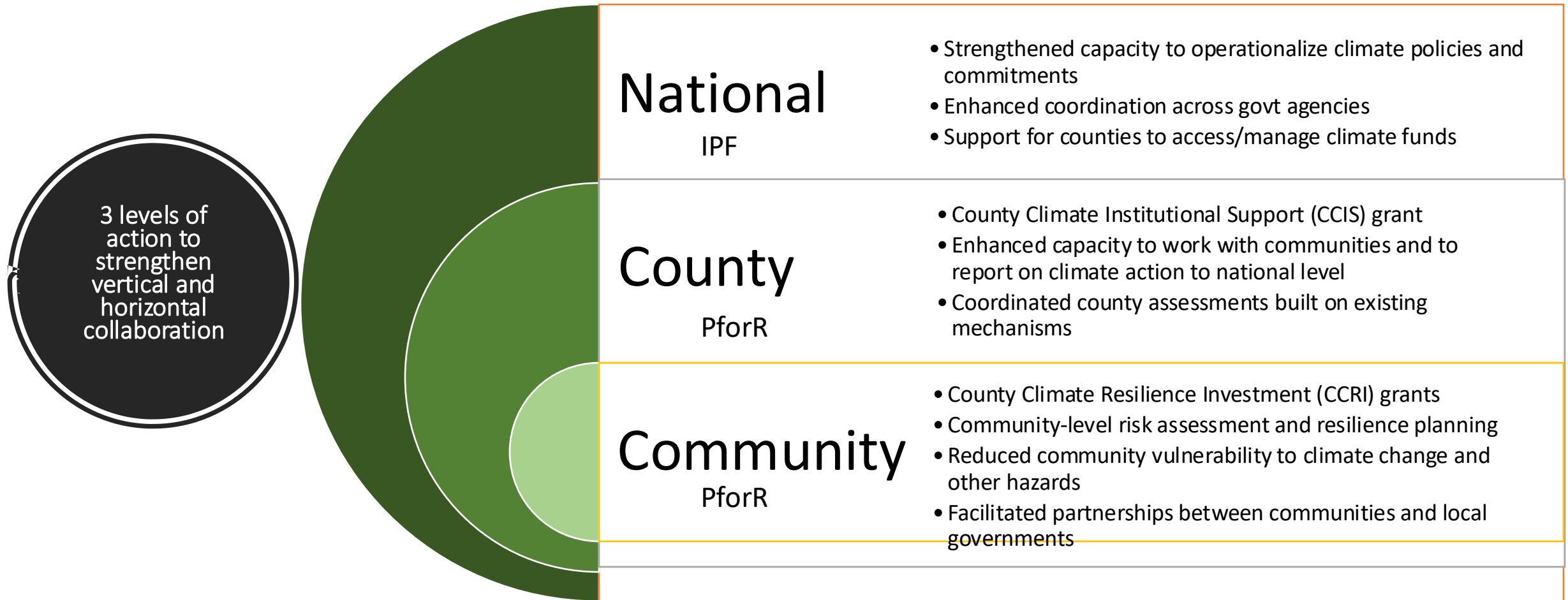
## Program funding

- Led by the National Treasury and Planning in collaboration with Ministry of Environment (CCD), CoG other relevant MDA's.
- 5 Year program – three annual county grant cycles



# Kenya Financing Locally Led Climate Action (FLLoCA)

PDO: to deliver locally-led climate resilience actions and strengthen county and national governments' capacity to manage climate risks.



FLLoCA's performance mechanism includes two grants to incentivize participatory processes and local action

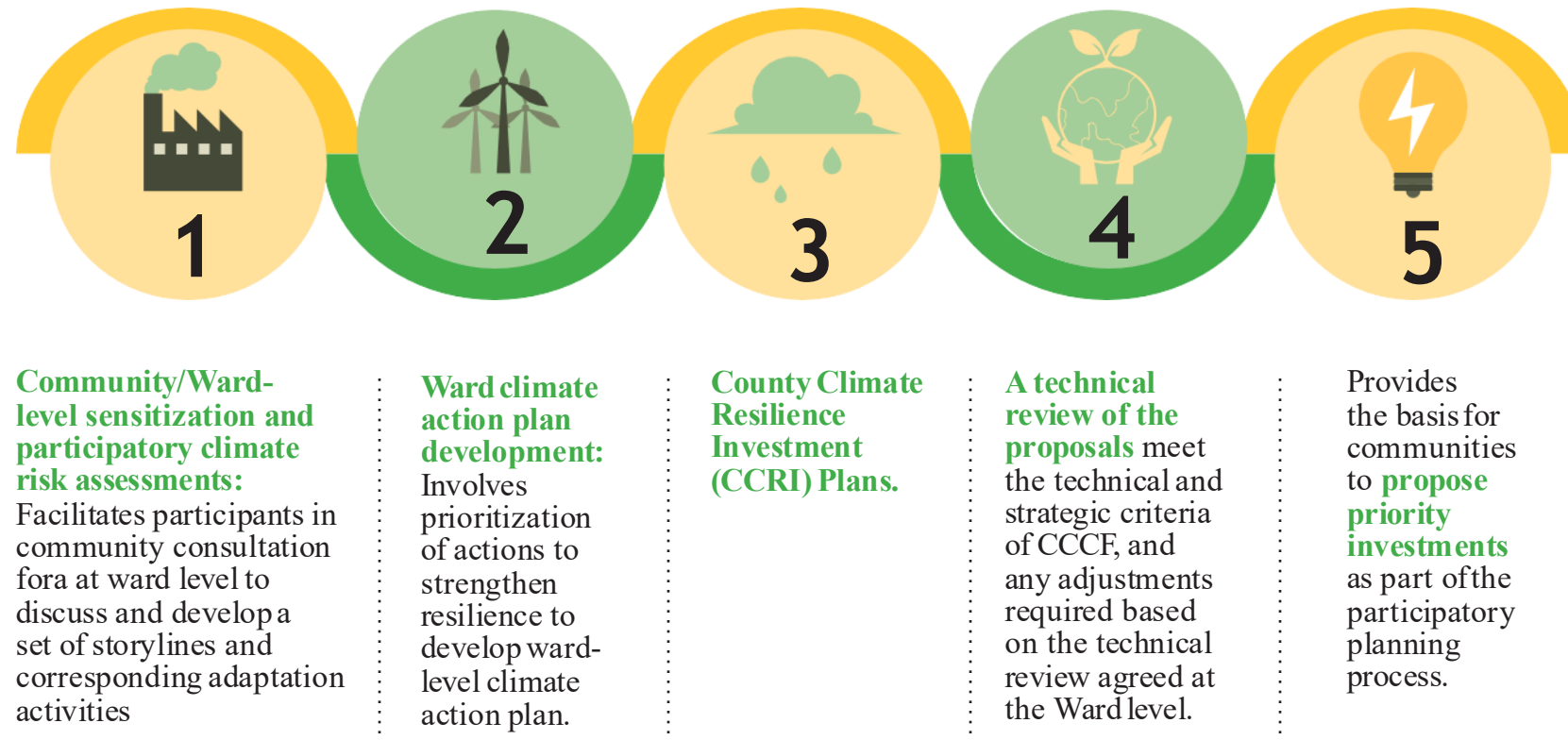
# One Program – Two modalities

| Modality   | focal level    | focal performance areas / objectives  |
|------------|----------------|---|
| <b>IPF</b> | National level | <ul style="list-style-type: none"> <li>• Capacity building for cross sectoral coordination on CCA</li> <li>• Climate Data Management Capacity</li> <li>• Support for Program Management</li> <li>• <b>Provide Capacity support to Counties on Locally Led CCA</b></li> </ul>  |
| <b>P4R</b> | County level   | <p><b>County Climate Institutional Support (CCIS) Grant</b></p> <ul style="list-style-type: none"> <li>• Institutionalised arrangements for climate resilience (CEC member in charge of CC, CCU in place; CCCF legislation)</li> <li>• Mechanisms for participatory Climate resilience planning</li> </ul> <p><b>County Climate Resilience Investment (CCRI) Grant</b></p> <ul style="list-style-type: none"> <li>• County Climate Change Fund established and capitalized</li> <li>• County Climate Action Plans prepared and implemented</li> <li>• Mainstreaming of Climate Action into County Gov operations</li> <li>• Enhanced County financing for Climate action</li> <li>• <b>Delivering climate action</b></li> </ul> |

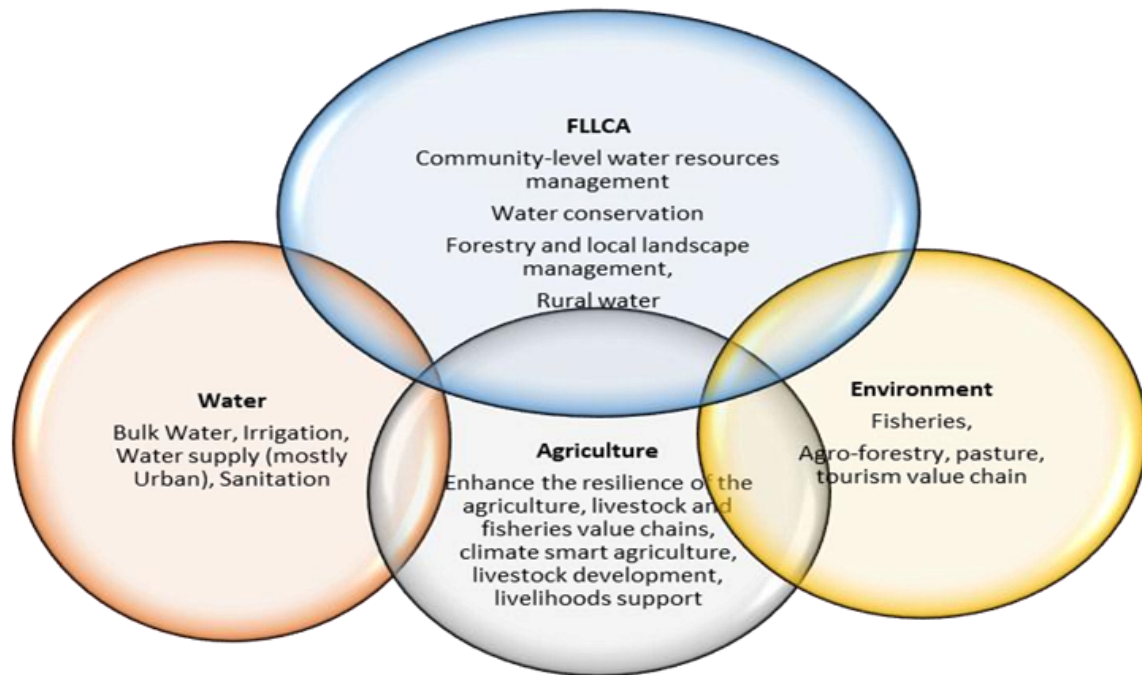


# PARTICIPATORY CLIMATE RISK ASSESSMENT AND ACTION PLANNING MODEL

## KEY STEPS :



# Investment grants support key entry points for community resilience



# Where are we so far?

- 45 Counties passed County Climate Change Acts (CCAs) and met all the minimum access conditions. Only 5 had CCAs before FLLoCA.
- Many counties have allocated their own funds towards their county FLLoCCA programs. This will be verified during the annual performance assessment.
- FLLoCCA is already enhancing coordination within GoK with closer working between National Treasury, Environment, CoG, Counties and other departments/agencies
- CCIS grants have been distributed to counties
- PCRA methodology piloted in Vihiga County, finalized, and all Counties have been trained
- PCRA now being rolled out