




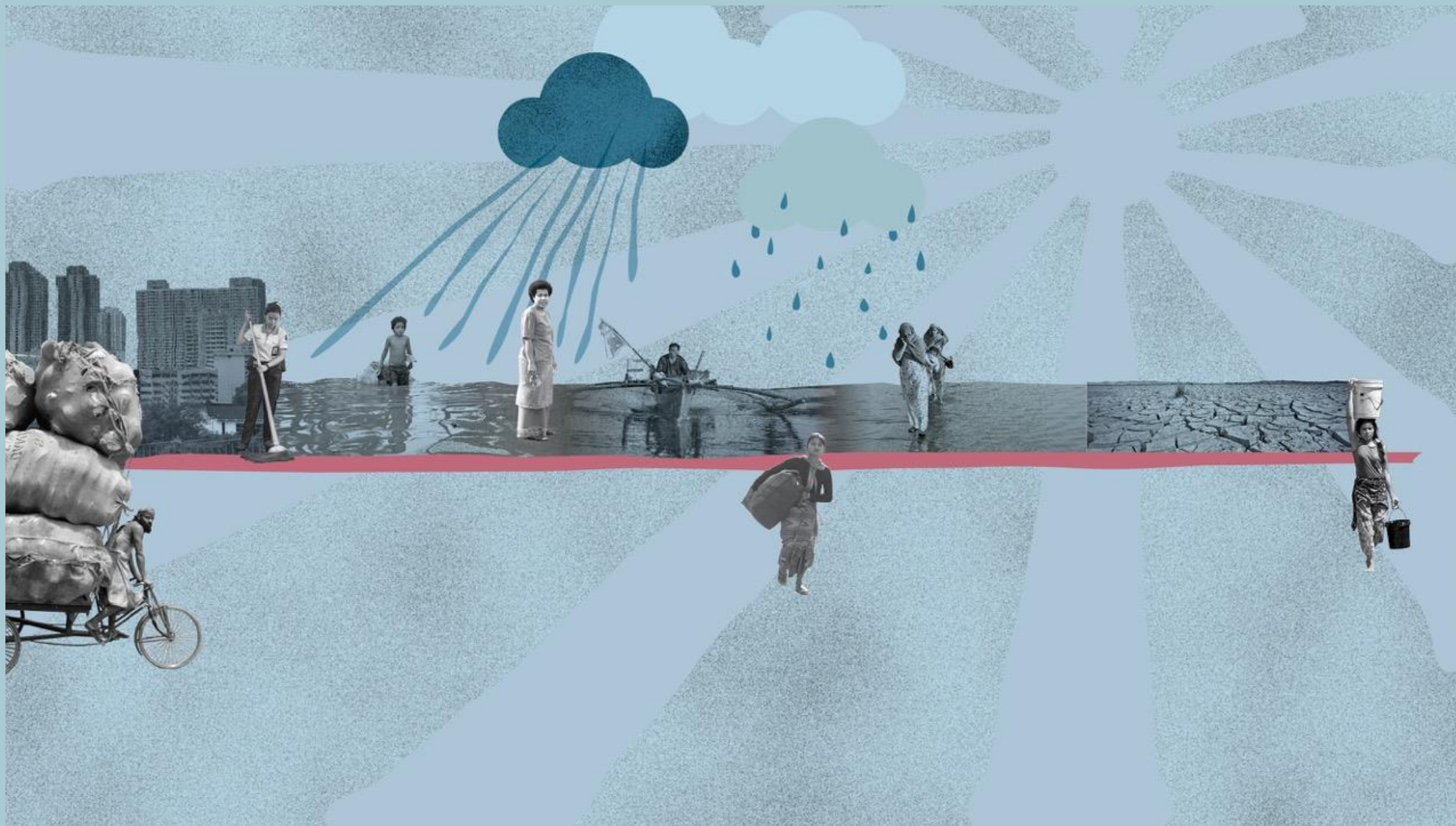
The views expressed in this presentation are the views of the author/s and do not necessarily reflect the views or policies of the Asian Development Bank, or its Board of Governors, or the governments they represent. ADB does not guarantee the accuracy of the data included in this presentation and accepts no responsibility for any consequence of their use. The countries listed in this presentation do not imply any view on ADB's part as to sovereignty or independent status or necessarily conform to ADB's terminology.



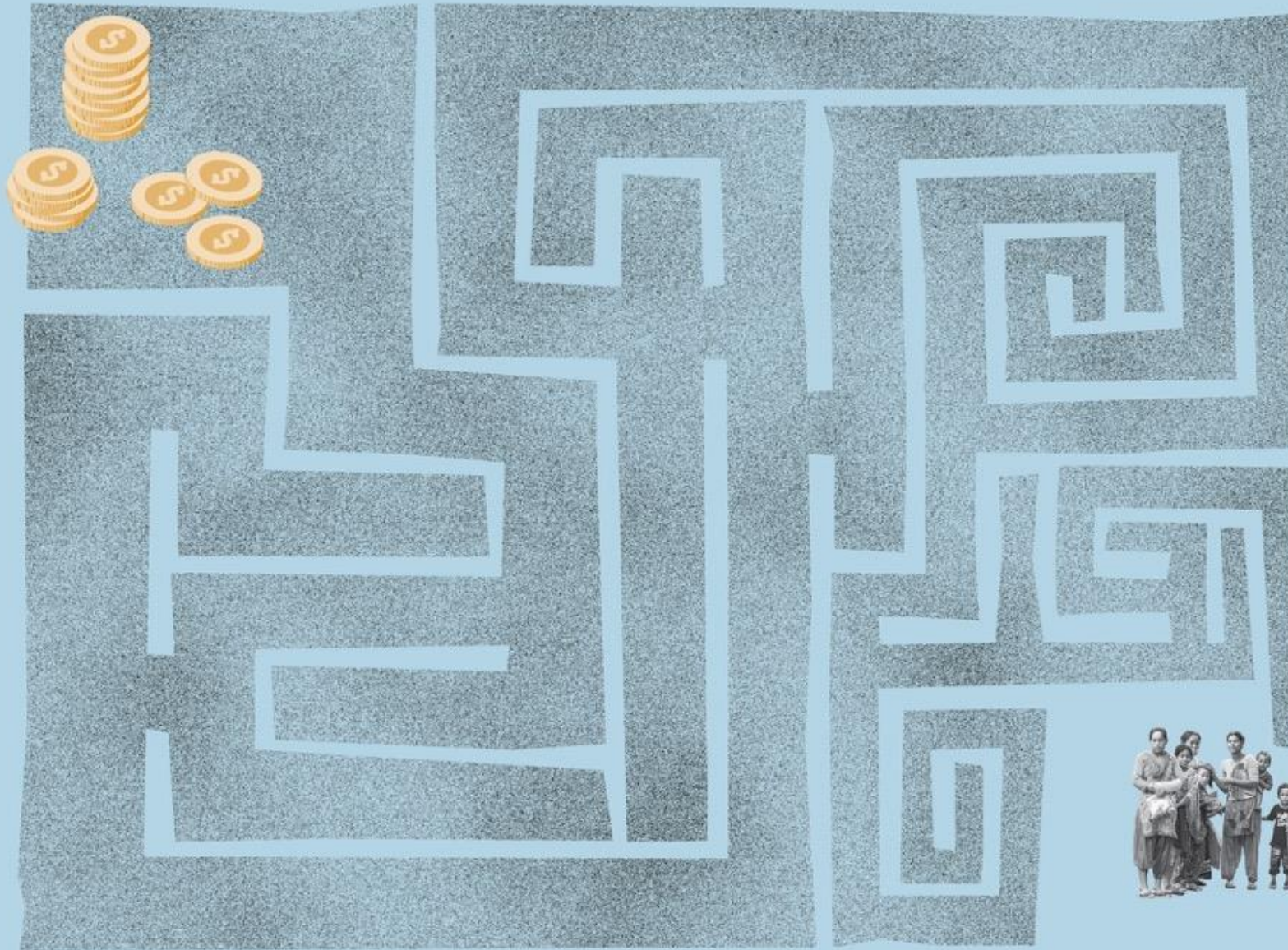
Strengthening Climate Resilience at Scale While Leaving No One Behind



ISSUES



Climate-Poverty-Gender Nexus

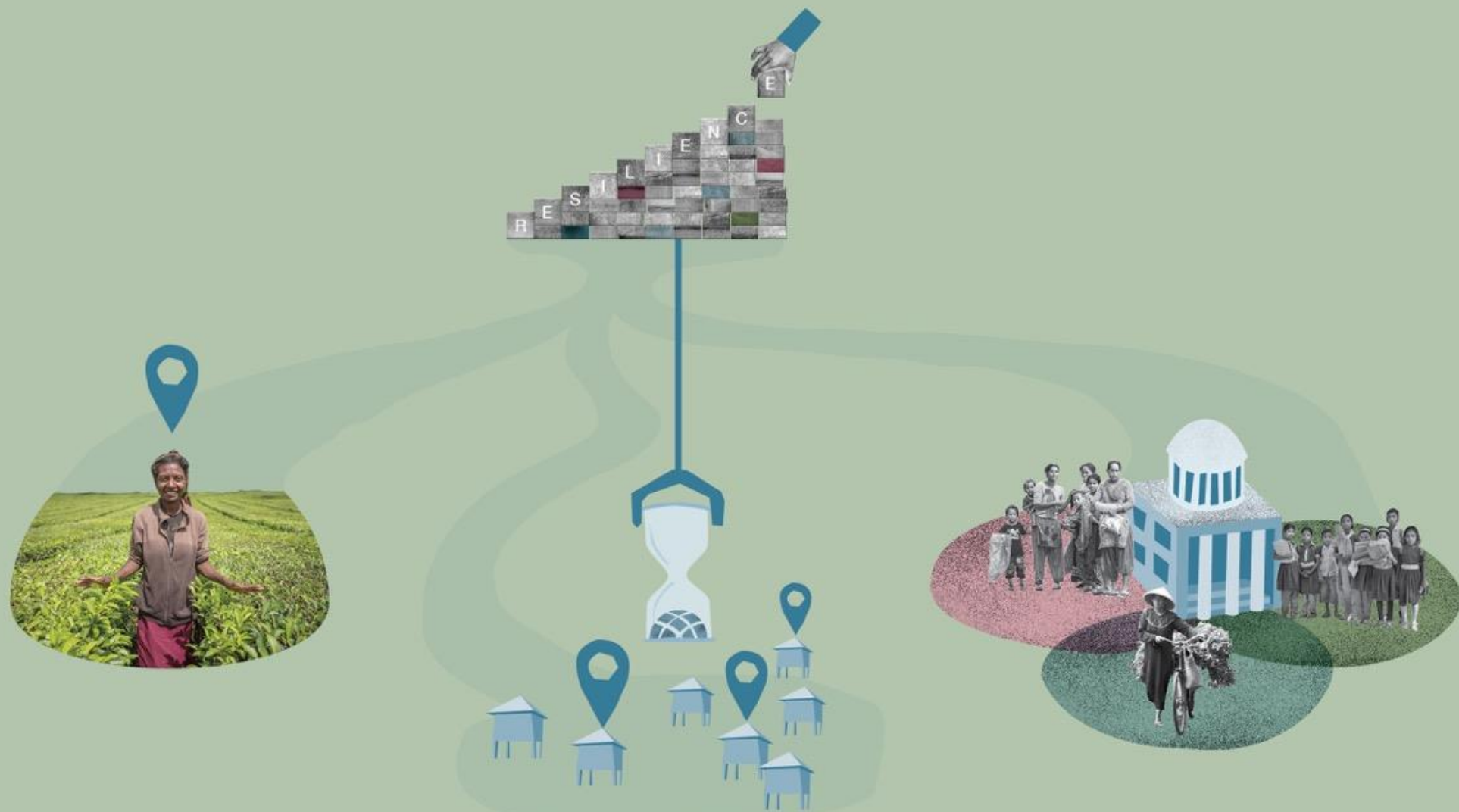


Climate finance not reaching the local level where it matters most

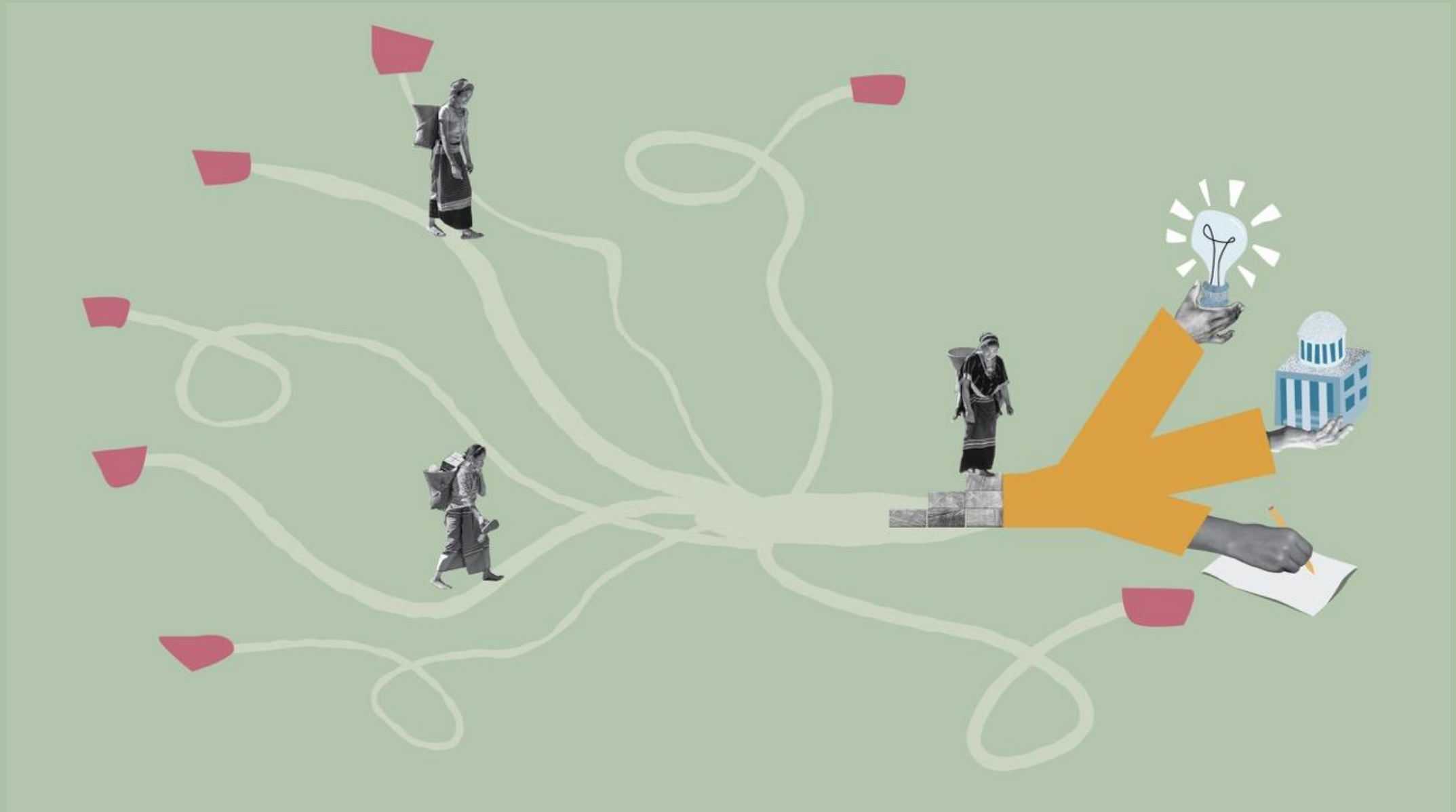


Climate resilience initiatives do not automatically address inequality

SOLUTIONS



Targeted resilience investments



Accompanied with knowledge, capacity, and institutions at the local level



Strengthening systems to unlock flow of climate finance

CRPP

Community Resilience Partnership Program (CRPP)



**CRPP
Investment**



CRPP outputs

Knowledge
and Action
Research

Project
Preparation
+
Pilot

Capacity
Building

Examples:

- Adaptive social protection
- TVET for climate resilience
- Community-driven rural development
- Climate resilient urban settlement upgrade
- Resilient microfinance
- Community-based forestry
- Women-focused resilient value chain



CRPP Trust Fund



Gender Window to promote women-focused investments in resilience



Scale up ADB's climate actions through social sectors, gender, and livelihoods

CRFPF delivered through partnerships



Partners that have contributed to the development of the CRFPF

