

This is not an ADB material. The views expressed in this document are the views of the author/s and/or their organizations and do not necessarily reflect the views or policies of the Asian Development Bank, or its Board of Governors, or the governments they represent. ADB does not guarantee the accuracy and/or completeness of the material's contents, and accepts no responsibility for any direct or indirect consequence of their use or reliance, whether wholly or partially. Please feel free to contact the authors directly should you have queries.



BUILD BACK BETTER

Sector Dialogues



DSWD KALAHI-CIDSS

National Community-Driven Development Project

WASH Interventions

Background

- On November 8, 2013, Typhoon Haiyan, locally known as Typhoon Yolanda, made landfall in Region VIII. It was one of the strongest tropical cyclones ever recorded devastating the provinces of Leyte, Samar, and Eastern Samar.
- Damages on essential infrastructure disrupted access to clean water. KALAHI CIDSS initiated **Water System Sub-Project** in Barangay Casili-on, Salcedo, Eastern Samar as part of the post-disaster recovery interventions.



Source: The Structural Engineer.
<https://www.thestructuralengineer.info/news/philippines-devastated-after-typhoon-haiyan>

Background

- KALAHI-CIDSS National Community-Driven Development Project aims to **rehabilitate and strengthen disaster-affected communities** through community-driven initiatives
- **Water System Sub-Project** in Barangay Casili-on, Salcedo, Eastern Samar
 - ✓ Address the critical need for clean water
 - ✓ Ensuring that affected communities could rebuild stronger
 - ✓ Become more resilient to future disasters



Disaster Impact on WASH

- Residents of Barangay Casili-on primarily used the deep well & Level-1 water system or Jetmatic pumps
- Typhoon caused structural damage in the community
- Household residents take time to fetch water from a deep well catering to the needs of 131 households in 2014
- Women and children were mostly affected in accessing water



WASH Intervention

Level up the existing deep well to a better and safer water supply system

- ✓ Impact of the disaster & application of the BBB Principle
- ✓ Administration and facilitation of willingness to avail & pay (WTAP) forms
- ✓ Preparation of the community's water safety plan
- ✓ Relevance to disaster response & recovery



Build Back Better on WASH

Community participation and inclusive approach



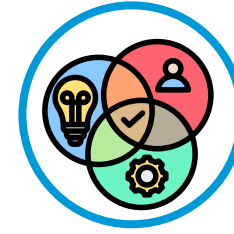
Risk Reduction

- Conduct of site validation and series of tests and assessment prior to use
- Continuous monitoring of facilities



Local Leadership

- Community consultations & active participation
- Dialogues with municipal engineers on appropriate materials



Capacity Development

Capacity building and skill transfer for community-led O&M management



Inclusion & Equity

Involvement of women, girls, and vulnerable groups in decision-making

Results on WASH Intervention

- Provided an accessible and safe water supply to **179** households



182 families



56 4Ps beneficiaries



15 PWDs



72 senior citizens



11 solo parents

- Contributed to public health by preventing waterborne diseases, enhancing the quality of life, protecting the environment through responsible water management, and promoting social development by empowering communities, particularly women