

Module 5

Designing implementable LRPs: Key building blocks

This is not an ADB material. The views expressed in this document are the views of the author/s and/or their organizations and do not necessarily reflect the views or policies of the Asian Development Bank, or its Board of Governors, or the governments they represent. ADB does not guarantee the accuracy and/or completeness of the material's contents, and accepts no responsibility for any direct or indirect consequence of their use or reliance, whether wholly or partially. Please feel free to contact the authors directly should you have queries.

Key Building Blocks



Presenter:
Rangina Nazrieva



Presenter:
Munguntuya Otgonjargal

In this session we will cover:



Factors to
consider



Key
building
blocks of
LR



Q&A

Factors to Consider: Livelihood Restoration Framework

01

Type of project:
Linear/Non-linear

02

Cause of impact: Land acquisition, displacement, resettlement/ demographic movements/ environmental degradation/ public assets and services/ national, regional, and local economy and markets

03

Time of impact:
Pre-construction
/ Construction/
Operation

04

Impact area: Multiple differentiated areas

05

Affected persons:
Women, disabled, elderly, youth

06

Livelihood Outcomes:
Positive or negative/permanent or temporary/short or long-term/significant or insignificant

07

Livelihood Process:
Engagement, assessment, and Impact mitigation

The building blocks of livelihood restoration

- Competent expertise
- Stakeholder engagement
- Adequate funding
- Assessment of social impacts
- Viable measures
- Monitoring and evaluation

⇒ The building blocks of livelihood restoration are interdependent, synchronized, and require adaptive learning approach!

⇒ Assist income earning potential at least equivalent or improved income earning

Competent expertise

Engage **qualified and experienced experts** to undertake the assessment of **social impacts, valuation** of losses and **livelihood restoration**

Work with **appropriate and effective qualified experts** and organizations with **demonstrated capacity** for undertaking livelihood restoration **programs** as well as **market research to:**

- carry out impact assessment, livelihood restoration and skills training
- undertake capacity building with EA/IA staff on livelihood restoration

Ensure **monitoring and evaluation** by qualified and experienced experts

Assessment of social impacts

01

Comprehensive assessment of the **socio-economic status and livelihood systems** of displaced persons to establish a socio-economic **baseline and losses**:

- Assets
- Means of livelihood
- Sources of income and sustenance
- Social and natural context or ecosystem

02

Prepare **reliable inventories**, detailed **measurement and valuation** surveys to determine:

- use value of losses: quality, quantity, purpose and functioning
- monetary value of losses: replacement cost

03

Value the **cost of replacing all** lost resources and sources of income and sustenance

Stakeholder Engagement

- **Map key stakeholders** to build partnerships and collaborate
- **Consult the displaced persons** throughout the **assessment** of social impacts and development of **viable compensation** and livelihood **restoration measures**
- Undertake **inventory** of losses and detailed **measurement survey** in the **presence of displaced persons**
- **Disclose** all relevant information
- Establish a **grievance mechanism** to receive and resolve displaced person's complaints related to design, compensation, and livelihood restoration

Adequate funding

Based on valuation of livelihood losses/impacts on livelihood systems and valuation of the cost of all entitlements (measures and services):

- Identify all **specific sources** of funding
- Identify **legal constraints** in country systems in **financing livelihood** restoration
- Cover the cost/bridge the gaps **from loan funds**
- Indicate **government and project shares** of the **cost** of compensation and livelihood restoration
- Ensure **timely availability of the required funds** from all relevant sources
- Stipulate **channels and procedures** for **transfer of funds** to the project, affected persons and relevant livelihood restoration service providers
- Include **adequate contingencies** to address unanticipated impacts and corrective actions

Consider resources for capacity building to manage planning and implementation of livelihood restoration

Viability measures for Livelihood Restoration

Prepare a **Livelihood Restoration Plan (LRP)** applying **replacement principles**

Consider the sustainability of income generation activities and the interests and capacities of the displaced persons

Identify **options**, i.e., reliable income generation for years to come

Consider **combination of different types** of assistance

Income **replacement to sustain livelihoods** until the displaced persons **can reestablish equivalent** income generation capacity

Assist displaced persons to develop an individual income generation and skills development plan

Viable measures for land use restriction

Loss of resources and Livelihood practices is critical for natural resource dependent communities

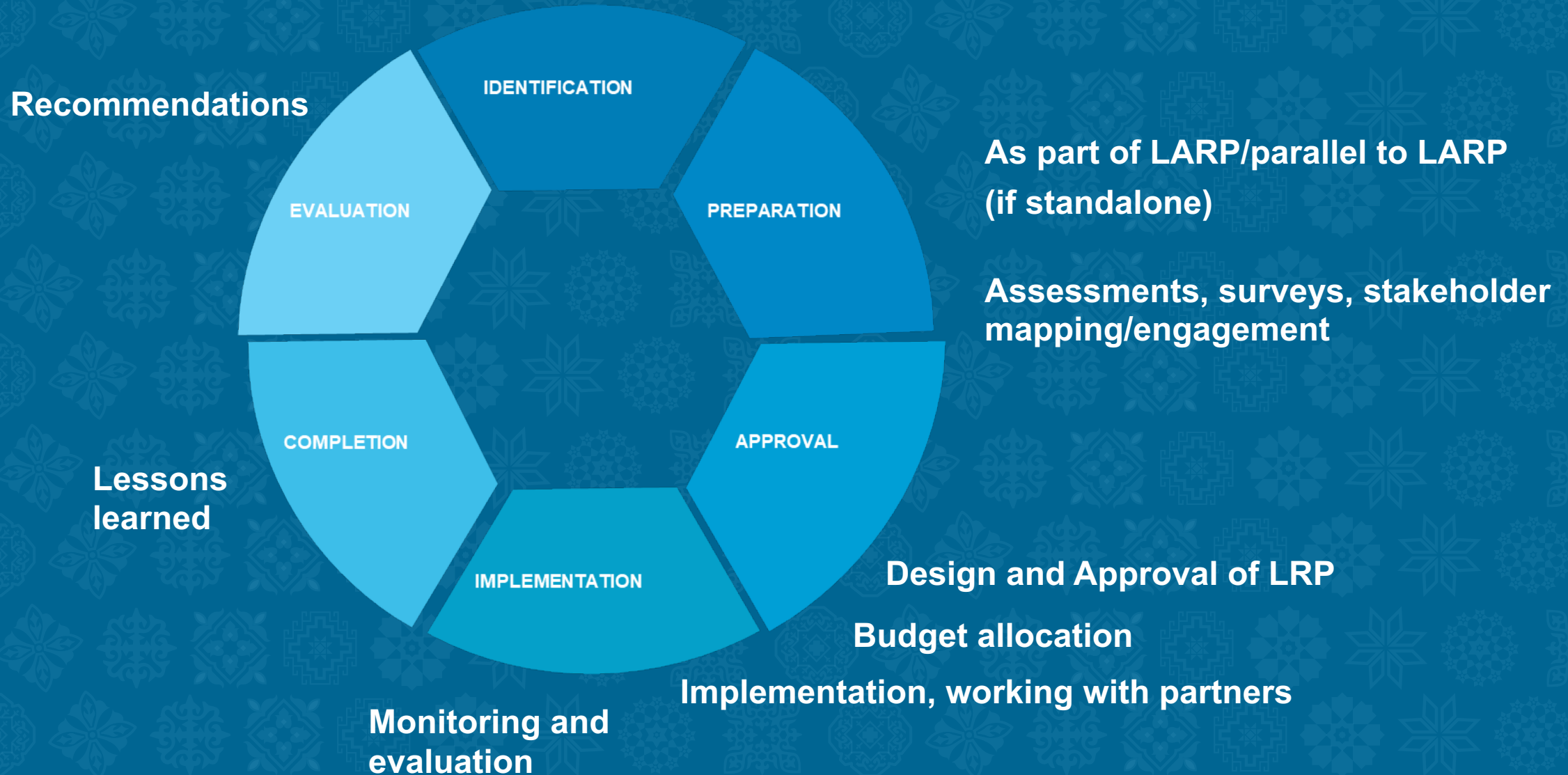
Assess and identify in the social impact assessment:

- Affected **land use practices** and **resources** in the **livelihood systems** of DPs
- **Livelihood and asset** losses caused by the project
- DPs **from different communities** with land use **rights to the restricted** land
- Different land **tenure systems**, especially among **indigenous communities**

Develop viable means of generating equivalent livelihoods with the

- **Transition to alternative** sustainable practices **with equivalent** income/sustenance capacity (continued and regulated access)
- Provide **access to comparable resources** in suitable alternative locations and/or
- **Transition** displaced persons to **culturally appropriate alternative** income generation activities

Integration with the Project Cycle



Monitoring and Evaluation

01

Monitoring, evaluation and reporting are key components

02

Types: Internal and external monitoring

03

Ensure adequate funding for external monitoring and LRP completion audit

Have any questions or clarifications? Let us know

Raise your hand, write in a piece of paper or approach any of our
moderators or rapporteurs