

This is not an ADB material. The views expressed in this document are the views of the author/s and/or their organizations and do not necessarily reflect the views or policies of the Asian Development Bank, or its Board of Governors, or the governments they represent. ADB does not guarantee the accuracy and/or completeness of the material's contents, and accepts no responsibility for any direct or indirect consequence of their use or reliance, whether wholly or partially. Please feel free to contact the authors directly should you have queries.



## **Adaptive Social Protection at ADB**

**Wendy Walker**

**Chief of Social Development Thematic Group, ADB**

**Community Resilience Partnership Program  
Partnership Forum 2023**

# Social Protection Directional Guide

Towards Inclusive and Resilient Social Protection  
**SOCIAL DEVELOPMENT THEMATIC GROUP**



## STRATEGY 2030 SOCIAL PROTECTION DIRECTIONAL GUIDE

DECEMBER 2022

# Social Protection Directional Guide

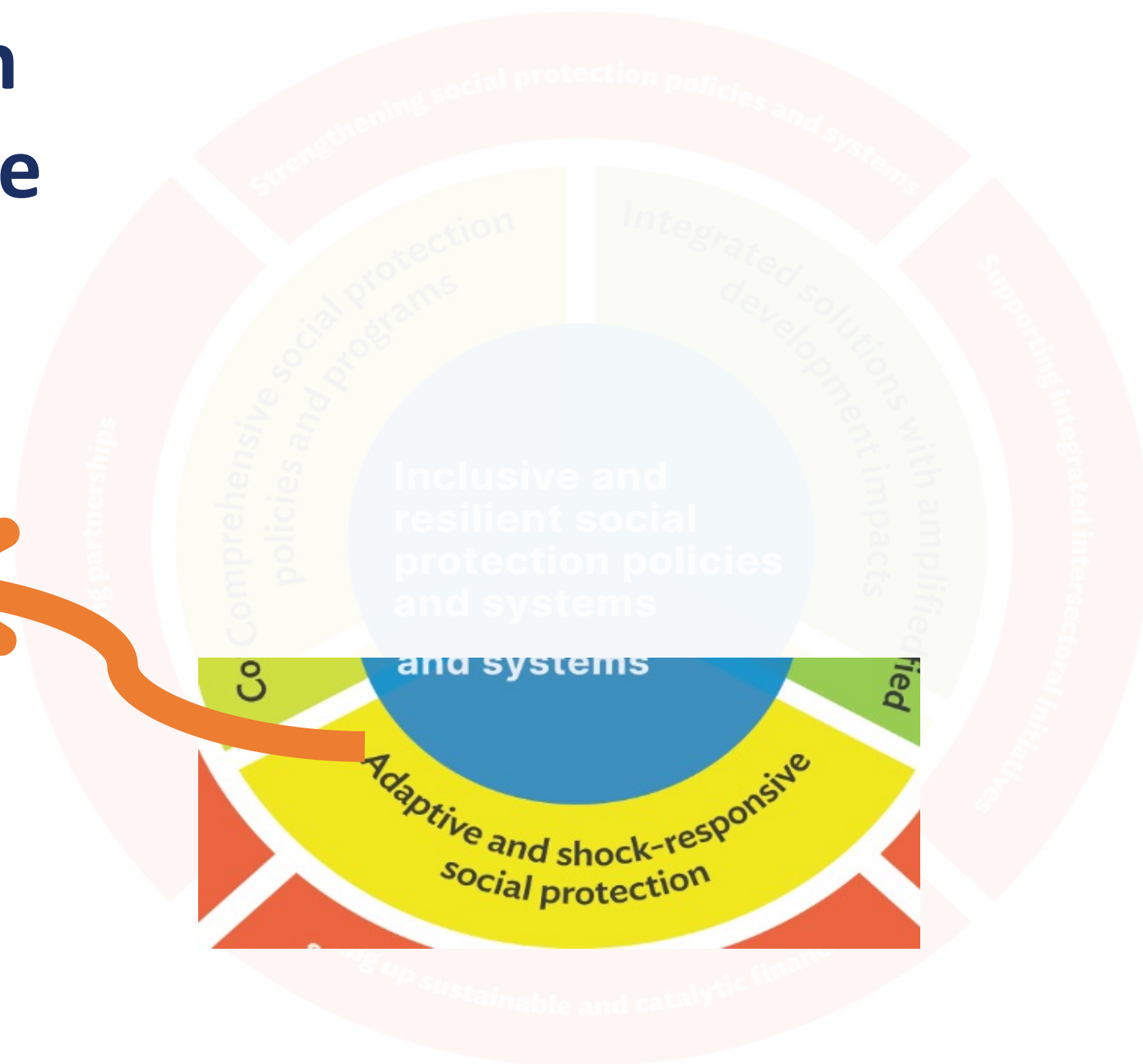




# Social Protection Directional Guide

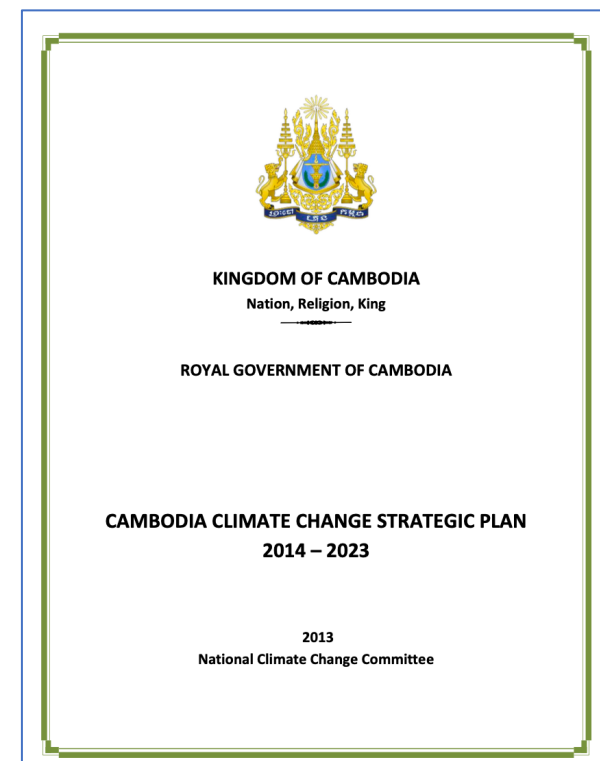
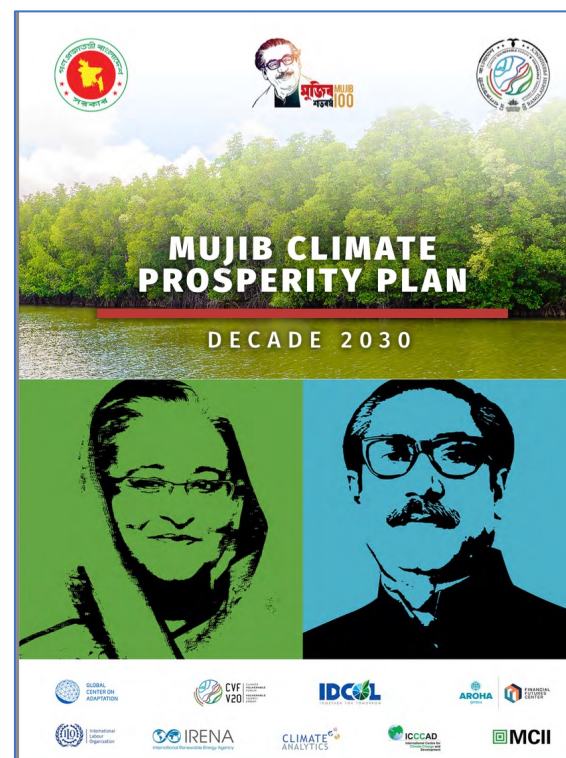
## Adaptive and shock responsive social protection

- Build resilience of households to shocks by investing in their capacity to prepare for, cope with and adapt to shocks
- Develop social protection components of just transition strategies and programs



# Social Protection Related Priorities in National Climate Strategies and Plans

- **Bangladesh:** National Adaptation Plan (2023-2050) and Mujib Climate Prosperity Plan has prioritized social protection as a priority area of investment to deal with climate shocks and stresses.
- **Cambodia:** National Climate Change Strategic plan 2014-2023 has identified adaptive social protection as one of the 8 strategic priorities to build resilience
- **Indonesia:** Developing National Adaptive Social Protection Road Map
- **Nepal:** National Adaptation Plan 2021-2050 has prioritized social protection as one of the six priorities under disaster risk management program.



# Community Resilience Partnership Program



- ☐ knowledge and action research on climate risk-informed pro-poor community-level solutions
- ☐ develop and deliver climate adaptation investments at the community level
- ☐ investments supporting pro-poor community-level adaptation measures.

## CRFPF delivered through partnerships



## Partners that have contributed to the development of the CRFPF

