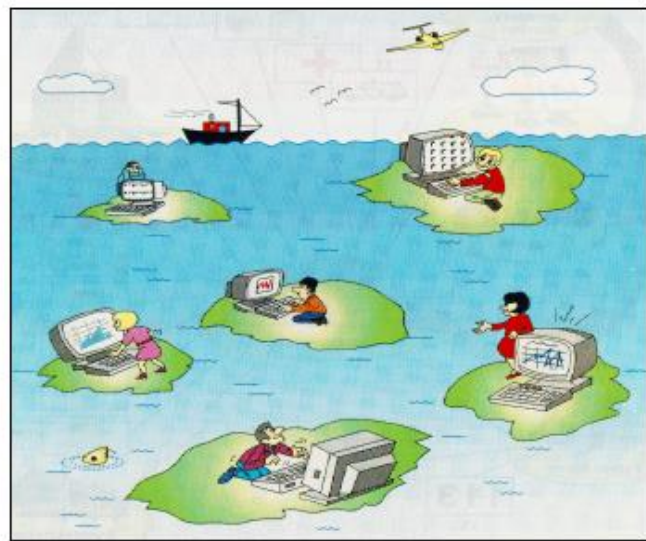


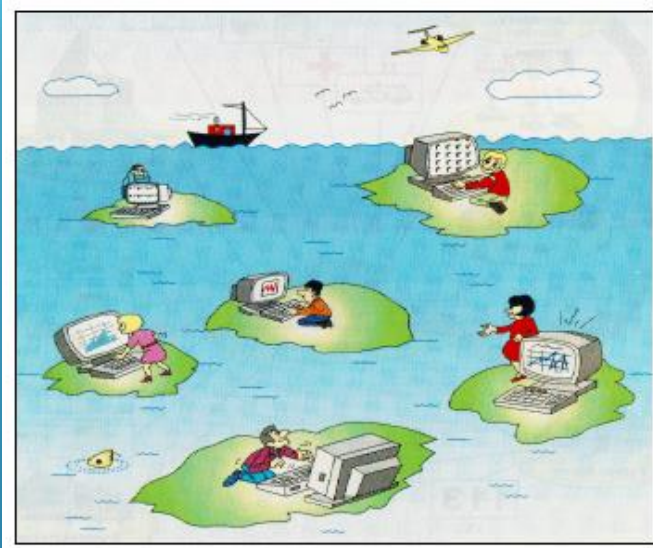
This is not an ADB material. The views expressed in this document are the views of the author/s and/or their organizations and do not necessarily reflect the views or policies of the Asian Development Bank, or its Board of Governors, or the governments they represent. ADB does not guarantee the accuracy and/or completeness of the material's contents, and accepts no responsibility for any direct or indirect consequence of their use or reliance, whether wholly or partially. Please feel free to contact the authors directly should you have queries.



NATIONAL SPATIAL DATA INFRASTRUCTURE IN KYRGYZSTAN

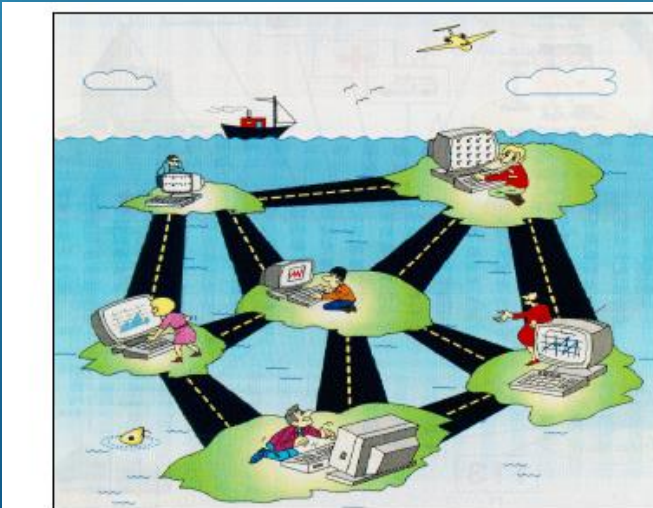
Zhakshylyk Toktosunov
Director of SOE "Cadastre" under the
State Service for Land Resources,
Ministry of Agriculture of the Kyrgyz
Republic





NATIONAL SPATIAL DATA INFRASTRUCTURE IN KYRGYZSTAN

Goal: standards and uniform rules for
the presentation of data, metadata,
services



Status of the spatial data infrastructure in Kyrgyzstan

**Government Decree
Kyrgyz Republic**

- dated February 15, 2019 No. 20-r: "ROAD MAP" for the implementation of the Digital Transformation Concept "Digital Kyrgyzstan 2019-2023"
- Item 16 - Phased establishment of the National Spatial Data Infrastructure:
 - 16.1. Create a geo-information portal of the Kyrgyz Republic;
 - 16.2. Create a cartographic base and a system of geodetic support;
 - 16.3. Apply Geospatial Data for Statistical Purposes:
 - statistical register;
 - population and housing census;
 - statistical maps;
 - dissemination of statistical information



STATUS OF THE SPATIAL DATA INFRASTRUCTURE IN KYRGYZSTAN

- ▶ From 01.2018 : Ongoing Kyrgyz-Norwegian project , within whom produced aerial photography for 23,000 km² .
- ▶ Training linear kart for Bishkek , 160 km².
- ▶ Geoportal for providing access to ortho-photo maps for state and other bodies .

GEOPORTAL



- ❑ collection of existing maps to support statistics across the country.
- ❑ development of principles, standards and procedures for data exchange between relevant data holders in Kyrgyzstan.
- ❑ Internet portal (geoportal) for data dissemination.
- ❑ photomaps and line charts will support the preparation and publication of statistical data.
- ❑ aerial photography results will be used as a base map in the Geoportal.

BASE LAYERS OF THE GEOPORTAL



Group 1. Coordinate/geodesic basis;

Group 2. Georeferenced images of the area;

Group 3. Vector layers of the used digital coverage;

Group 4. Identification information;

Group 5. Administrative boundaries;

Group 6. Cadastral information;

Group 7. Land cover;

BASIC PRINCIPLES FOR CREATING OF NSDI

- Maximum use of spatial data already created in the Kyrgyz Republic;
- Availability of information resources containing basic spatial data;
- Mandatory use and provision of already created basic spatial data when carrying out work to update them;
- Establishment of uniform conditions and tariffs for the provision of spatial data.

Spatial data for NSDI

Basic layers of the Geoportal

- Digital terrain models;
- Primary and orthorectified data from aerial and space surveys;
- Unified address system;
- Administrative boundaries;
- cadastral information;

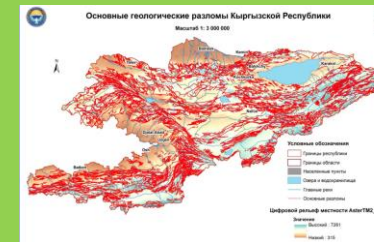
Thematic layers

- ✓ Water resources data
- ✓ Geological data;
- ✓ Data of natural disasters (MES)
- ✓ Forest resources data
- ✓ Statistic data
- ✓ Etc.

Cadastral data



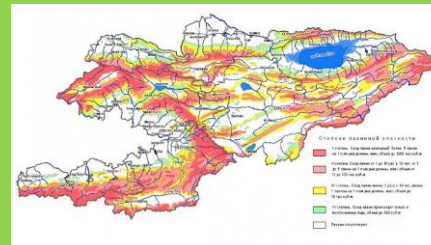
Geological data



Water resources data



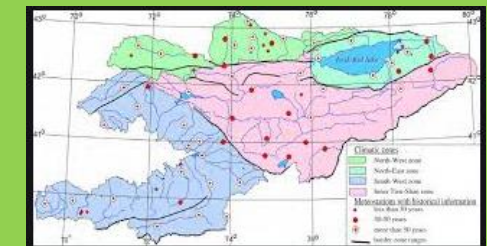
Data of natural disasters (MES)



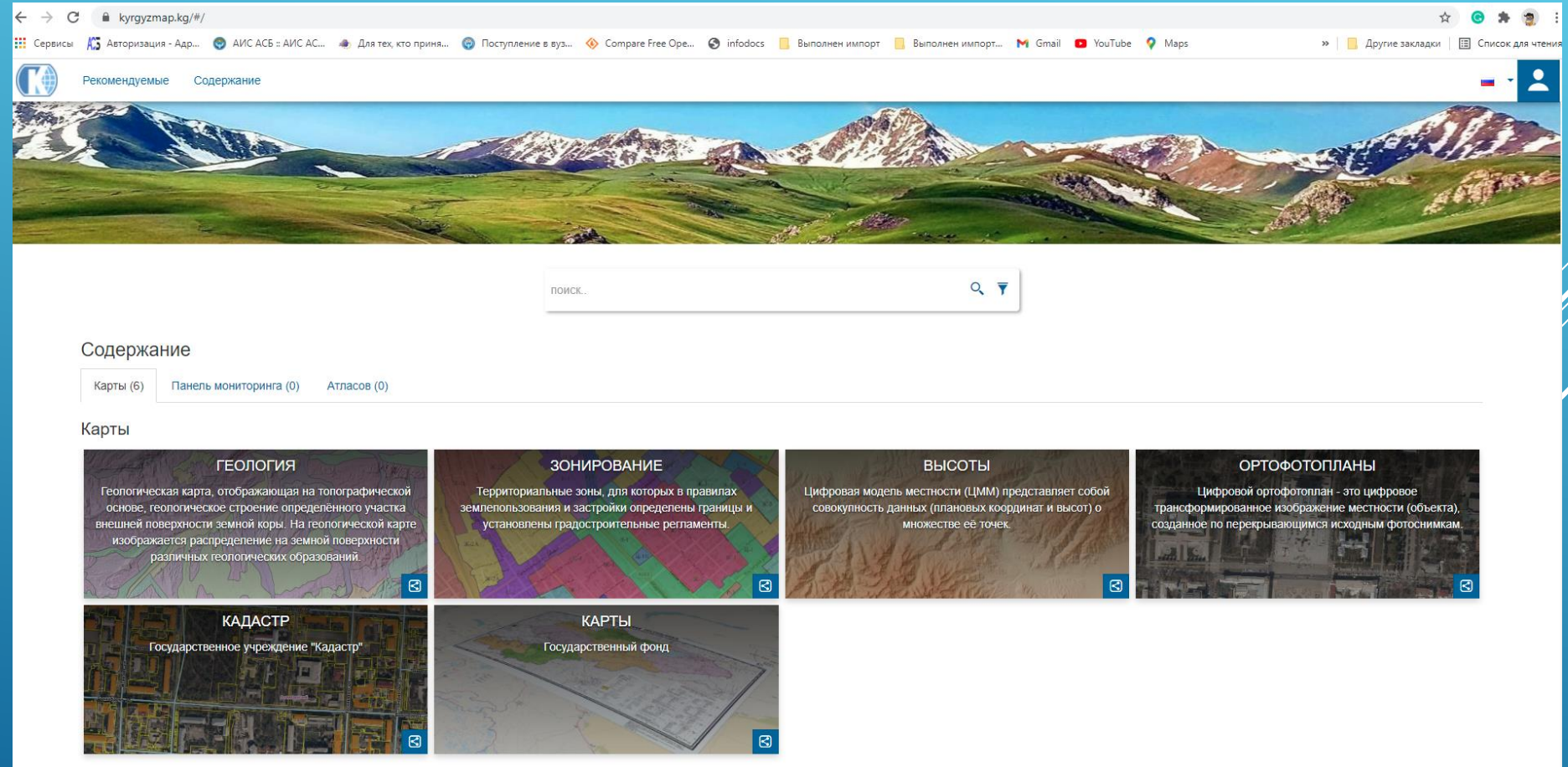
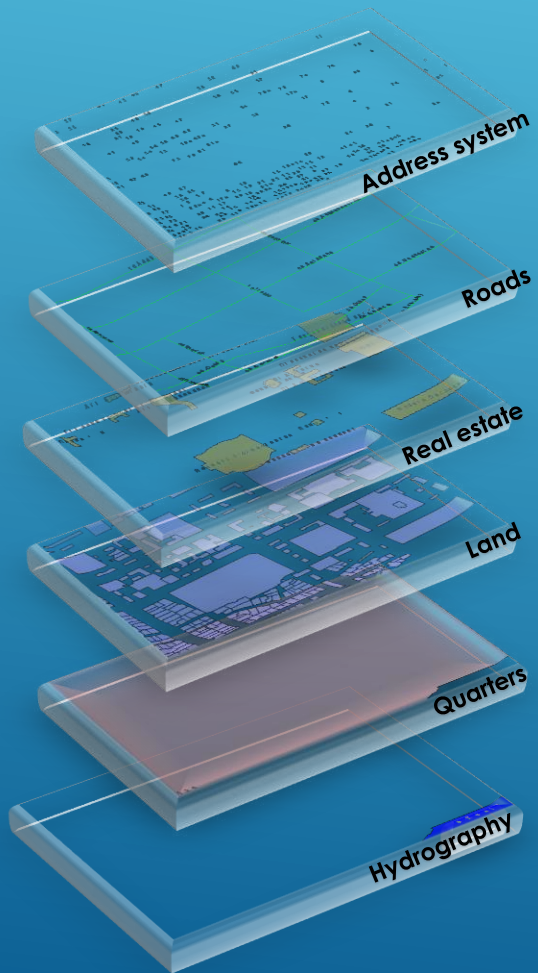
Forest resources data



Static data



Geoportal with base layers



<https://kyrgyzmap.kg/>

Land use map

Land inventory



Compiled on the basis of aerial photographs and satellite images



Types of land

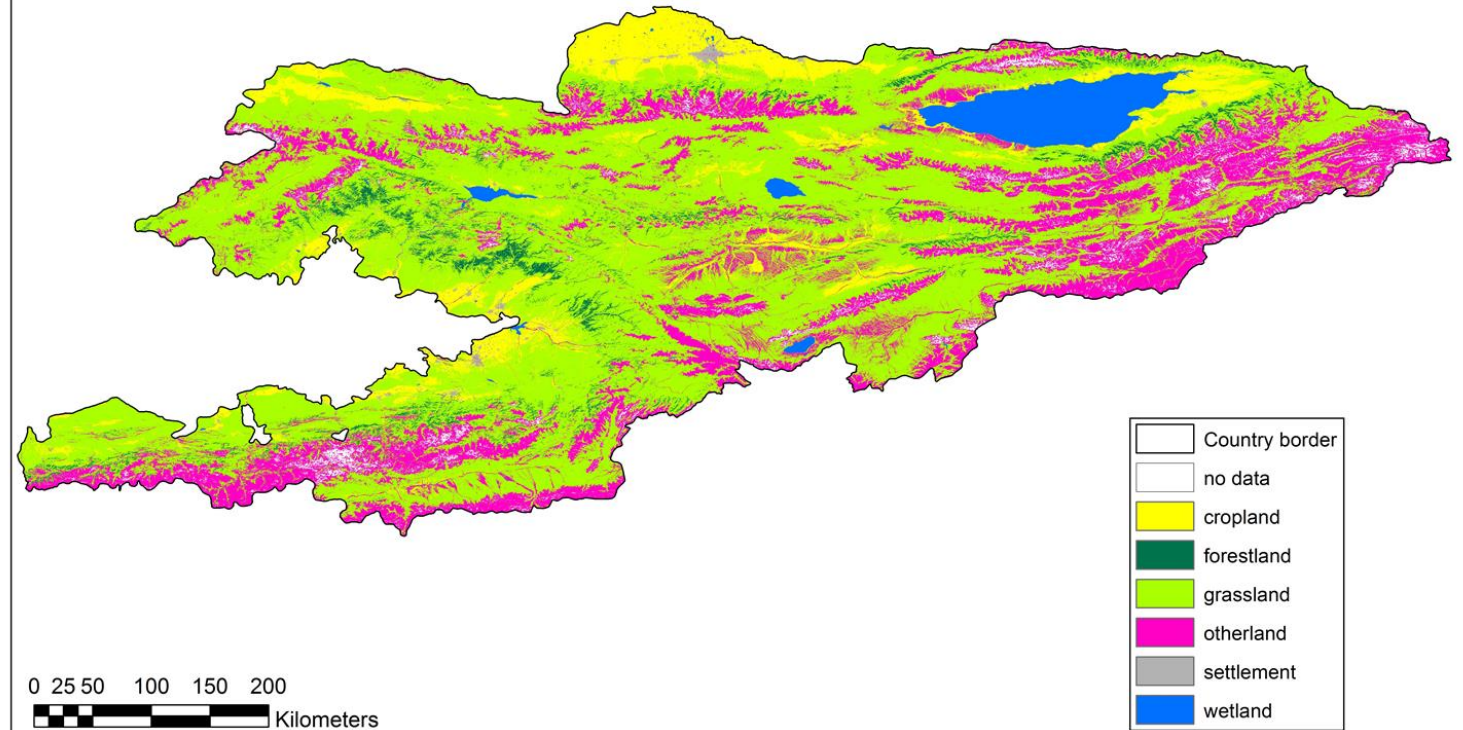


Cartographic information

 squares

 Borders

Land cover map

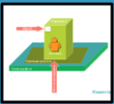


Address register

Darek.kg



Developed on the basis
SOATE



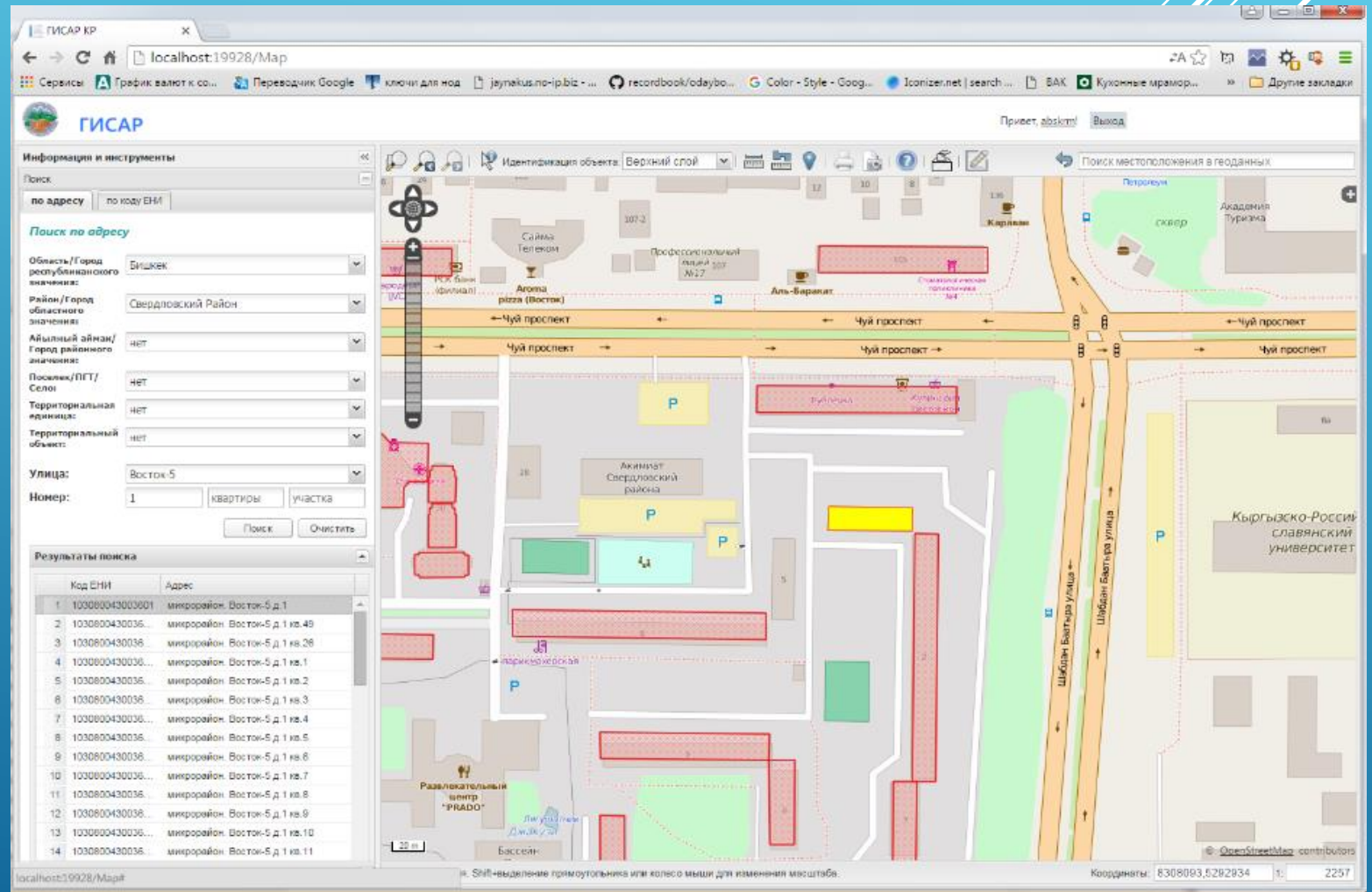
More than 30 thousand streets



Over 3 million objects
real estate

☐ Search by address

☐ Search by code

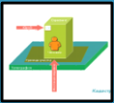


Database of the Ministry of emergency situations

mes.kg



Developed on the basis
geonod



More than 5 thousand data

18/02/19/lavinoopasnye-uchastki-na-avtodorogax-kr/

22.1 ° Бишкек Четверг, 30 сентября, 2021 Регистрация / Авторизация [KY] [EN] Старая версия сайта

МИНИСТЕРСТВО ЧРЕЗВЫЧАЙНЫХ СИТУАЦИЙ КЫРГЫЗСКОЙ РЕСПУБЛИКИ

НОВОСТИ СВОДКА АНТИКОРРУПЦИЯ ГОС.ЗАКУПКИ НОРМАТИВНО-ПРАВОВАЯ БАЗА О НАС СИСТЕМА 112

УПРАВЛЕНИЕ ЧЕЛОВЕЧЕСКИМИ РЕСУРСАМИ УФБУ ДЕЯТЕЛЬНОСТЬ МЧС КР ПО ОСНОВНЫМ СТРАТЕГИЧЕСКИМ ПЛАНАМ ОРП МЧС КР

РАДИАЦИОННАЯ БЕЗОПАСНОСТЬ МЕЖДУНАРОДНОЕ СОТРУДНИЧЕСТВО ЕЩЕ ▾ СТАТИСТИКА ▾ ГЛОССАРИЙ ▾

Домой > Еще > Лавиноопасные участки на автодорогах КР > Лавиноопасные участки на автодорогах КР

Лавиноопасные участки на автодорогах КР

19.02.2018 1 802 просмотров 0

1. Автодорога Бишкек – Ош -246 км лавиносбор №14 (уч. Кечку-Булак)

ПОСЛЕДНИЕ ЗАПИСИ

- Иссык-Куль: В селе Барскоон произошел пожар 30.09.2021
- Иссык-Куль: Профилактические меры пожарной безопасности 30.09.2021
- Джалал-Абад: Пожар в жилом доме 30.09.2021

АРХИВ

Февраль 2018

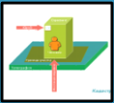
Показать все

Database of the State Agency for Forest Resources

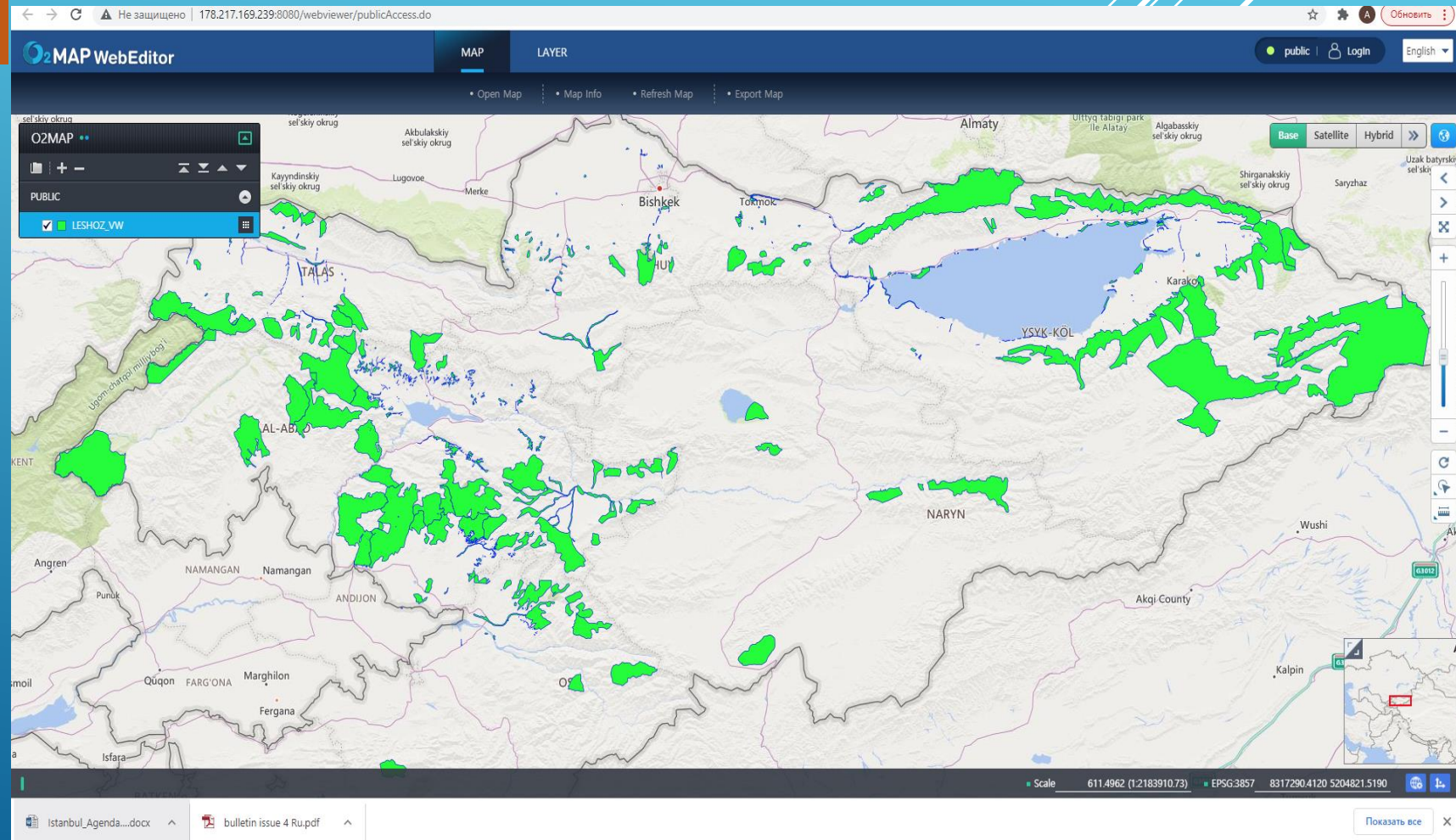
Forestry.caia.gov.kg



Developed on the basis
geonod



Over 30k data

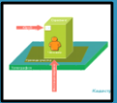


Database of the State Agency for Water Resources

gis.water.gov.kg



Developed on the basis
ArcGIS server



Over 80k data

gis.water.gov.kg/portal/home/index.html

На главную Галерея Карта Сцена Группы Войти

Геоинформационный портал о воде Кыргызской Республики

Департамент водного хозяйства
и мелирации Кыргызской Республики

Проект управления национальными
водными ресурсами-1

Featured Maps and Apps

DEM_KR

Административная

Бассейновые_управления

Геологические_формации

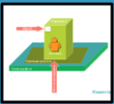
Показать все

Open Data Cube (Sibelius Project)

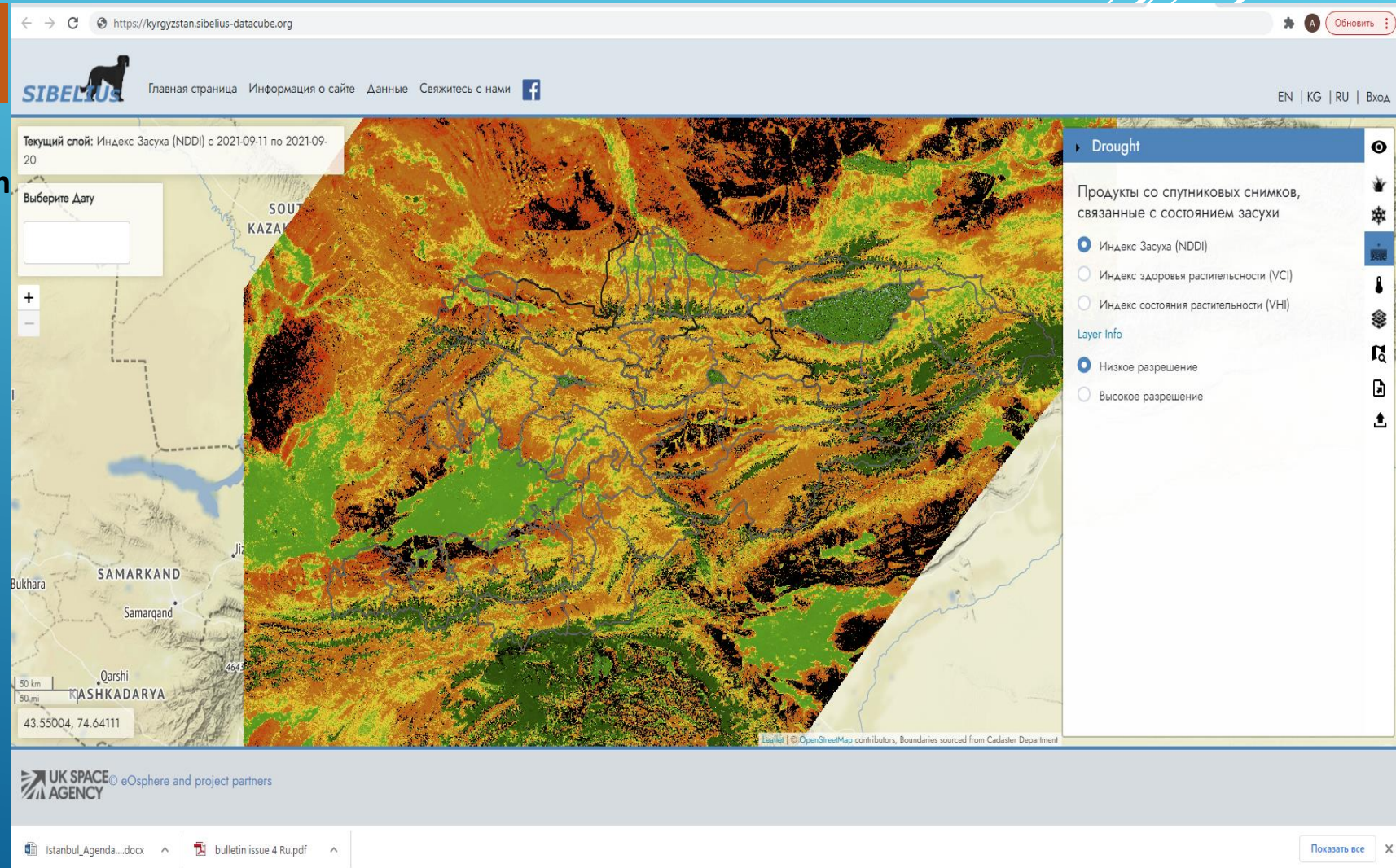
kyrgyzstan.sibelius-
datacube.org



Designed In the project's bound
Sibelius



satellite imagery from
open sources



► Thank you!