

Background

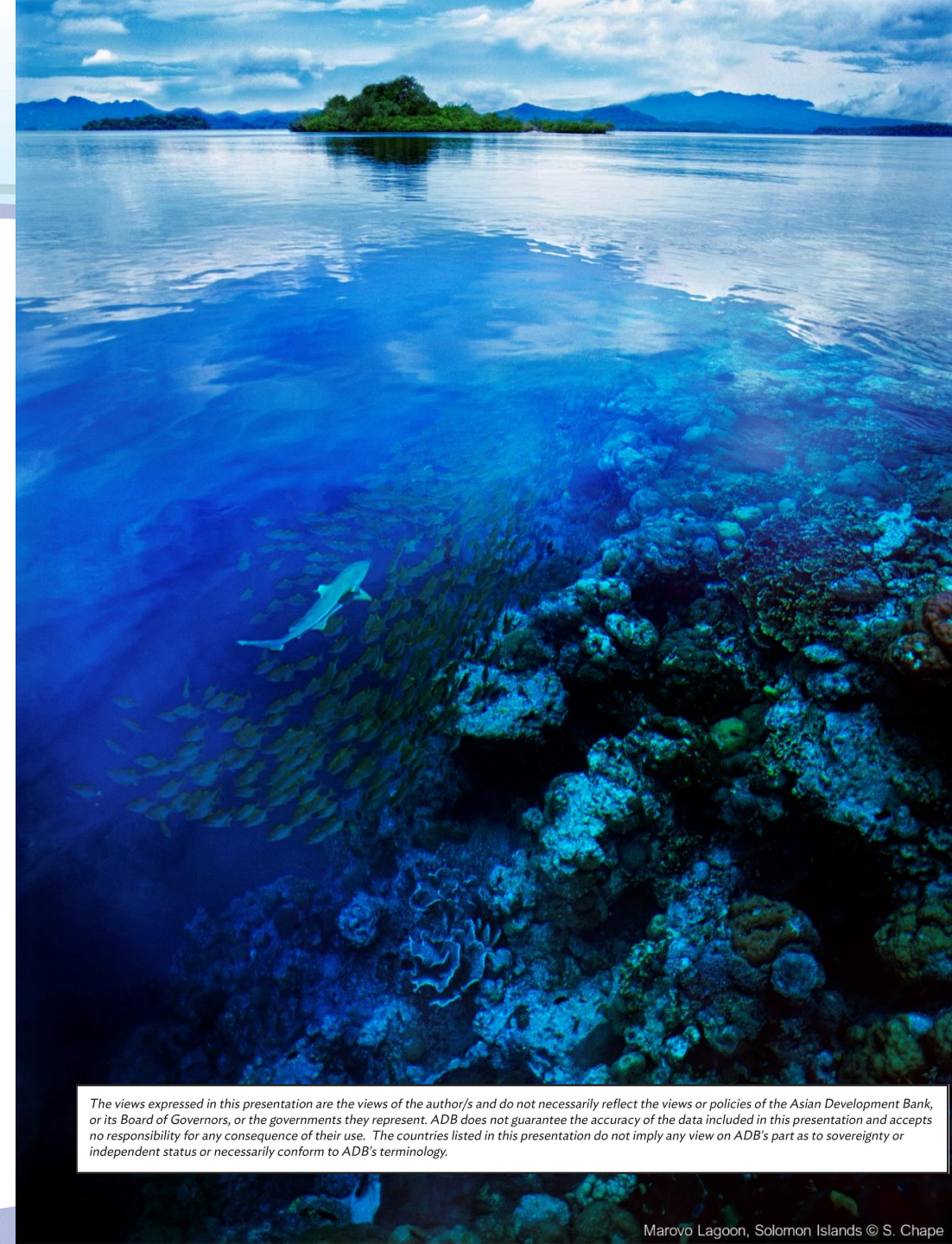
The 3rd UN SIDS Conference:

- **Identified need for:**

- Monitoring Ocean Acidification
- Building capacity & resilience
- Implementing adaptation strategies



UN Conference on
Small Island
Developing States
Apia, Samoa | 2014



Pacific Partnership on Ocean Acidification

- Collaborative effort between:



SPC
Secretariat
of the Pacific
Community

- Financial support from:

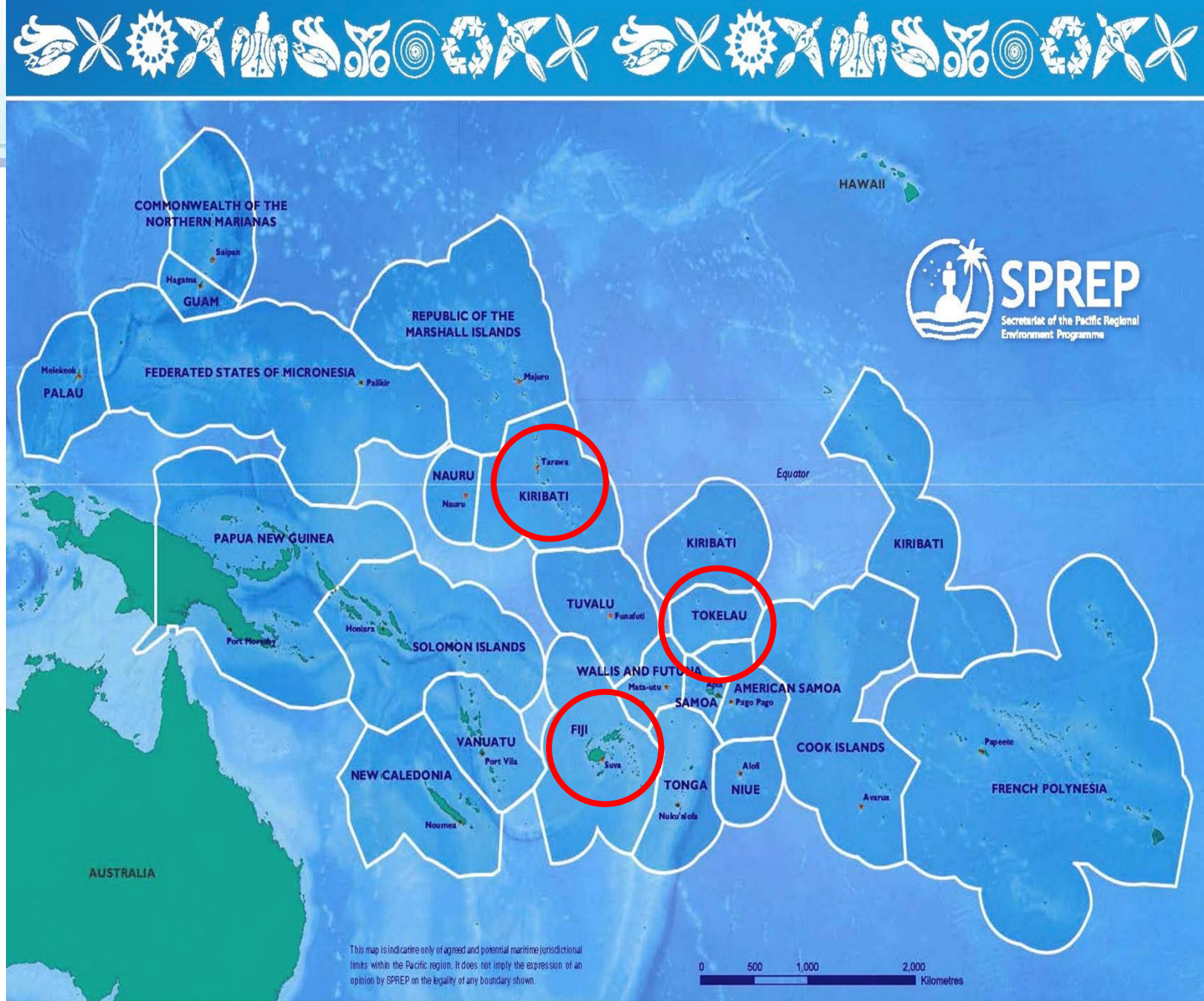


Design

Focus Areas:

1. Research and Monitoring
2. Capacity Building
3. Adaptation Actions
4. Policy Support

Pilot Sites: Fiji, Kiribati, Tokelau

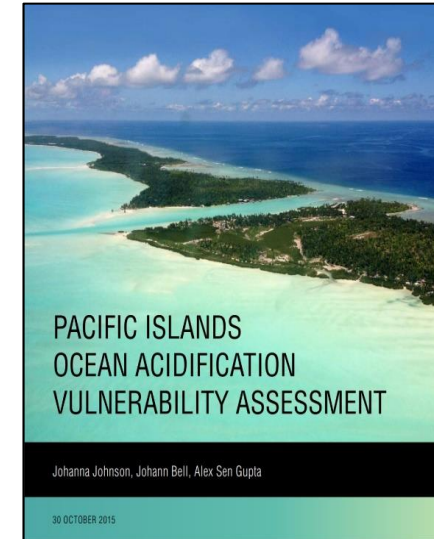


Regional OA Vulnerability Assessment:

- <http://www.sprep.org/attachments/Publications/CC/ocean-acidification.pdf>

Vulnerability Assessment of Pelagic Fisheries

- <https://www.wcpfc.int/node/29559>



PhD Scholarship with



- Student from PNG researching coral restoration & coral resilience to OA



Building capacity of Pacific Islanders to monitor and report **ocean acidification** data

Partnered with TOF to provide equipment & training to 8 Pacific island nations to monitor OA & report data to **SDG Indicator 14.3.1:**

*Average **marine acidity (pH)** measured at agreed suite of representative sampling stations*



Pacific Island Countries Ocean Acidification Observation and Response Network

KIOST + SPREP
establishing OA monitoring
(MAPCO₂) buoys in:

- Palau
- FSM (Chuuk)
- Samoa



KAKANGIN TAARI!

UNHEALTHY CO₂ HEALTHY

4 ANGA N TOTOKOA TI KANGANGA

[illegible]

Gouvernement Princier
PRINCIPAUTÉ DE MONACO

**NA CAVA O RAWA
NI CAKAVA ENA
GAUNA QO?**

- [illegible]

Gouvernement Princier



Stakeholder consultations to plan adaptation actions

Taveuni, Fiji



Nanikai, Kiribati



Tokelau



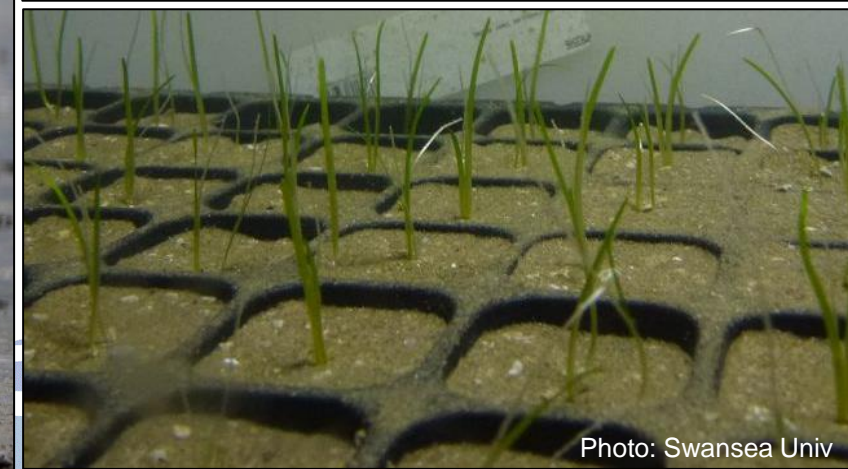
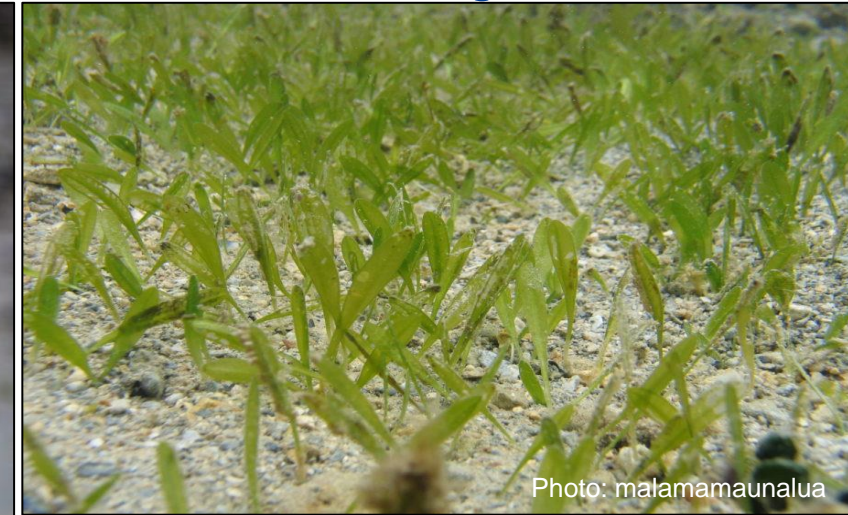
Adaptation Options

Enhancing Primary Producers to Locally Buffer pH

Mangroves



Seagrass



Adaptation Options

Coral Restoration to Enhance Reef Resilience

In situ Nursery



Ex situ Culture



Reducing Reef Stressors: Locally Managed Marine Areas (LMMA)

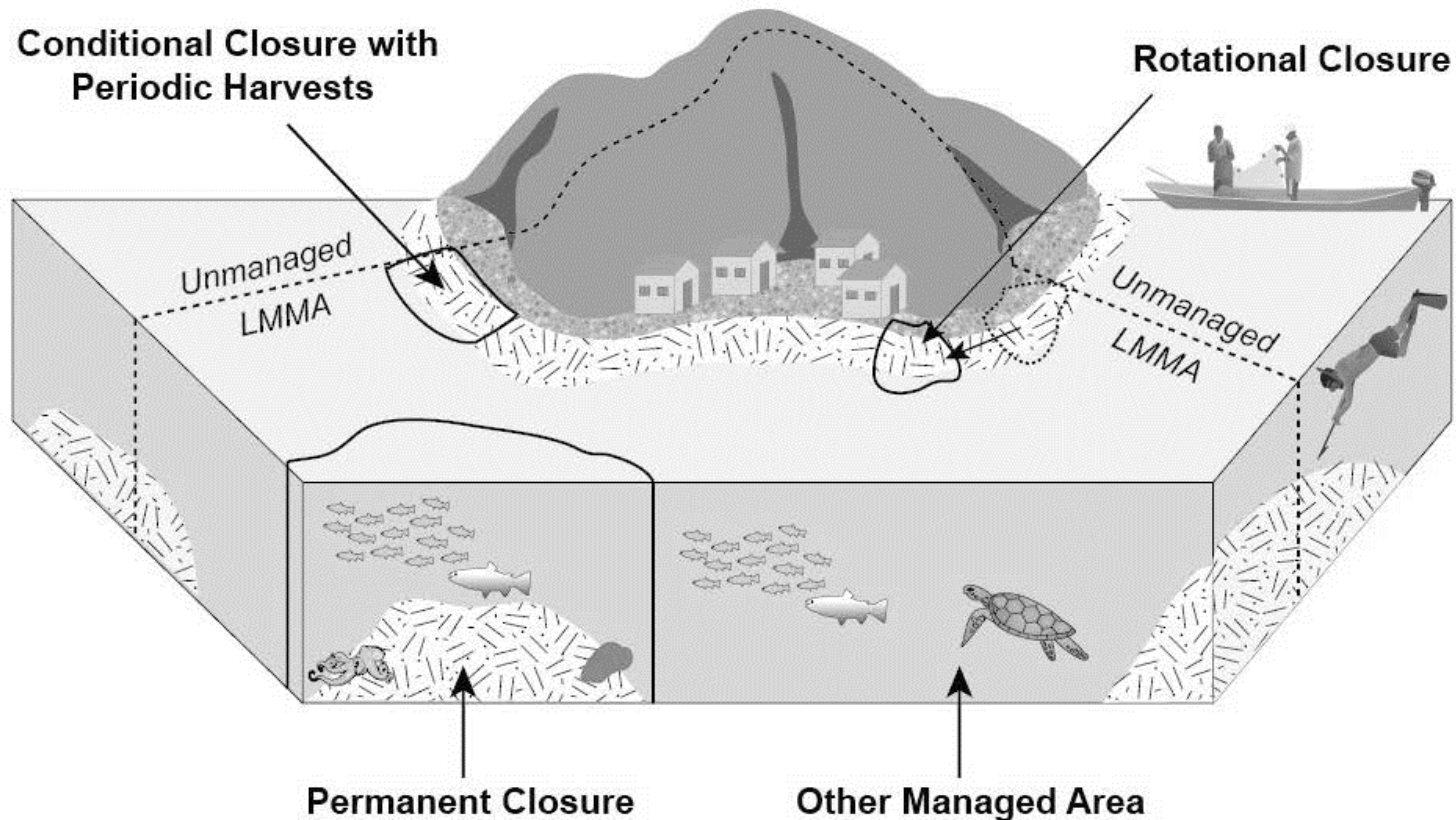
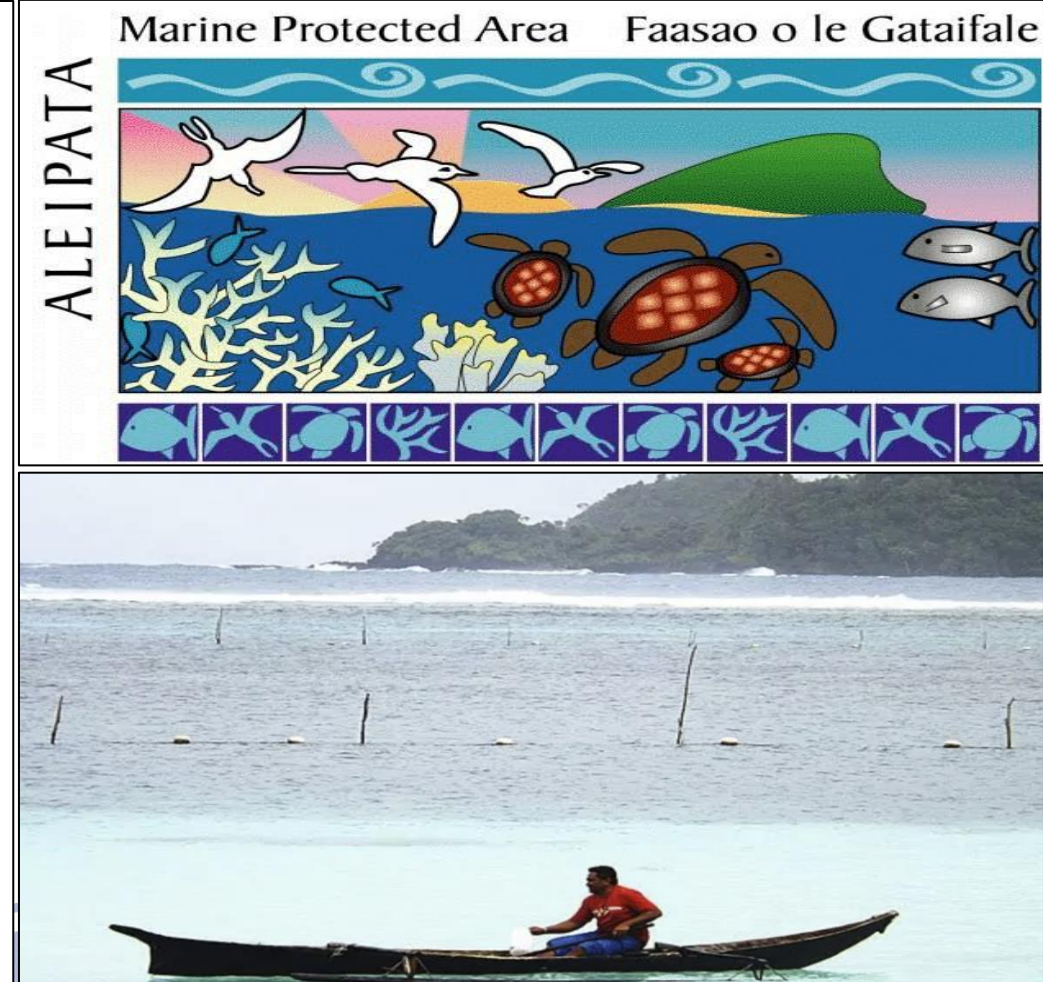


Fig: Jupiter et al 2014



Adaptation Options

Reducing Reef Fishing Pressure: Alternative Livelihood: Aquaculture



Photo: World Fish



Photo: www.farmingmethod.com



Photo: World Fish



Photo: www.farmingmethod.com



Photo: World Fish



Photo: World Fish

Stakeholder-Determined Priorities:

- Mangrove Restoration
- LMMA Development
- Alternative Livelihood

Partners:



Adaptation: Tokelau

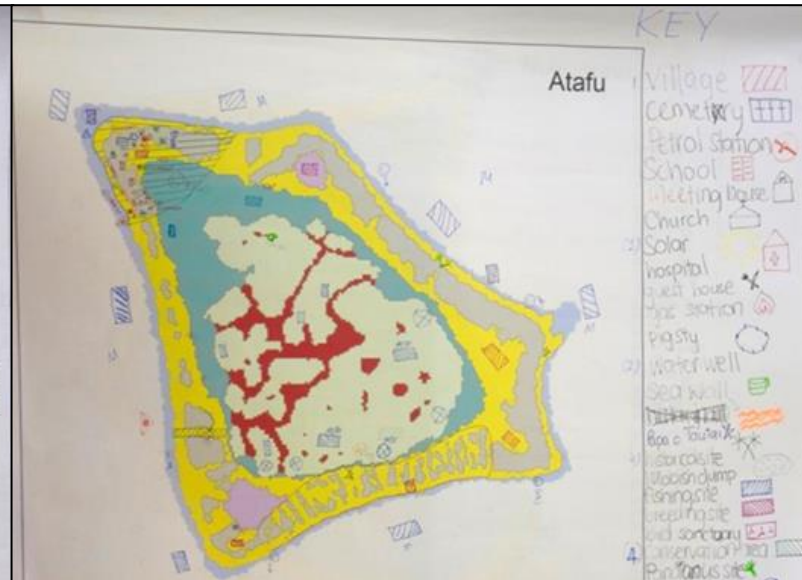
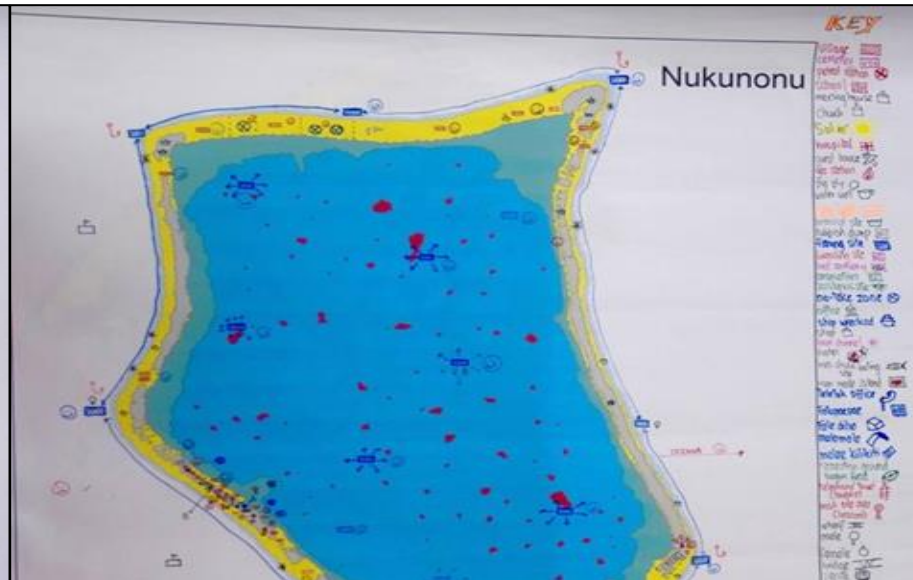
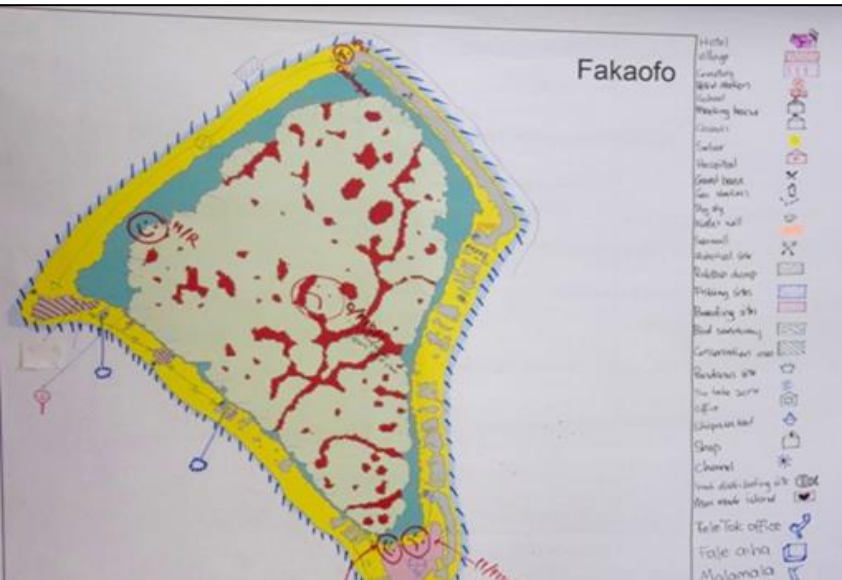


Coral Restoration

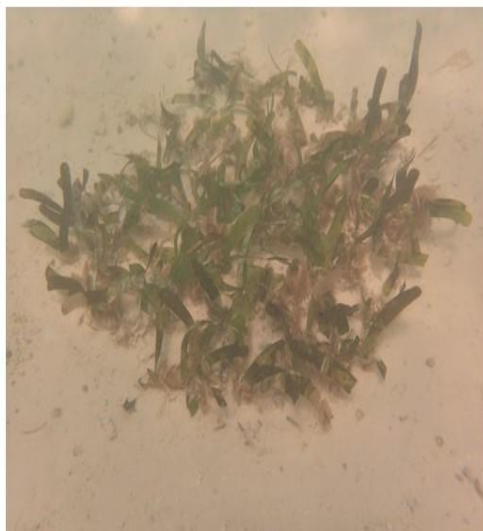
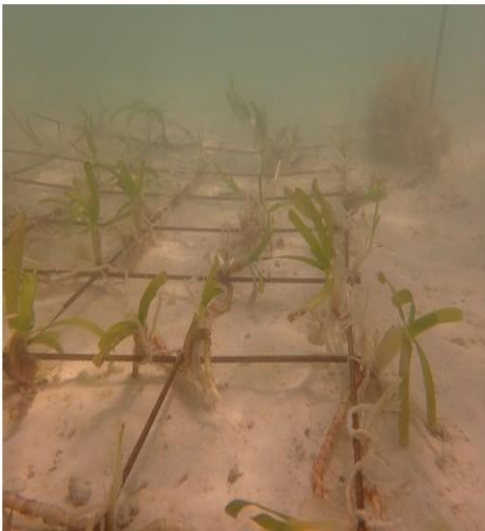
Fakaofu

Nukunonu

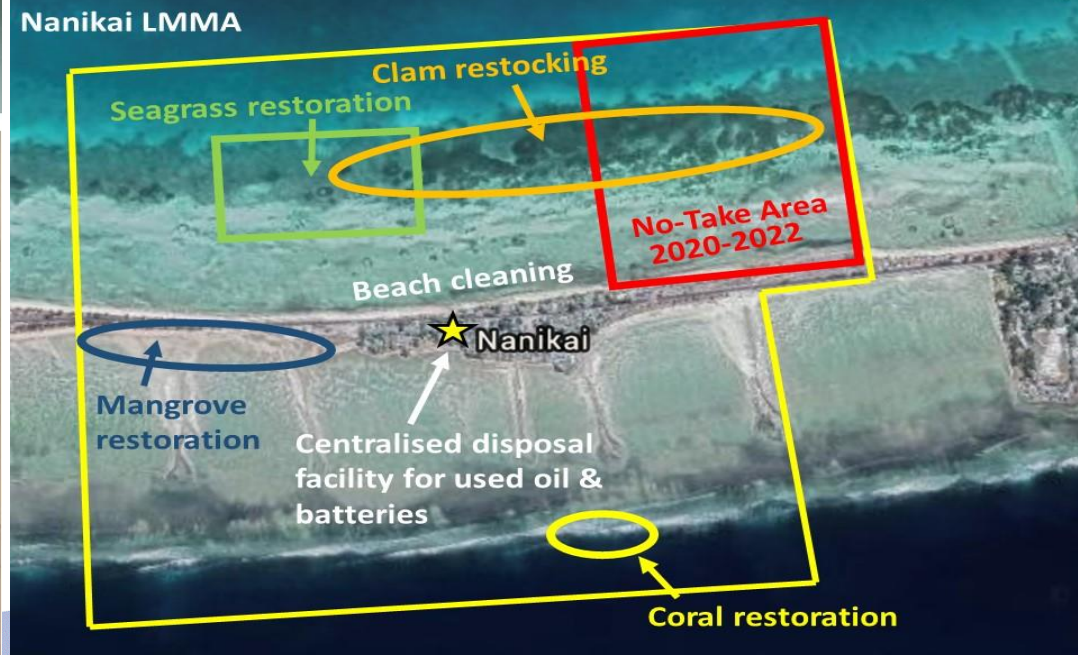
Atafu



Seagrass Restoration



LMMA Development



Mainstreaming Ocean Acidification into National Policies: A Handbook for Pacific Islands

Download (pdf):

<https://www.sprep.org/publications/mainstreaming-ocean-acidification-into-national-policies-a-handbook-for-pacific-islands>

MAINSTREAMING OCEAN ACIDIFICATION INTO NATIONAL POLICIES A HANDBOOK FOR PACIFIC ISLANDS