

This is not an ADB material. The views expressed in this document are the views of the author/s and/or their organizations and do not necessarily reflect the views or policies of the Asian Development Bank, or its Board of Governors, or the governments they represent. ADB does not guarantee the accuracy and/or completeness of the material's contents, and accepts no responsibility for any direct or indirect consequence of their use or reliance, whether wholly or partially. Please feel free to contact the authors directly should you have queries.

Decision-Support for Improving Wildlife Connectivity and Transportation

Fraser Shilling, Director
Road Ecology Center
University of California, Davis
<https://roadecology.ucdavis.edu>

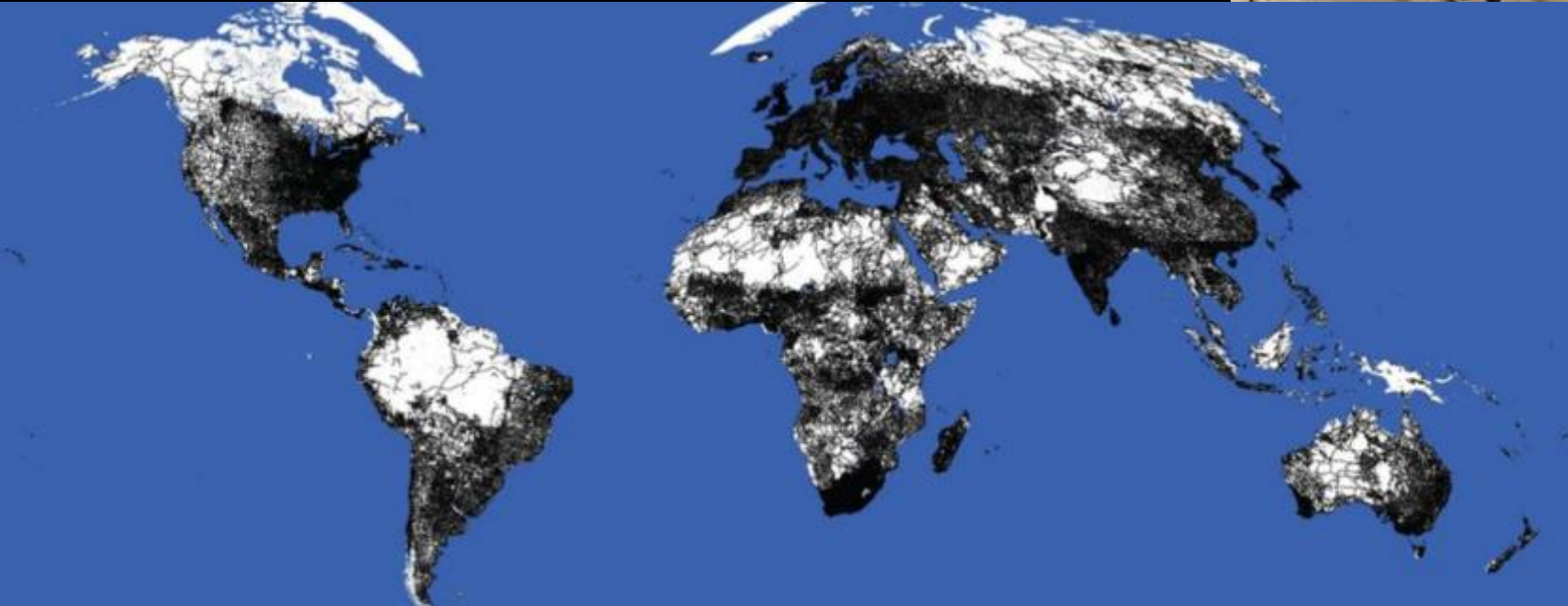
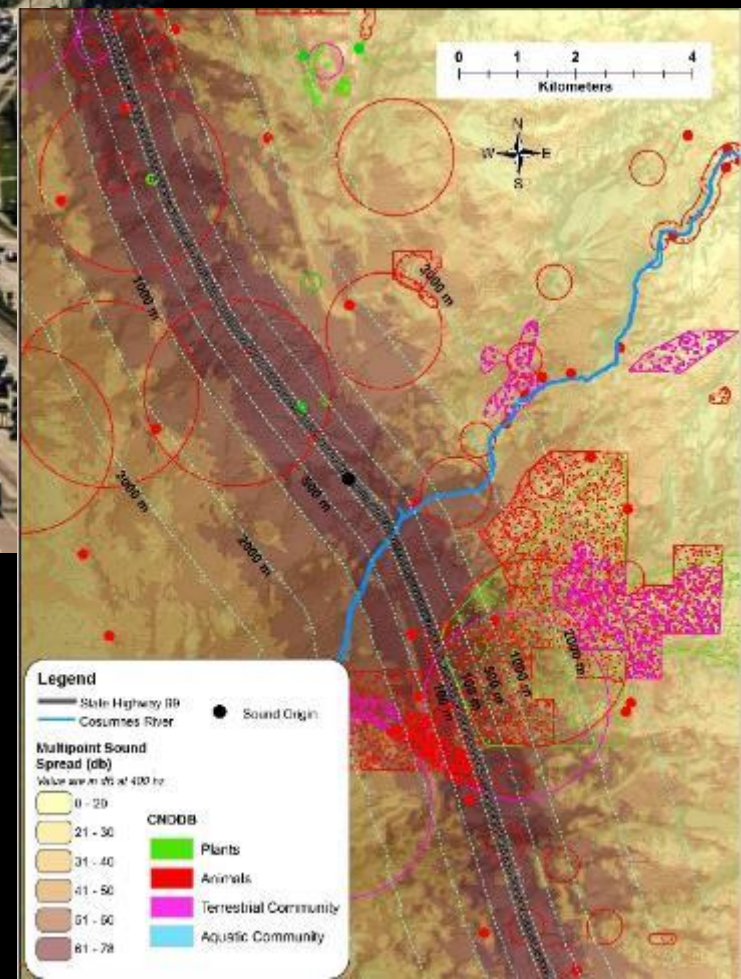
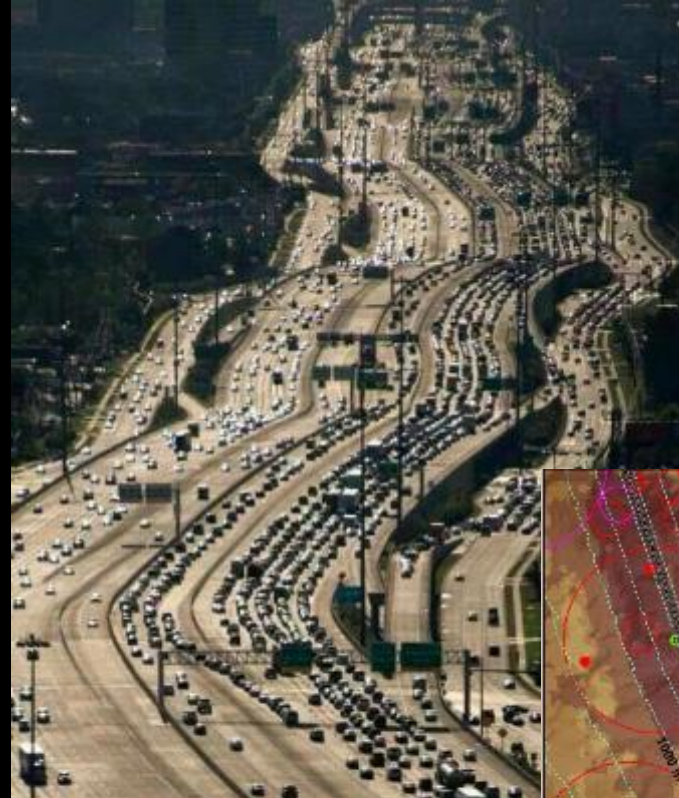


Ecological Considerations in Planning and Mitigation Measures and Capacity Building Needs for Effective Conservation Alongside Linear Infrastructure

Acknowledgements

- Autumn Iverson, Dave Waetjen, Graham Porter, Cameron Denney, Sean McDowell
- National Center for Sustainable Transportation, Pew Charitable Trust, Caltrans, US Department of Transportation
- Brock Ortega (Dudek), Norris Dodd (Aztec), Andrew Runk (Contech Engineering)
- Winston Vickers (UC Davis), Clark Stevens (SMMRCD)

What is the Problem?



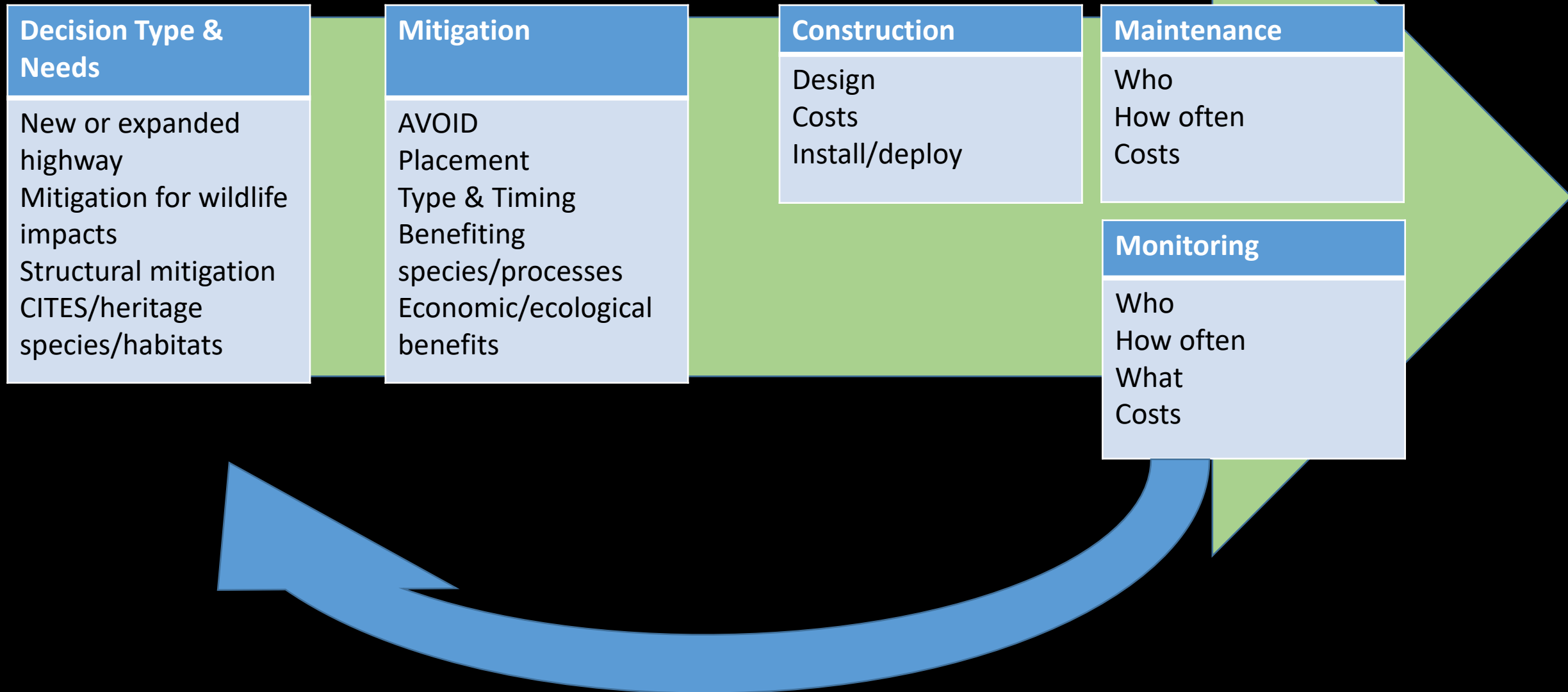
What is the Problem?



Information Needed

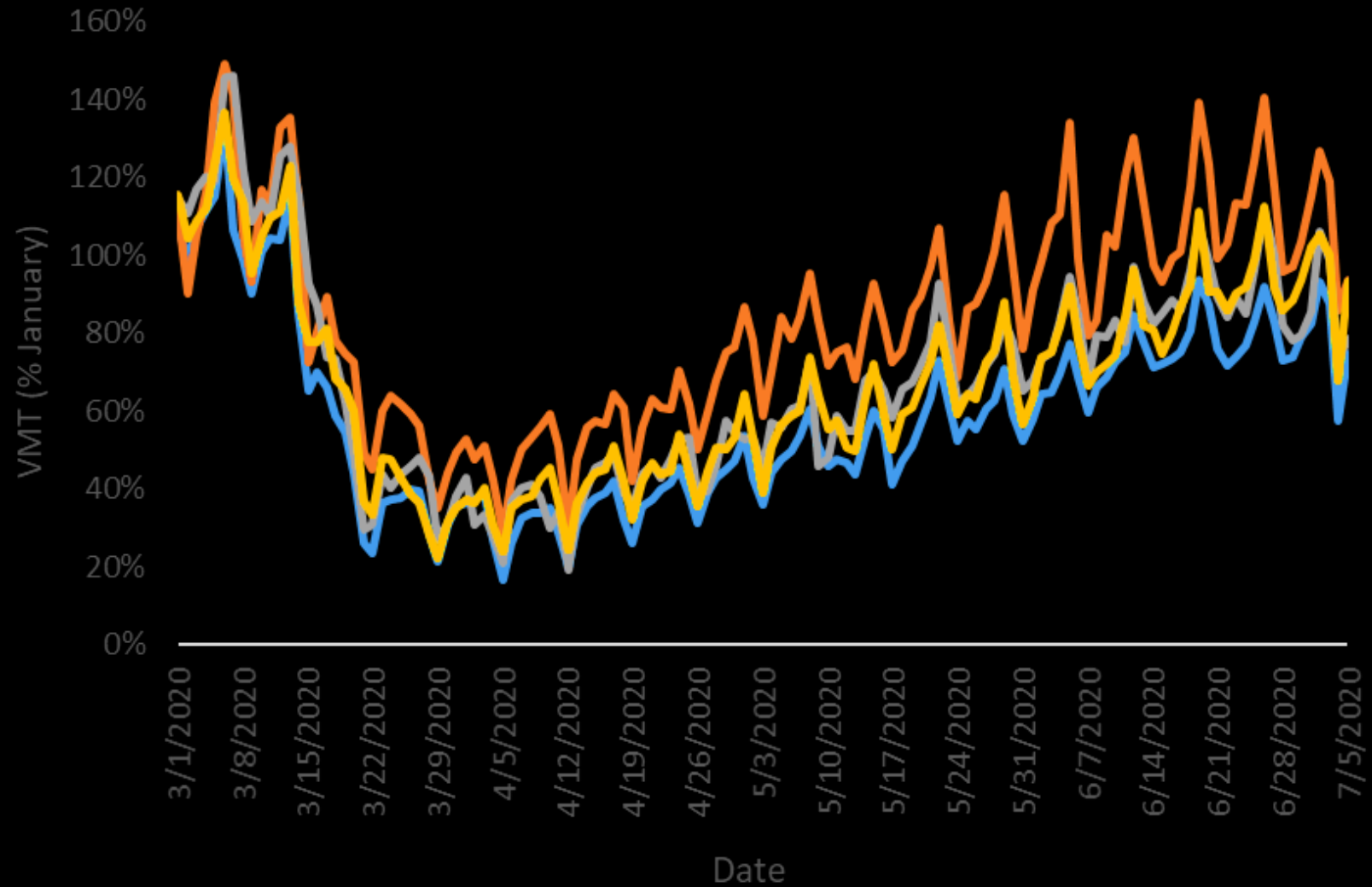
- Traffic (volume, vehicle types, timing)
- Road/rail geometry (width, surface, height relative to land)
- Land morphology (elevation, slope, aspect)
- Land cover (vegetation type, density, height)
- Wildlife species present
- Wildlife mortality on road/rail
- Wildlife movement in vicinity
- Wildlife connectivity

Decision/Analytical Workflow



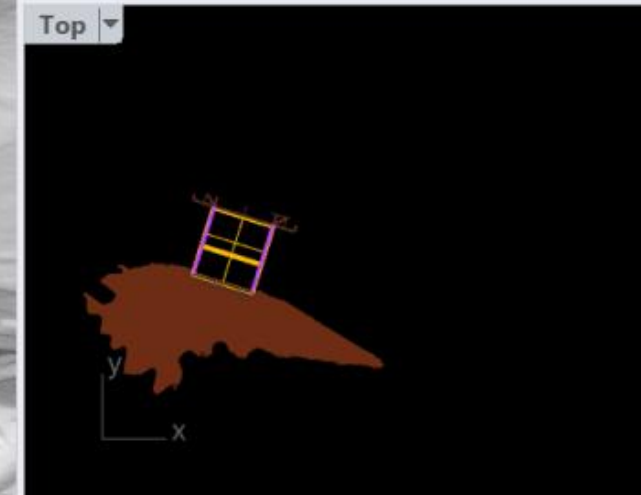
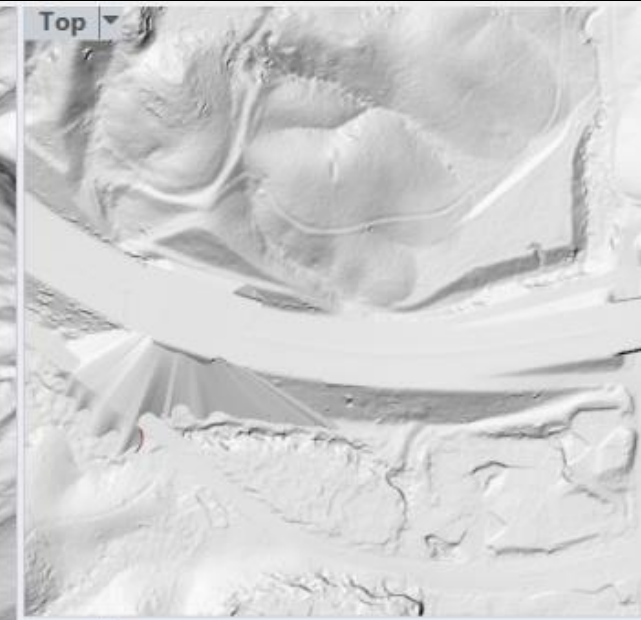
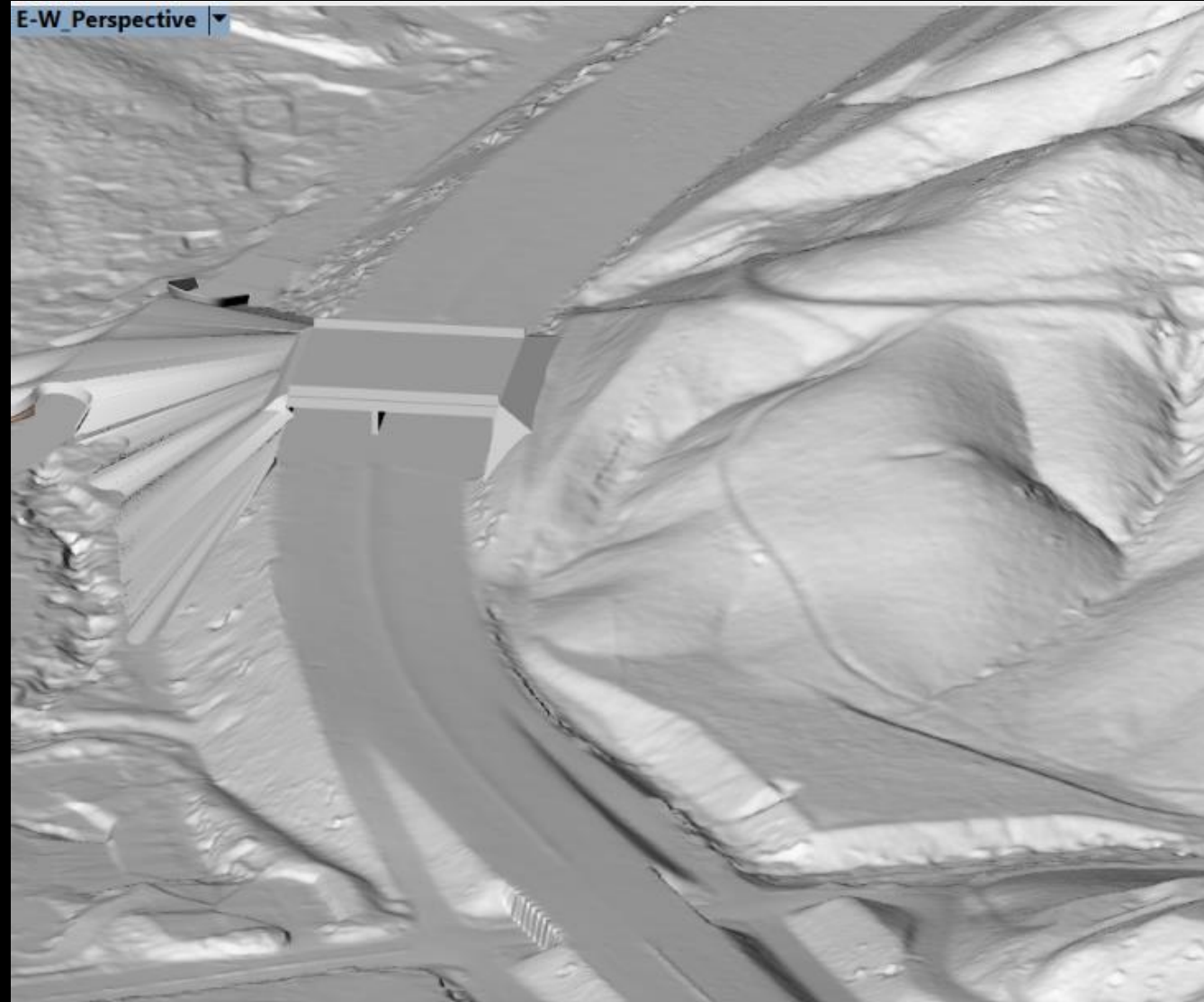
Traffic

- Volumes (AADT, VMT)
- Timing
- Fleet (cars, trucks)



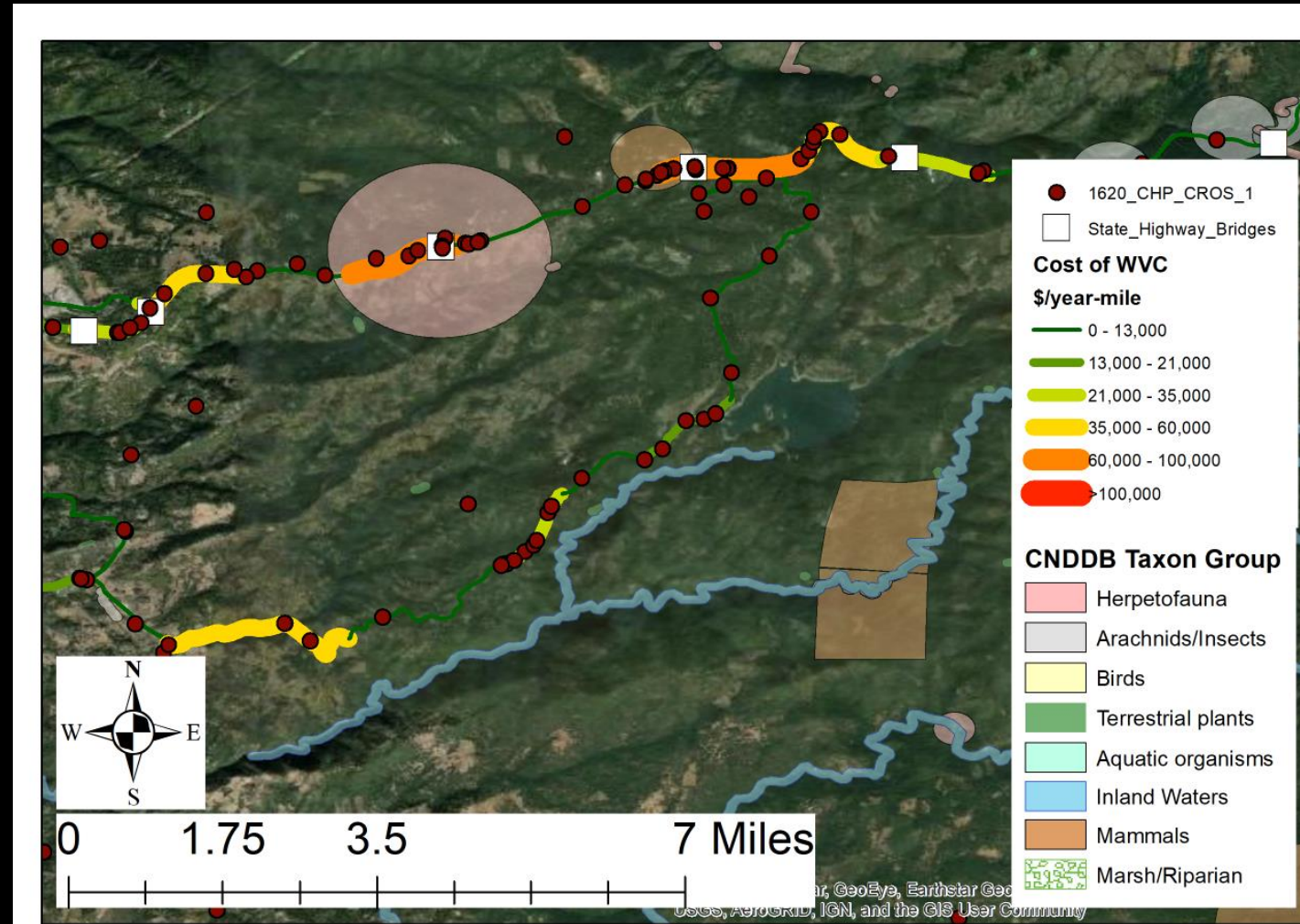
Geomorphology

- Slope
- Elevation
- Aspect
- Shape
- Design



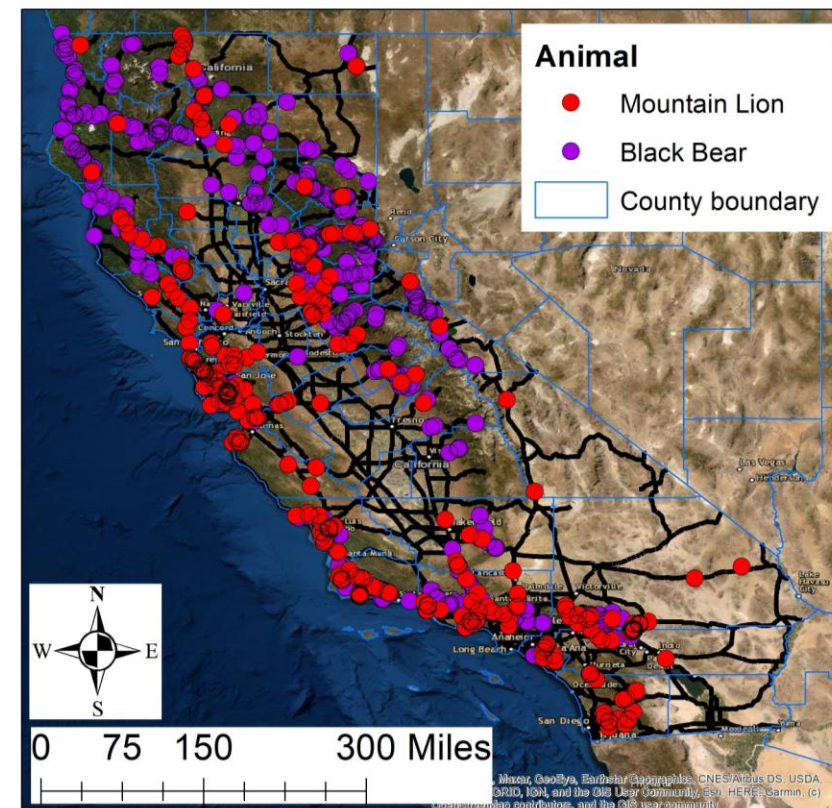
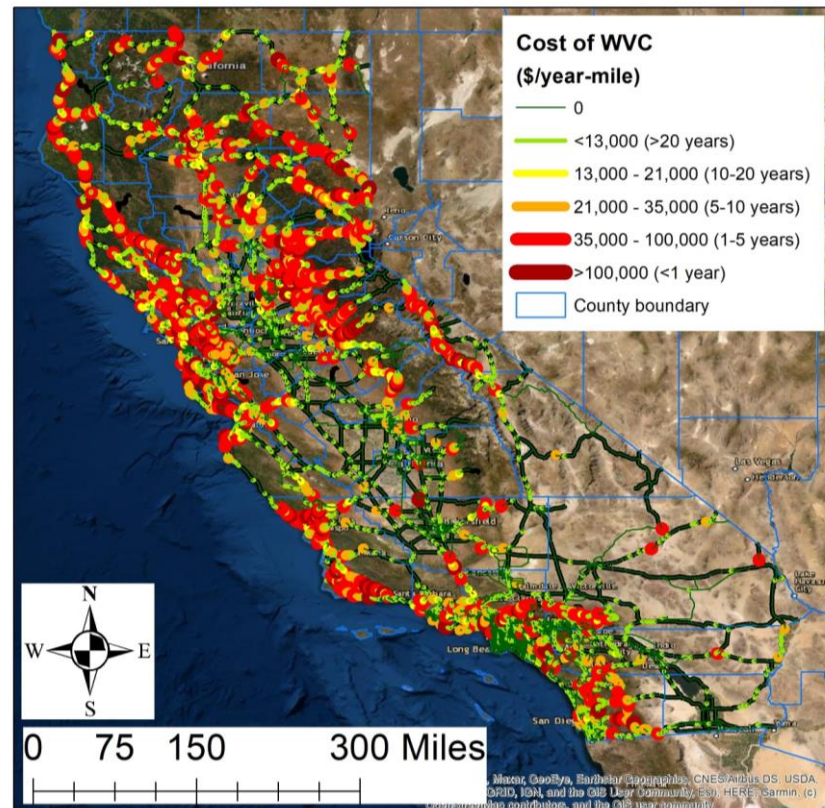
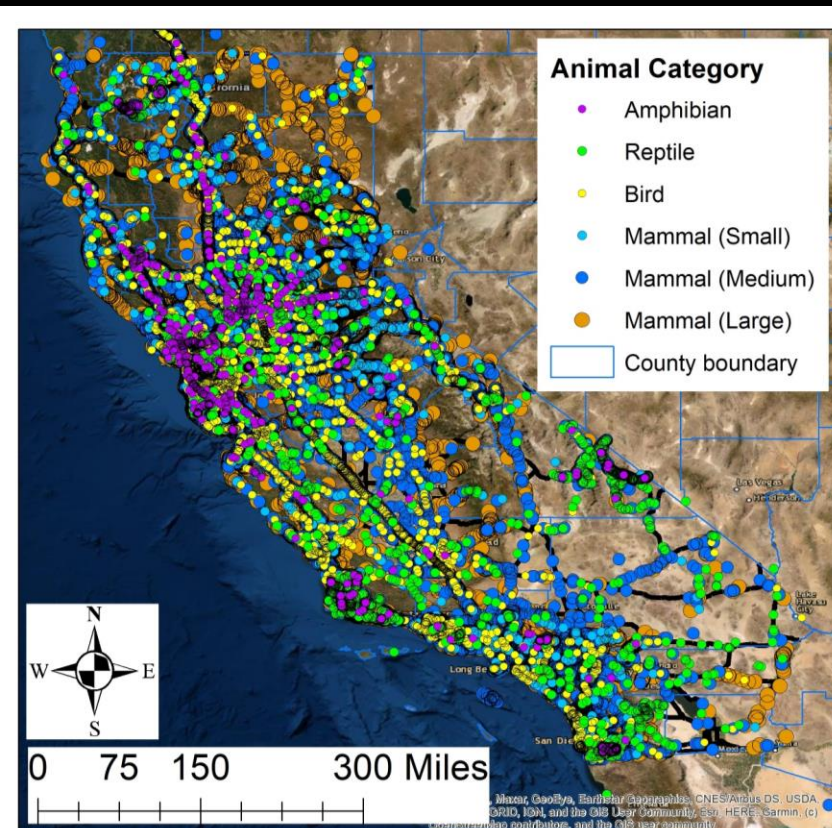
Land Cover

- Habitat/vegetation type
- Density
- Quality
- Special habitats



Wildlife Mortality

- Species
- Locations

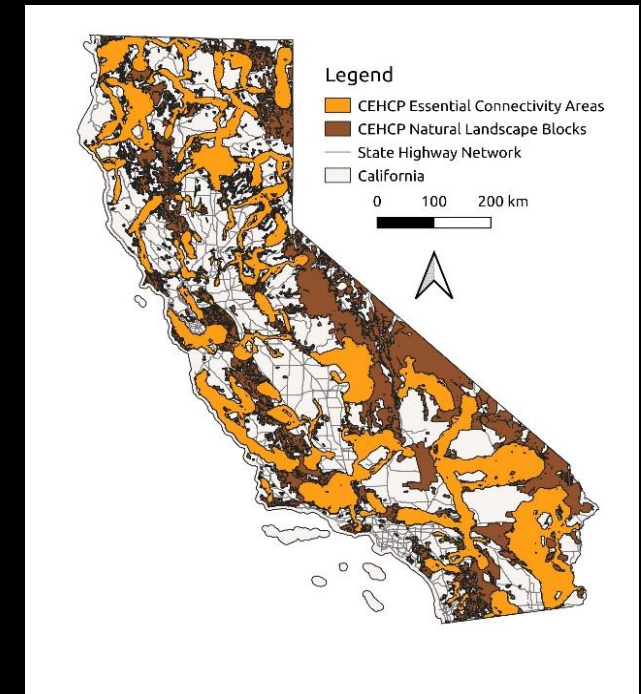
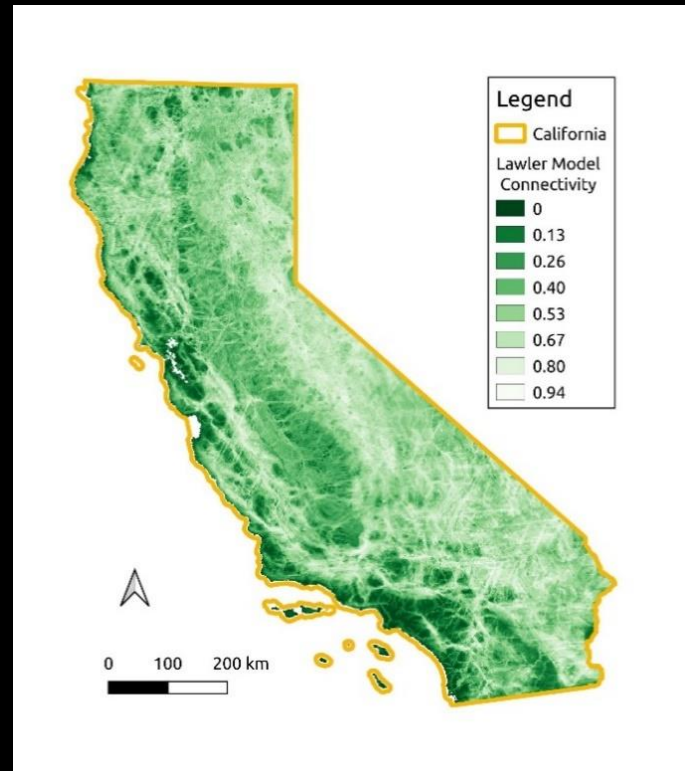
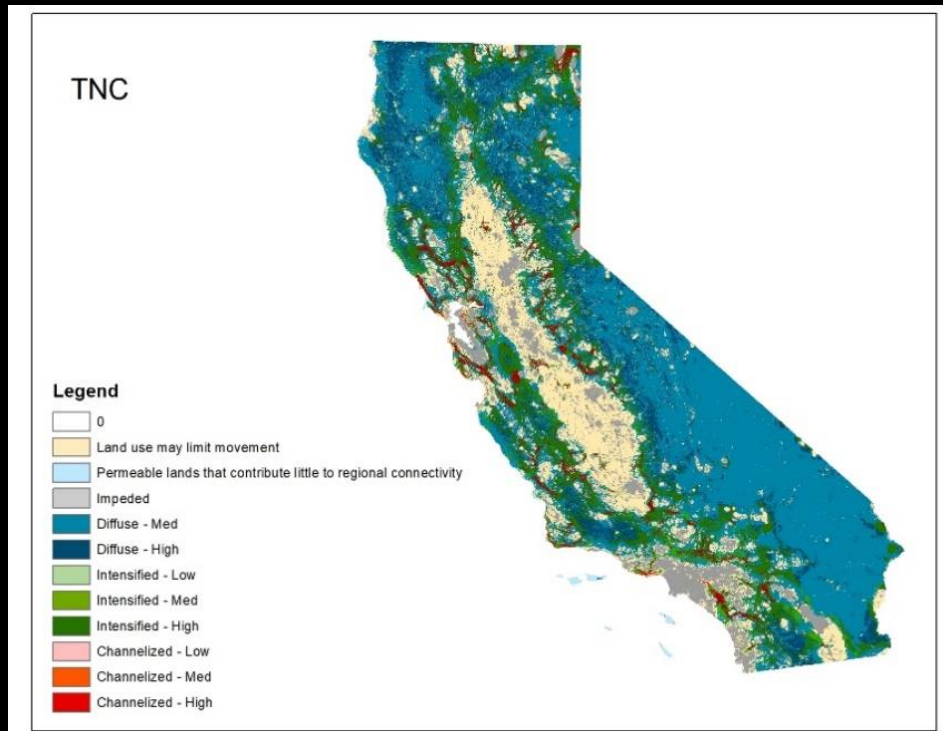


Wildlife Movement

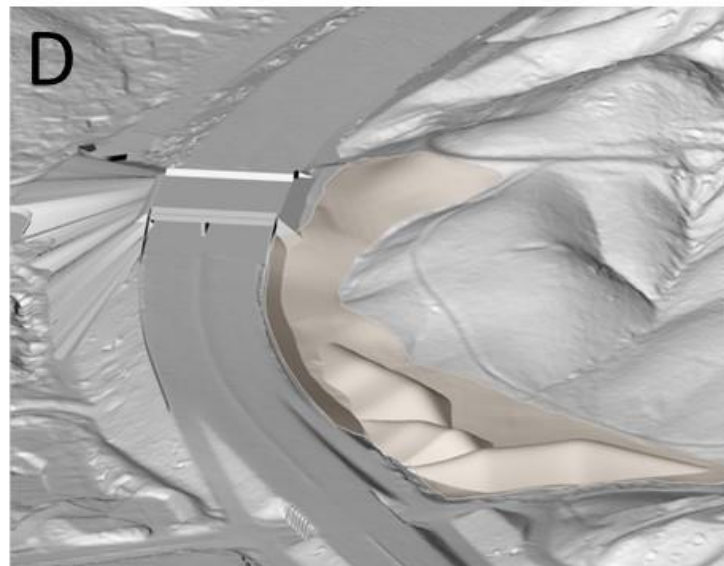
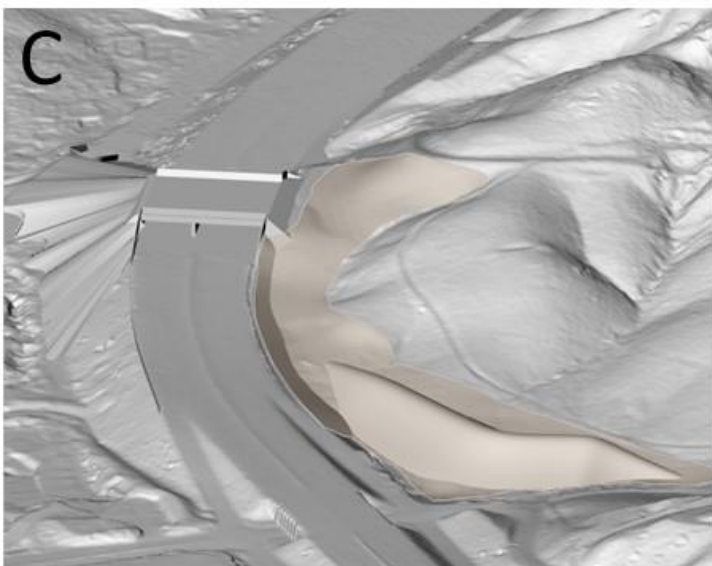
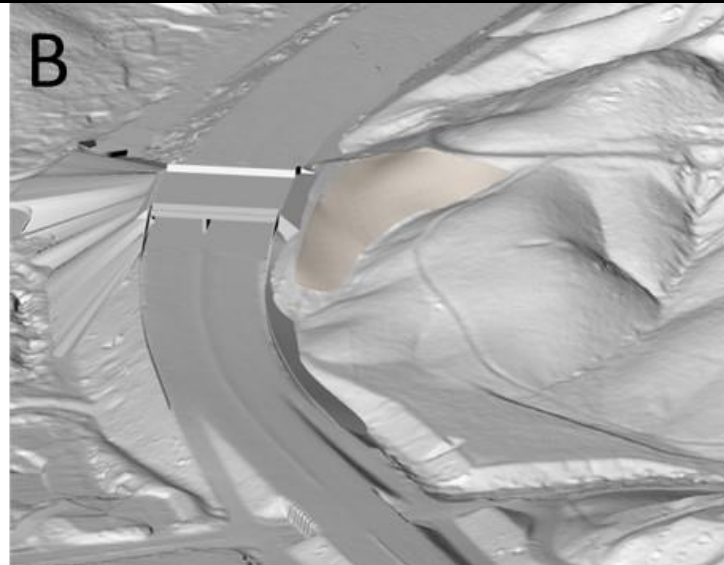
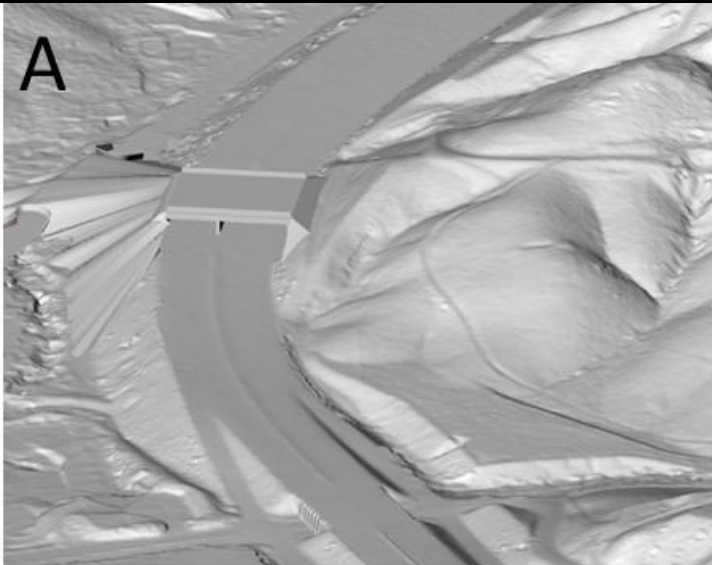
Not much is known about
successful crossing on road surface



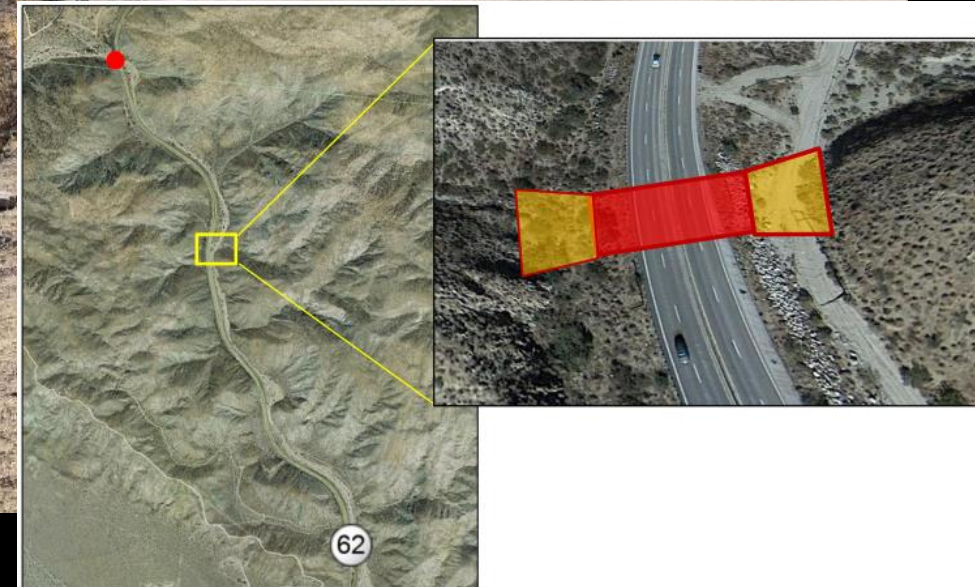
Wildlife Connectivity



Design



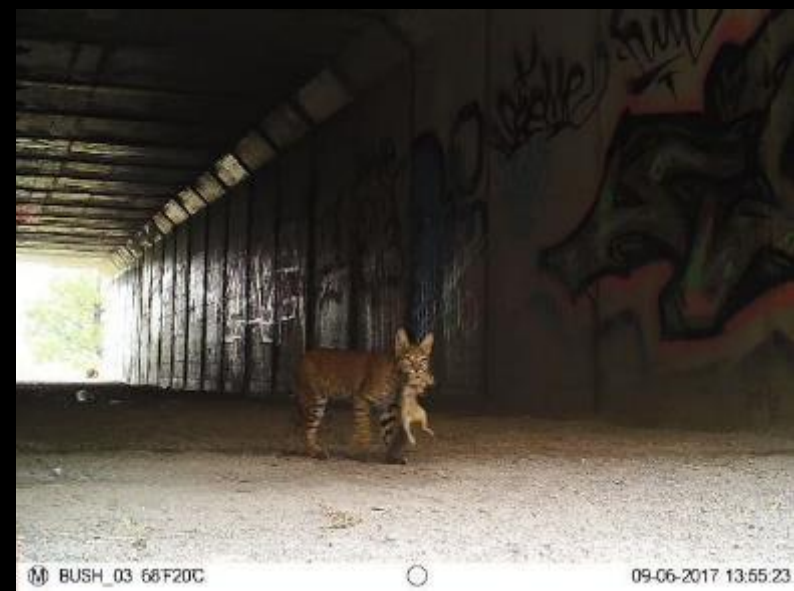
Construction



Contact

fmshilling@ucdavis.edu





BUSH_03 68F20C



09-06-2017 13:55:23