



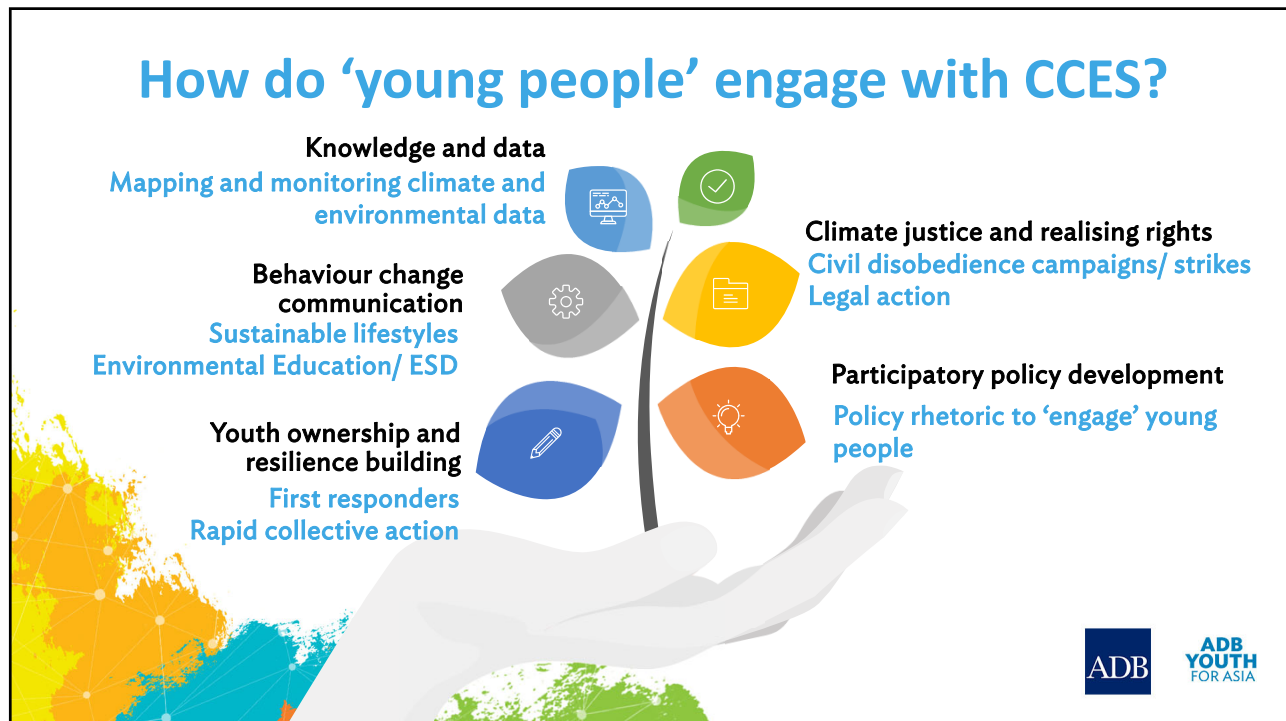
1



2



3



4

How do we 'fit' in?

We can develop solutions to leverage the **voice, insight and action** of youth for climate and environmental action

Voice



As natural collaborators, youth are **powerful partners for co-designing projects**. Digital literacy is high among youth, making them effective communicators, influencers, and advocates of change.

Insight



Youth are **determined and resourceful** in leading field research, accelerating the development of innovative methodologies and interventions. YfA's insights **contribute to innovation and thought leadership in ADB**.

Action



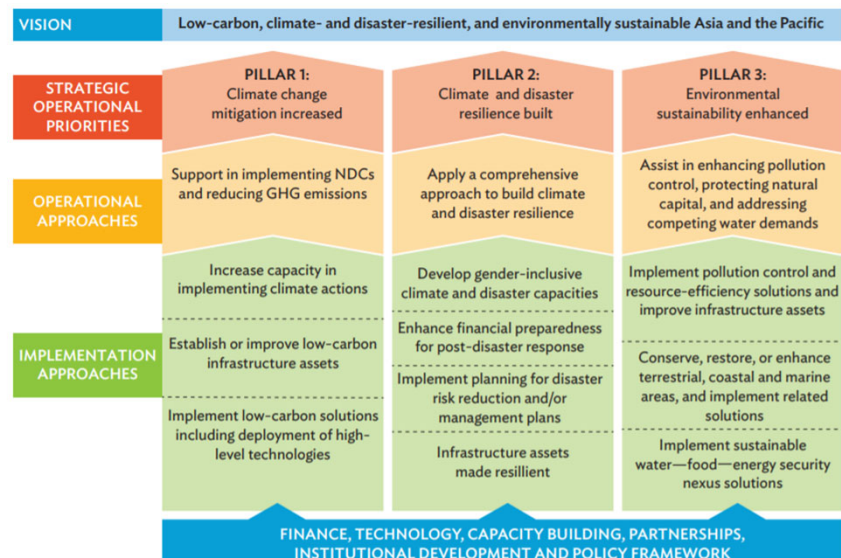
Youth for Asia mobilizes resilient, motivated and passionate youth to **lead the design and implementation of youth components** in ADB projects under S2030 to achieve a Prosperous, Inclusive, Resilient, and Sustainable Asia and the Pacific.



5

CCES & Youth in existing ADB paradigms

Strategy 2030
Operational Priority 3:
Tackling Climate Change,
Building Climate and Disaster
Resilience, and Enhancing
Environmental Sustainability



GHG = greenhouse gas, NDCs = nationally determined contributions
Source: Asian Development Bank, 2019.

6



YfA Experience in CCES



Cambodia: Mainstreaming Climate Change Resilience into Development Planning



Nepal: Peer-to-peer capacity building for the Bagmati River Basin Youth Program (BRBYP)



Catalyzing Youth-Led Climate Action in Atoll Nations



7

Catalyzing Youth-Led Climate Action in Atoll Nations



Key Components

- Youth-Led Climate Change Risk Assessment
- Climate Change Capacity-Building and Innovation Challenge
- Implementation of Climate Innovation Projects
- Intergenerational Dialogues
- Development of Knowledge Products

OUTPUTS

- Youth awareness and knowledge on climate change mitigation and adaptation increased
- Youth skills on climate change project management increased
- Government and development partners awareness, knowledge, and skills on MYE in climate change increased



8

“

The battle against climate change will be won or lost in Asia and the Pacific... and we can win it with young people meaningfully engaged in the process.



ADB
YOUTH
FOR ASIA

9

A banner for ADB Youth for Asia. On the left, there is a collage of young people's faces, with a large, vibrant orange and yellow abstract shape overlapping them. The background is white. On the right, the text 'ADB YOUTH FOR ASIA' is written in large, bold, blue capital letters. Below this, the email addresses 'youthforasia@adb.org' and 'Lsalaysay.consultant@adb.org' are listed in blue. In the bottom right corner, the ADB logo is displayed.

ADB YOUTH FOR ASIA

youthforasia@adb.org
Lsalaysay.consultant@adb.org



10



Young people in Asia-Pacific

- Home to 2 billion people under the age of 30
- Vulnerable to the impacts of climate change

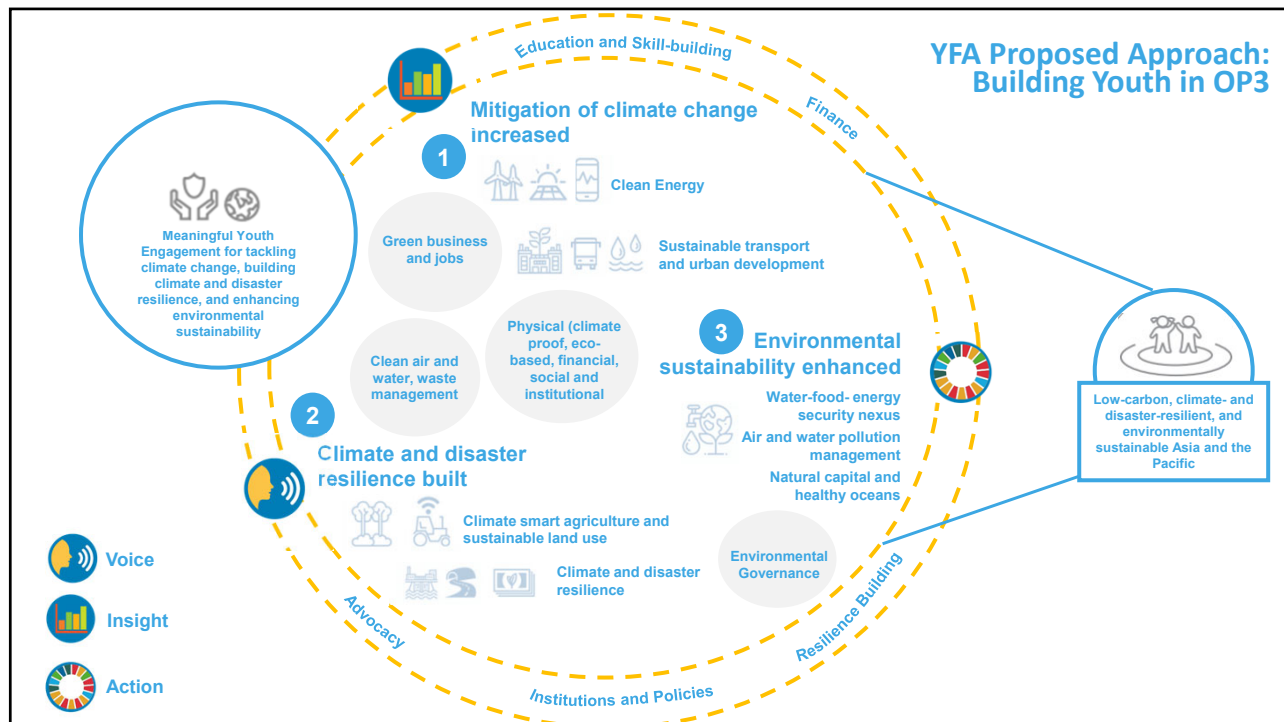


11

YfA's convening power will be used to **mobilize** enthusiastic young people throughout the region with **inclusive and participatory approaches** and improve their **access to the resources** needed for sustainability youth- led climate and **environmental action**



12



13

ADB Corporate Results Framework, 2019–2024			
Level	Pillar 1: Mitigation of climate change increased	Pillar 2: Climate and disaster resilience built	Pillar 3: Environmental sustainability enhanced
Level 1 Development Progress in Asia and the Pacific	<ul style="list-style-type: none"> CO2 emissions per unit of GDP (kg per \$ constant 2010 PPP GDP) 	<ul style="list-style-type: none"> Deaths attributed to climate-related and geophysical hazards (number) Deaths attributed to climate-related and geophysical hazards (number) <ul style="list-style-type: none"> a. Climate-related hazards; b. Geophysical hazards 	<ul style="list-style-type: none"> PM2.5 air pollution, mean annual exposure (micrograms per cubic meter) Proportion of population with primary reliance on clean fuels and technology for cooking (%) Forest area as a proportion of total land area (%) Coverage of protected areas in relation to marine areas (%) Environmental performance index score (average number)
Level 2 Outcomes (Proxies) of Completed Projects	<ul style="list-style-type: none"> People with increased capacity in implementing mitigation and low-carbon development actions (number) Low-carbon solutions promoted and implemented (number) 	<ul style="list-style-type: none"> People with strengthened climate and disaster resilience (number) Gender-inclusive climate and disaster resilience capacity development initiatives implemented (number) Financial preparedness instruments provided (number) National and subnational disaster risk reduction and/or management plans supported in implementation (number) New and existing infrastructure assets made climate and disaster resilient (number) 	<ul style="list-style-type: none"> People benefiting from strengthened environmental sustainability (number) Solutions to enhance pollution control and resource efficiency implemented (number) Solutions to conserve, restore, and/or enhance terrestrial, coastal, and marine areas implemented (number) Terrestrial, coastal, and marine areas conserved, restored, and/or enhanced (hectares) Sustainable water–food–energy security nexus solutions implemented (number)
Level 3	<ul style="list-style-type: none"> Committed operations that support climate change mitigation and adaptation (%) (sovereign and non sovereign) Committed operations supporting climate change (%) (sovereign and non sovereign) <ul style="list-style-type: none"> a. Mitigation; b. Adaptation; c. Both Financing for climate change (\$ billion, cumulative) (sovereign and non sovereign) <ul style="list-style-type: none"> a. Mitigation; b. Adaptation; c. Both Operations that are green, sustainable, inclusive, and resilient (%) (sovereign and non sovereign) 		

14

YfA <> Community Resilience Partnership Program

No resilience at local level can be built without including **young people**

Poor and vulnerable **young women and men**

Applying AIV lens to 'gender mainstreaming' in all program outcomes and interventions



Resilience of poor built through investments that deliver community benefits at large



Poor and vulnerable receive finance for adaptation



Poor and vulnerable women and men participate in decision-making for resilience

