

This is not an ADB material. The views expressed in this document are the views of the author/s and/or their organizations and do not necessarily reflect the views or policies of the Asian Development Bank, or its Board of Governors, or the governments they represent. ADB does not guarantee the accuracy and/or completeness of the material's contents, and accepts no responsibility for any direct or indirect consequence of their use or reliance, whether wholly or partially. Please feel free to contact the authors directly should you have queries.

Global Operational Support Team

(GOST)



Benjamin Stewart,
bstewart@worldbank.org

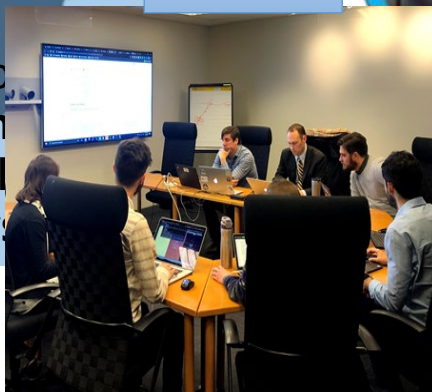
Sr. Geographer
GOST Team Lead



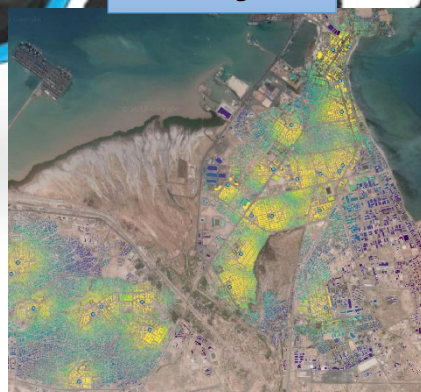
Global Operational Support Team

Support World Bank Group operations to be a **sophisticated consumer of geospatial and big data analysis** in a **cost-effective, efficient way**.

Advise



Analyze



Share

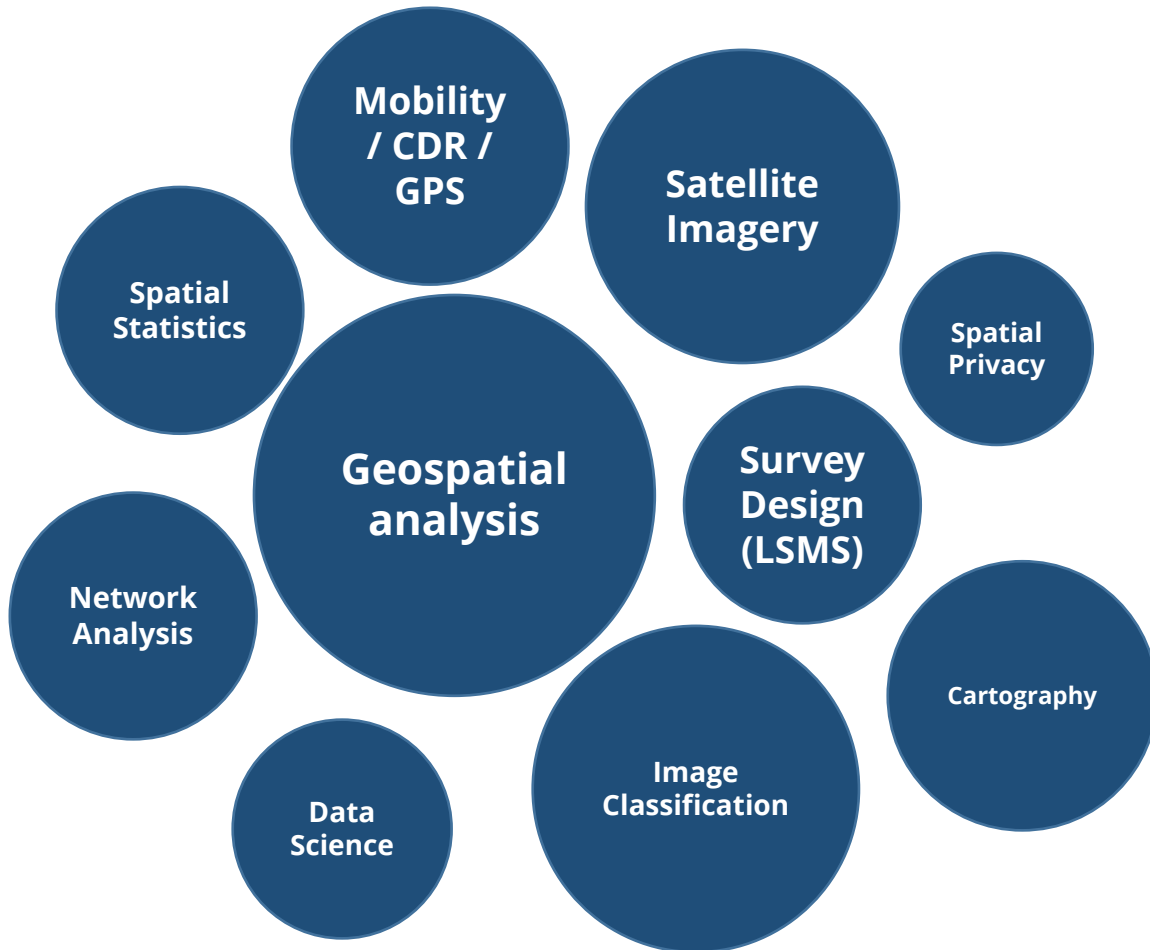


Coordinate



Team Competencies

Areas of Expertise

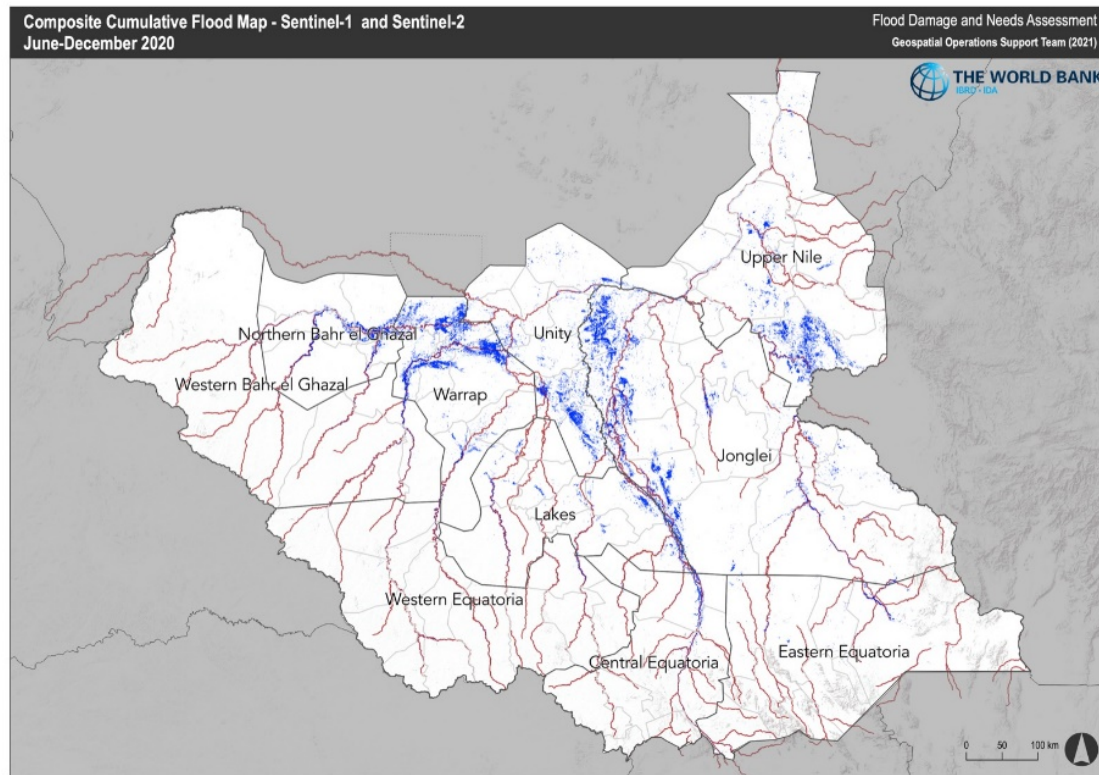


Domains

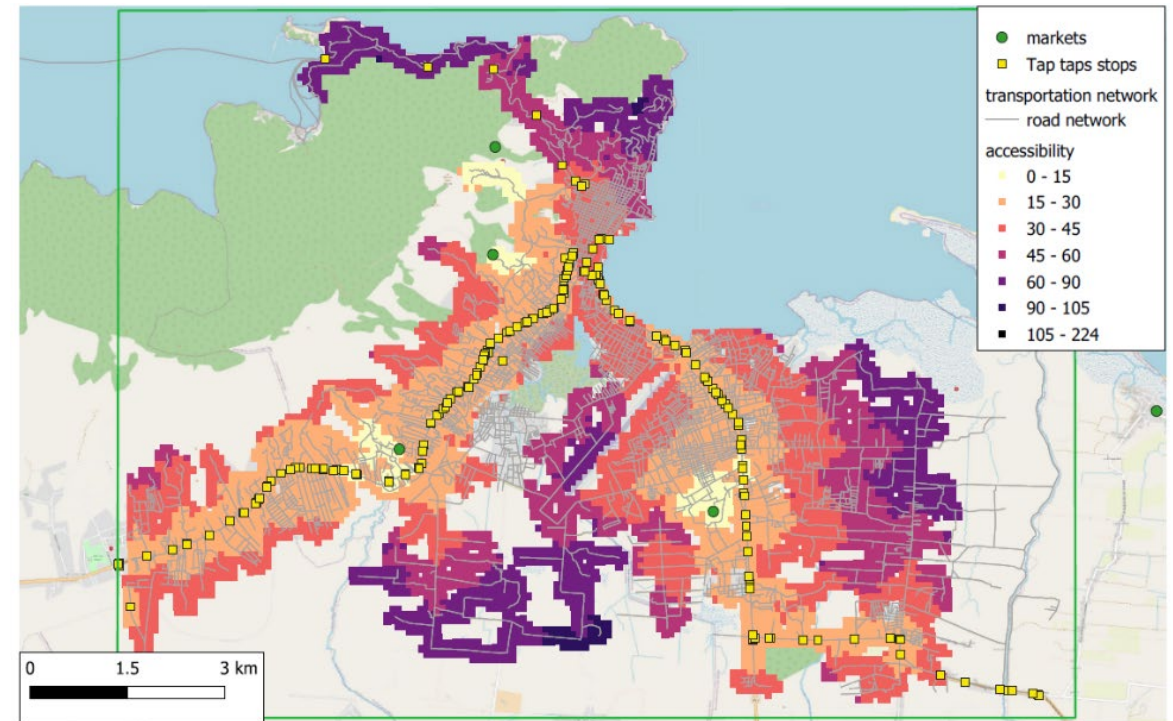
- Market Access, Road Networks, and Criticality/Optimization
- Urbanization, Land Cover Mapping, and change detection.
- Renewable Energy Mapping
- Electrification Planning
- Flood Mapping
- Climate time-series data
- Crop mapping

How? – Just-in time project support




Flood extent mapping using Sentinel and Google Earth Engine



Cap Haitien Accessibility Analysis using GTFS Data



How? – Long-term projects






Global Electrification Platform

Explore least cost electrification strategies around the world, interacting with country contextual data and different investment scenarios.

01 MODEL **58** COUNTRIES



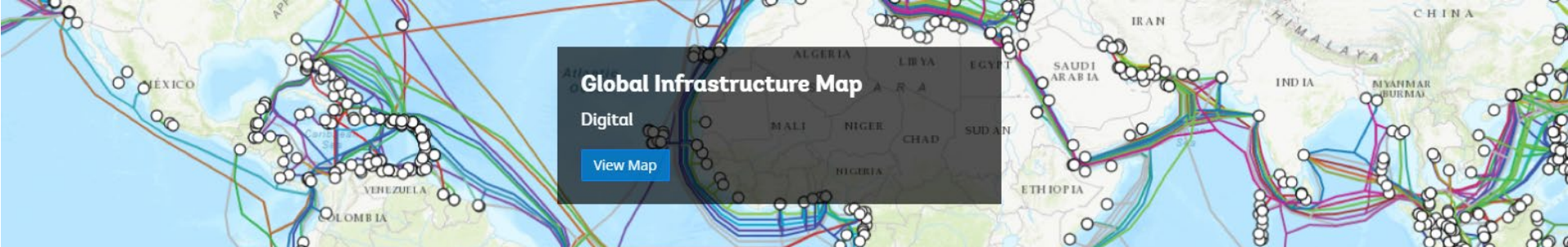
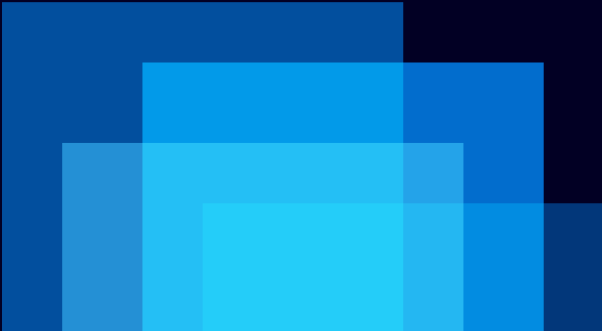


REZoning

THE RENEWABLE ENERGY ZONING TOOL

Identify and explore high potential project areas for solar, onshore wind and offshore wind development

[START EXPLORING](#) [LEARN MORE](#)



Global Infrastructure Map

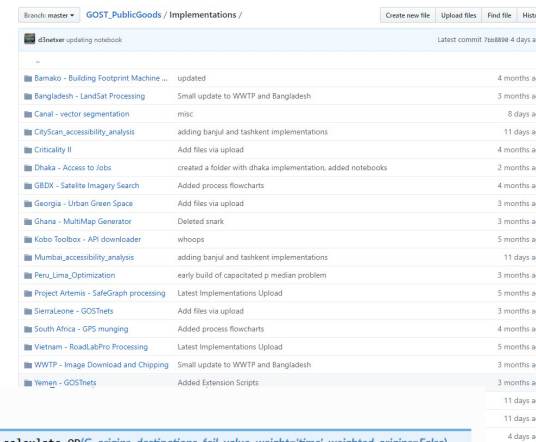
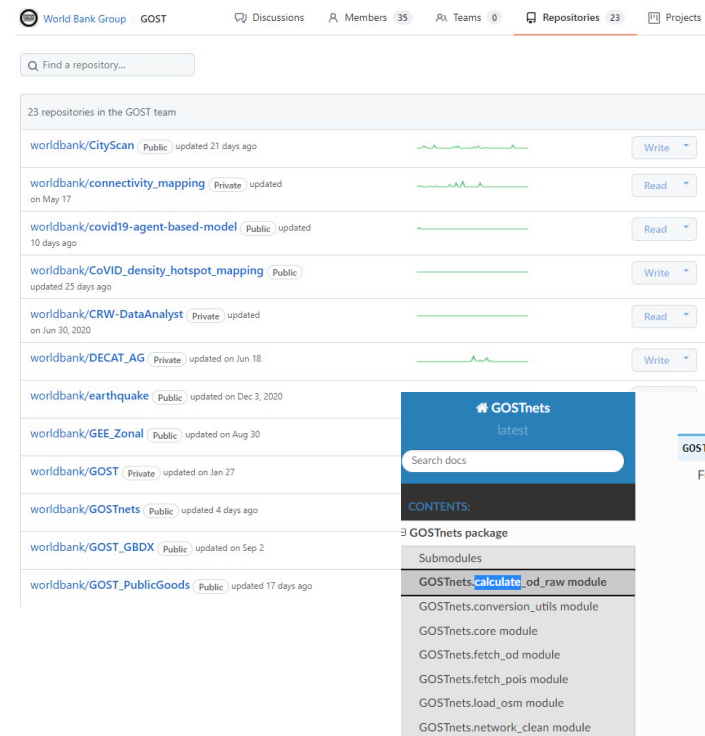
Digital

[View Map](#)

How? – Public Goods

Github

- Administrators of World Bank Github organization
- Document analytical implementations
- Maintain code for reproducible analytics (market access, urbanization metrics, infrastructure mapping, raster tools), or custom data science projects.



`GOSTnets.core.calculate_OD(G, origins, destinations, fail_value, weight='time', weighted_origins=False)`

Function for generating an origin: destination matrix

- Parameters:**
- **G** – a graph containing one or more nodes
 - **fail_value** – the value to return if the trip cannot be completed (implies some sort of disruption / disconnected nodes)
 - **origins** – a list of the node IDs to treat as origins points
 - **destinations** – a list of the node IDs to treat as destinations
 - **weight** – use edge weight of 'time' unless otherwise specified
 - **weighted_origins** – equals 'true' if the origins have weights. If so, the input to 'origins' must be dictionary instead of a list, where the keys are the origin IDs and the values are the weighted demands.

Returns: a numpy matrix of format OD[o][d] = shortest time possible

FY22: Re-negotiate Master Service Agreements with imagery providers

- We are currently in the process of renegotiating agreements to simplify imagery procurement.
 - Established discounts
 - Licensing to allow distribution to client countries





Lights Every Night

Entire Nighttime Lights repository (1992 – Present) of nightly imagery available for the first time in the open

[World Bank blog on LEN](#)

[AWS open data repository](#)

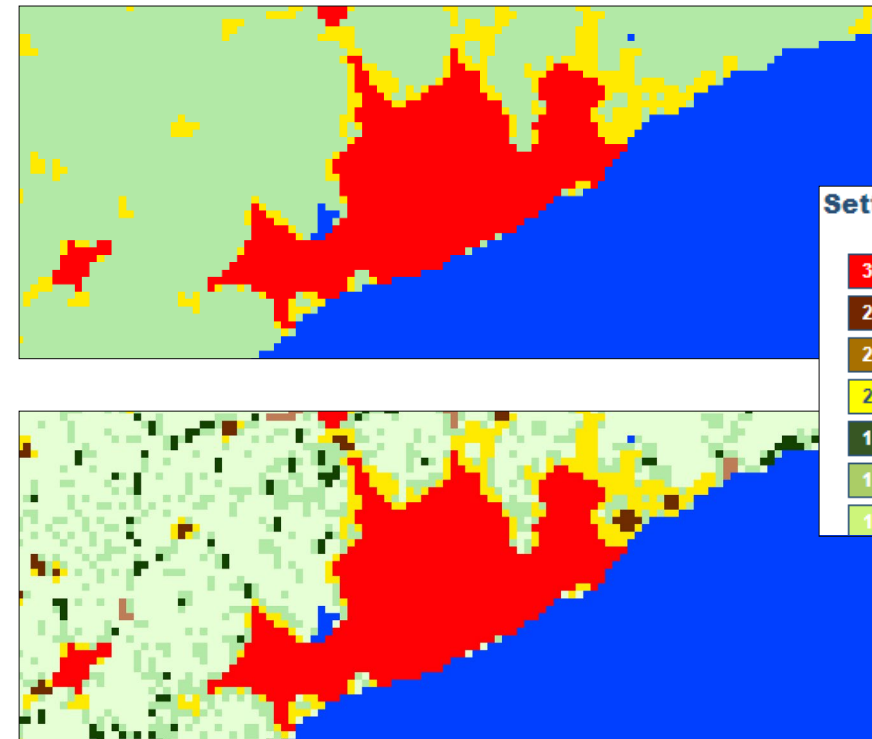
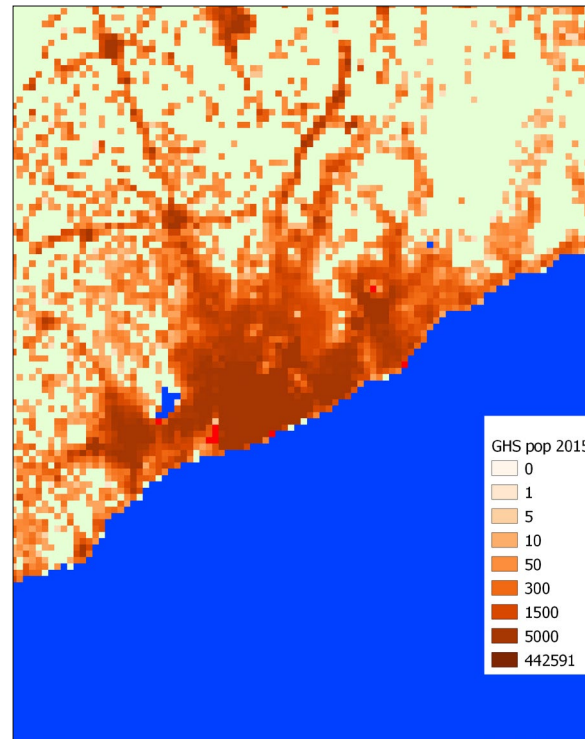
Sample Analytics



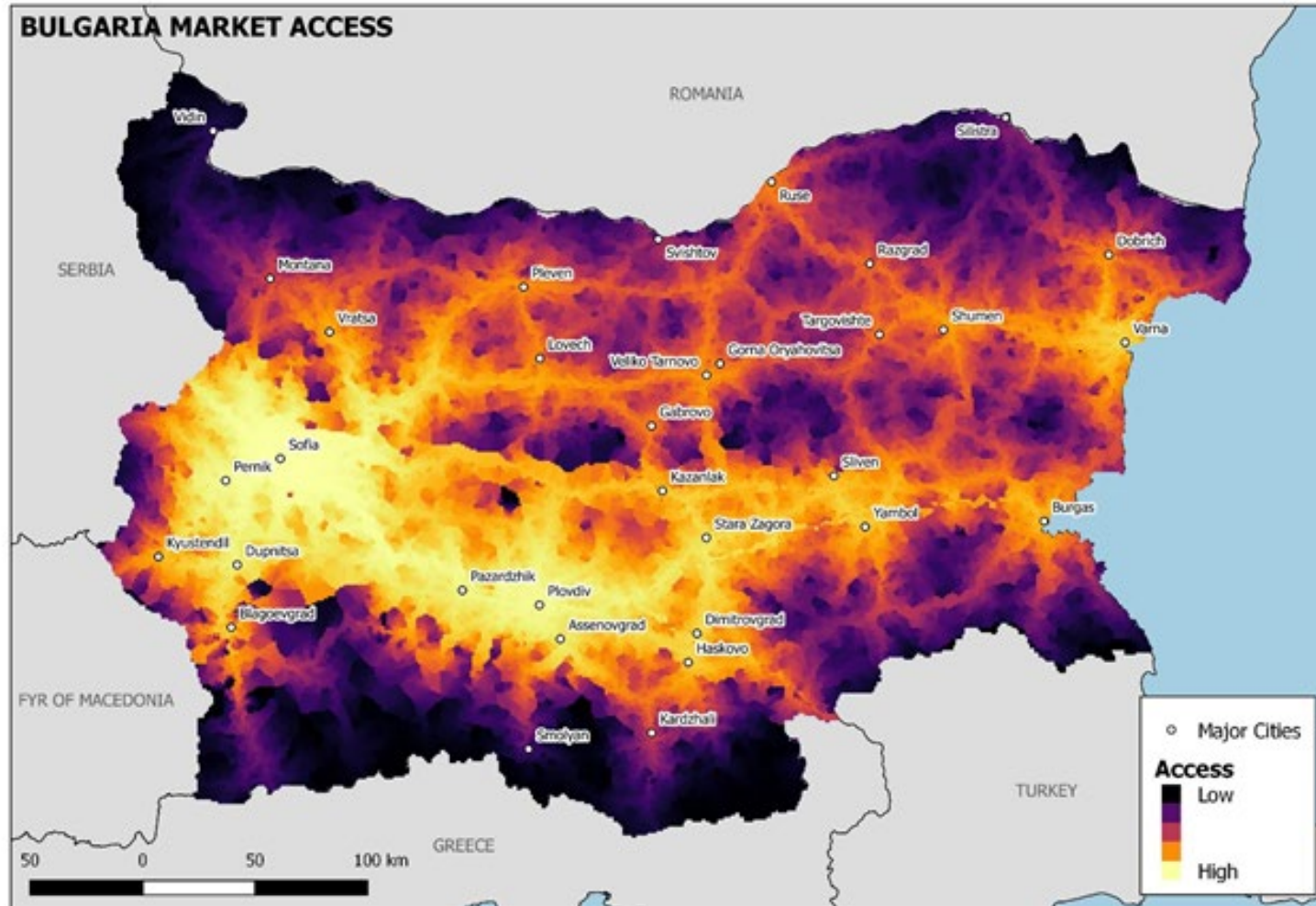
WORLD BANK GROUP
Global Operational Support Team

Urbanization

- European Commission
 - Simple classification
 - Advanced classification
 - UCDB – cities database
- Oxford Economics Global Cities Database Projections
 - Variables included
 - Extents expected Nov 2021



Market Access



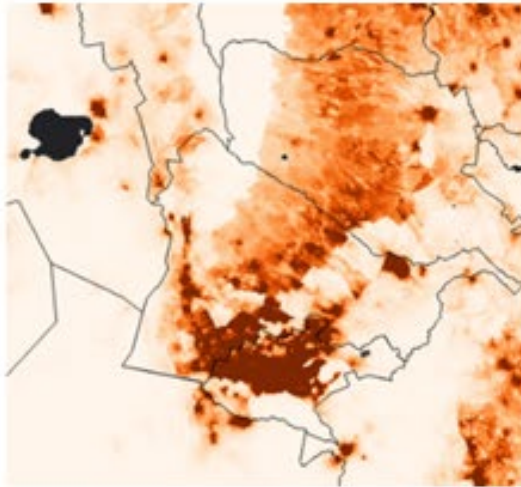
Markets

Schools?

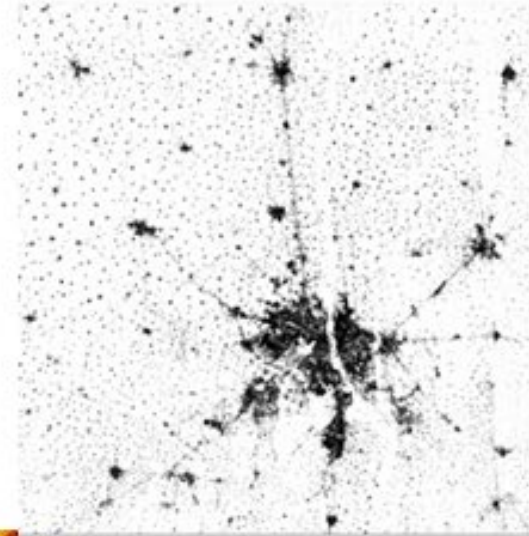
Hospitals?

Analytics from publicly available datasets

Night
Time
Lights



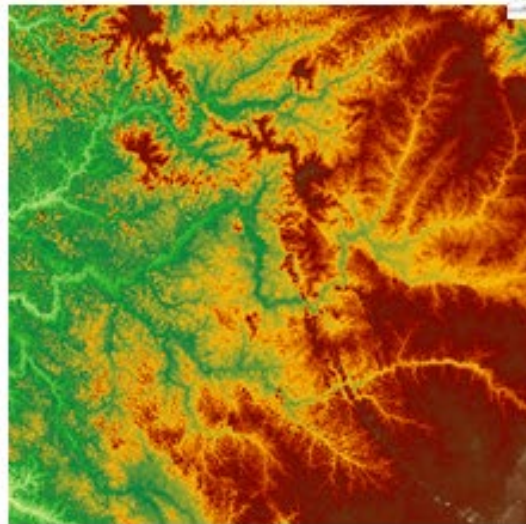
Digital
Elevation
Model



Land Use /
Land Cover



WoldPop



Global
Urban
Footprint



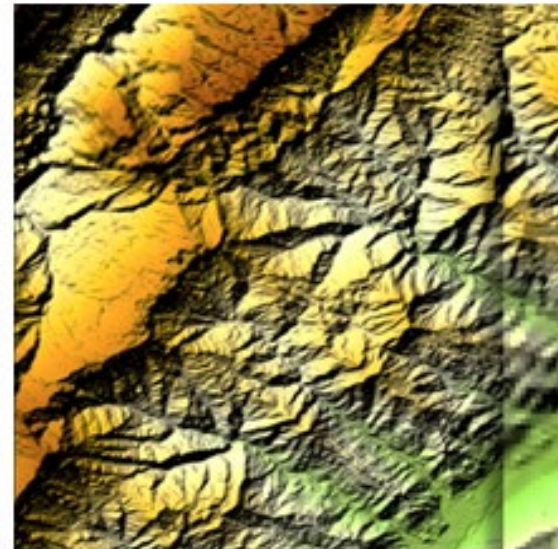
Understanding possibilities of commercial datasets

**Building
footprints**



Roads

**High Resolution
DEM (< 10m)**



Car Count

Key Resources (non-GOST)



Find WB Data
Resources

Find External
Collaborators

Event & Workshop
Materials

THE DATA LAB HELPS SOLVE DEVELOPMENT CHALLENGES

The Lab improves internal coordination between World Bank data talent; expands pro-bono partnerships with private firms and academic institutions; and builds staff awareness and capacity to deliver modern data solutions in operations and research. Join today!

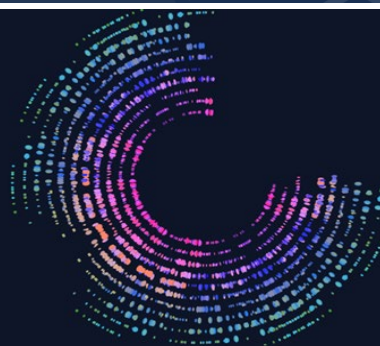


Development Data Partnership

Public-Private Data Partnerships for International Development

The Development Data Partnership organizes opportunities for World Bank staff to work with technology companies on solving development challenges.

HOW IT WORKS



WhereIsMyTransport



Google

Uber



Development Data Hub

HOME

DATA

Tell us what you think of the new refreshed look and feel here - [FEEDBACK](#)

Search & Share Development Data

Enter Keywords...

12,963 datasets

Featured



World Development Report 2021

The World Development Report 2021: **Data for Better Lives** explores the tremendous potential of the changing data landscape to improve the lives of poor people, while also acknowledging its potential to open back doors that



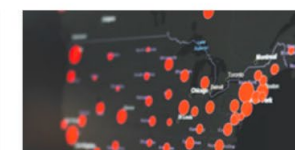
Statistical Performance Indicators

National statistical systems are facing significant challenges. These challenges arise from increasing demands for high quality and trustworthy data to guide decision making, coupled with the rapidly changing landscape of the data revolution.



World Development Indicators

The primary World Bank collection of development indicators, compiled from officially-recognized international sources. It presents the most current and accurate global development data available, and includes national, regional and global estimates.



COVID-19 Data

Data relevant to the coronavirus pandemic, drawn from the World Bank's data catalog and other authoritative sources.

<https://datacatalog.worldbank.org>

<https://wbdatalab.org/>



gost@worldbank.org