

“Slums and the city: Enabling community level interventions in Cirebon City, Indonesia”

Tiffany M. Tran

Human Settlements Expert

Livable Settlements Investment Project, ADB



URBAN CLIMATE
CHANGE RESILIENCE
TRUST FUND
Asian Development Bank



The
ROCKEFELLER
FOUNDATION

 Schweizerische Eidgenossenschaft
Confédération suisse
Confederazione Svizzera
Confederaziun svizra
Swiss Confederation
Federal Department of Economic Affairs,
Education and Research SAE
State Secretariat for Economic Affairs SECO


ukaid
from the British people



Human
Capital

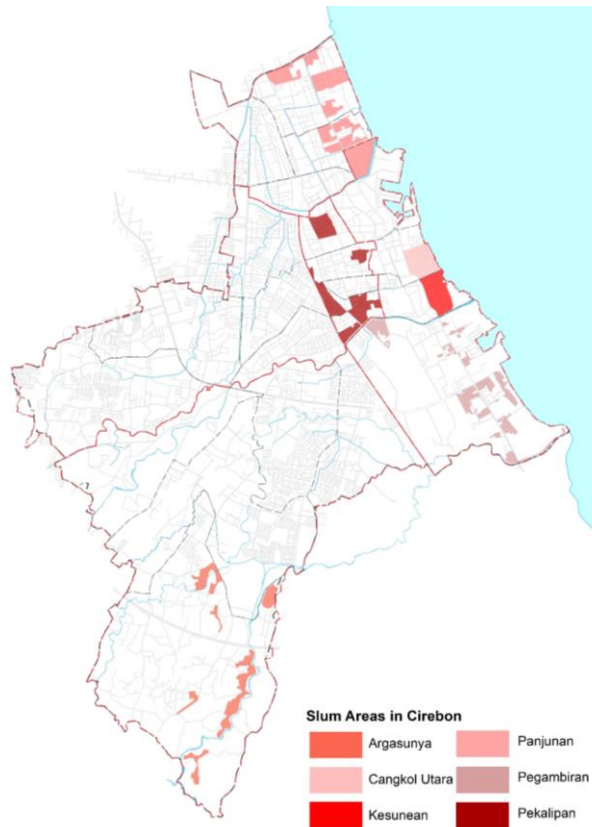
Built
Capital

Natural
Capital

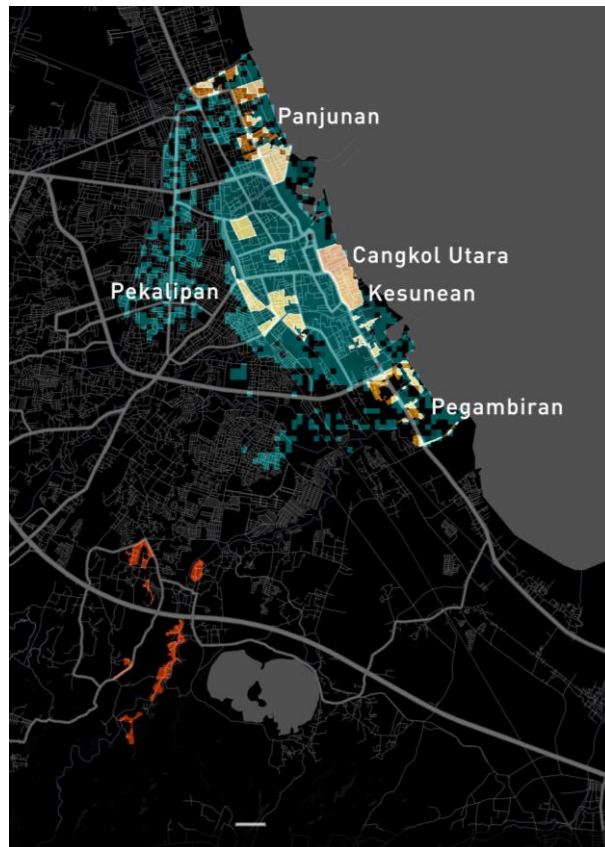
Social
Capital

Aerial view of Cirebon City, looking east. (Government of Cirebon City).

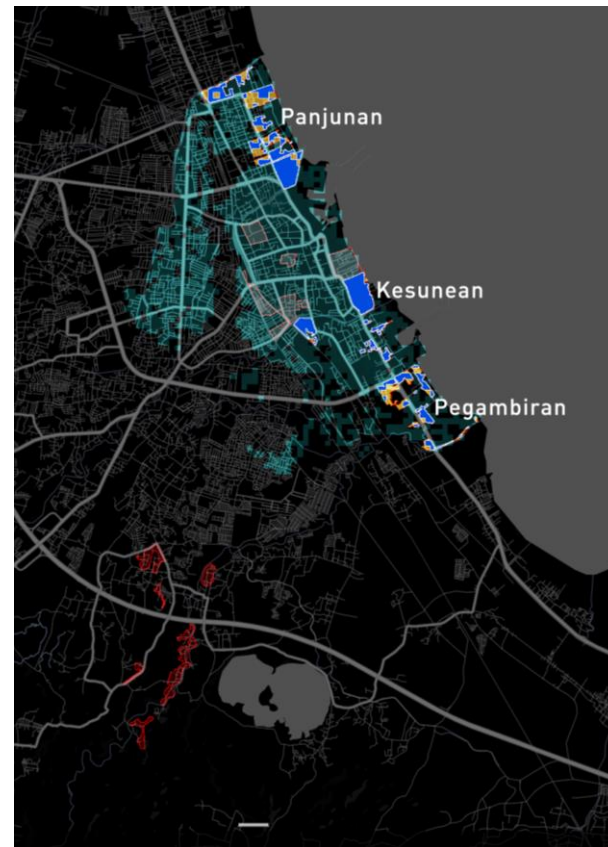
SELAMAT DATANG DI KOTA CIREBON



Slum
Areas



Slum
Areas + Sea level
rise



Slum
Areas + Sea level
rise + Poor
drainage

Kawasan Cangkol Utara



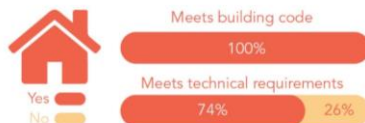
Security of Tenure



Households with Gov't Subsidies



Housing Conditions



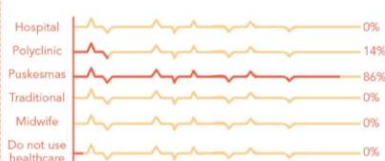
Solid Waste Management



Access to Education



Access to Healthcare



Kawasan Argasunya



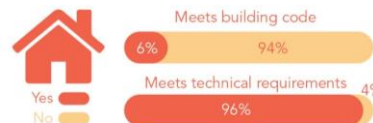
Security of Tenure



Households with Gov't Subsidies



Housing Conditions



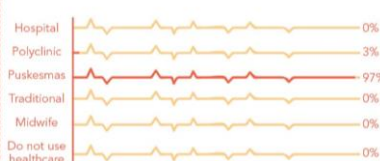
Solid Waste Management

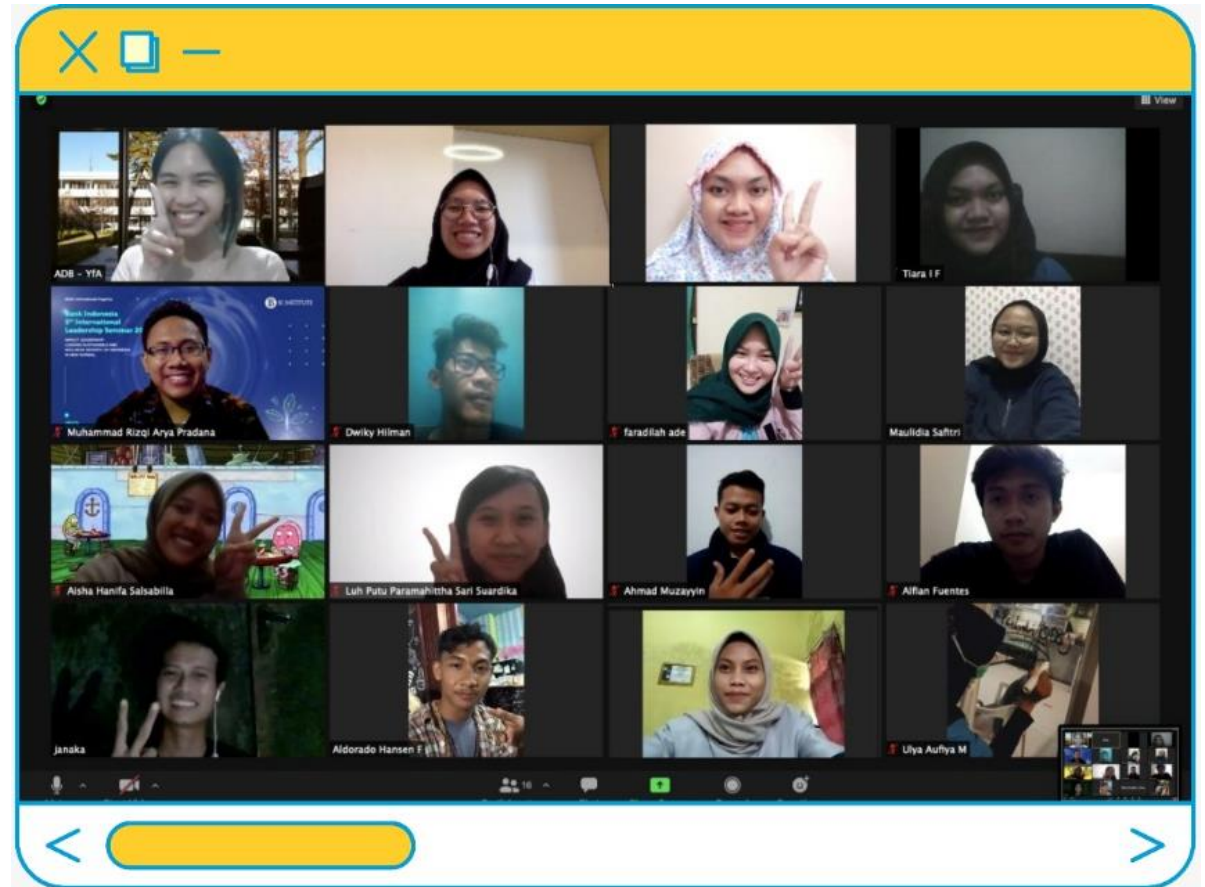


Access to Education



Access to Healthcare





Thank you



URBAN CLIMATE
CHANGE RESILIENCE
TRUST FUND
Asian Development Bank



The
ROCKEFELLER
FOUNDATION



Schweizerische Eidgenossenschaft
Confédération suisse
Confederazione Svizzera
Confederaziun svizra

Swiss Confederation

Federal Department of Economic Affairs,
Education and Research EAER
State Secretariat for Economic Affairs SECO



MONASH
University



LoCAL
LOCAL CLIMATE ADAPTIVE
LIVING FACILITY