

The views expressed in this presentation are the views of the author/s and do not necessarily reflect the views or policies of the Asian Development Bank, or its Board of Governors, or the governments they represent. ADB does not guarantee the accuracy of the data included in this presentation and accepts no responsibility for any consequence of their use. The countries listed in this presentation do not imply any view on ADB's part as to sovereignty or independent status or necessarily conform to ADB's terminology.

Opening Session

Wendy Walker

Chief, Social Development Thematic Group
Asian Development Bank



URBAN CLIMATE
CHANGE RESILIENCE
TRUST FUND
Asian Development Bank



The
ROCKEFELLER
FOUNDATION



Schweizerische Eidgenossenschaft
Confédération suisse
Confederazione Svizzera
Confederaziun svizra

Swiss Confederation

Federal Department of Economic Affairs,
Education and Research EAER
State Secretariat for Economic Affairs SECC



Informal settler families often...



Live in areas prone to climate and disaster risks



Live in overcrowded settlements



Has little or no access to social protection



Use poorly maintained paths and roads



Have limited access to basic services



Have high daily costs, but limited savings

Many informal workers...



Are not likely to benefit from social protection



Likely do not have healthcare



Tend to perform tasks that are strenuous or hazardous to health



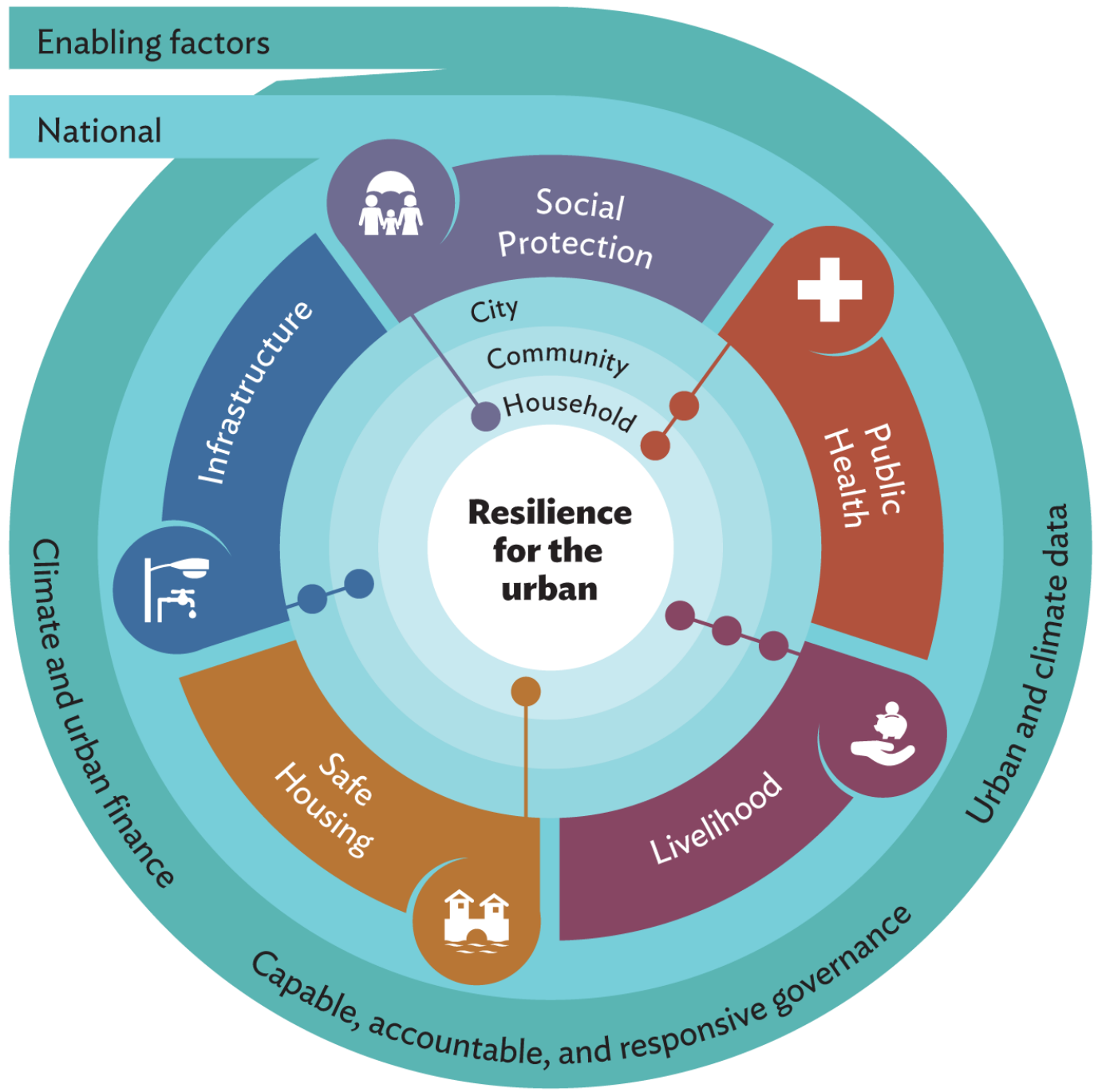
Work in risk-prone areas



Face uncertainty of work



Have low earnings and limited access to financing





A word cloud centered around the word "resilience". The word "resilience" is the largest and most prominent, located in the center. Surrounding it are various other terms in different sizes and orientations, all in a teal color. The terms include: "transformation" (top), "land-use planning" (top), "affordable housing" (top), "investment" (top-right), "good governance" (middle-left), "compound hazards" (middle-right), "financing" (left), "inclusion" (right), "urban agriculture" (bottom-left), "community infrastructure" (bottom-right), "health" (bottom-center), "social protection" (bottom-center), "graduation approach" (bottom-left), "Information" (bottom-right), and "sustainable livelihood" (bottom).

transformation
land-use planning
affordable housing
investment
good governance
compound hazards
financing **resilience** inclusion
urban agriculture community infrastructure
health social protection
graduation approach **Information**
sustainable livelihood

Thank you

