

The views expressed in this material are the views of the author/s and do not necessarily reflect the views or policies of the Asian Development Bank, or its Board of Governors, or the governments they represent. ADB does not guarantee the accuracy of the data included in this presentation and accepts independent status or necessarily conform to ADB's terminology.

Community Resilience Partnership Program (Gender Window)

Alex Fowler, Resilience Specialist and
Sugar Gonzales, Climate Change Officer (Adaptation)
Asian Development Bank



URBAN CLIMATE
CHANGE RESILIENCE
TRUST FUND
Asian Development Bank



The
ROCKEFELLER
FOUNDATION



Schweizerische Eidgenossenschaft
Confédération suisse
Confederazione Svizzera
Confederaziun svizra
Swiss Confederation
Federal Department of Economic Affairs,
Education and Research SAE
State Secretariat for Economic Affairs SECO



What is the Community Resilience Partnership Program (CRPP)?

Partnership program to strengthen climate resilience by scaling up climate adaptation measures at the community level, that explicitly address the nexus between climate, poverty and gender.



What are the objectives of the CRPP?

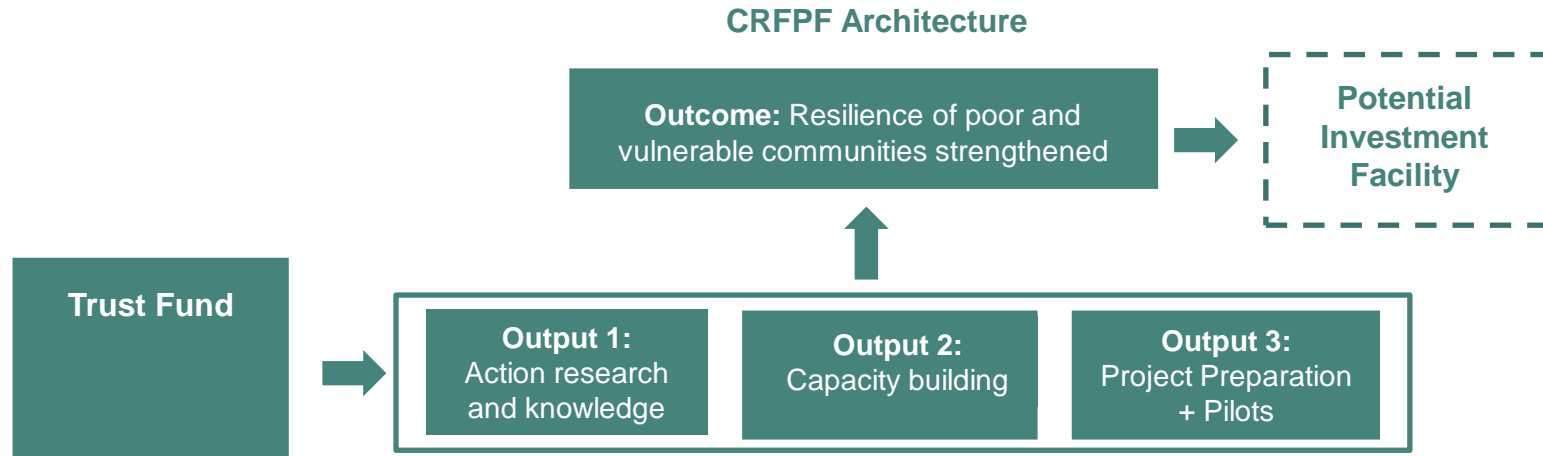
- ❑ Mobilize large-scale public investments in poverty reduction to support community-led adaptation
Examples: Adaptive social protection, climate smart agriculture, resilience through vocational training etc.
- ❑ Strengthen climate policies and plans to support financing for community-led adaptation
Example: community-driven approaches in National Adaptation Plans
- ❑ Achieve meaningful participation for poor women and men in resilience-related decision-making
Example: Risk-informed decentralization policies and programs



How will the CRPP provide support?

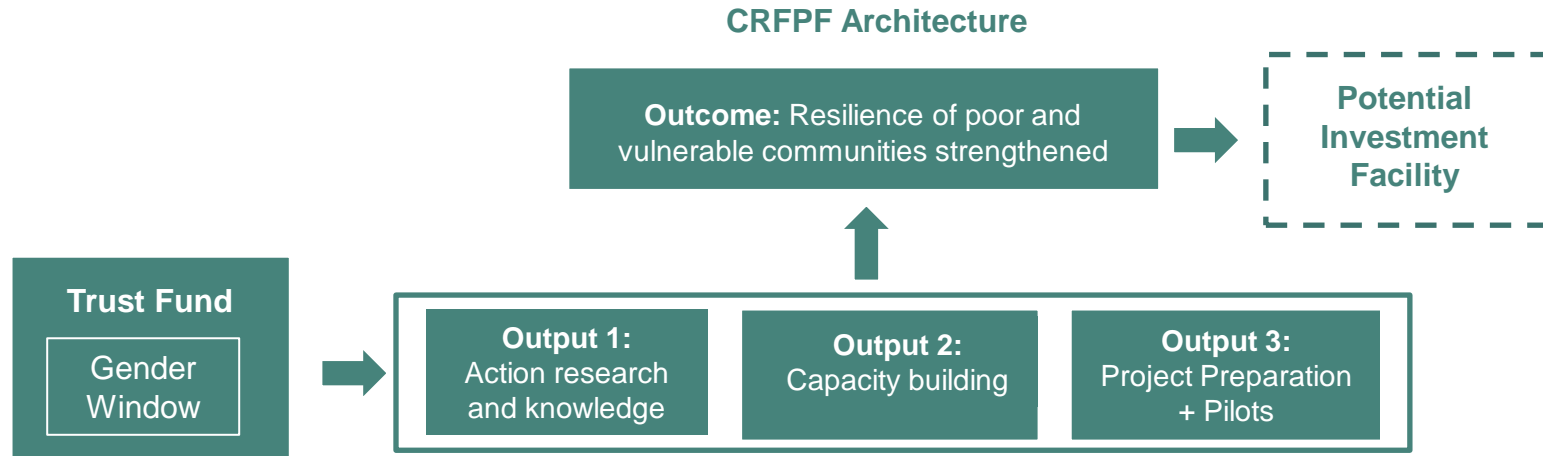
A multi-donor trust fund has been established to provide grant resources and technical assistance related support for

- ✓ Action research and knowledge work to identify investment opportunities for resilience building
- ✓ Building capacity of local institutions and communities to lead community-level adaptation measures
- ✓ Support governments in preparation of large-scale investment projects
- ✓ Pilots to demonstrate innovative approaches and solutions



What is the Gender Window of the CRPP?

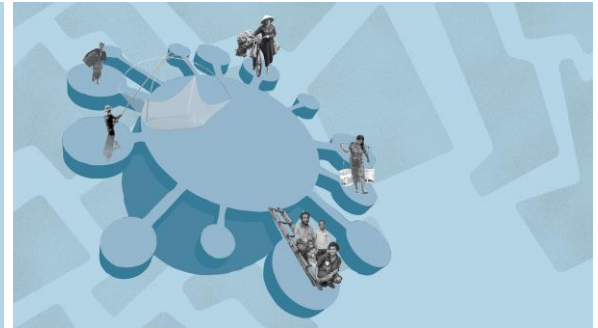
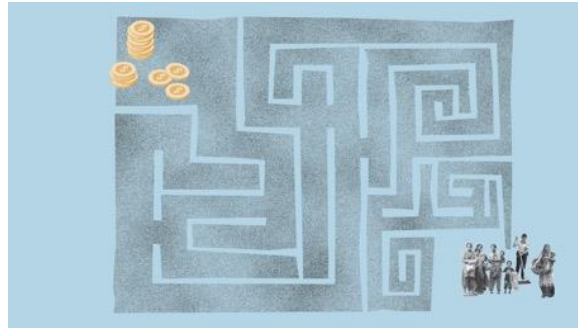
Specific dedicated resources for identifying, developing, and implementing investments that explicitly strengthen the resilience of women, particularly poor women, to the negative impacts of climate change.



Why is the CRPP Gender Window needed?

The CRPP's gender window has been created in response to the recognition that:

- ✓ Women and men are impacted differently by climate change.
- ✓ Women have a critical role to play in advancing investment in building resilience to climate change, especially at the local level.
- ✓ Existing national climate adaptation policies, as well as sectoral plans and policies, often do not consider women's role in resilience building an explicit priority – this translates into little investment in women's climate resilience.



How the Gender Window will provide support - Technical assistance

Generate the necessary political will, capacity, and commitment from governments and communities to invest in women-focused adaptation measures that help tackle climate change.

- Carry out action research to generate knowledge and evidence to make the case for women-focused adaptation investments.
- Support small-scale innovations and pilot projects.
- Host multi-stakeholder policy dialogues and knowledge-sharing forums to build a culture conducive to increased investment in women's climate resilience.
- Strengthen institutional and policy frameworks.



How the Gender Window will provide support - Project preparation

Leveraging sizable investment in adaptation projects through the preparation of large-scale investments that explicitly strengthen the climate resilience of women, particularly poor women, and/or adaptation investments that are led by women.

- Use gender-disaggregated climate risk information and data.
- Include outputs that address structural inequalities between men and women.
- Ensure sustainable outcomes.
- Monitor, evaluate, and learn.



How the Gender Window will provide support - Grants

Provide grant resources for the implementation of climate adaptation initiatives that explicitly focus on building the resilience of women as part of new or ongoing ADB programs.

- Community based and led by women.
- Interventions will include activities to strengthen women's self-reliance, leadership, and confidence.



CRPP is delivered through partnerships



Thank you



URBAN CLIMATE
CHANGE RESILIENCE
TRUST FUND
Asian Development Bank



The
ROCKEFELLER
FOUNDATION



Schweizerische Eidgenossenschaft
Confédération suisse
Confederazione Svizzera
Confederaziun svizra

Swiss Confederation

Federal Department of Economic Affairs,
Education and Research EAER
State Secretariat for Economic Affairs SECO



 Atlantic Council

 Adrienne Arsht-
Rockefeller Foundation
Resilience Center



 iied International Institute
for Environment
and Development



MONASH
University



LoCAL
LOCAL CLIMATE ADAPTIVE
LIVING FACILITY