

An aerial photograph of a Kiribati island, showing a lush green landscape with palm trees, a sandy beach, and a lagoon. The island is surrounded by the ocean, and the sky is blue with some clouds. The text 'Kiribati: Outer Islands Transport Infrastructure Investment Project' is overlaid on the right side of the image.

Kiribati: Outer Islands Transport Infrastructure Investment Project

Transport and Communications Division, PARD

Cindy Bryson,
Social Development
Specialist

Cha-Sang Shim,
Senior Transport Specialist
Project Team Leader

Photos used in the presentation are representative only.



Philippine Sea

PHILIPPINES

INDONESIA

Java Sea

Timor Sea

AUSTRALIA

Coral Sea

Great Australian Bight

Tasman Sea

NEW ZEALAND

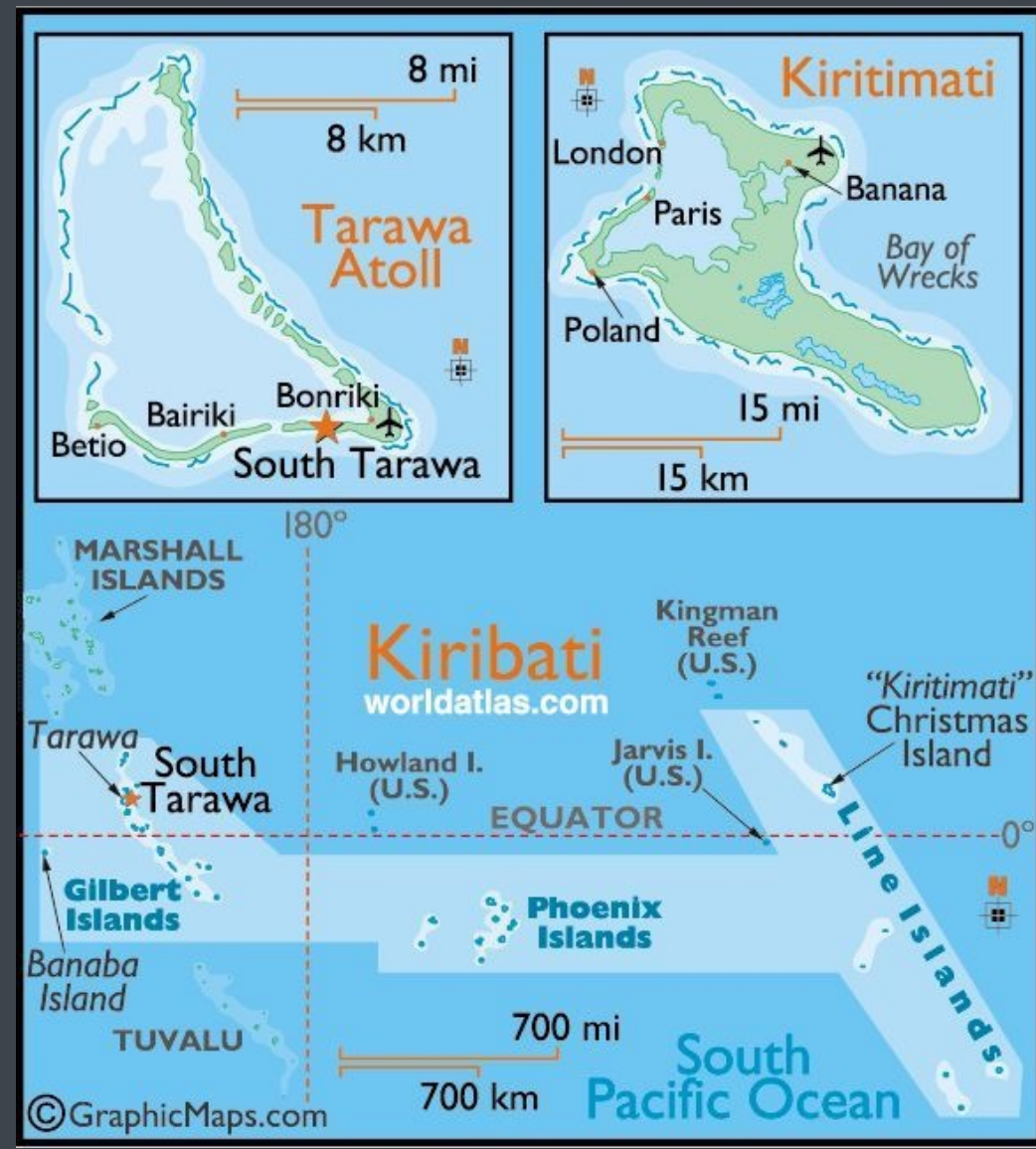
Pacific Ocean



Kiribati

33 small islands
3.5million km² of ocean

Population, 115,000
Capital: South Tarawa, Tarawa Atoll





Photos used in the presentation are representative only.

Dependent on maritime transport

Flights are faster but more expensive

Airfields occasionally close due to poor runway

**Maritime transport used for passenger, cargo
and vehicle movement**

Distant island communities sometimes wait long periods
for resupply



Photos used in the presentation are representative only.

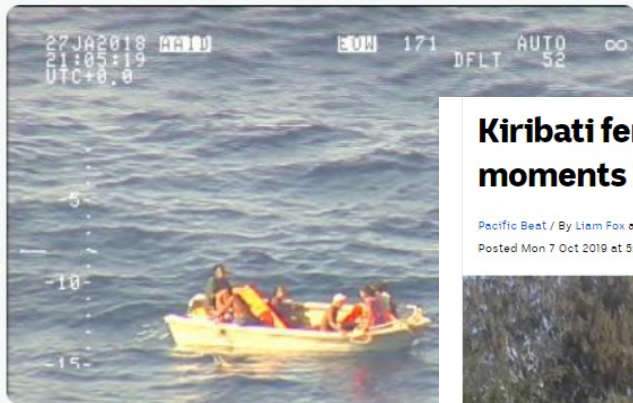


Royal NZ Air Force
@NZAirForce



NEWS || The @NZAirForce P-3K2 Orion has found seven survivors from a ferry with 50 people on board that was reported missing in Kiribati a week ago. MORE: bit.ly/2DM1WZy.

#Force4Good



1:05 PM · Jan 28, 2018

30 3 Share this Tweet

[Tweet your reply](#)

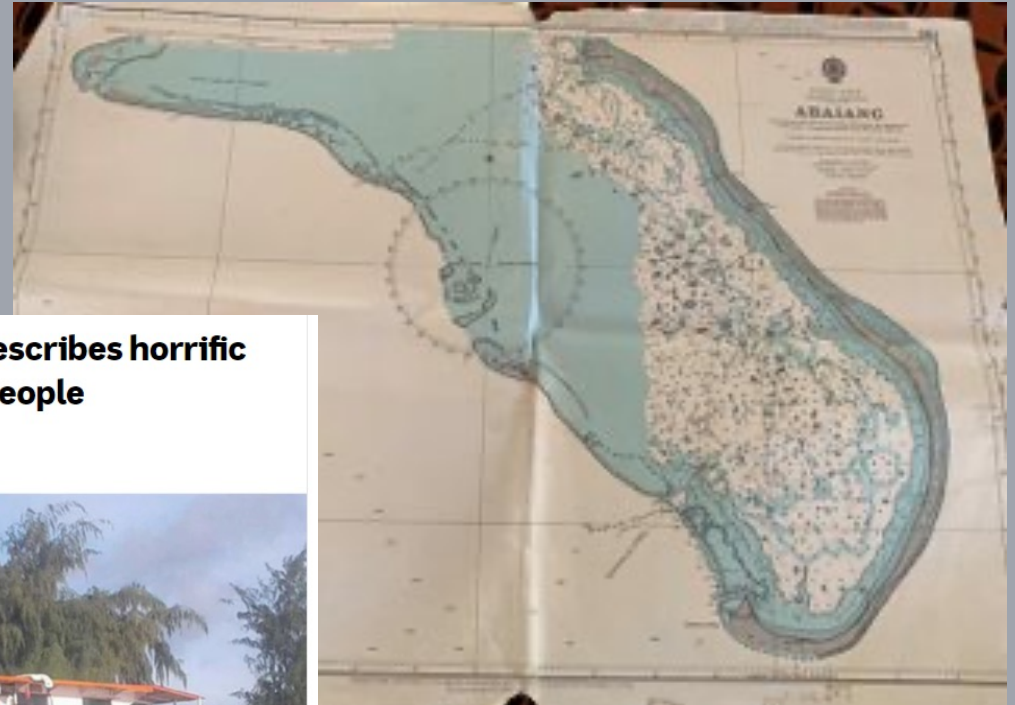
Kiribati ferry disaster report describes horrific moments before deaths of 95 people

Pacific Beat / By Liam Fox and Christine Zhou

Posted Mon 7 Oct 2019 at 5:11 pm, updated Tue 8 Oct 2019 at 1:33 am



The ferry that sunk off the coast of Kiribati had 102 people onboard. (ABC News: Supplied)





Photos used in the presentation are representative only.



Photos used in the presentation are representative only.

Gilbert Island Group

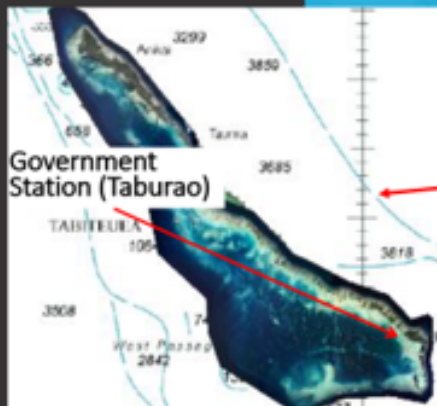
Abalang

(60km/5,000)



Tab-South

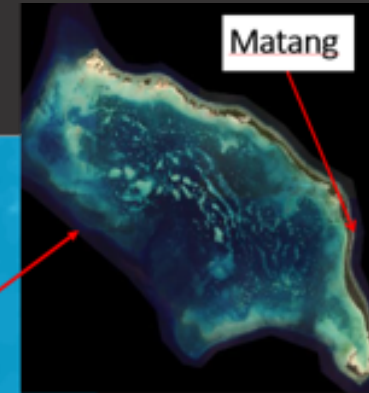
(400km/1,300)



Matang

Nonouti

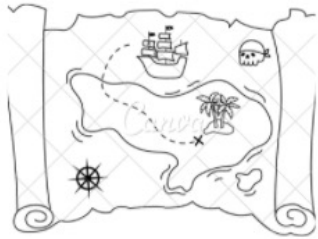
(280km/2,500)



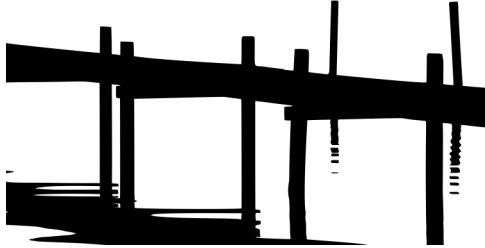
Boru

(450km/2,100)

Outputs



**Improve
inter-island
navigation**



**Install aids to
navigation and
build maritime
facilities**



Build capacity



Gender statistics

18-year-olds
that are
married
20%

Women
represented in
Parliament
6.5%

Women in
labour force
33%

Photos used in the presentation are representative only.

New trends, existing challenges



Observable trend
towards women
studying and working
in non-traditional
sectors



Challenges include
inappropriate
comments and sexual
jokes in the
workplace, feeling
unsafe on work trips,
lack of support
networks.

Photos used in the presentation are representative only.

Competition for employment and discriminatory attitudes pose challenges for women's employment in the project



Photos used in the presentation are representative only.

A photograph of an elderly woman with short, curly grey hair standing on a sandy beach. She is wearing a sleeveless top with a green and white checkered pattern and a blue skirt with a large green floral design. She is barefoot and standing next to a large, dark, tangled pile of seaweed or driftwood. In the background, there are palm trees and a clear blue sky with some white clouds. The ocean is visible in the distance.

68%
women
experience
physical and/or
sexual partner
violence in their
lifetime

Photos used in the presentation are representative only.

Forms of partner violence



**Physical
violence**

46%

**Sexual
violence**

47%

**Emotional
abuse**

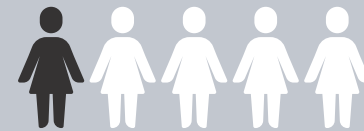
90%

**Controlling
behaviours**

Non-partner violence

10%

experience sexual
violence



experienced sexual
abuse as a child

**Kiribati is a source
country for sex
trafficking**



Photos used in the presentation are representative only.

Effective gender mainstreaming



Gender Action Plan

Improves women's access to services and opportunities

Promotes safe job and professional development



World Bank GBV Risk Assessment Tool

Moderate risk category

GBV Framework to be developed and implemented



Risk mitigation

Code of Conduct, training, gender-responsive infrastructure design, strategies and IEC



Response

Referral system, training for police, health staff and counsellors, awareness-raising on GBV, and GRM



Photos used in the presentation are representative only.