

**Protecting
forests with
landscape
management
approaches and
agroforestry
management
strategies in the
Cocoa &
Cinnamon
Towards
Sustainable
Natural Welfare**

KPI :

- Maintaining animal conservation
- Maintaining regional balance (Priority Site)
- Maintaining the balance of Habitat (Lowland Forest & Small Island Ecosystem)
- Educating the community and stakeholders around the area in economic & environmental empowerment (Conservation Partnership & Stakeholder Collaboration)

Strategy

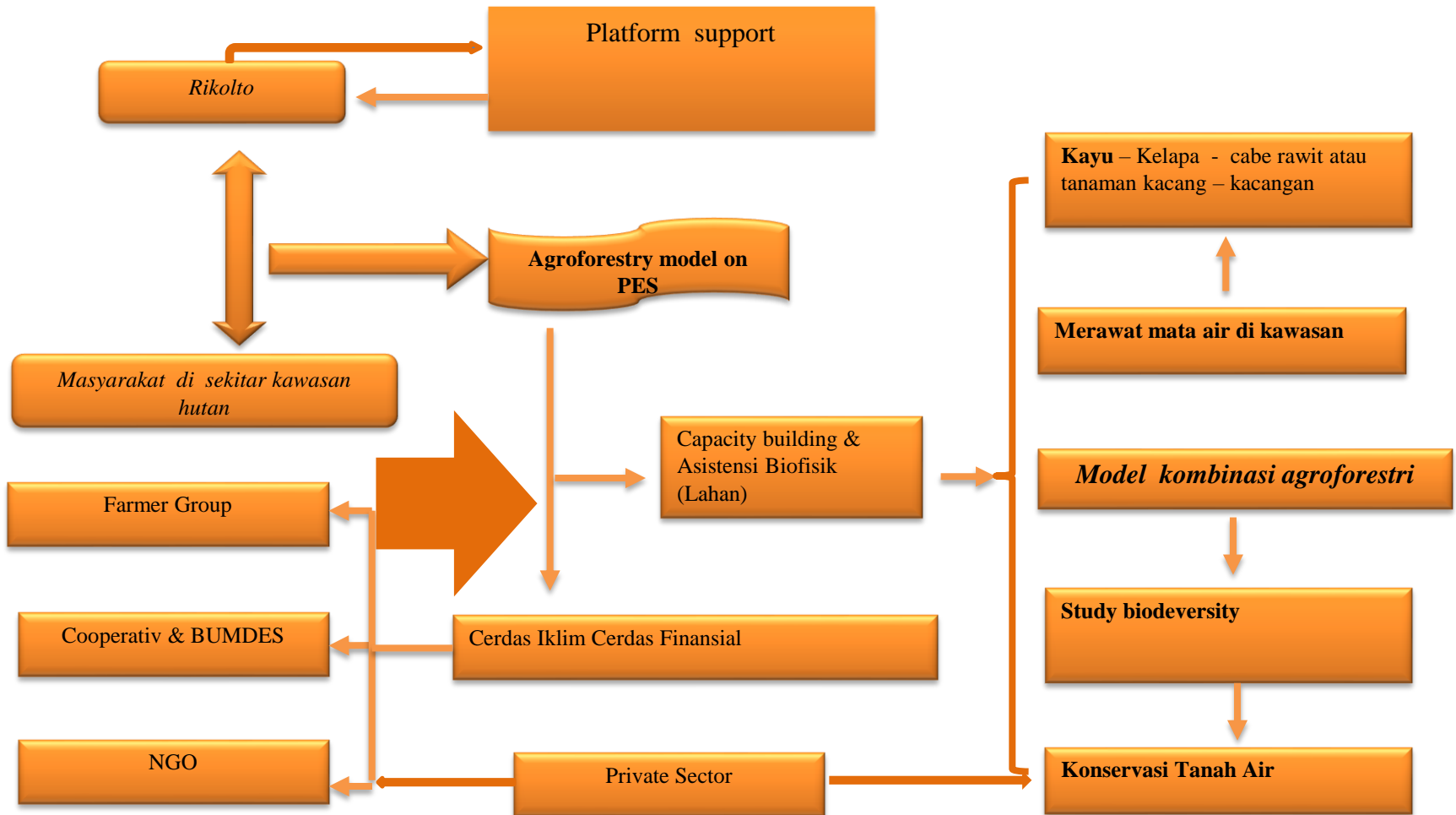
- Promote agroforestry for increasing farmers welfare as well as for improving environment
- Promote agroforestry as a strategy for adaptation and mitigation actions
- Developing viable models for community trees nurseries
- Improving smallholder cocoa & cinnamon production systems
- Understanding smallholder marketing systems and identifying ways to enhance farmers' marketing roles

Activity

Cocoa Agroforestry Model in Flores & North Luwu

- Preparing MoU of collaborative third parties (Rikolto-Gov-Private Sector)
- Set-up planning activities of village planning
- Developing an agroforestry model for cocoa
- Capacity building smallholder cocoa farmers
- Linking the smallholders farmers to cocoa buyer
- Measurement of carbon stock at plot level
- Support the analysis of tree-based carbon stocks in the area

Flowchart Program



Results in farming level



- *Optimizing sunlight penetration*
- *Minimizing humidity*
- *Maximizing air flow*
- *Minimizing pest & disease*
- *Stimulate flowering*
- *Maximizing yield*



Results in Ecosystem

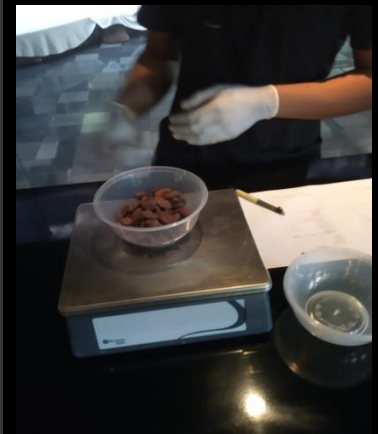
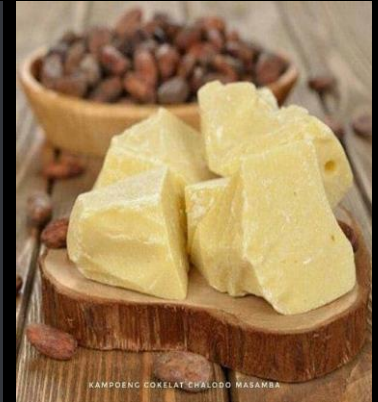


- Maintaining habitat in the program area in accordance with the original habitat. The original habitat includes sources of food, water and shelter.
- Maintaining human activity is the highest contributing factor to the destruction and loss of wildlife habitat (*3 main factors that are considered habitat change : human activities, wildlife and natural disasters.*)

Results in farmer level

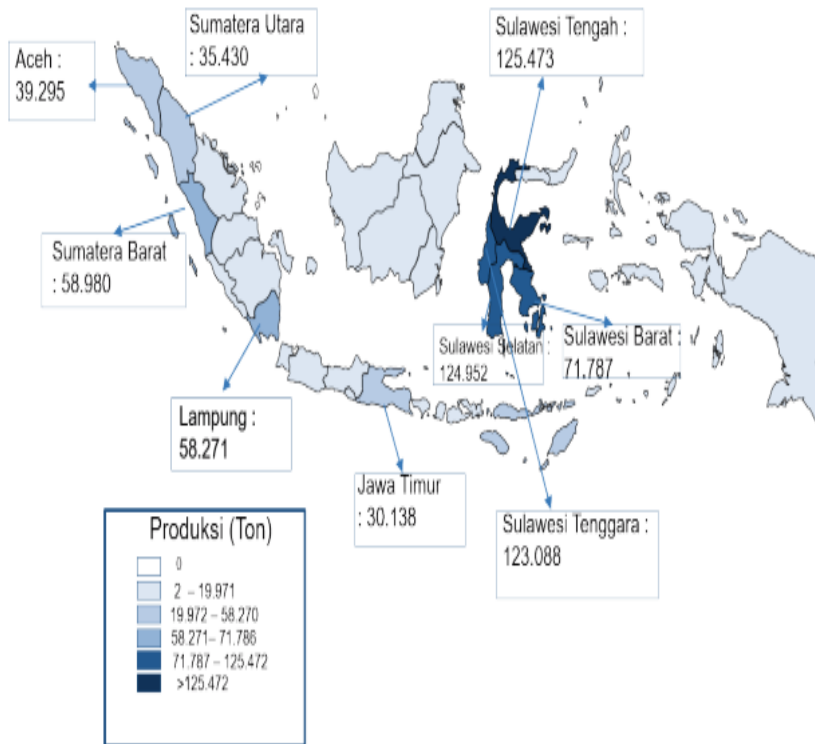


- *Additional income*
- *Increase knowledge*
- *More youth and female farmer participating in the program*
- *Networking*
- *Market appreciate*
- *Maximizing yield*

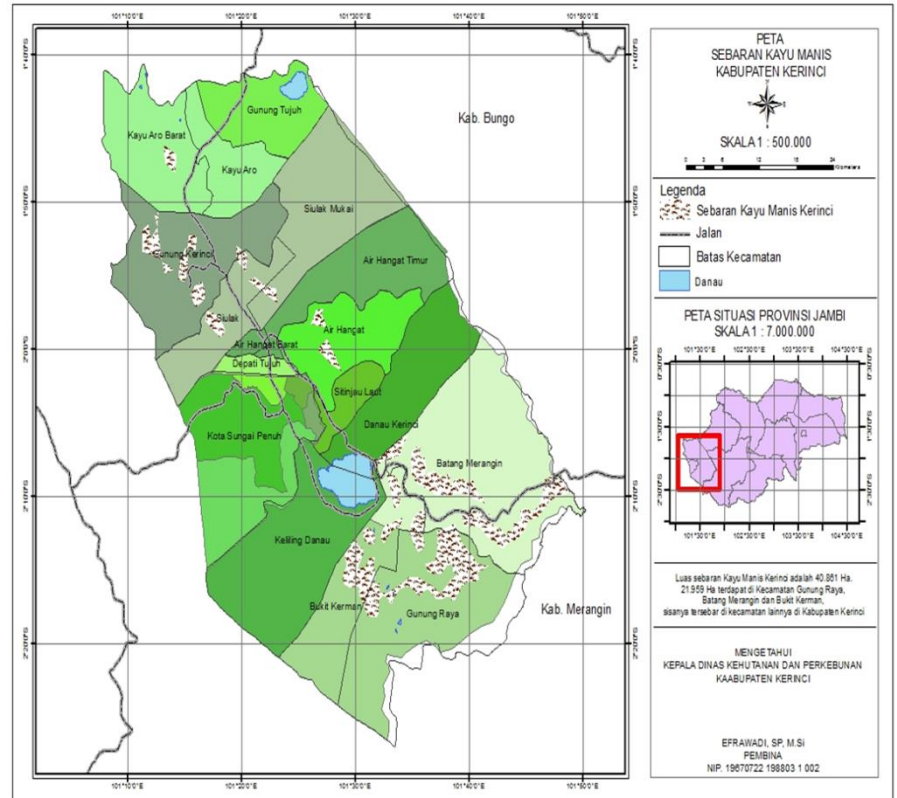


Area Production

Cocoa area intervention program:



Cinnamon area intervention program:



TERIMA KASIH

Check out:
www.rikolto.org/indonesia

peni.agustijanto@rikolto.org

Jl Tukad Unda VIII no 10
B, Denpasar, Bali