

The views expressed in this material are the views of the author/s and do not necessarily reflect the views or policies of the Asian Development Bank, or its Board of Governors, or the governments they represent. ADB does not guarantee the accuracy of the data included in this presentation and accepts no responsibility for any consequence of their use. The countries listed in this presentation do not imply any view on ADB's part as to sovereignty or independent status or necessarily conform to ADB's terminology.



Prioritizing the Safety and Wellbeing of Project Stakeholders

Felix Oku

Senior Social Development Specialist (Safeguards)

Safeguards Division

Sustainable Development and Climate Change
Department



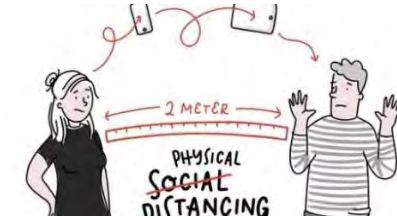
What Are the Issues?



What support do DMCs need?

Health & Safety Plans

What is our duty of care?



Update of H&S Plans
- Physical distancing
Hand washing,
enhanced worker
screening etc.
Site specific plans
needed



Management of risks to
workers, community,
vulnerable groups



Unanticipated Risks -
Potential infection and
spread of virus



What does the SPS Say?

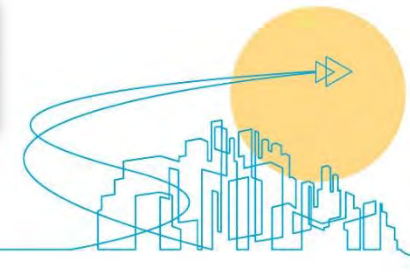
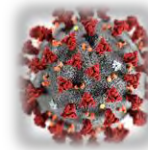
□ SPS Environment Policy Principle 10:

- Provide workers with safe and healthy working conditions and prevent accidents, injuries, and disease.
- Establish preventive and emergency preparedness and response measures to avoid, and where avoidance is not possible, to minimize, adverse impacts and risks to the health and safety of local communities.

□ Appendix 1, para 23: Where unanticipated environmental impacts become apparent during project implementation, the borrower will update the EIA and EMP to assess the potential impacts...and outline mitigation measures.



COVID 19 impacts are unanticipated impacts



What does the SPS Say?



10. Health and Safety

a. Occupational Health and Safety

40. The borrower/client will provide workers¹² with a safe and healthy working environment, taking into account risks inherent to the particular sector and specific classes of hazards in the borrower's/client's work areas, including physical, chemical, biological, and radiological hazards. The borrower/client will take steps to prevent accidents, injury, and disease arising from, associated with, or occurring during the course of work by (i) identifying and minimizing, so far as reasonably practicable, the causes of potential hazards to workers; (ii) providing preventive and protective measures, including modification, substitution, or elimination of hazardous conditions or substances; (iii) providing appropriate equipment to minimize risks and requiring and enforcing its use; (iv) training workers and providing them with appropriate incentives to use and comply with health and safety procedures and protective equipment; (v) documenting and reporting occupational accidents, diseases, and incidents; and (vi) having emergency prevention, preparedness, and response arrangements in place.



What does the SPS Say?

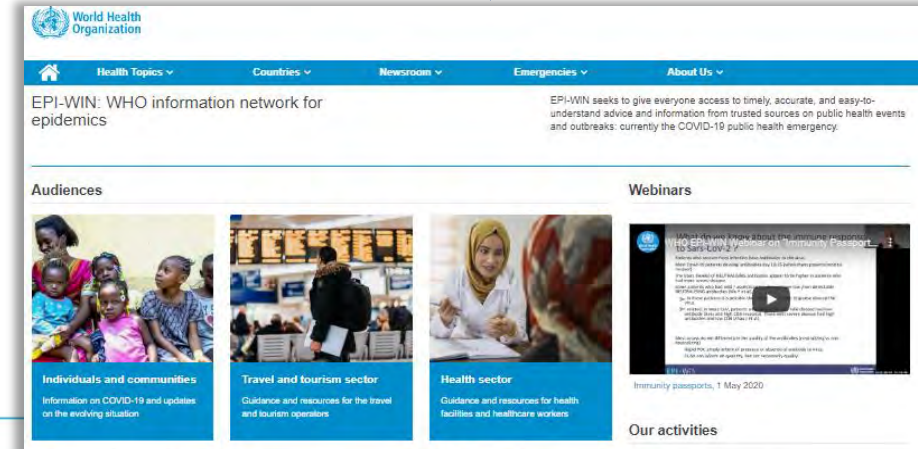
41. The borrower/client will apply preventive and protective measures consistent with international good practice, as reflected in internationally recognized standards such as the World Bank Group's *Environment, Health and Safety Guidelines* (footnote 7).



Environmental, Health, and Safety (EHS) Guidelines
GENERAL EHS GUIDELINES: INTRODUCTION



Environmental, Health, and Safety General Guidelines



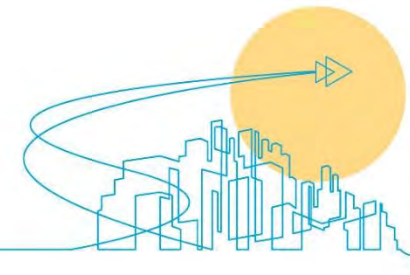
What does the SPS Say?



b. Community Health and Safety

42. The borrower/client will identify and assess the risks to, and potential impacts on, the safety of affected communities during the design, construction, operation, and decommissioning of the project, and will establish preventive measures and plans to address them in a manner commensurate with the identified risks and impacts. These measures will favor the prevention

43. The borrower/client will inform affected communities of significant potential hazards in a culturally appropriate manner. The borrower/client will be prepared to respond to accidental and emergency situations. This preparation will include response planning document(s) that addresses the training, resources, responsibilities, communications, procedures, and other aspects required to respond effectively to emergencies associated with project hazards. Appropriate information about emergency preparedness and response activities, resources, and responsibilities will be disclosed to affected communities.



What does the SPS Say?



Severity/Consequence

	Slightly harmful (1)	Harmful (2)	Extremely harmful (3)
Likelihood			
Highly unlikely (1)	Trivial risk (Score 1)	Tolerable risk (Score 2)	Moderate risk (Score 3)
Unlikely (2)	Tolerable risk (Score 2)	Moderate risk (Score 4)	Substantial risk (Score 6)
Likely (3)	Moderate risk (Score 3)	Substantial risk (Score 6)	Intolerable risk (Score 9)

Workplace Risk Assessment is Key

What is the hazard- COVID 19 Virus

How likely is the spread of disease at the workplace after lockdown?

What is the severity of impact should the hazard occur



Recommendation...

1. Portfolio Review and identify projects with **high exposure risks** to COVID 19

- ❖ Project sites with large workforce on site.
- ❖ Project sites with large labor force on site and host/surrounding communities
- ❖ Project sites with large worker accommodations on site or within host/surrounding communities.

- EXPOSURE RISK -

LOW

without frequent, close contact

MEDIUM

with close (< 1 m) frequent contact

HIGH

with high potential for close contact

2. Notify the PMU EA/IA/PIU in charge of the identified Projects about the need to review and prepare/update H&S Plans ahead of commencement of site works.



What Needs to be done?

INTERIM ADVISORY NOTE

Protecting the Safety and Well-Being of Workers and Communities from COVID-19

Health and safety risks from the coronavirus disease (COVID-19) pandemic can cause an additional burden on workers, local communities, and employers. To support its developing member countries in managing these risks, the Asian Development Bank (ADB) has prepared the following advisory note on publicly available international good practice. These preventive measures can be adapted for a variety of workplaces and country-specific contexts.¹

Transmission, spread, and infection are the greatest health and safety risks to projects and local communities. If left unmanaged, rising infection rates can result in project delays and job losses as well as overwhelm health care systems.

What can governments and companies (including enterprises of all sizes) do to prevent and manage COVID-19 risks?

To protect the health and safety of workers, as well as surrounding communities, it is recommended to conduct a workplace review and risk assessment for exposure to COVID-19. The nature of works, stage of implementation, location of the project activities, and status of the project (whether it is ongoing or under development) must be taken into consideration. In addition, vulnerable groups such as migrant workers as well as women, older workers, at-risk workers including those with underlying health conditions, or those with combined vulnerability factors (e.g., migrant women workers with underlying health conditions) who will also be disproportionately impacted, should be taken into account.²

The decision tree (Figure 1) outlines how to review and assess the adequacy of management plans and systems to prevent the spread of COVID-19 in the workplace.

Which sectors are more at risk from COVID-19?

COVID-19 may be more easily transferred among workers or service users and local communities in the following sectors and associated workplace activities:³

- Projects and businesses where there are a **large number of workers in close proximity with one another**, particularly where remote work is not feasible.
- Projects that involve **worker accommodation camps**, where physical distancing and robust hygiene measures may be more difficult to implement.
- **Health care providers** including hospitals, laboratories, clinics, dentists, ambulances, and pharmacies.

Figure 1: COVID-19 Decision Tree

```
graph TD; A[Start review of ongoing projects] --> B[Review and assess adequacy of risk assessment and relevant management plans and systems]; B --> C[Follow national regulations and health advice and refer to international good practice recommendations]; C --> D{Gap identified?}; D -- NO --> E[Continue to monitor workplace and workers to assess effectiveness of health and safety management plans]; E --> B; D -- YES --> F[Update all relevant project-related management plans and systems (critically contractors to update health and safety management plans) to address residual COVID-19 risks and impacts identified as gaps in the review process]; F --> E;
```

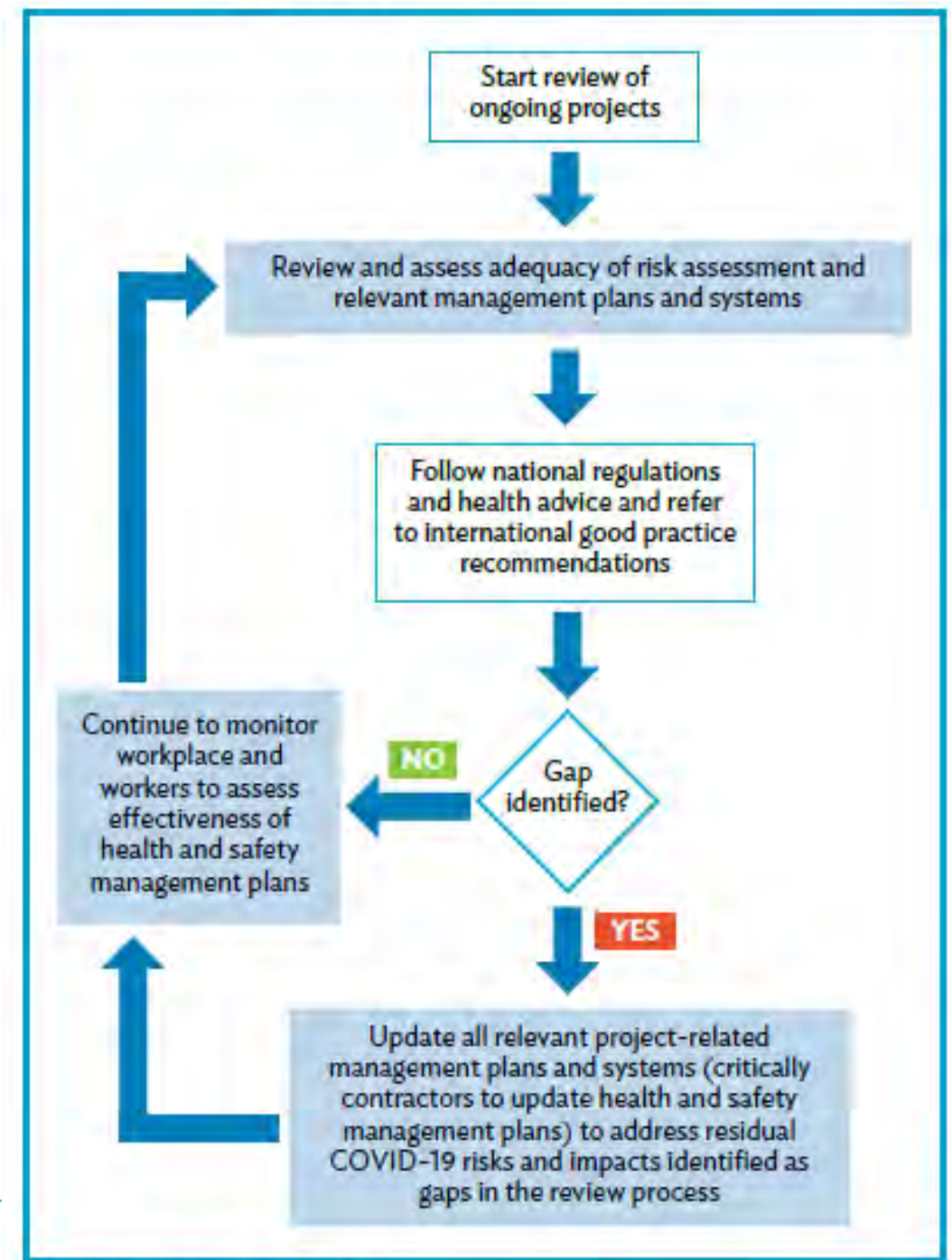
Source: Asian Development Bank.

¹ This advisory note may not cover all circumstances. It will remain a living document and will be updated regularly to reflect updates to international good practice to preventing and managing the COVID-19 pandemic at the workplace as listed in Annex.

² Migrant workers are faced with multiple impacts including the challenge of returning home, accessing food and medical assistance, and experiencing potential loss of income.

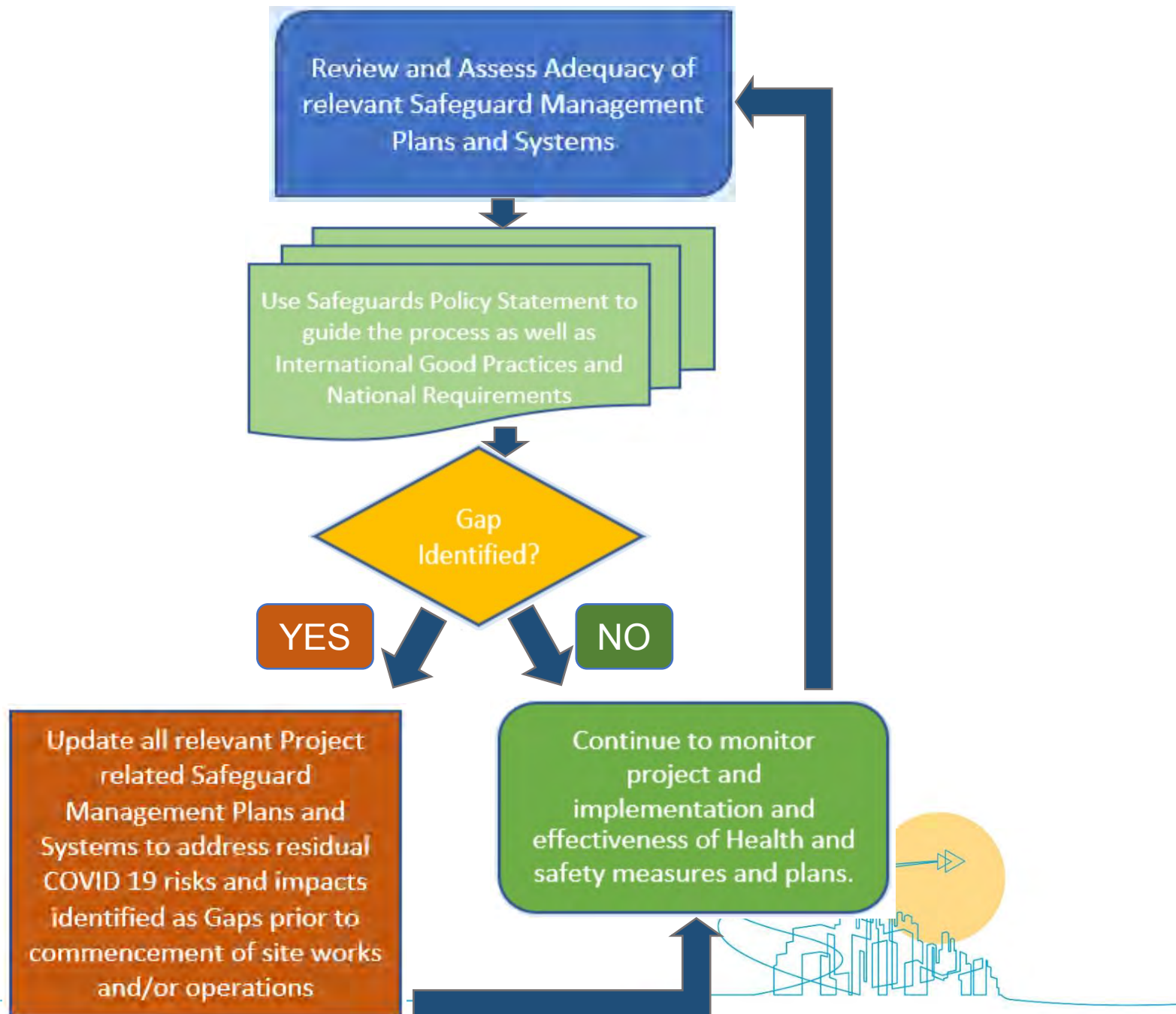
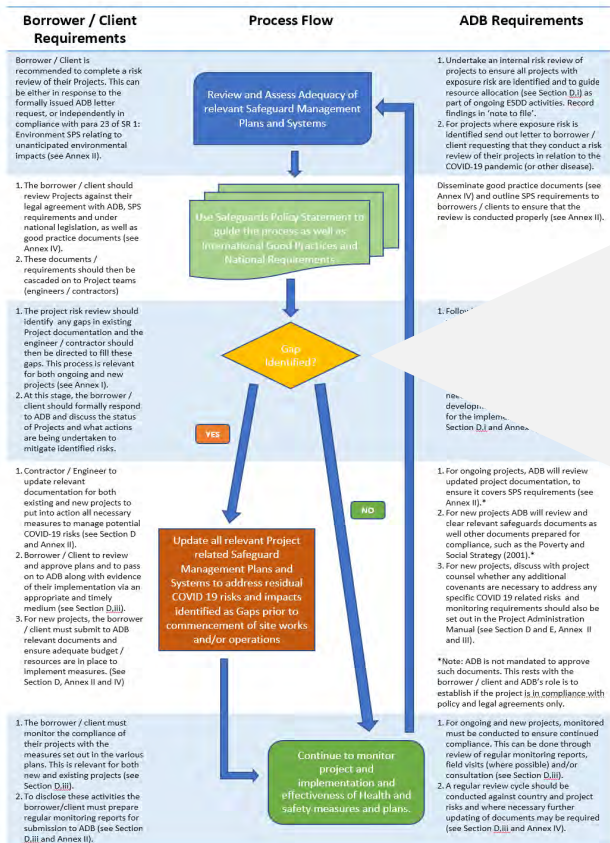
³ The list represents a selection and is not exhaustive.

<https://www.adb.org/sites/default/files/publication/614811/safety-well-being-workers-communities-covid-19.pdf>



What Needs to be done?

Annex I: Guidance on Project Review and Assessment Approach



Safeguard Management Plans

Adopt A Risk Based Approach

Environment Management Plan
[EMP]

Construction EMP

Operations
EMP

Health and Safety Management Plans

(including Emergency Response Plan)

Site Specific H&S
Plan

Work Specific H&S
Plan

Operations/
Maintenance and
Decommissioning
H&S Plan

What about Category “C” rated Projects??

National EIA and permitting Requirements

- Endorsed by ADB at Project approval.
- Will require high level update by **PMU/EA**–
- Note Disclosure Requirements following update

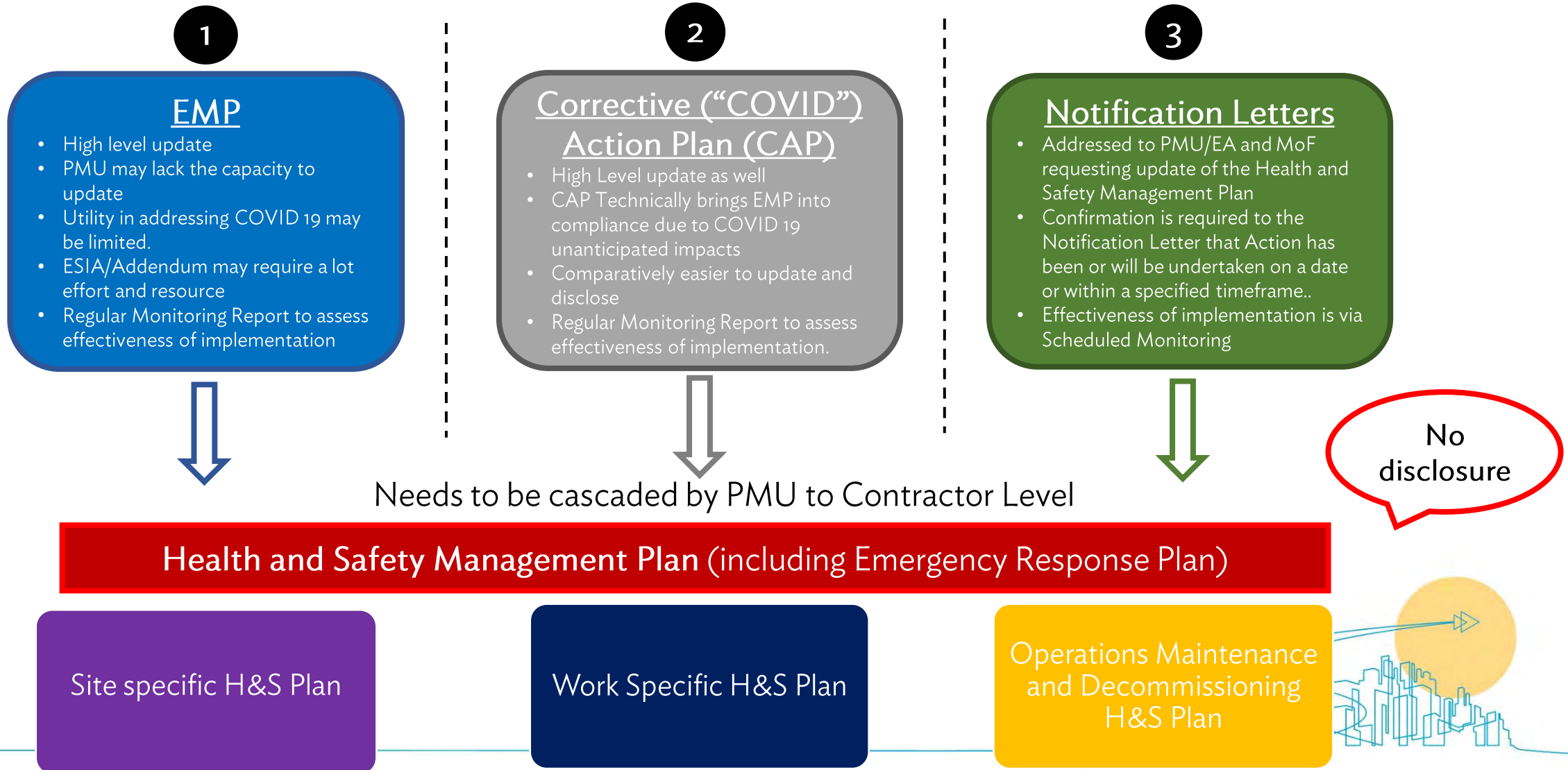
It is very important to ensure that these Plans have been updated by the **Contractor/Resident Engineer**

CAP and H&S Plan may be required following review & Risk Assessment

National Requirements

Options to Consider...

Depends on the stage of project implementation and nature of works



Support... Need to work together



Strengthening Safeguard Implementation in ADB Projects – SSIAP TA – 53125

Technical Support : OHS Consultant currently onboarding. Will provide support with development of Sector specific Guidance documents to help manage OHS issues on our projects including COVID 19.



Training and Webinar : We recognize some PMU's may need support to translate the International best practice guidance and information notes/posters into their local languages.



Reasonable Budget Support : We recognize some PMU's may need support to translate the International good practice guidance and information notes/posters into their local languages.

