

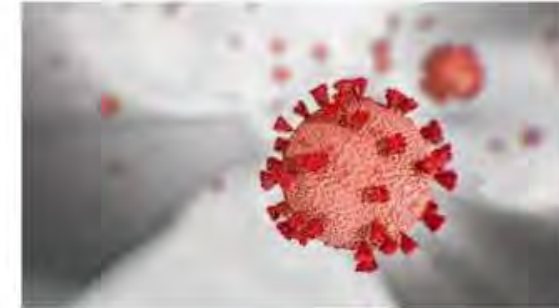
COVID-19

Eduardo P. Banzon
Principal Health Specialist
SDSC-HEA, SDCC

The views expressed in this material are the views of the author/s and do not necessarily reflect the views or policies of the Asian Development Bank, or its Board of Governors, or the governments they represent. ADB does not guarantee the accuracy of the data included in this presentation and accepts no responsibility for any consequence of their use. The countries listed in this presentation do not imply any view on ADB's part as to sovereignty or independent status or necessarily conform to ADB's terminology.

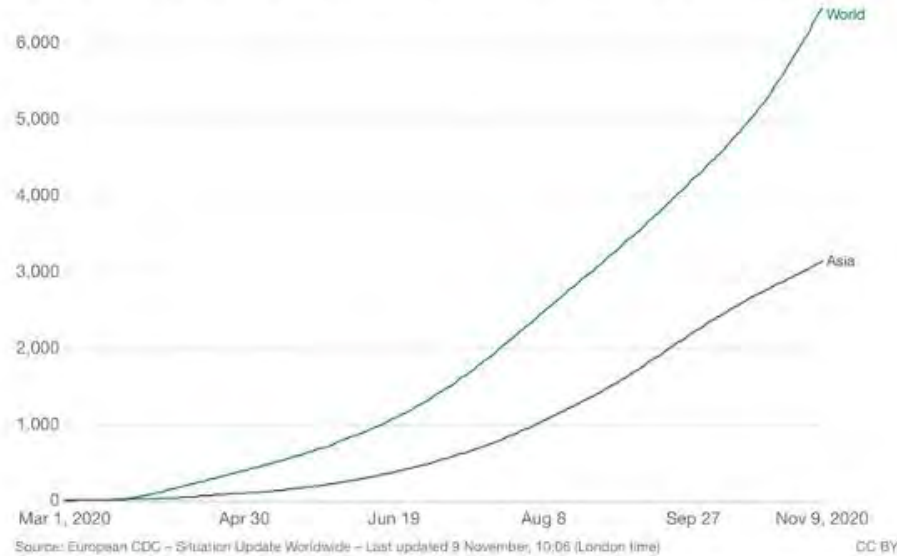


COVID 19 (as of 9 November 2020)



Cumulative confirmed COVID-19 cases per million people

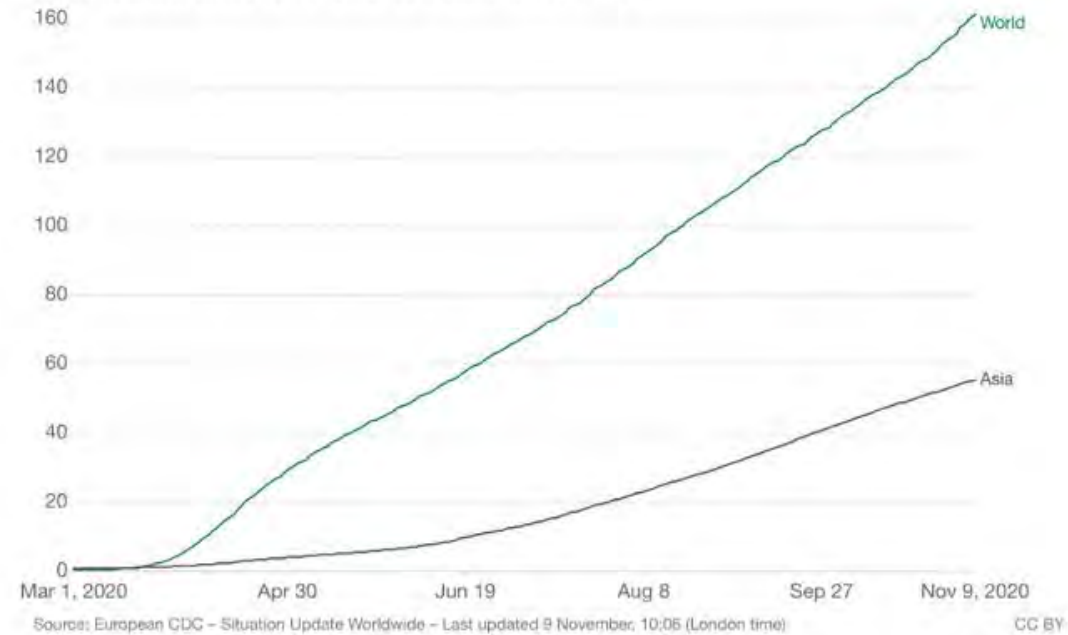
The number of confirmed cases is lower than the number of actual cases; the main reason for that is limited testing.



Countries Affected: **215**

Cumulative confirmed COVID-19 deaths per million people

Limited testing and challenges in the attribution of the cause of death means that the number of confirmed deaths may not be an accurate count of the true number of deaths from COVID-19.



[Graphs](#) - [Countries](#) - [Death Rate](#) - [Symptoms](#) - [Incubation](#) - [Transmission](#) - [News](#)

Coronavirus Cases:

51,239,384

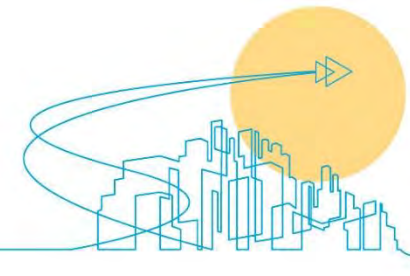
[view by country](#)

Deaths:

1,269,121

Recovered:

36,052,095



Understanding how the COVID-19 virus spreads

COVID-19 virus spreads mainly from person-to-person

- Between people who are in close contact with one another
- Through respiratory droplets produced when an infected person coughs, sneezes or talks.
- These droplets can land in the mouths or noses of people who are nearby or possibly be inhaled into the lungs.
- Some recent studies suggest that COVID-19 may be spread by people who are not showing symptoms.



Stopping the spread of the COVID-19 virus

- Avoiding close contact
- Keeping people from close contact
 - Hopefully, without closing down countries and economies
- Testing, Tracing, and Isolation (and Treatment)
- Vaccines



Individual actions (Avoid Cs, Do Ws)

- **Avoid the “three Cs”:**
 - closed spaces with poor ventilation
 - crowded spaces open to the public
 - close-contact settings putting people in range of flying droplets from speaking, coughing, and sneezing
- **Wear face masks (and face shields)**
- **Wash your hands**

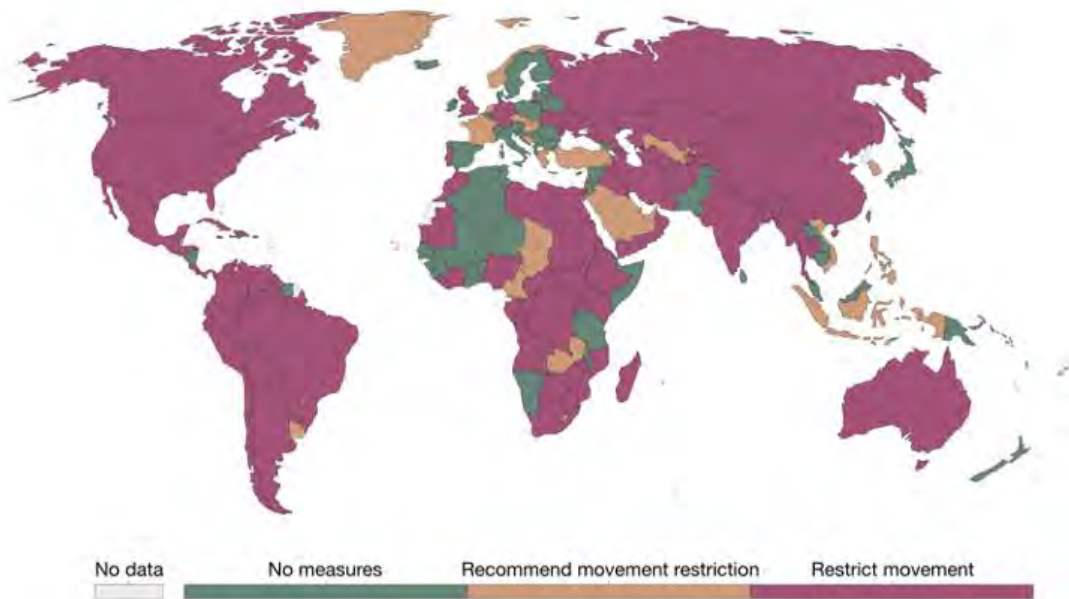


Government Actions

- Expand testing, tracing, isolation and access to treatment **and vaccines**
 - Paid leave to facilitate compliance to tracing and isolation
- Support individual actions
 - Mandate/support wearing of face masks and hand washing
- Prevent closed spaces, crowded spaces and close contact setting
 - Stay at home orders
 - Public transport closures or limitations
 - Workplace closures or limitations
 - Internal movement controls
 - Other mobility restrictions (international travel/ school closures, others)

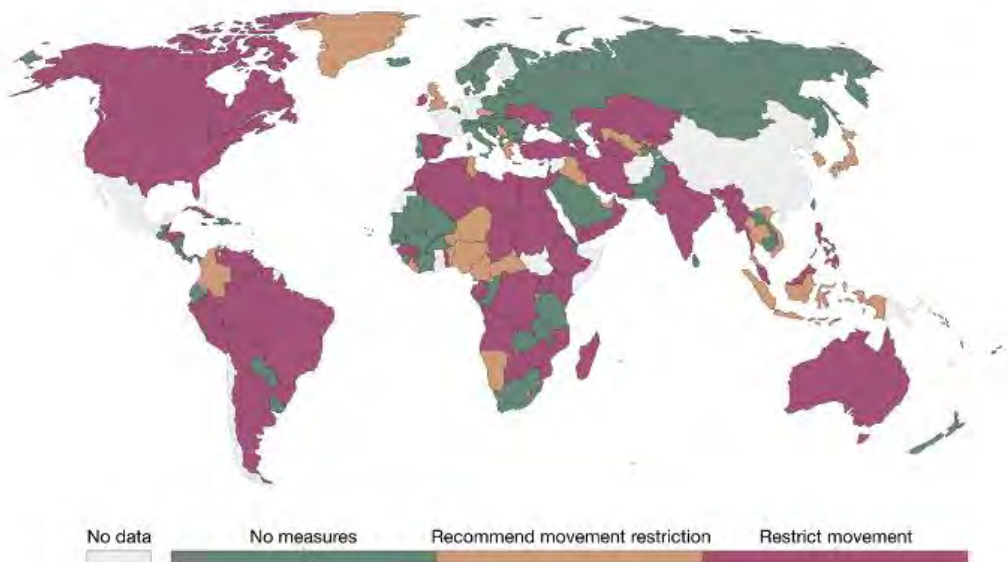


Restrictions on internal movement during the COVID-19 pandemic, Jun 30, 2020

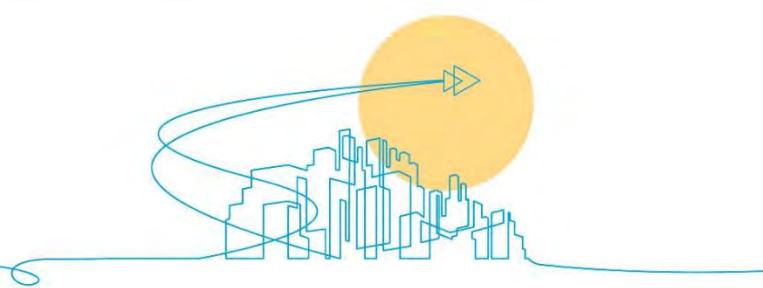


Source: Hale, Webster, Petherick, Phillips, and Kira (2020). Oxford COVID-19 Government Response Tracker – Last updated 21 October, 11:42 (London time)
Note: The policies shown may not apply at all sub-national levels. A country is coded as having these restrictions if at least some sub-national regions have implemented them.
OurWorldInData.org/coronavirus • CC BY

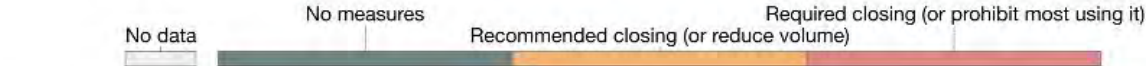
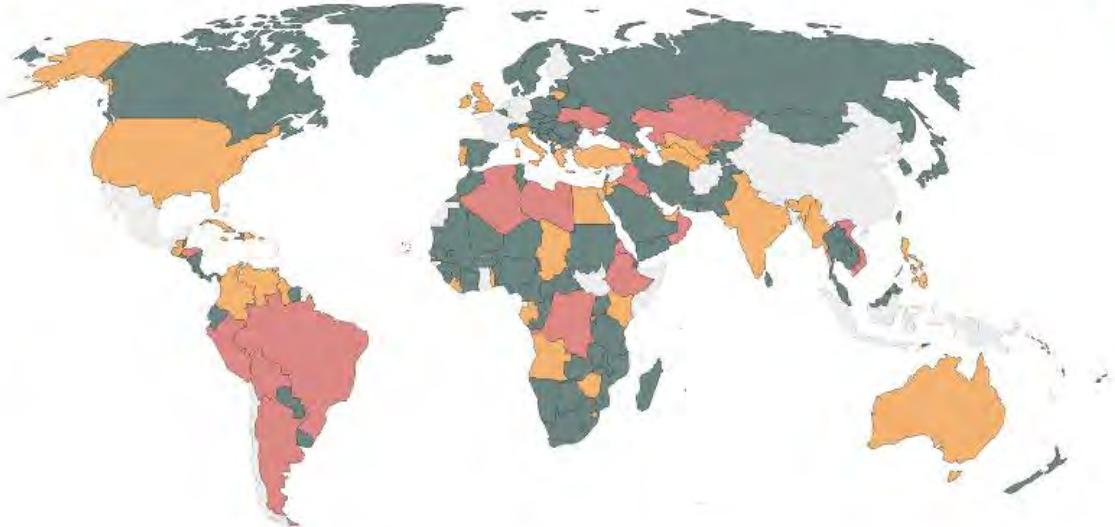
Restrictions on internal movement during the COVID-19 pandemic, Oct 21, 2020



Source: Hale, Webster, Petherick, Phillips, and Kira (2020). Oxford COVID-19 Government Response Tracker – Last updated 21 October, 11:42 (London time)
Note: The policies shown may not apply at all sub-national levels. A country is coded as having these restrictions if at least some sub-national regions have implemented them.
OurWorldInData.org/coronavirus • CC BY

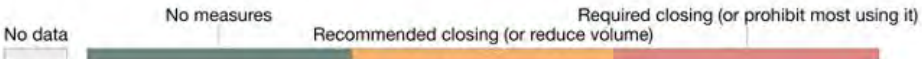
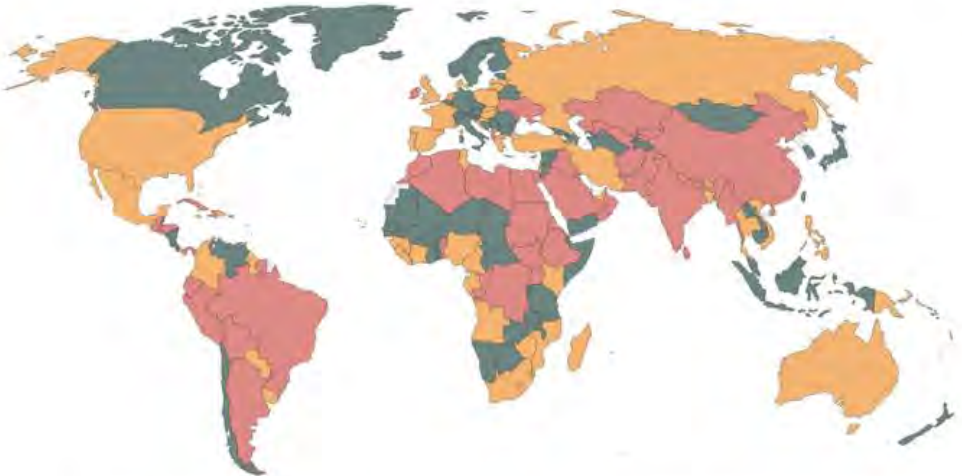


Public transport closures during the COVID-19 pandemic, Oct 21, 2020



Source: Hale, Webster, Petherick, Phillips, and Kira (2020). Oxford COVID-19 Government Response Tracker – Last updated 21 October, 11:42 (London time)
Note: The policies shown may not apply at all sub-national levels. A country is coded as having these restrictions if at least some sub-national regions have implemented them.
OurWorldInData.org/coronavirus • CC BY

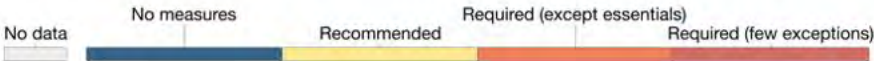
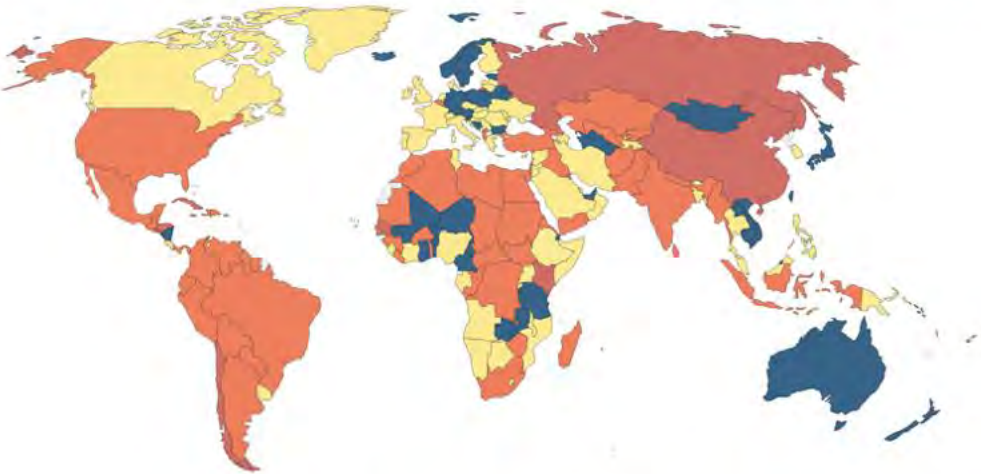
Public transport closures during the COVID-19 pandemic, May 31, 2020



Source: Hale, Webster, Petherick, Phillips, and Kira (2020). Oxford COVID-19 Government Response Tracker – Last updated 21 October, 11:42 (London time)
Note: The policies shown may not apply at all sub-national levels. A country is coded as having these restrictions if at least some sub-national regions have implemented them.
OurWorldInData.org/coronavirus • CC BY

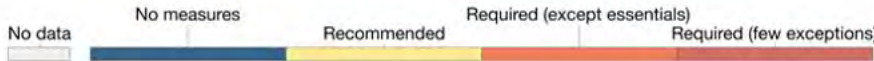
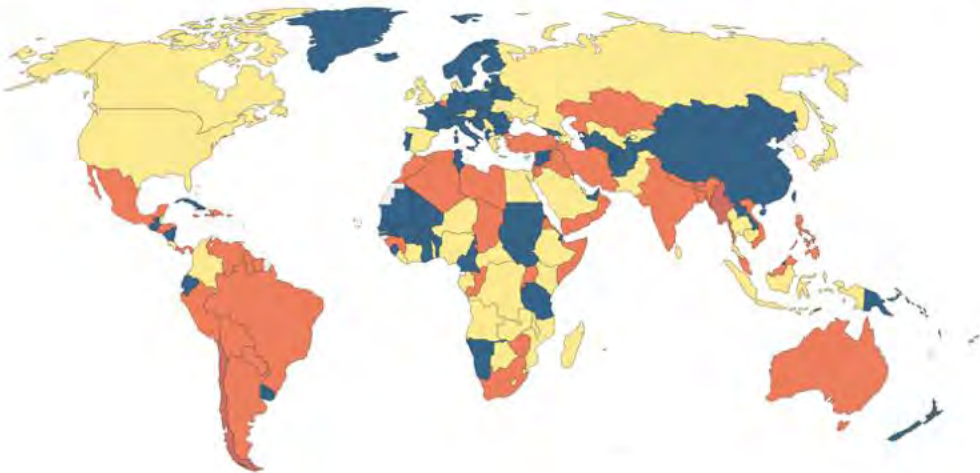


Stay-at-home requirements during the COVID-19 pandemic, May 31, 2020



Source: Hale, Webster, Petherick, Phillips, and Kira (2020). Oxford COVID-19 Government Response Tracker – Last updated 21 October, 11:42 (London time)
Note: There may be sub-national or regional differences in restrictions. The policy categories shown may not apply at all sub-national levels. A country is coded as having these restrictions if at least some sub-national regions have implemented them.
OurWorldInData.org/coronavirus • CC BY

Stay-at-home requirements during the COVID-19 pandemic, Oct 21, 2020

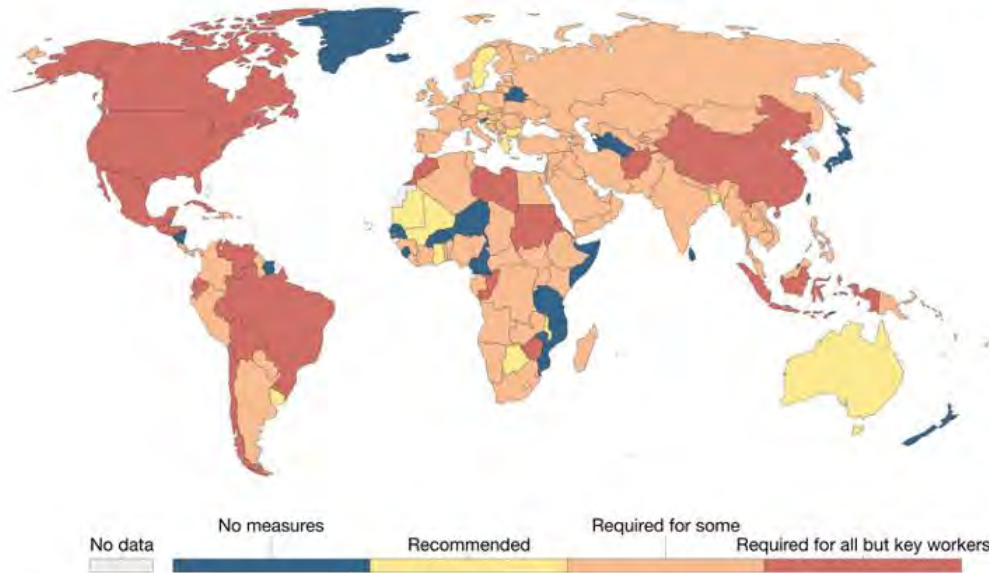


Source: Hale, Webster, Petherick, Phillips, and Kira (2020). Oxford COVID-19 Government Response Tracker – Last updated 21 October, 11:42 (London time)
Note: There may be sub-national or regional differences in restrictions. The policy categories shown may not apply at all sub-national levels. A country is coded as having these restrictions if at least some sub-national regions have implemented them.
OurWorldInData.org/coronavirus • CC BY



Workplace closures during the COVID-19 pandemic, May 31, 2020

Our World
in Data

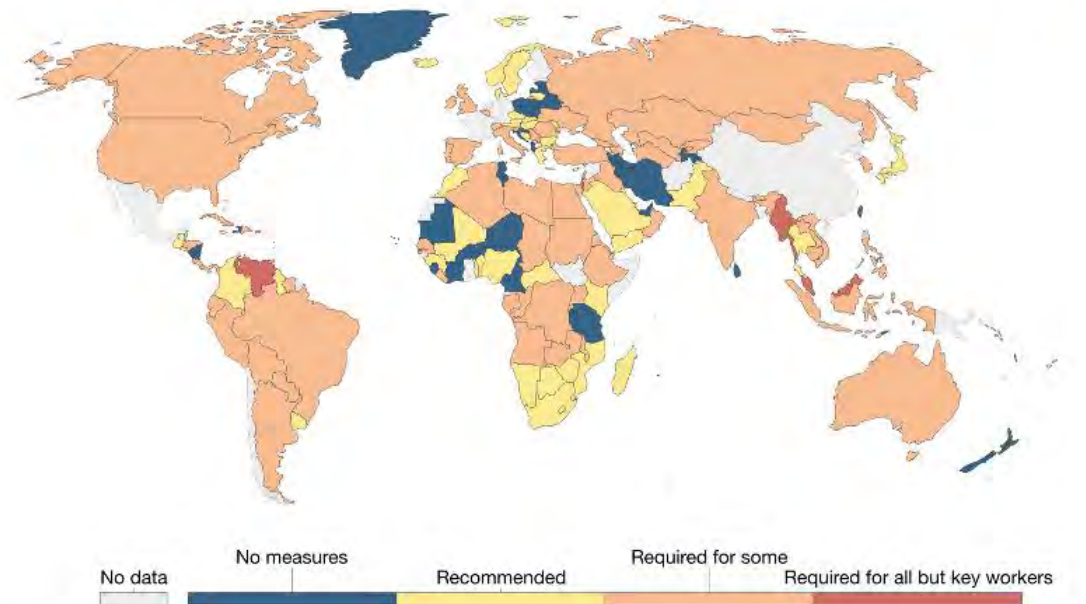


Source: Hale, Webster, Petherick, Phillips, and Kira (2020), Oxford COVID-19 Government Response Tracker – Last updated 21 October, 10:43 (London time)

Note: There may be sub-national or regional differences in policies on workplace closures. The policy categories shown may not apply at all sub-national levels. A country is coded as 'required closures' if at least some sub-national regions have required closures.
OurWorldInData.org/coronavirus • CC BY

Workplace closures during the COVID-19 pandemic, Oct 21, 2020

Our World
in Data



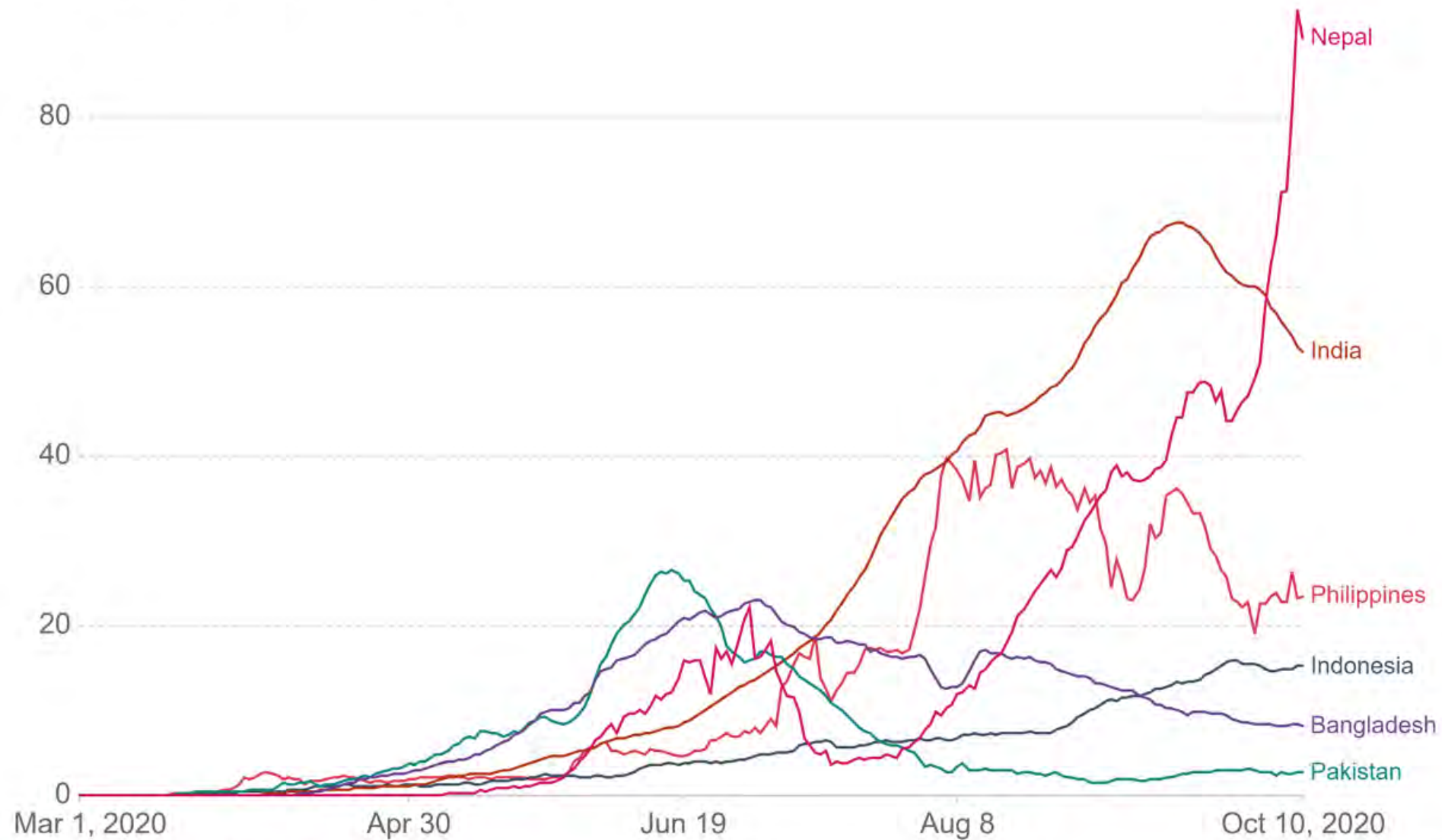
Source: Hale, Webster, Petherick, Phillips, and Kira (2020), Oxford COVID-19 Government Response Tracker – Last updated 21 October, 10:43 (London time)

Note: There may be sub-national or regional differences in policies on workplace closures. The policy categories shown may not apply at all sub-national levels. A country is coded as 'required closures' if at least some sub-national regions have required closures.
OurWorldInData.org/coronavirus • CC BY

Daily new confirmed COVID-19 cases per million people

Our World
in Data

Shown is the rolling 7-day average. The number of confirmed cases is lower than the number of actual cases; the main reason for that is limited testing.



Source: European CDC – Situation Update Worldwide – Last updated 10 October, 14:05 (London time)

CC BY



Source: Financial Times analysis of data from the European Centre for Disease Prevention and Control, the Covid Tracking Project, the UK Dept of Health & Social Care and the Spanish Ministry of Health.
Data updated October 10 2020 4.31pm BST. Interactive version: [ft.com/covid19](https://www.ft.com/covid19)

FINANCIAL TIMES