

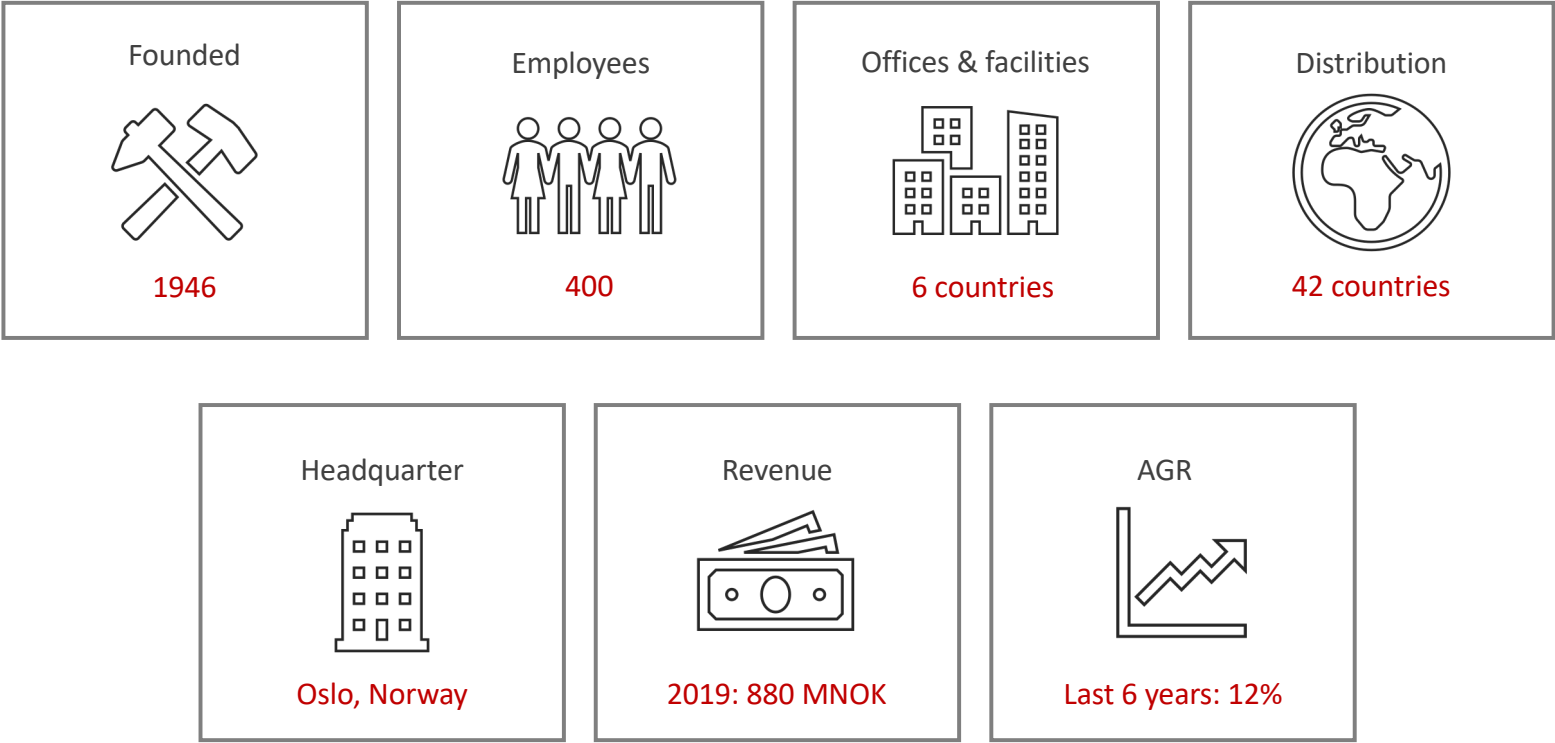


Moving the world forward
by optimizing the use of energy

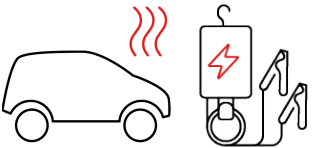
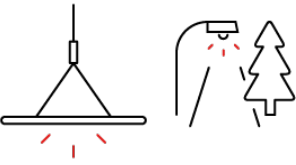

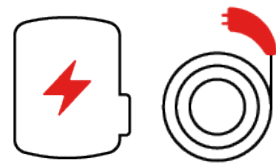
Mikael Nilsson, Sales & Market Manager, Export Market

This is not an ADB material. The views expressed in this document are the views of the author/s and/or their organizations and do not necessarily reflect the views or policies of the Asian Development Bank, or its Board of Governors, or the governments they represent. ADB does not guarantee the accuracy and/or completeness of the material's contents, and accepts no responsibility for any direct or indirect consequence of their use or reliance, whether wholly or partially. Please feel free to contact the authors directly should you have queries.

At a glance

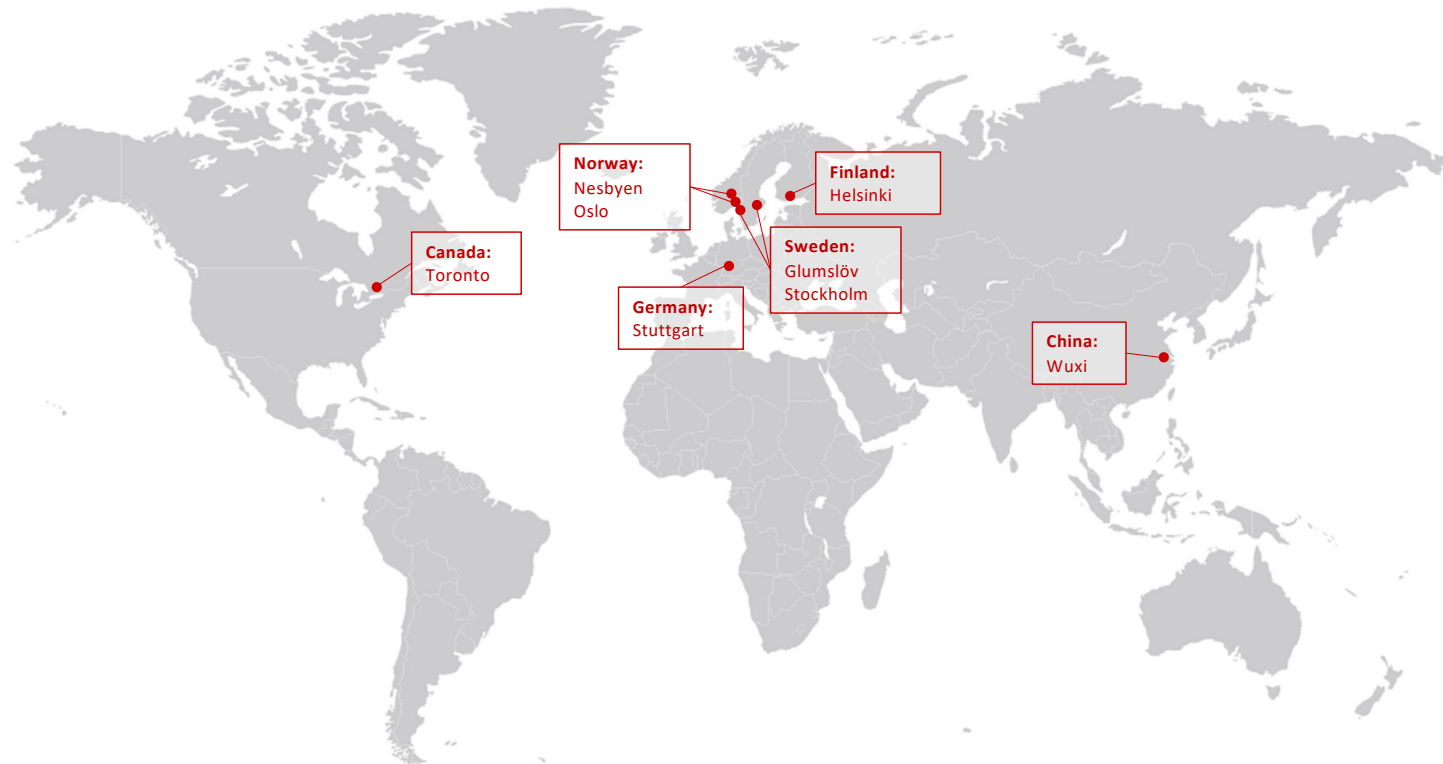


Business Units

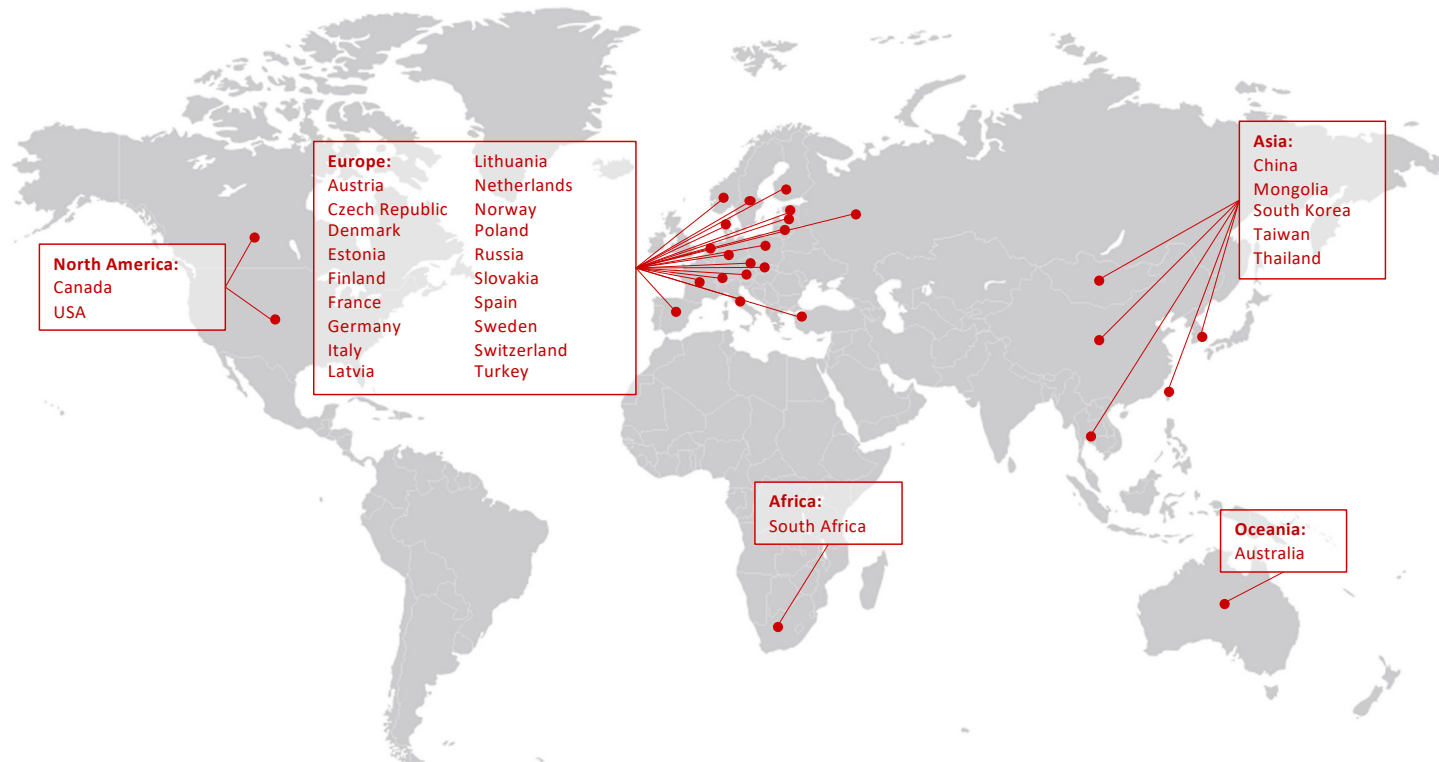
<p>Auto & Industry</p> 	<p>Lighting</p> 	<p>Digital</p> 	<p>e-mobility</p> 
<ul style="list-style-type: none">• Electrical preheating• Charging & power supply• Security	<ul style="list-style-type: none">• Interior/exterior• Outdoor & street• Industry	<ul style="list-style-type: none">• CloudCharge (App & Back-end system)• PLOT - Mileage log• DEFA Link - cabin control• DEFA Link – control of electrical preheating• Security & tracking	<ul style="list-style-type: none">• EV charging stations and poles• EV charging cables• Cloud Link Units (CLU)



Offices & facilities



Distribution



Quality and HSE management certificates



ISO 9001
Quality Management



ISO 14001
Environmental
Management



OHSAS 18001
Health and Safety
Management



IATF 16949
Automotive Quality
Management

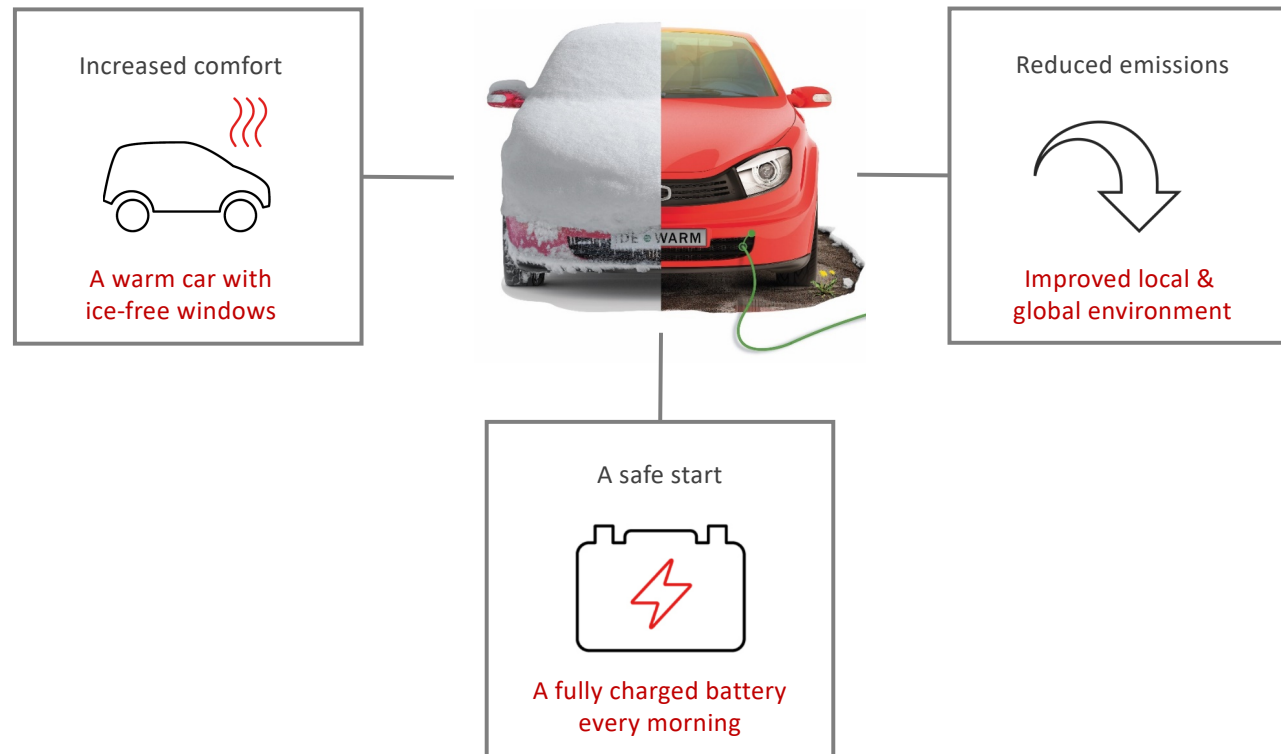




We are the worldwide leader in electrical preheating systems

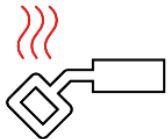


Value proposition



Facts & figures

Universally adopted



30M heaters installed
300 000 each year

Market share



70% in Nordic
countries

Expansion



Entering markets
in China & Canada

Environment



Up to 71% reduction
in harmful emissions



Segments / Target groups

PV
Personal
Vehicles



LCV
Light Commercial
Vehicles



SV
Specialty
Vehicles



HD
Heavy Duty
Vehicles



RV
Vehicles



Agricultural
Vehicles



Product offering

MiniPlug Xtreme



- Tolerates extreme conditions
- Resistant to chemicals
- Designed durability
- High quality
- Safe
- Rated current 16A
- Multiple lengths

Termini



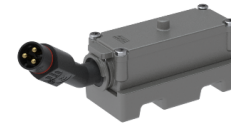
- Small size
- Fits in all cars
- PTC technology
- 2 safety fuses, double insulated
- 230V PTC element, 12V fan high speed motor
- Long lifespan and 5 years warranty
- Power from 1000-2100W

MultiCharger 1205R



- Easy to install, flexible cables
- Switch mode technology
- Short-circuit protection
- Wrong polarity protection
- Temperature compensated charging
- Relay function, 2 outputs

PTC heater



- Uniform PTC contact heater
- Engine adapted socket
- Rotatable PlugIn connector
- Engine adapted bracket
- Power output 400-500W
- Self regulating PTC element
- Thermo-fuse protected
- Short installation time
- Reduced TTM



Thank you!



