



Asia and the Pacific Transport Forum 2020

Towards a more sustainable new normal for the transport sector

Bambang Susantono

Vice-President for Knowledge Management and Sustainable Development
Asian Development Bank

The views expressed in this presentation are the views of the author/s and do not necessarily reflect the views or policies of the Asian Development Bank, or its Board of Governors, or the governments they represent. ADB does not guarantee the accuracy of the data included in this presentation and accepts no responsibility for any consequence of their use. The countries listed in this presentation do not imply any view on ADB's part as to sovereignty or independent status or necessarily conform to ADB's terminology.





ADB mapped possible future trends

Trend 1: Demand returns on public transport

Demand on public transport returns to “pre-pandemic” levels

Factors:

- Virus is under control and no reason to avoid Public Transport

OR:

- Staying home is not an option for economic reasons.
- High proportion of captive users on PT.
- Lack of viable alternatives (e.g. absence of NMT facilities and connectivity).

Trend 2: Shifts to active transport modes (walk and cycle)

Travel mode shifts to walking, cycling, 2-3 wheelers. Less reliance on public transport. Private car mode may hold, or slightly suppressed through road space reallocation.

Factors:

- Availability of safe and viable alternatives on alternative NMT modes.
- Reallocation of road space to NMT modes.

Trend 3: Private Transport (Car and motorcycle) is king

There is unwillingness to return to public transport. Private transport is preferred.

Factors:

- Lack of public confidence in public transport (health concerns).
- Users can afford to switch to other modes (e.g private cars/motorcycles).
- Walking and cycling is not seen as adequate alternatives

Trend 4: Decreased travel demand

Work from home and e-commerce, and/or economic recession result in an overall lower frequency of travel.

Factors:

- Economic downturn reduces demand for passenger and freight transport
- Reasonably high level of digital inclusion and literacy (e.g availability of digital infrastructure and services)
- E-commerce penetration is high
- Type of occupations allow commuters to work remotely.



Trend 1: Demand returns on public transport

World **Australia, June**

Australia's most populous state doubles public transport capacity as coronavirus curbs ease

New Zealand, June

Covid-19: Kiwis' public transport use way above projections, and we're leading the world

www.news.cn
新华网
XINHUANET
Monday, July 27, 2020
Editions

PRC, July

Beijing allows public transport to operate at full capacity

Source: Xinhua | 2020-07-25 20:24:23 | Editor: huaxia

Malaysia, June

Public transport to run at full capacity



Trend 2: Shifts to active transport modes (walk and cycle)

Photo: Ted Aljibe/AFP via Getty Images



Trend 3: Private Transport (Car and motorcycle) is king

As lockdown ends, Manila's dirty air is back. It doesn't have to stay

by Mavic Conde on 19 June 2020



'Car-led' recovery increasingly apparent, Transport for London chief planner warns

5th June 2020

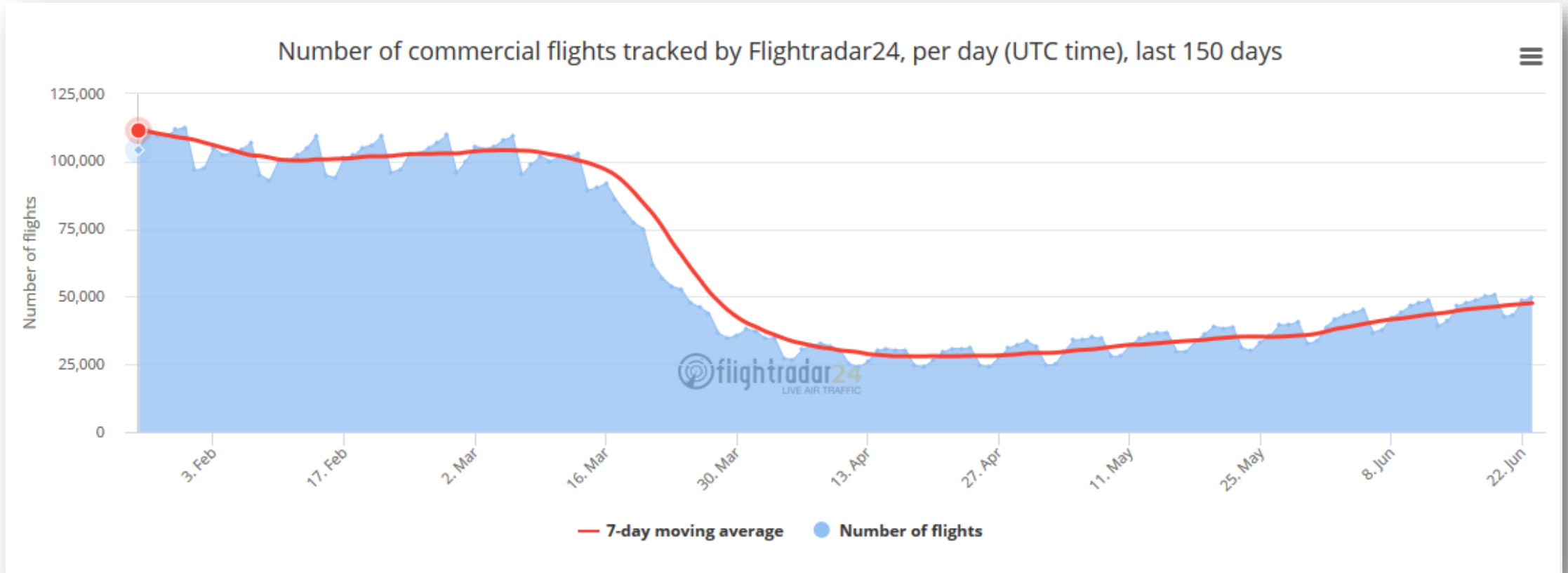
[Home](#) > [Life](#) > [News](#) >> [US Vehicle Traffic Has Rebounded To About 90% Of Pre-pandemic Levels As Commuters Steer Clear Of Public Transit, Report Says](#)

US vehicle traffic has rebounded to about 90% of pre-pandemic levels as commuters steer clear of public transit, report says



Trend 4: Decreased travel demand

- In urban settings, the increase in work from home arrangements, e-commerce, and delivery services.
- Far more severe: **the impact on air travel**





Kensington High Street's makeover

Street lamps are multifunctional: one lamp column provides lighting for traffic, lighting for pedestrians, a hanging basket and local directional signs or temporary signs for motorists

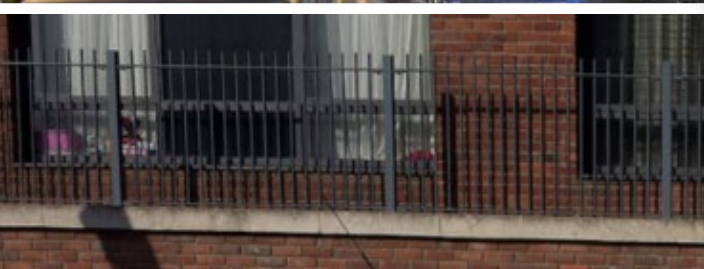
"Straight-across" pedestrian crossings have been installed

Central refuge helps people to cross the street where they wish and provides space for cycle parking

All nearside traffic signs are mounted on street lamp columns to reduce clutter

Traffic signs and signals are smaller than standard and "keep left" signs are mounted in hoops that are lit by uplighters

Virtually all guard rails have been removed





Current Actions

ADB's COVID-19 Response reached \$9.3 Billion by the end of July 2020

- Part of our \$20 billion total assistance package for COVID-19 response announced on 13 April
- Additional \$4.6 billion in cofinancing from development partners

[Home](#) > [Publications](#) >

Guidance Note on COVID-19 and Transport in Asia and the Pacific

Institutional Document | July 2020



Asian Development Bank releases 'bounce-back' report

A report by the Asian Development Bank (ADB) recommends that public transport operators adopt new hygiene measures and green technology to rebuild passenger confidence and encourage a return to services.



Thank you.

