

MINIMUM PUBLIC HEALTH STDS IN A COVID WORLD



This is not an ADB material. The views expressed in this document are the views of the author/s and/or their organizations and do not necessarily reflect the views or policies of Asian Development Bank, or its Board of Governors, or the governments they represent. ADB does not guarantee the accuracy and/or completeness of the material's contents, and accepts no responsibility for any direct or indirect consequence of their use or reliance, whether wholly or partially. Please feel free to contact the authors should you have queries.

A/P Jeremy Lim (ephlfyj@nus.edu.sg/ jeremyfylin@gmail.com)

MBBS, MPH, MRCS (Edin), MMed (Surg), FAMS

Co-Director, Global Health Program

Saw Swee Hock School of Public Health

National University of Singapore

July 1st 2020



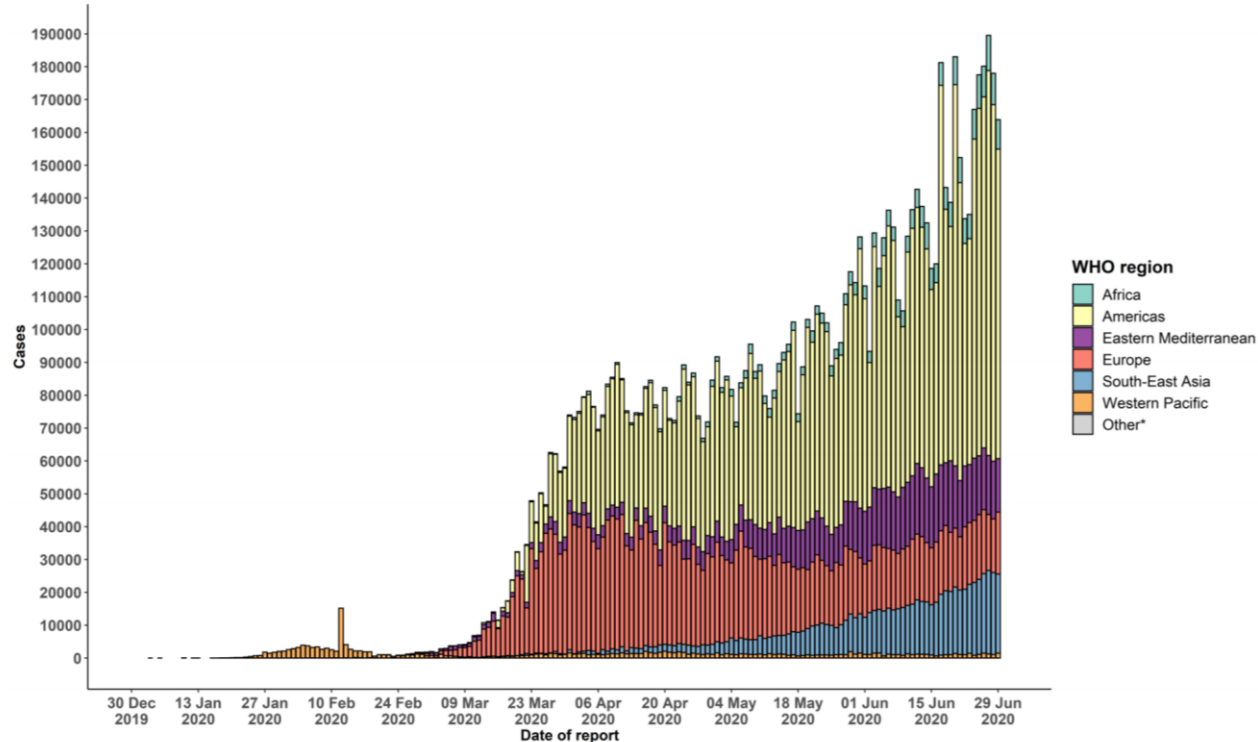
OVERVIEW



- COVID-19 Realities
- State of Science- Public Health Interventions
- Policy Objectives of Minimum Public Health Standards in Re-Opening
- 'Next Normal'- Living in a COVID World
- Cross-Border Movement
- Working Together across Borders

COVID-19 Realities- The Worst is not Over

Figure 2. Number of confirmed COVID-19 cases, by date of report and WHO region, 30 December through 30 June**



June
2020

WORLD ECONOMIC OUTLOOK UPDATE

A Crisis Like No Other, An Uncertain Recovery

Global growth is projected at -4.9 percent in 2020, 1.9 percentage points below the April 2020 World Economic Outlook (WEO) forecast. The COVID-19 pandemic has had a more negative impact on activity in the first half of 2020 than anticipated, and the recovery is projected to be more gradual than previously forecast. In 2021 global growth is projected at 5.4 percent. Overall, this would leave 2021 GDP some $6\frac{1}{2}$ percentage points lower than in the pre-COVID-19 projections of January 2020. The adverse impact on low-income households is particularly acute, imperiling the significant progress made in reducing extreme poverty in the world since the 1990s.

As with the April 2020 WEO projections, there is a higher-than-usual degree of uncertainty around this forecast. The baseline projection rests on key assumptions about the fallout from the pandemic. In economies with declining infection rates, the slower recovery path in the updated forecast reflects persistent social distancing into the second half of 2020; greater scarring (damage to supply potential) from the larger-than-anticipated hit to activity during the lockdown in the first and second quarters of 2020; and a hit to productivity as surviving businesses ramp up necessary workplace safety and hygiene practices. For economies struggling to control infection rates, a lengthier lockdown will inflict an additional toll on activity. Moreover, the forecast assumes that financial conditions—which have eased following the release of the April 2020 WEO—will remain broadly at current levels. Alternative outcomes to those in the baseline are clearly possible, and not just because of how the pandemic is evolving. The extent of the recent rebound in financial market sentiment appears disconnected from shifts in underlying economic prospects—as the June 2020 Global Financial Stability Report (GFSR) Update discusses—raising the possibility that financial conditions may tighten more than assumed in the baseline.

NIH

Director's Blog

Subscribe

Search The Blog

Q

NIH.gov | Blog Home | Director's Album

☐ Search Only Director's Album

To Beat COVID-19, Social Distancing is a Must

Posted on March 19th, 2020 by Dr. Francis Collins



gettyimages/SDI Productions

Recent Items

- White House Coronavirus Task Force Briefing at NIH June 11, 2020
- Searching for Ways to Prevent Life-Threatening Blood Clots in COVID-19 June 11, 2020
- Find Molecular Profiles of Severe COVID-19 Infections June 9, 2020
- Discussing the Need for Reliable Antibody Testing for COVID-19 June 4, 2020
- Will Warm Weather Slow Spread of Novel Coronavirus? June 2, 2020

Blog Archives

Select Month

▼

COVID-19 Occupational Risk Attributes

Annual Income

Lowest risk occupations

High pay, low risk

High pay, high risk

Highest risk occupations

Calculated using three physical job attributes from U.S. Dept of Labor

Physical Proximity (Daily) + Exposure to Disease and Infections (Daily) + Contact With Others (Daily)

Green = Healthcare related
Blue = Non-healthcare related

5M
2M
100K
10K
Number of people in occupation

Source: U.S. Dept of Labor, O*Net database *Excluding special needs *Except Legal, Medical, and Executive


visualcapitalist.com

Low Risk
Economists
Astronomers
Actuaries

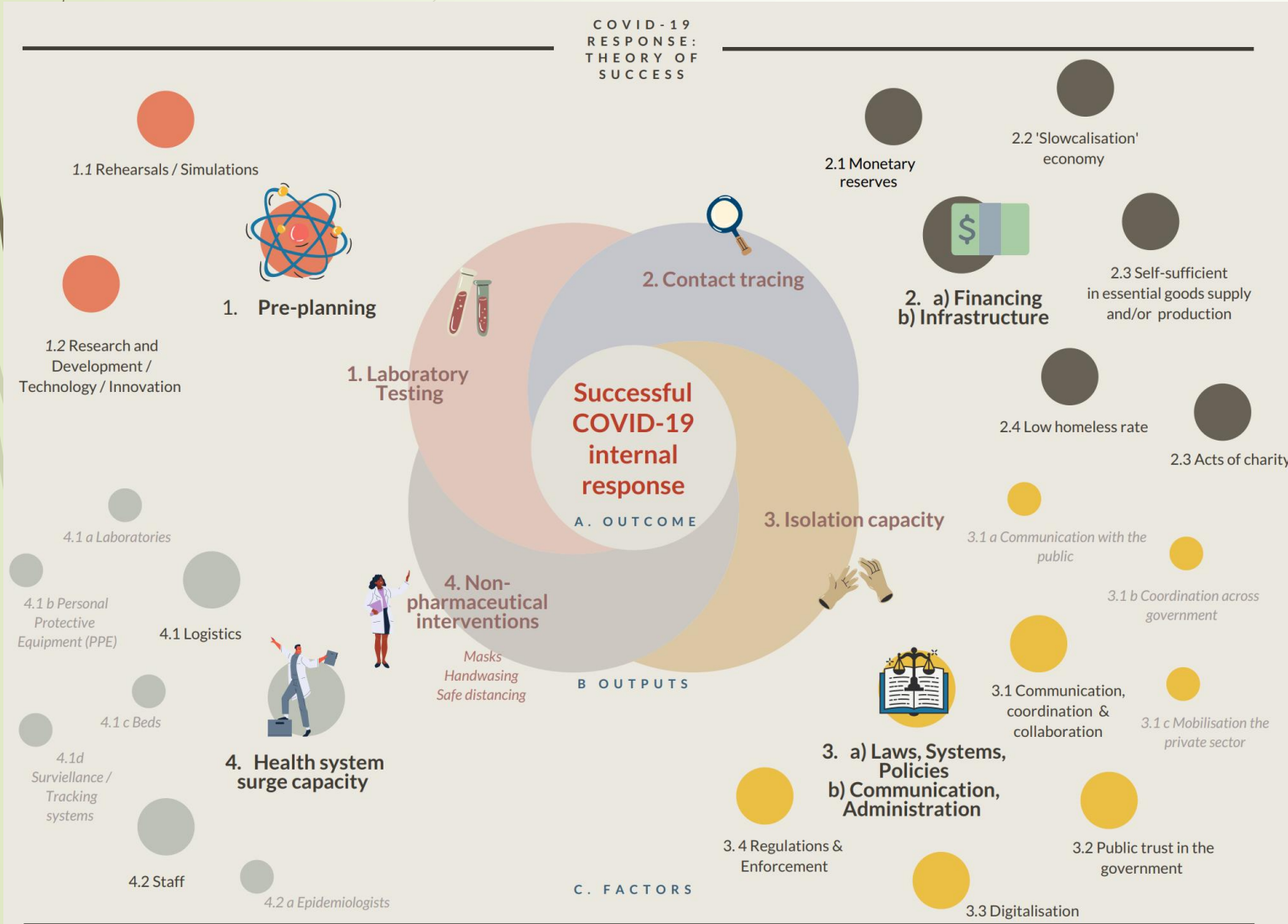
Healthcare*



Policy Objectives in a COVID World

- 
- Test, trace and isolate cases as soon as possible to avoid secondary cases and widespread community transmission
 - Prevent hospital and health system resources from being overwhelmed
 - Enable economic re-opening cautiously so that livelihoods can be maintained
 - Prepare citizens and businesses for the profound changes a COVID world necessitates

Critical Enablers to Less Dangerous Re-Opening



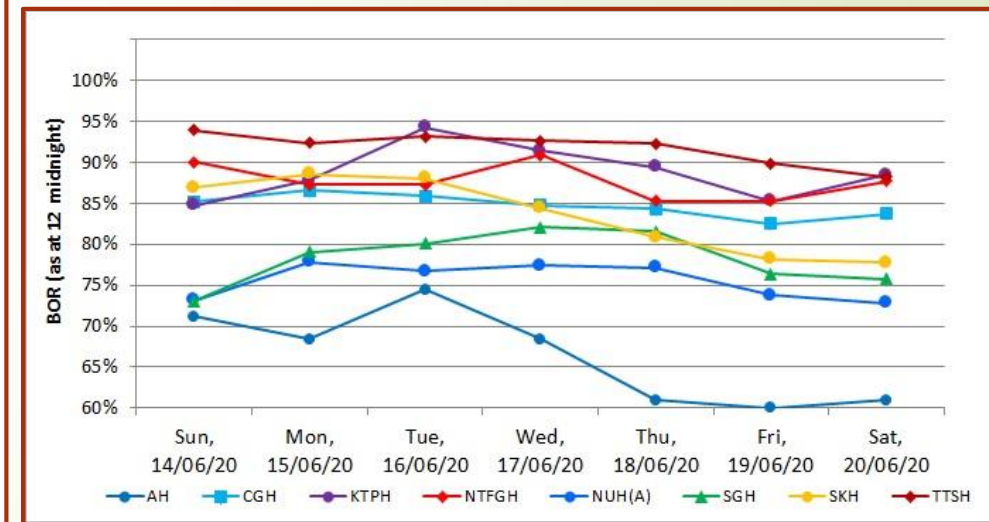
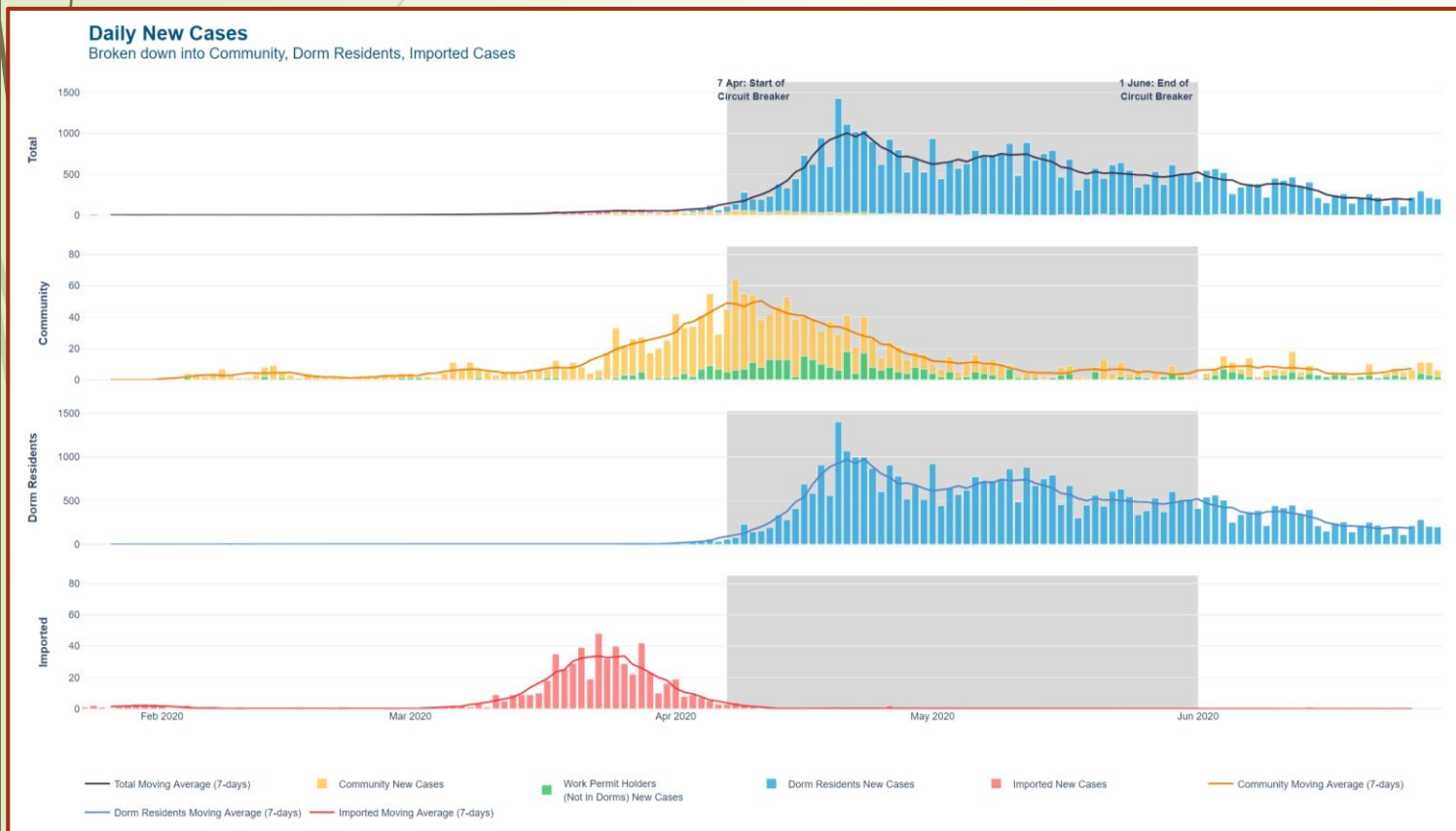
- Health Agencies
 - Testing, Tracing, Isolating
 - Health System Capacity
- Rest of Government
 - Supply Chain Effectiveness
 - Economic Rescue
 - Digital Enablement
 - Communications and Trust
 - Augment health agencies
- Public
 - Understanding and Willingness to Sacrifice for the Greater Good
 - Digital Enablement



How hard and how fast to hit depends on:

- **Baseline COVID disease burden and velocity of increases**
- **Health system utilization and surge capacity**
- **Management of at-risk populations**
- **Economic considerations**
- **Political support**

Government Tracking- Both Load and Capacity (Example of Singapore)



<https://covidsitrep.moh.gov.sg/>

Living in a COVID World- Optimistic Scenario

- Menu of public health interventions implemented and relaxed depending on COVID situation
- Tele-everything: Work From Home; E-commerce; Contactless Interactions; Home Delivery
- Automated Disinfection and other technological enablers
- Less travel; accept uncertainty of cross-border travel
- More greenery and nature... closer to home
- Acceptance of masks, hand washing, safe distancing
- Residents help and support each other including in psychological health
- Privacy and public health strike the right balance
- Vulnerable Communities will get more help



Urban design for post-pandemic world

People will be drawn to self-contained neighbourhoods and nature, architects say

Tan Hui Yee
Indochina Bureau Chief
in Bangkok

A new linear park across the Chao Phraya River will open in Bangkok later this month. Built on an abandoned rail structure, it is perhaps a fitting icon of how urban landscapes can be adapted for life in the Covid-19 era.

The pandemic triggered lockdowns that shuttered economic life but also spurred new thinking about urban design in South-east Asia. Access to sunlight, fresh air and greenery – elements often sacrificed in the race to pack more people and activity into precious real estate – will gain currency, say regional architects interviewed by The Straits Times.

People will gravitate towards self-contained neighbourhoods and seek to reconnect with nature to make up for the isolation brought on by remote working and e-commerce, they say.

Thai landscape architect Kotchakorn Voraakhom, whose firm helped create the new Bangkok skyspark, says public spaces will need a rethink as societies adjust to new physical distancing needs.

"It's not just about trying to add more public green space, but also to think about the 'wasted' space that we actually have in the city, and what can be done to it so that we can focus more on public health," she said during a recent preview of the skyspark.

Spanning 280m, the new facility connects two parks on the river banks of inner Bangkok. It features sheltered nooks, terraced lookout



Thai landscape architect Kotchakorn Voraakhom, whose firm helped create a new skyspark in Bangkok, says public spaces will need a rethink as societies adjust to new physical distancing needs in the era of Covid-19.
ST PHOTO
TAN HUI YEE

stir a yearning for connection. "The drawback of digitalisation is the possibility of increased cabin fever, where people don't feel connected and people feel even more isolated," said Goy Architects' principal architect Goy Zhenru. People might start to lean more towards building materials with natural properties, as it puts them at ease, she said. "People will start to say no, I want to feel well in the space, that wellness is more important," she said. "If I stay in a sterile box, I can live for a hundred years, but I don't see the point."

tanhy@sp.com.sg

Bangkok to open new skyspark



<https://str.sg/chaophraya>

'People will gravitate towards self-contained neighbourhoods and seek to reconnect with nature to make up for the isolation brought on by remote working and e-commerce'

'Next normal' - risk assessment, early detection of outbreaks, and micro-lockdowns



- Business and municipal disruptions will be a recurring theme
- Businesses will reinvent
- Neighborhoods will transform
- Cities will evolve in tandem
- Local government more and more important

How Victoria's coronavirus lockdown across 10 Melbourne postcodes will work

By Alicia Nally
Posted 2h ago, updated 2h ago



The suburbs of Maidstone and West Footscray are among those to go into lockdown from Thursday. (ABC News: Peter Healy)

Cross-Border Movements- Decision Factors



- EU Travel Advisory (30 June 2020)- Algeria, Australia, Canada, Georgia, Japan, Montenegro, Morocco, New Zealand, Rwanda, Serbia, South Korea, Thailand, Tunisia and Uruguay. China pending reciprocal access
- Factors considered
 - number of new cases over a 14-day period had to be "close to or below the EU average"
 - Countries also needed to have a "stable or decreasing trend of new cases over this period."
 - Reliable national data
 - Reciprocity

"I understand that some of us, including Indonesia, have started bilateral talks both with fellow ASEAN countries and with countries outside ASEAN regarding travel corridors. However, it is time for ASEAN, as a community, to think about ASEAN travel corridor arrangements," - President Joko "Jokowi" Widodo, Indonesia (26 June 2020)

"As a first step, we can explore the possibility of sectoral exemptions for travel restrictions such as medical tourism, or high-value economic visits," - Prime Minister Muhyiddin Yassin, Malaysia (26 June 2020)

Working Together across Borders

Launch of Singapore-China fast lane for essential travel

- Singapore and China have agreed to create a fast lane to facilitate essential business and official travel with six provinces/municipalities in China (Chongqing, Guangdong, Jiangsu, Shanghai, Tianjin, and Zhejiang).
- The fast lane will be launched on 8 June 2020 for travellers residing in Singapore and the six fast lane regions in China who need to make essential business or official travel between the two countries.
- In conjunction with Singapore's Safe Re-opening in the post-Circuit Breaker period, Singapore is exploring piloting fast lane arrangements with a few other countries and regions.
- Our top priority is to protect the lives, health and safety of Singaporeans. A progressive and calibrated reopening of our international border is a critical first step to take, in order to safeguard the lives and livelihoods of Singaporeans.

Application process

For outbound travellers:

- Singapore residents must be sponsored by a company or government agency in China, which will file an application on the applicant's behalf.
- Approved applicants will need to apply for visa from the PRC Embassy in Singapore.
- Applicants must also submit a health declaration.

For inbound travellers:

- China residents must be sponsored by a company or Singapore government agency which will file for a SafeTravel Pass on the applicant's behalf.
- Approved applicants to apply for visa if needed.
- Applicants will need to submit pre-trip health and travel history declarations via the SG Arrival Card (https://www.ica.gov.sg/enteringanddeparting/entry_requirements/e-arrival-card) within three days prior to the date of arrival.
- In the initial launch, applications will be limited to travellers sponsored by government agencies. Applications for company-sponsored travellers will open at a later date.

Pre-Departure and Post-Arrival Health Measures

Pre-departure, all travellers must:

- Take a COVID-19 swab test 48 hours before departure.
- Produce a SafeTravel Pass, negative COVID-19 test result, return air ticket and visa (if required) for pre-boarding checks.

Post-arrival, all travellers must:

- Undergo a COVID-19 swab test and remain isolated until test result is released.
- Adhere to a pre-declared controlled itinerary for the first 14 days of stay.
- Inbound travellers to Singapore will be required to use the TraceTogether app for the duration of their stay.

Outbound Travel

- Eligibility for travel, invitation by host country company/ organization- Essential Travel
- PCR test negative in home country within 48 hours of travel
- Repeat PCR test in country negative; isolation until then
- Controlled in-country itinerary, subject to digital tracking

Return to Home Country

- Repeat PCR test negative
- Stay Home Notice for 14 days

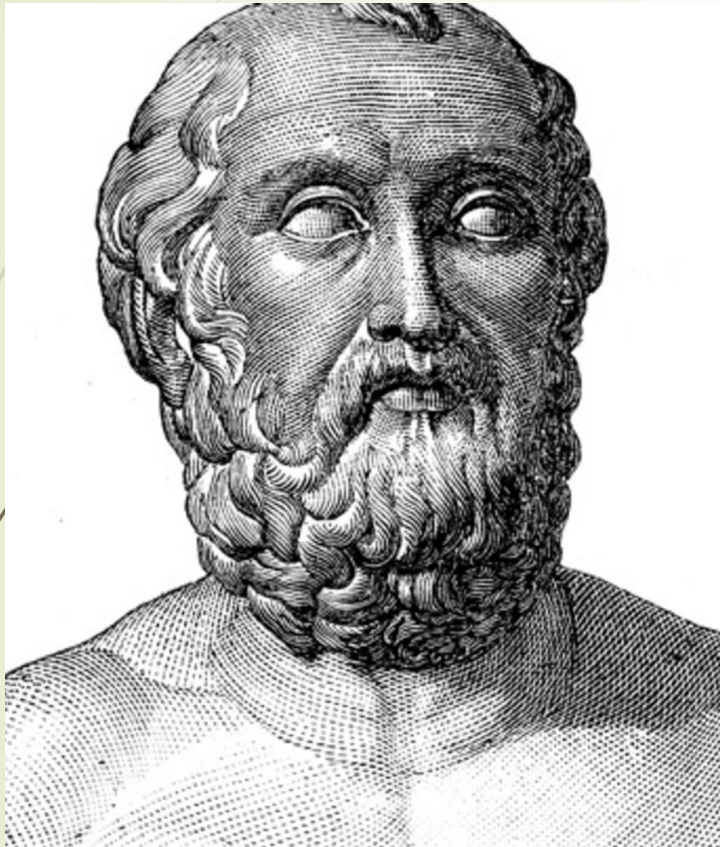
Needs and Opportunities to Work Together

- Mutual recognition of lab testing
- Central registry or at least easy access to COVID test results
- Inter-operable digital trackers

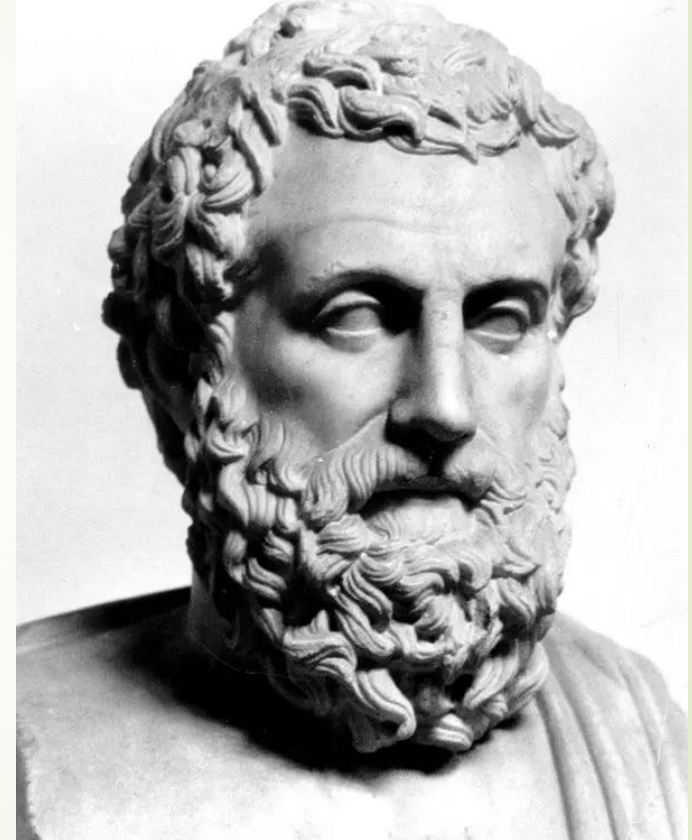


Conclusion

- Minimum Public Health Standards needed
 - Masks/ Nose and mouth covering
 - Hand washing and sanitizing
 - Safe Distancing (gradations depending on risk appetite)
- Use of technology enablers
- Step Ladder Approach to Public Health Standards factoring in resources and support
- Uncertainty continues; need for nimbleness and decisiveness
- Constant renewal of public trust
- Preparing citizens for a COVID world
- Working together across borders



This City is what it is because
our citizens are what they are
-Plato



A great city is not to be
confounded with a populous one
-Aristotle