

2nd PARTNERSHIP FORUM



Women in Power Sector
Professional Network in South Asia
(WePOWER)



ADB headquarters, Manila | 20–21 November 2019

Woman In PGE

Marmelia Dewi

21 November 2019

This is not an ADB material. The views expressed in this document are the views of the author/s and/or their organizations and do not necessarily reflect the views or policies of the Asian Development Bank, or its Board of Governors, or the governments they represent. ADB does not guarantee the accuracy and/or completeness of the material's contents, and accepts no responsibility for any direct or indirect consequence of their use or reliance, whether wholly or partially. Please feel free to contact the authors directly should you have queries.



HEAD QUARTER
Menara Cakrawala lantai 15
Jalan MH Thamrin No. 9
Jakarta 10340
Phone: (62-21) 398 33 222
Fax: (62-21) 398 33 230
Web: pge.pertamina.com



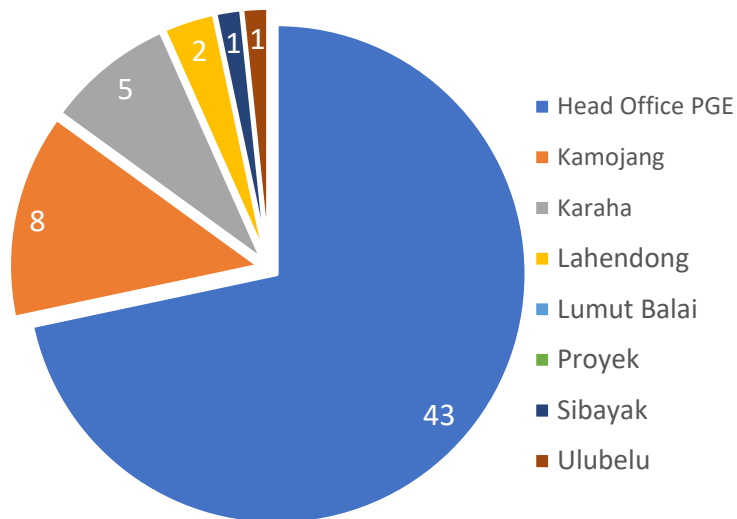
- Legend**
- Own Operation (672 MW)
 - Joint Operation (1.205 MW)
 - Development project (220 MW)
 - Exploration phase (± 275 MW)



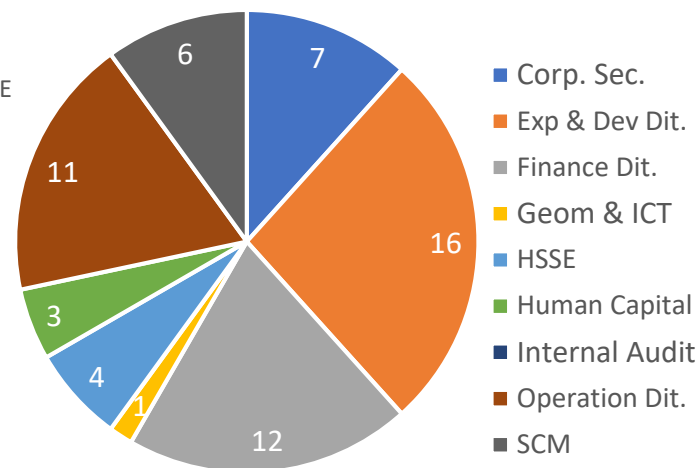
497

60

Location



Job Function



Average Training Hours by Gender on 2018

Gender	Duration (hours)	Number of Participant (People)	Average Training Hour (Hour/People)
Male Employee	20.772	362	57,38
Female Employee	2.802	48	58,38

Policies & Programs:

- Standards on Maternity Protection:
 - Maternity Leave
 - Lactation Room with Refrigerator
- Kartini Day

Workplace

- Friendly working place
- Woman activities after working hours :
Yoga & Zumba

Women in Power Sector Professional Network in South Asia (WePOWER)

