



Resilience Networks: Gender, Open Data and Geospatial Technologies

This is not an ADB material. The views expressed in this document are the views of the author/s and/or their organizations and do not necessarily reflect the views or policies of the Asian Development Bank, or its Board of Governors, or the governments they represent. ADB does not guarantee the accuracy and/or completeness of the material's contents, and accepts no responsibility for any direct or indirect consequence of their use or reliance, whether wholly or partially. Please feel free to contact the authors directly should you have queries.

STRENGTHENING RESILIENCE: CROSS SECTOR COMMUNITIES



PUBLIC AND PRIVATE SECTOR DATA LAYERED ACROSS THE SDGS



A WIKIPEDIA MODEL FOR MAPPING: OVER 5.5M GLOBAL CONTRIBUTORS

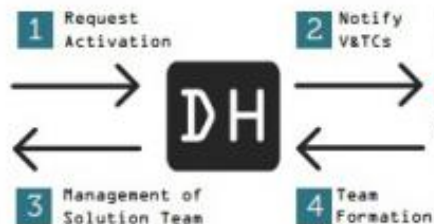
The screenshot displays the OpenStreetMap website interface. At the top left is the OpenStreetMap logo, followed by navigation buttons: "Edit", "History", and "Export". On the top right, there are links for "GPS Traces" and "User Diaries". Below the navigation bar is a search bar with the placeholder text "Where am I?" and a "Go" button. A welcome message box is overlaid on the left side of the map, stating: "Welcome to OpenStreetMap! OpenStreetMap is a map of the world, created by people like you and free to use under an open license." Below this message are two buttons: "Learn More" and "Start Mapping". The main map area shows a view of Southeast Asia, including parts of China, Hong Kong, Cambodia, Vietnam, and the Philippines. Various regions and islands are labeled, such as Batanes, Ilocos Norte, Abra, Ilocos Sur, Isabela, Benguet, Pangasinan, Zambales, Bataan, Cavite, Quezon, Catanduanes, Marinduque, Albay, Sorsogon, Occidental Mindoro, Rimbani, Masbate, Aklan, Antique, Biliran, Leyte, Cebu, Bohol, Camiguin, Misamis Oriental, Misamis Occidental, Zamboanga, Sibuyan, Compostela Valley, Maguindanao, Sultan Kudarat, Basilan, Sulu, Tawi-Tawi, Sabah, Brunei Darussalam, Perlis, Kedah, Pulau Pinang, Aceh, Malaysia, Negeri Sembilan, and Melekeok. A scale bar at the bottom left indicates distances of 300 km and 200 mi.

THE DIGITAL HUMANITARIAN NETWORK

Formal Humanitarian Responders



Traditional humanitarian actors (including more than the listed above) look for ways to improve their response by requesting services provided by DH Network members.



Activation Facilitation Process

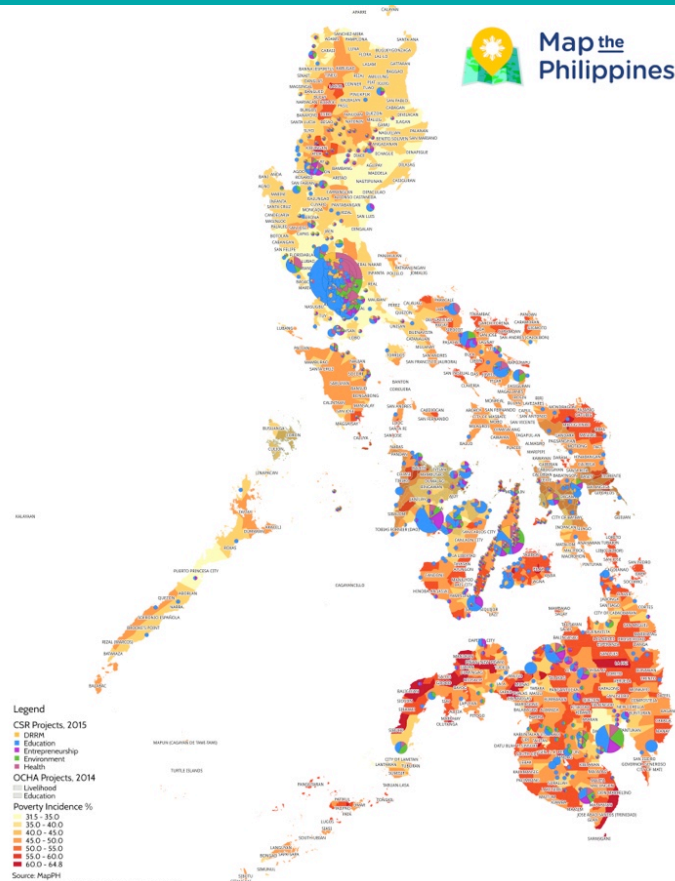
The Digital Humanitarians Network brings both communities together by facilitating service requests, organizing V&TCs response teams and bringing them into the same collaboration scheme.

Volunteer & Technical Communities (V&TCs)



V&TCs provide services to contribute to a given humanitarian response.

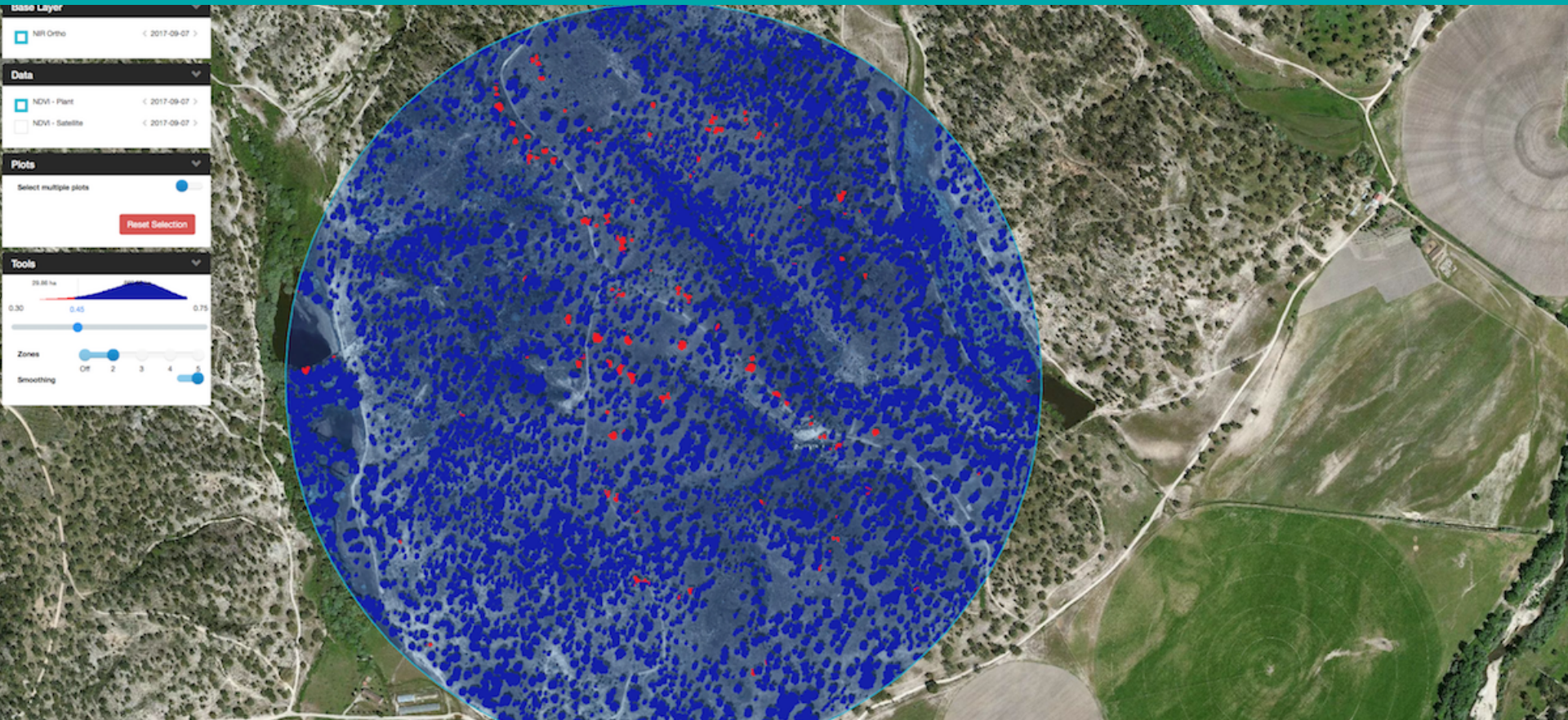
CSR PROJECTS AGAINST POVERTY INCIDENCE



GOVERNMENT AND COMMUNITY MAPPING WORKSHOPS



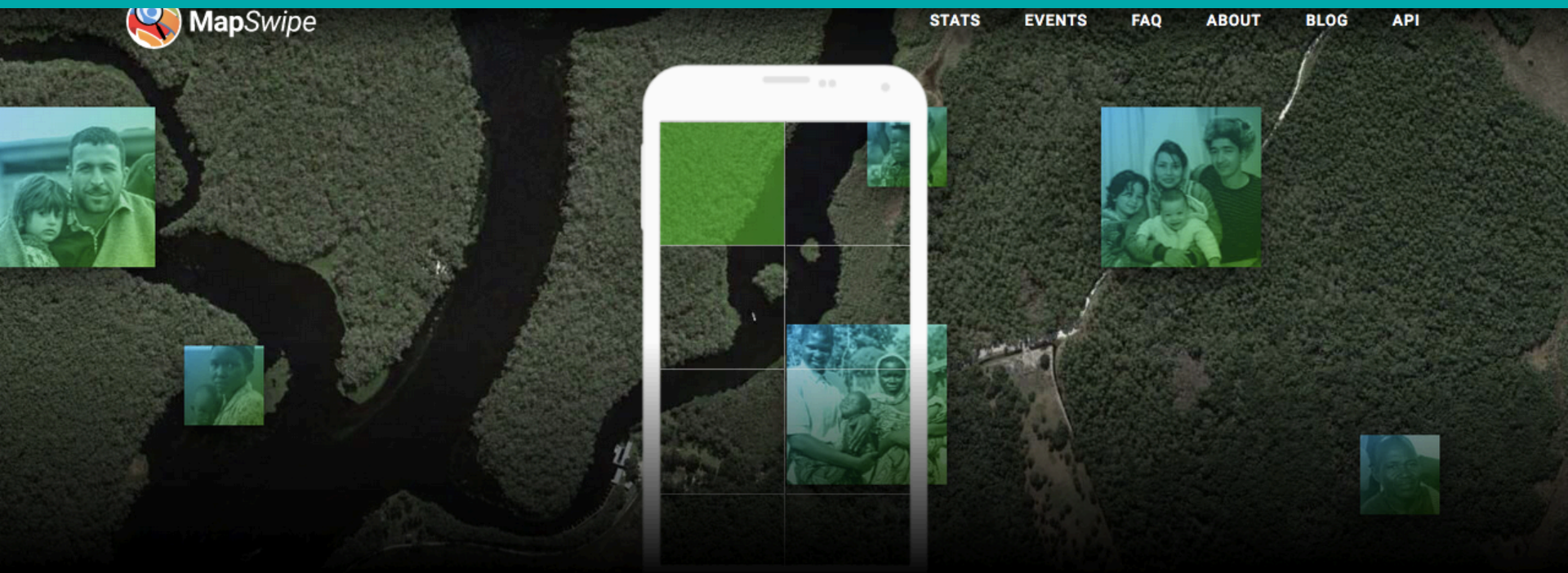
SATELLITE IMAGERY ANALYTICS: CROP DISEASE DETECTION



THE FUTURE OF WORK: 41 YOUTHMAPPERS GLOBAL CHAPTERS



MAPSWIPE MOBILE APP



With every swipe and tap, you
help put families on the map



Map the Philippines

+ CROSS SECTOR COLLABORATION + CIVIC ENGAGEMENT
+ OPEN DATA + ICT4D + OPENGOV + FOOD 2.0

+1 647 299 5444
+63 917 651 9668
celinaagaton.com

celina@celinaagaton.com
twitter@celinaagaton
celinaagaton