



WORLD  
RESOURCES  
INSTITUTE

This is not an ADB material. The views expressed in this document are the views of the author/s and/or their organizations and do not necessarily reflect the views or policies of the Asian Development Bank, or its Board of Governors, or the governments they represent. ADB does not guarantee the accuracy and/or completeness of the material's contents, and accepts no responsibility for any direct or indirect consequence of their use or reliance, whether wholly or partially. Please feel free to contact the authors directly should you have queries.

# Data for Action

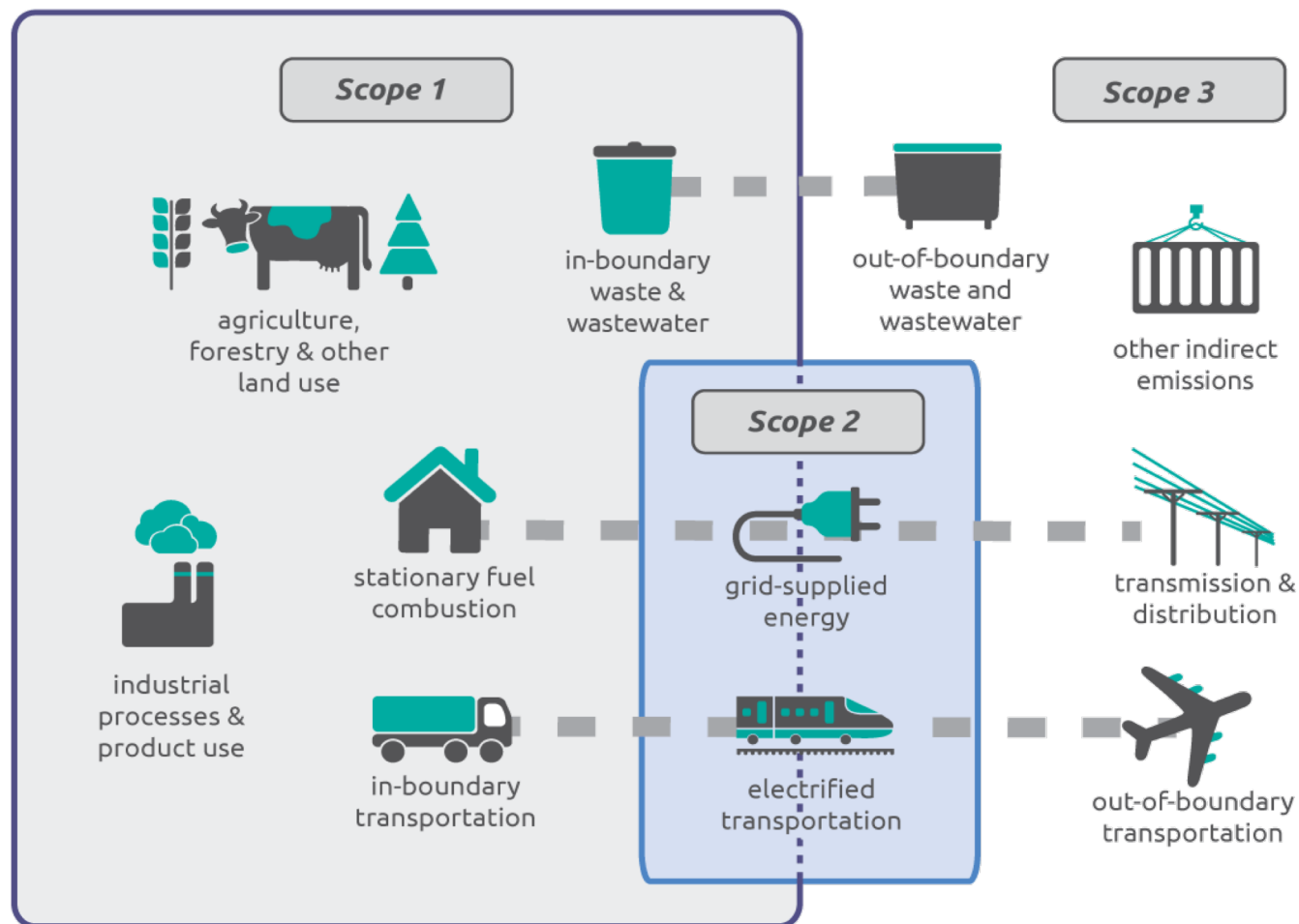
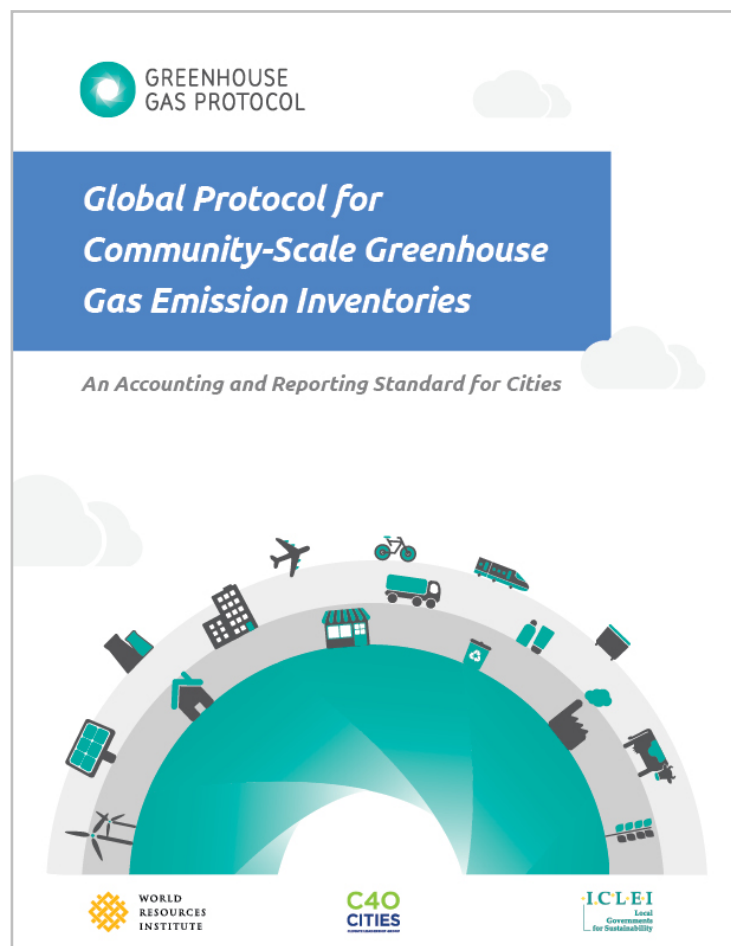
## 温室气体清单的应用

Dr. Fong Wee Kean  
*Deputy Director, WRI China*

房伟权 博士  
世界资源研究所中国区副首席代表

# GHG inventories

## 温室气体清单



# Evidence-based climate action planning

## 低碳城市规划的主要步骤



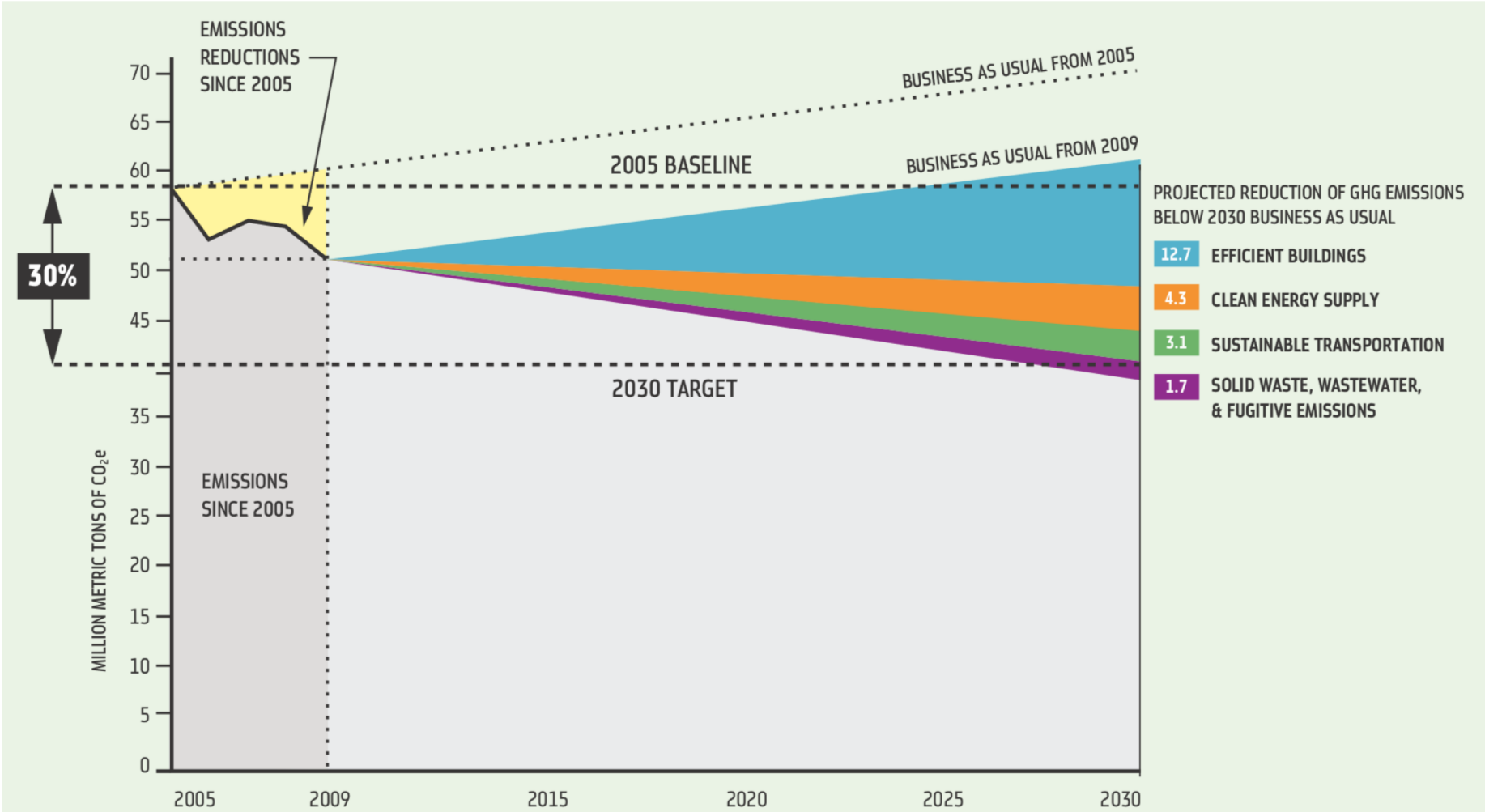
*You can't manage what  
you can't measure*

没有计量就没有管理

# Target setting

## 减排目标设定

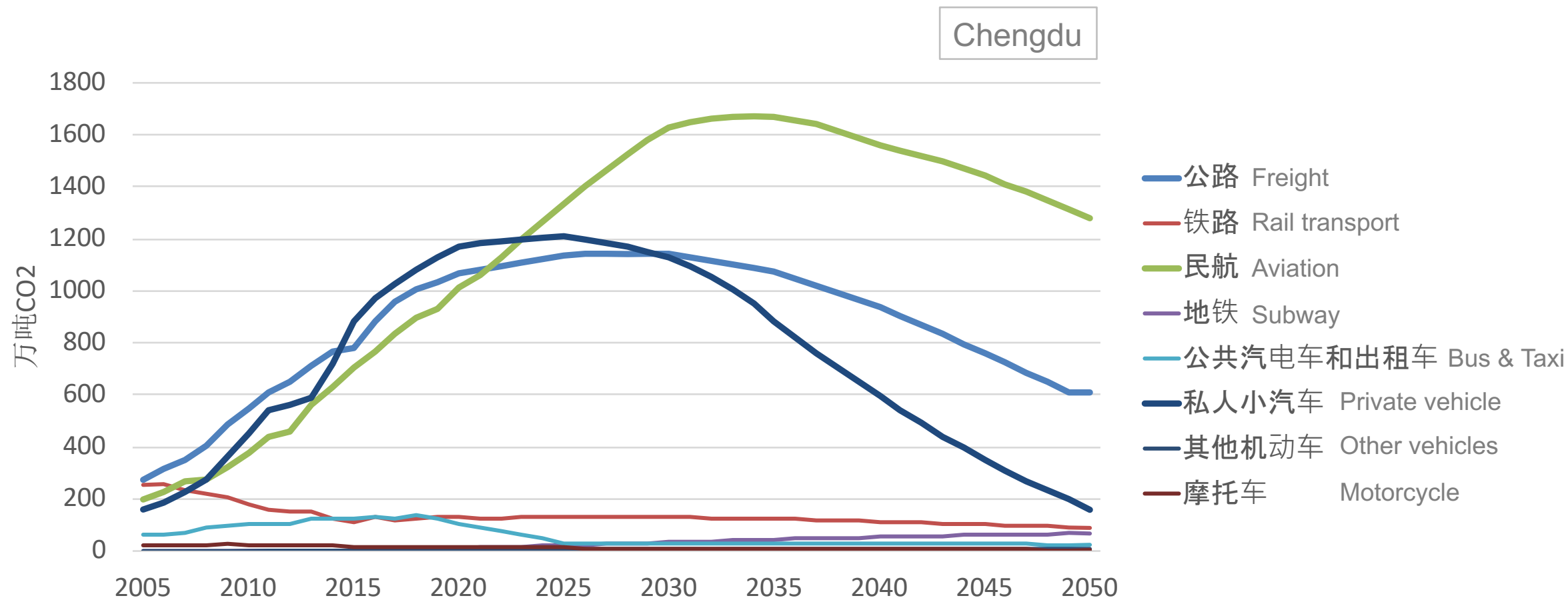
New York City



Source: New York City

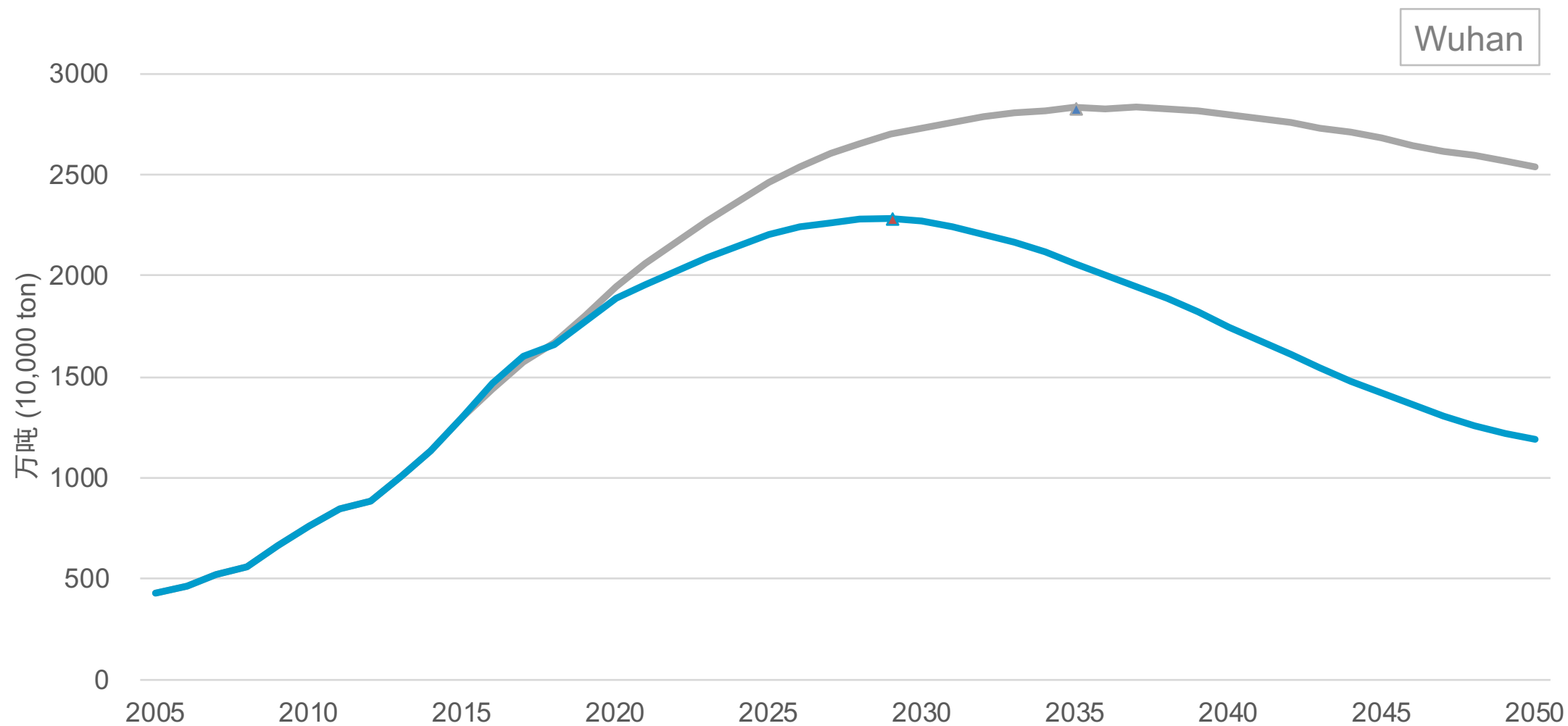
# Subsector scenario analysis

## 分部门情景分析



# Target evaluation

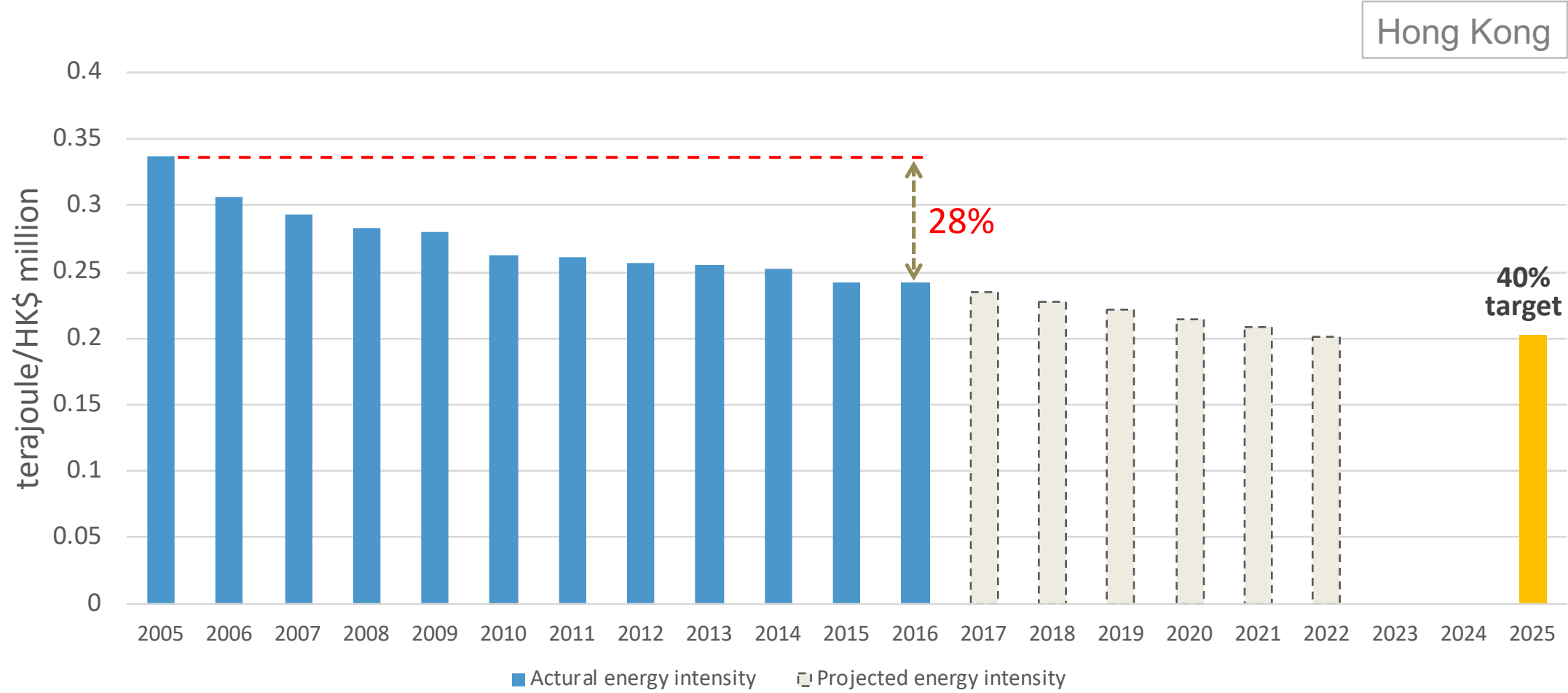
## 目标评估



Source: WRI

# Progress tracking

## 目标追踪



Source: Calculated using data from Census and Statistics Department and the Energy Statistics Annual Report.

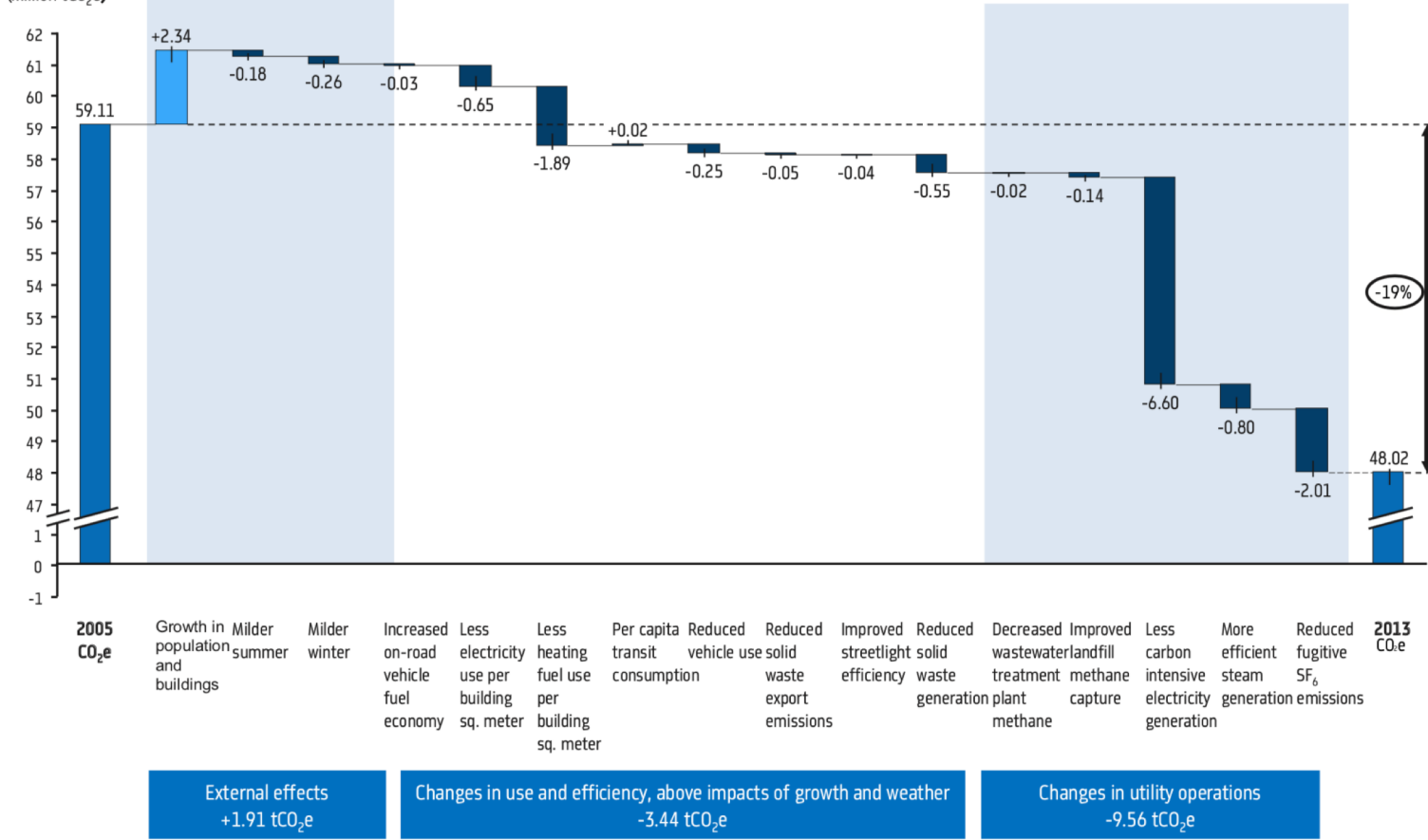
# Action evaluation

## 减排效果评估

GHG Emissions  
(Million tCO<sub>2</sub>e)

New York City

GHG Emissions  
(Million tCO<sub>2</sub>e)

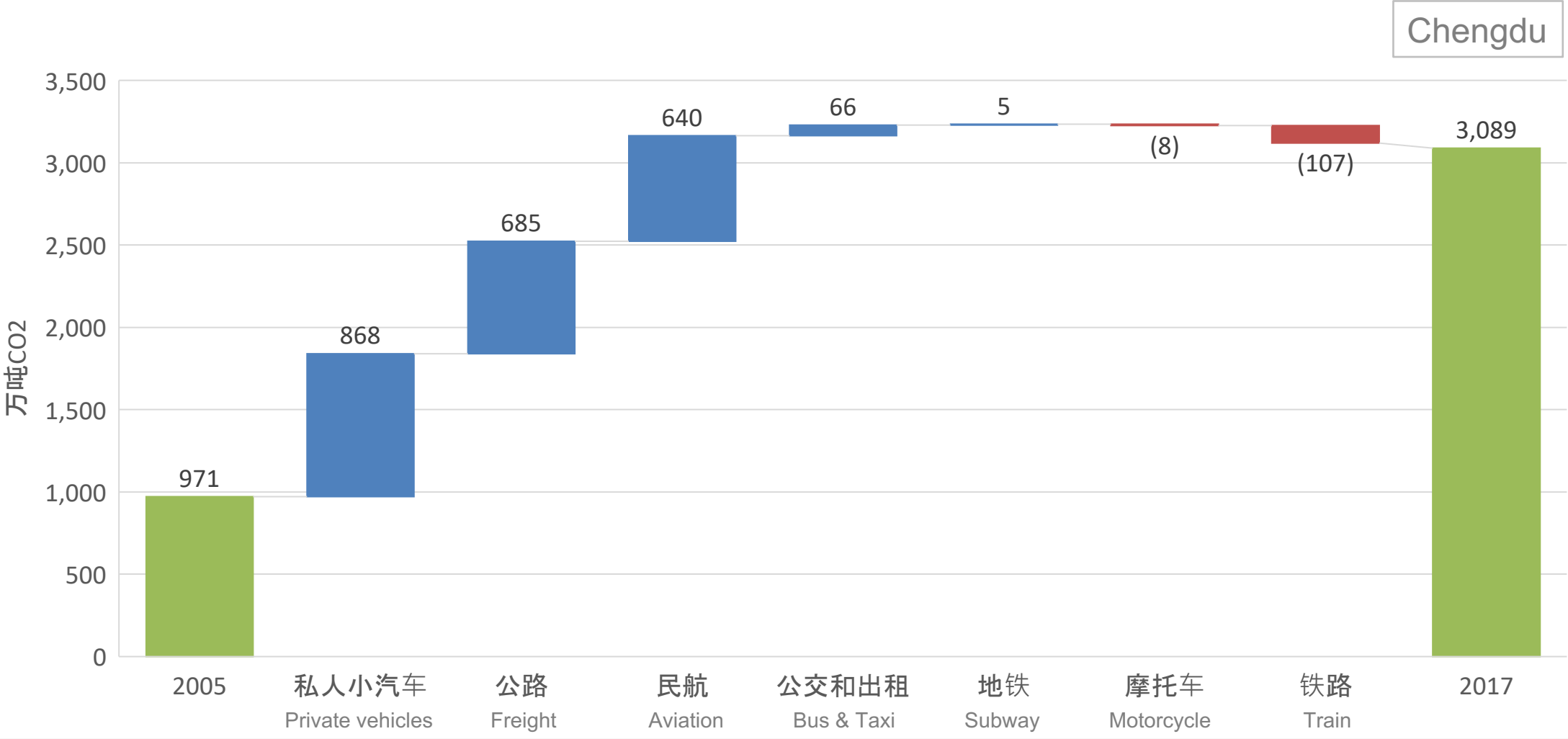


Source: New York City



# Action evaluation

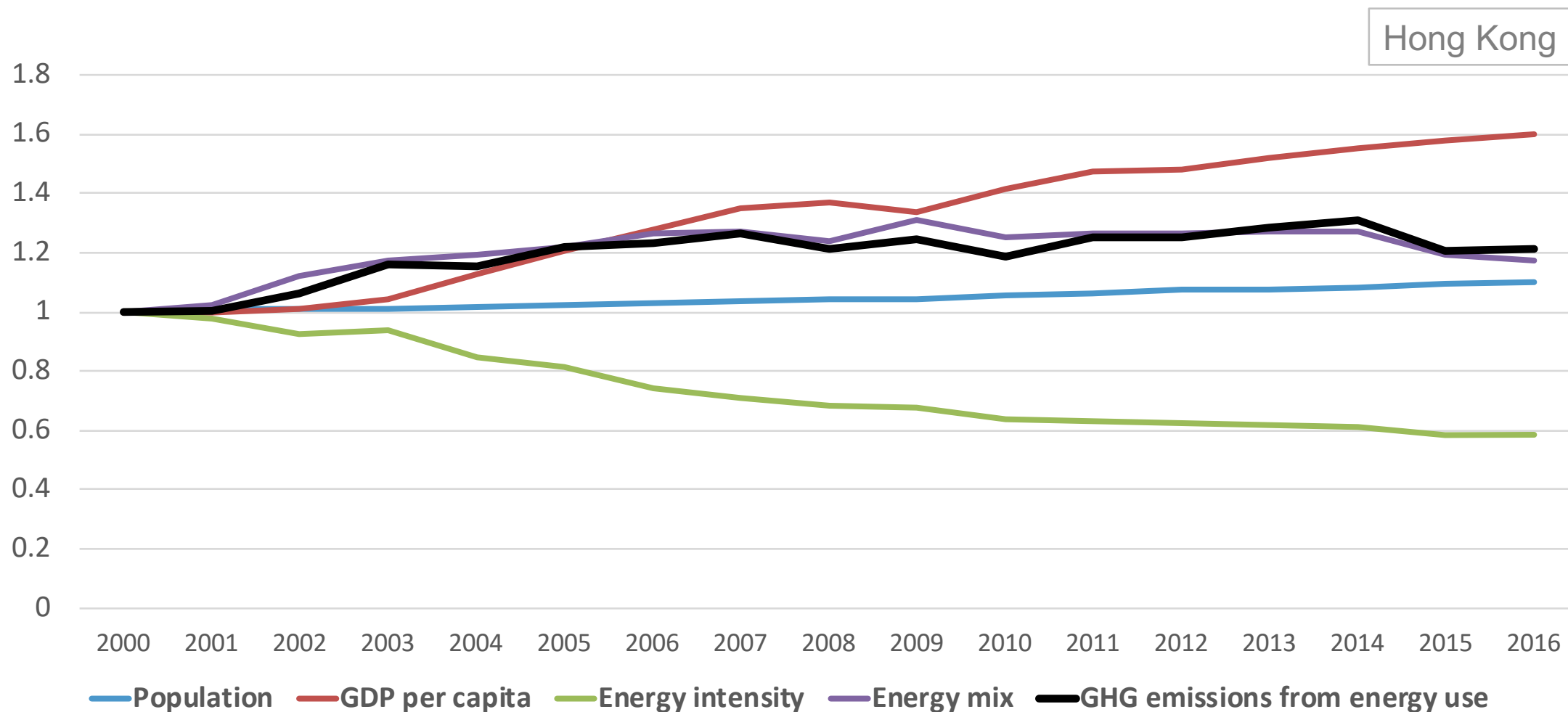
## 减排效果评估



Source: WRI (unpublished)

# Driving force analysis

## 追踪驱动因素的变化趋势



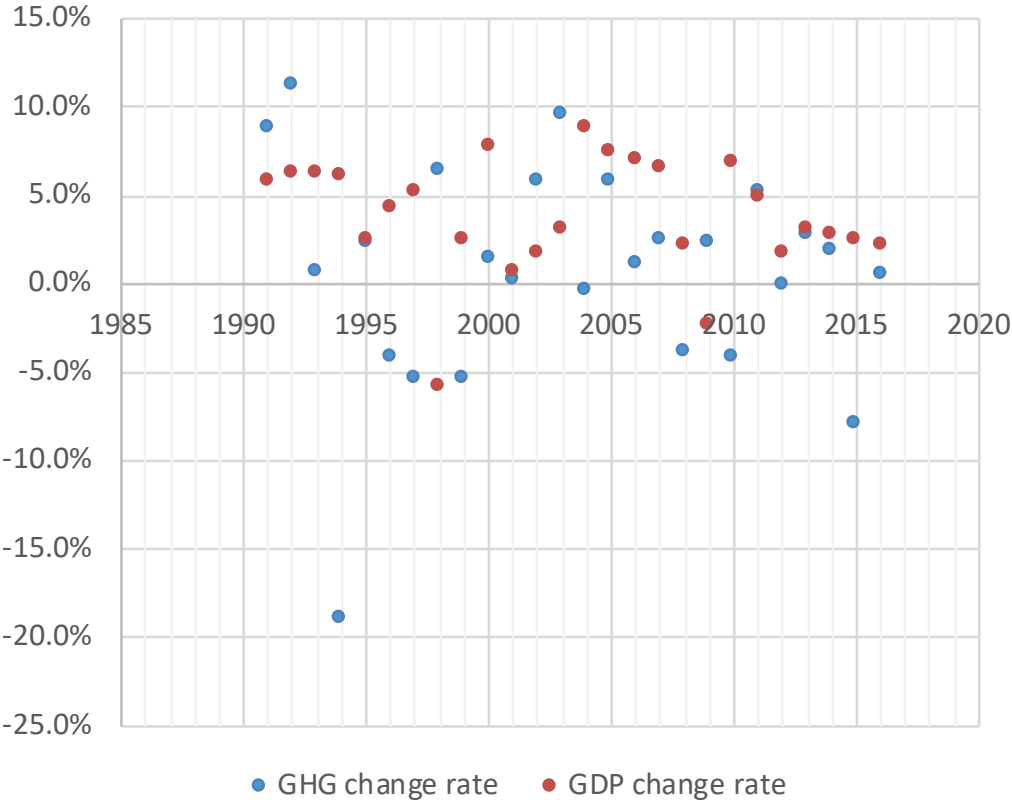
Source: Population and GDP are from Census and Statistics Department, Energy consumption are primary energy consumption data from the Energy Statistics Annual Report, GHG emissions are from Environment Protection Bureau, other parameters are calculated based the above data.

# Carbon decoupling rate analysis

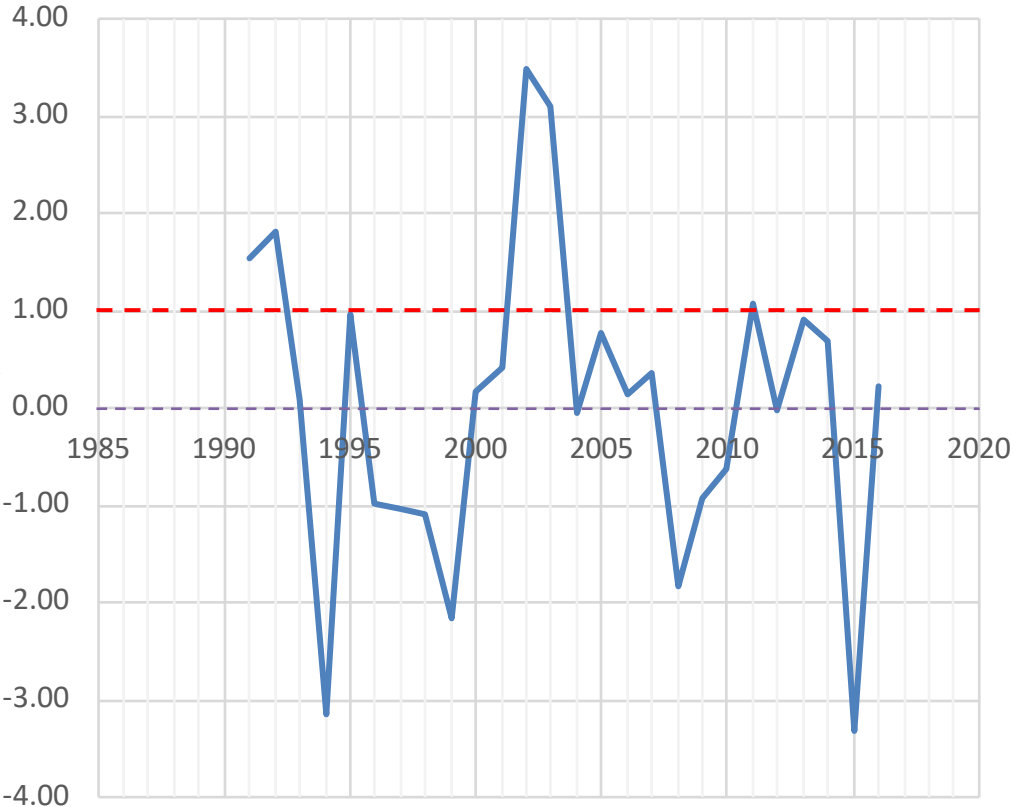
## 脱钩指数分析

Hong Kong

GHG emissions and GDP change



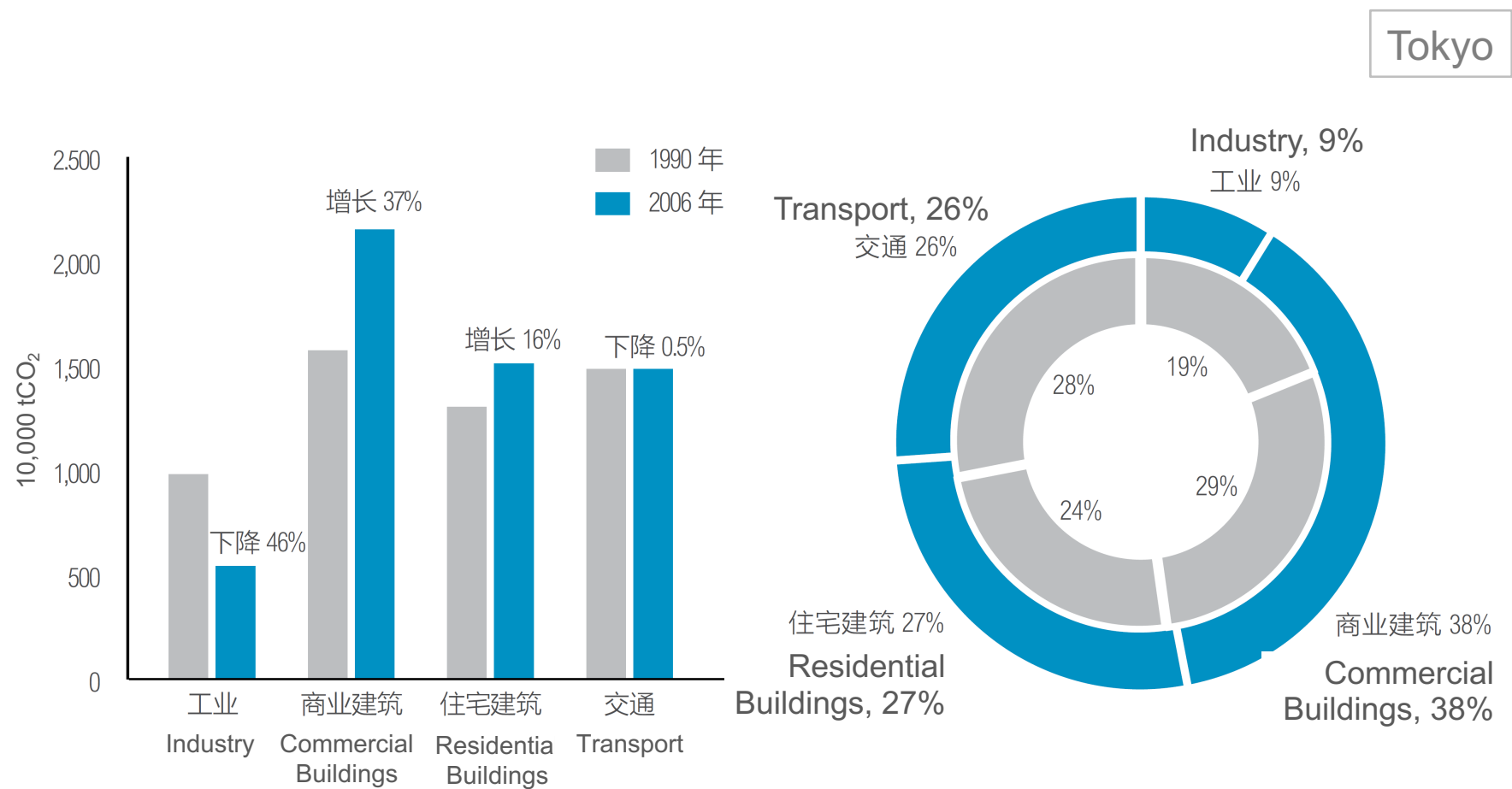
Carbon decoupling index



Source: Calculated using data from Census and Statistics Department, Energy Statistics Annual Report, Environment Protection Bureau.

# Identifying action

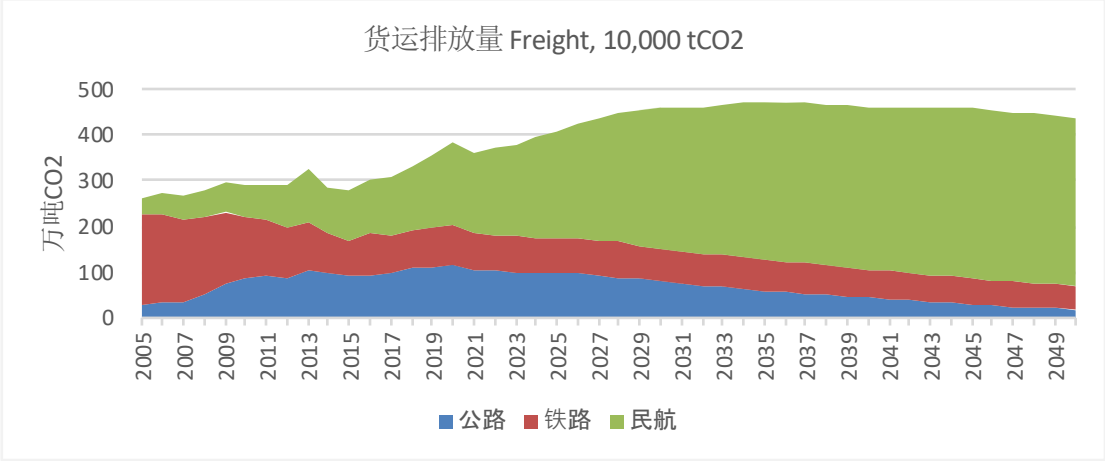
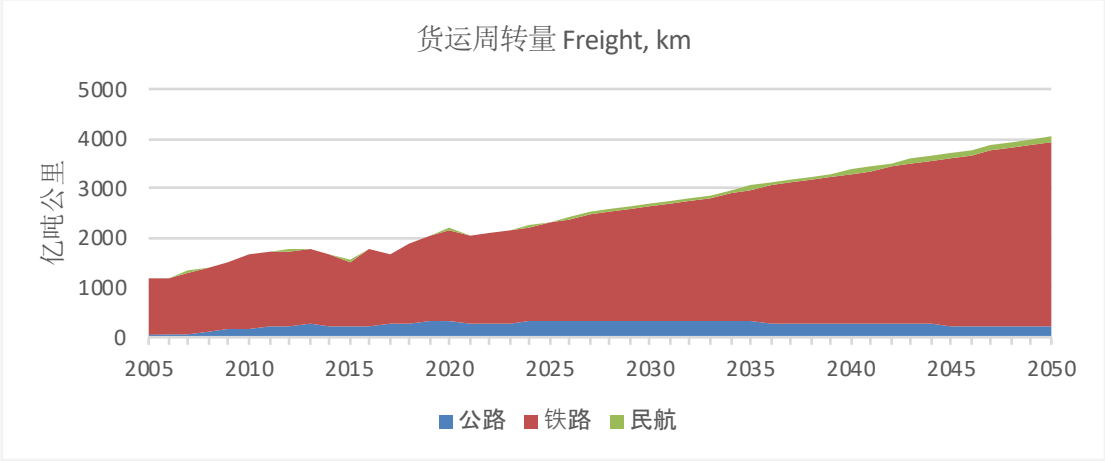
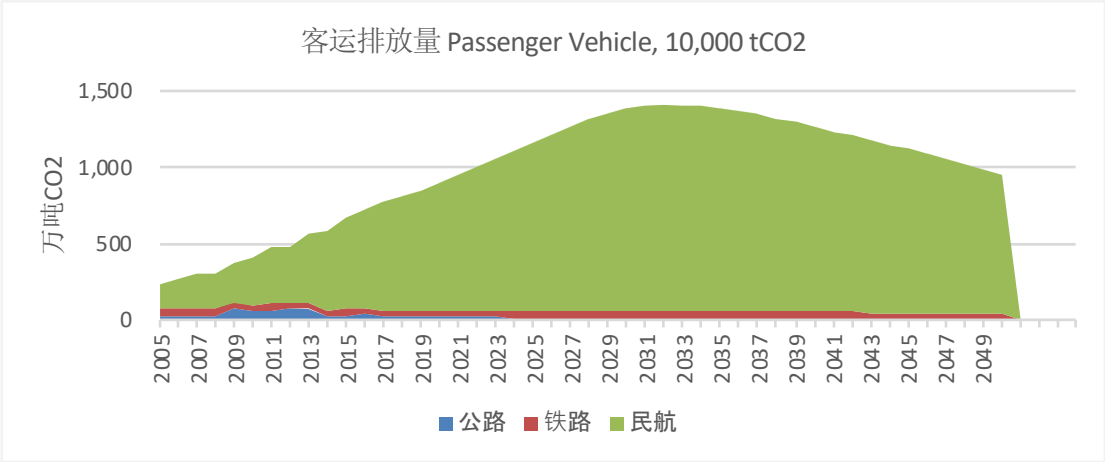
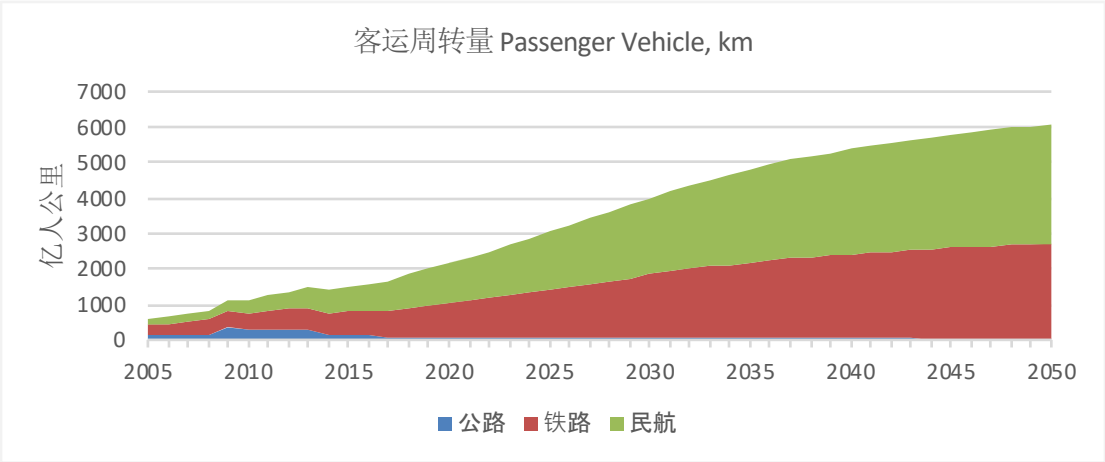
## 识别减排行动



# Mitigation potential analysis

## 减排潜力分析

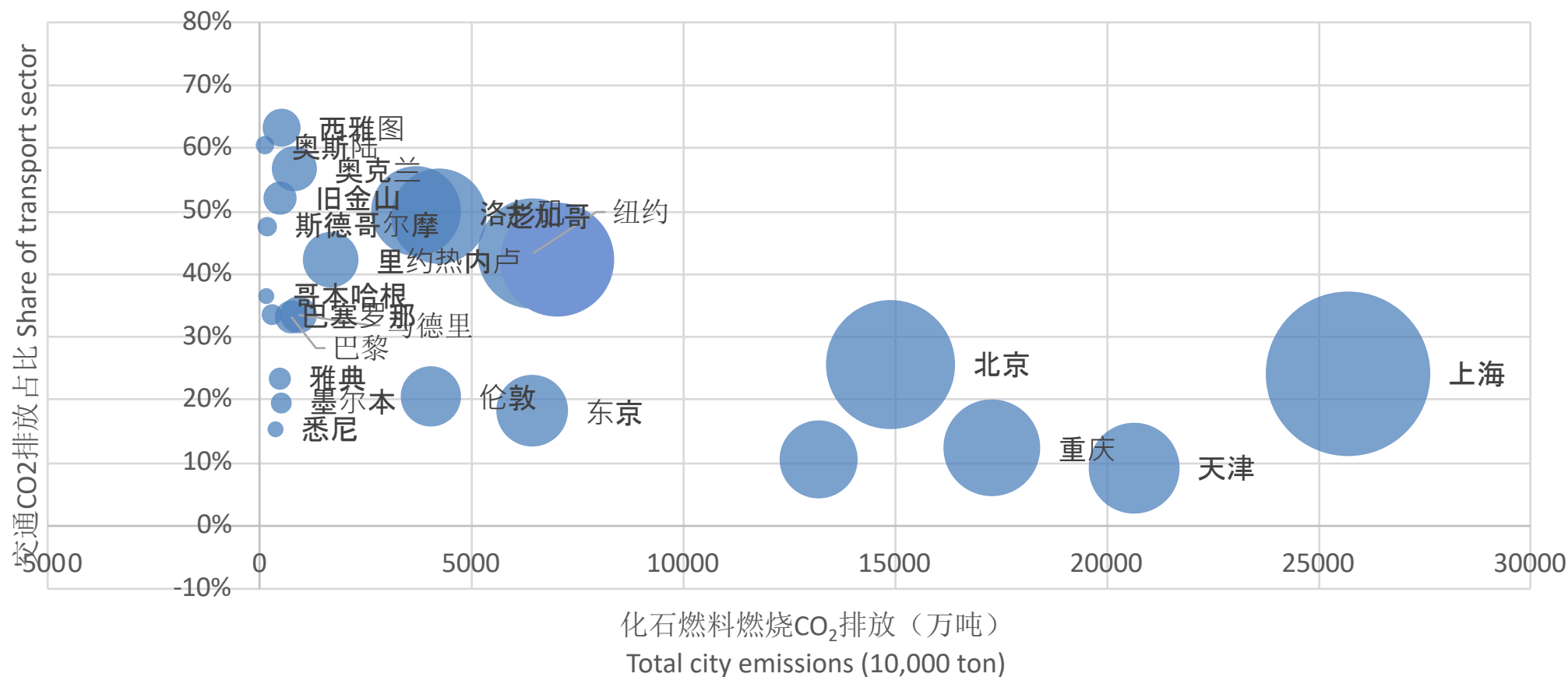
Chengdu



Source: WRI (unpublished)

# Comparing with other cities

## 城市间比较



# Conclusion 小结

GHG data can be used for what aspects of low carbon planning?

城市温室气体清单能够为哪些低碳决策提供支撑？

- Scenario analysis  
情景分析
- Target setting  
目标制定
- Progress tracking  
目标追踪
- Identifying action  
识别行动
- Performance evaluation  
减排效果评估



What are required to use GHG data for supporting decision-making?

为支持决策，城市温室气体清单应该具备哪些要素？

- Annual GHG data 常态化编制
- Accurate activity data  
活动水平数据科学可靠
- Granular data 精细的数据
- Relevance 反映城市特点
- Short time lag 滞后短
- Consistency 数据一致性
- Data analysis 数据分析和应用



What are required to develop good GHG inventories?

编制完善的温室气体清单需要哪些配套保障？

- Government buy-in  
政策保障
- Statistical data  
统计基础
- Inter-agency coordination  
部门协作
- Capacity building  
能力建设