

This is not an ADB material. The views expressed in this document are the views of the author/s and/or their organizations and do not necessarily reflect the views or policies of the Asian Development Bank, or its Board of Governors, or the governments they represent. ADB does not guarantee the accuracy and/or completeness of the material's contents, and accepts no responsibility for any direct or indirect consequence of their use or reliance, whether wholly or partially. Please feel free to contact the authors directly should you have queries.



Resilient Atoll Nations in Productive Oceans

Male, Maldives

27th-29th August 2019

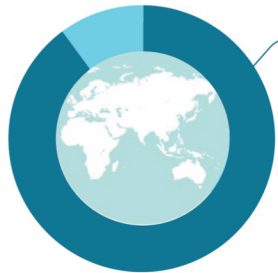
**Securing the Sustainable
Blue Economy for Atoll
Nations**

John Tanzer
WWF Oceans Leader

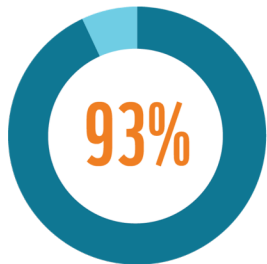
AN OCEAN OF BENEFITS



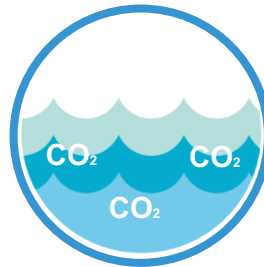
3 BILLION PEOPLE
RELY ON FISH AS A MAJOR
SOURCE OF ANIMAL PROTEIN*



90% OF FISHERFOLK ARE
SMALL-SCALE FISHERS,
AND ABOUT HALF ARE WOMEN



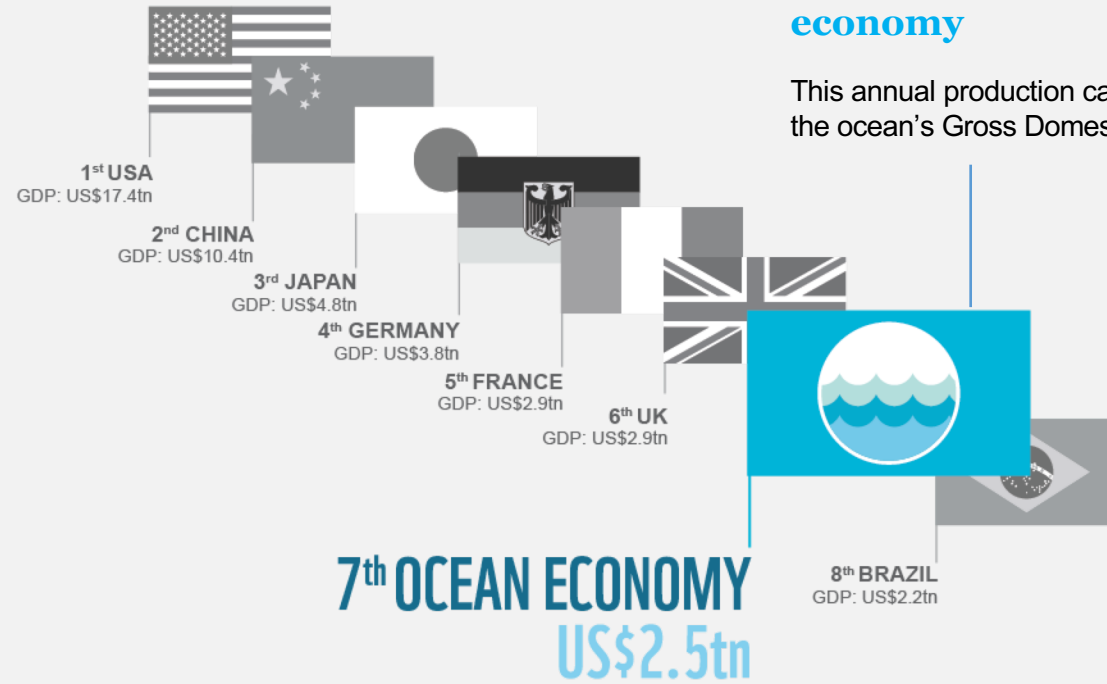
**THE OCEAN ABSORBS
93% OF ADDED HEAT**



30% of CO₂
THE OCEAN ABSORBS
30% OF ANTHROPOGENIC
EMISSIONS OF CO₂



50% of O₂
THE OCEAN PRODUCES
ABOUT HALF THE
OXYGEN WE BREATHE



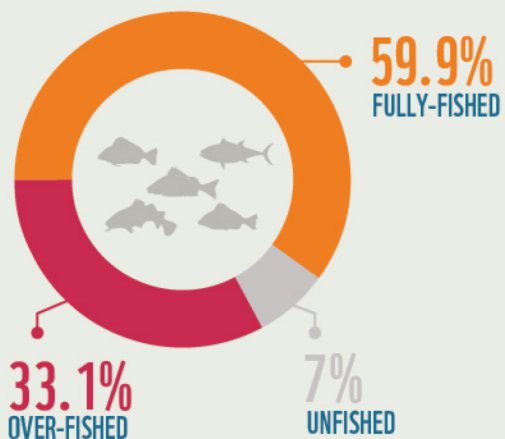
**The annual economic value
generated from the ocean would
make it the world's 7th largest
economy**

This annual production can be thought of as
the ocean's Gross Domestic Product

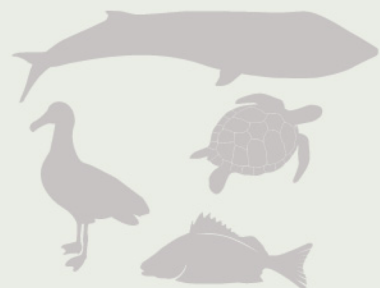
Hoegh-Guldberg *et al*, 2015. Reviving the Ocean Economy, WWF

* fish from marine and inland fisheries

DECLINE OF FISHERIES



DECLINE OF MARINE SPECIES



Populations of marine species have declined by 36% between 1970 and 2012

DECLINE OF HABITATS



50% of the world's coral reefs have disappeared



Almost one-third of all seagrasses have been lost

Deforestation rate of mangroves exceeds even the loss of forests by 3-5 times



97%

Pacific bluefin tuna numbers have dropped more than 97% from unfished levels

36%

50%

29%

> 8 million tonnes

of plastic dumped into the sea every year. That's the same as a garbage truck dumping a full load into the ocean every minute





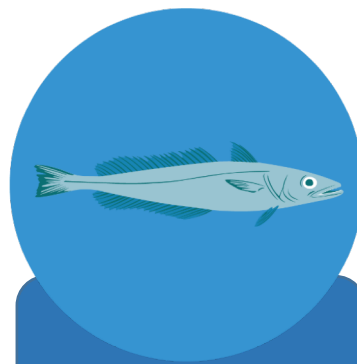
The "business as usual" trajectory entails great risk to all ocean users

Implications of substantive loss of coral reefs...



LOSS OF INCOME AND JOBS

6 million direct
fishing jobs and over
US\$6 billion in
income



IMPACTING FOOD SECURITY

275 million people
live within 30km of
reefs



UNDERMINING TOURISM

Coral reef related
tourism generates
US\$36 billion
annually



LOSS OF PROPERTY

Provide risk
reduction benefits to
197 million people

AN OCEAN OF OPPORTUNITY A SUSTAINABLE BLUE ECONOMY:



Restores, protects and maintains the diversity, productivity, resilience, core functions, and intrinsic value of marine ecosystems — the natural capital upon which its prosperity depends.

Is based on clean technologies, renewable energy, and circular material flows to secure economic and social stability over time, while keeping within the limits of one planet.

Provides social and economic benefits for current and future generations by contributing to food security, poverty eradication, livelihoods, income, employment, health, safety, equity, and political stability.



Securing the fundamentals of a sustainable blue economy for Atolls



THE FULL POTENTIAL OF THE BLUE ECONOMY CAN ONLY BE UNLOCKED AND MAINTAINED IF SUSTAINABILITY IS THE POLICY PRIORITY



Establishing Blue Accounting Frameworks



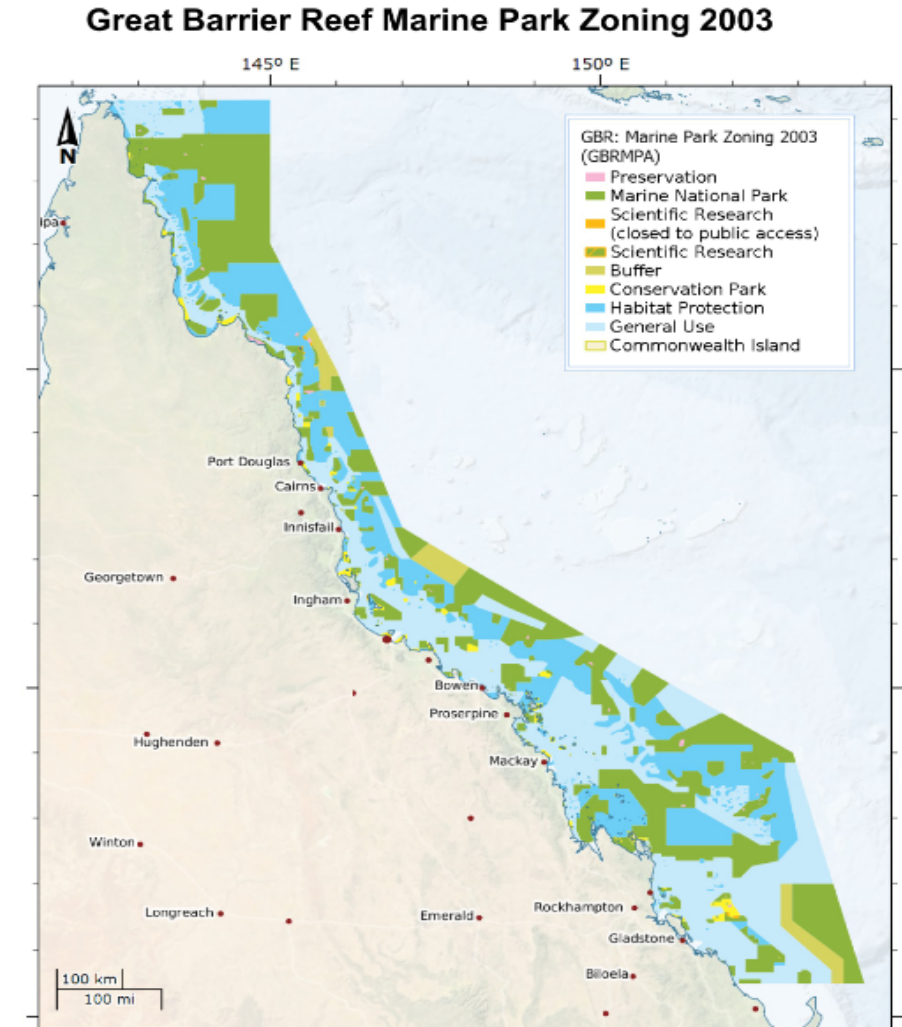
- Valuation and monitoring your blue economy – assets and flows.
- Ocean states should all develop a set of *ocean national accounts* which can be integrated with more traditional sets of full economy national accounts
- Good work underway - ESCAP and UN Environment are leading a global effort to develop consistent principles and guidelines - **Global Ocean Accounts Partnership (GOAP)**
- Can only reinforce and strengthen the arguments of Atolls and indeed all Ocean and coastal states for improved management of the ocean.



Securing the key assets of your blue economy - MSP



- Marine spatial plans *well designed and effectively implemented* can help secure the ‘jewels in your ocean crown’
- 30% highly protected/100% well managed EEZs
- Protecting your ‘nurseries of the seas’ by prioritising those places that are essential to fisheries recruitment or to maintenance of tourism experiences.
- Community engagement and local traditional knowledge



Financing the *on ground transition* to sustainable blue economies



- Shifting reliance from ‘at risk’ blue capital such as diminishing fisheries, mangroves and coral reefs should be underpinned by co-development of alternative endeavours and options.
- These alternatives pathways require *external investment* in part or whole but should always be developed and implemented in close cooperation with local communities.
- There are an increasing number of examples from various places that can be adopted or adapted to facilitate communities to conserve their blue capital while improving their economic, social and ecological security and resilience.



THEORY OF CHANGE:

SUSTAINABLE BLUE ECONOMY AT THE HEART OF COASTAL DEVELOPMENT

REDUCE RISK

of unsustainable coastal infrastructure



BUILD RESILIENCE

through blue infrastructure restoration



ADB

Willis
Towers
Watson

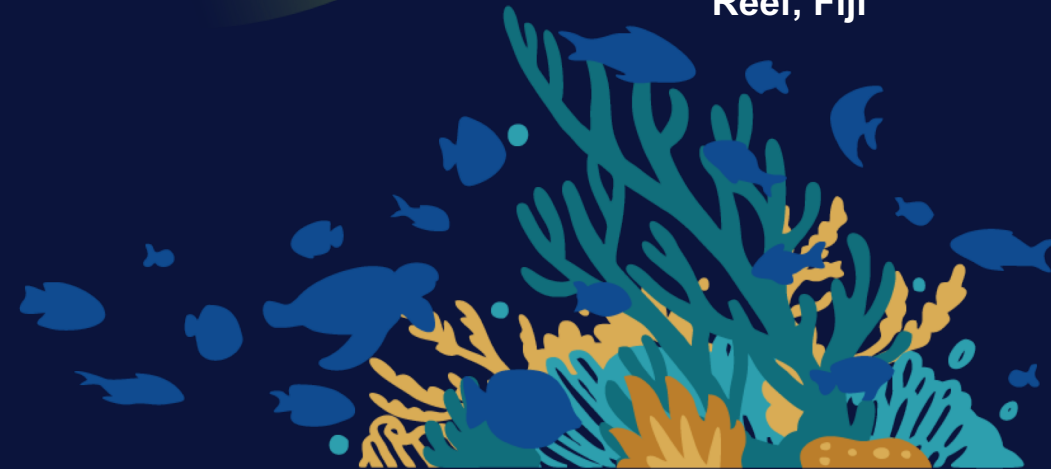
**\$5 billion
leverage**

to secure natural blue infrastructure in critical places

BUILD MOMENTUM & CREATE SECTOR-WIDE TIPPING POINT

Seascape level demonstration site

Great Sea Reef, Fiji



CORAL REEF RESCUE

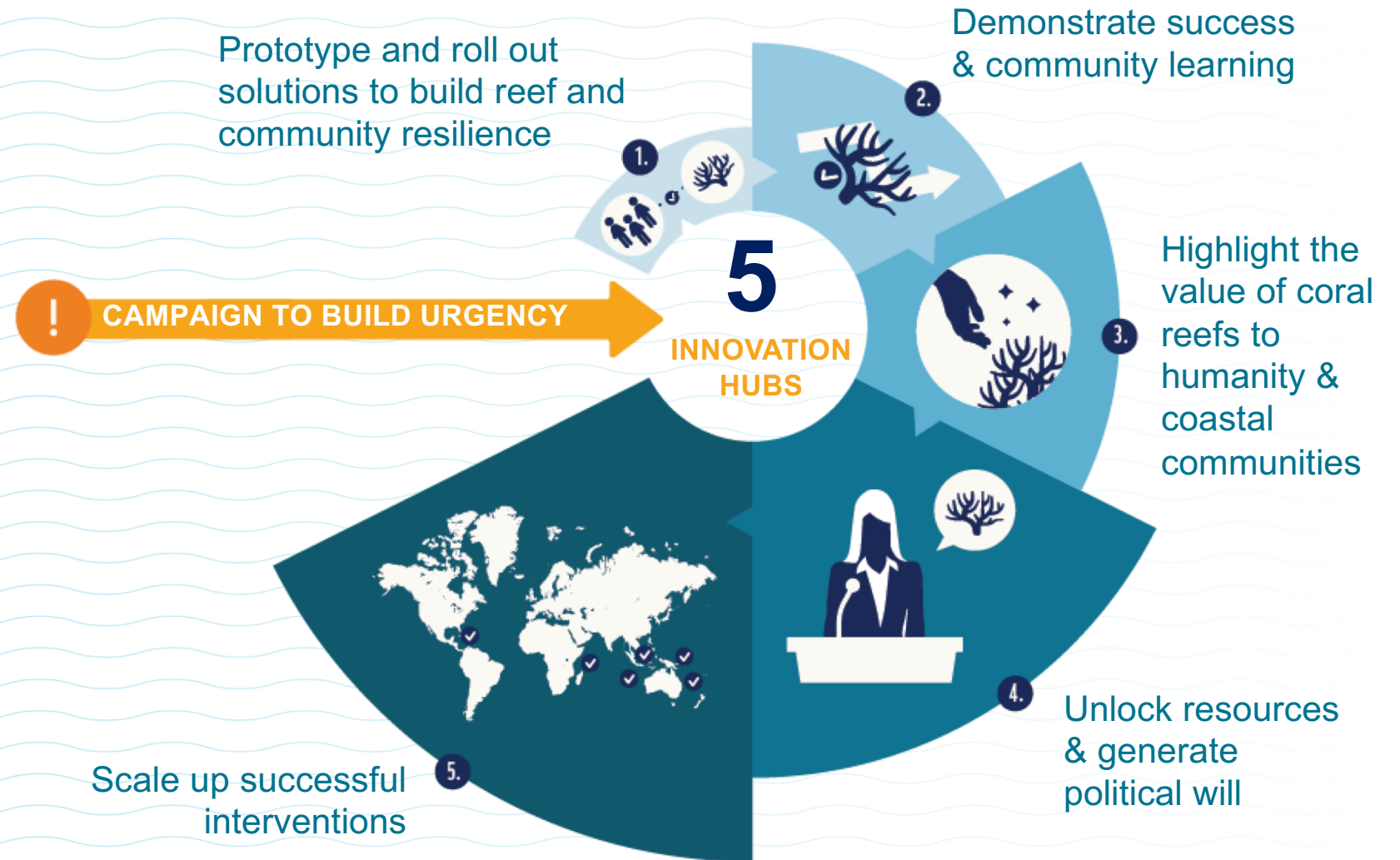
APPROACH

Our goal is that reef-dependent people can benefit from resilient reefs for their food security and livelihoods.

By identifying the most resilient coral reefs (regeneration reefs) and protecting them, we can ensure that the larvae they produce can benefit nearby reefs that can ‘bounce’ back as a result.

THEORY OF CHANGE

The world's leading coral reef conservation and development NGOs are using their collective impact to take on the coral reef crisis based on rigorous science and extensive experience.



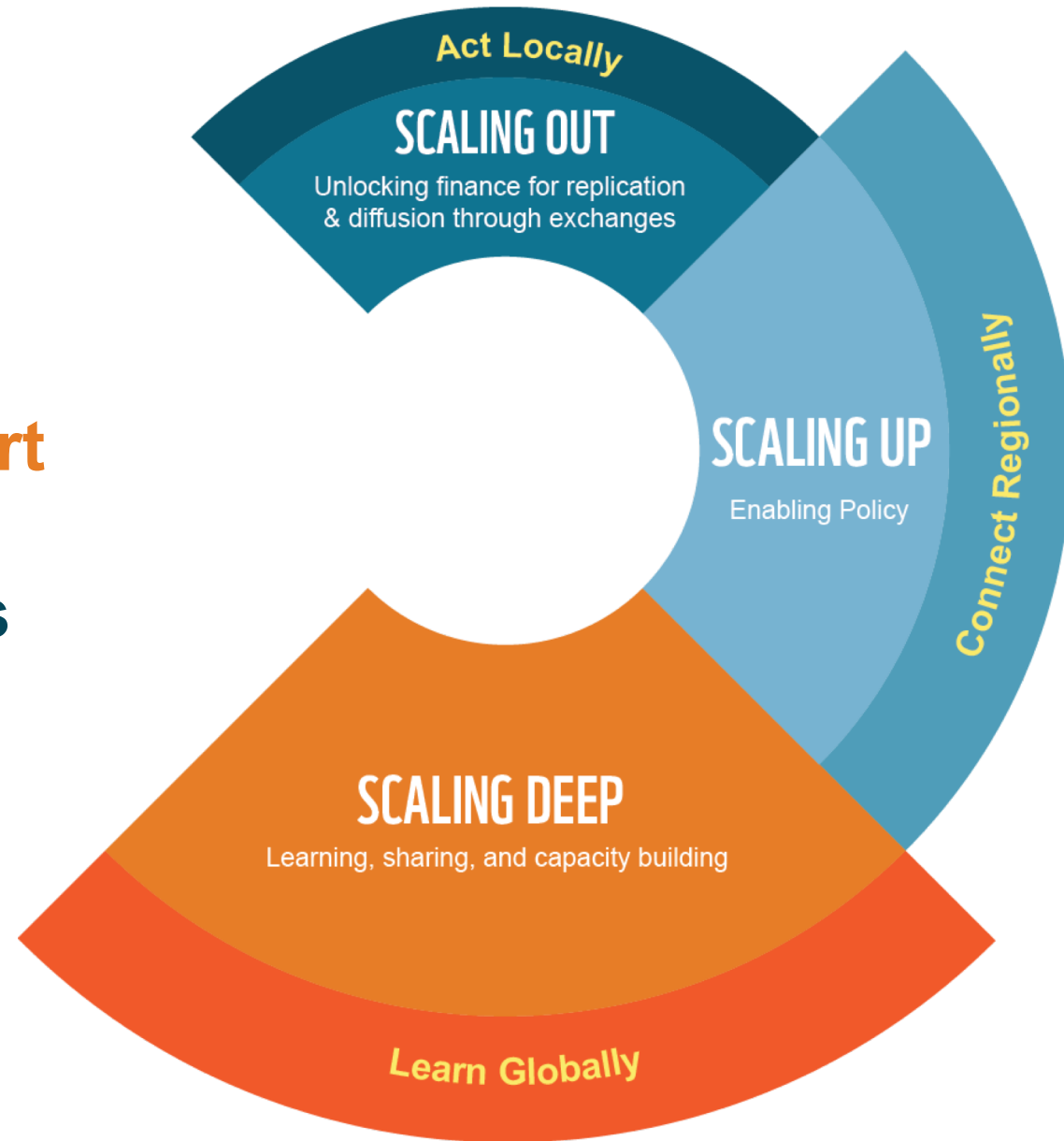
ACCELERATING COASTAL COMMUNITY-LED CONSERVATION

© Jonathan Caramanus / Green Renaissance / WWF-UK



together possible.

A new approach to **support**
coastal communities to
manage natural resources
sustainably



Act locally



100 sites in
34 countries

Connect regionally



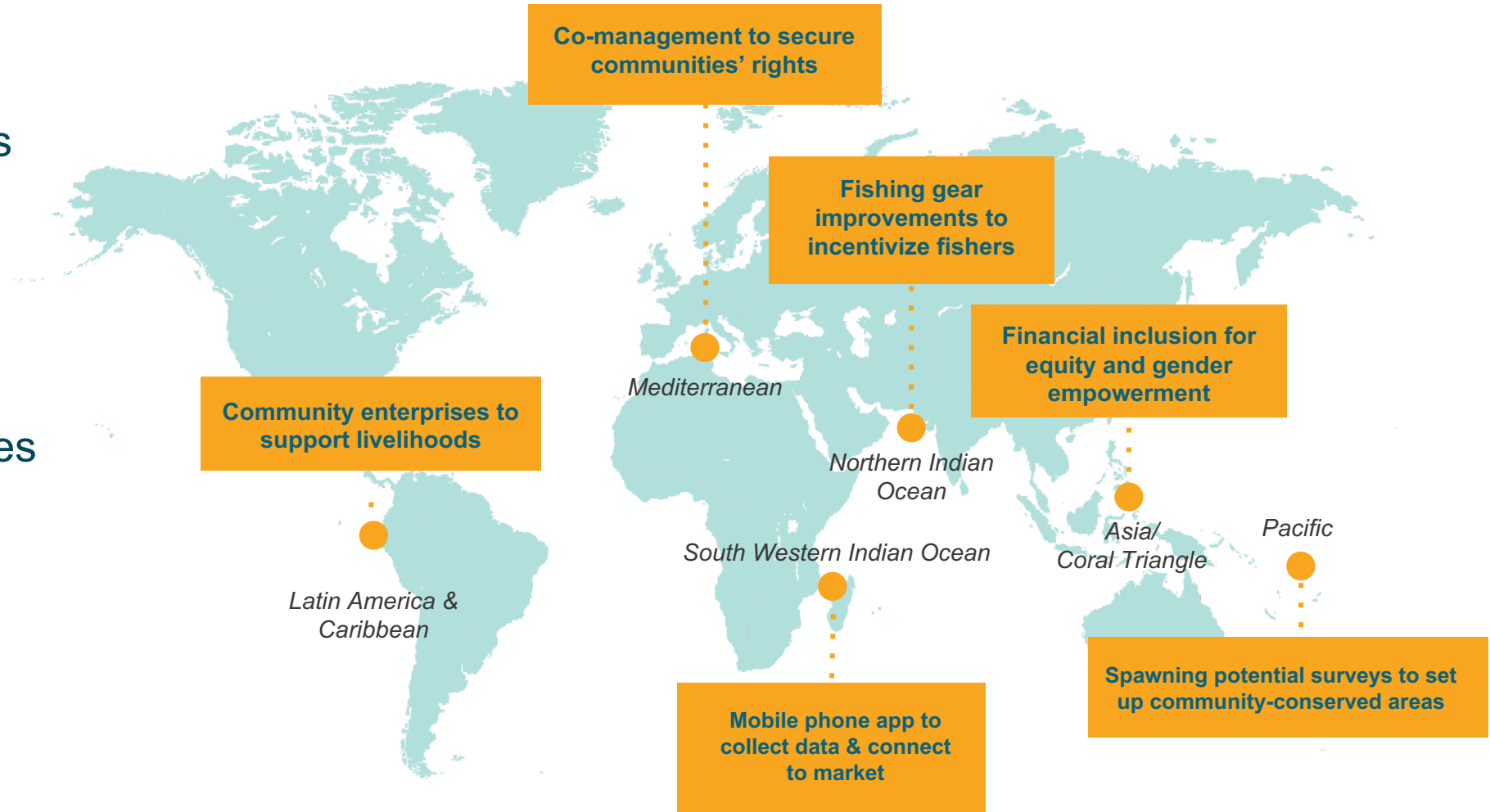
6 seascapes

Learn globally



Influence
300 sites

Indicative examples:





"Over the next 2 years, there will be United Nations decisions on Climate Change, Sustainable Development and a New Deal for Nature. Together these will form our species' plan for a route through the Anthropocene. What we do in the next few years will profoundly affect the next few thousand years."

Sir David Attenborough



ocean.panda.org