

Infrastructure Sustainability a shift of priorities towards lifecycle cost and maintenance

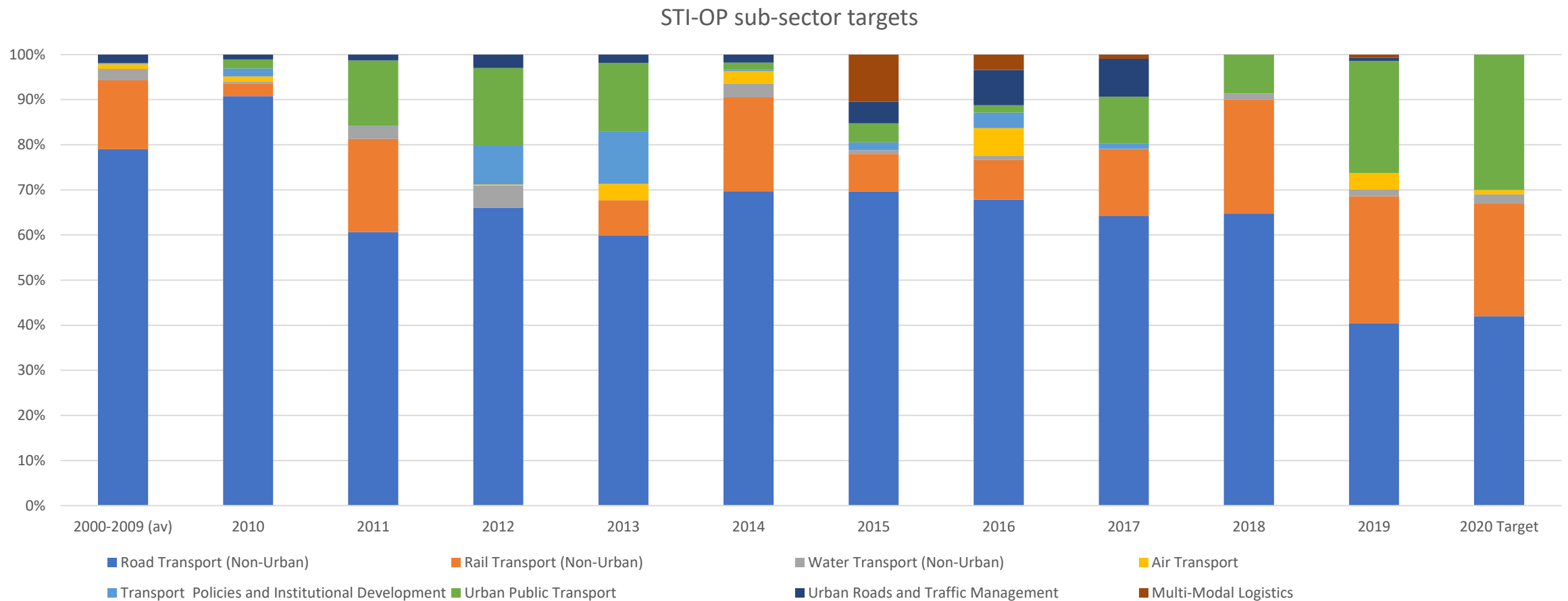
Jamie Leather, Chief of Transport Sector Group

The views expressed in this presentation are the views of the author/s and do not necessarily reflect the views or policies of the Asian Development Bank, or its Board of Governors, or the governments they represent. ADB does not guarantee the accuracy of the data included in this presentation and accepts no responsibility for any consequence of their use. The countries listed in this presentation do not imply any view on ADB's part as to sovereignty or independent status or necessarily conform to ADB's terminology.

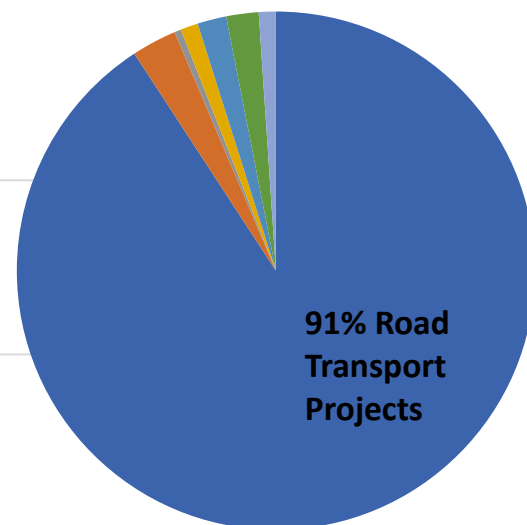


ADB Sustainable Transport Initiative

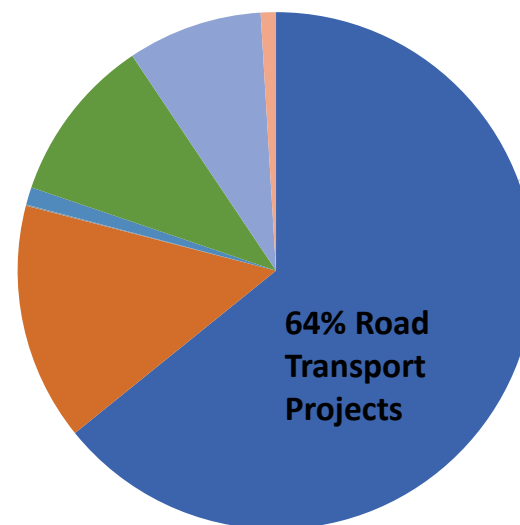
Growth in support for rail



2010 Sub-sector distribution



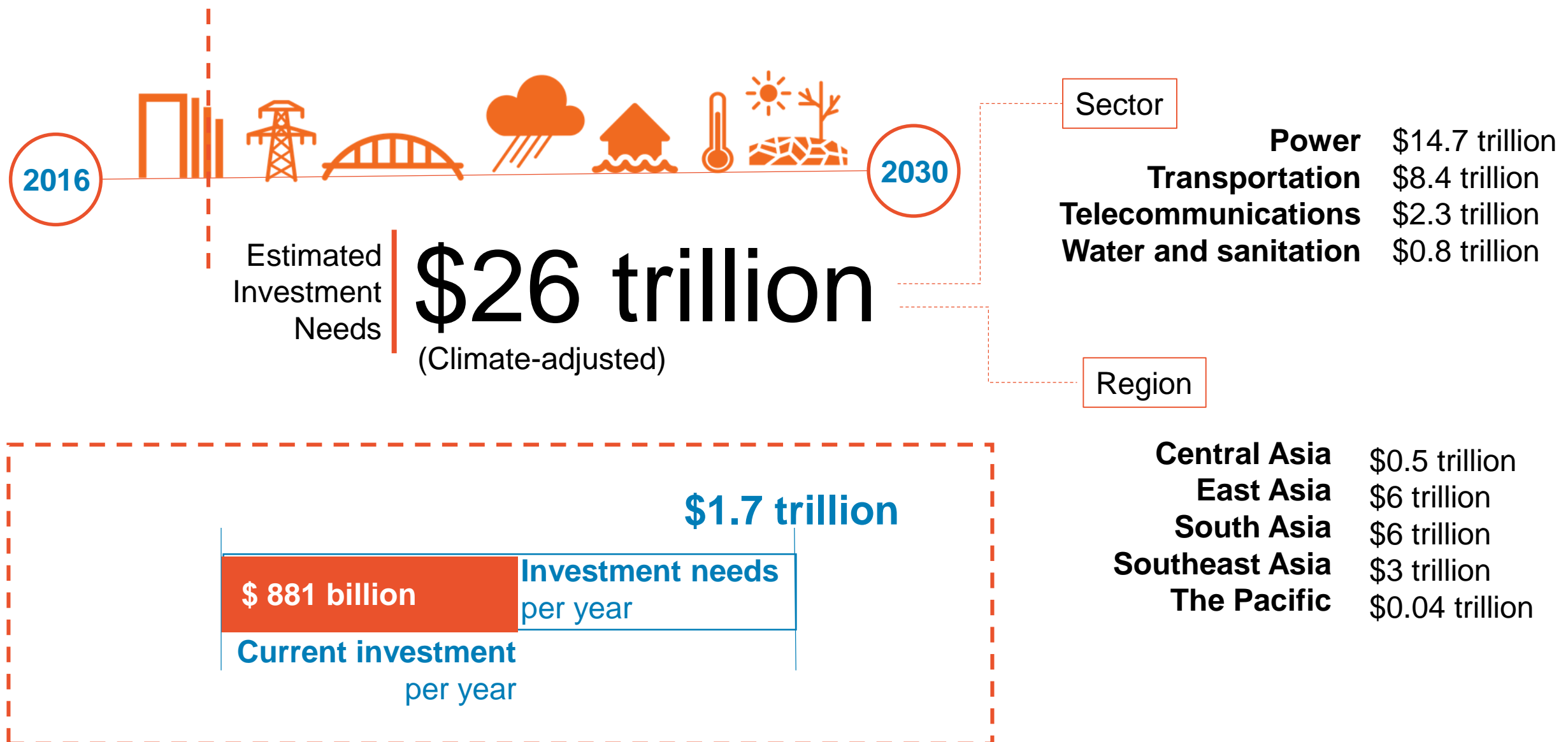
2017-18 Sub-sector distribution



The Asian Infrastructure Gap

Inadequate financing support for high-quality, high-capacity transport infrastructure and services

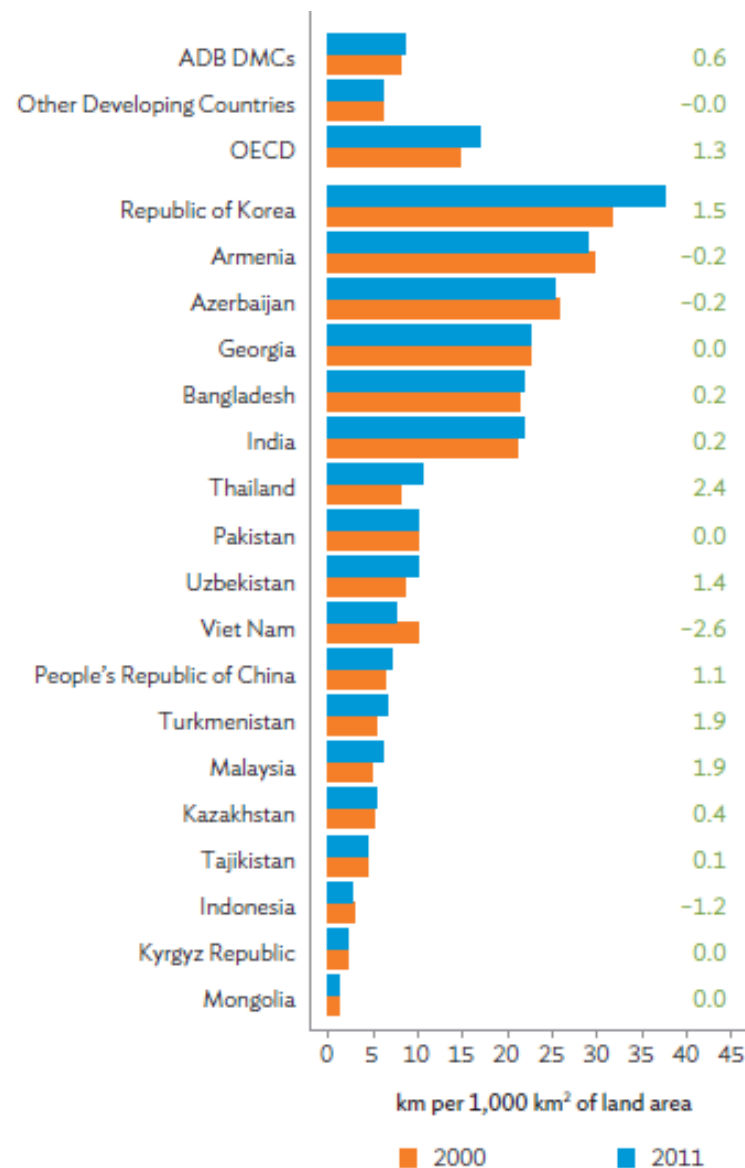
O&M even less well funded



Asia Railway needs

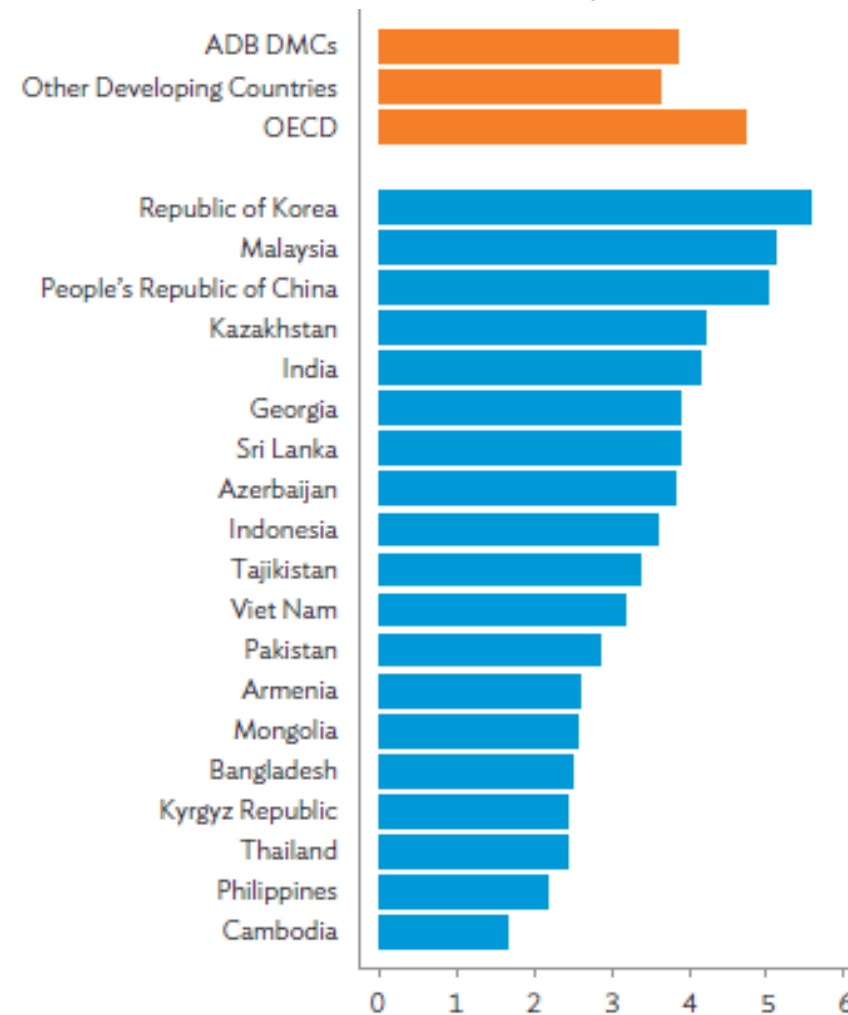
Rehabilitation, improved management and maintenance are key to improve railroad system standards and operations

Railroad Density and Growth (2015)



ADB = Asian Development Bank; DMC = developing member country;
 OECD = Organisation for Economic Co-operation and Development.
 Note: Figures in green refer to annualized growth rate (2000–2011).
 Regional averages are calculated with land area as weights.
 Source: World Development Indicators, World Bank.

Railroad Quality (2015)



ADB = Asian Development Bank; DMC = developing member country;
 OECD = Organisation for Economic Co-operation and Development.
 Note: Railroad quality is measured based on perception scores in a 7-point scale (higher scores mean better railroad quality).
 Regional averages of quality are calculated with length of railroad as weights.
 Source: World Economic Forum (2015).

Lifecycle cost, maintenance and operations

Lifecycle cost

- Construction and Operations considerations
- Broader assessment

Maintenance

- Maintenance contracts
- Integrated system development and operations

Operations

- Capacity development
- Efficiency gains
- Private sector involvement

Areas of Assistance changing

- Changing demands from clients
 - System management
 - Efficiency gains
 - Value addition
- Incorporate new technologies and uses
- Increased attention on private sector support
- Broader use of financial services to meet demands

Sample assistance

- GEO: Tbilisi Metro Extension and Rehabilitation (\$300m)
- THA: Bangkok Mass Rapid Transit Project (\$318m)
- AZE: Railway Sector Development Program (\$400m)
- BAN: Railway Rolling Stock Improvement (\$560m)



Thank you.

