



Spill-over effects of High-Speed Rail and Quality of Life
14-15 November 2018, ADBI, Tokyo Japan



Interoperable Conventional Intercity and HSR Station Location Identification Model

Sandeepan Roy and Avijit Maji

Presented by

Prof. Avijit Maji

Transportation Systems Engineering

Civil Engineering

IIT Bombay

This is not an ADB material. The views expressed in this document are the views of the author/s and/or their organizations and do not necessarily reflect the views or policies of the Asian Development Bank, or its Board of Governors, or the governments they represent. ADB does not guarantee the accuracy and/or completeness of the material's contents, and accepts no responsibility for any direct or indirect consequence of their use or reliance, whether wholly or partially. Please feel free to contact the authors directly should you have queries.

Background

- Important characteristics addressed while planning an HSR system (not limited to) :
 - Technical design details: type of HSR technology, rolling stock, choice of gauge
 - Operational characteristics: exclusive on grade separated right-of-way, shared right-of-way with existing conventional rail and/or freight.
- Generally operate on exclusive or grade separated right-of-way.
- In certain cases: infrastructure designed to facilitate movement of HSR on conventional intercity lines, or vice versa.
- This flexibility of operation: Interoperability.
- Typically observed when HSR corridor being designed coincides with existing conventional and/or freight corridor. Ex. AVE, Spain; ICE, Germany; Eurostar Italia



Underground HSR: Shenzhen-Hong Kong (Source: Google)

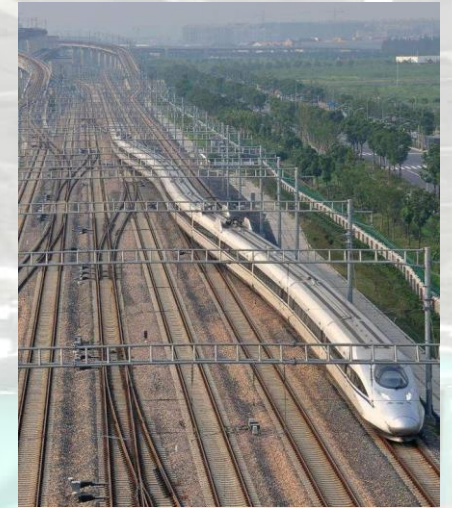


Elevated HSR: Beijing-Tianjin (Source: Google)

- Prerequisites for interoperability:
 - Common technical specifications like track gauge, signalling *etc.*
 - Existing spare line capacity
 - Appropriate facilities (such as stations) capable of serving HSR demand



Gauge



Spare Line capacity

- Advantages :
 - Ridership perspective: seamless mode transfer and accessibility benefits for the passengers
 - Operator perspective: reduction of infrastructure cost and optimized utilization of existing rail network



Passenger transfer

Underlying issues for Interoperability

- All existing stations:
 - May not satisfy the ridership potential, corridor length and inter-station spacing requirements necessary for HSR operation
 - Providing more stations increases the access to intermediate locations, which boosts ridership. However, this increases overall travel time. On the contrary, lesser number of stations or stops, reduces overall ridership of the HSR.
 - A trade-off or balance between both these objectives would yield the optimum number and location of HSR stations.

Problem Definition and Formulation

- Objective: **identify station locations which maximize ridership and connect the identified station locations in the shortest route possible** (Current et al. 1985)

$$\text{Max } Z_1 = \sum_{n=1}^{NS_{max}} \alpha_n * r_n$$

$$\text{Min } Z_2 = \sum_{i=1}^{NS-1} \sum_{j=2, j \neq i}^{NS} \sigma_{ij} * d_{ij}$$

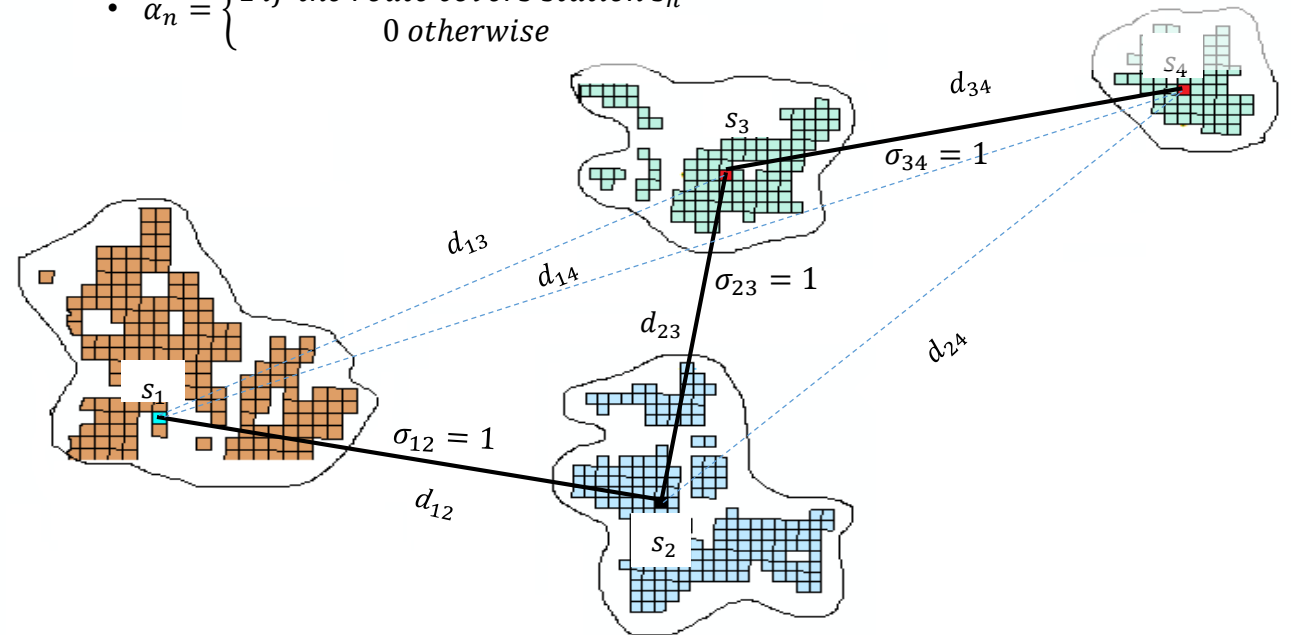
Combining both objectives into single objective problem using weightage method (Current et al. 1985; Zadeh 1963)

$$\text{Max } Z = \phi Z_1 / (1 - \phi) Z_2$$

Subject to

- $N_S = \sum_{i=1}^{NS_{max}} \alpha_i$
- $N_S \leq NS_{max}$
- $N_S \geq NS_{min}$
- $\sum_{i=1, i \neq j}^{NS-1} \sigma_{ij} = 1, j \in \{2, \dots, N_S\}$

- $\sum_{j=2, j \neq i}^{N_S} \sigma_{ij} = 1, i \in \{1, 2, \dots, N_S - 1\}$
- $\sum_{i=1}^{N_S-1} \sum_{j=2, i \neq j}^{N_S} \sigma_{ij} = N_S - 1$
- $d_{n,m} \geq IDS_{min} : \forall \alpha_n = 1, \alpha_m = 1, m = n + 1$
- $Z_2 \leq TDS_{max}$
- $\sigma_{ij} \in [0, 1]$
- $\alpha_{ij} \in [0, 1]$
- $0.05 \leq \phi \leq 0.95$
- $\sigma_{ij} = \begin{cases} 1 & \text{if the route goes from station } s_i \text{ to } s_j \\ 0 & \text{otherwise} \end{cases}$
- $\alpha_n = \begin{cases} 1 & \text{if the route covers station } s_n \\ 0 & \text{otherwise} \end{cases}$



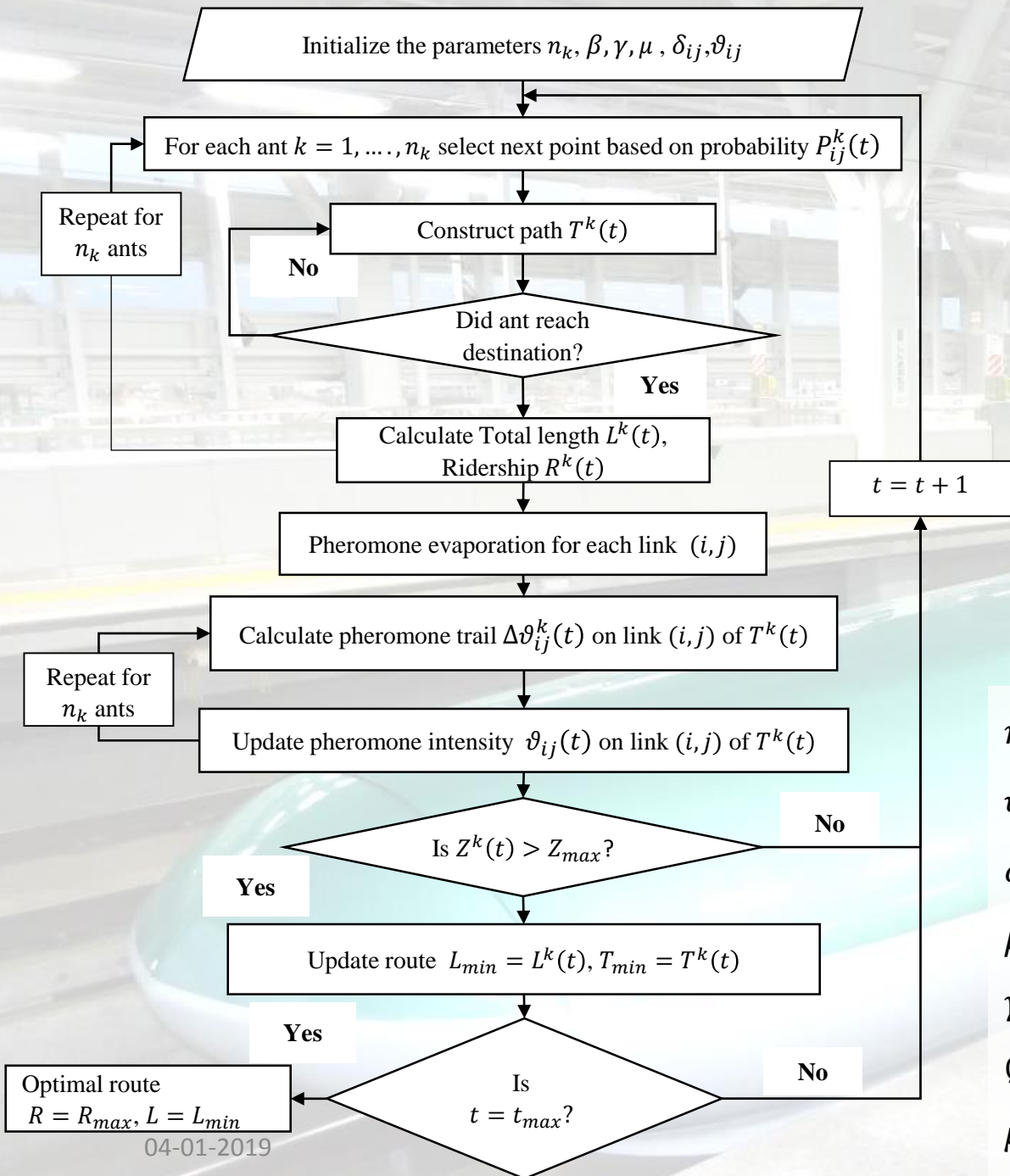
Visual Representation for Problem

Problem definition and Literature Review

- No exclusive literature on HSR
- Shares common features with bus and rail transit design problem, with similar objectives and constraints
- Analytical optimization:
 - Applied to predetermined transit route networks to determine one or few design parameters
 - Successful for problems with smaller networks or lesser decision variables, but their performance efficiency decreased for networks with realistic size, having many parameters
- Meta heuristics:
 - Simultaneously dealt with design of the transit route along with associated parameters

Analytical optimization	Meta heuristics
Vuchic (1969, 1972) Lesley (1976), Wirasinghe and Ghoneim (1981), Saka (2001) Newell (1979), Leblanc (1988), Boffey and Narula (1998), Current and Schilling (1989, 1994), Hachicha et al. (2000), Wu (2005)	Lampkin and Saalmans (1967), Rea (1971), Silman et al. (1974), Dubois et al. (1979), Ceder and Wilson (1986), Ceder and Israeli (1998), and Laporte et al. (2005). Artificial intelligence-based Hasselstrom (1981), Van Nes et al. (1988), Baaj and Mahmassani (1991), and Shih et al. (1998a, b) Genetic algorithm-based Pattnaik et al. (1998), Chien et al. (2001), Fan and Machemehl (2004) Simulated annealing-based Fan and Machemehl (2005) and Yan et al. (2013)

Solution Methodology : Ant Colony Optimization



$$\delta_{ij}(t) = (r_i + r_j)/d_{ij}$$

$$P_{ij}^k(t) = \begin{cases} \frac{[\vartheta_{ij}(t)]^\beta [\delta_{ij}(t)]^\gamma}{\sum_{u \in N_i^k(t)} [\vartheta_{iu}(t)]^\beta [\delta_{iu}(t)]^\gamma} & \text{if } j \in N_i^k(t) \\ 0 & \text{if } j \notin N_i^k(t) \end{cases}$$

$$\Delta\vartheta_{ij}^k(t) = \frac{\varnothing R^k(t)}{(1-\varnothing)L^k(t)}, (i,j) \in T^k(t) \text{ (Contribution of this study)}$$

$$L^k(t) = \sum_{i,j=i+1}^{N_s-1} d_{ij}, (i,j) \in T^k(t)$$

$$R^k(t) = \sum_i^{N_s} r_i, i \in T^k(t) \text{ (Contribution of this study)}$$

$$\vartheta_{ij}(t+1) = (1-\mu)\vartheta_{ij}(t) + \sum_{k=1}^{n_k} \Delta\vartheta_{ij}^k(t)$$

n_k = number of ants

ϑ_{ij} = pheromone intensity between locations (i, j)

δ_{ij} = visibility or attractiveness of the of location j from location i

β = constant used to amplify the influence of pheromone intensity

γ = and increase the attractiveness towards other locations

\varnothing = weightage factor

μ = evaporation rate

N^k = set of feasible locations connected to location i with respect to ant k

Case Study & Data Collection

- Mumbai-Ahmedabad HSR Corridor
- India's 1st HSR Line
- 28 major stations in total between Mumbai and Ahmedabad
- Number of intercity OD pairs and cities:

Threshold value of population for cities for HSR implementation: 500,000 (Takeshita, 2012). Population data extracted from website of the Census of India in spreadsheet table format.

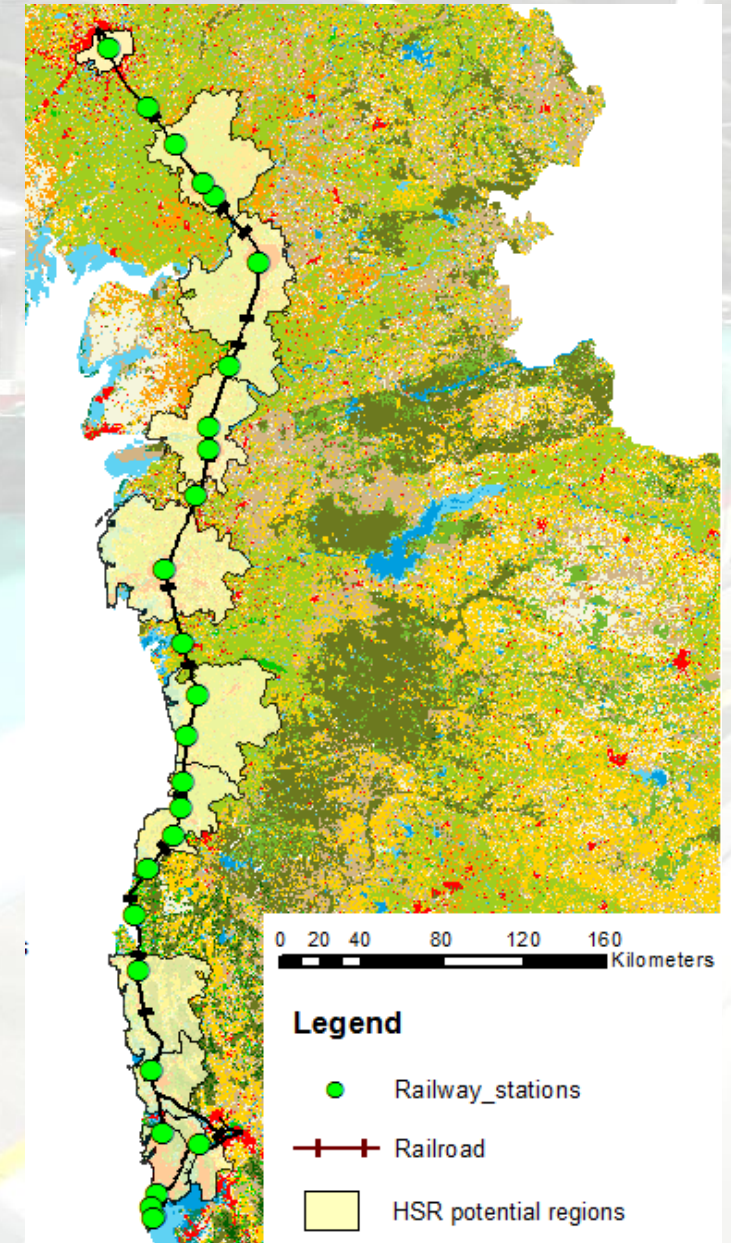
A Python based search program was created to identify sub districts and cities that had the estimated population level over the threshold value

11 regions (sub-districts and cities) were identified in the Mumbai-Ahmedabad corridor: Ahmedabad, Anand, Bharuch, Vadodara, Surat, Valsad, Vapi, Thane, Boisar, Vasai-Virar, and Mumbai.

- GIS Shapefiles:

Source: Open Street Maps [2017]

Point shapefiles: locations, transportation points (bus stops, railway stations)



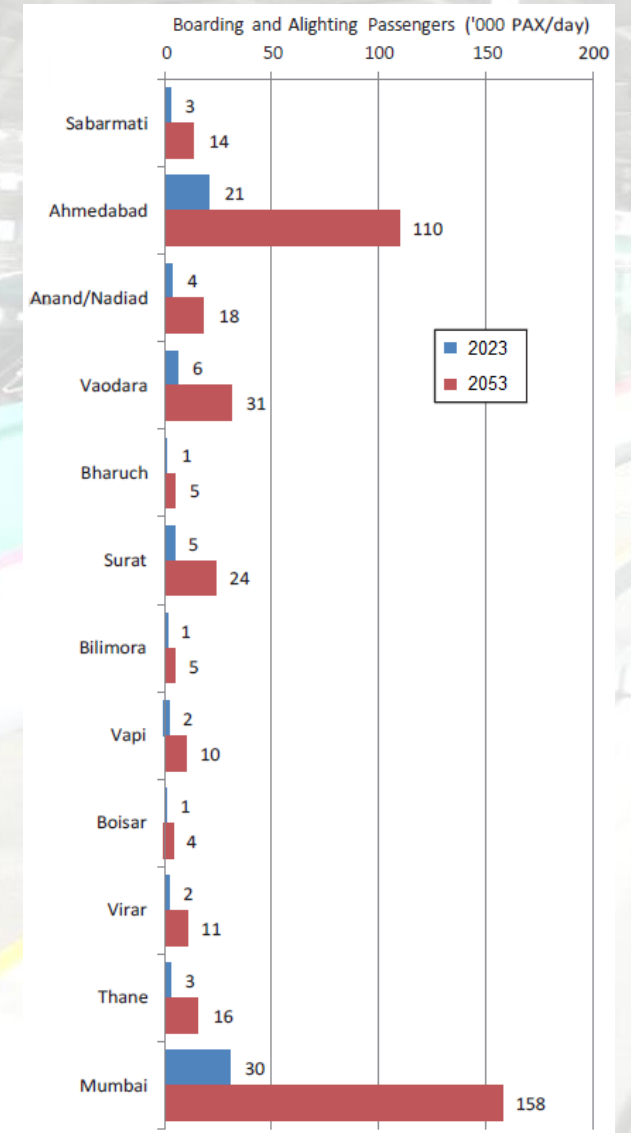
Data Collection

- Ridership data:

Taken from report on the Joint Feasibility Study for Mumbai-Ahmedabad High Speed Railway Corridor (2015) prepared by JICA for horizon year 2023.

Table 1. Input Parameters

Input parameters	Values	Source
Factors controlling trail β	1.0	Brezina and Cickova, 2011
Factors controlling visibility γ	2.0	
Pheromone evaporation rate τ	0.5	
Number of ants n_k	500	Assumed
Maximum number of generations	400	Assumed
Distance between Consecutive Stations IDS_{min}	24km	Stanford Research Institute, 1968
Maximum Distance between Terminal Stations TDS_{max}	800km	Takeshita, 2012
Minimum Number of Stations in the Corridor NS_{min}	2	Assumed
Maximum Number of Stations in the Corridor NS_{max}	11	RITES, 2013; JICA, 2015



Results

- Proposed model was run by varying the values of weightage factor \emptyset for sufficient number of iterations until the results converged
- With increase in travel distance, access and ridership coverage increases, and vice versa.
- When \emptyset changes from 0.35 to 0.4, 0.7 to 0.75: significant change in travel distance, ridership and access coverage (number of stations)
- \emptyset variation between 0.4 to 0.7 provides a reasonable trade off as the variation in travel distance with ridership and access coverage is significantly less within this range

Table Ridership coverage and travel distance trade-off

Weightage \emptyset	Ridership covered Z_1 (pass./day)	Travel distance Z_2 (km)	Ridership per distance unit	Number of stations
0	53000	421.48	125.7474	3
0.05	53000	421.48	125.7474	3
0.10	59000	422.96	139.4931	5
0.15	59000	422.96	139.4931	5
0.20	59000	422.96	139.4931	5
0.25	59000	422.96	139.4931	5
0.30	59000	422.96	139.4931	5
0.35	59000	422.96	139.4931	5
0.40	72000	445.70	161.5436	9
0.45	72000	445.70	161.5436	9
0.50	72000	445.70	161.5436	9
0.55	73000	448.29	162.841	10
0.60	73000	448.29	162.841	10
0.65	73000	448.42	162.7938	10
0.70	73000	448.42	162.7938	10
0.75	76000	472.69	160.7819	11
0.80	76000	472.69	160.7819	11
0.85	76000	472.69	160.7819	11
0.90	76000	472.69	160.7819	11
0.95	76000	472.69	160.7819	11
1.00	76000	473.982	160.3436	11



0 20 40 80 120 160 Kilometers

Legend

- +— Railroad
- HSR station selected

Conclusion

- Integrated interoperable rail systems facilitate movement of high speed rail (HSR) trains on conventional intercity lines, or vice versa
- Preferred that HSR station are at existing intercity rail station locations
- All existing intercity stations may not satisfy the ridership potential, corridor length and inter-station spacing requirements necessary for HSR operation
- A trade-off or balance must be obtained between ridership, access coverage and travel distance/time
- Geographical Information System (GIS) based interoperable HSR station location identification approach along existing intercity rail
- A combined ridership maximization and travel distance/time minimization formulation is developed using weightage method
- Threshold inter-station travel time/distance between intended station locations, total end to end corridor travel distance/time and threshold population used as constraints
- Ant colony as the heuristic method to optimize the formulated problem
- Required trade-off necessary for designing an interoperable HSR system obtained for weightage factor variation between 0.4 to 0.7

A high-speed train, possibly a Shinkansen, is shown at a station platform. The train is white with a teal stripe and a red stripe. The platform has a yellow safety line. The background shows the station structure with white pillars and a glass roof.

THANK YOU

Sandeepan Roy

Email: sandeepanroy1991@gmail.com

Prof. Avijit Maji

Email: avijit.maji@gmail.com