



**Special
Olympics**



Special Olympics Overview

July 2018

This is not an ADB material. The views expressed in this document are the views of the author/s and/or their organizations and do not necessarily reflect the views or policies of the Asian Development Bank, or its Board of Governors, or the governments they represent. ADB does not guarantee the accuracy and/or completeness of the material's contents, and accepts no responsibility for any direct or indirect consequence of their use or reliance, whether wholly or partially. Please feel free to contact the authors directly should you have queries.



Special Olympics is an everyday,
everywhere
movement **changing the world**
for people with and without
intellectual disabilities.

For 50 years, Special Olympics has been
building a movement to break down
barriers – both on and off the field in
health and education – all through the
power of sport.

A photograph of two male athletes running on a red track. The athlete in the foreground is wearing a white tank top with the number 4 and black shorts, with his right arm raised in celebration. The athlete behind him is wearing a red and yellow singlet with the number 6 and red shorts. A rainbow graphic is on the left side of the image.

Our Assets & Reach

- ✓ Annually serve **5M+** children and adults with **intellectual disabilities**
- ✓ Presence in **172 countries**
- ✓ **Largest organization** representing individuals with intellectual disabilities
- ✓ Year-round activation through **108,000+** local events annually
- ✓ Driven primarily by a committed **volunteer** workforce
- ✓ **World Summer and Winter Games** designed to leave lasting **legacy of inclusion** in host country

The Problem

200+ million people with Intellectual Disabilities (ID) face ongoing discrimination in healthcare, schools, communities and employment. Studies have found:

- ✓ People with ID **die 16 years prematurely** because of undiagnosed and untreated conditions.
- ✓ Children with disabilities were **two to three times more likely to be bullied** than their peers without disabilities.
- ✓ In most countries, the percentage of individuals with intellectual disabilities gainfully employed are **3-4 times less than the general population**.
- ✓ As many as **68% of female adolescents** with intellectual disabilities have been abused before the age of 18.



Disparities

Healthcare

- Many health issues of people with ID remain hidden due to diagnostic overshadowing, where health problems are falsely attributed to a person's intellectual disability.
- Individuals with ID are twice as likely to be obese, have cardiovascular disease and asthma, 3 times as likely to have diabetes and 5 times as likely to have arthritis than the general population.
- 56% of medical and dental school deans report that graduates of their programs are simply “not competent” to treat people with ID and more than half of students agree.

Education

- Low expectations, discriminatory policies and social stigma keep children with ID from accessing educations and reaching their full potential.
- Primary school completion for children with disabilities in 19 developing countries* is just 48 percent, and as many as three in ten children with disabilities have never been in school.

Employment

- Despite the focus on Diversity and Inclusion, there is a distinct lack of opportunities for people with ID to work. Yet 85% of people with ID have a mild disability.





Our Approach

Sports as a vehicle for change...

- We facilitate inclusive early childhood development which improves school readiness and access
- We promote acceptance and unite youth through inclusive intra and extra mural sports
- We reduce the health disparities between people with ID and those without ID, saving lives and strengthening health systems
- We empower youth to be future, inclusive leaders of change through learning and play.
- We position athletes to lead by providing the skills and training needed to secure meaningful opportunities in communities and the workplace.



OUR VISION

That all communities and cities are **ACTIVE** and **INCLUSIVE** of individuals with intellectual disabilities.

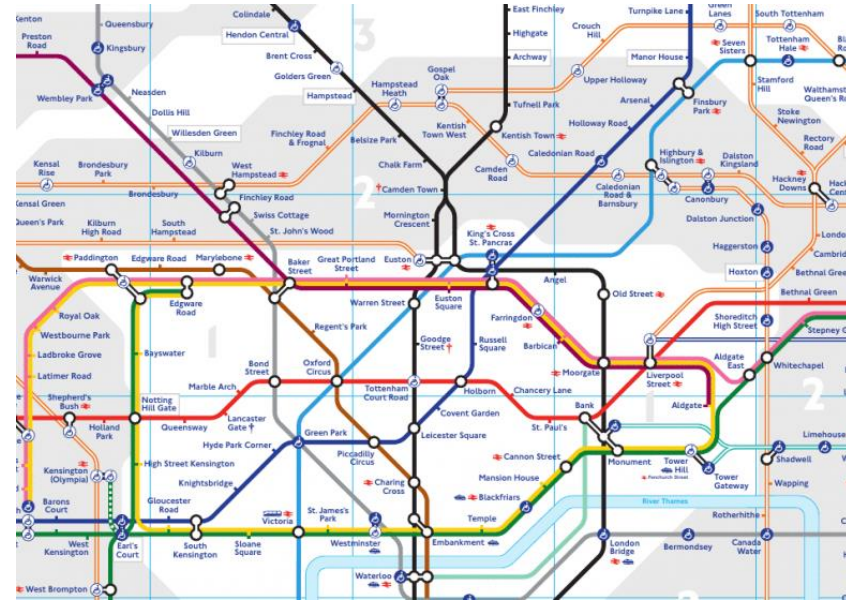
Because those are **SMART CITIES**



Disabled ramp
access this way



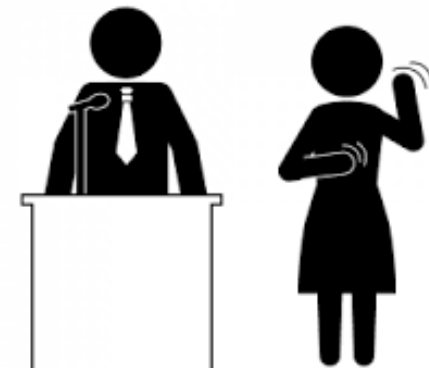
Toilets



Disabled
parking only



Guide dogs
welcome



Components

- ✓ Individuals with ID involved in **consultation and planning**
- ✓ Equitable, inclusive **employment**
- ✓ Equitable, inclusive **public services**
- ✓ Accessible facilities to sustain **physical activity**
- ✓ Inclusive **healthcare** services
- ✓ Inclusive **education and ECD** services
- ✓ Representation on **governance** structures
- ✓ Appropriate, affordable **housing** opportunities
- ✓ **Policies and attitudes** that foster inclusion







