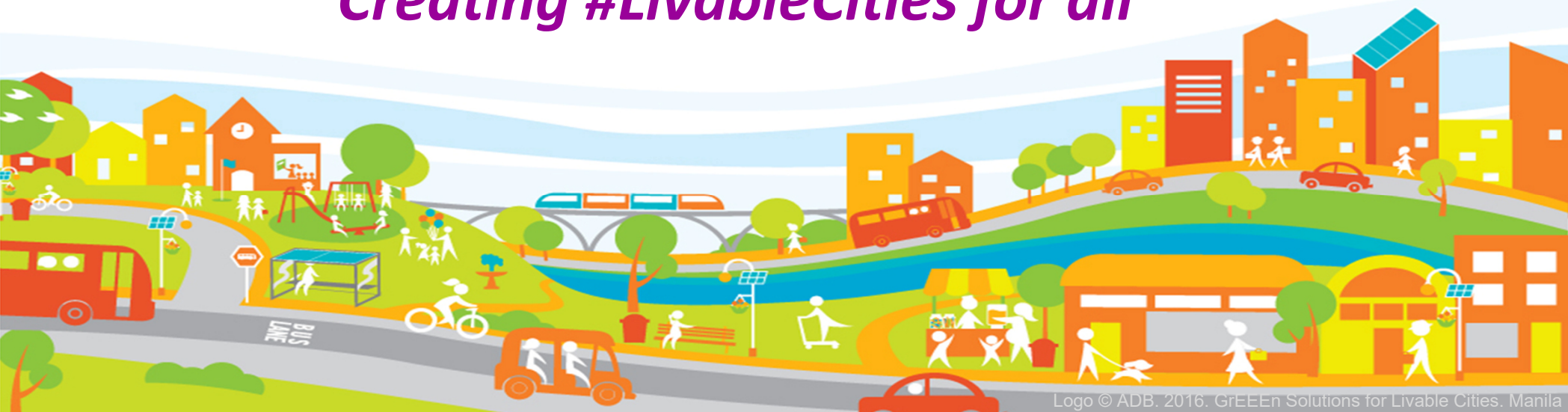


Asian Development Bank
TA 9220: LIVABLE URBAN AREAS - Integrated Urban Plans for Balanced Regional
Development

GENDER IN URBAN PLANNING, 24 APRIL 2018, TBILISI GEORGIA

Creating #LivableCities for all



Ramola Naik Singru

Senior Urban Development Specialist
Asian Development Bank



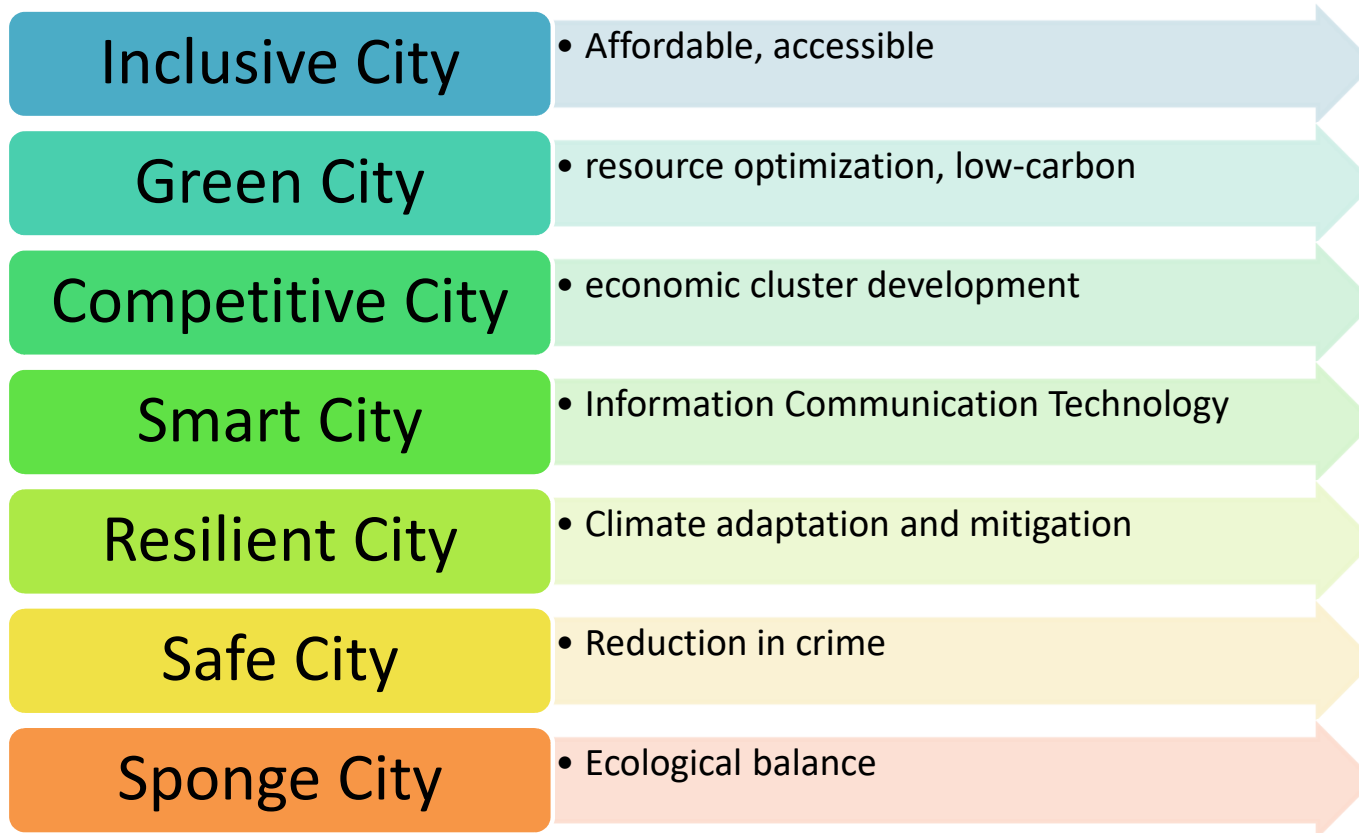
[@RamolaNS](https://twitter.com/RamolaNS) email: rsingru@adb.org



The contents of the material is based on work in progress and initial assessments from the ongoing implementation of technical assistance, *Livable Urban Areas: Integrated Urban Plans for Balanced Regional Development in Georgia*. Please feel free to contact the author directly, should you have queries.



Path to Livability – Citizen’s perspective



From Vision to Planning:

1. Economy → Competitiveness



2. Environment → Sustainability



3. Equity → Inclusiveness



TA 9220-GEORGIA: LIVABLE URBAN AREAS:

Integrated Urban Plans for Balanced Regional Development

1. Integrated Urban Action Plans (IUAPs)

Visioning and participatory planning

Urban Area Clusters - Economic corridors, Tourism clusters, Agribusiness

Investment Program preparation and preparedness

Inclusive Cities Guidelines for adaptation of the built environment for the differently-abled, elderly, youth, women and children

2. Urban Management Partnerships (UMPs)

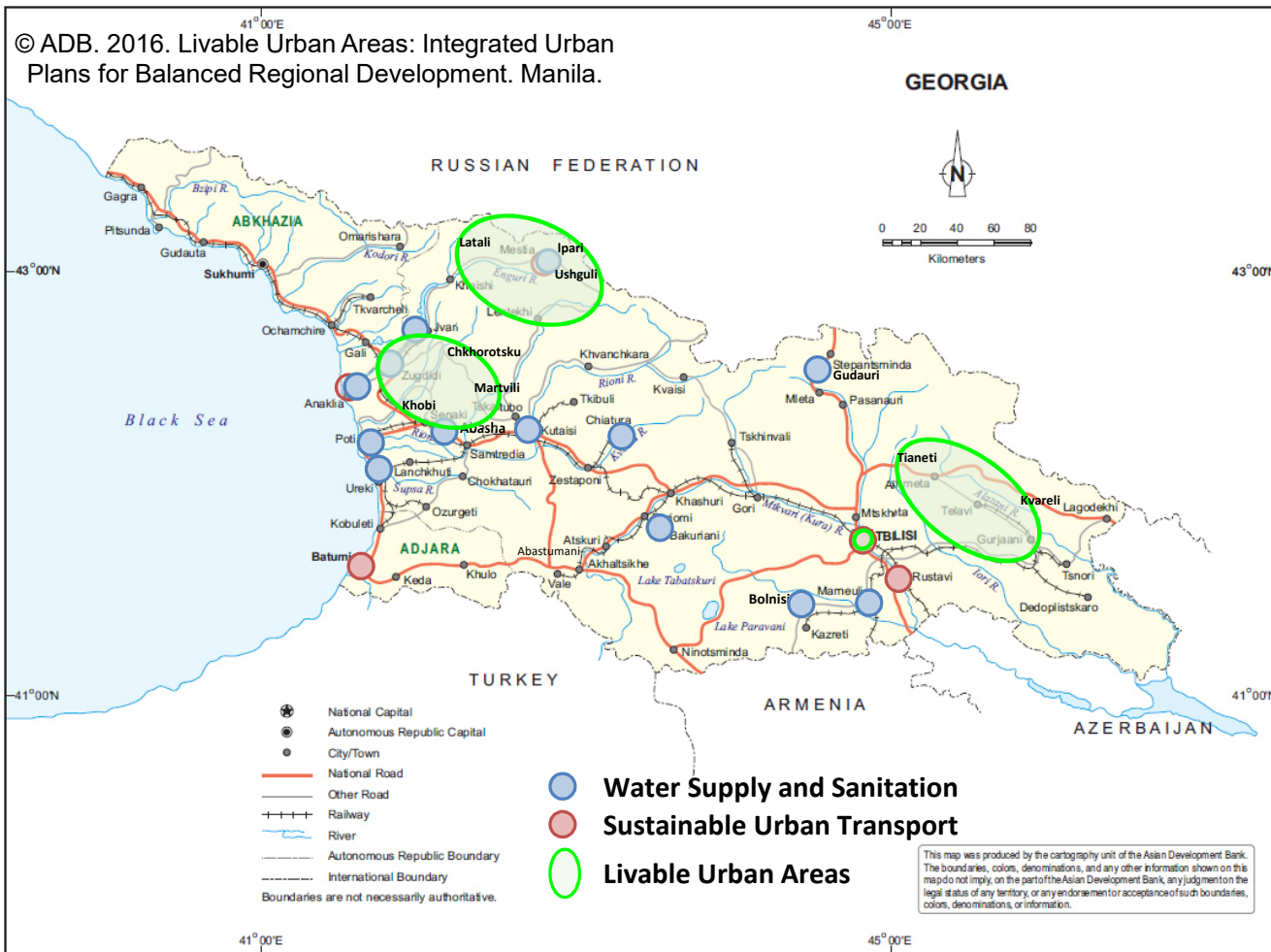
Identifying areas for strengthening of urban service delivery

Peer- to-peer / city-to-city learning partnerships

3. Institutional and Financial Sustainability Mechanisms

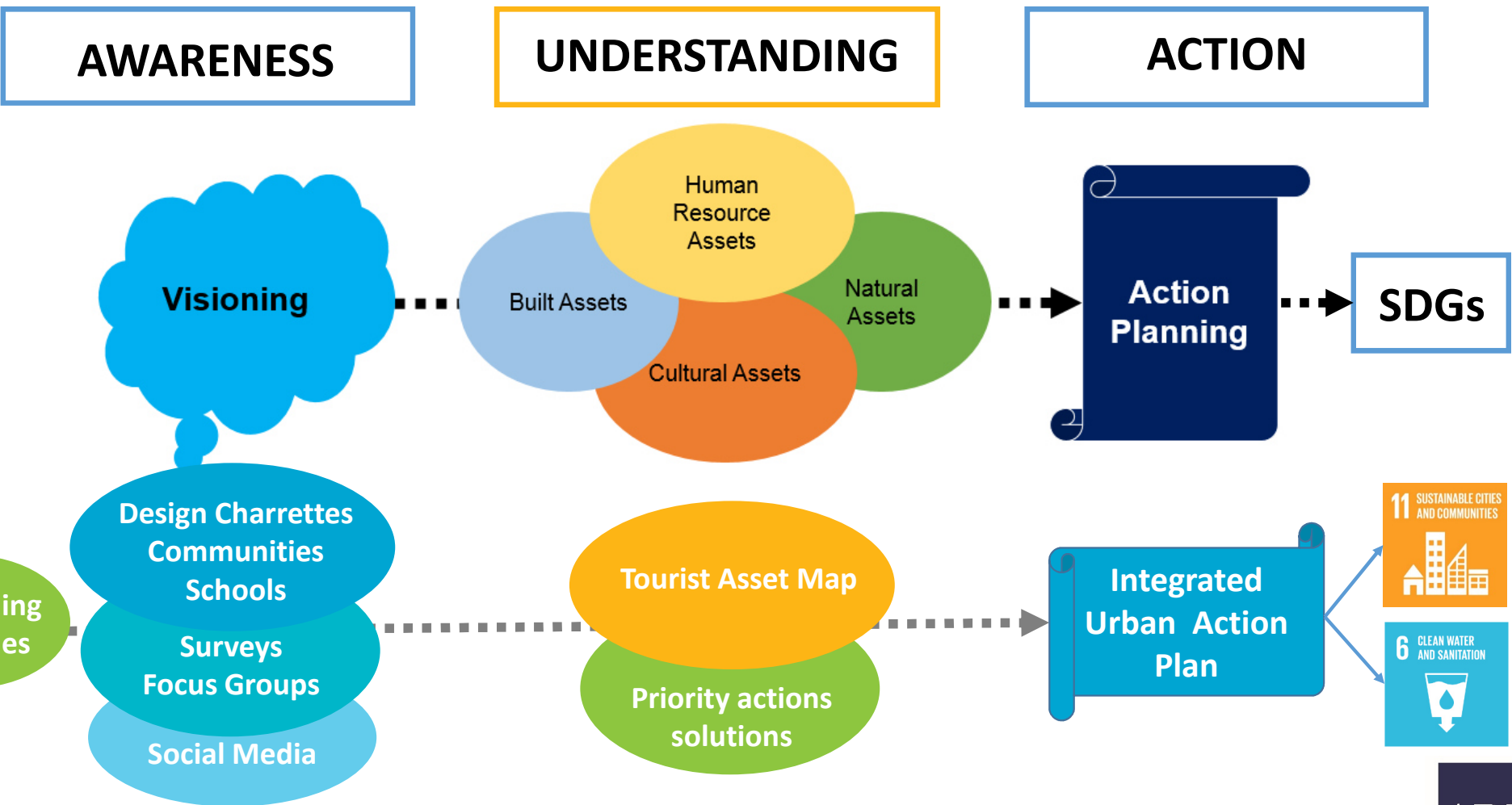
Capacity building assessments, financial sustainability, community awareness needs for sustainable development, citizen's accountability

Investment Programming



©Naik Singru. R. 2017. ADB TA 9220-GEO: Livable Urban Areas. Presentation.
30 Oct-7 Nov 2017, Interim Mission TA 9220, Georgia

City Visioning for Inclusive Urban Development Process – entry points for gender mainstreaming



Naik Singru. R. 2017. Adapted from S. Sandhu, R. Naik Singru, J. Bachmann, S. Vaideeswaran, P. Arnoux. 2016. *GrEEEn Solutions for Livable Cities*. ADB: Manila. <http://www.adb.org/publications/green-solutions-livable-cities>



Livable Cities – engage stakeholders on gender aspects at every important project stage



ZUGDIDI		MESTIA		TELAVI	
2	12	21	17	8	21
12	16	11	9	24	9

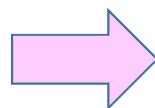
SWOT & City Visioning Workshops

Project Prioritization Workshops

Investment Planning Workshops

Women's role in decision-making is limited

- low level of representation of women in Parliament and municipalities (16%)
- fewer managerial roles
- lower salaries



LIVABLE CITIES APPROACH
Participatory Planning approach at the grassroots level

City Visioning, SWOT analysis and Focus Group Discussions



	Strengths	Weaknesses	Opportunities	Threats
1	Existing legislation <ul style="list-style-type: none"> • Constitution • Law of Georgia on Gender Equality 	Law enforcement	Increased actuality of gender issues;	Law enforcement;
2	Strong Civil Society <ul style="list-style-type: none"> • NGOs • International Organizations • Gender Council at the local municipality 	Misinformation Gender misbalance among: <ul style="list-style-type: none"> • Decision makers; • Employed 	Increased interest towards gender issues Gender Council of the local municipality to play active role	Religious extremism
3	Existence of Trainings and workshops	Cultural stereotypes	Strengthening of gender sensitive education	Gender discrimination
4	Increase of education accessibility: <ul style="list-style-type: none"> • General education; • Gender sensitive education; 	Cultural mentality Lack of Education	Information awareness Improved access to education, TVET	Social pressure
5		General unemployment in the Region Gender sensitive migration	Targeted support for livelihood development	
6		Gender insensitive budget	EU integration	
7		Gender violence	Behavior Change campaign	
8		Unequal distribution of work	Skills development	
9		Bad living conditions	Improved urban services	

Gender opportunities – *Tourism and Hospitality*

34

- % women breadwinners - traditional perceptions (men - breadwinners; women - homemakers).

50

- % female participation in tourism and hospitality industry

64

- % accommodation units are family hotels, guesthouses or hostels.

- Women better skilled for hospitality roles given traditional roles – managers, marketing and Public Relations (PR) specialists, administrators, cooks, and housekeepers

- % hotel businesses owned by women

36

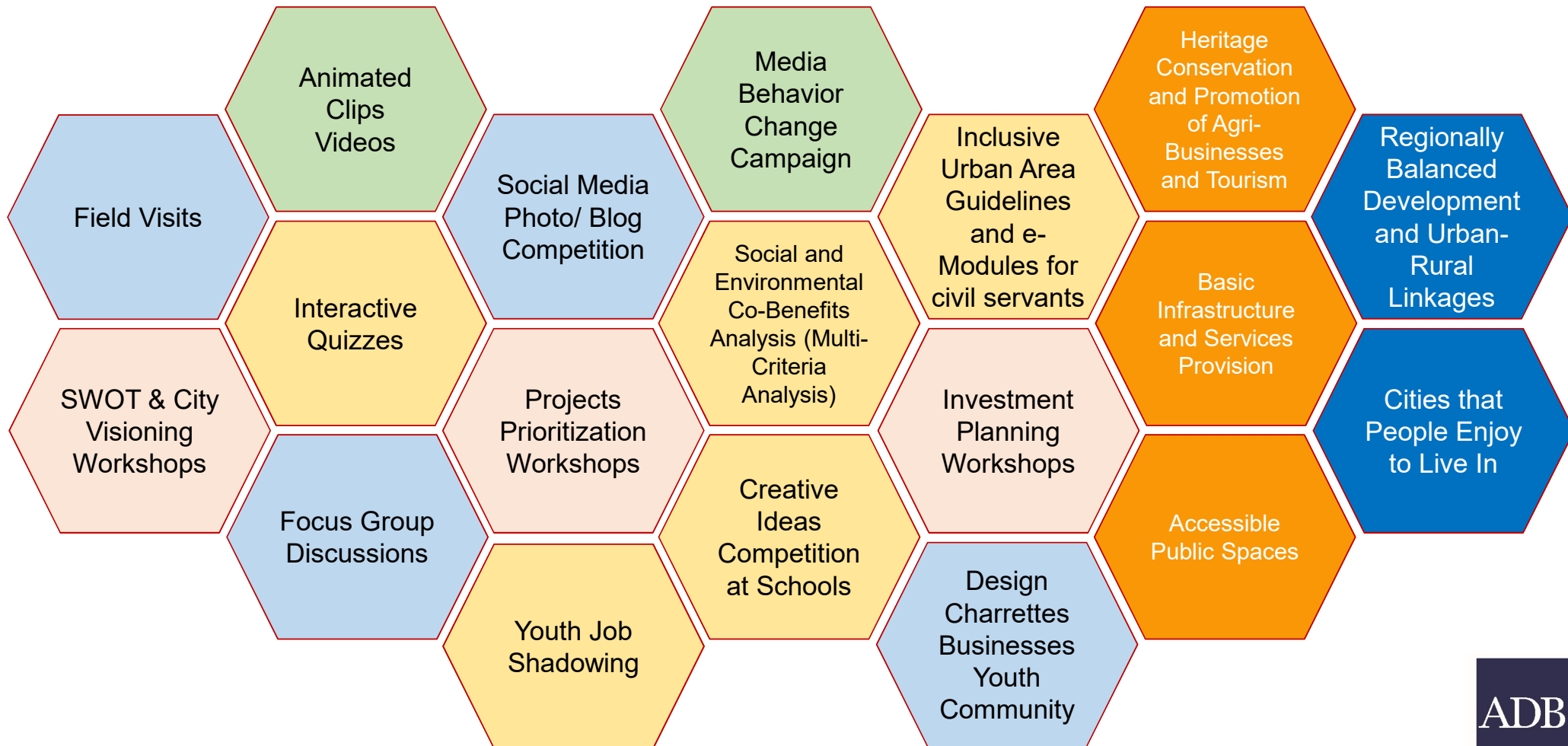
Livable Cities – *Inclusive Cities Guidelines*

- (i) **inclusive urban area guidelines** for adapting the built environment for differently-abled persons, senior citizens, women, youth, and children integrating **gender aspects and universal design principles**,
 - accessibility,
 - affordability
 - resilience for urban infrastructure
 - accessible tourism and connectivity
- (ii) **e-learning modules** based on these guidelines
 - pilot training provided for capacity building of government staff and other stakeholders.

Gender aspects in Integrated Urban Action Plans

	Proposed Solutions
Women's capacity building centers to support female skills development	Establishment and operation of female-targeted training centers – TVET - to develop employment opportunities for women in various sectors, e.g. Public Transport, culinary school, hospitality management,
Multi-purpose buildings	Rehabilitation and re-profiling multi-purpose buildings to address skills development based on interests of males and females of various groups (age, income, ethnicity, religion, disability, etc.) – market place, souvenir making
Tourism/Hospitality Business Incubators for Women	Establishment of female-targeted tourism/hospitality business incubators for tourism development in cluster areas including access to finance
Gender Information Centers	Establishment and operation of Gender Information Centers for two-way information flow on gender-sensitive aspects of Projects during their preparation and implementation
Accessible Comfort Stops on Travel Routes	Establishment of inclusive comfort facilities on travel/tourist routes - public toilets, waste containers, baby care rooms and play rooms for kids, kiosks, information boards, etc. along the travel routes to address the interests of male and female travelers/tourists of different age groups, with disabilities, etc.

Livable Cities – are systematically built through interlinkages



REFERENCES

GREEN SOLUTIONS for LIVABLE CITIES

S. Sandhu, R. Naik Singru, J. Bachmann, S. Vaideeswaran, P. Arnoux.(2016). *GrEEEn Solutions for Livable Cities*. Manila: ADB. <http://www.adb.org/publications/green-solutions-livable-cities>

REALIZING THE URBAN POTENTIAL IN GEORGIA: National Urban Assessment

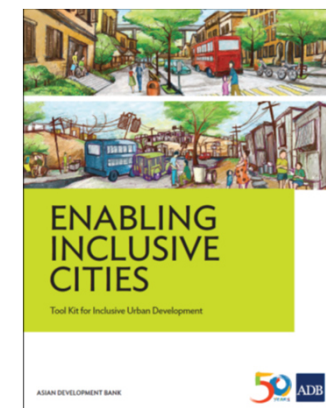
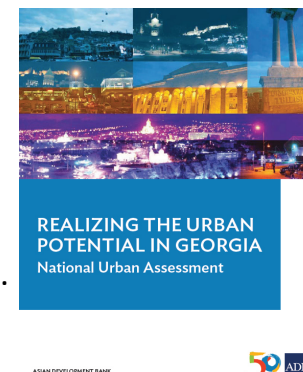
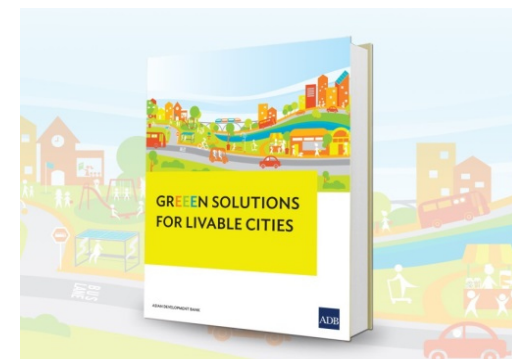
- Naik Singru, R., Vaideeswaran. S and J. Salukvadze. 2015. *Realizing the Urban Potential in Georgia: National Urban Assessment*. ADB: Manila. <https://www.adb.org/documents/realizing-urban-potential-georgia-national-urban-assessment>

Toolkits

- Naik Singru, R. and M. Lindfield. 2016. *Manual for Undertaking National Urban Assessments*. ADB: Manila. <https://www.adb.org/documents/manual-undertaking-national-urban-assessments>
- Naik Singru, R. and M. Lindfield. 2016. *Enabling Inclusive Cities: Tool Kit for Inclusive Urban Development*. ADB: Manila. <https://www.adb.org/documents/enabling-inclusive-cities>

GrEEEn City Action Plans (GCAPs)

- [Hue GrEEEn City Action Plan 2015](#)
- [IMT-GT Melaka Green City Action Plan 2014](#)





Asian Development Bank
TA 9220-GEORGIA: LIVABLE URBAN AREAS:
Integrated Urban Plans for Balanced Regional Development

GENDER IN URBAN GOVERNANCE AND TRANSPORT, 24-25 APRIL 2018, TBILISI GEORGIA

Thank You

გმადლობთ

Ramola Naik Singru
ADB Headquarters, Manila

rsingru@adb.org

Tea Papuashvili
ADB Georgia Resident Mission

tpapuashvili@adb.org

