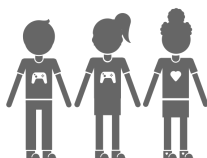




Tackling Global Challenges

Educational Inequity:

- **263 million children and youth** are unable to attend school
- **617 million children and youth** are not achieving minimum proficiency in reading and mathematics



Lack of Access:

- **Less than half of the world** is online



This is not an ADB material. The views expressed in this document are the views of the author/s and/or their organizations and do not necessarily reflect the views or policies of the Asian Development Bank, or its Board of Governors, or the governments they represent. ADB does not guarantee the accuracy and/or completeness of the material's contents, and accepts no responsibility for any direct or indirect consequence of their use or reliance, whether wholly or partially. Please feel free to contact the authors directly should you have queries.



Implementing around the Globe

In 2012, Learning Equality launched KA Lite — now providing local, offline access to Khan Academy content for **4,500,000 learners** in over **194 countries and territories**.

Informal Learning



Orphanages



Rural Schools



Prisons



Refugee Camps





Introducing Kolibri

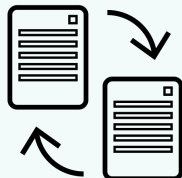


Kolibri is an open-source ed-tech platform and toolkit designed for multiple contexts, focused on:

- fostering **innovative pedagogy** and effective **learning outcomes**
- increasing the availability of **relevant, aligned learning materials**
- overcoming **infrastructural barriers** preventing equitable access



Wide variety of
hardware
(legacy/low-cost)



Seamless content
and data syncing



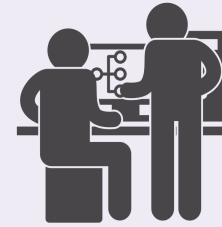
Open content library
+ curation tools



No Internet
required

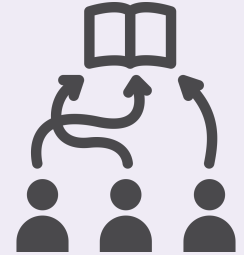
Tools for Adaptive Curriculum

Kolibri allows for **curators** to **tailor** the content available to learners, allowing them to **mix and match content** already available in the Kolibri library, **or create their own**.



Content curation
for aligning to
standards

Tools to create
learning pathways

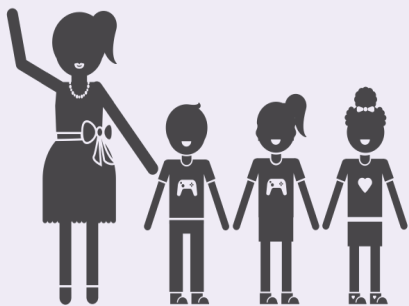


Centralized content
repository for a
variety of topics



Self-Paced and Blended Learning Models

Kolibri allows for **students** to **learn at their own pace**, while providing **teachers (or other mentors)** with tools and support for **facilitating blended learning** — all in an **offline** setting.



Self-paced and
blended learning



Tools to understand
student progress



Training toolkit to
support teachers
and implementers

Kolibri in practice



Computer lab model (Uganda)



Home access
via free mobile
data (Ghana)



Classroom with laptop
server & tablet client
devices (India)