

The views expressed in this presentation are the views of the author/s and do not necessarily reflect the views or policies of the Asian Development Bank, or its Board of Governors, or the governments they represent. ADB does not guarantee the accuracy of the data included in this presentation and accepts no responsibility for any consequence of their use. The countries listed in this presentation do not imply any view on ADB's part as to sovereignty or independent status or necessarily conform to ADB's terminology.

Poverty and Social Analysis Training

MYA: Mandalay Urban Services Improvement Project

10 October 2017

Eri Honda, Principal Urban Development Specialist, SEUW

Project Processing History

- ▶ ADB conducted a Scoping Study “Towards A Green Mandalay” from October 2013 to March 2014
- ▶ ADB started PPTA to prepare the Mandalay Urban Services Improvement Project (MUSIP) in March 2014
- ▶ ADB conducted loan fact-finding in February and April 2015
- ▶ Myanmar Parliament approved MUSIP in August 2015
- ▶ ADB Board of Directors approved MUSIP in November 2015
- ▶ Government of Myanmar and ADB signed loan agreement, grant agreement, and project agreement in September 2016
- ▶ ECD, MONREC approved EIA in December 2016
- ▶ Loan and grant to implement MUSIP became effective in April 2017

Project Impact, Outcome, and Outputs

- ▶ Impact: Improved urban environment and public health in Mandalay
- ▶ Outcome: Improved access to sustainable urban services in Mandalay
- ▶ Outputs: (i) Improved water supply systems
(ii) Improved wastewater and drainage management
(iii) strengthened urban services management capacity

Water Supply System Improvement

- ▶ Households with access to 24/7 water supply increased from 19,000 to 124,000
- ▶ Nonrevenue water reduced from 52% to 25%
through
- ▶ Increase in water production capacity by rehabilitating the existing water treatment plant and reservoir
- ▶ Construction of transmission lines, and rehabilitation and extension of water distribution networks
- ▶ Replacement of connections including meters

Wastewater and Drainage Management

- ▶ Direct discharge of wastewater to receiving waters reduced from 85,000m³ to 25,000m³ per day
- ▶ Households living in wards affected by seasonal flooding reduced from 92,000 to 18,000

through

- ▶ Construction of interceptor and sewerage networks, and pumping stations
- ▶ Construction of a new wastewater treatment plant
- ▶ Purchase of septage collection vehicles
- ▶ Dredging and rehabilitation of canals and installation of stormwater pumps

Capacity Development and Awareness Raising

- ▶ Project implementation support in terms of detailed engineering designs, procurement, construction supervision, disbursement, financial management, safeguards, and operation and maintenance
- ▶ Capacity development in municipal financing, nonrevenue water reduction, cost recovery of water and wastewater operations
- ▶ Climate resilient urban planning and management
- ▶ Pilot community-based solid waste management
- ▶ Awareness programs on public health and environmental protection

Cost Estimates and Financing Plan

▶ Total project cost: \$129.9 million

▶ Financing plan:

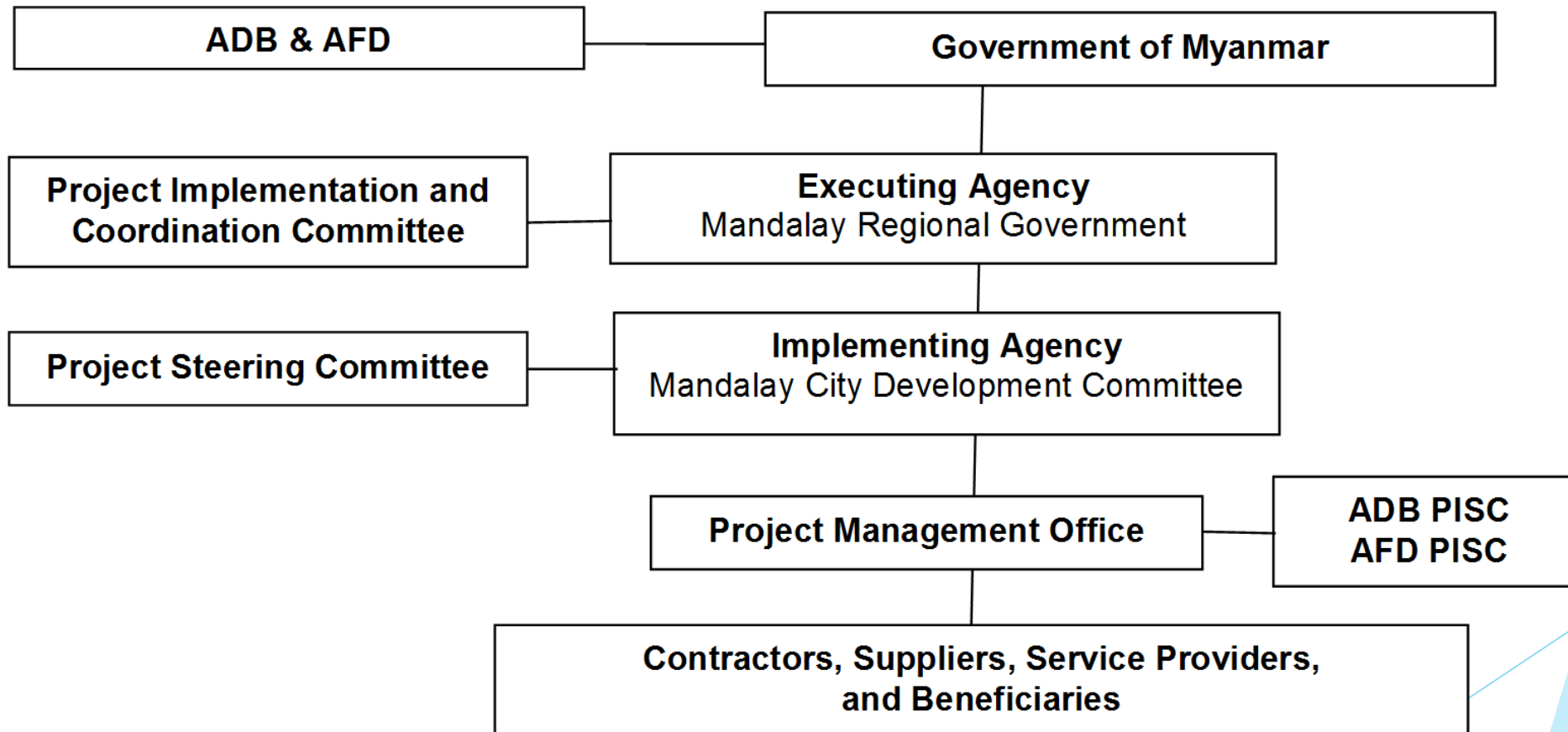
ADB loan	\$60.0 million	for wastewater and drainage
----------	----------------	-----------------------------

AFD loan	€40.0 million	for water supply
----------	---------------	------------------

UCCRTF grant (administered by ADB)	\$4.0 million	for capacity development
---------------------------------------	---------------	--------------------------

EU grant (administered by AFD)	€8.0 million	for capacity development
-----------------------------------	--------------	--------------------------

Implementation Arrangements



Poverty and Social Analysis Documents

Social Development Specialist prepared:

- ▶ Initial Poverty and Social Analysis (IPSA): Appendix to the Project Concept Paper
- ▶ TOR for TRTA consultant on poverty and social analysis
- ▶ Summary Poverty Reduction and Social Strategy (SPRSS): Linked Document to the RRP
- ▶ Gender Equity and Social Inclusion Action Plan (GESIAP): Linked Document to the RRP and included in the PAM
- ▶ Consultation and Participation Plan (CPP): included in the PAM

Poverty and Social Analysis Documents

Social Development Specialist provided inputs to:

- ▶ Design and Monitoring Framework (DMF)
- ▶ Terms of reference for the project implementation support consultant (monitoring and reporting)
- ▶ Terms of reference for the Pilot Community-based Solid Waste Management financed by UCCRTF grant
- ▶ Covenants in the Loan Agreement
- ▶ Economic analysis (designing the willingness to pay survey)
- ▶ Social safeguard documents
- ▶ Cost estimates (GESIAP and CPC implementation and monitoring)

Role of Social Development Specialist

Project Processing Stage

- ▶ Access of poor and vulnerable households (location and design of facilities, tariff structure)
- ▶ Employment opportunities during project implementation and after project completion

Project Implementation Stage

- ▶ Monitor implementation of GESIAP and CPP
- ▶ Monitor social aspects integrated in tariff roadmap

Role of Social Development Specialist

- ▶ Understand the entire project design including background, impact and outcome, outputs, cost estimates, and implementation arrangements
- ▶ Be realistic in setting up the poverty and social indicators and targets
- ▶ Integrate poverty and social monitoring and reporting requirements in the overall monitoring and reporting
- ▶ Make suggestions on project designs as appropriate