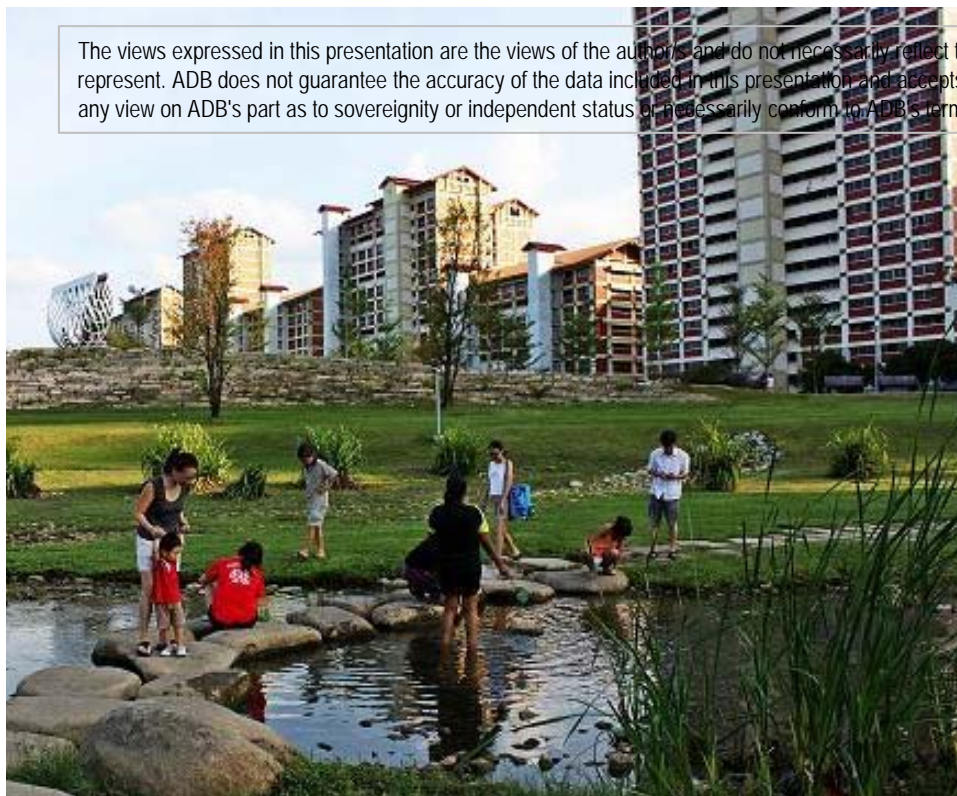


The views expressed in this presentation are the views of the authors and do not necessarily reflect the views or policies of the Asian Development Bank, or its Board of Governors, or the governments they represent. ADB does not guarantee the accuracy of the data included in this presentation and accepts no responsibility for any consequence of their use. The countries listed in this presentation do not imply any view on ADB's part as to sovereignty or independent status or necessarily conform to ADB's terminology.



# Urban System Studies: Green Cities and Sustainability

Michael Koh

Fellow, Centre For Liveable Cities





# Urban Issues in the 21<sup>st</sup> Century

- By 2050, population growth and urbanisation is projected to add 2.5 billion people to cities, 90% of which are concentrated in Asia and Africa.
- Climate change and an increasingly connected world is posing new and unprecedented challenges.



- Most of our current urban models cannot sustain these increases.
- Similarly, current brick-and-mortar method of building cities are fast encroaching upon our natural spaces.
- Moving forward, we need a new commitment towards a shared vision.





# Agenda

1. Singapore's Liveability Framework
2. City in Nature
3. Going Car Lite
4. Building Resilience

# *Genesis of CLC*

CLC was set up in 2008 by the Ministry of National Development (MND) and the Ministry of the Environment and Water Resources (MEWR) as one of the key strategies in the Sustainable Singapore Blueprint.

CLC's purpose is to distil and deepen knowledge on Singapore's urban development and facilitate global knowledge exchange on liveable and sustainable cities.

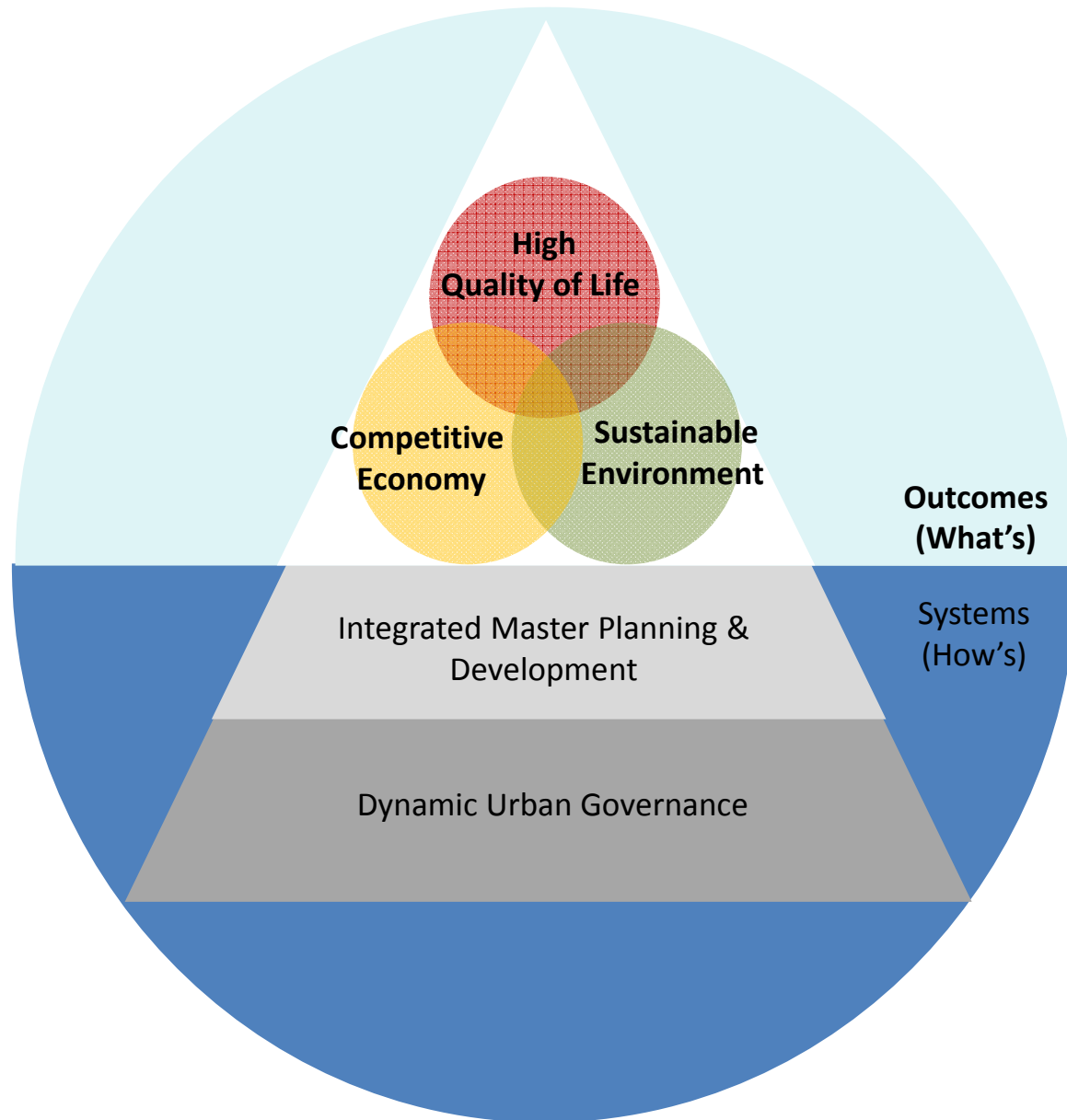
[www.sustainablesingapore.gov.sg](http://www.sustainablesingapore.gov.sg)





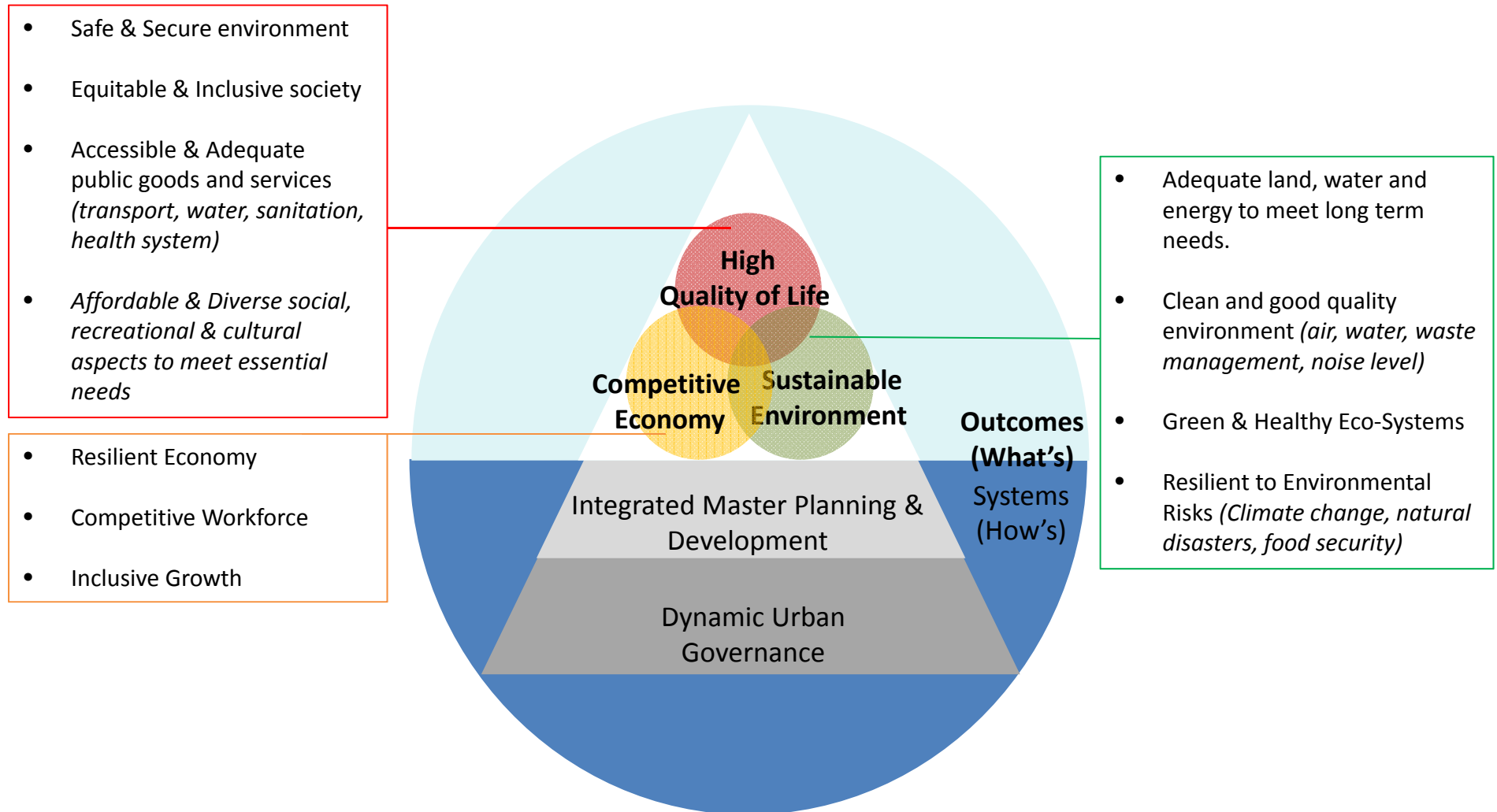
# ***Singapore Liveability Framework***

**Framework for Planning and Developing a Liveable City**



# ***Singapore Liveability Framework***

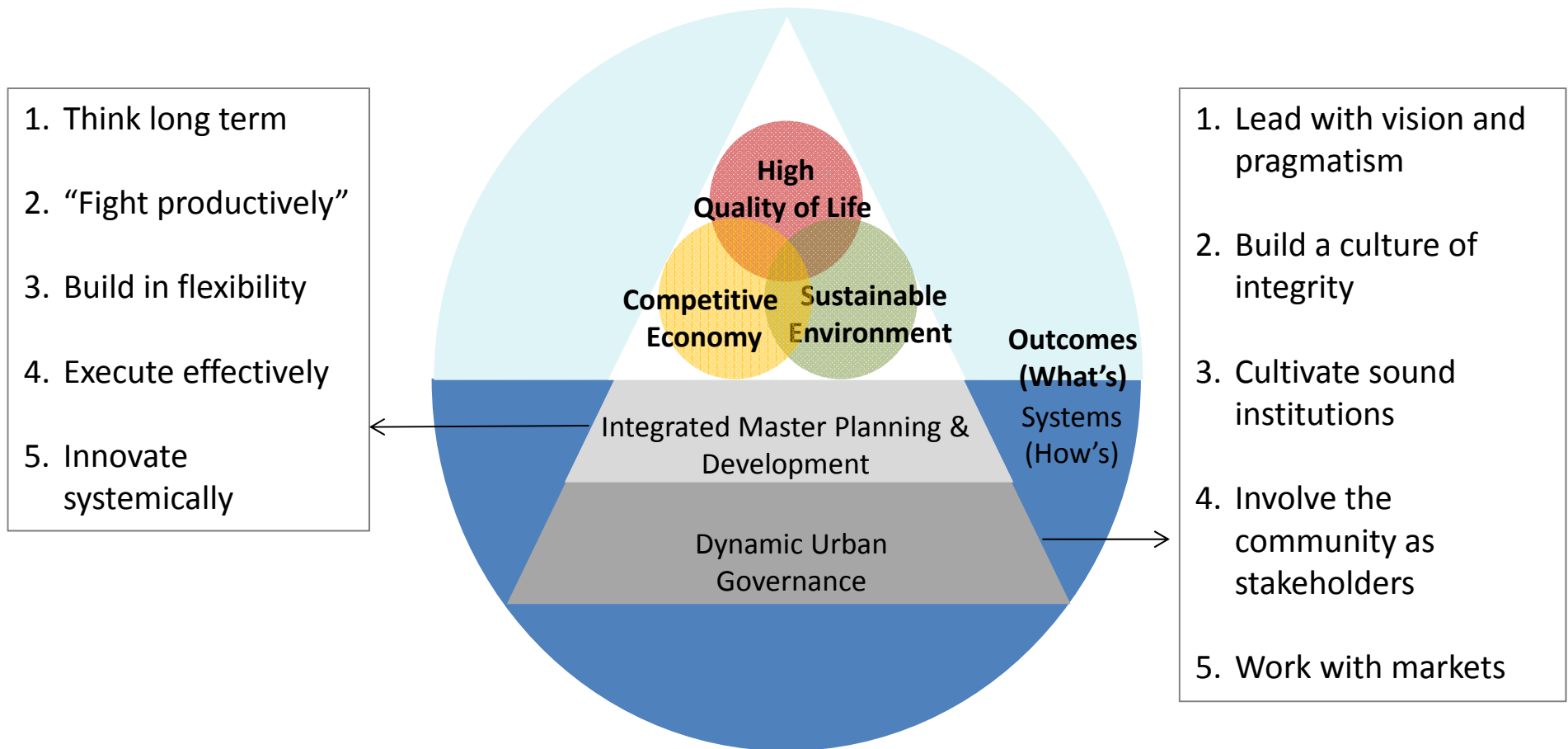
**Framework for planning and developing a liveable city**





# ***Singapore Liveability Framework***

Framework for planning and developing a liveable city



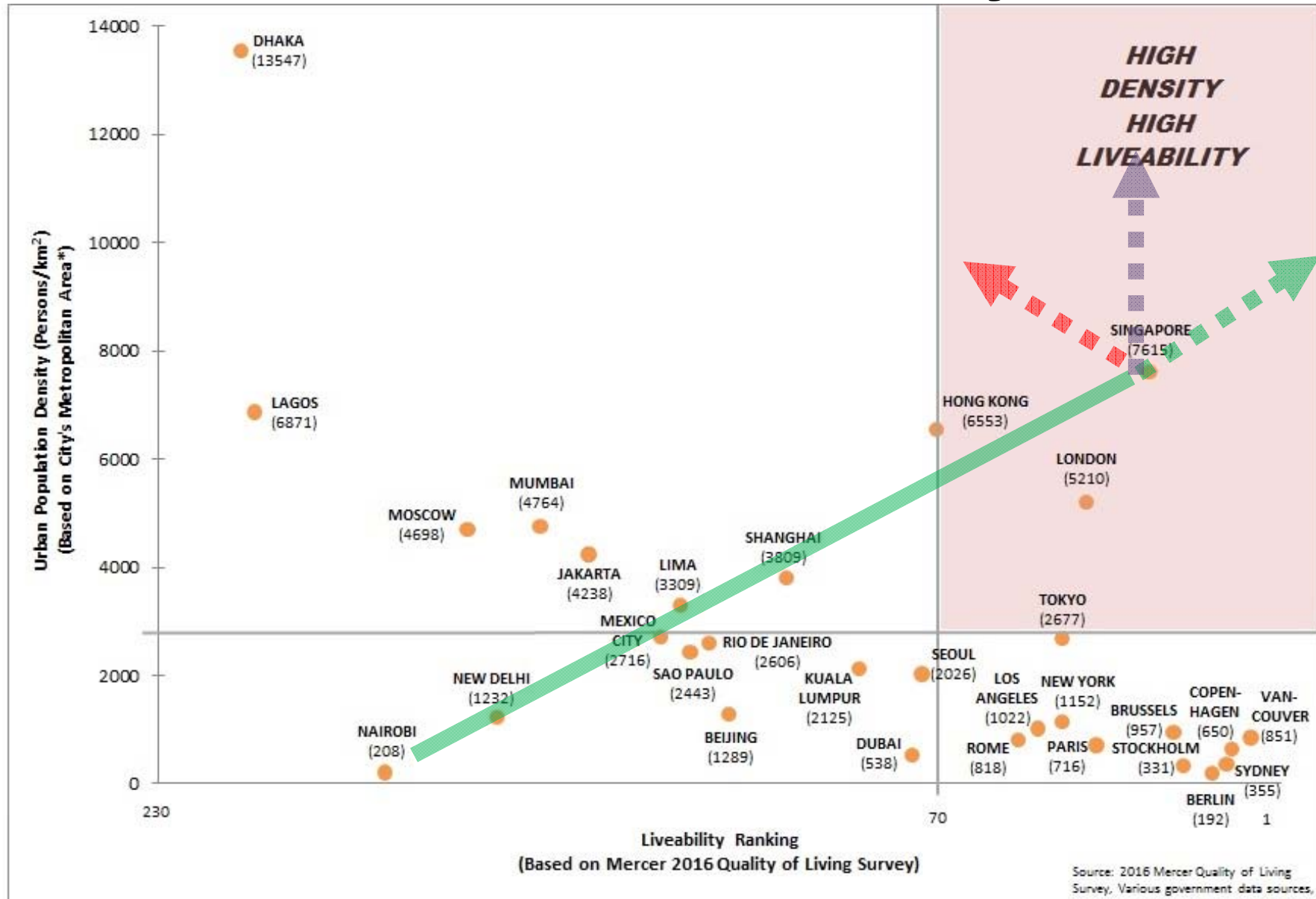
# Singapore: A highly liveable & sustainable city



Economic Competitiveness			Liveability			Health & Happiness		
SGP's ranking	2015	2016	SGP's ranking	2015	2016	SGP's ranking	2015	2016
<b>Global Power City Index (by MMF)</b>	5	5	<b>Mercer</b>	26; 1 <sup>st</sup> in Asia	26; 1 <sup>st</sup> in Asia	<b>Health-related SDG index (by Lancet)</b>	-	3
<b>Global Competitiveness Report (by WEF)</b>	2	2	<b>Monocle</b>	13	20	<b>World Happiness Report (by SDSN)</b>	24; 1 <sup>st</sup> in Asia	22; 1 <sup>st</sup> in Asia



# CLC Liveability Matrix



# ***Singapore in the 1950s & 1960s***

*A country plagued with challenges of urbanisation*

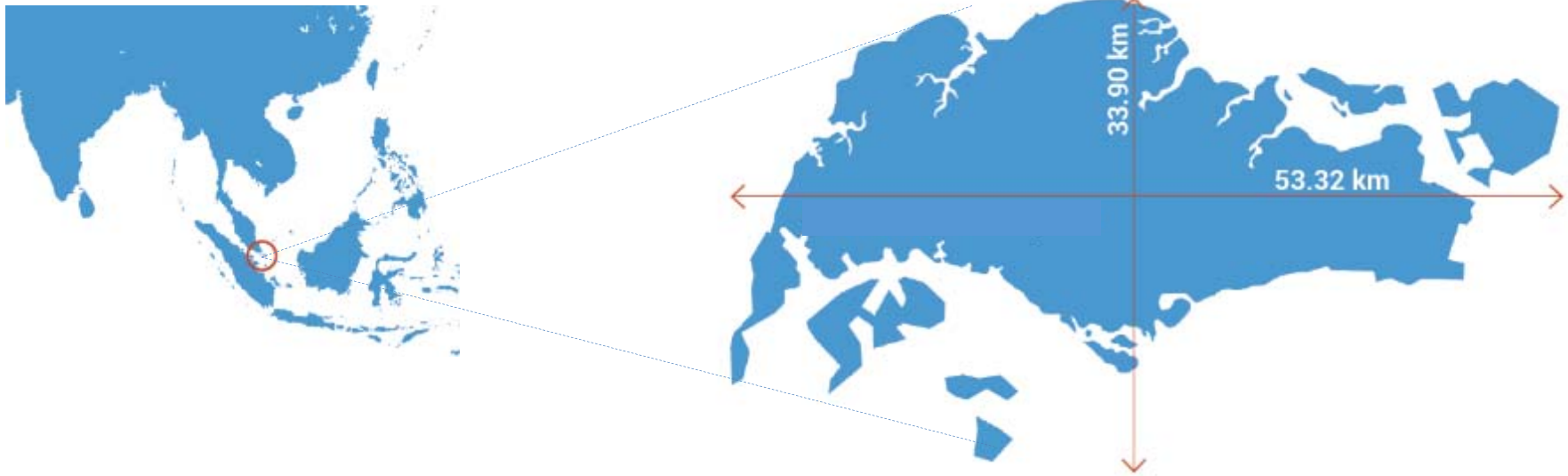




# *Singapore Today*



## *Singapore: A city-state's challenges*



- Population of **5.61 mil**
- Land area of **719 km<sup>2</sup>**
- **7,800 persons/km<sup>2</sup>** density
- Very **limited** natural resources
- **Essential** needs of a country for defence, accessibility (airport, sea port), basic survival (e.g. water supply and catchment)



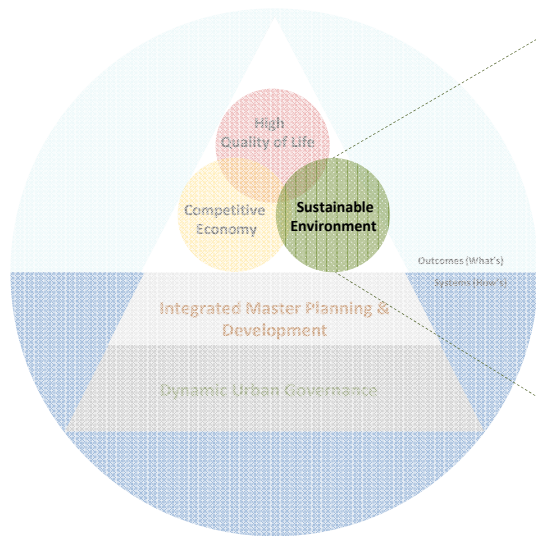
# City in Nature



Copyright © Centre



# A Clean, Green and Blue Singapore



**1. Adequate land, water and energy to meet long term needs.**

**2. Clean and good quality environment** (*air, water, waste management, noise level*)

**3. Green & Healthy Eco-Systems**

**4. Resilient to Environmental Risks** (*climate change, natural disasters, food security*)



# A Building is a Microcosm of a City

## *Biophilic Hotel, Hospital, and Industry*



Park Royal @ Pickering



Urban farming at KTPH

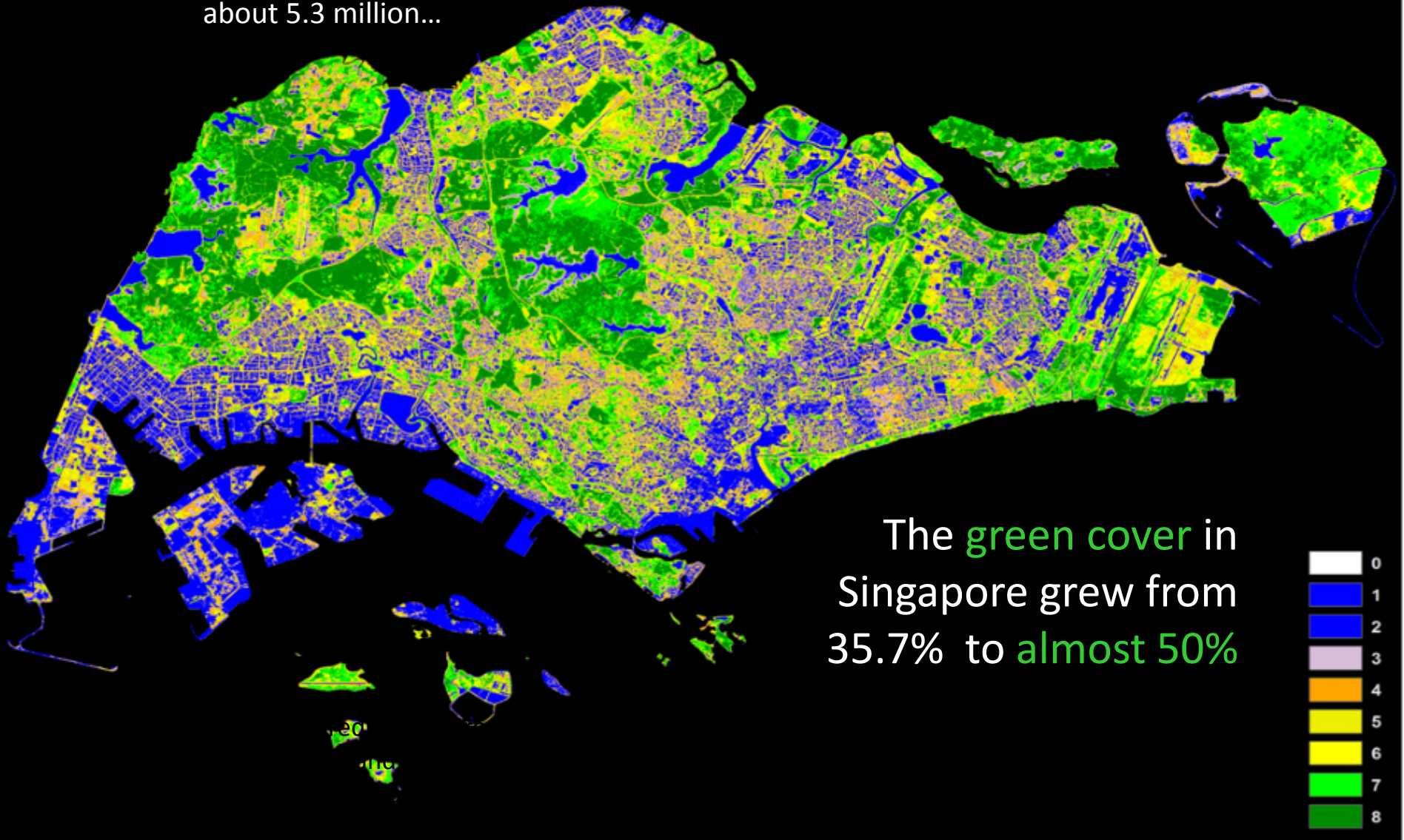


Jurong Eco-Garden at CleanTech Park



# Increasing Green Cover

Between 1986 and 2011, despite growth in population from 2.7 million to about 5.3 million...



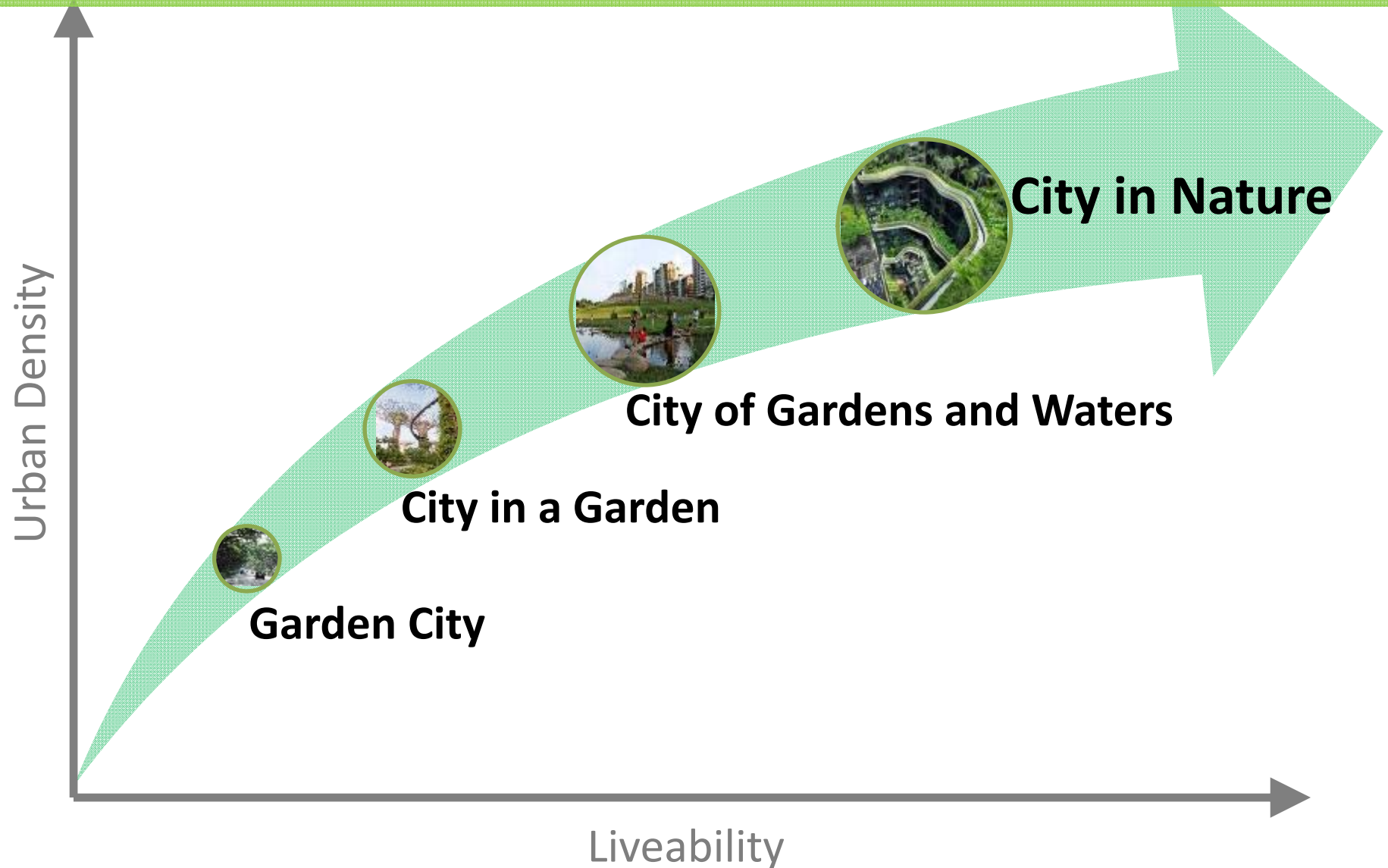
# What is a Biophilic City?



- A biophilic city puts nature at the core of its design and planning, not as an afterthought or an ornament.
- It also works hard to foster those connections and the engagement of people with nature by encouraging urban nature works, spending time outdoors, fostering interest and curiosity about nature.
- Biophilic design creates living environments that brings out the best in **both** human and ecological systems



# Singapore's Journey: Denser, Greener, Bluer

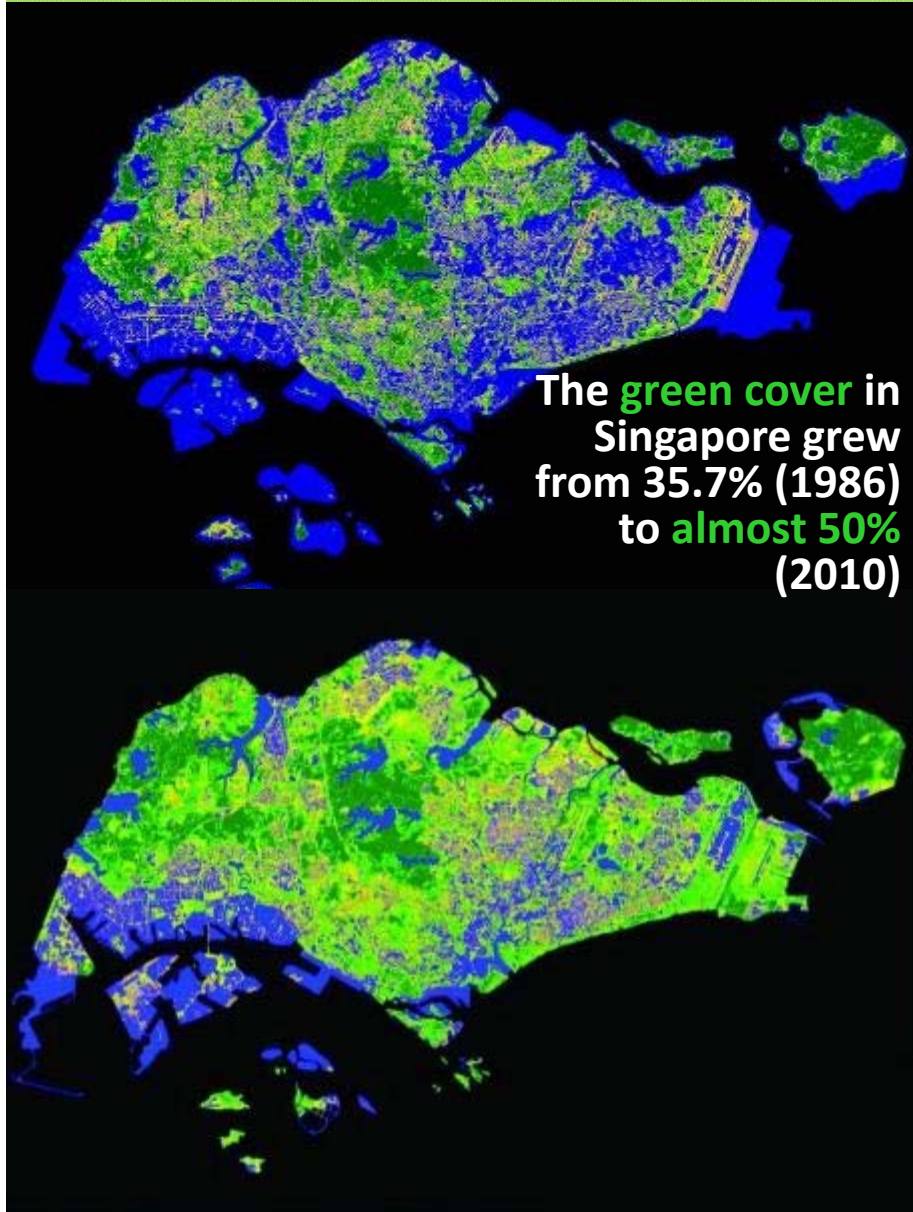




## 1960s to 2010: Garden City



# Garden City Vision



- Greening of the city amidst rapid urbanisation
- Motivations behind the vision:
  - To provide Singaporeans with the best possible living environment despite increasing urbanisation
  - To give visitors a good impression of the country and persuade potential investors of the commitment, discipline and efficiency of the government
  - To improve the morale of the citizens and allow them to take pride in their environment
- Over time, these early greening efforts resulted in an infrastructural “green skeleton”, over which subsequent biodiversity conservation initiatives could be seamlessly layered

## 2010 onwards: City in a Garden





# City in a Garden Vision



## 6 key areas

1. Establish world-class gardens
2. Rejuvenate urban parks and enliven our streetscape
3. Optimise urban spaces for greenery and recreation
4. Enrich biodiversity in our urban environment
5. Enhance competencies of our landscape and horticulture industry
6. Engage and inspire communities to co-create a greener Singapore

# Paradigm Shift for our Waterways



# The Blue Map of Singapore



**17** reservoirs

**32** rivers

**7,000** km of waterways and drains

## Water Supply Strategy



To collect  
every drop  
of water  
that falls  
on  
Singapore



To collect  
every drop  
of used  
water

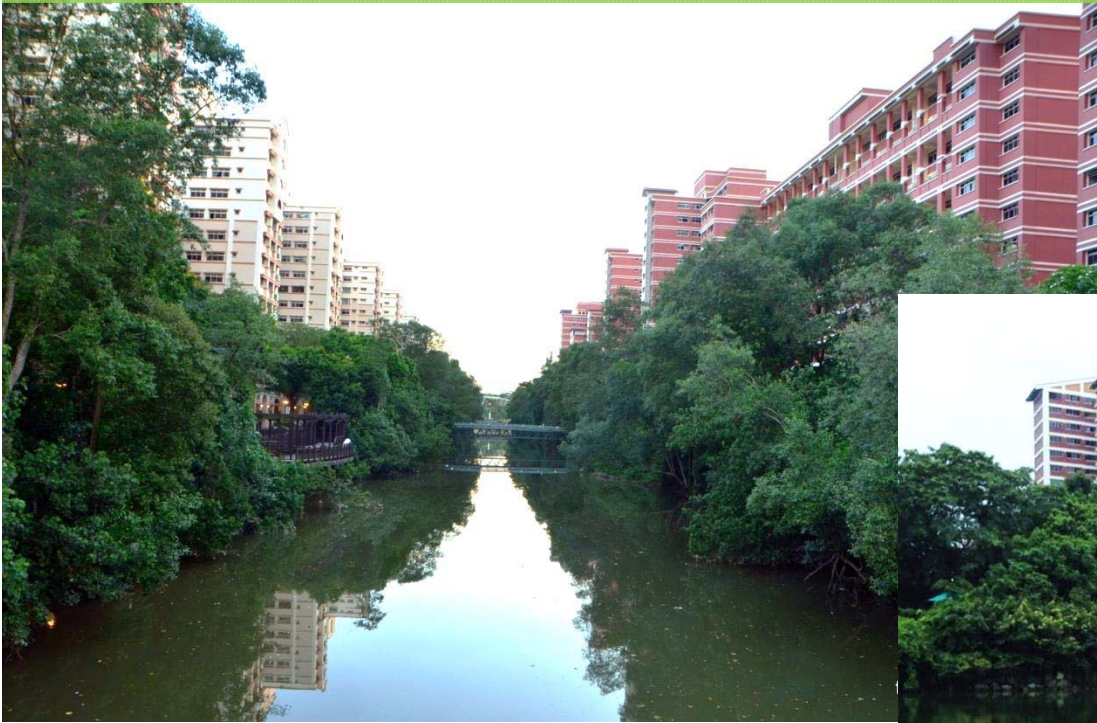


To recycle  
every drop  
of water  
more than  
once



# Parks and Water Bodies Plan

## *The Predecessor of ABC Waters Programme*



Sungei Api Api



Pang Sua Pond



# MacRitchie Reservoir





# Active, Beautiful & Clean Waters Programme

## ACTIVE

New Recreational Spaces

## BEAUTIFUL

Integration of waters with urban landscape

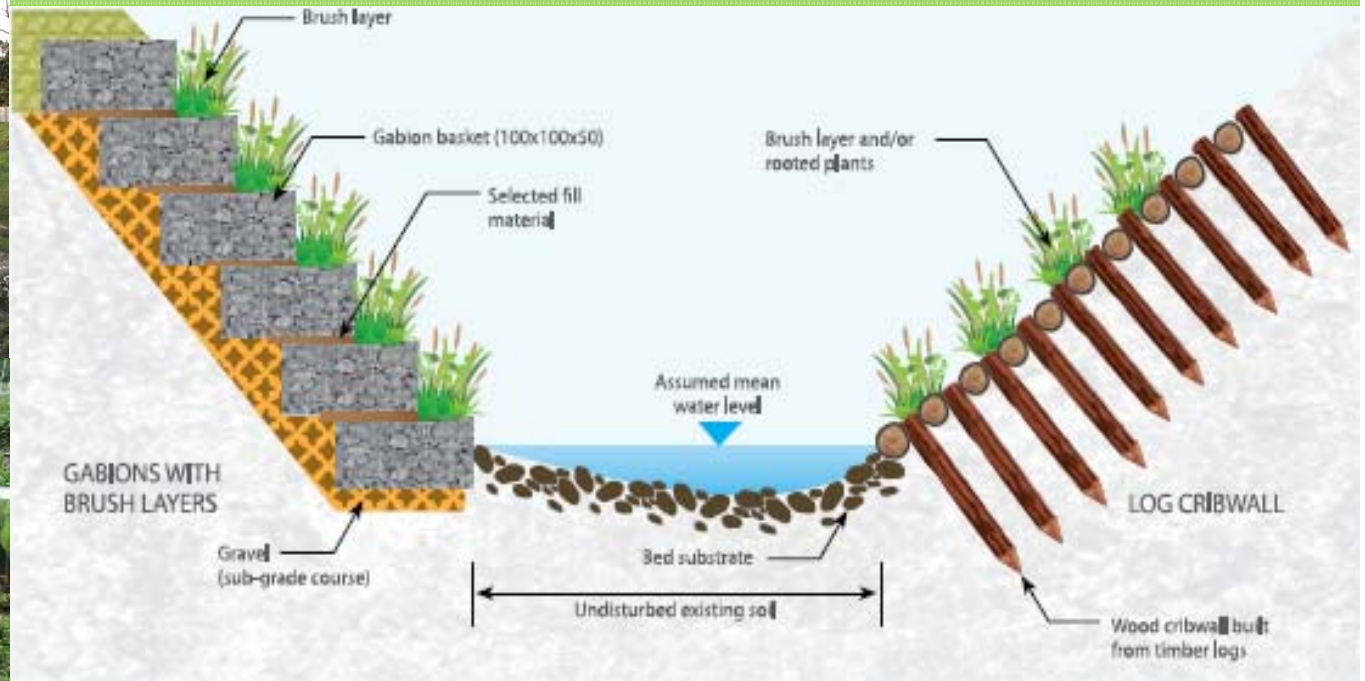
## CLEAN

Improved Water Quality

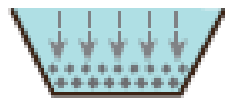


Active, Beautiful, Clean Waters: Kallang River @ Bishan-Ang Mo Kio Park

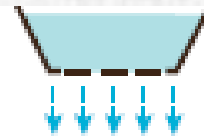
# ABC Waters Design Guidelines



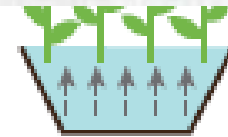
**DETENTION ELEMENT**



**SEDIMENTATION**



**FILTRATION**



**BIOLOGICAL UPTAKE**

- ABC Waters design features include: Vegetated swales, Bioretention swales or basins, Sedimentation basins, Constructed wetlands, Cleansing biotopes, Infiltration systems
- Application of water-sensitive urban design features meant for stormwater management



# ABC Waters Projects

SUNGEI API API AND SUNGEI TAMPINES –  
Opened in March 2015



SENGKANG FLOATING WETLANDS –Opened  
in 2010



ROCHOR CANAL – Opened in March 2015



KALLANG RIVER (POTONG PASIR) –  
Opened in July 2015



Source: PUB, Singapore's water agency



# Mainstreaming ABC Waters



- ABC waters as an integral part of urban planning
  - Providing urban planners and allied partners with more tools to create a city that supports nature and connects with its citizens
  - Planners, developers and project managers will balance trade-offs in solutions
    - e.g. more land required vs straight concrete channels, while maintaining drainage and liveability requirements
- ABC Waters Design Guidelines
  - To help design and operate reliable ABC Waters assets.



# ABC Waters: Marina Barrage





# ABC Waters: Marina Barrage

## **Water Supply**

Boosts Singapore's water supply as Singapore's 15<sup>th</sup> reservoir and its first reservoir in the city

## **Flood control**

Acts as a tidal barrier to keep seawater out and alleviates flooding in the low-lying city areas

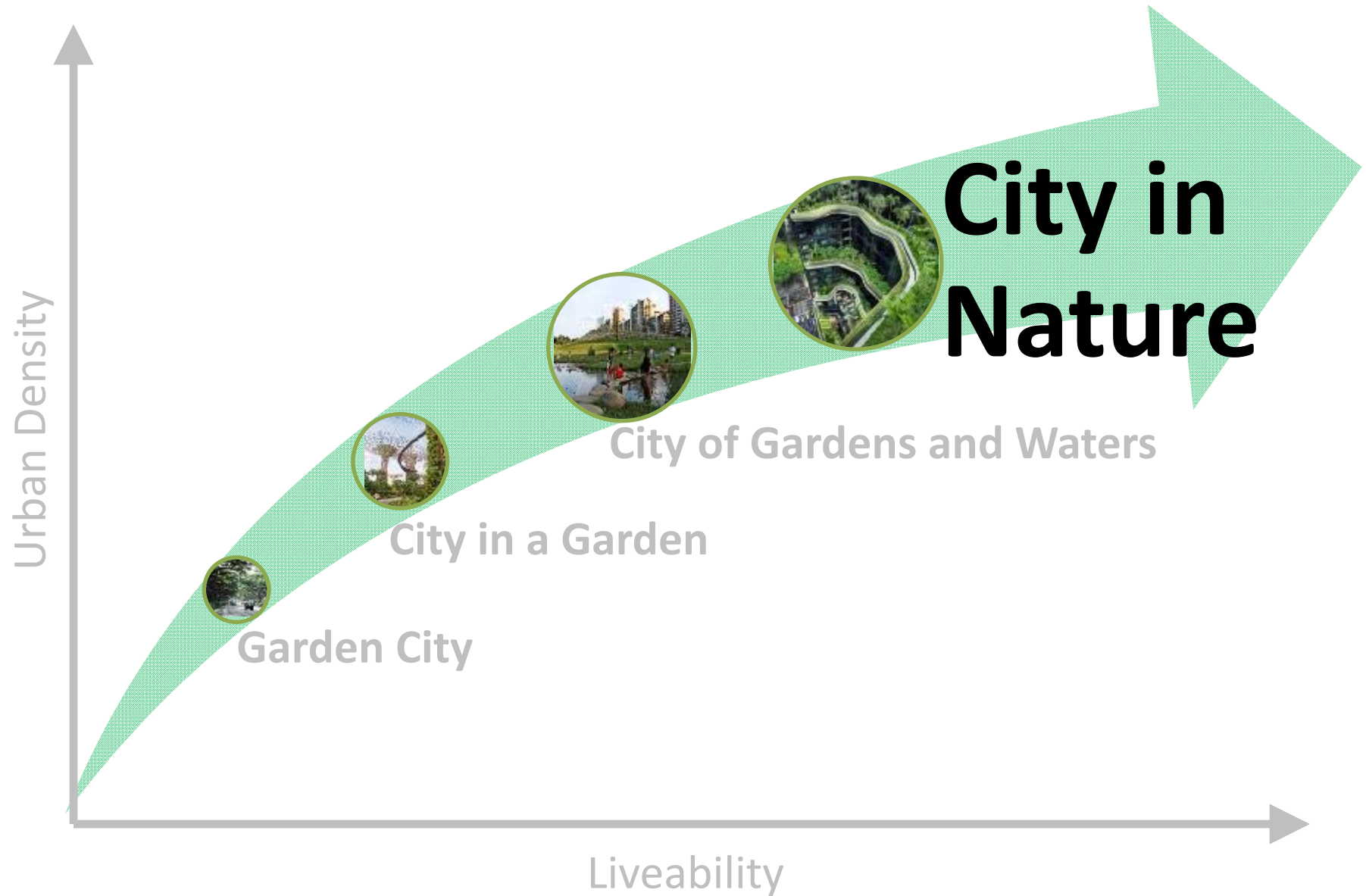
## **Lifestyle Attraction**

Hotspot for recreational activities and latest icon in Singapore





# Future Directions



# Biophilic HDB Town: Punggol 21+





# Biophilic HDB Town: Punggol 21+





# Car-lite supporting City in Nature in Punggol Town



1 SUNSET STRIP



2 TOWN CENTRE (U/C)



3 HEARTWAVE WALL



4 PUNGGOL WATERWAY PARK



5 WATERSPORTS PROMENADE

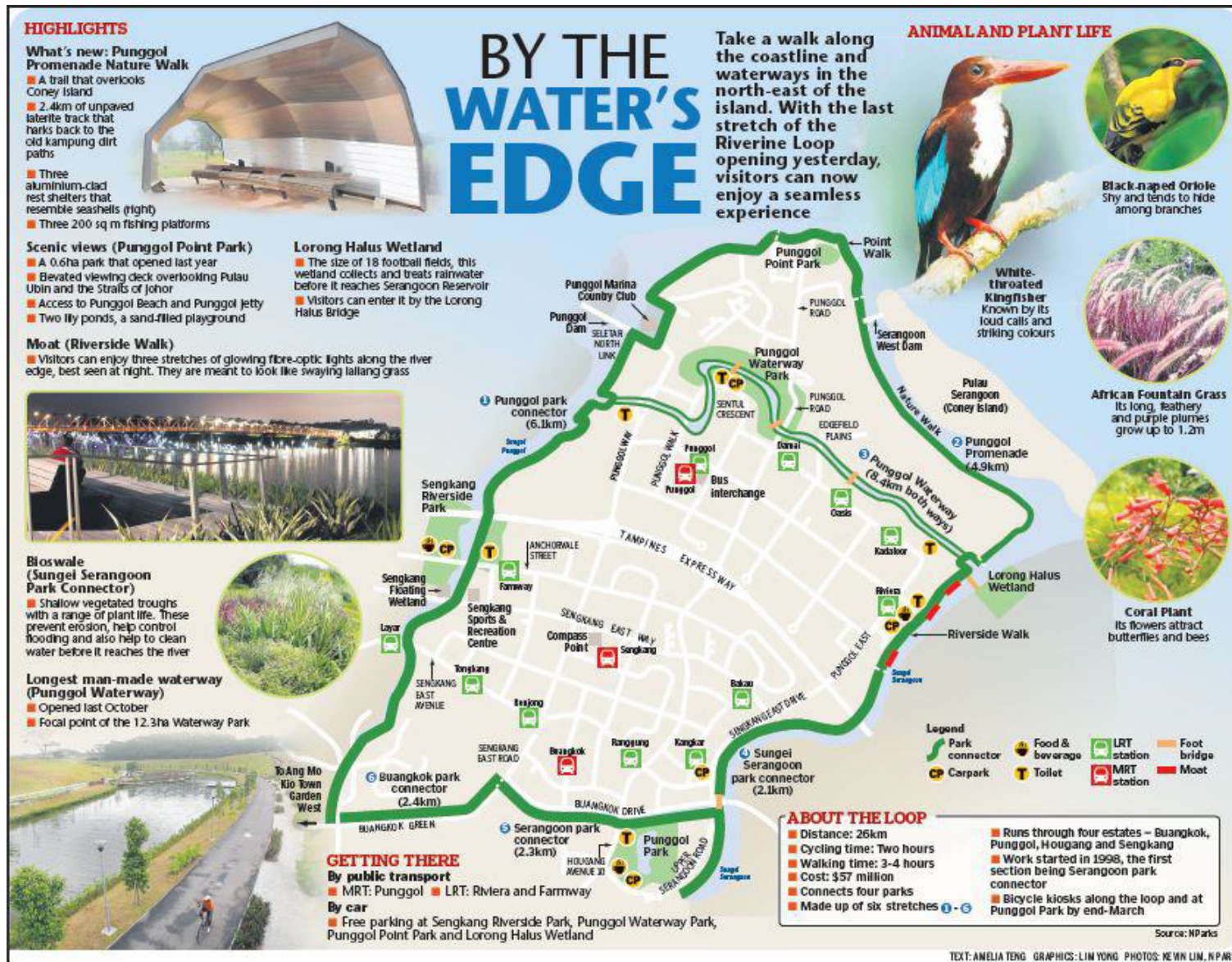


6 SUNRISE GATEWAY

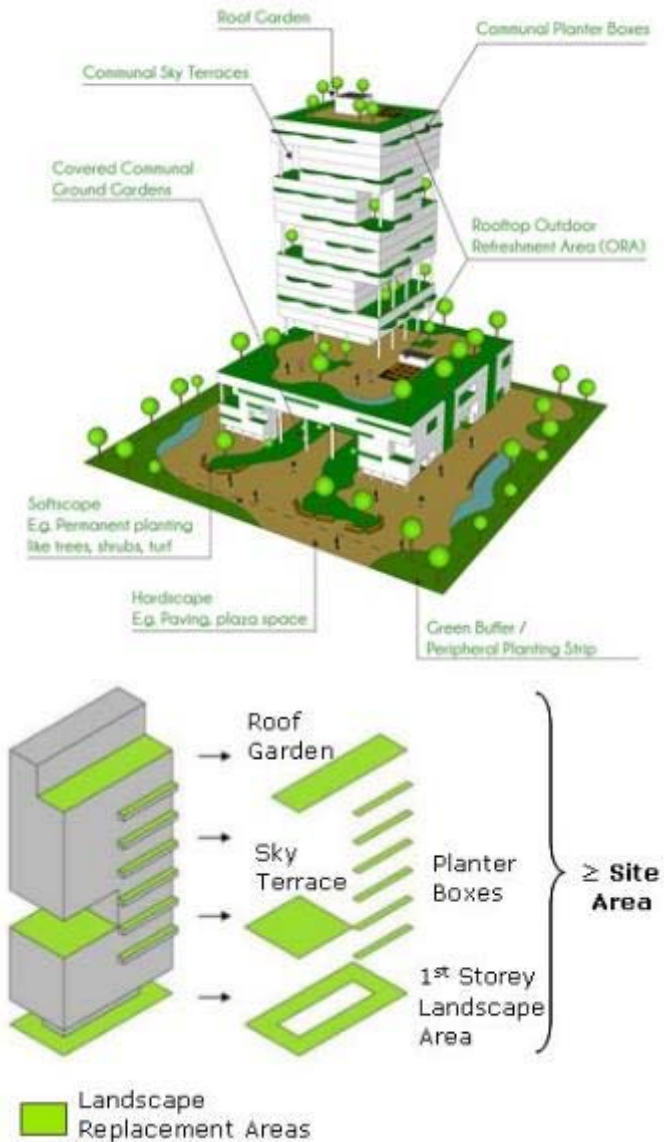




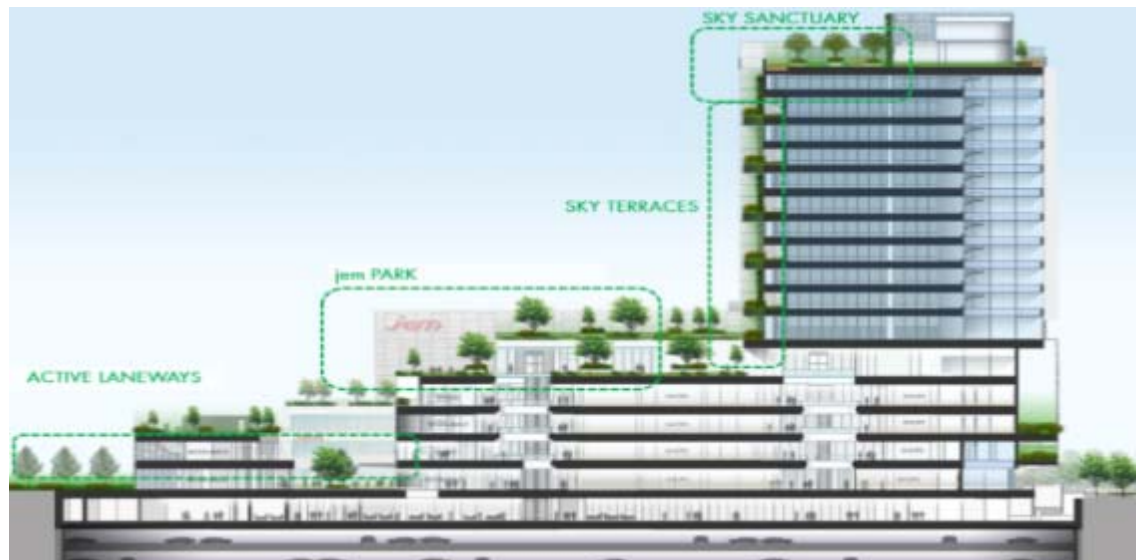
# Biodiversity at Punggol Town



# Landscape Replacement Policy



- Developers must replace greenery displaced by buildings and lost from the site.
- Applicable to non-landed private residential and commercial/mixed-use/hotel developments outside strategic areas.
- New and redevelopments must provide communal green spaces.
- More intensive developments are required to provide more communal green spaces.





# Vertical Forest: Bosco Verticale, Milan

- The 27 storey structure is also the world's first vertical forest
- Diversity of plants produce humidity, absorb CO<sub>2</sub> and dust particles, create oxygen and protect the building from radiation and acoustic pollution.
- Plant irrigation supported through the filtering and reuse of grey water produced by the building.





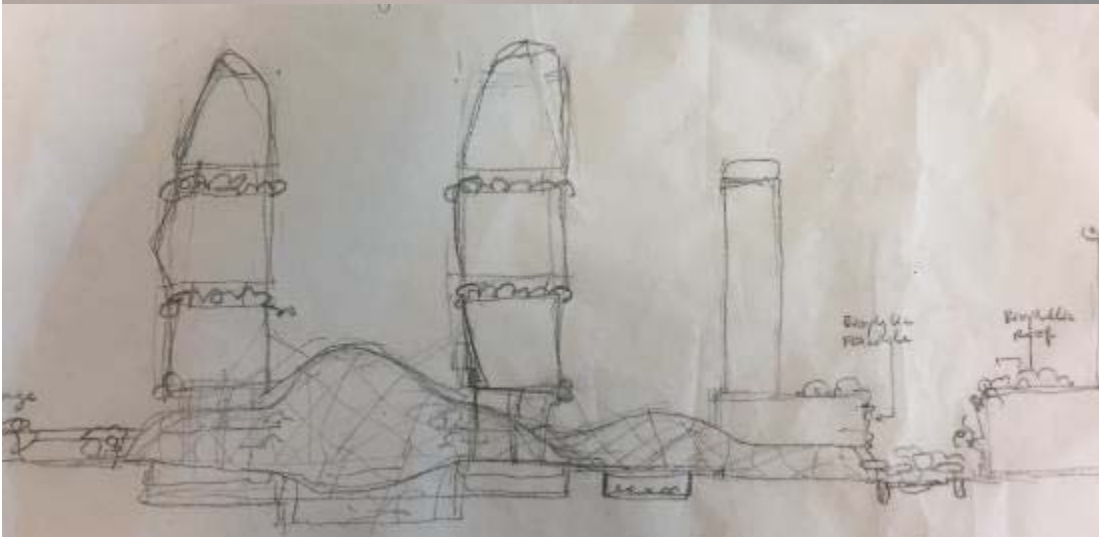
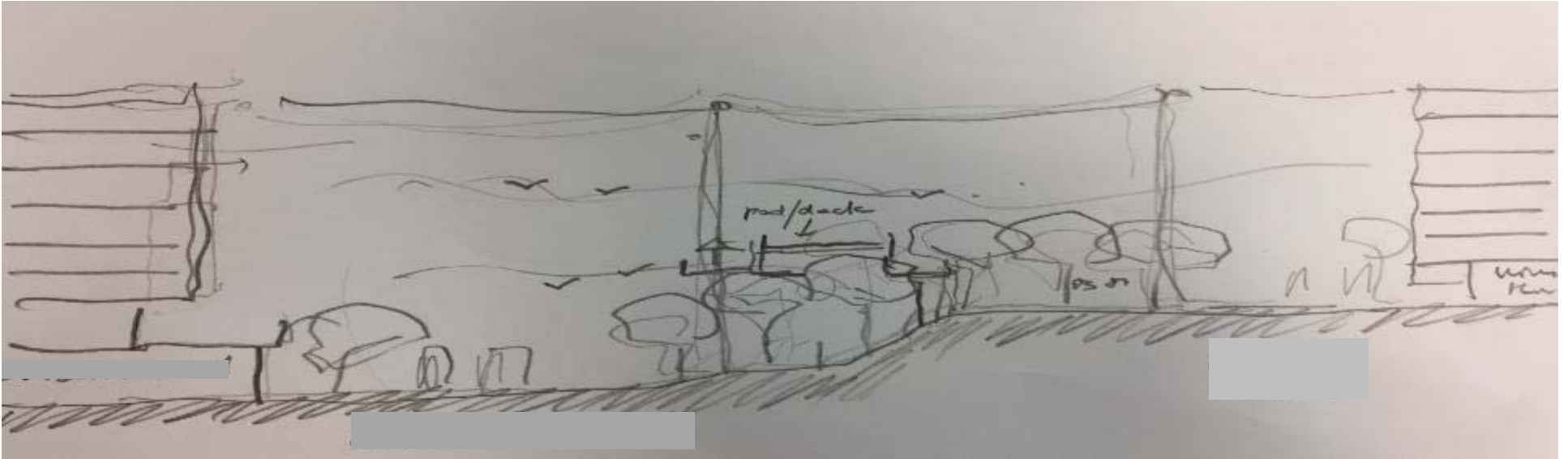
# Hillside Forest: Fukuoka Prefectural Hall





# Thought Experiment: Community Borne from Nature

## Re-imagine urban living



- Can communities organically emerge from being close to nature?
- How do we build cities to co-exist with nature?
- What are the biophilic possibilities for cities?

# Thought Experiment: Sponge Cities



- Build with precipitation rather than against it.
- For instance: absorb precipitation through permeable pavements, rain gardens and wetlands. Reuse water for irrigation, parks or drinking to assist with flood prevention

How does a sponge city work ?

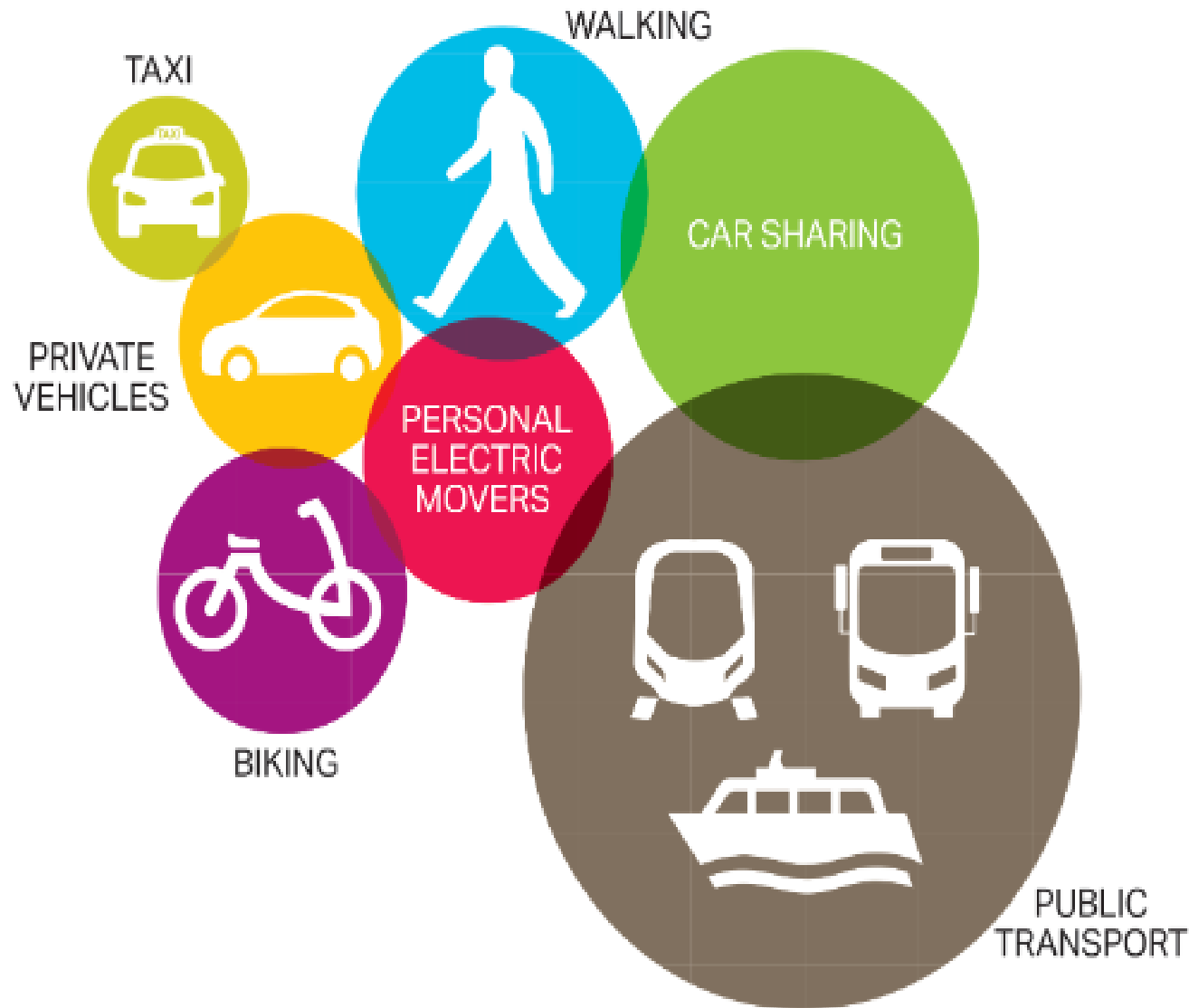


# Sponge Technology: Yanweizhou Park



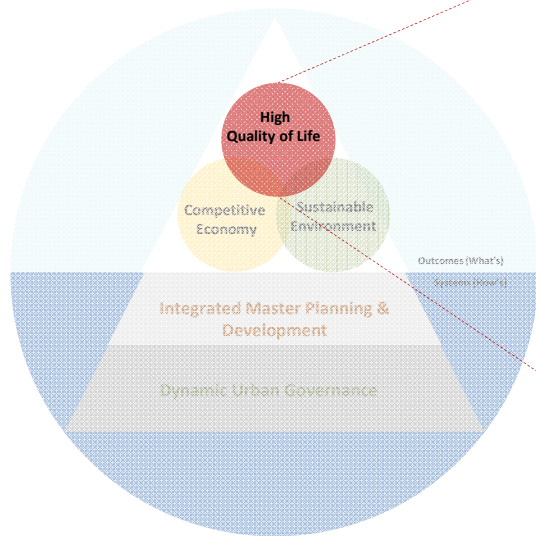
- Yanweizhou park is designed to work alongside annual flooding rather than control it with concrete floodwalls.
- The cut-and-fill strategy of create a water-resilient terraced river embankment that is covered with flood adapted native vegetation. Greenery thrived through this new design.
- Floodable pedestrian paths and pavilions are closed to the public during the short period of flooding. However, the bridge still remains accessible to the public. In non-flood periods, the park is a place for community to flourish.
- Won the world landscape of the year for 2015.

# Go Car-lite





# High Quality of Life



1. **Safe & Secure environment**
2. **Equitable & Inclusive society**
3. **Accessible & Adequate public goods and services** (*transport, water, sanitation, health system*)
4. **Affordable & Diverse social, recreational & cultural aspects to meet essential needs**

# A Vision for a Car-lite, Actively Mobile Singapore



## Why go Car-Lite?

- **Environment:** Car-centric cities are not environmentally sustainable
- **Public Health:** Car-centric cities promote a sedentary lifestyle
- **Social:** Car-lite cities are also human-oriented, offering new opportunities

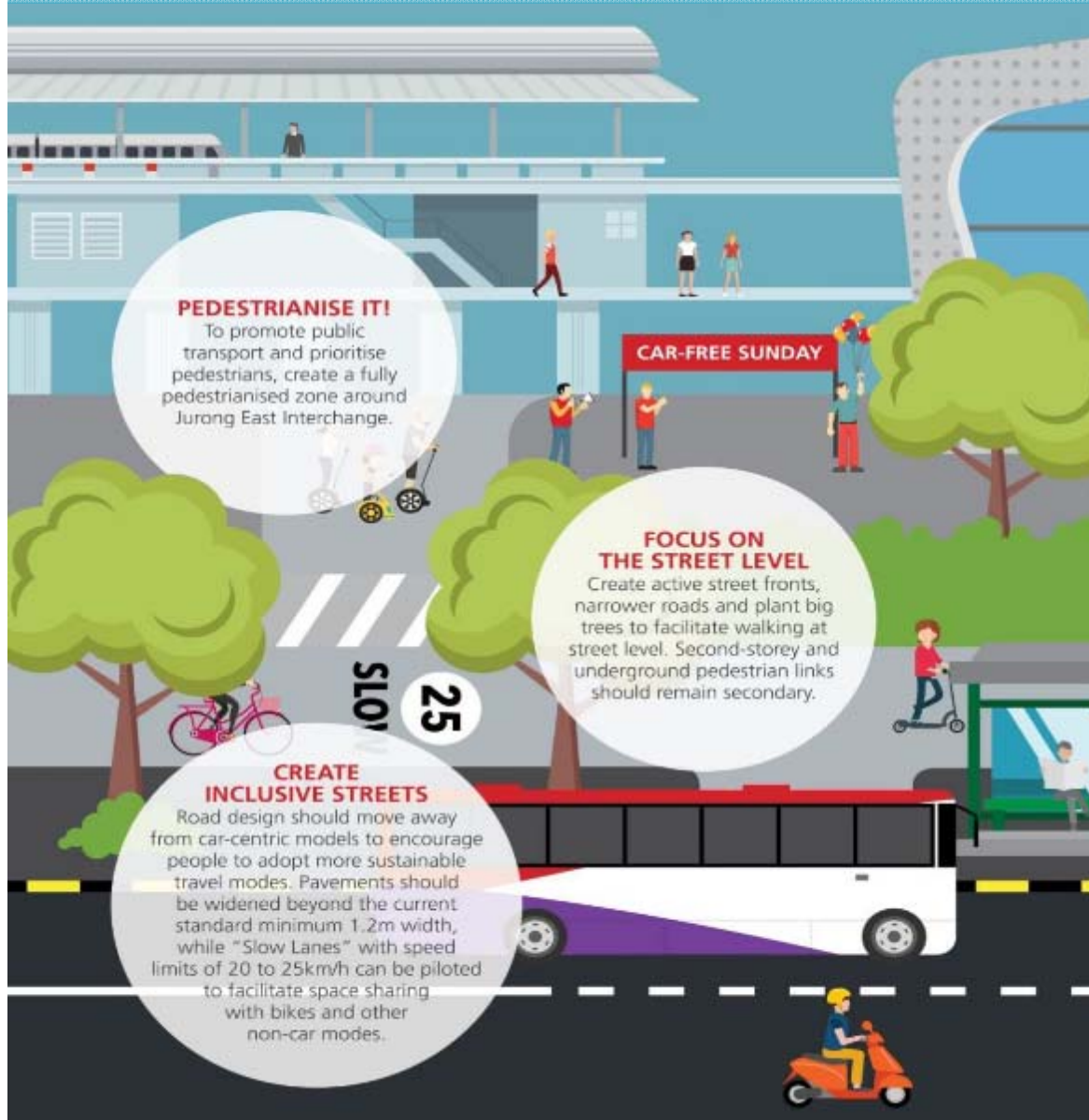
*“Early this year, I outlined our **car-lite vision**, built on **three pillars**.*

***First, reliable public transport** with our train system as the backbone. **Second**, hassle-free, comfortable and convenient **first-and-last-mile connectivity** to the nearest train station or bus interchange. And **third**, a strong point-to-point, **shared transport system** made up of taxis, private hire cars and car-sharing.”*

**Mr. Khaw Boon Wan,**  
**Coordinating Minister for Infrastructure and Minister for Transport,**  
**at the Walk Cycle Ride Singapore Symposium, 20 Jul 2016**



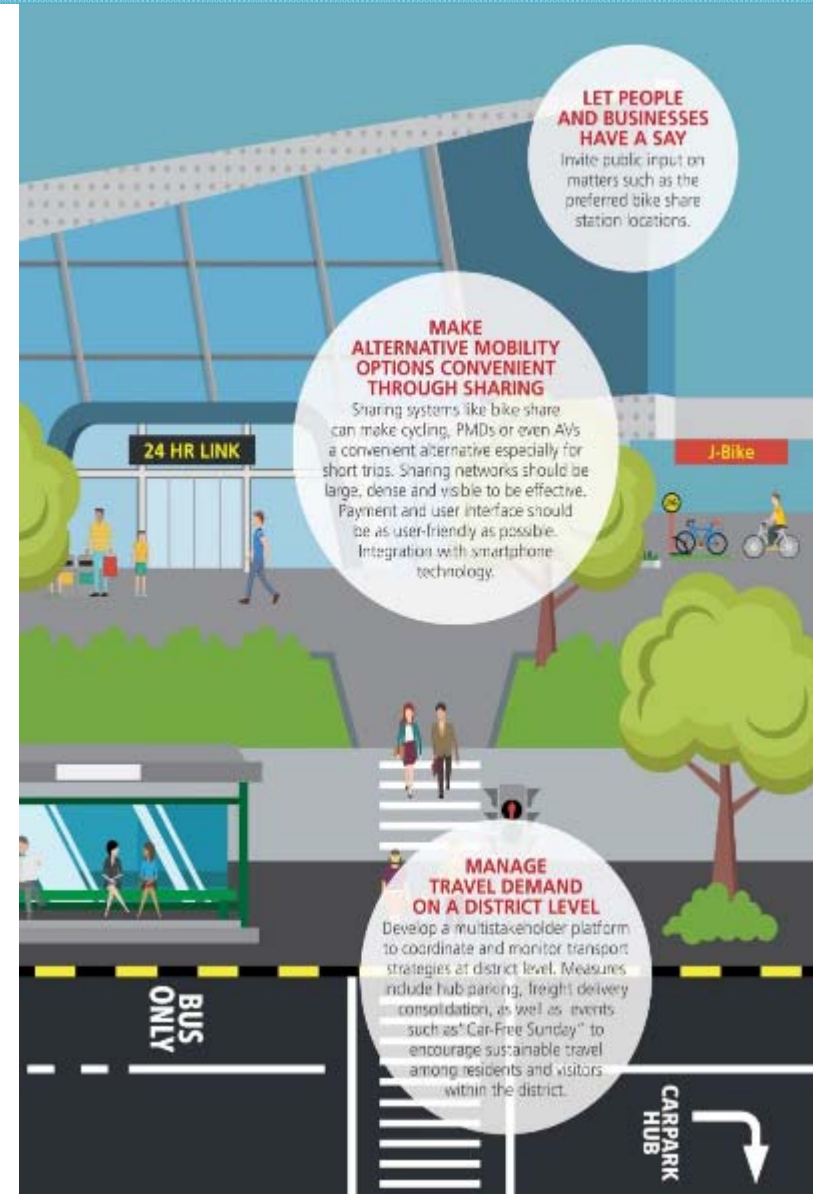
# Human-oriented Developments



- Active street fronts
- More greenery and shade
- Shared mobility (e.g. shared bikes, shared PMDs, driverless pod cars) key first/mile mobility modes in largely pedestrianized areas
- Ensure good connectivity and prioritize people's movement at street-level

# Travel Demand Management: New Opportunities

- Car-lite compatible parking provision e.g. hub parking
- Freight: Night-time delivery and retail delivery consolidation scheme
- Car-sharing lots, secure cycle parking and shower and locker facilities within individual developments
- Employers to take lead in promoting sustainable travel behaviors amongst employees and visitors e.g. campaign, incentives such as discounted/free bike-share/car-share membership
- Develop a monitoring regime to track district-wide sustainable travel targets





# 2016 and beyond: Singapore as a car-lite city



## Mobility Plans Required for Development Projects



## Improving Walkability

Expand radius of sheltered walkways from 200m to 400m from transport nodes



## Car-free Zones

13 zones declared car-free at stipulated timings



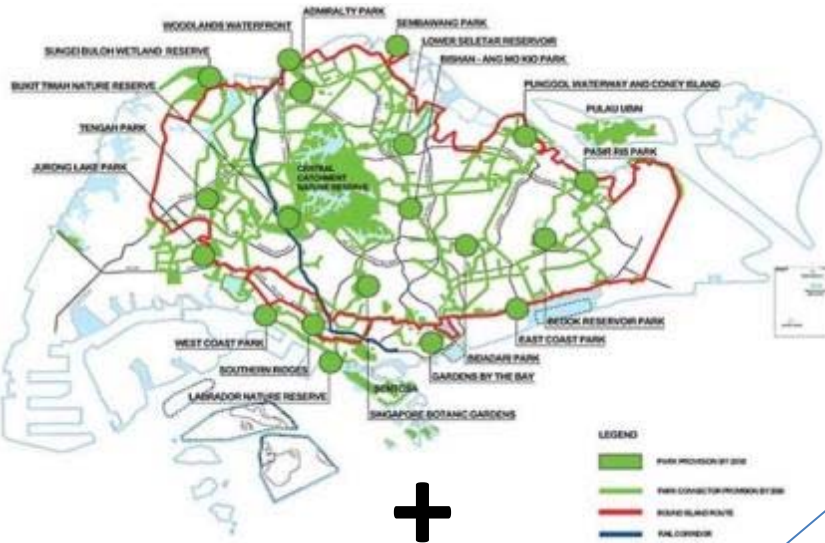
## Encouraging Cycling

Foldable bicycles (1.1m x 0.6m) allowed on MRTs



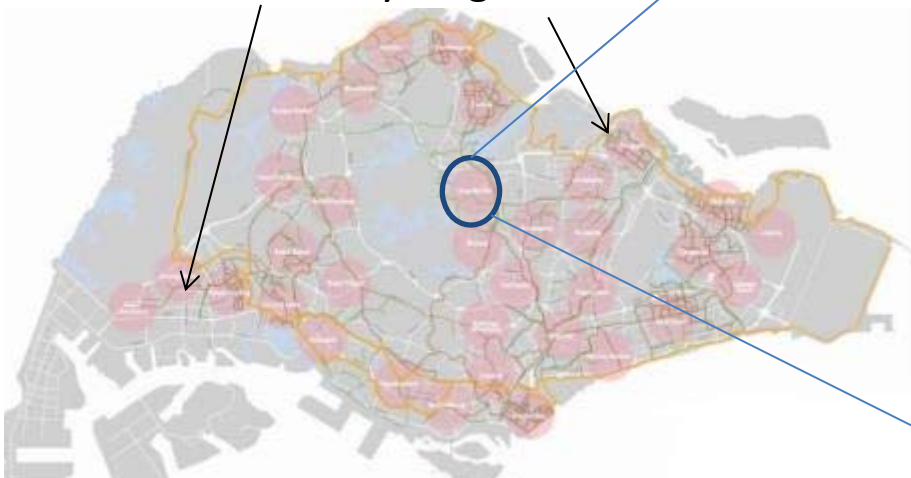
# Cycling: Improving the Infrastructure

## Park Connector Plan – 360 km by 2020



+

## National Cycling Plan – >700km by 2030, Intra town cycling networks



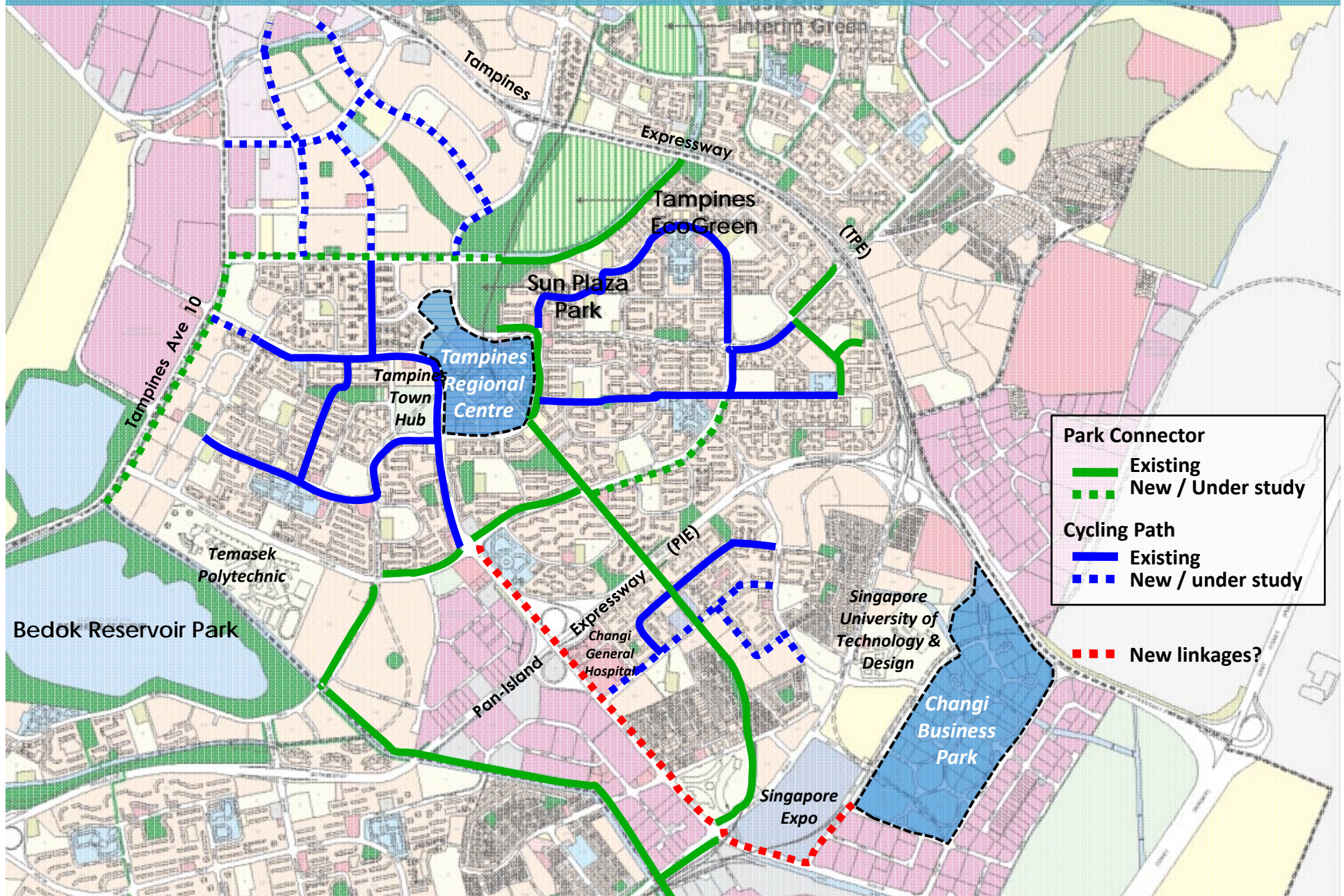
## Ang Mo Kio Cycling Town

- Singapore's first walking and cycling town
- Cycling paths connecting key amenities
- Unused space under MRT viaduct transformed into sheltered cycling paths



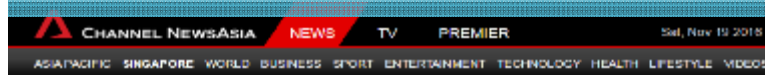


# Tampines Cycling Path & Park Connector Network





# Cycling: New Opportunities

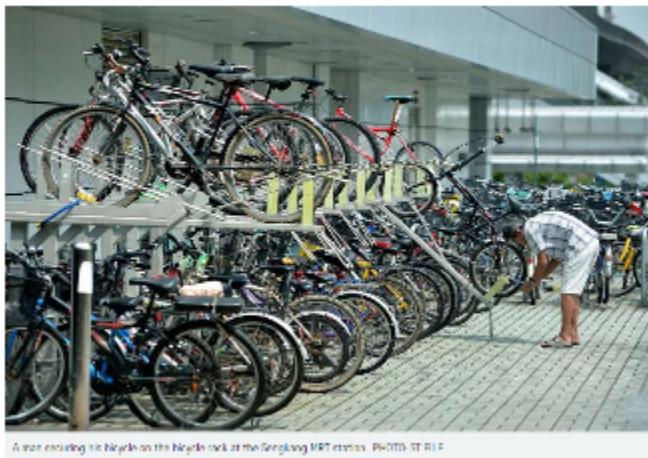


## Bicycle-sharing scheme to start in Jurong Lake District by end-2017

By Kenneth Lim | Posted 29 Jul 2016 16:27 | Updated 29 Jul 2016 03:03



## Big sponsor wanted for bike-sharing scheme



A man securing his bicycle on the bike rack at the Serangoon MRT station. PHOTO: ST REEF

**Service providers (e.g. PT and bike-share operators) collaborate to provide a suite of mobility services and facilities to complete trip eco-system**

- Integrated bike-share payment system with public transport
- Network: Build in the scope to expand beyond JLD
- Make bike-share stations visible and accessible
- Bike-share and on-street bike lanes go hand in hand – consider low budget on-street bike lane trial @ JLD to boost attractiveness and profitability of bike sharing scheme
- Invite public inputs
- Encourage private entities to take over the bike share market for greater efficiency.





# Pedestrianisation: Bringing back Bustling Streets





# Eco-mobility World Festival



- The EcoMobility World festival was initiated to show that an EcoMobile lifestyle can be promoted in cities all over the world.
- The Festival transforms a neighbourhood into a pedestrian zone for an entire month to demonstrate the possibilities of an innovative and forward-thinking urban transportation culture
- Past festivals were held in Suwon, S.Korea and Johannesburg, S.Africa



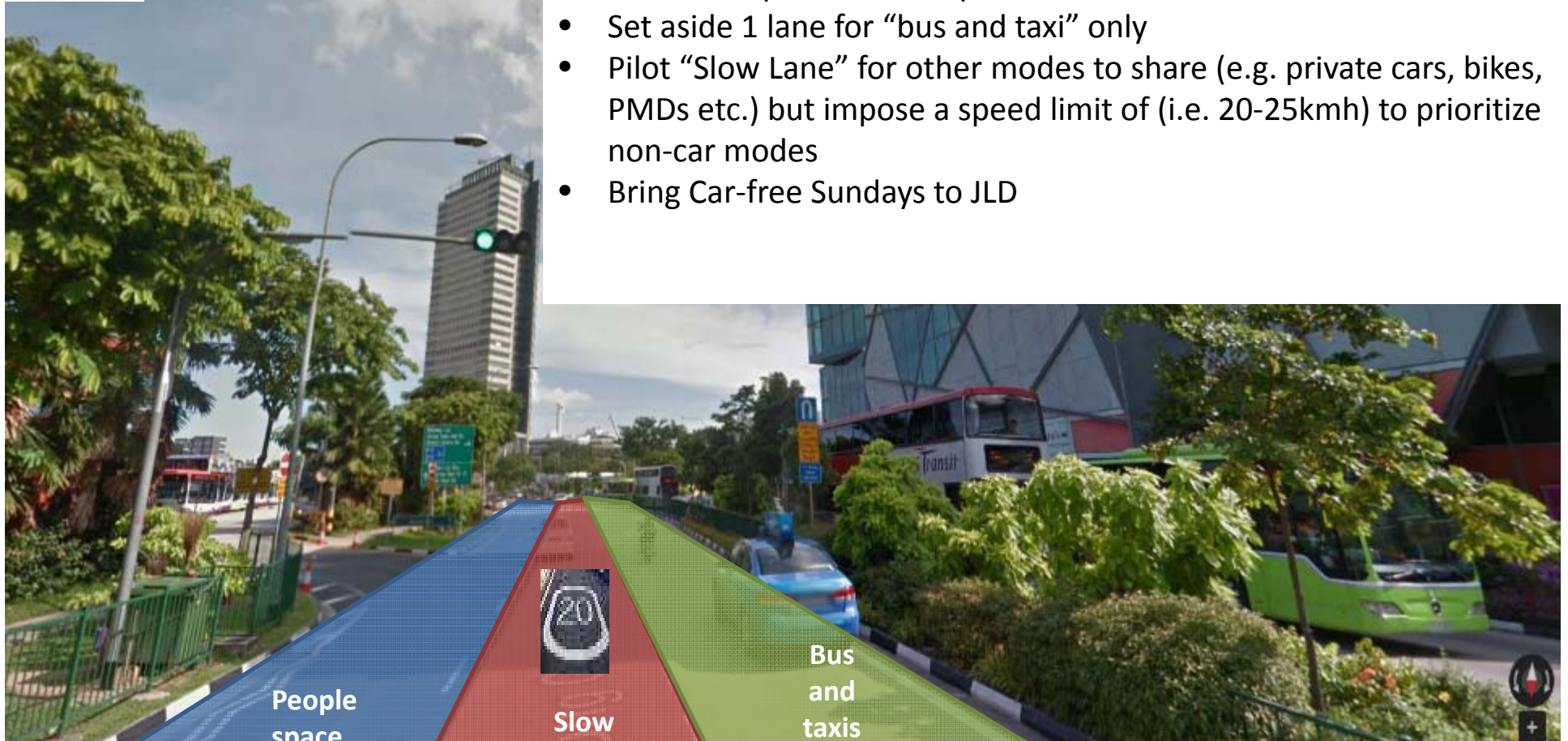


# Thought Experiment: Jurong Gateway

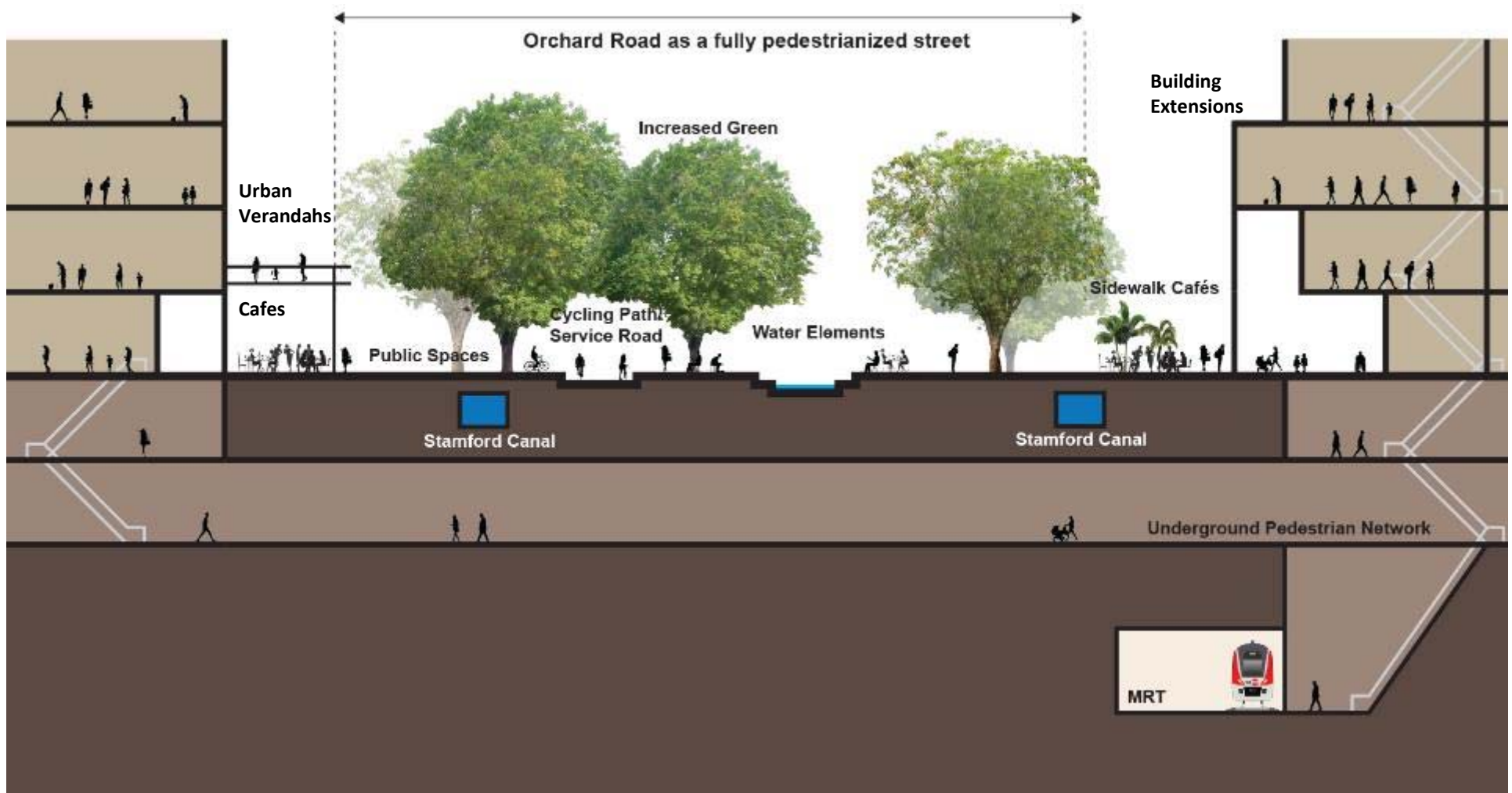


## Consider the following interventions for Jurong Gateway:

- Widen the pavement for pedestrians
- Set aside 1 lane for “bus and taxi” only
- Pilot “Slow Lane” for other modes to share (e.g. private cars, bikes, PMDs etc.) but impose a speed limit of (i.e. 20-25kmh) to prioritize non-car modes
- Bring Car-free Sundays to JLD



# Thought Experiment: Orchard Road





# Thought Experiment: Orchard Road

*Collaboration between CLC/WOHA/NUS Studio*





# Thought leaders: Oxford Street, London

Before



After





# Thought leaders: George Street, Sydney

Before



After



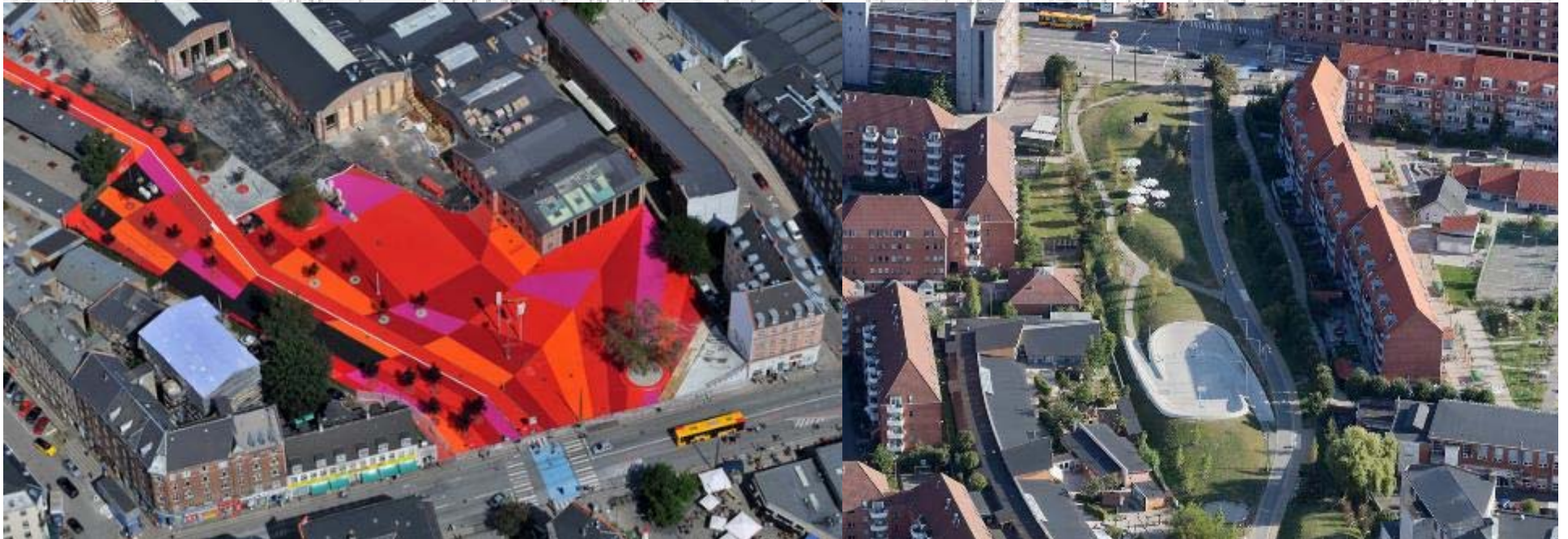
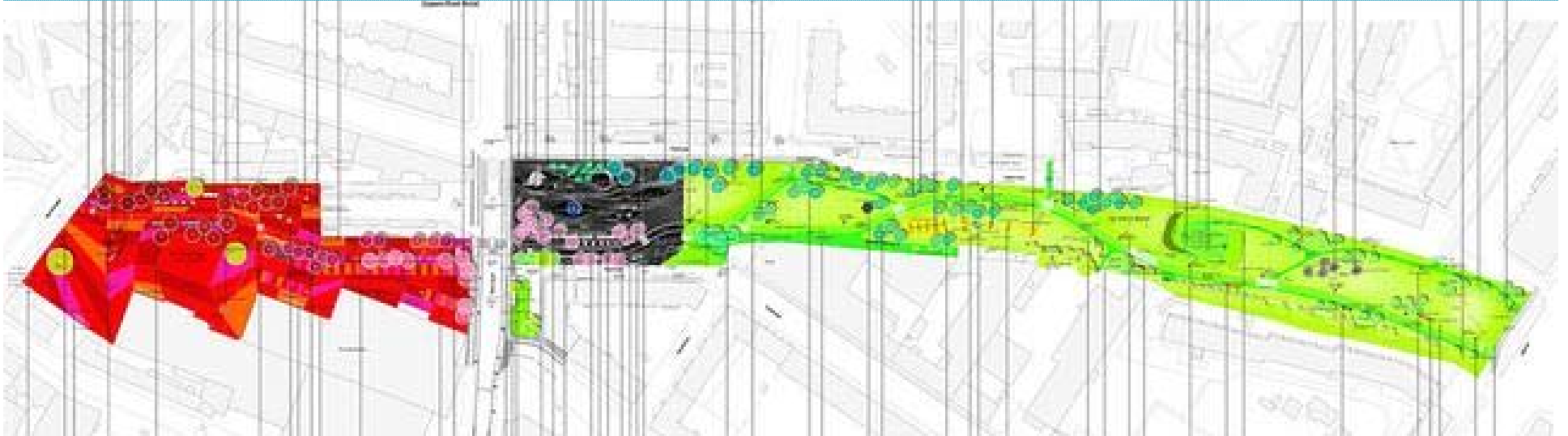


# Copenhagen Bicycle bridge





# Copenhagen Super Kilen Park





# 10 ideas for car-lite

## 10 IDEAS TO PREPARE CITIES FOR A CAR-LITE URBAN MOBILITY FUTURE

1

### Align Visions, Both Internally and Externally

- Internal alignment of vision across different teams within key agencies to ensure coherent efforts and targeted outcomes
- Make sure all relevant agencies and stakeholders are on board to ensure transport planning is not done in isolation from other related policies

2

### Focus on People's Needs, Work with Competition and Find Win-Win Solutions

- Provide customer-oriented services
- Public sector to encourage fair competition as a prerequisite for innovation, greater systematic efficiency and creation of an integrated package of "mobility as a service"
- Service providers to work with public sector to establish good understandings of newer mobility options such as ride-hailing and car/bike-sharing and their impact on the car-lite mobility ecosystem

3

### Create Development-based Mobility Demand Management Strategies

- End-users to play their parts in promoting sustainable travel behaviours
- Develop site/state-specific travel demand management plan that not only caters to local commuters' needs, but also ensures that all new development project contributes towards shaping cities' car-lite urban mobility
- Monitor progress over extended time

4

### Expand Public Transport Amenities to Cover the First-and-Last-Mile

- Develop high-quality public transport network as the backbone of cities' future mobility system
- Look beyond public transport network to also address commuters' first-and-last-mile needs
- Public transport service providers to form strong intermodal partnerships with taxi, car-sharing and bike-sharing providers to complete the trip ecosystem

5

### Manning Matters!

- Use planning to address underlying causes, instead of symptoms, of urban mobility challenges by finding ways of avoiding or shortening trips in the first place
- Bring jobs and homes closer to each other
- Encourage high-density mixed land uses around public transport nodes

6

### Put a Stop to Cheap and Easy Parking

- Ensure better understanding of current parking supply and demand to facilitate development of proactive policy interventions
- Consider a set of more stringent parking provision framework but calibrate provision standards against factors such as public transport accessibility and access to amenities and services
- Price parking correctly by exploring demand-responsive systems with the help of technologies
- District-wide parking strategies to encourage sharing and minimise redundancy of parking spaces

7

### Turn Street Design on its Head

- Get the fundamentals right by reviewing prevailing traffic planning and street design which generally prioritise vehicular traffic
- Fine-tune road categorisation and street design in favour of pedestrians, cyclists and public transit users wherever possible
- Make "complete streets" a planning and design norm

8

### Use Public Spaces as Common Ground for Public-Private-People Collaborations

- Public sector to lead/initiate transformation of car-dominated streets into people-oriented places
- Communities, businesses and other stakeholders to be included in developing their own car-lite mobility solutions/initiatives that are financially sustainable in the longer term and also sensitive to the local context

9

### Drive Change through Data-Driven Research and Pilots

- Embrace "trial and error" in public sector's decision-making process
- Use quick and cost-efficient pilot programmes to establish optimum and gather evidence

10

### Change Mindsets and Make Car-lite Mobility Cool

- Proactively shape perceptions instead of waiting for mindsets to change
- Influence commuters' travel choices through creative use of media, education and campaigns
- For a start, target specific groups of audiences, such as school children, corporations, public agencies, new residents and new employees





# Green Mark Scheme



- There are 1500 Green Mark Building projects in Singapore today.
- 80% of all buildings in Singapore will be 'green' by 2030.
- There are 4 key assessment criteria: Energy efficiency, water efficiency, environmental protection, indoor environment quality and other green features.

## BCA Green Mark Scheme



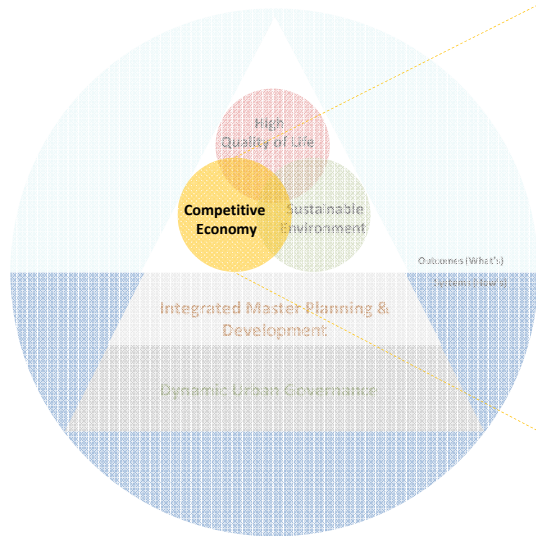


# Building Resilience





# Competitive Economy



- 1. Resilient Economy**
- 2. Competitive Workforce**
- 3. Inclusive Growth**

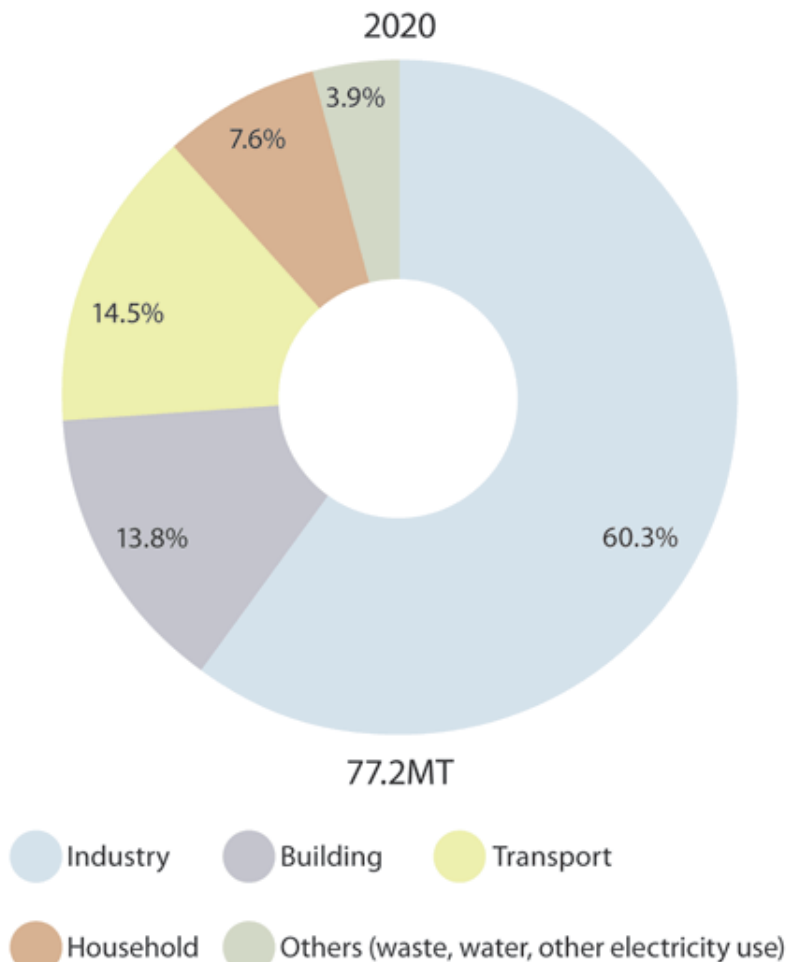
# Resilience



- The Paris Agreement at COP 21 is the first international climate agreement (195 countries and applicable to all)
- Aims to limit temperature rise to 1.5 to 2 degrees Celsius
- Flexible plan that takes into account the needs and capacities of each country
- Balanced adaptation and mitigation

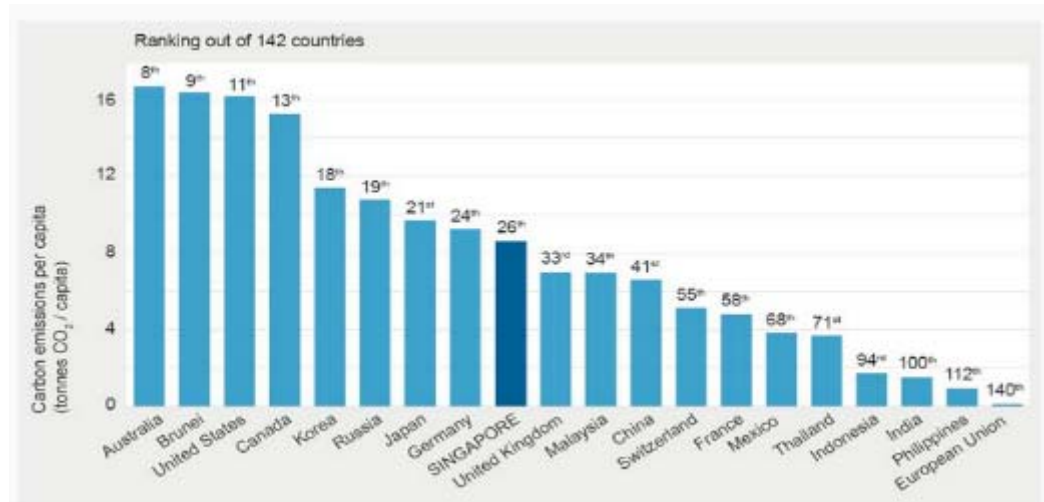


# Carbon Footprint Singapore



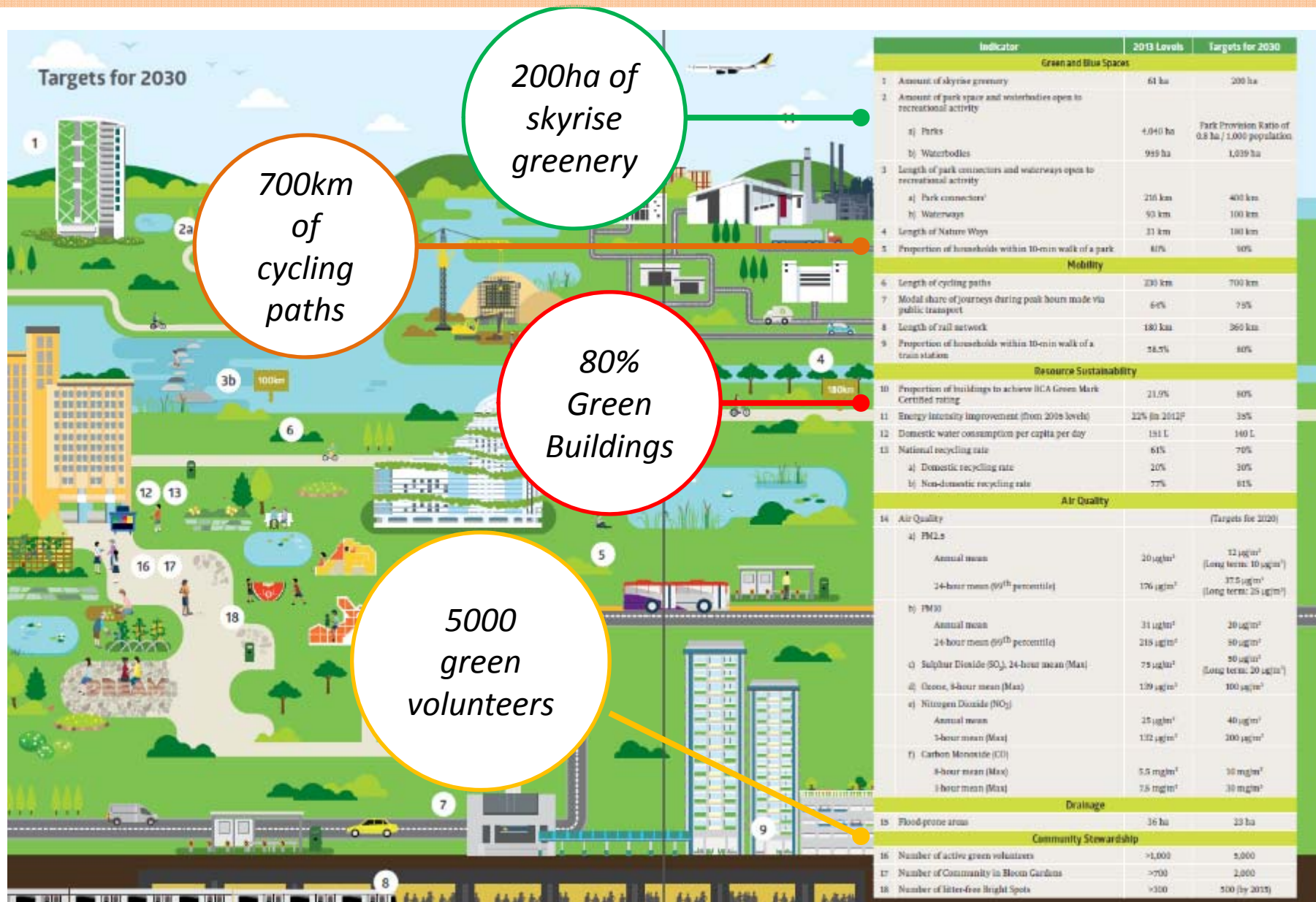
Note: Figure refers to total greenhouse gas emissions. Greenhouse gases other than carbon dioxide (CO<sub>2</sub>) are converted to their CO<sub>2</sub>-equivalent. The sectoral contributions do not add up to 100% due to rounding of the respective percentages to one decimal place.

- Singapore contributes around 0.11% of global emissions, or approximately 8.8 tonnes per capita, while Hong Kong has a carbon footprint of about 6.3 tonnes per capita.
- Singapore's strategic roll as a oil storage and refining facilities location is a large source of our carbon emissions.
- Singapore has pledged in 2010 to reduce our greenhouse gas emissions by 16% below Business-as-usual levels in 2020. We have also ratified the UN Framework Convention on climate change in 1997 and acceded to the Kyoto Protocol in 2006.
- Singapore has switched from fuel oil to more natural gas.
- Established the Efficiency Programme Office to drive energy efficiency across many different activities.



# Sustainable Singapore Blueprint

## Targets for 2030





# Resilience

- **Survive** – We needed to build resilience right from the beginning as we are an island with no resources, with land constraints and the only resource we have is our people.
  - **Secure** - Again, given our limited resources, we have to keep our country and economy open but in turn we are susceptible global economic uncertainties and terrorism
- Safe** - The importance of safety in our small island – from safe streets to food safety
- Space** - As a highly dense city, how do we plan for sustainable physical and social spaces that would weather crises?





# Survive - Creating Jobs for Everyone

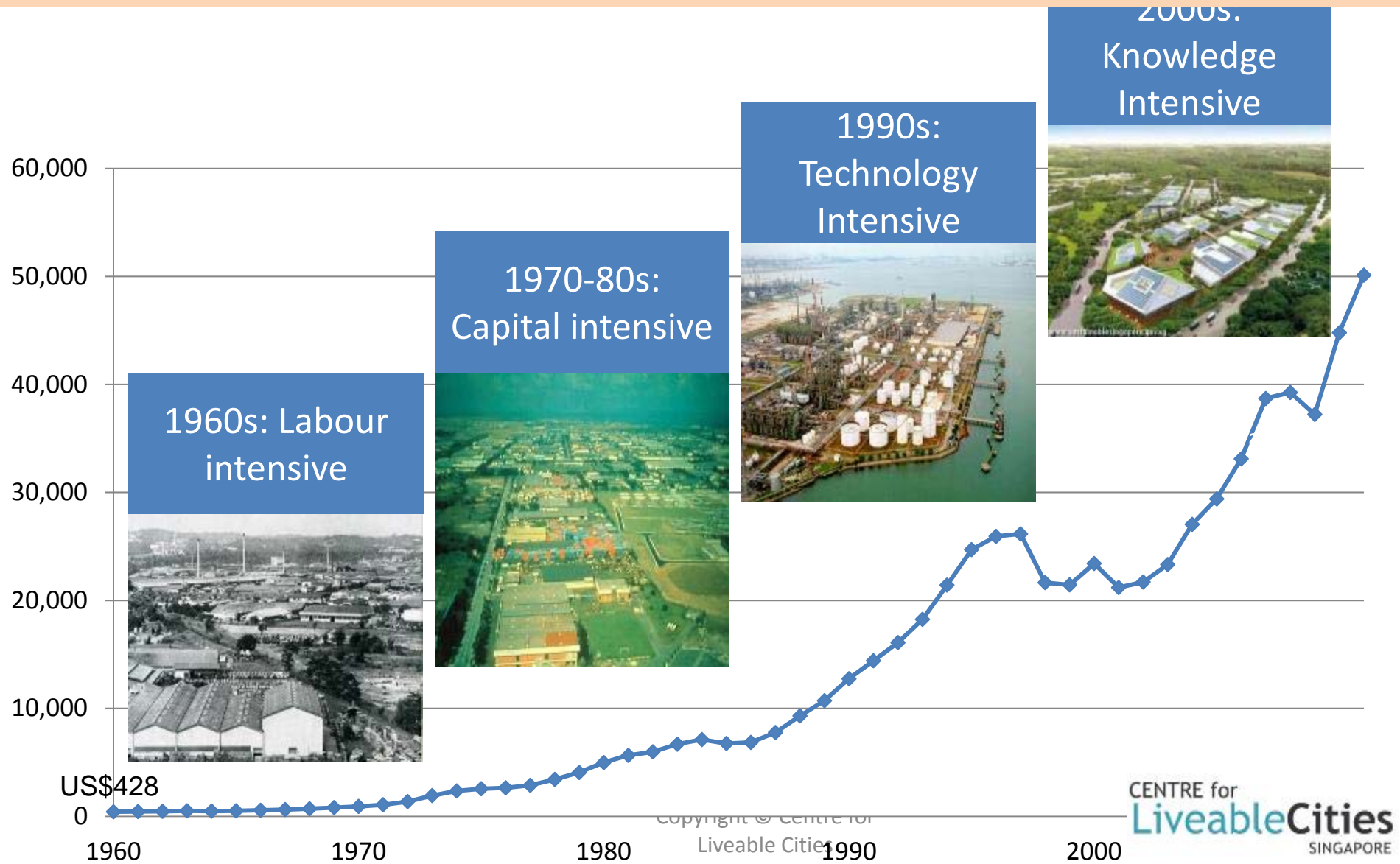




# Survive: Building a Nation

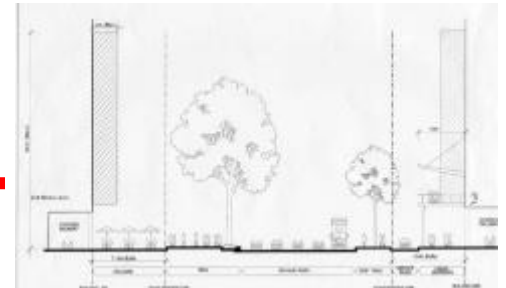
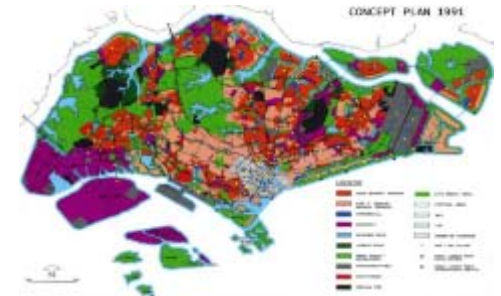
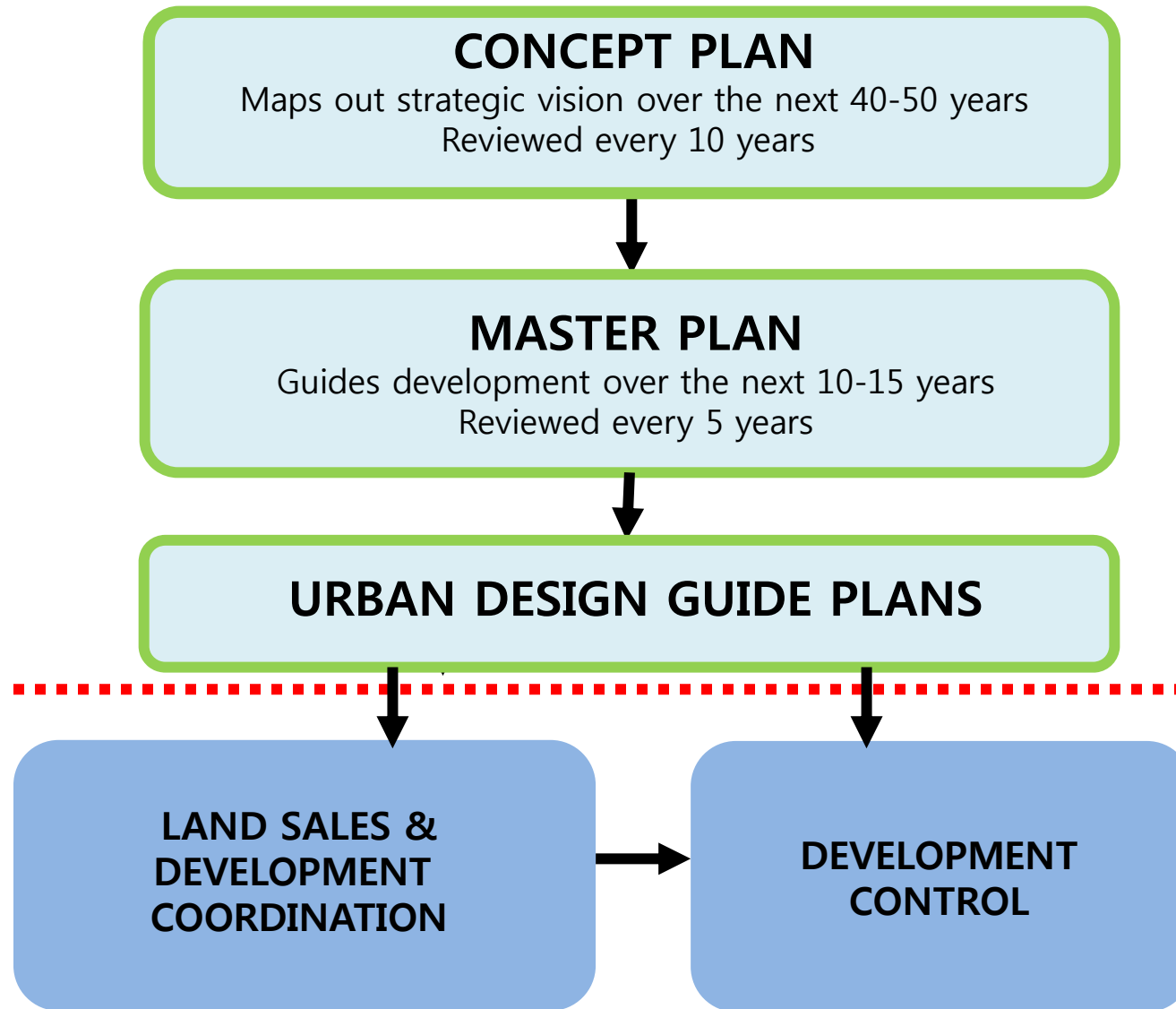


# Survive: Ensuring A Competitive Economy





# Singapore's Urban Planning System



# Secure: Fostering Cohesion



- **Home Ownership**
  - 82% of our resident population lives in public housing
- **Integrated towns, Shared Spaces**
  - Mixture of housing types in a neighbourhood
  - Shared spaces e.g. Void Decks
  - Ethnic Integration Policy





# Secure: Building Communities



- **Community Spaces**
  - Upcoming first-ever integrated community and lifestyle hub
  - Offers a range of services and facilities e.g. Medical Clinic, Community Library
- **Community building programmes**
  - Community in Bloom Programme



# Secure: Engaging Community



## Nation-wide programme

A national programme to sensitise, train and mobilise our citizens in the event of a crisis



## Community Engagement Efforts

Engaging citizens through dialogue and discussion sessions



## Grassroots Organisations

Foster community cohesion and build networks of trust across different racial and religious groups



# Secure: Singapore Heritage Festival



- The Singapore HeritageFest is an annual event aiming to raise awareness and appreciation of Singapore's rich heritage through specially-curated exhibitions, heritage trails, competitions, cultural performances, community activities and more.
- One key drive is to nurture a generation of heritage champions to play active roles in promoting Singapore's heritage.





# Secure: Singapore Heritage Festival

## MY QUEENSTOWN HERITAGE TRAIL

JOIN US IN A  
MAGICAL  
JOURNEY  
THROUGH  
SINGAPORE'S  
FIRST  
SATELLITE  
TOWN!



Do you know the first HDB block, the first polyclinic, the first branch library and the first sports complex are built in Queenstown?



Free, guided tours take place at the last Sunday of every month. Each guided tour is about 2 hours long and starts punctually at 10am from Queenstown MRT Station.

Get a registration form from the reception counter at Queenstown Community Centre and indicate your preferred month and date. A confirmation SMS or email will be sent to successful applicants.

For more information on the guided tour, please contact Queenstown Community Centre at 6474 1681 or visit [www.facebook.com/myqueenstown](http://www.facebook.com/myqueenstown) and [www.queenstown.sg](http://www.queenstown.sg).

### IMPORTANT NOTE

- Guided tours are limited to 25 participants per session, on a first come, first served basis.
- Participants are advised to wear comfortable clothes and shoes and bring along a bottle of water, and an umbrella. You may also wish to bring along a bottle of insect repellent.
- Tours are conducted in English and Mandarin only.

- Heritage trails enable participants to deep dive into Singapore's rich historical and social memory.
- Schools, in particular are roped into document their community's heritage for posterity, allowing students to participate in the recording of their stories within the Singapore story.

## Singapore River Walk

The 14 heritage sites

- 1 Robertson Quay
- 2 Alkaff Bridge
- 3 Old Bridge
- 4 Tan Si Chong Su Temple and Clemenceau Bridge
- 5 Masjid Omar Kampong Melaka
- 6 Former Thong Chai Medical Institution
- 7 Read Bridge

- 8 Clarke Quay (featuring River House, The Cannery and Whampoa's Ice House)
- 9 Coleman Bridge
- 10 Elgin Bridge
- 11 Boat Quay
- 12 Raffles Place (featuring Change Alley, Market Street and Masjid Moulana Mohamed Ali)
- 13 Cavenagh Bridge
- 14 Collyer Quay (featuring Clifford Pier and Customs House)



PHOTOS: NATIONAL HERITAGE BOARD, ST FILE, ST GRAPHICS



# Secure: Singapore Heritage Festival



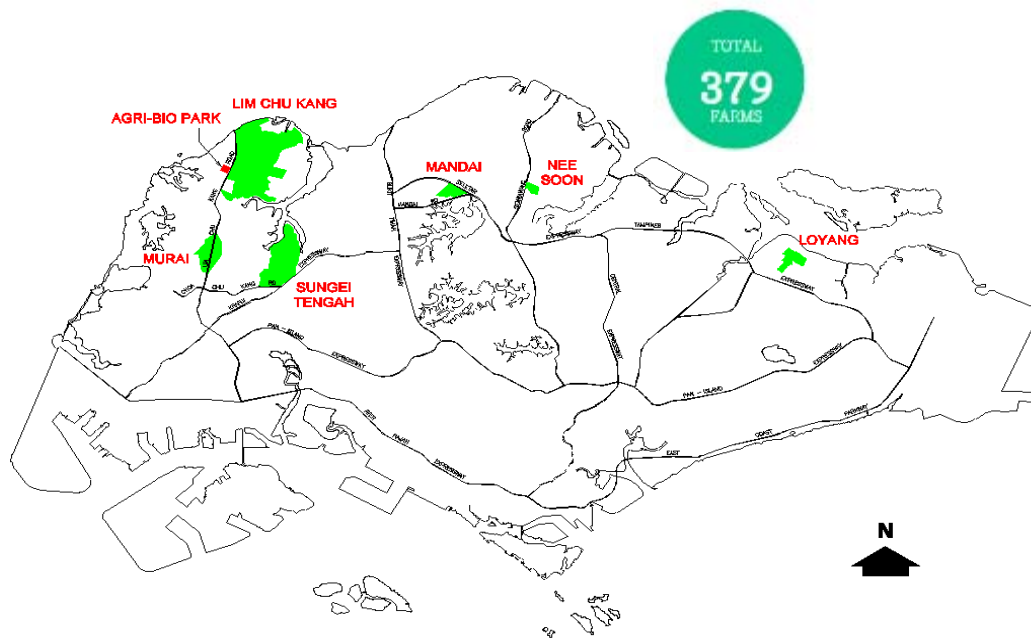
- Actors roam the Singapore river and portray characters who once lived and worked along the river, such as tradesmen, coolies, samsui women, a snake charmer and a letter writer.
- Actors also portray living culture such as weddings for an intercultural experience.





# Safe: Maintaining Self-Sufficiency

Ensuring a resilient supply of safe food



## Future Goals





# Safe: Building for Resilience

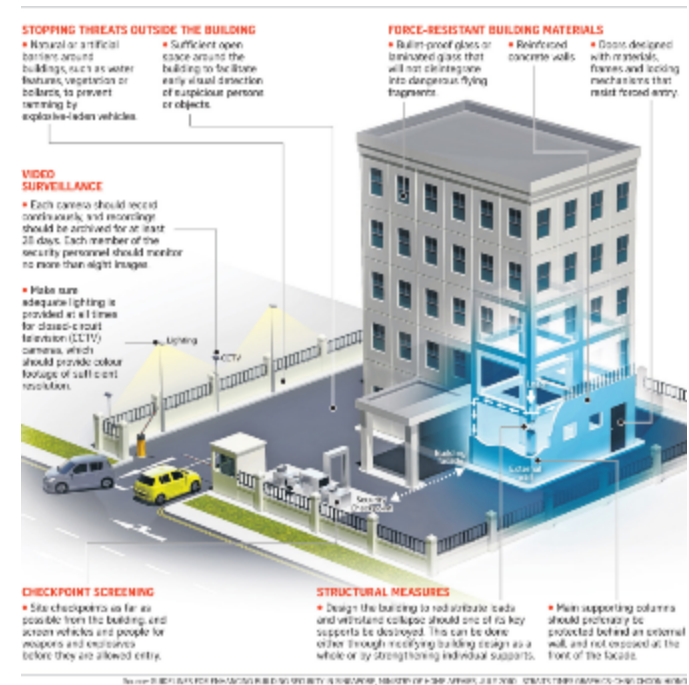
## Minimum Platform Levels & Flood Barriers

- The minimum platform level for important underground facilities e.g. Transit stations cannot be lower than 1 metre above the adjacent road / ground level or 1 metre above the highest recorded flood level
- Watertight barriers to protect underground stations and tunnels



## Guidelines for Enhancing Building Security

- Structural measures designed to within pressure and redistribute loads and use of force-resistant building materials
- Surveillance measures and natural artificial measures



# Space: Conserving Heritage

**Singapore's Historic Districts :** Chinatown, Little India, Kampong Glam



**Cultural and Civic District Plan, Museums and Heritage Centers**





# Space: Qianhai Harbour, “Water City”, Shenzhen



- Five coastal corridors are created, which lead from inland to the Qianhai Harbour.
- These ‘water fingers’ also serve as storm water treatment infrastructure and create inter-connected waterfront neighbourhoods.





# Space: DakPark, Rotterdam

- 1km long and 85m wide park on top of the roof of a shopping boulevard
- Also a storm water defense structure
- Co-created with residents, who were concerned with usability, leading to an innovative use of 'stacking' different functions such as shopping, parking, a playground, a resident's garden and a greenhouse.





# Space: Olympic Sculpture Park, Seattle



- The design of the Olympic Sculpture Park allows 3 separate sites to be connected through a 'Z-shaped' green platform, making the waterfront accessible.
- Landforms and plantings direct, collect, and cleanse storm water before it is discharged into Elliot bay.



Precincts: A. Greenward B. Valley (with Richard Serra's Wake) C. Meadows D. Grove E. Shore F. Tide  
1. Pavilion 2. Sculpture (Alexander Calder's Eagle) 3. Sculpture (Tony Smith's Stinger)

# Space:

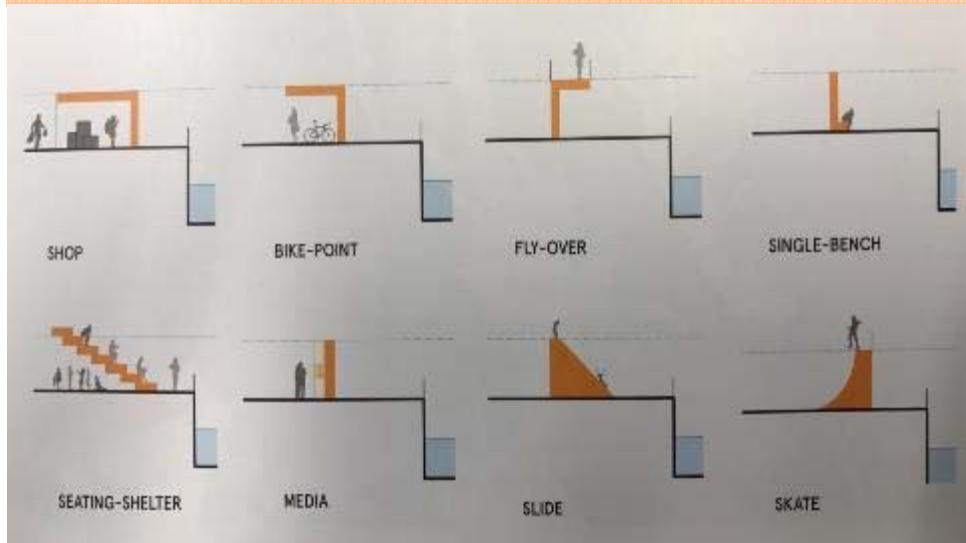
## The Big U, New York City

- 10-mile protective system that encircles Manhattan, protecting the city from floods and storm water, and to provide public realms for the city's diverse communities.
- Three regions, termed compartments, are created as a separate flood-protection zone, isolated from flooding in other zones.
- The compartments are designed to reflect the diversity of the local community.





# Space: The Big U, New York City



# Reimagining Liveability

1. Singapore's Liveability Framework

2. Go Car-lite

3. City with Nature

4. Building in Resilience



# Our Shared Responsibility

- We inherited many of the problems of the 20<sup>th</sup> century, but we can and must do better for the 21<sup>st</sup> century.
- We are all part of an ecosystem that is striving towards the vision of a sustainable and liveable world.
- It is a realizable vision, if we continue to pursue passionately in our belief of a better future.





# Reimagining Liveability



- Can we build a neighbourhood within a school?
- Can an incineration plant also serve as a ski slope?
- Can rooftops become an open communal space?







CENTRE for  
**LiveableCities**  
SINGAPORE

Copyright © Centre for Liveable Cities

# A Resilient Singapore

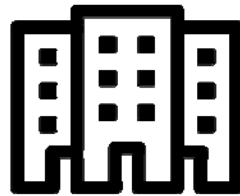
## Current and Future Challenges

**Limited land area**  
720km<sup>2</sup> in 2015 to  
766km<sup>2</sup> in 2030

**Population Growth**  
5.5mil in 2015 to  
~6.9mil by 2030

**Global challenges**  
Climate change, global  
economic uncertainties

**Changing  
Demographics**  
Ageing population &  
increasing diversity  
from immigration





# Secure: Night Festival Singapore



- Singapore night festival was part of the Renaissance City Plan III by the National Arts Council
- It aims to re-invent Singapore as a vibrant magnet for international talent and the best home to an inclusive and cohesive population.



# Space: The Offices with Terraces Project



- Combination of flexible working spaces with greenery suited for the project's mediterranean climate.
- Offices open onto outdoor terrace areas, allowing meetings to be held outside.
- Includes a rainwater collection system that irrigates greenery.



# Survive: Vision Zero Singapore

*“[W]e need to have Vision Zero embedded... as **part of the DNA and the organization’s culture**. We must believe that we should prevent all injuries and be healthy at work. Not just we should, but we can and I think we must.”* – Minister of Manpower and Minister for Social and Family Development, Tan Chuan-Jin



# Hudson Yards



## West Side Renaissance

A residential and hotel boom is already under way on 42nd Street and south along Ninth and Tenth Avenues. Developers are poised with plans for commercial towers in the industrial district and rail yard nearby.

**SUBWAY EXTENSION** The extension of the No. 7 line is under way and work on a tree-lined boulevard begins next year.

**WEST SIDE YARDS** Over the past two decades, there have been plans to build stadiums for the Olympics and the Yankees and Jets on platforms over the active rail yard. Now, Related Companies hopes to build 12 residential and commercial towers and a park. Coach has agreed to anchor the first tower.

**MANHATTAN WEST** Using bridge-building techniques, Brookfield plans to start construction early next year of a platform over a rail line that will eventually support three towers.

**OHM** This 34-story building has filled with a roster of young artists, filmmakers and entrepreneurs.

Recently built  
Development sites

- Hudson Yards is a large development spanning 14 buildings, across 28 acres covering 17 million square feet of residential and commercial space with a community of about 125,000 people under a single developer.
- This gave it opportunity to unify the residential, commercial and retail structures and also link to the Hudson river waterfront, high line district and the future Hudson boulevard park.



THE NEW YORK TIMES



# Bringing it together: Singapore's Rail Corridor



- Previously part of the Keretapi Tanah Melayu railway, the rail corridor became a site for development when the railway station was relocated to Woodlands in 2011.
- Spanning 25.3km, and covering an area of 170 hectares, the area was co-created with civil society and the general public.
- Through various engagement exercises, URA identified 9 key points for the request for proposal exercise, such as:
  - The rail corridor should retain its identity as a green corridor
  - The seamless connectivity of the rail corridor should be reestablished for pedestrians and cyclists to use and enjoy
  - The corridor should maintain its biodiversity so that it remains as an ecological corridor
  - The rail corridor's sense of place and memory should be captured in its development.





# Bringing it together: Singapore's Rail Corridor





# Bringing it together: Singapore's Rail Corridor





# Bringing it together: Reimagining Tampines





# Survive:

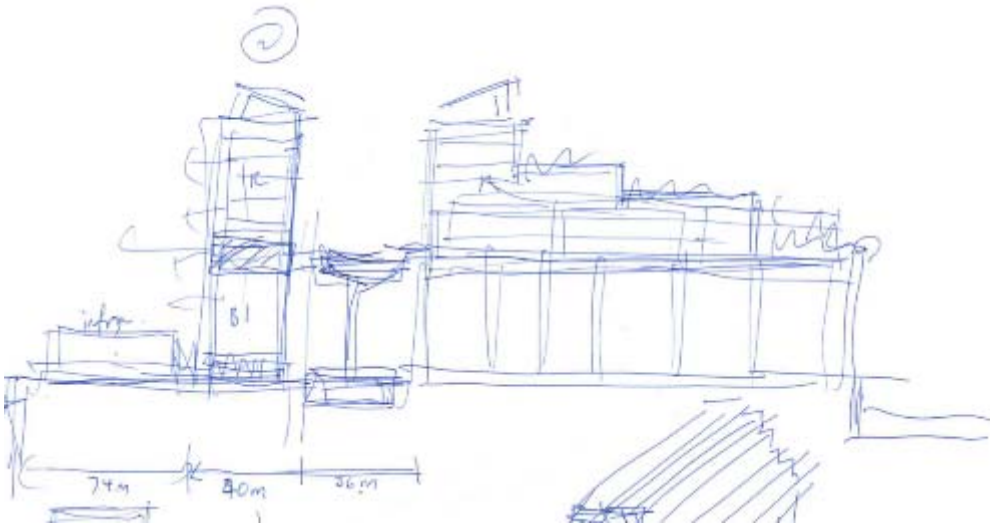
## Arab Street and Haji Lane, Singapore

- Kampong Glam was gazetted as a conservation area by URA in 1989 and Arab Street was one of URA's pilot conservation project.
- Arab street houses Singapore's first generation shophouses of squat two-storey buildings with one or two windows on the upper floor façade.
- Haji lane, a conservation area, that re-invented itself into Singapore's little bohemia.



# Space:

## US Pavilion designs for Detroit at the Venice Biennale



- Detroit was chosen as a site for 'The Architectural Imagination', where 12 architects present plans for 4 underutilized areas in Detroit.
- One example is the former packard automobile plant, which was reimagined as a new-age factory that manufactures robots and autonomous vehicle technology.