



GEF-Satoyama Project

Facilitating Resilience in Socio-ecological Production Landscapes and Seascapes (SEPLS) through the GEF-Satoyama Project

Devon Dublin, PhD, Project Coordinator, GEF-Satoyama Project
ADB 50th Annual Meeting, Yokohama, Japan, May 7, 2017



gef GLOBAL ENVIRONMENT FACILITY
INVESTING IN OUR PLANET

**CONSERVATION
INTERNATIONAL**



Japan

This is not an ADB material. The views expressed in this document are the views of the author/s and/or their organizations and do not necessarily reflect the views or policies of the Asian Development Bank, or its Board of Governors, or the governments they represent. ADB does not guarantee the accuracy and/or completeness of the material's contents, and accepts no responsibility for any direct or indirect consequence of their use or reliance, whether wholly or partially. Please feel free to contact the authors directly should you have queries.

GEF-SATOYAMA PROJECT

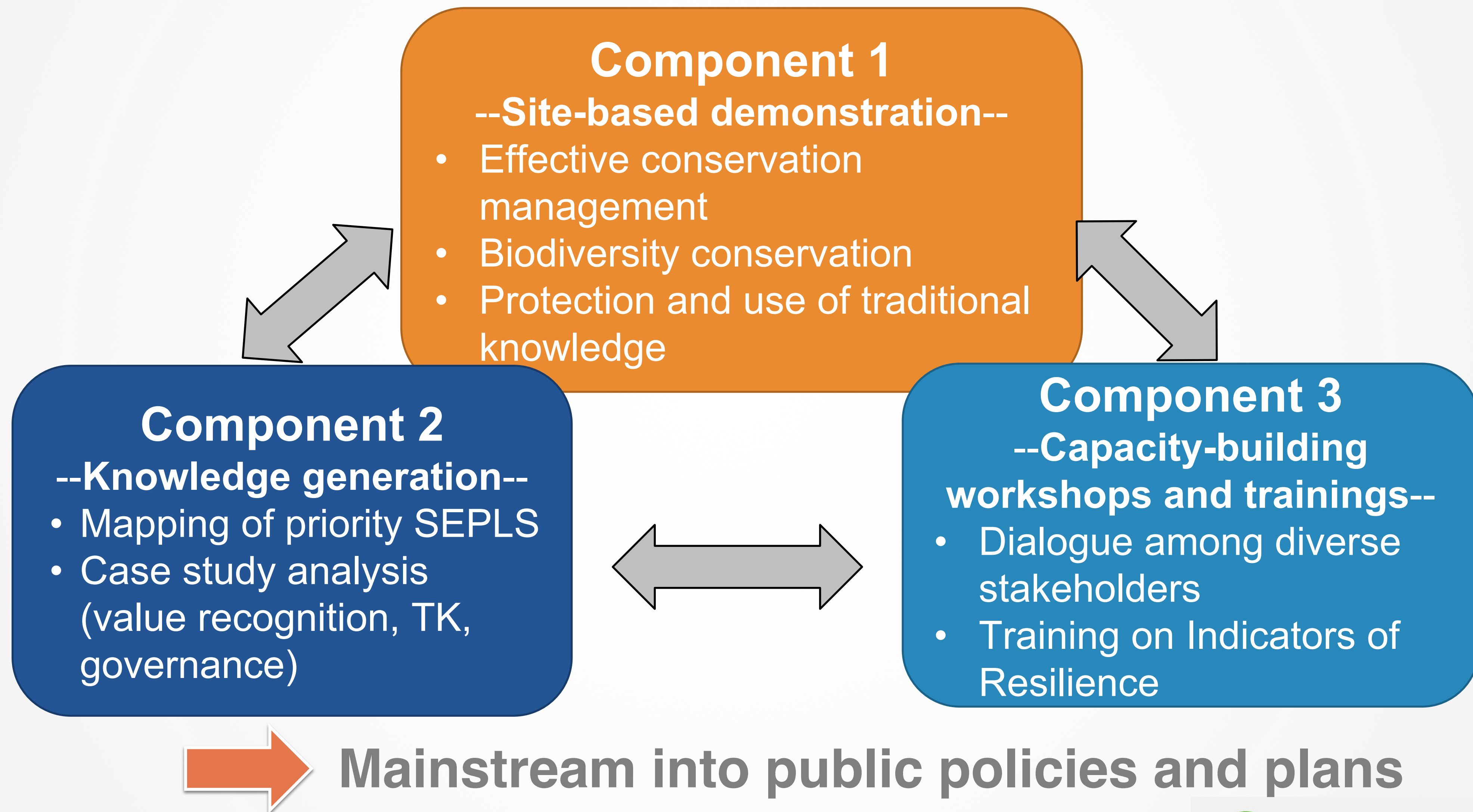
Mainstreaming biodiversity conservation and sustainable management in priority Socio-ecological Production Landscapes and Seascapes

- ❑ **Project Vision:** Society in harmony with nature, with sustainable primary production sector based on traditional and modern wisdom, and making significant contributions to global targets for conservation of biological diversity
- ❑ **Project Objective:** To mainstream conservation and sustainable use of biodiversity and ecosystem services, while improving human well-being in priority Socio-Ecological Production Landscapes and Seascapes

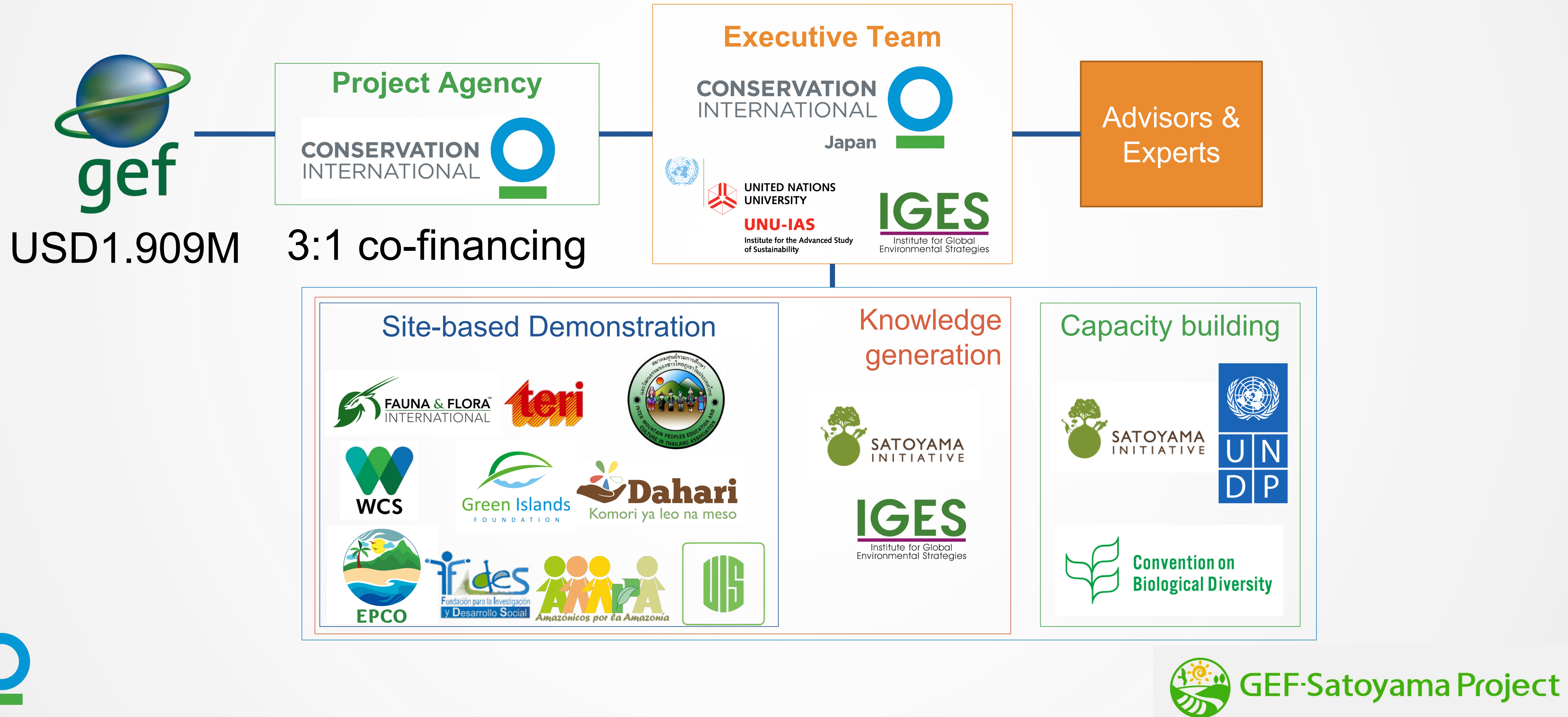


GEF-Satoyama Project

PROJECT COMPONENT



INSTITUTIONAL ARRANGEMENT



SUSTAINABLE DEVELOPMENT GOALS (SDGs)



Specifically addressed



Indirectly addressed



GEF-Satoyama Project

10 SITE-BASED PROJECTS



The Energy and Resources Institute (TERI)



Inter Mountain Peoples' Education and Culture in Thailand Association (IMPECT)

Universidad Industrial de Santander (UIS)



Fauna & Flora International (FFI)

Green Islands Foundation (GIF)



Wildlife Conservation Society (WCS)



Environnemental Protection & Conservation Organisation (EPCO)

Fundación para la Investigación y Desarrollo Social (FIDES)



Asociación Amazónicas por la Amazonía (AMPA)



GEF-Satoyama Project

INDICATORS OF RESILIENCE IN SEPLS TOOLKIT



- Chinese
- English
- French
- Japanese
- Malagasy
- Spanish
- Thai
- Vietnamese

<https://pub.iges.or.jp/pub/toolkit-indicators-resilience-socio-ecological>



GEF-Satoyama Project

INDICATORS OF RESILIENCE TRAINING UNDER THE GEF-SATOYAMA PROJECT



Indo-Burma (Chiang Mai, Thailand)



IUCN WCC (Hawaii, USA)



Tropical Andes (Puerto Lopez, Ecuador)



Madagascar and Indian Ocean Islands
(Moramanga, Madagascar)



GEF-Satoyama Project

INDICATORS OF RESILIENCE USE BY GRANTEEES FOR MONITORING AND EVALUATION



Green Islands Foundation
(Seychelles)



Fauna & Flora International (Myanmar)



Fundación para la Investigación y
el Desarrollo Social (Ecuador)



Universidad Industrial de Santander
(Colombia)

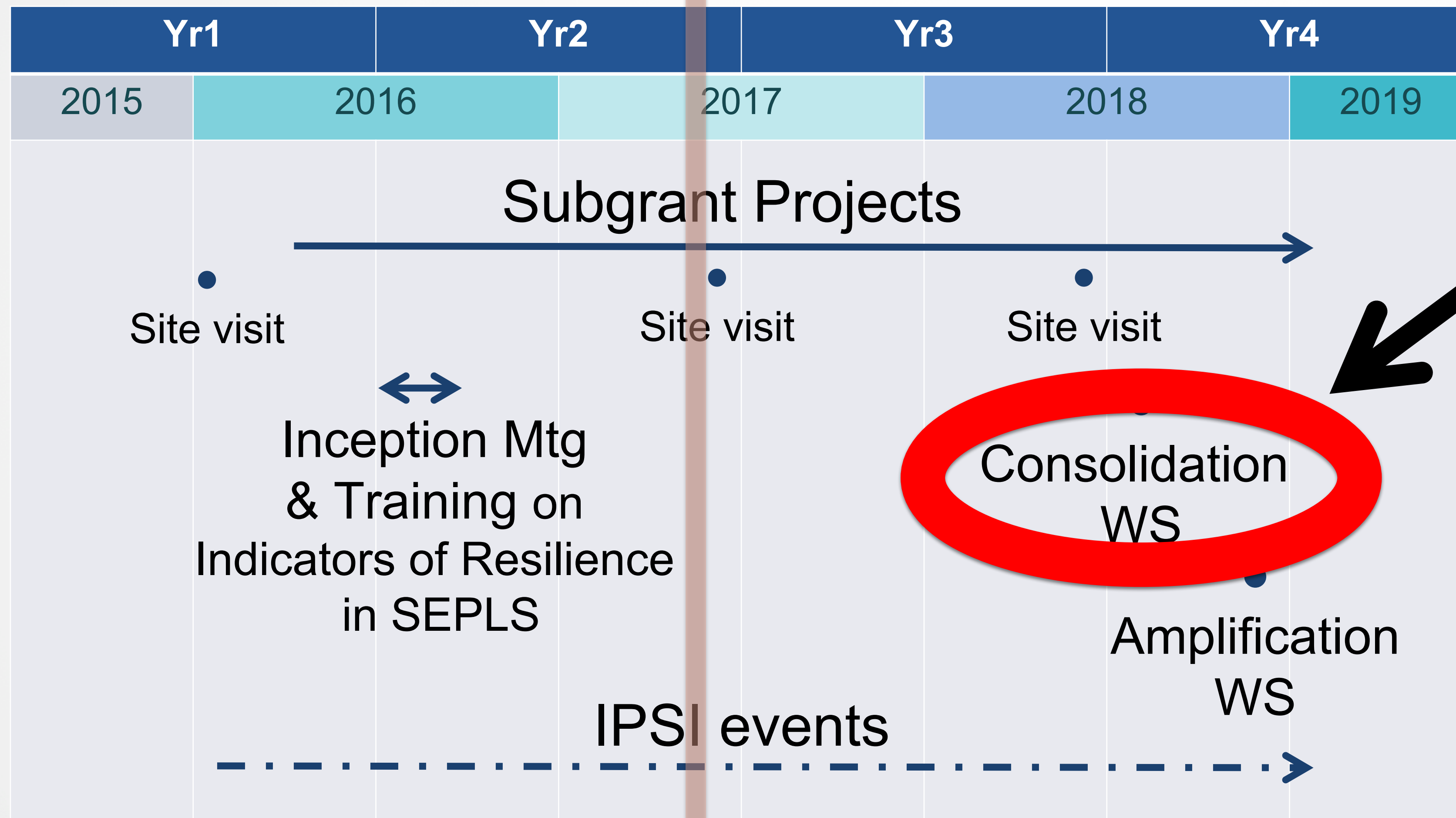


MADAGASCAR: AN IMPORTANT EXAMPLE



GEF-Satoyama Project

PROJECT SCHEDULE



COMDEKS Community development and knowledge management for the *Satoyama* Initiative

Fund	Japan Biodiversity Fund
Implementing Agency	UNDP
Financing Status	US\$10 million Implementation



GEF-Satoyama Project



Thank you!

ddublin@conservation.org

