

Integrated Approach to Digital Government

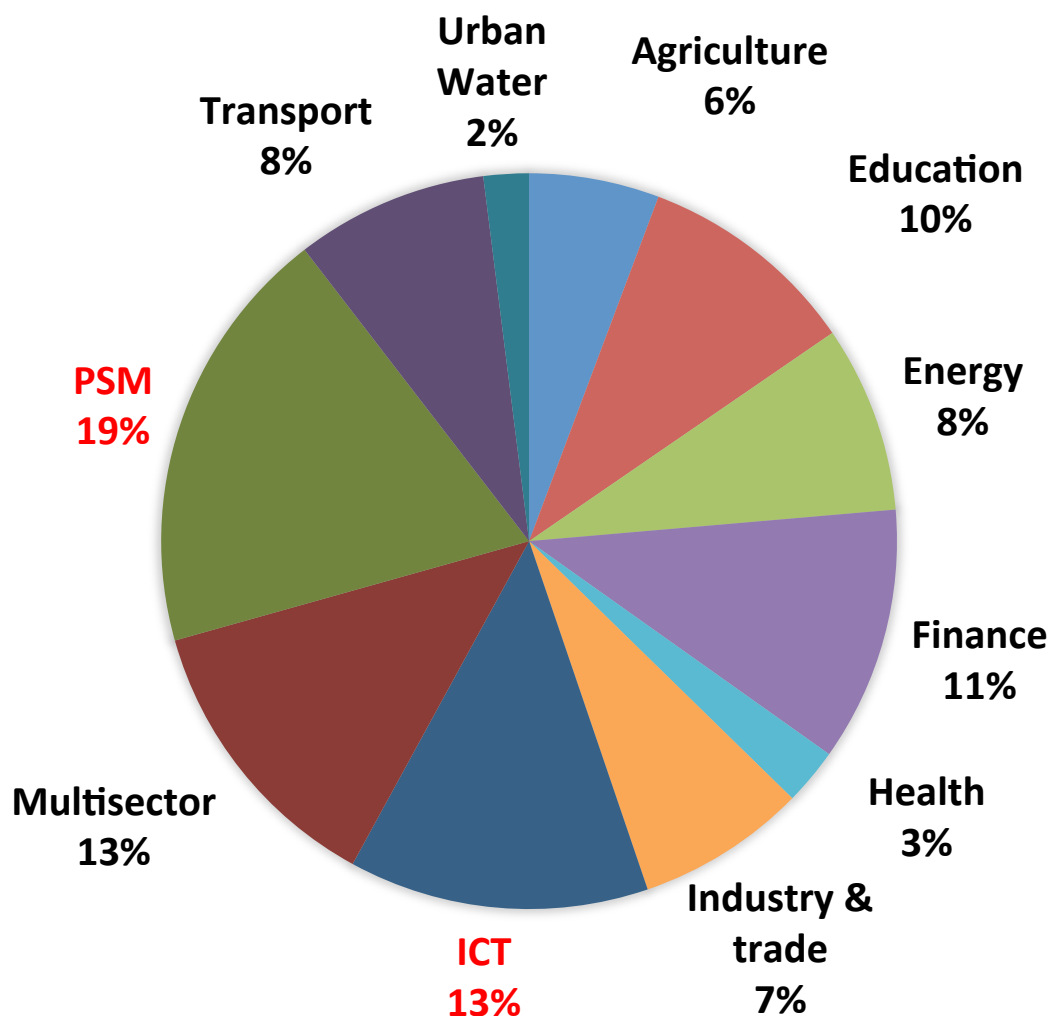
Seok-Yong (“SY”) Yoon
Senior Public Sector Specialist (e-Governance)
Asian Development Bank



TOPICS

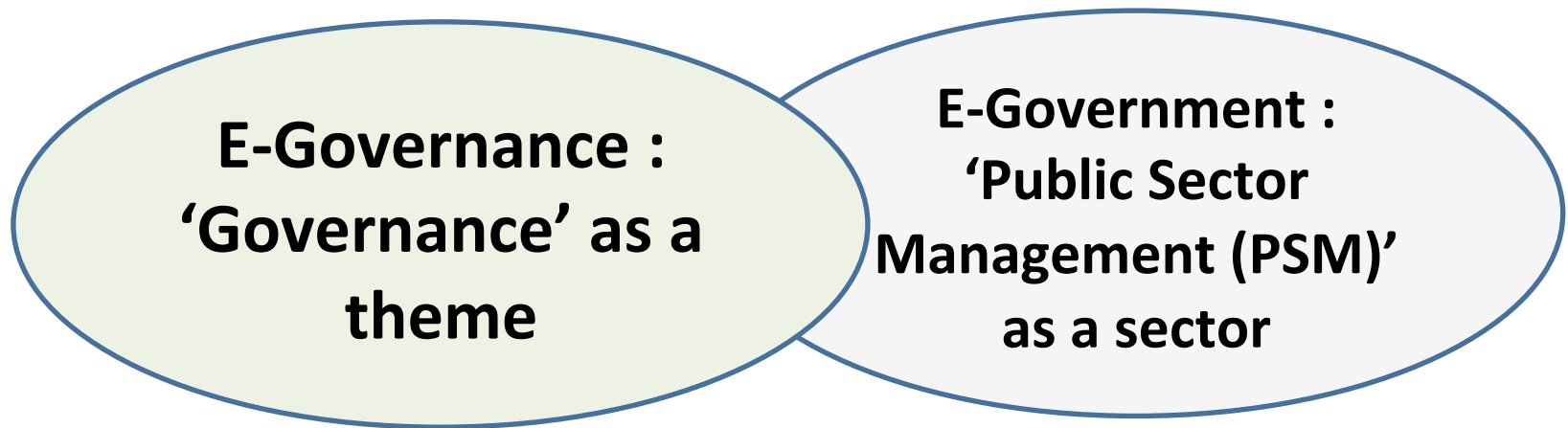
- Three Aspects of e-Government
- Integrated Approach for Digital Government
- Partnership in Actions

ADB ICT Projects (2000-2015)



Sector	Number
Agriculture	23
Education	39
Energy	33
Finance	45
Health	10
Industry & trade	30
ICT	53
Multisector	51
PSM	76
Transport	34
Urban and water	8
Total	402

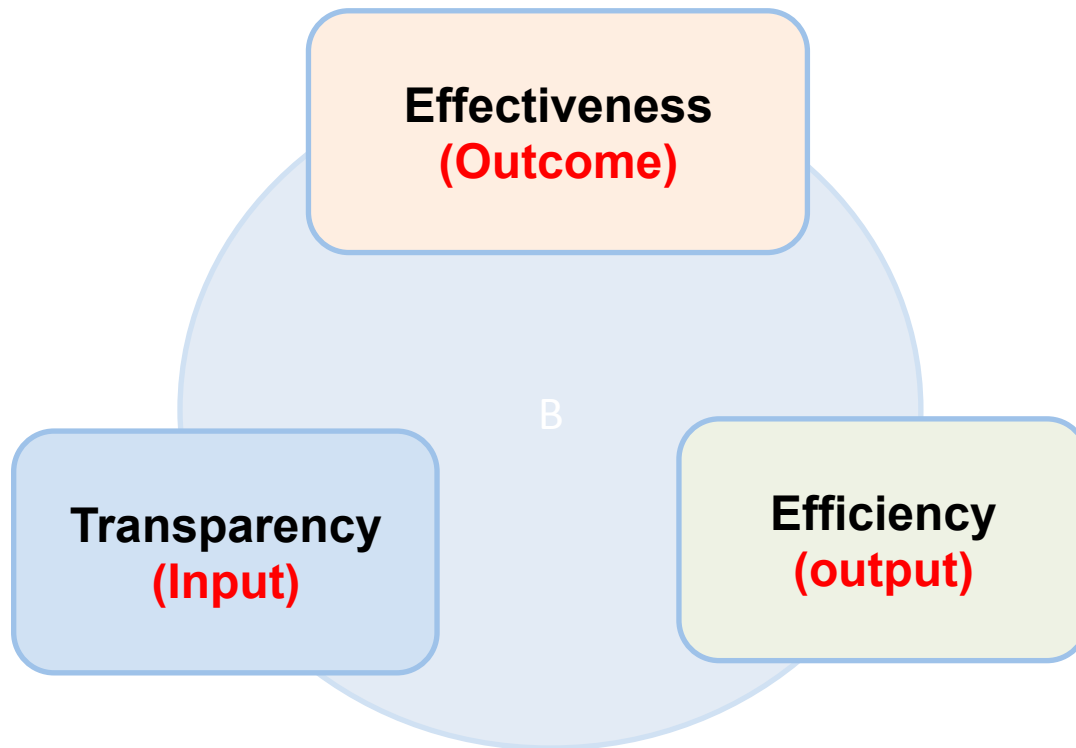
E-Government



- Governance: ADB has focused on improving public finance management and procurement, and anti-corruption related to ADB operations
- PSM: ADB is supporting the broader areas of government reforms and e-services by the use of ICT

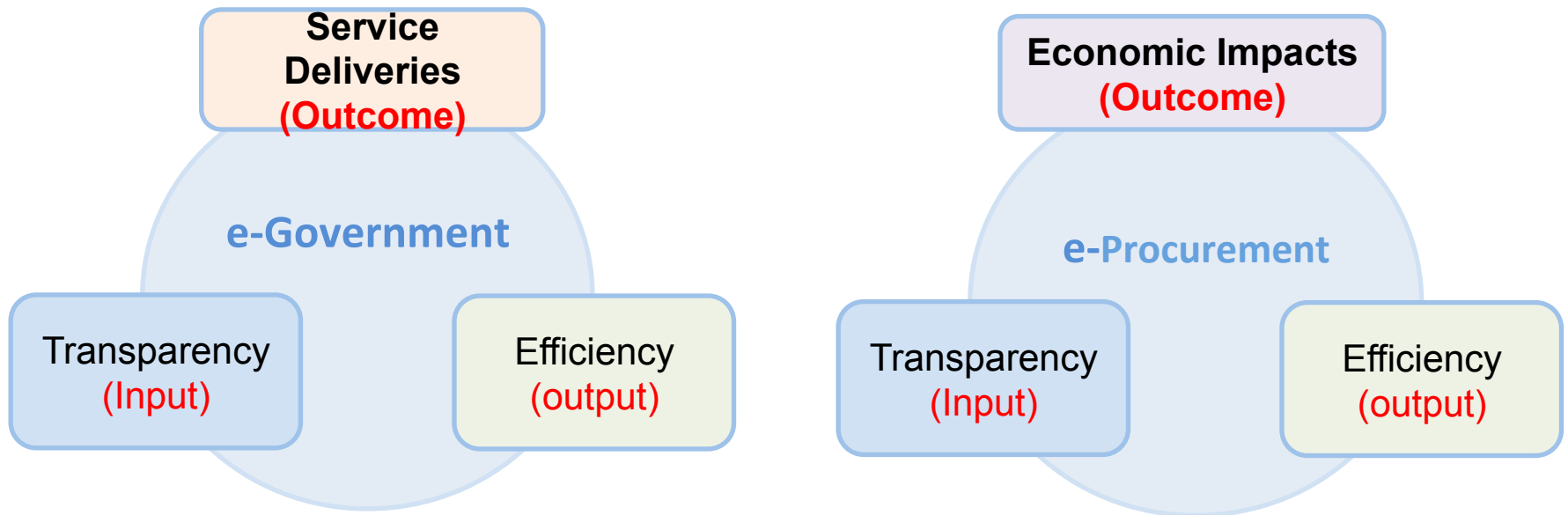
e-Government

ICT use in government for changes on governance and public services



e-Government vs. e-Procurement

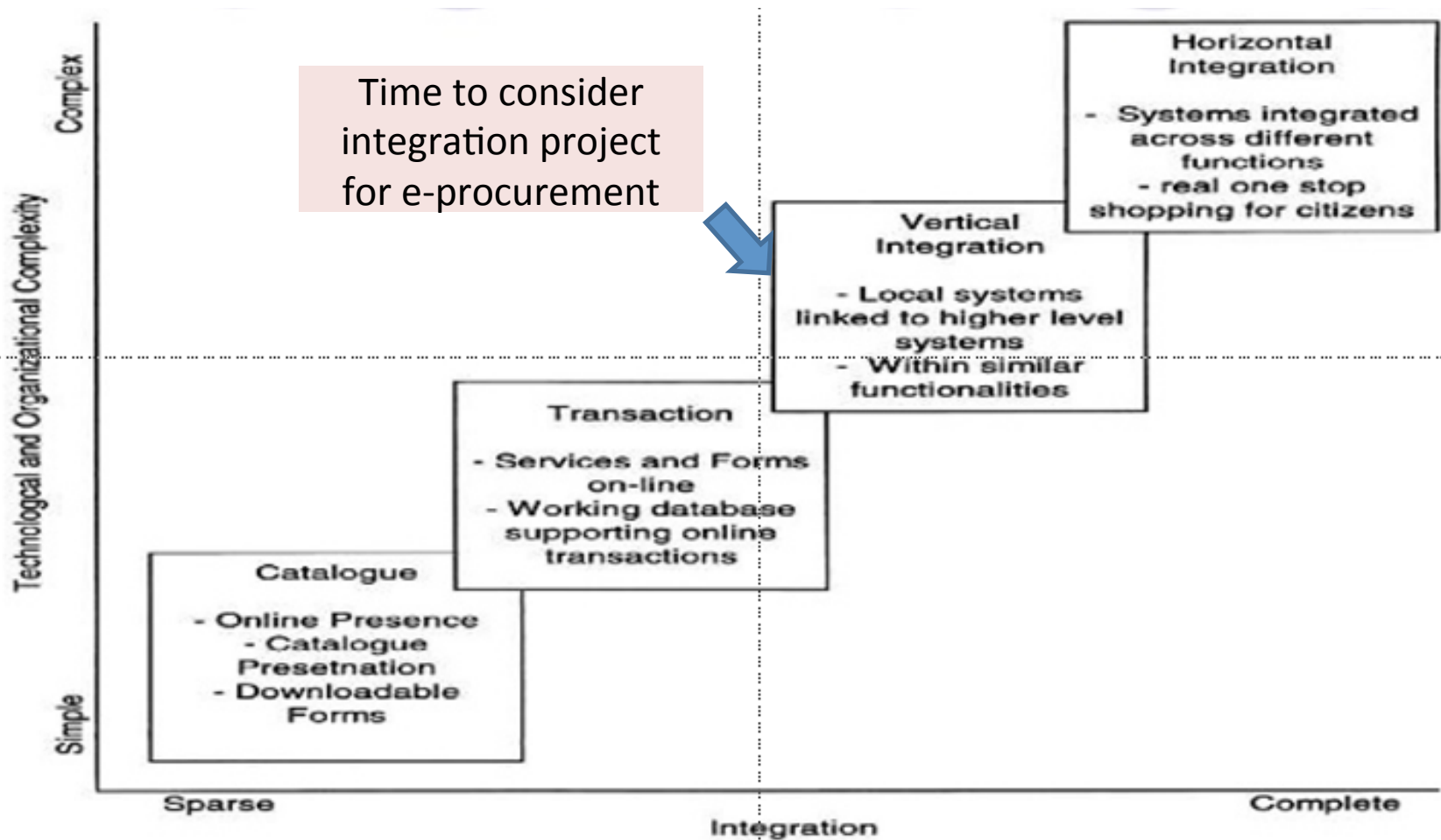
In addition to the traditional role of e-GP, it promotes competition, productivity and SMEs and economic decentralization



Integrated Approached for e-Government

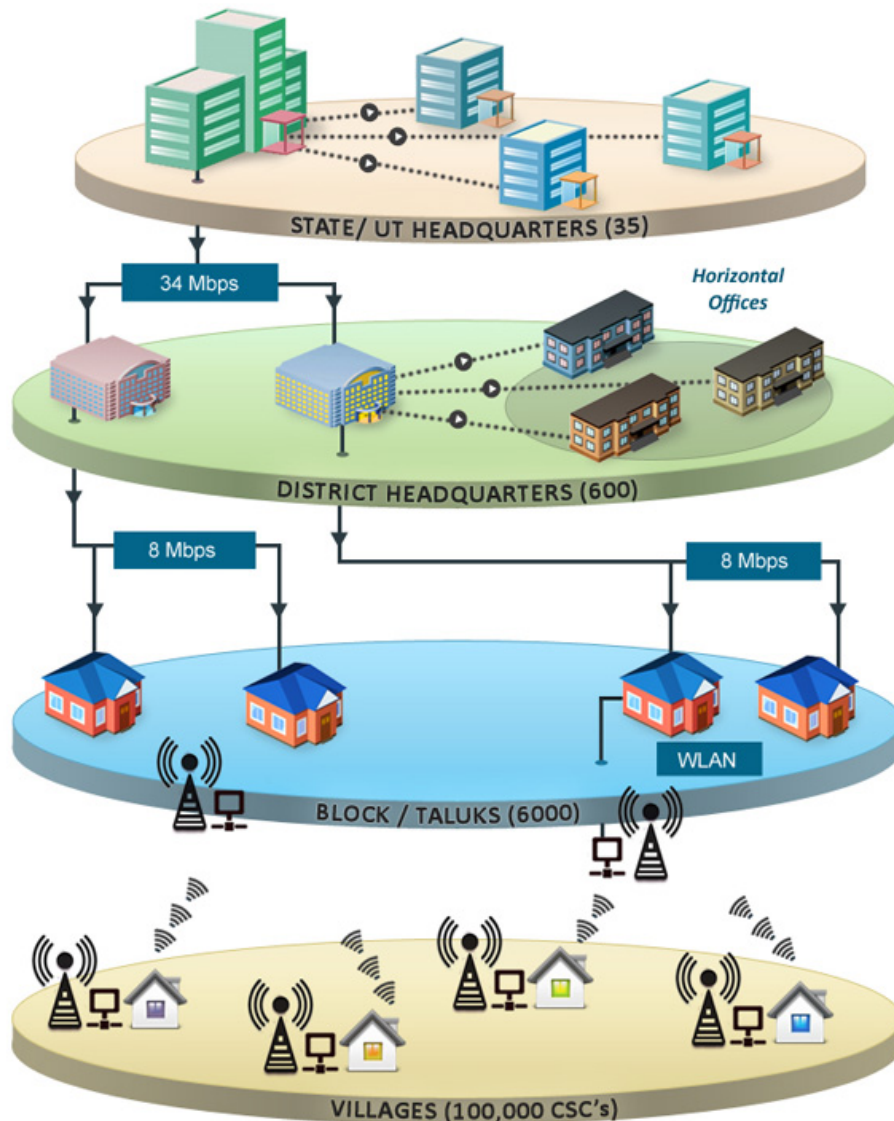
1. Access to e-Government
2. Management efficiency for IT systems
3. Information Sharing and Exchange
4. Government portal: One Stop Service

Developmental Stages of e-Government



<Figure 1> Dimensions and stages of e-government development (Layne and Lee, 2001)

Integrated ICT Platform – e-Government Network

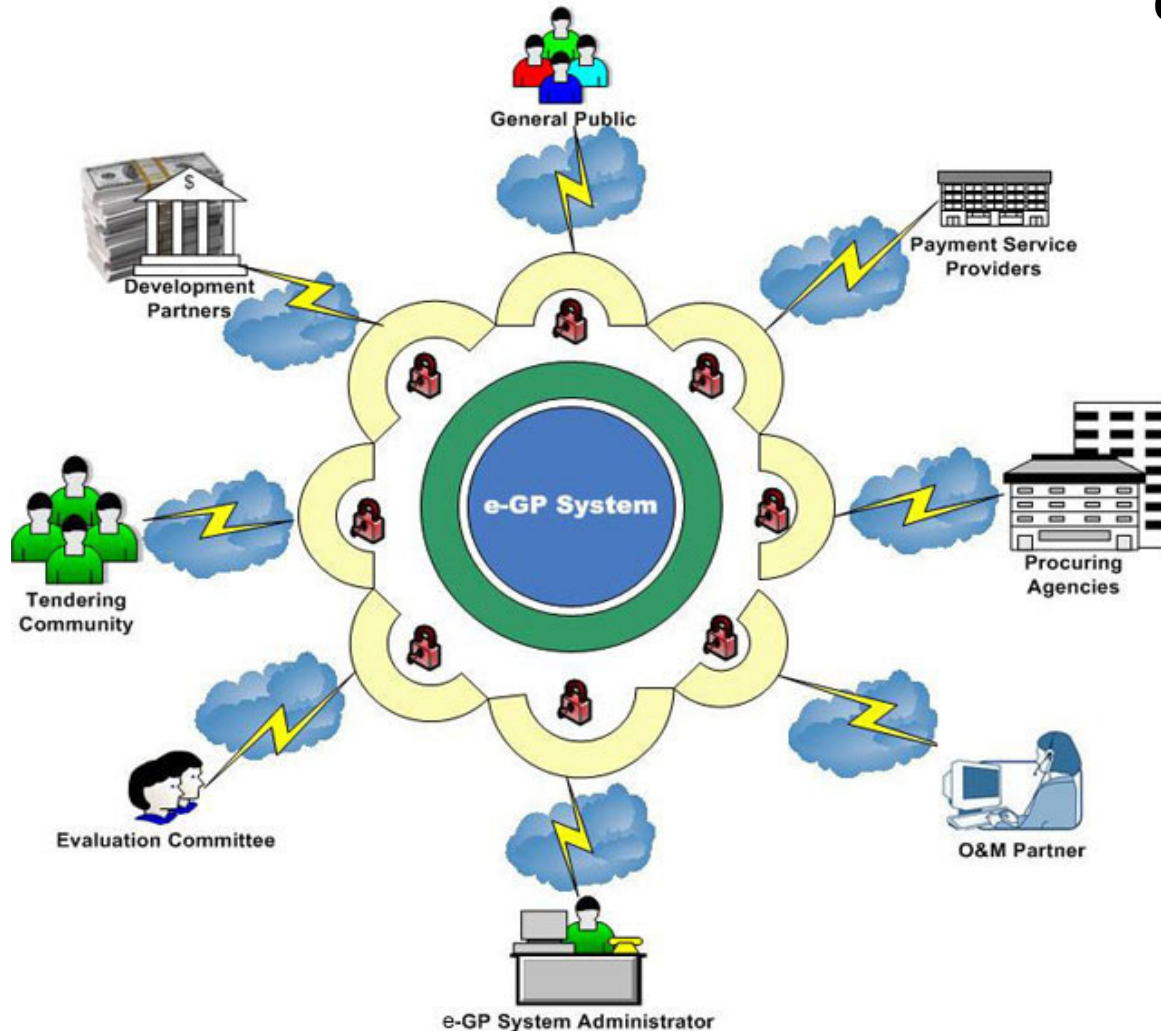


Under the National e-Governance Plan of India, the scheme of the **State Wide Area Network (SWAN)** across the country was approved in 2005.

SWAN is the converged backbone network for data, voice and video communications throughout a State connecting all State HQs up to the sub-district level in a vertical hierarchical structure through broadband connectivity.

Access – e-Government Network

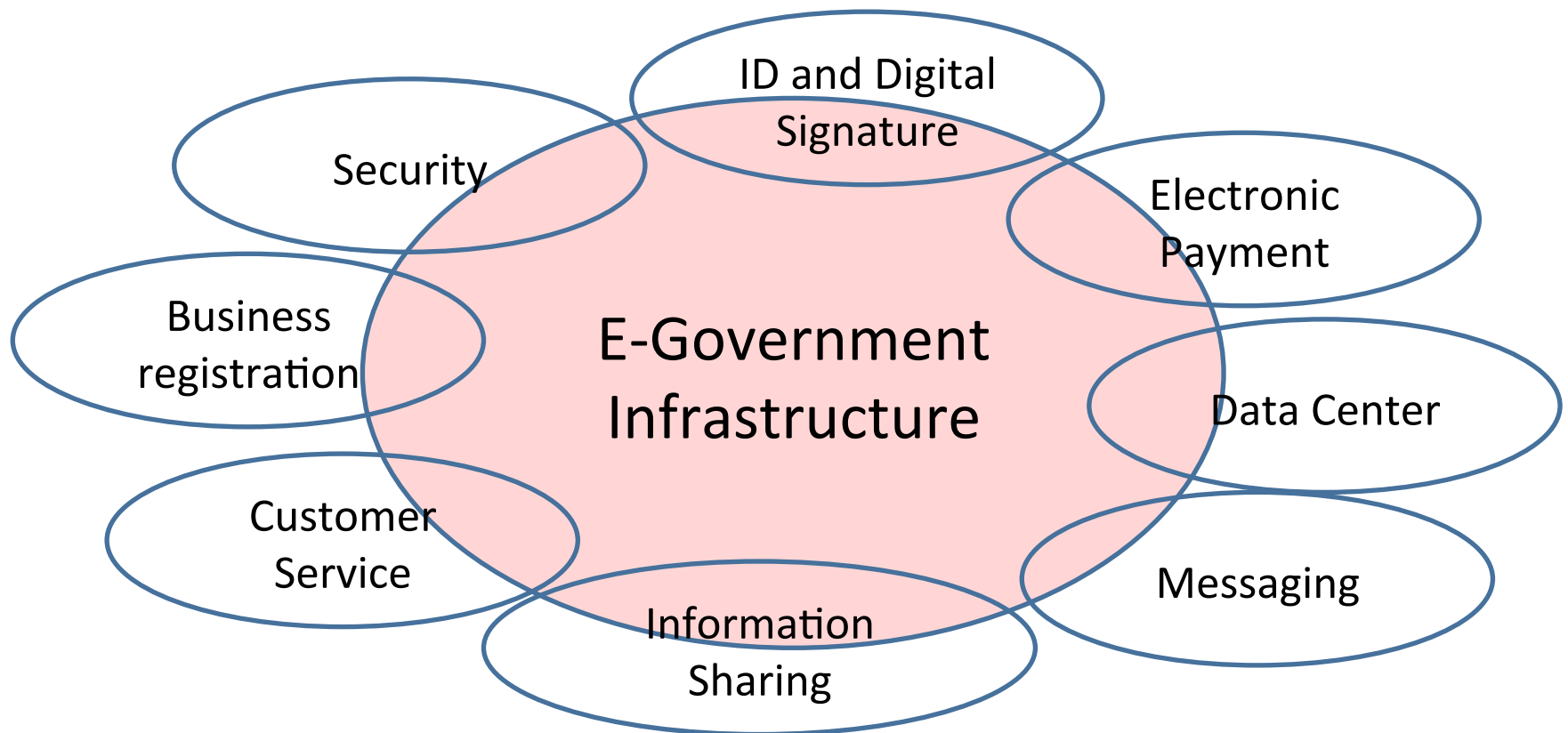
e-GP System Access Diagram



Central Procurement Technical Unit, Ministry of Planning in Bangladesh

The Government of Bangladesh has embarked on the public procurement reform project I (PPRP1) as part of strengthening overall sector governance establishing the Central Procurement Technical Unit (CPTU) in 2002. In 2007, the PPRP II started to progress the reform further introduction e-procurement.

Common Functions and Facilities



Integrated ICT Platform – Integrated Data Center

Established in 2005, the Government Integrated Data Center (GIDC) in Korea is in charge of the management of 1,312 units of equipment at 44 organizations as the center of Korea's e-government system



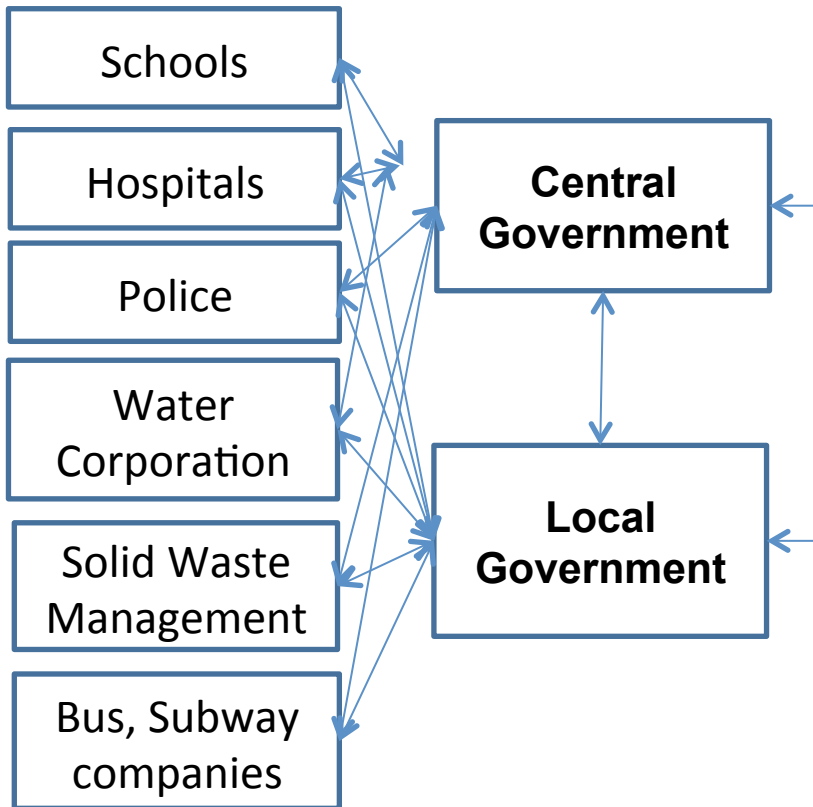
Cross Cutting Functions



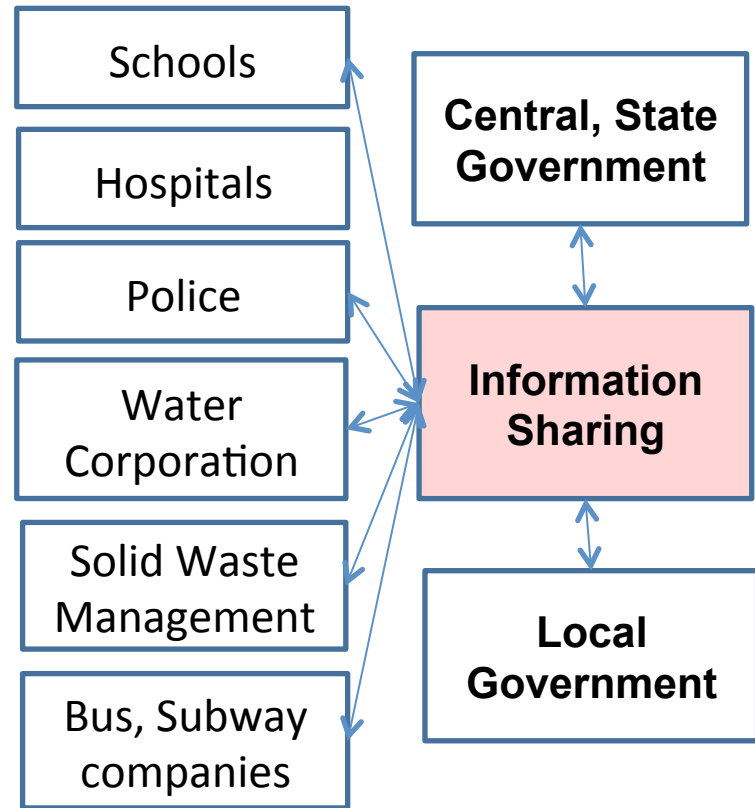
Work in Silos...

Integrated ICT Platform - Information Sharing and Exchange

Off Line

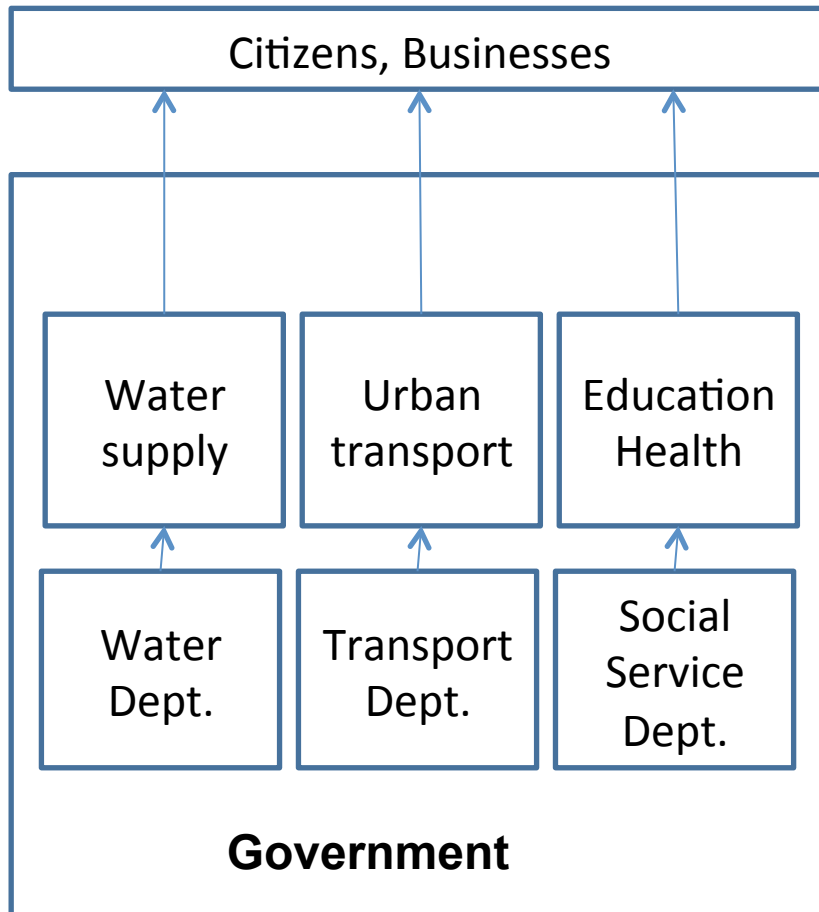


Online

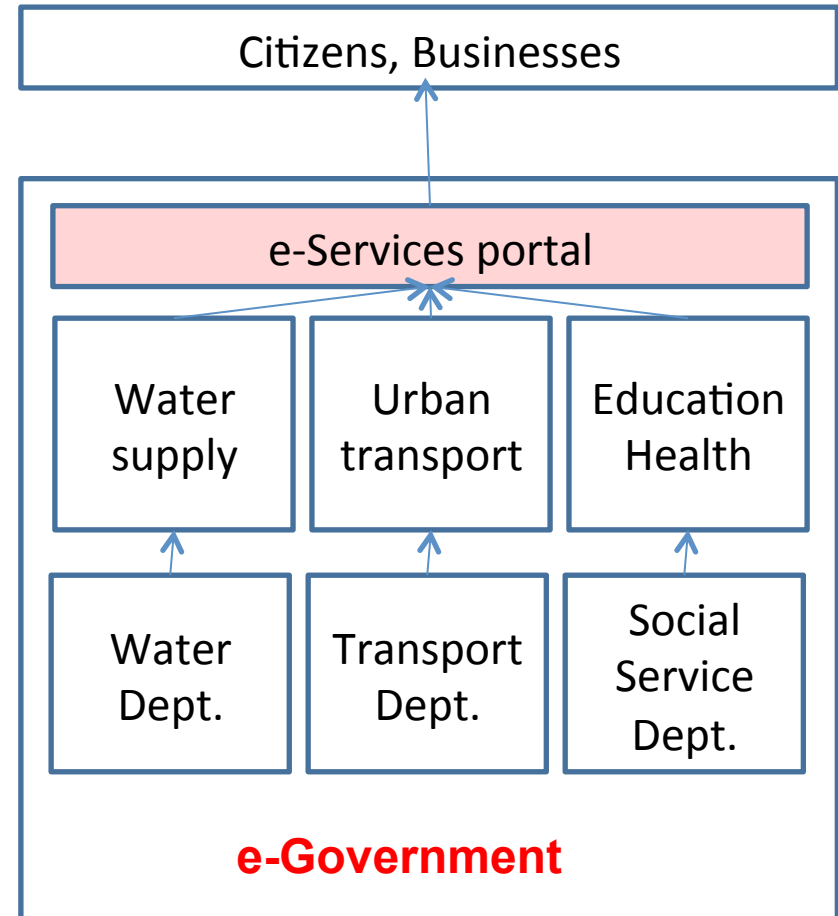


Government Portal

Off Line



Online



e-Government Evolution (Case in Korea)

Industrialization



1963~
1979

ICT infrastructure (network, database)

80's



1980~
1988

1988~
1993

- **5 Major National Network**
(**Administration**, **Education-research**, **Finance**, Military, Security)
- **Development of major national databases**
(**civil registration**, **business**, **land**, vehicle, employees, ex/import)

Institutional Preparation

90's



1993~
1997

- **Informatization Promotion Act.** (master plan, action plans, budget)
- **Establish Ministry of ICT**

e-Government Advancement

00's



1988~
2003

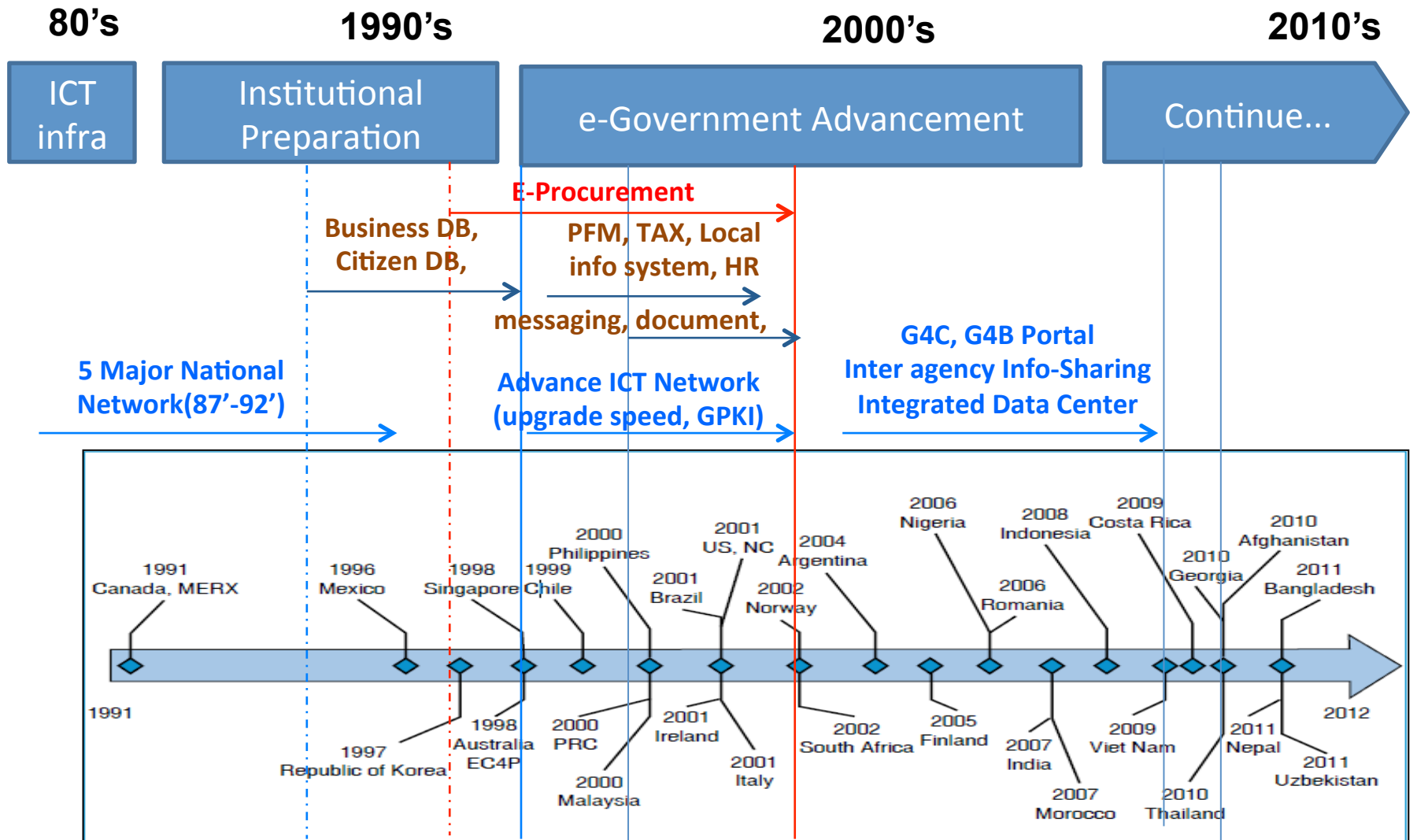
- **11 National e-Government Projects**
(social insurance, tax, **e-procurement**, **public finance**, education MIS)
- **Presidential Committee**
- **E-Gov't. Act.**



2003~
2008

- **31 e-Government Roadmap**
(advancement of 11 e-Gov't projects, local government informatization, Enterprise Architecture)

e-Procurement (Case in Korea)



Partnership in Actions

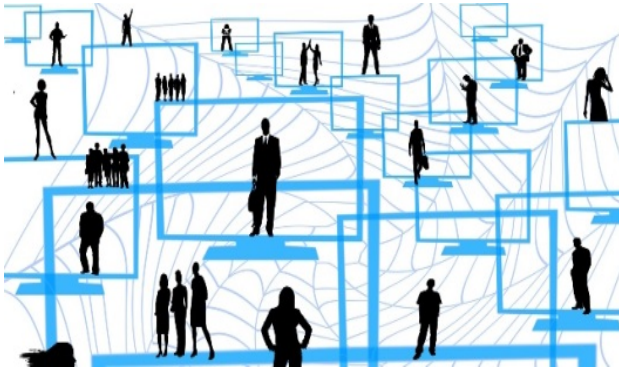
1. Direct Technical Assistance
2. Resource Mobilization through Partnership
3. Knowledge Sharing

Technical Assistance for Project Development



Advisory supports for investment and prioritization, and Pre-Feasibility Studies on e-GP projects: Proposals are reviewed and recommendations for funding are made on the basis of selection criteria. Selected projects are funded and executed in collaboration with multi-stakeholders.

Resource Mobilization through Partnership



Coordination and cooperation with partners and stakeholders: The APPeN provides a set of guidelines and toolkits for mobilizing resources and creating partnerships among various stakeholders and partners promoting e-GP in the Asia-Pacific region.

Knowledge Sharing for Capacity Development



Identify, compile, and disseminate good practices and lessons learned for addressing development issues on e-GP. The component will include awareness campaigns, capacity-building activities, conferences and workshops, publication of lessons learned, and integration of the knowledge gained

Thank You

Q & A