

Resilient Cities Connect

An initiative of the United Nations office for disaster risk reduction (UNISDR), the Japan Bosai Platform and the Government of the Netherlands.

Presentation by Mr. Nishiguchi,
Co-founder and President of Japan Bosai Platform
Co-founder and Executive Managing Director of the Japan Innovation
Network

This is not an ADB material. The views expressed in this document are the views of the author/s and/or their organizations and do not necessarily reflect the views or policies of the Asian Development Bank, or its Board of Governors, or the governments they represent. ADB does not guarantee the accuracy and/or completeness of the material's contents, and accepts no responsibility for any direct or indirect consequence of their use or reliance, whether wholly or partially. Please feel free to contact the authors directly should you have queries.

Inception

First developed through the Resilient Cities Acceleration initiative announced at UN Climate Summit in 2014.

Soft launch at the Third UN World Conference on Disaster Risk Reduction, in Sendai, 16 March 2015.



“It is clear that the risk in cities is growing faster than our ability to reduce them. We need to innovate and ensure that solutions, tools and methods for resilience building are not only available, but also accessible. We need to accelerate resilience building at the local level, and this partnership will contribute to do this.”
- Margareta Wahlström at the soft launch of the initiative in Sendai.

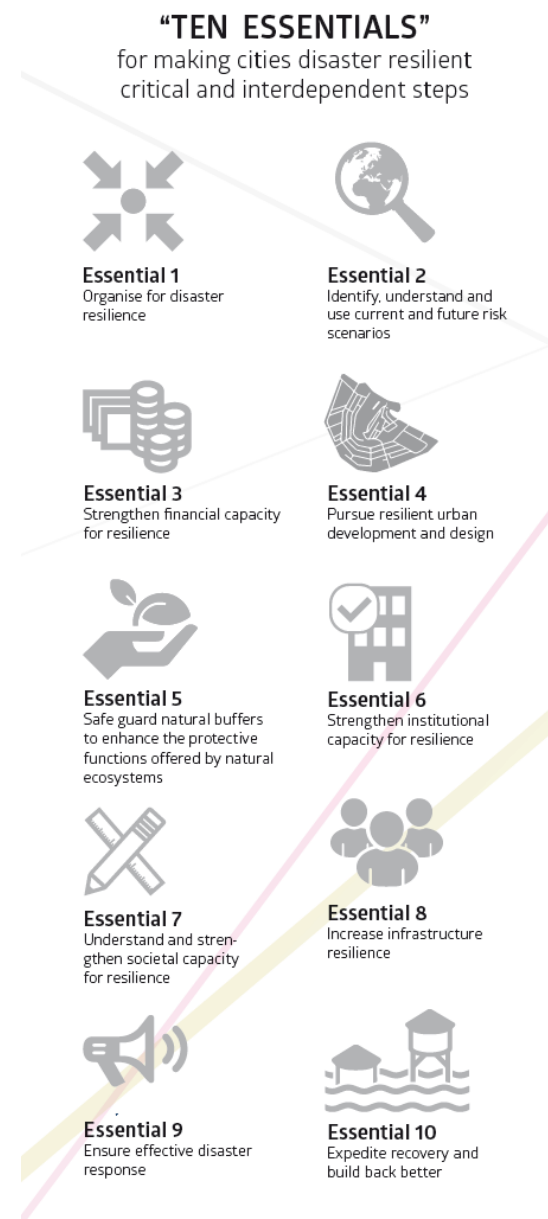
Goal

- *as a means to link suppliers of resilience building tools and services with the cities that need them.*
- *connecting cities with development partners and businesses to exchange their knowledge, services and capacities to accelerate urban disaster risk reduction.*
- *public and private partners to substantially reduce risk and disaster losses.*

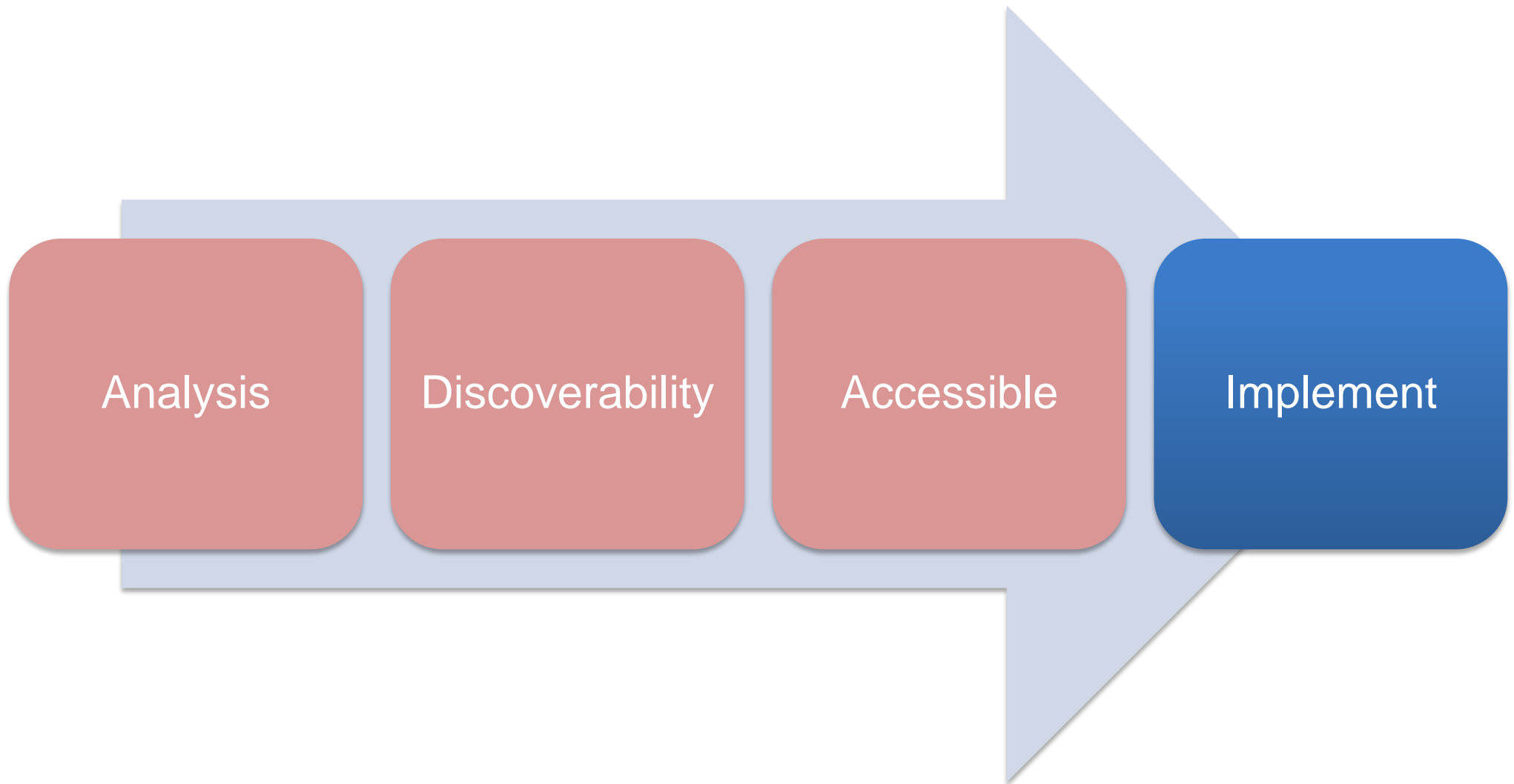
Resilient Cities Connect Video:
<https://youtu.be/sFd3TeFoF14>

Addressing the Ten Essentials

1. Organize for disaster resilience
2. Identify, understand and use current and future risk scenarios
3. Strengthen financial capacity for resilience
4. Pursue resilient urban development and design
5. Safeguard natural buffers to enhance the protective functions offered by natural ecosystems
6. Strengthen institutional capacity for resilience
7. Understand and strengthen societal capacity for resilience
8. Increase infrastructure resilience
9. Ensure effective disaster response
10. Expedite recovery and build back better



How



City Profiles

Progress in implementation

Hazard and or Risk Profile

Other data sets

Sound practices

Needs and challenges

Organization Profiles

Bilateral & multilateral

Private Sector

Science and Tech

UN

NGO's

Products and Services

Tools

Sound Practice

Policy Guidance

Funding and Coverage

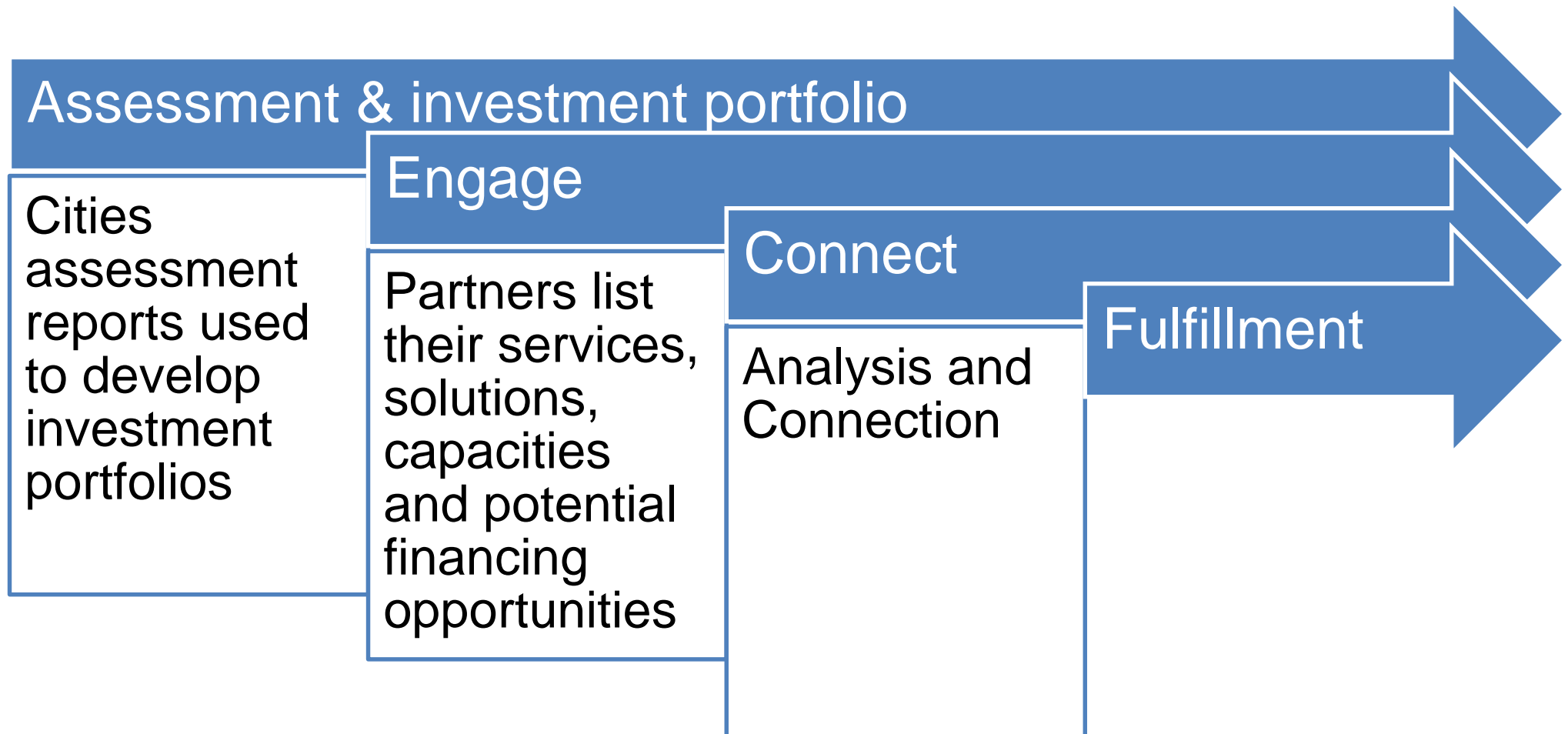
Modalities for support

Technical Support

Resilient Cities Marketplace

Exchange || Analysis || Discovery || Connection || Partnership

Discover-Connect-Implement

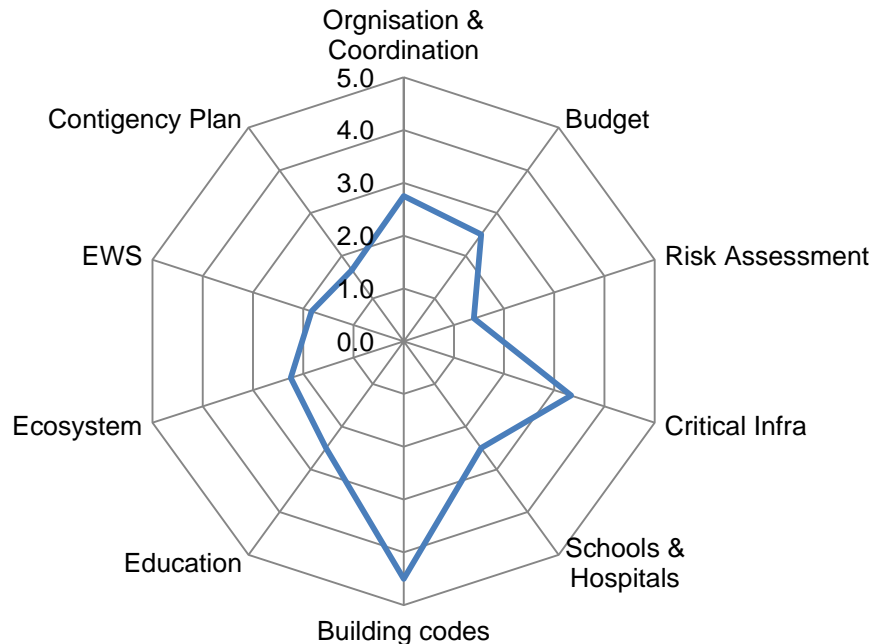


Service lines



Demand and Supply, an example with Nepal

Kathmandu - Assessment



- *Capacity ratings according to the Ten Essentials for making cities resilient.*
- *Assessment ratings identify where the city's most vital needs are.*
- *In Kathmandu's case, it is most in need of building capacity in Risk Assessments, Early Warning Systems and Contingency Plans.*
- *Therefore investment portfolios are to be developed upon this information.*

Demand and Supply, an example with Nepal

Demand/Need

In this case Kathmandu's demand is in building capacity within Risk Assessments, Early Warning Systems and Contingency Plans

Discover

From having such needs identified, Kathmandu will be alerted by the platform as to what cities, development partners and private sector are providing experience, knowledge, services, tools and finance opportunities in regards to these areas of expertise.

Engage

Kathmandu can then engage at will with the listed partners upon the services they can offer to provide possible solutions. This is a prospecting stage before deciding which is best to go forward with in terms of how effective and efficient a solution will be for the specific needs.

Connect

Kathmandu goes about formalising a collaboration with one or more partners to provide solutions to their specific needs.

Fulfilment and implementation

This is the supply aspect where a solution in demand is officially supplied by one or more partners of the Resilient Cities Connect platform. Agreed partnership collaborations consisting of resilience building actions and investment plans are initiated.

Partner with us

By reaching us at isdr@un.org

Thank you.