



广州市现代快速公交
和可持续交通研究所

Institute for Transportation
& Development Policy

Karl Fjellstrom, Regional Director
East & Southeast Asia, ITDP
19 May 2015

This is not an ADB material. The views expressed in this document are the views of the author/s and/or their organizations and do not necessarily reflect the views or policies of the Asian Development Bank, or its Board of Governors, or the governments they represent. ADB does not guarantee the accuracy and/or completeness of the material's contents, and accepts no responsibility for any direct or indirect consequence of their use or reliance, whether wholly or partially. Please feel free to contact the authors directly should you have queries.

Bus Rapid Transit (BRT)















培训

85260131

招商银行

24小时营业

KFC

肯德基

格电子城

1822159966

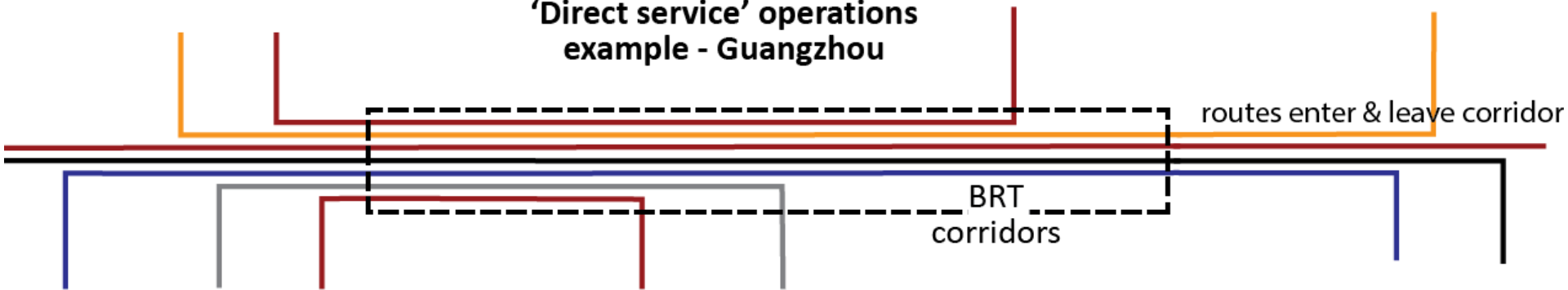
1302516838

文源城市

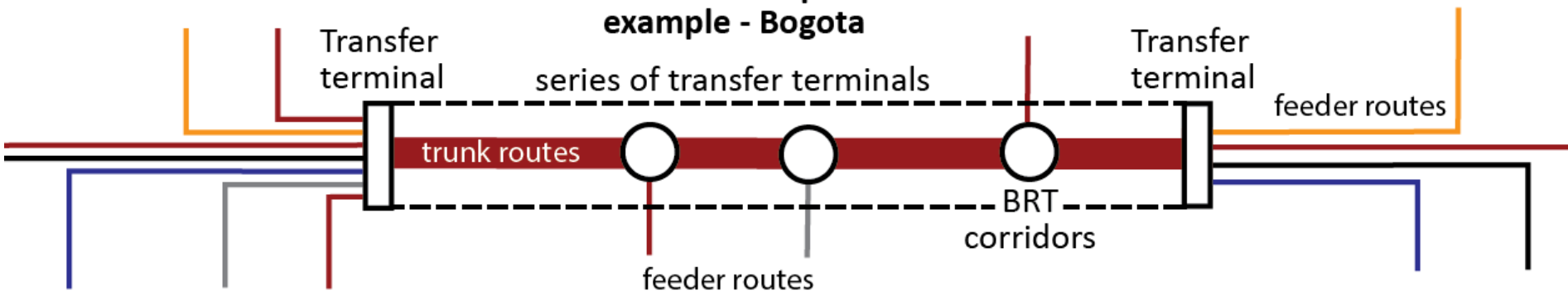




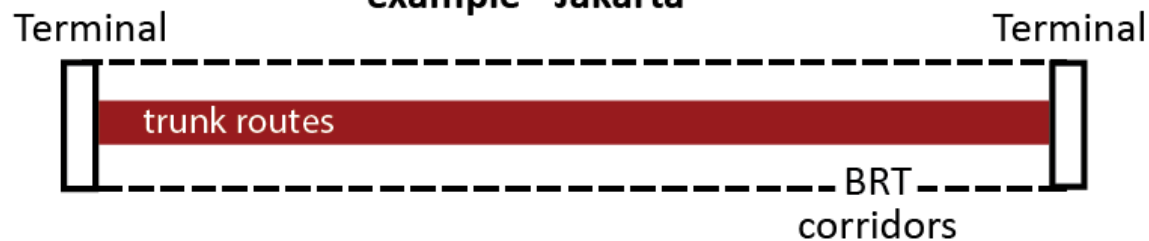
**'Direct service' operations
example - Guangzhou**

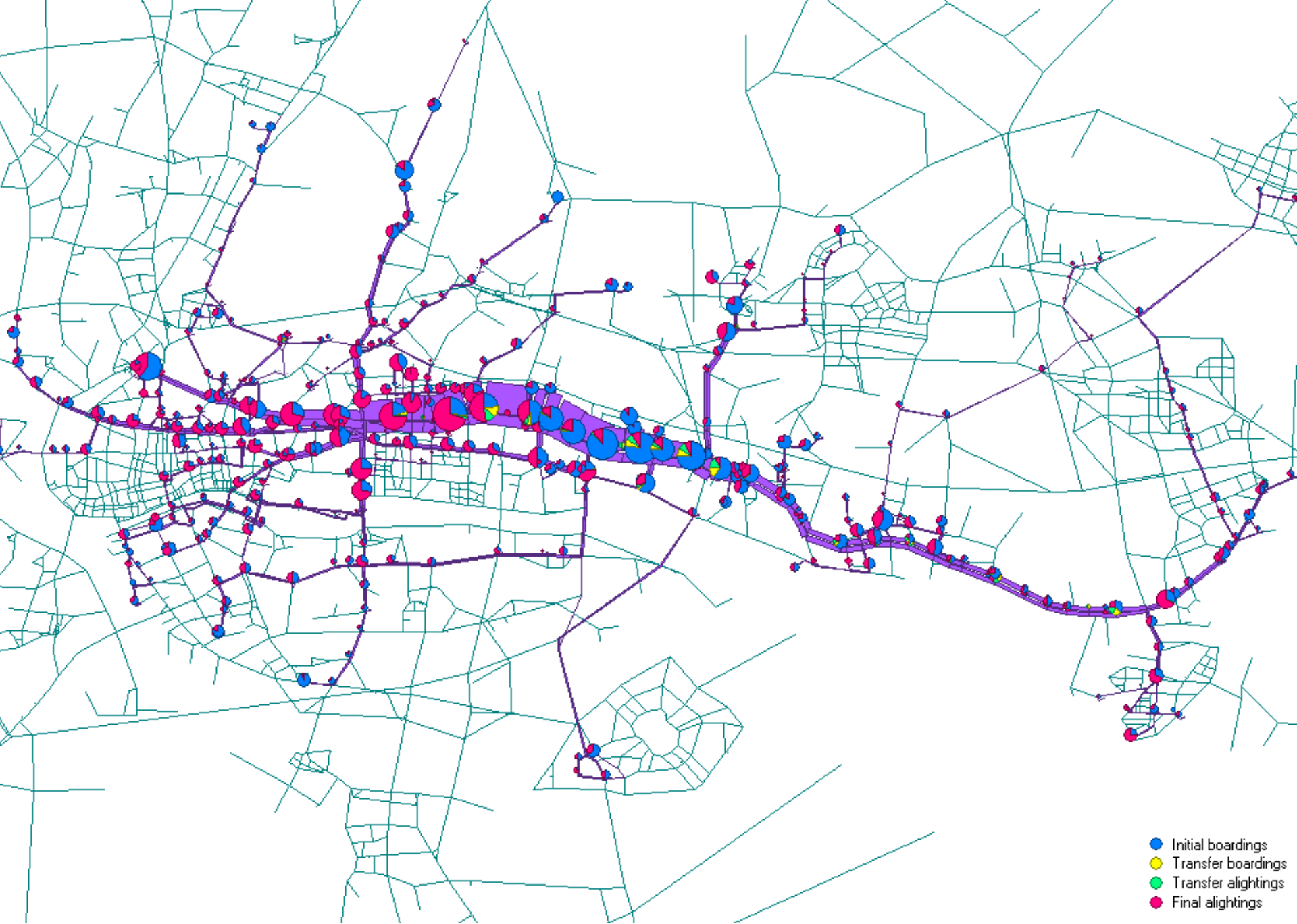


**'Trunk & feeder' operations
example - Bogota**

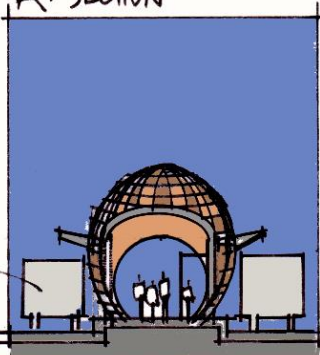


**'Trunk only' operations
example - Jakarta**

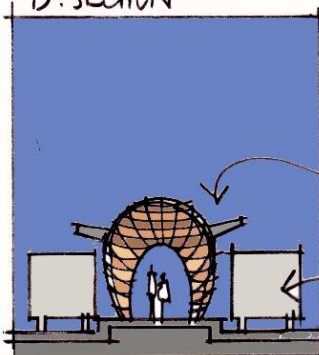




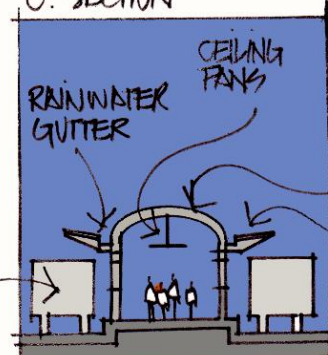
A. SECTION



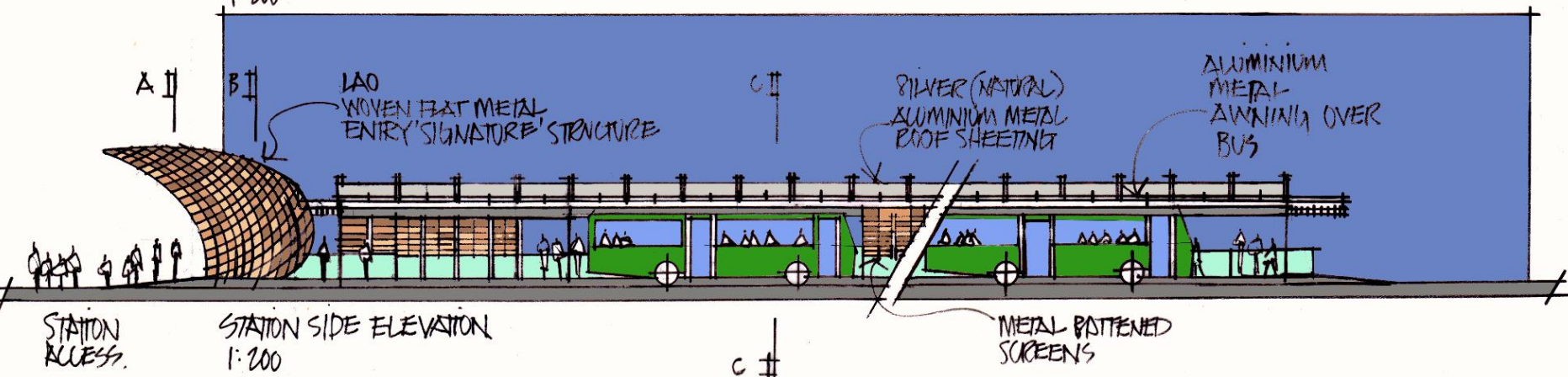
B. SECTION



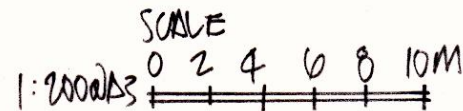
C. SECTION

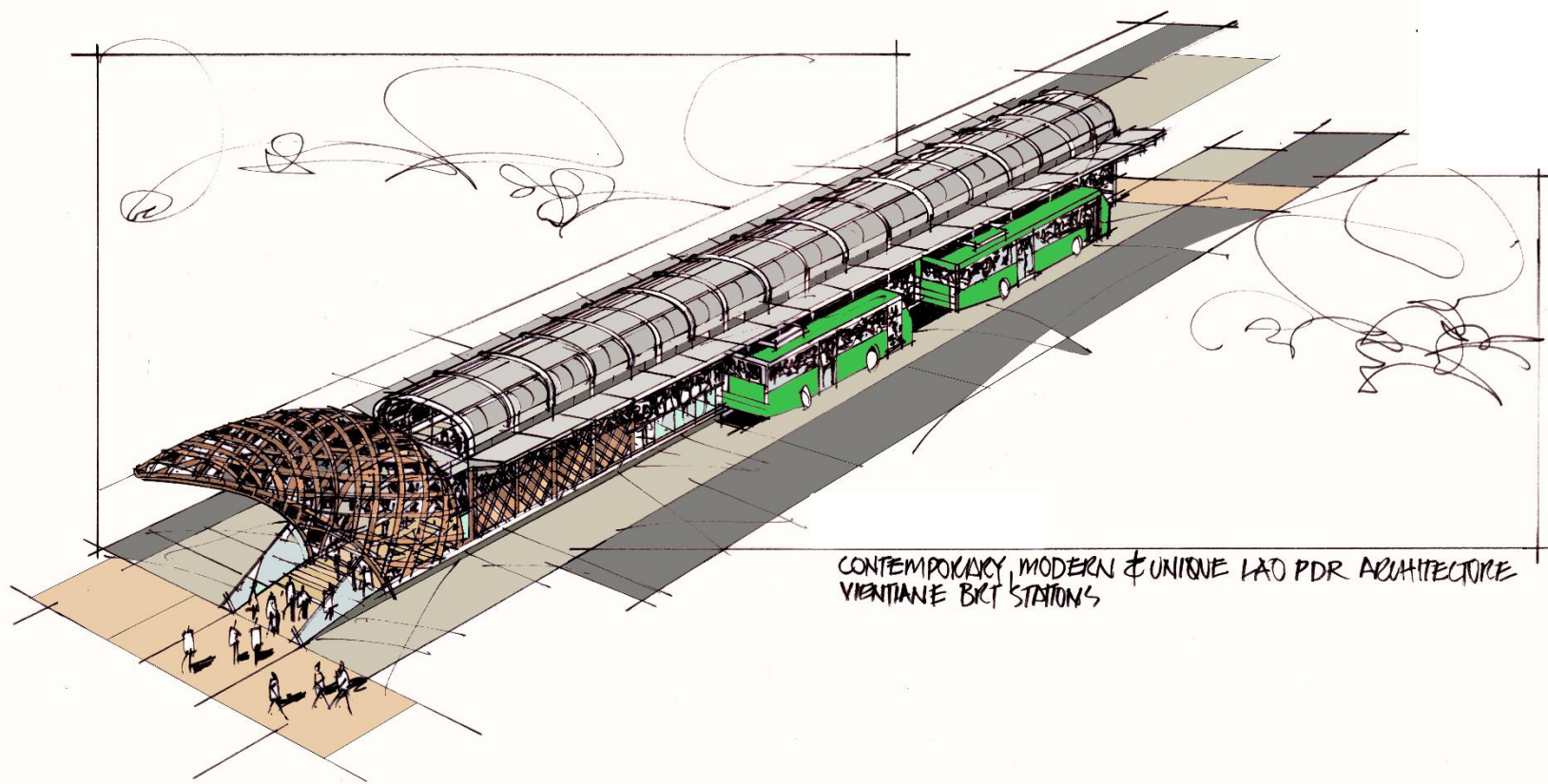


STATION ENTRY ELEVATIONS
1:200



STATION SIDE ELEVATION
1:200





CONTEMPORARY, MODERN & UNIQUE LAO PDR ARCHITECTURE
VIENTIANE BRT STATIONS



Sliding Door Alignment



Talat Sao Mall
(Before)



Talat Sao Mall
(After)



Wat Mixay
(Before)



Wat Mixay
(After)

Talat Sao
(Before)



Talat Sao (After)





VTE High School
(Before)



VTE High School
(After)

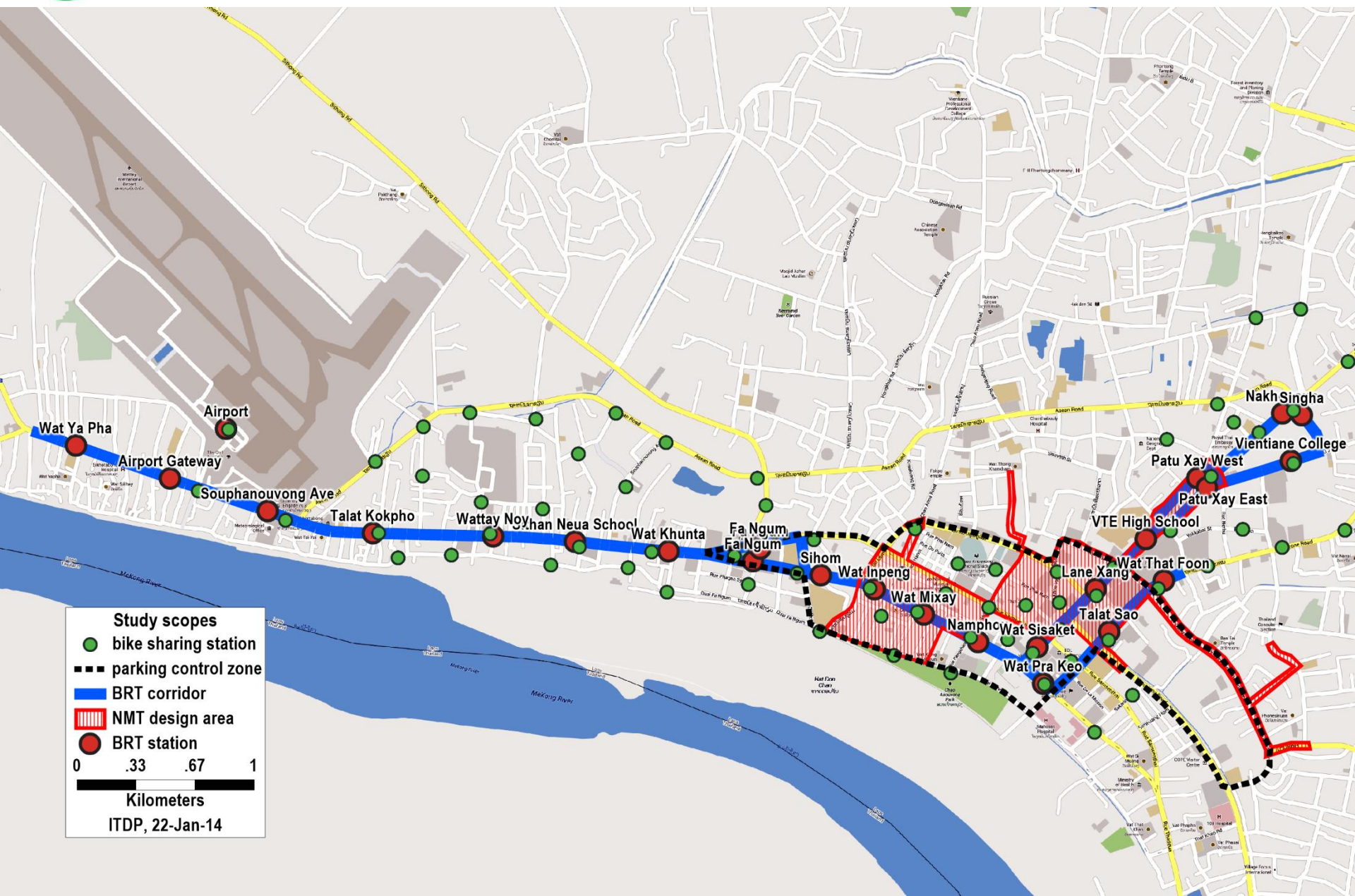


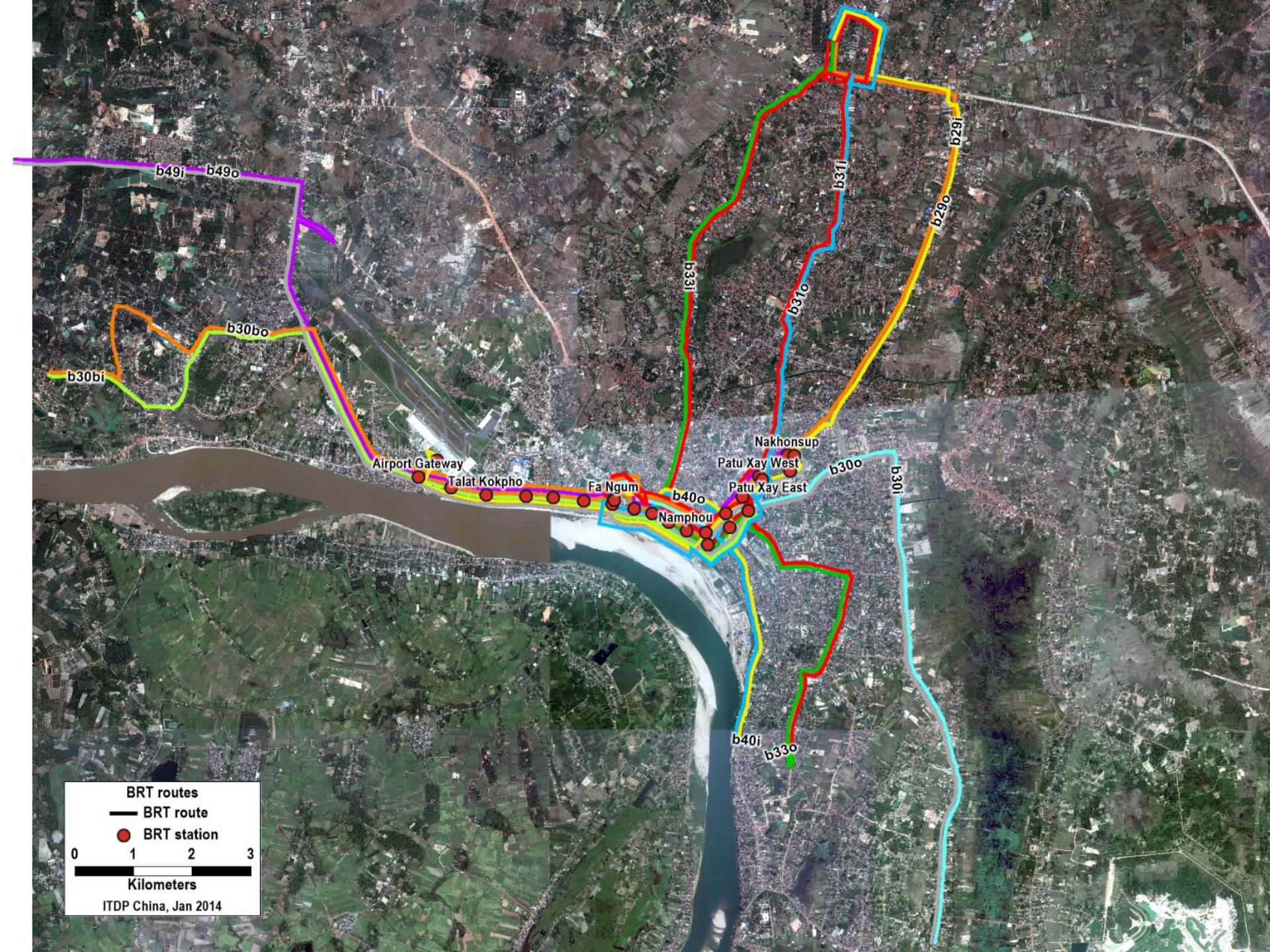
Ulaanbaatar BRT Preliminary Conceptual Plan

30 June 2011









BRT routes

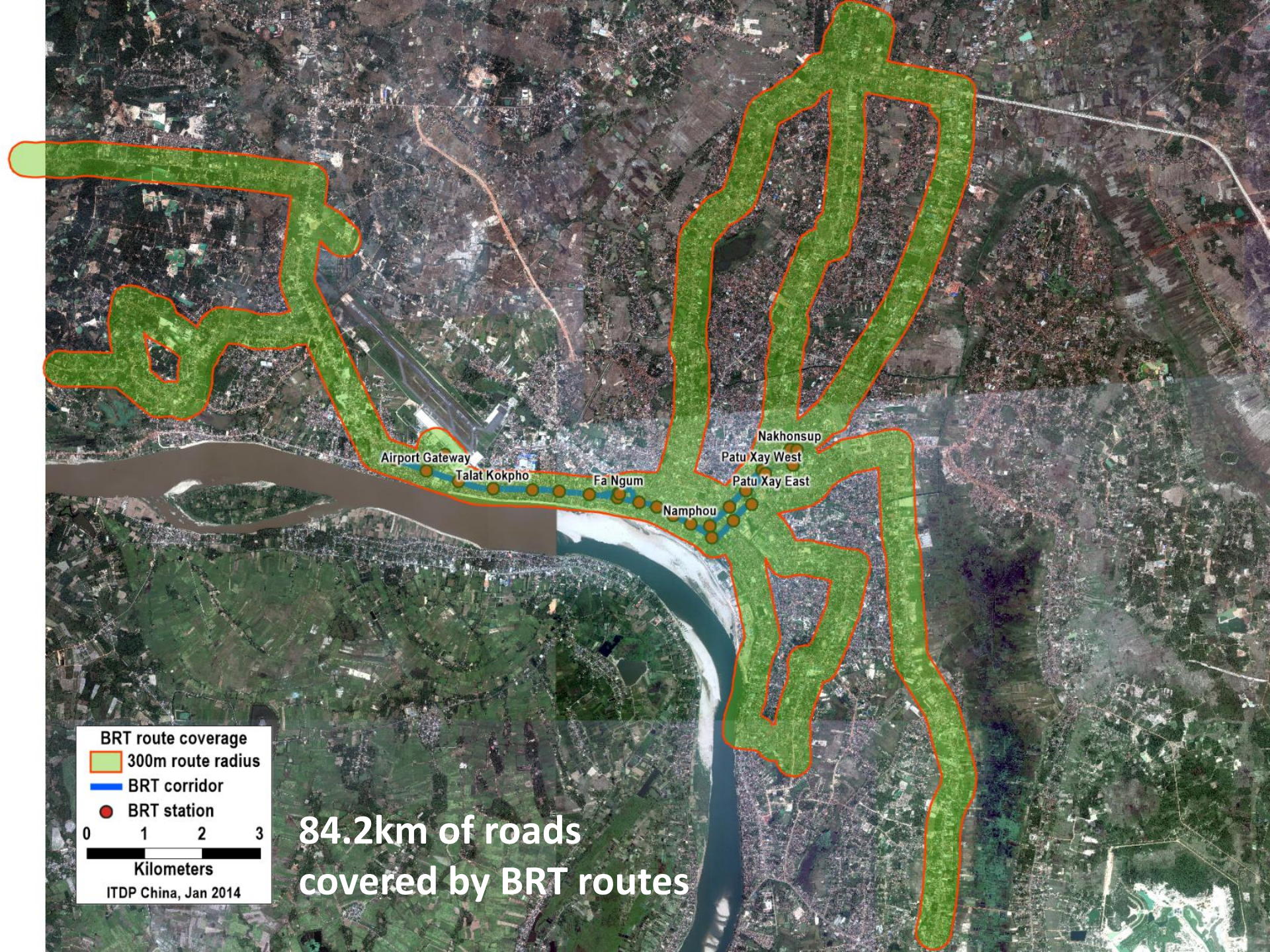
— BRT route

● BRT station

0 1 2 3

Kilometers

ITDP China, Jan 2014



BRT route coverage

300m route radius

BRT corridor

BRT station

0 1 2 3

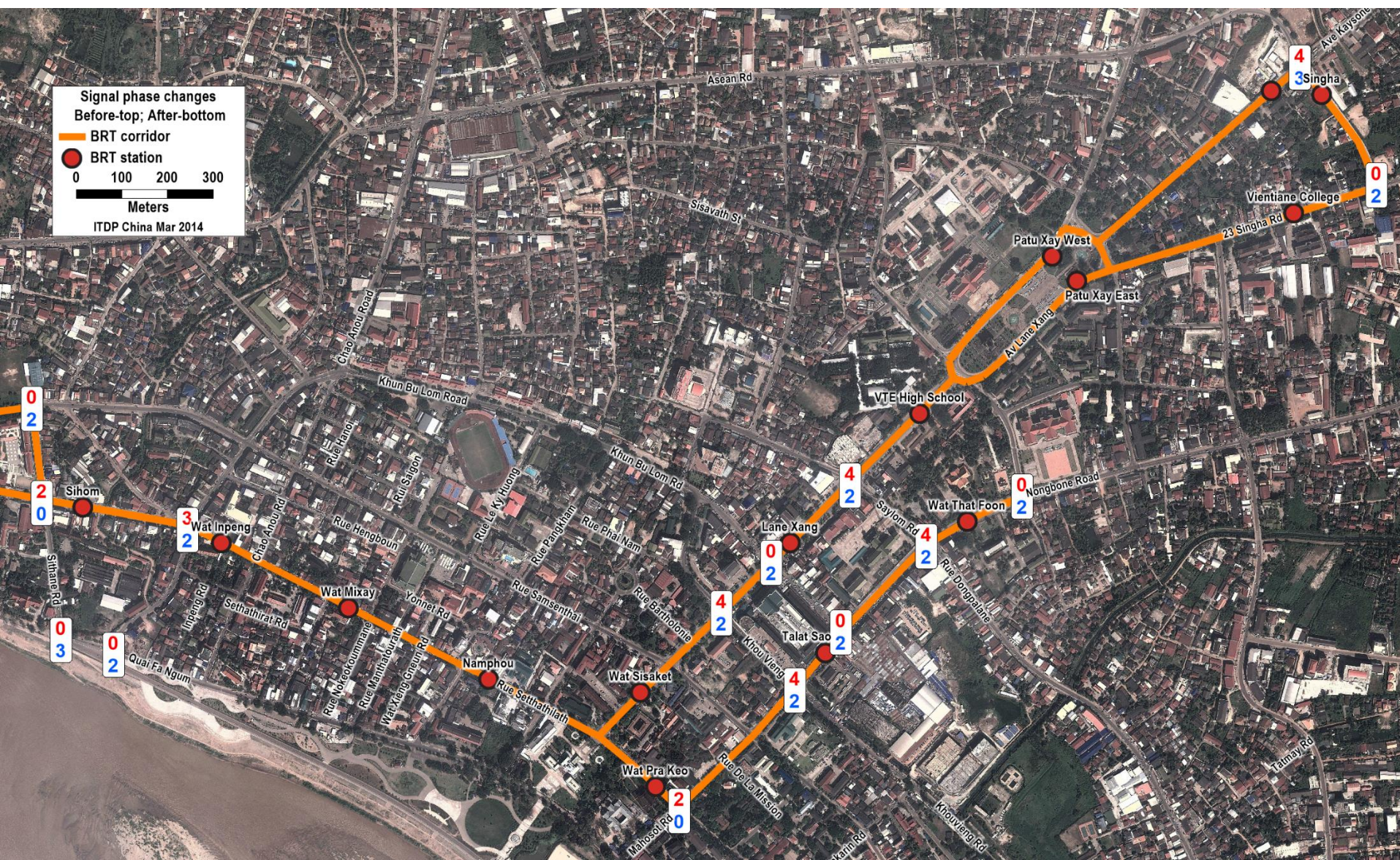
Kilometers

ITDP China, Jan 2014

84.2km of roads
covered by BRT routes

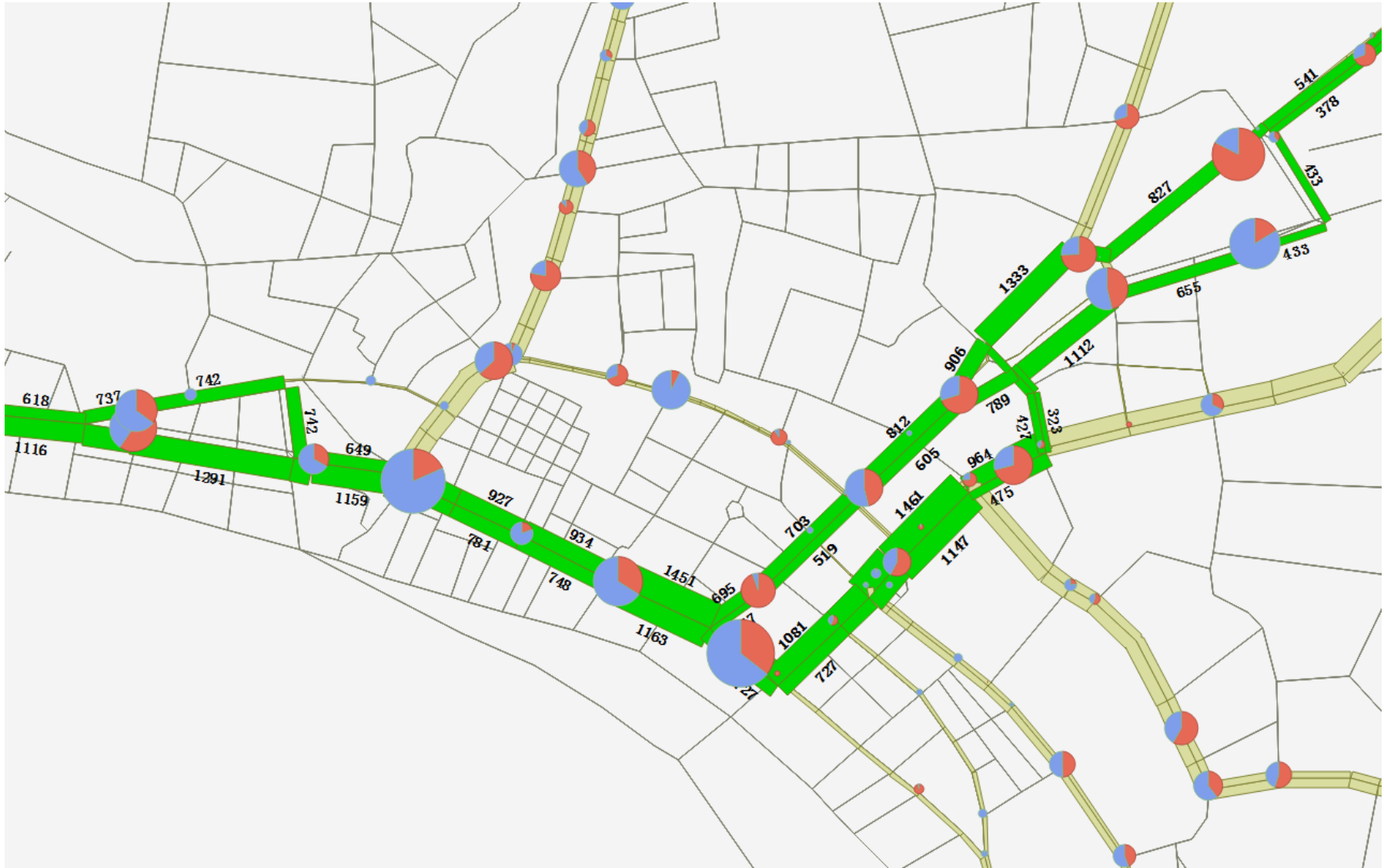


Intersection phase changes



Assignment Results with Lane Xang

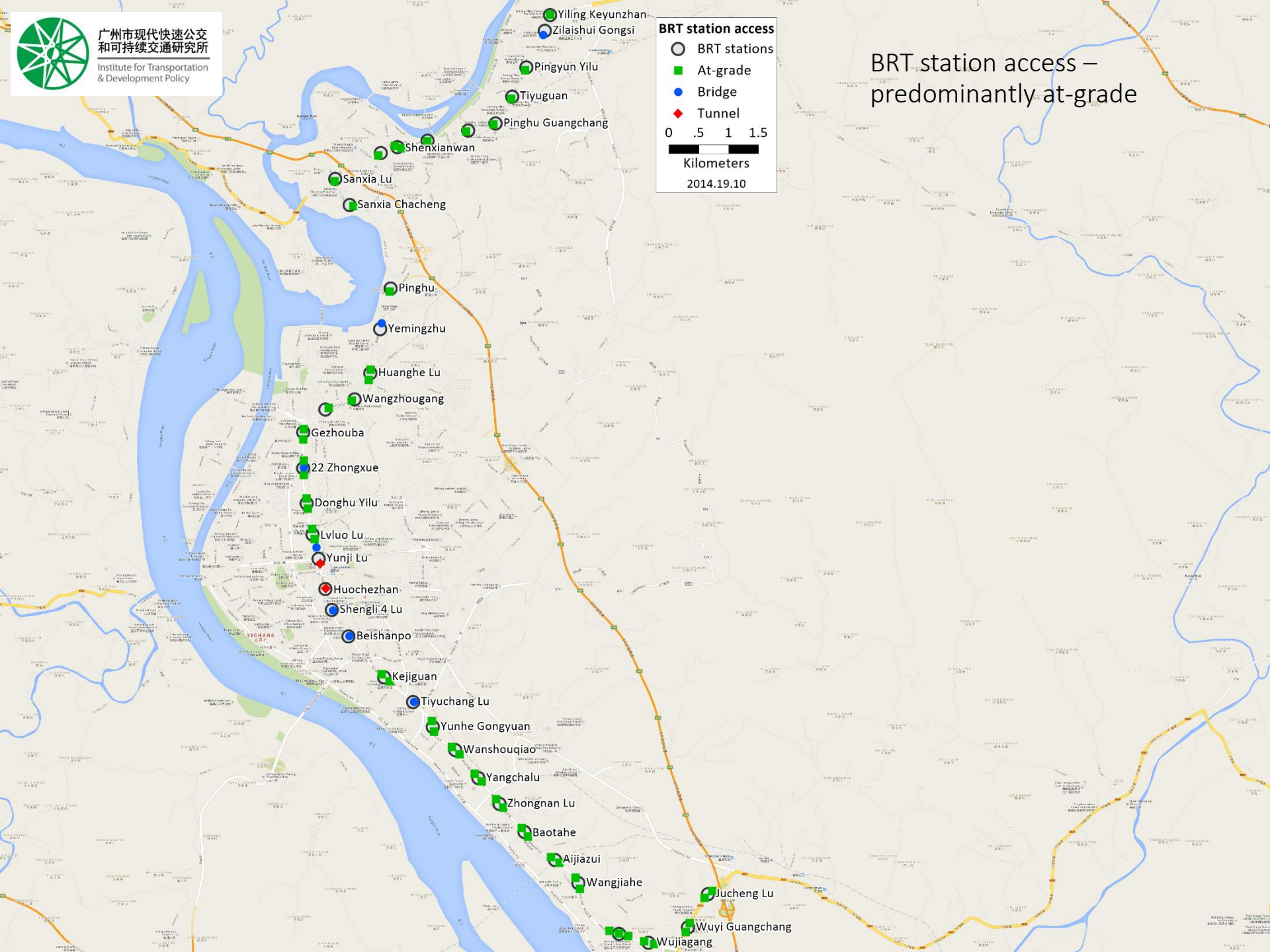
– Passengers Load & Boarding/Alighting





广州市现代快速公交
和可持续交通研究所

Institute for Transportation
& Development Policy



BRT station access

- BRT stations
- At-grade
- Bridge
- ◆ Tunnel

0 .5 1 1.5

Kilometers

2014.19.10

BRT station access –
predominantly at-grade



广州市现代快速公交
和可持续交通研究所

Institute for Transportation
& Development Policy





该厂位于城东大港
路，毗邻运河，佔地182亩，总建
筑面积5万，经营品种
以羽绒为主。该厂由
于2014年2月开
业开始全面交付使

1. 部基地
部基地位于酒
店，占地约1亩，建
筑面积1500
平方米。总投资150
万元。1-2号楼建
筑群已经开工。该
基地将作为部基
地。

1998年12月15日

宜昌新区

BRT快速公交线路及站点分布图



项目简介

宜昌BRT快速公交线路北起夷陵区客运站,沿夷兴大道—三峡路—夜明珠路—东山大道—桔城路,南至火车站。线路全长约23.9公里,总投资12.97亿元。全线拟设置BRT专用车站38对,平均站距620米。线路贯穿宜昌市夷陵区、西陵区和伍家岗区三大城区,是城区现阶段客流量最为集中的客运线路。

一期东山大道BRT工程全长11.6公里,北起蜀州坝转盘,南至宜昌火车东站。项目建设内容包括道路改造工程、BRT车道及站台工程、绿化景观工程、自行车停放点工程、运营系统的建设及营运设备的购置等。项目于2014年元月开工,计划2015年建成通车。

北京地区网络出版单位: <http://www.fjwz.com/>

东山大道四十一图片展示



◆东山大道BRT效果图



◆东山大道BRT效果图



◆东山大道BRT原貌图

[illegible]

●在山中溪谷中散步



◆在山中道中

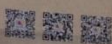
YI CHANG NEW DISTRICT 宜昌新区
宜昌梦 新起航 YI CHANG DREAM NEW SAIL

宜昌新区

宜昌梦 新起航

...DREAM NEW SAIL

宜昌林区建设领导小组办公室 <http://www.hbysq.com/>





广州市现代快速公交
和可持续交通研究所

Institute for Transportation
& Development Policy

临BRT 交通畅

老城中心绝佳地段 BRT就在家门口 全城一站直达

玫瑰之约
0717-

* 6677 888 6688 9

* 开发商: 宜昌正泰地产 * 网址: www.zimgy.com * 整合推广

城市交通生活8原则

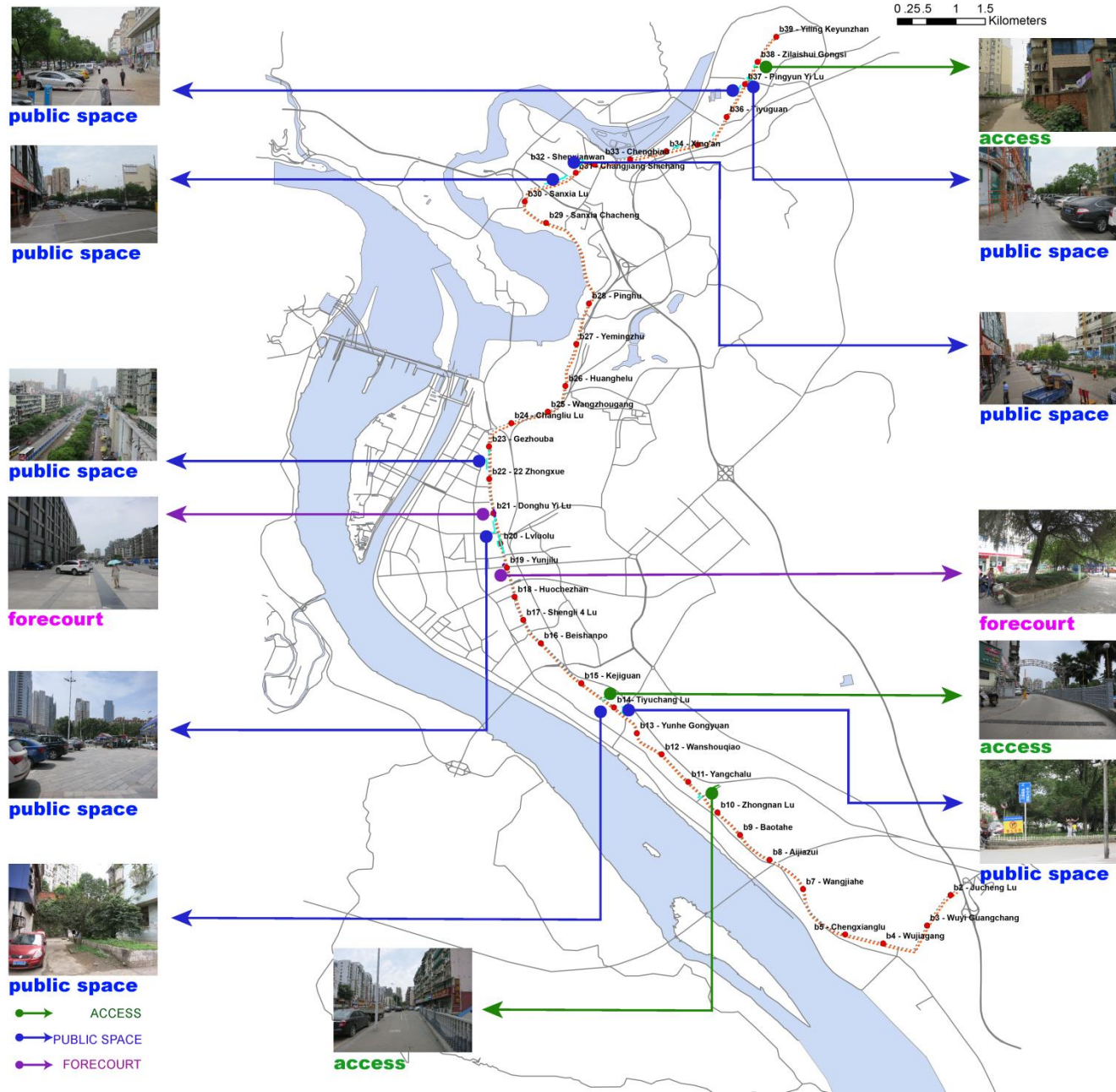
8 Principles



通过规范停车和交通使用来增加城市的机动性
Increase mobility by regulating parking and road use.



宜昌BRT走廊车站周边改善





广州市现代快速公交
和可持续交通研究所

Institute for Transportation
& Development Policy





Pingyun Yilu BRT station area development







广州市现代快速公交
和可持续交通研究所

Institute for Transportation
& Development Policy



国贸商场后退区现状



建议

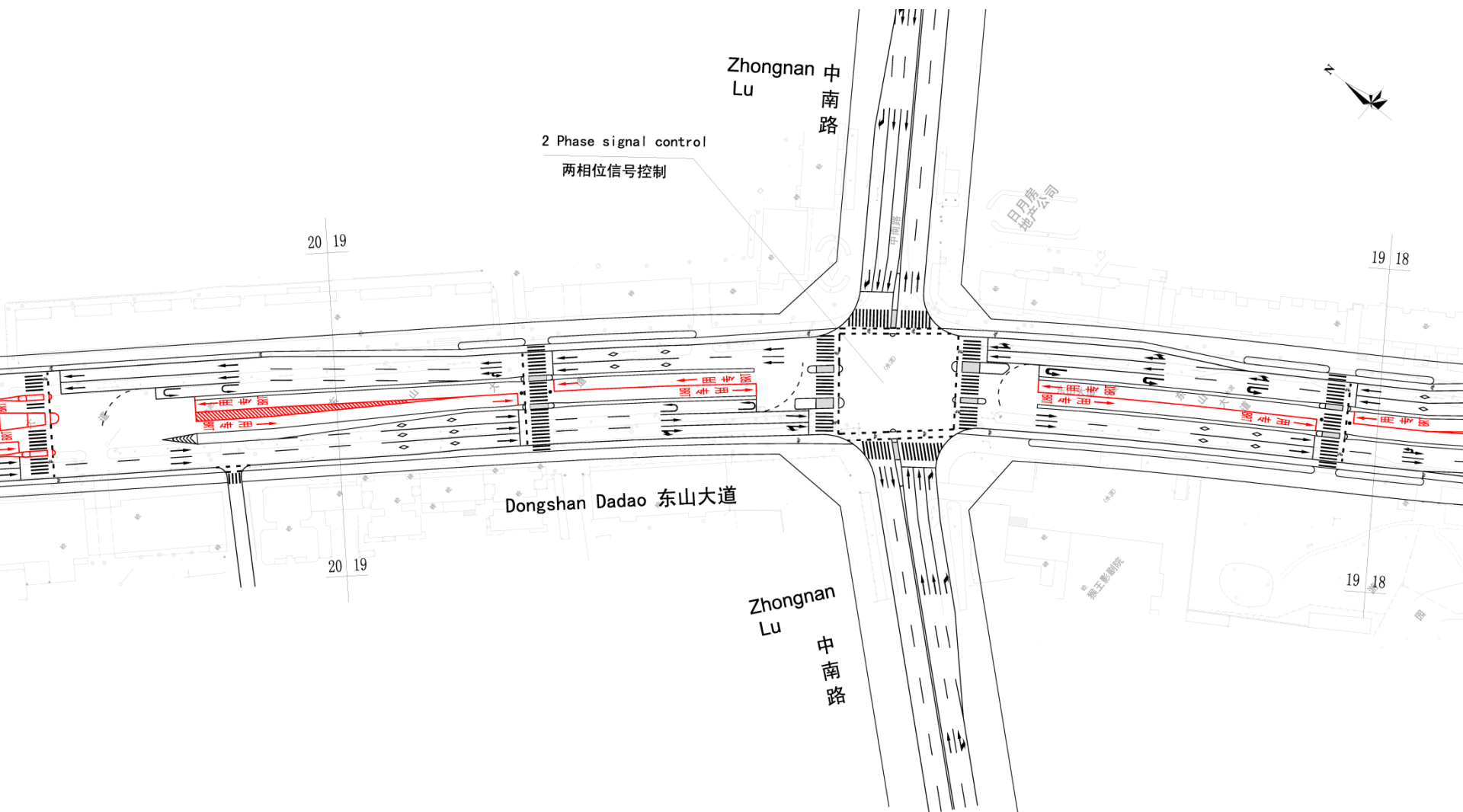




广州市现代快速公交
和可持续交通研究所

Institute for Transportation
& Development Policy









博爱医院
男科品牌

男科
博爱

城







中国移动
China Mobile

移动 4G 和你来真的

你换移动 4G 了吗? 流量1M不到1分钱

4G LTE

交通银行
BANK OF COMMUNICATIONS

宜昌华氏品牌策划有限公司
400020520 7833166

全民健身中心











