

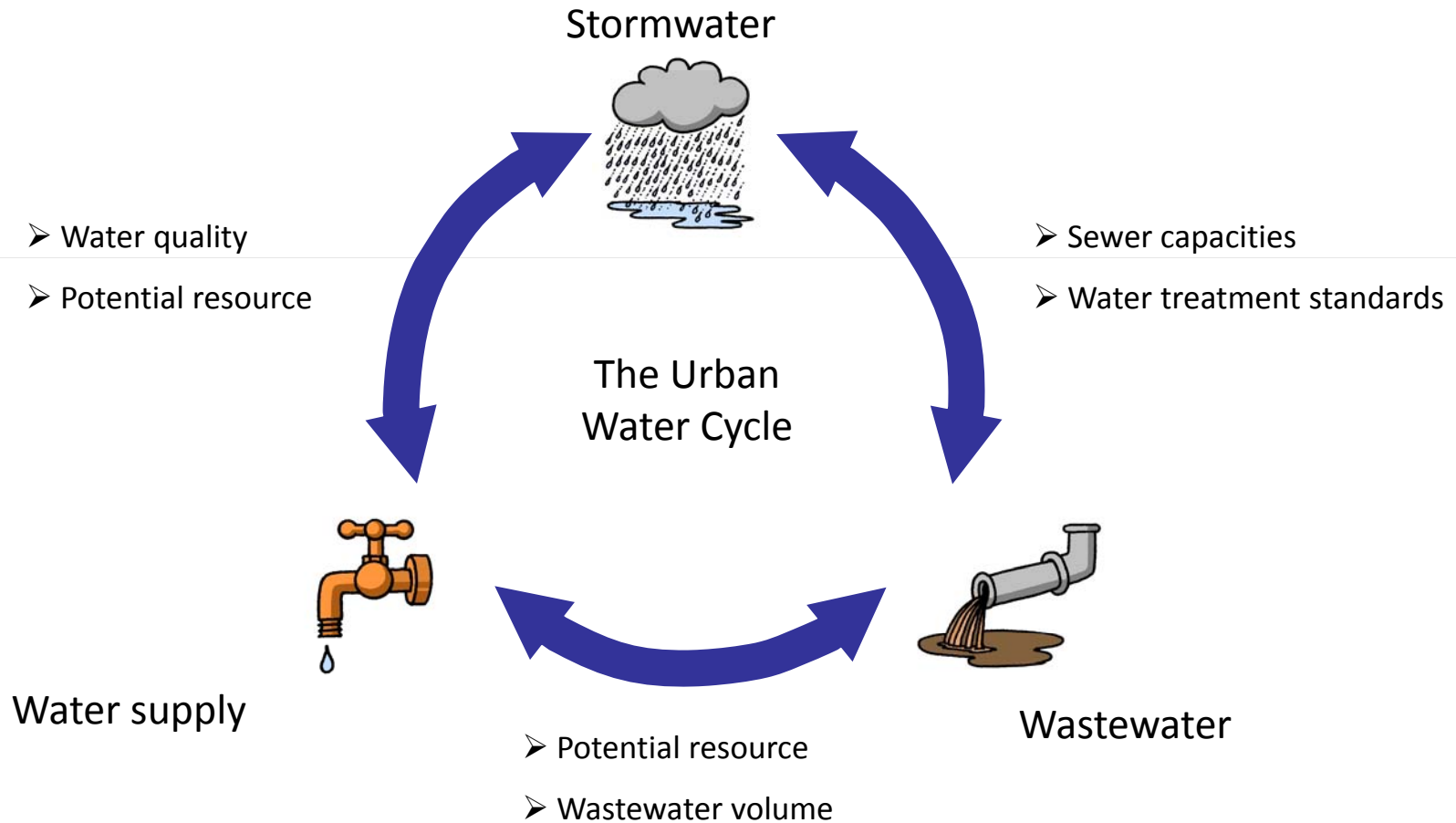


Future of Water in Asian Cities – The Approach of Integrated Urban Water Management Involving all the players

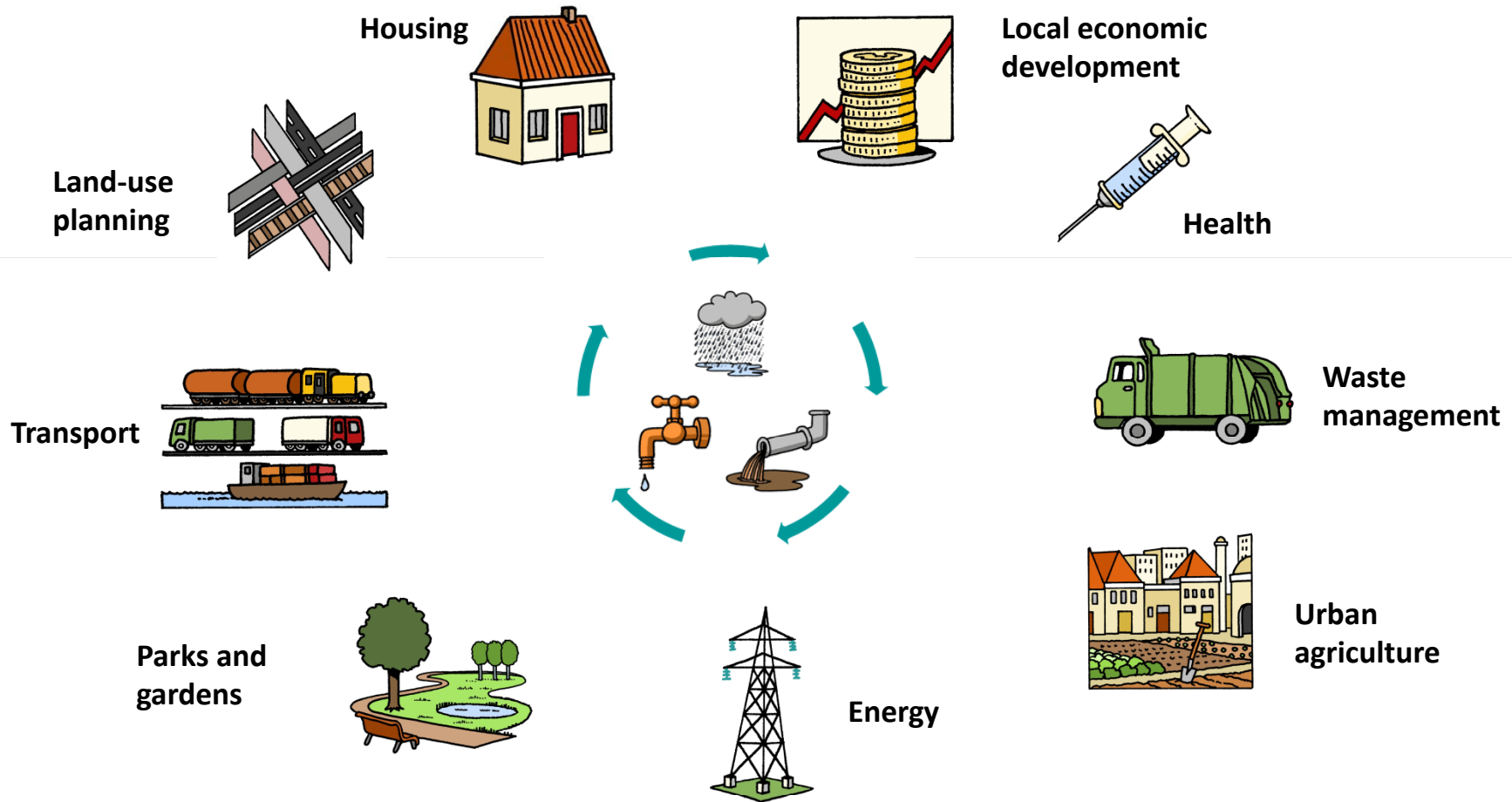
Ralph Philip, ICLEI – Local Governments for Sustainability

This is not an ADB material. The views expressed in this document are the views of the author/s and/or their organizations and do not necessarily reflect the views or policies of the Asian Development Bank, or its Board of Governors, or the governments they represent. ADB does not guarantee the accuracy and/or completeness of the material's contents, and accepts no responsibility for any direct or indirect consequence of their use or reliance, whether wholly or partially. Please feel free to contact the authors directly should you have queries.

Linkages within the urban water cycle



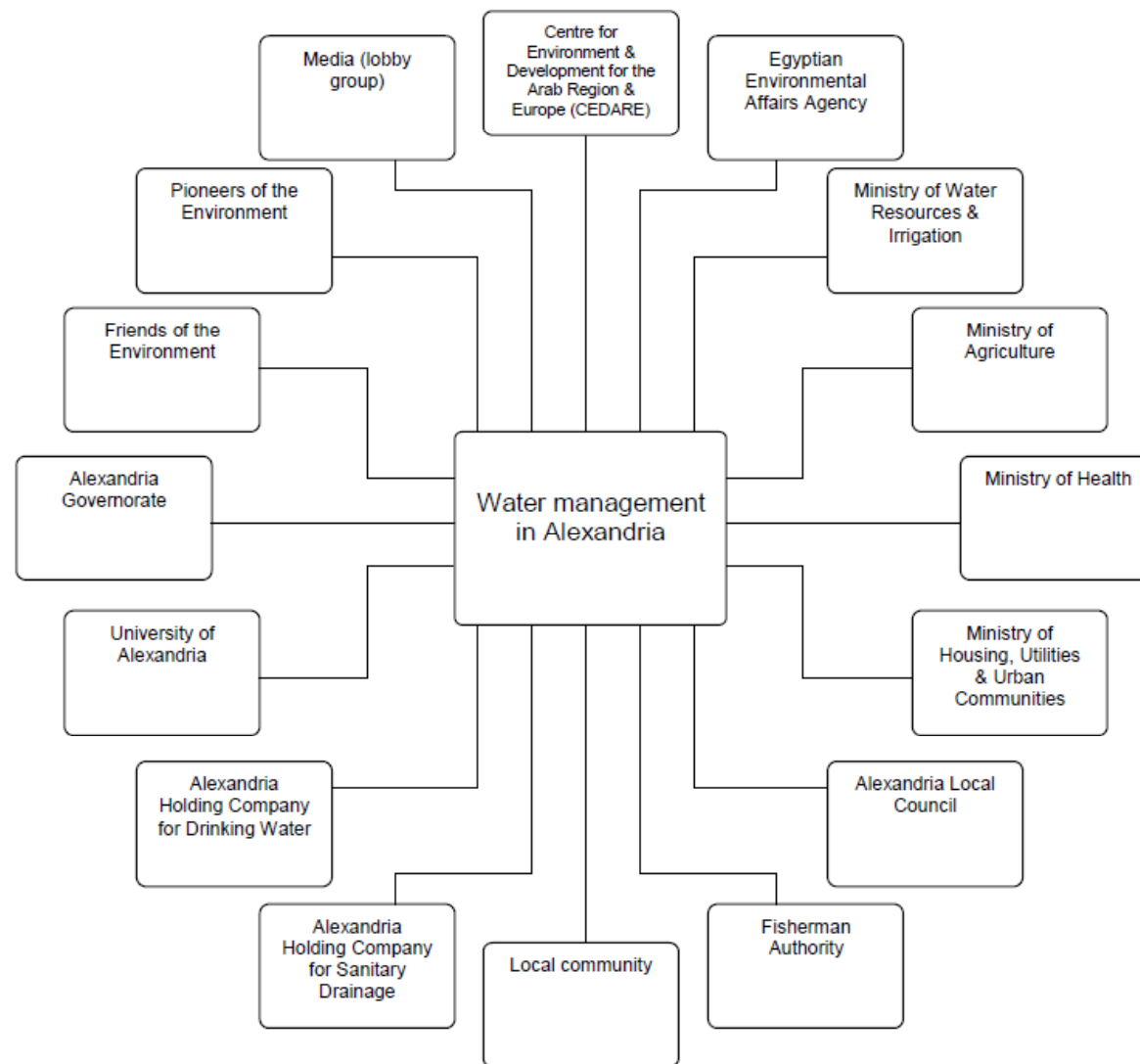
Linkages between the water cycle and other urban management sectors



Stakeholders

- Different spheres of government: regional, national, sub-national, local
- Water utilities and companies
- Domestic users
- The private sector
- Land owners and developers (at the local and catchment levels)
- Universities and research institutes
- Etc.

Water management stakeholders in Alexandria, Egypt



Source: The City Water Information System, EPFL

Barriers to successful stakeholder involvement

- Its value is not appreciated
- Stakeholders are reduced to listeners
- Disadvantaged groups excluded
- Servicing a political agenda
- Lack of coordinating capacity
- One-way relationship with researchers

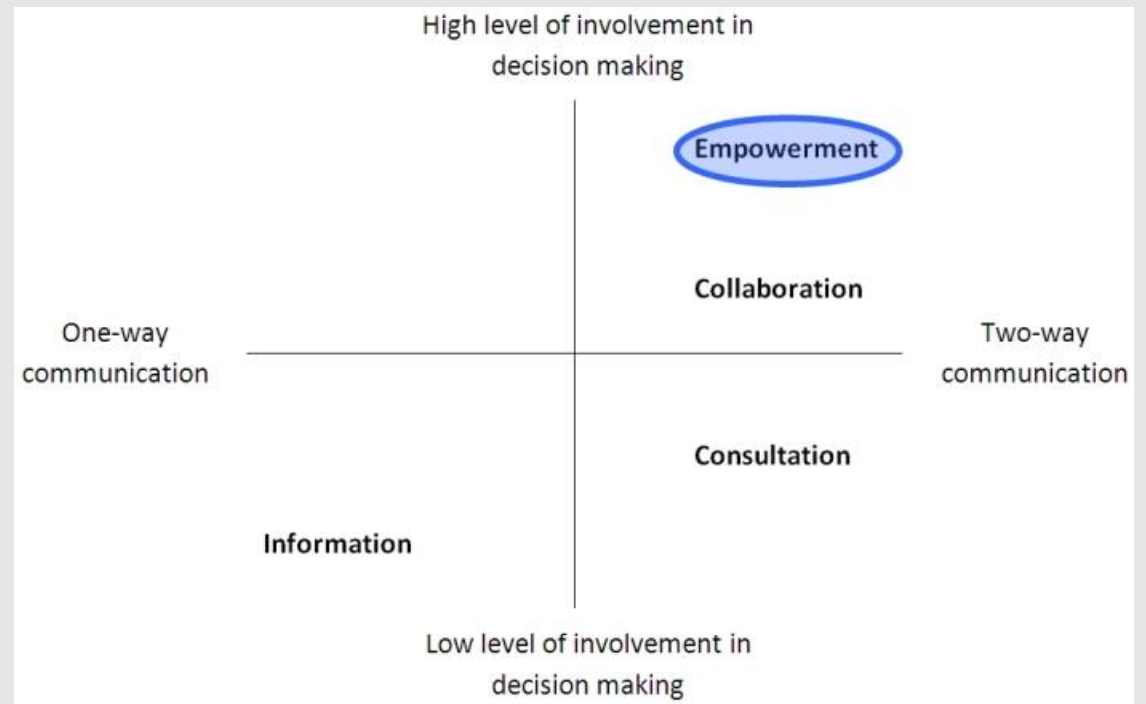
The importance of stakeholder engagement in IUWM

Integration needs collaboration in order to:

- Get a holistic overview of current water uses in the city and develop a common vision
- Balance interests and needs of users
- Create synergies and bundle resources and capacities
- Reduce duplication and contradiction of activities
- Increase awareness, cooperation and ownership
- Ensure selection of appropriate solutions

Different levels of stakeholder involvement

- Information
- Consultation
- Collaboration
- Empowerment



SWITCH Learning Alliances

- Multi-stakeholder platform
- Identifies issues and priorities
- Addresses institutional constraints to integration
- Aims to research, adapt and up-scale innovative approaches that are in demand
- Emphasis on social inclusion



Conclusions

- Urban water management influences, and is influenced by, a wide range of interests
- Stakeholder engagement is often limited to seeking approval for a pre-chosen solution
- Stakeholder engagement is however a crucial aspect of IUWM and more sustainable urban water management
- Local governments are in a strong position to coordinate a stakeholder engagement process

Thank you for your attention

www.switchtraining.eu

