

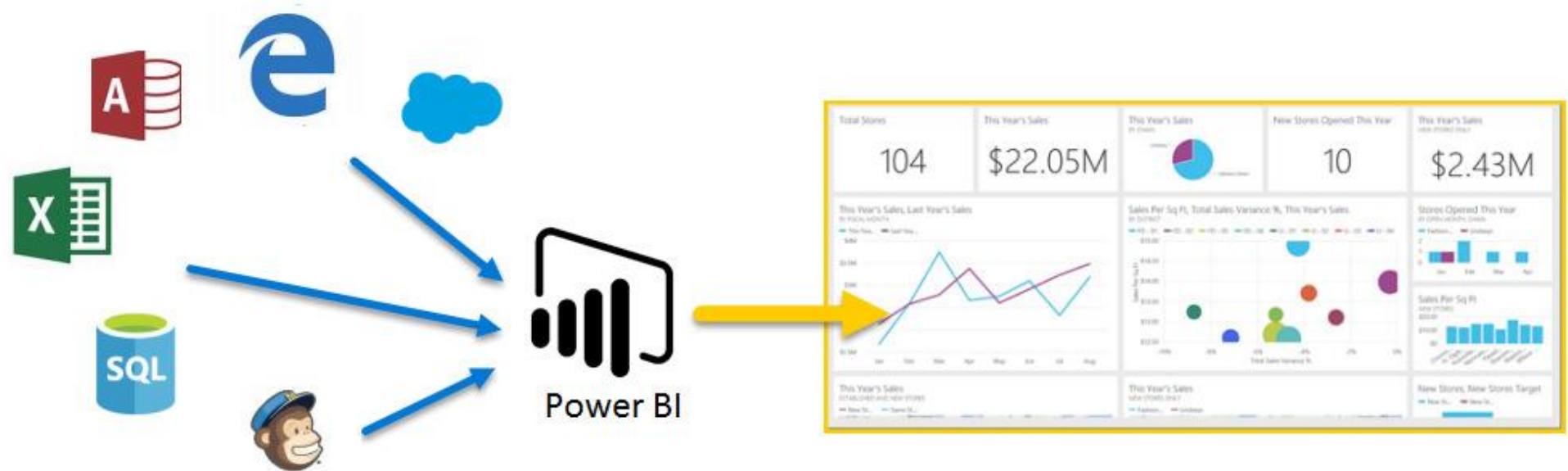
# Power BI

## Overview of Power BI



# What is Power BI

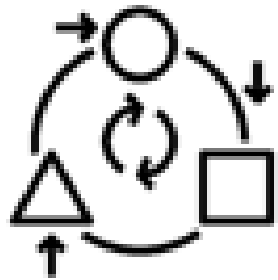
- Power BI is a collection of software services, apps, and connectors.



- Power BI can be simple and fast.

# What does Power BI do?

*Power BI is a business analytics service that delivers insights to enable fast, informed decisions.*



*Transform data into stunning visuals and share them with colleagues on any device.*



*Visually explore and analyze data—on-premises and in the cloud—all in one view.*



*Collaborate on and share customized dashboards and interactive reports.*



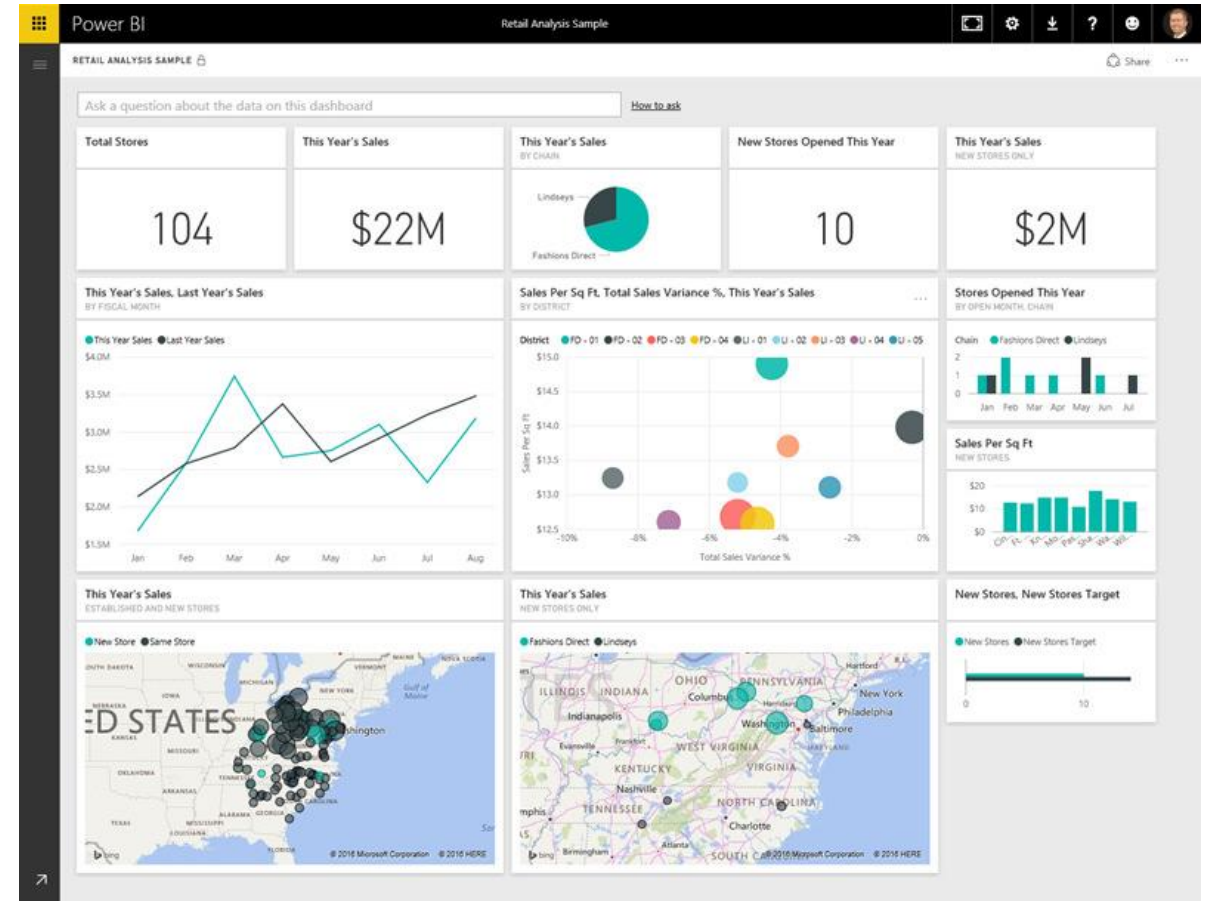
*Scale across your organization with built-in governance and security.*



# Building blocks of Power BI

**Visualizations** (sometimes referred to as a visual) is a visual representation of data, such as chart, a graph, a color-coded map, or other interesting things you can create to represent your data visually

It can be simple or can be visually complex



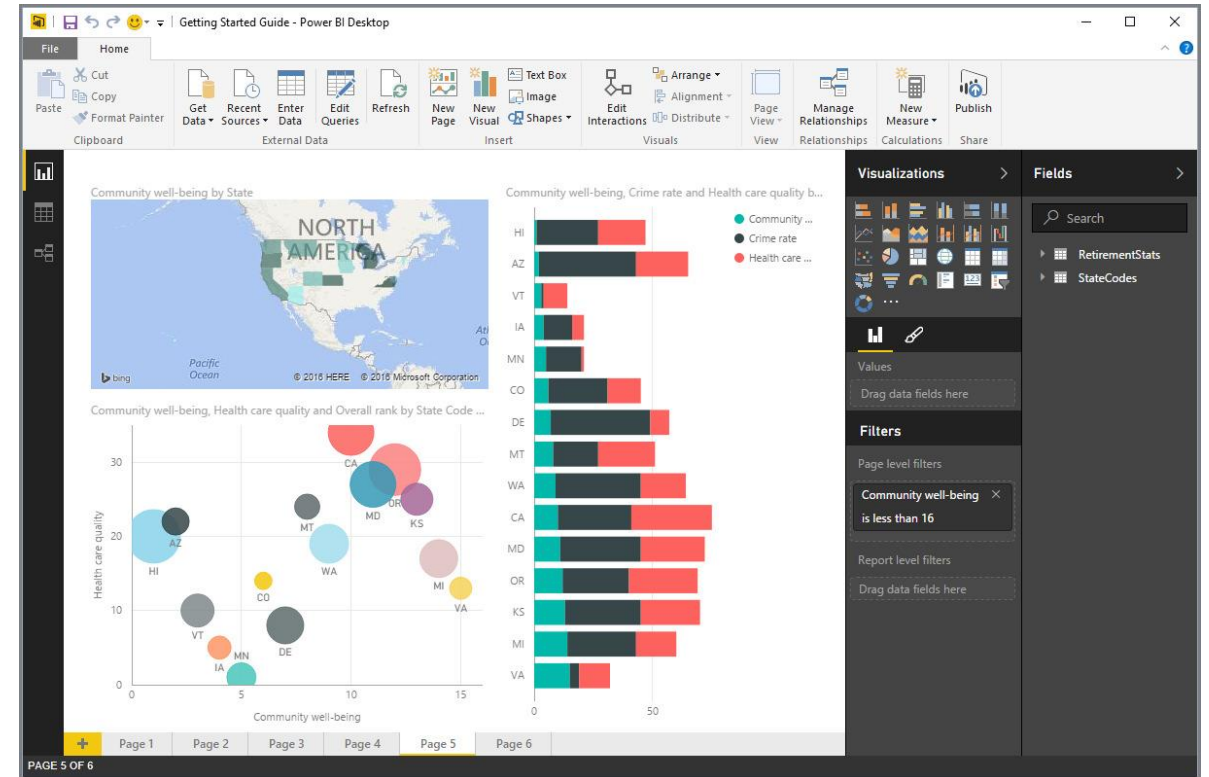
# Building blocks of Power BI

**Datasets** is a collection of data that Power BI uses to create its visualizations. You can have a simple dataset based on a single table from Excel workbook.

	B	C	D	E	F	G	H
1	Year	Month	Month Name	Calendar Month	Births	Births Per Day	Births (Normalized)
2119	2004	1	January	1/1/2004	2,937	94.7	2842
2120	2004	2	February	2/1/2004	2,824	97.4	2921
2121	2004	3	March	3/1/2004	3,128	100.9	3027
2122	2004	4	April	4/1/2004	2,896	96.5	2896
2123	2004	5	May	5/1/2004	3,008	97.0	2911
2124	2004	6	June	6/1/2004	3,047	101.6	3047
2125	2004	7	July	7/1/2004	2,981	96.2	2885
2126	2004	8	August	8/1/2004	3,079	99.3	2980
2127	2004	9	September	9/1/2004	3,219	107.3	3219
2128	2004	10	October	10/1/2004	3,547	114.4	3433
2129	2004	11	November	11/1/2004	3,365	112.2	3365
2130	2004	12	December	12/1/2004	3,143	101.4	3042
2131	2005	1	January	1/1/2005	2,921	94.2	2827
2132	2005	2	February	2/1/2005	2,699	96.4	2892
2133	2005	3	March	3/1/2005	3,024	97.5	2926
2134	2005	4	April	4/1/2005	3,037	101.2	3037
2135	2005	5	May	5/1/2005	3,231	104.2	3127
2136	2005	6	June	6/1/2005	3,163	105.4	3163
2137	2005	7	July	7/1/2005	3,119	100.6	3018
2138	2005	8	August	8/1/2005	3,156	101.8	3054
2139	2005	9	September	9/1/2005	3,439	114.6	3439

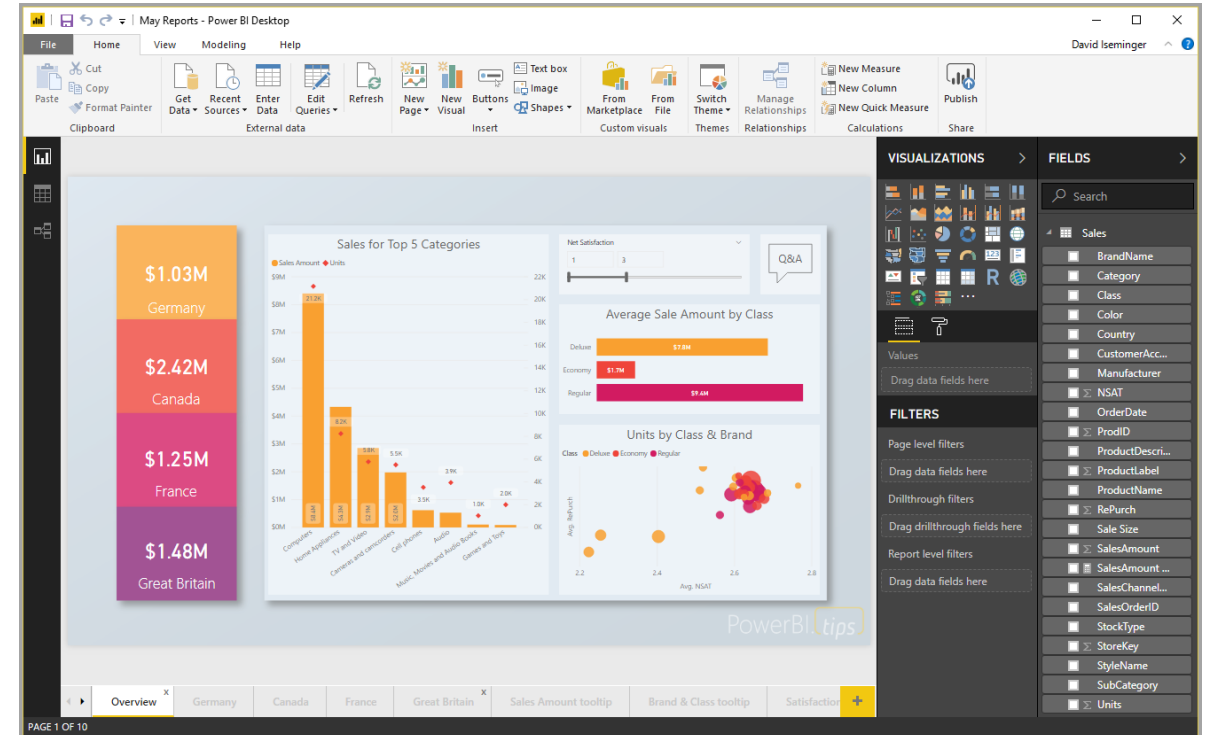
# Building blocks of Power BI

In Power BI, a **report** is a collection of visualizations that appear together on one or more pages. The image shows a report in Power BI desktop – in this case, it's the fifth page in a six-page report.



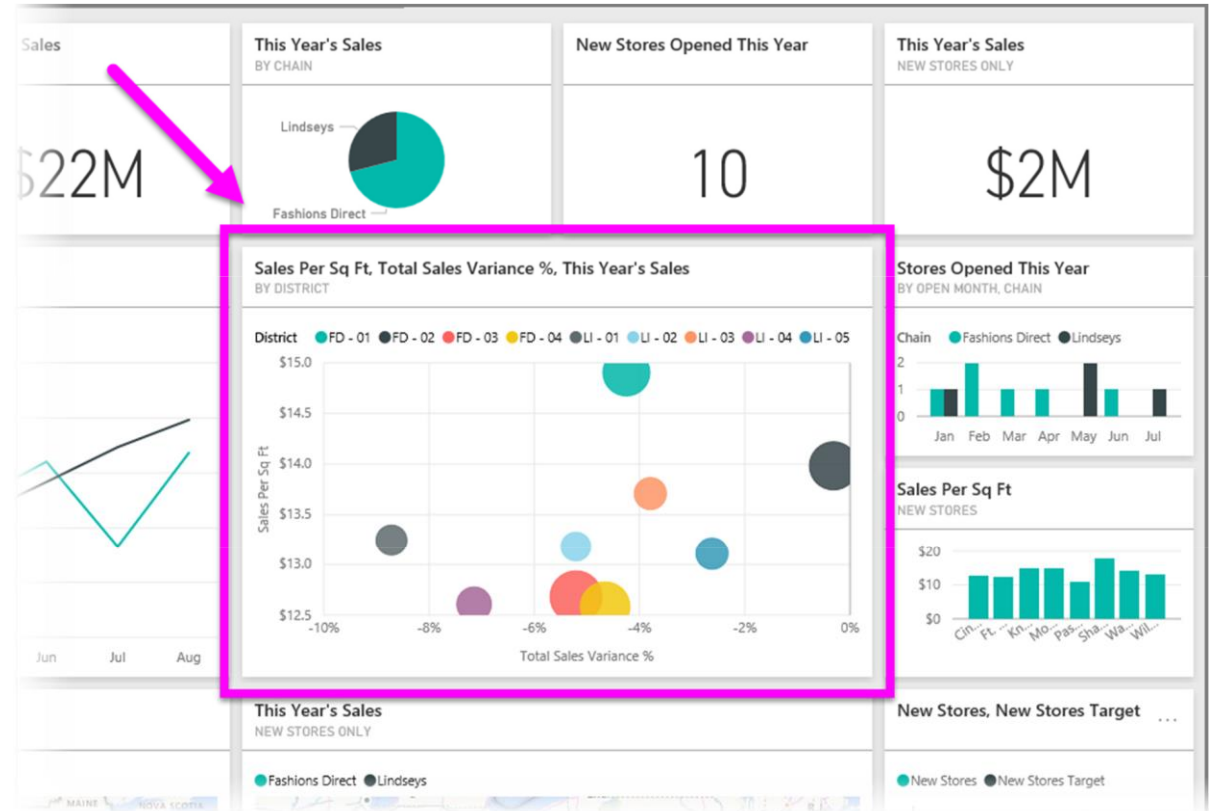
# Building blocks of Power BI

A Power BI **dashboard** is a collection of visuals from a single page that you can share with others.



# Building blocks of Power BI

In Power BI, a **tile** is a single visualization found in a report or on a dashboard. It's the rectangular box that contains each individual visual.





# Visualizations of Data

*How does visualizing data help users?*

*Visualizations allow data to be represented in different ways, leading to insights into data relationships that may not be easily seen.*

*Power BI allows users to create and adjust visualizations based on their own needs as they look at data.*

*Users will be able to look at data from different perspectives and find insights into data relationships that help them make better informed decisions.*



