

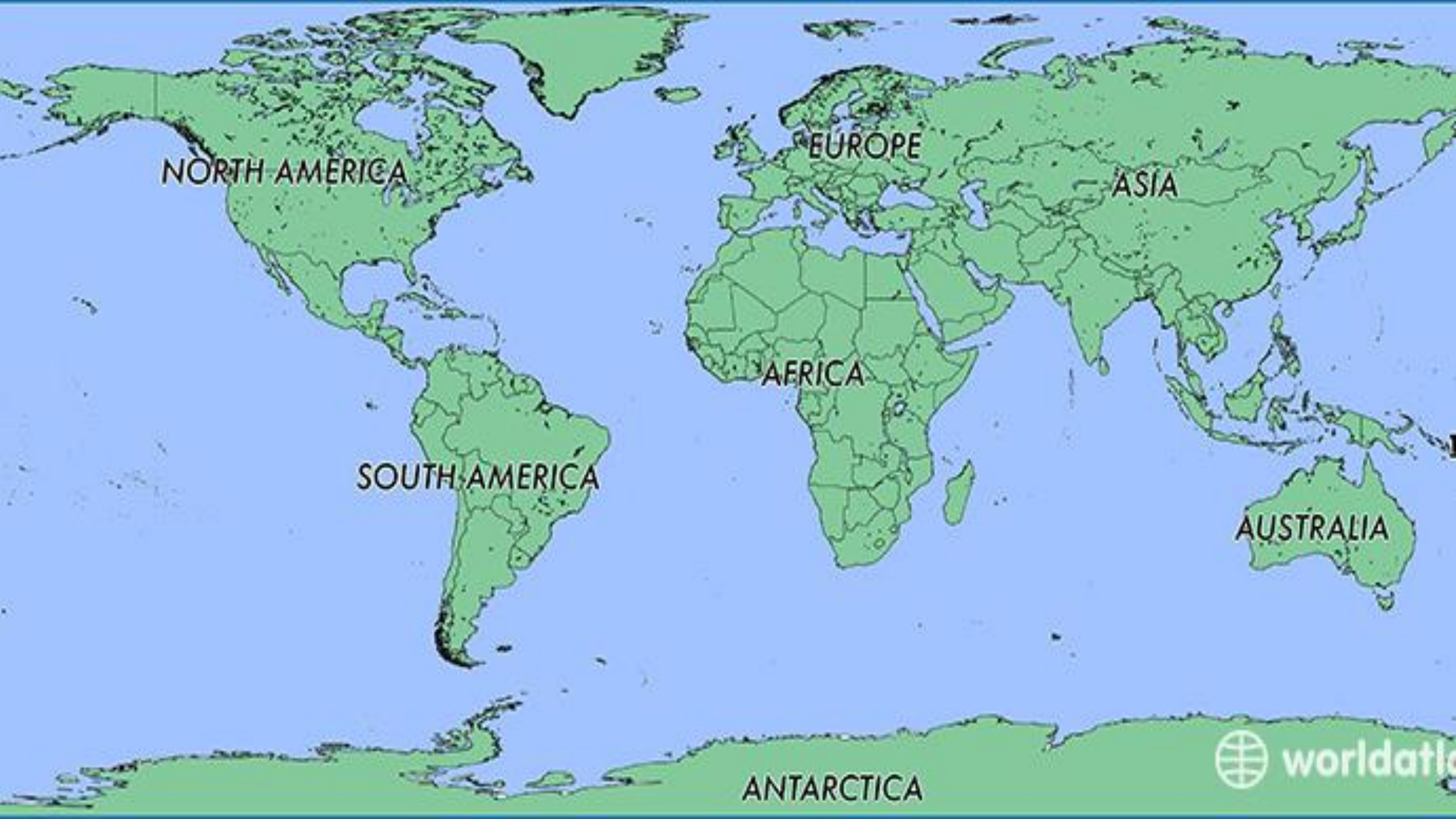
# Innovative Project Story

## TUVALU – Outer Island Maritime Infrastructure (OIMI) Project

Connecting people in the islands of Tuvalu

Siulai Fioana Elisala  
Project Manager- MICRO Project  
Ministry of Communications and Transport





NORTH AMERICA

EUROPE

ASIA

AFRICA

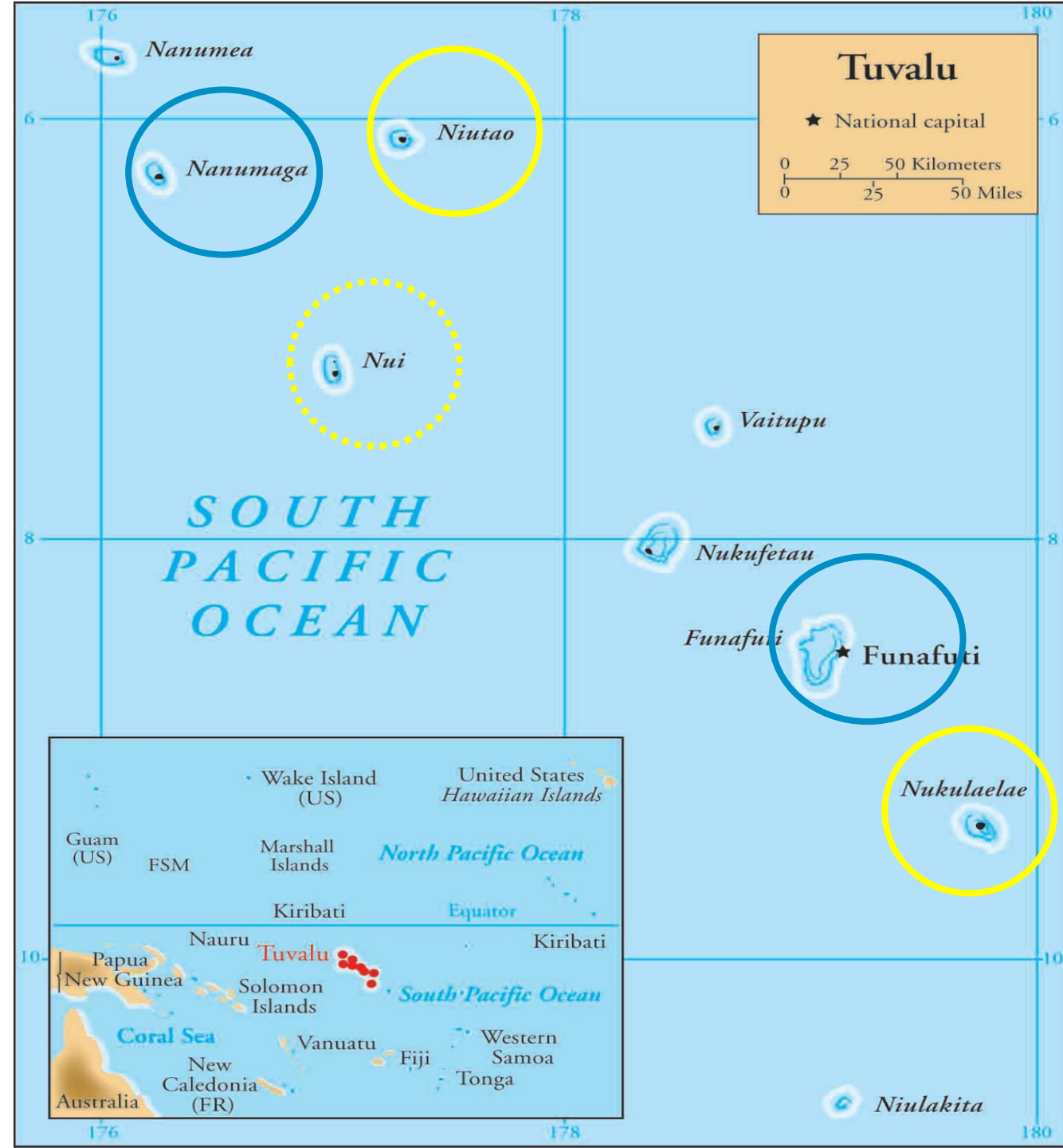
SOUTH AMERICA

AUSTRALIA

ANTARCTICA

# Background Information

- Populations – 11,000
- Land Area – 26 square kilometres
- Total of nine islands
- Capital – Funafuti



## OIMI Project key objectives:

- i) Rehabilitating and improving maritime infrastructure in selected islands of Tuvalu, some of which were damaged by Tropical Cyclone Pam in March 2015
- ii) Improving safety, efficiency, and sustainability of maritime transportation between Funafuti, the capital, and islands.
- iii) The project will improve the connectivity problems that constrain its economic and social development.

Nanumaga Island



Niutao Island



Nukulaelae Island



# 1. Innovation

Designed to adapt impacts of climate change and withstand natural disasters.

Need to minimize construction impacts in a pristine environment.

# 2. Issues

Tuvalu is one of the smallest and most remote ADB member countries with its dispersed geography stretched across 9 outer islands.

Need to provide harbours for the safe movement of people and goods. Lack of harbours is limiting access to economic opportunities and essential social services.



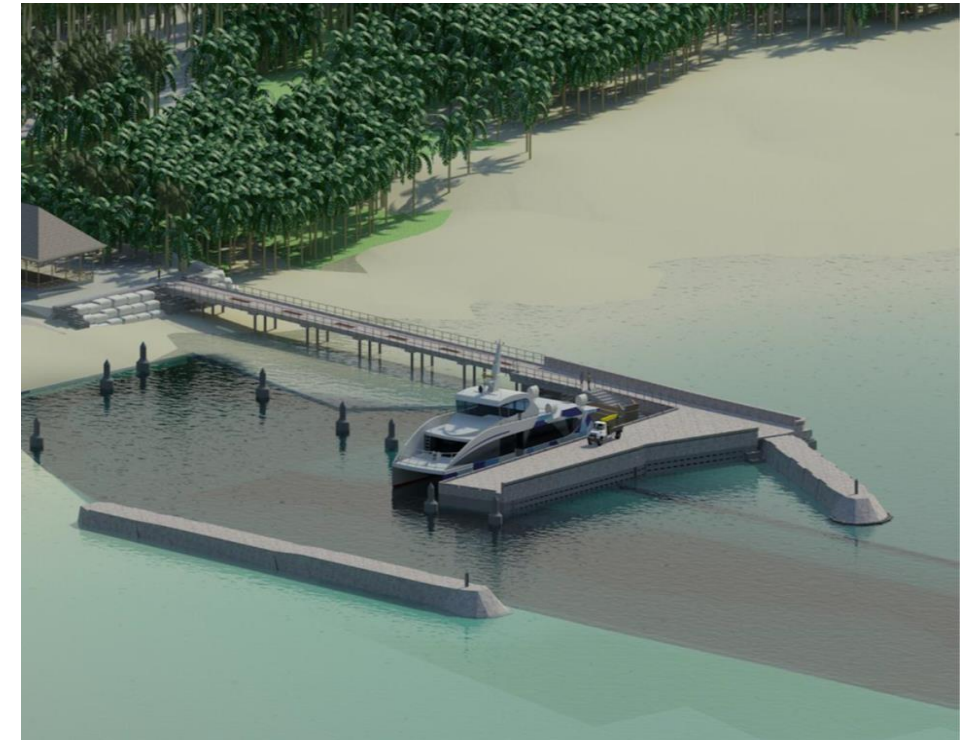
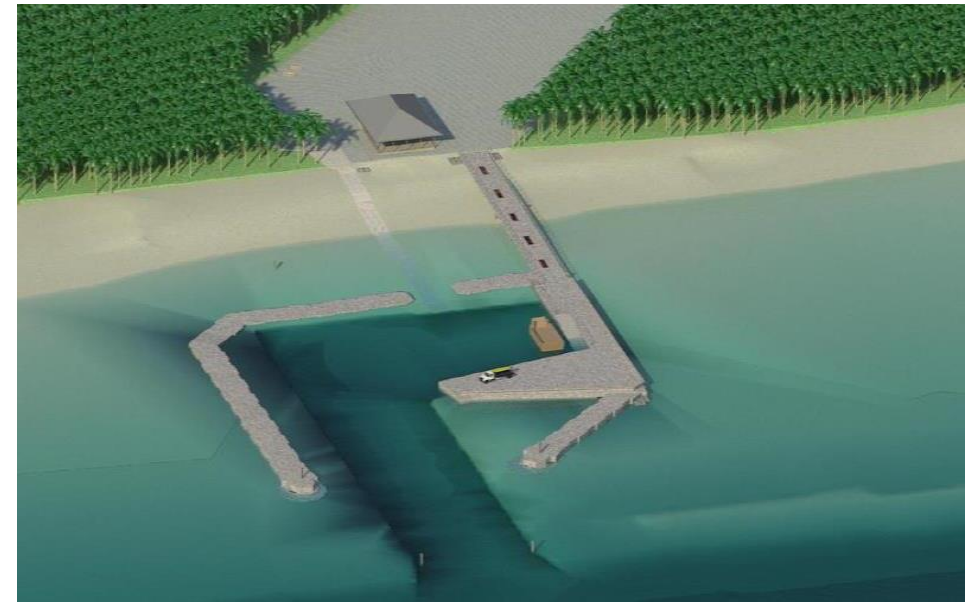




GILTRAP  
F. FERRARI

### 3. Approach / Solution

- i. Construction of harbours in the islands: Nukulaelae, Niutao, Nanumaga and Nui.
- ii. Master plan for future harbour development in islands,
- iii. Strengthening of institutional capacity to maintain the harbours including O&M manuals.





## 4. Story behind the story

Importance to engage with local communities in the islands:

- Small population that is strongly affected during construction
- Need to employ local workers
- Provision of supplies for the workers
- Relationship and communication management between contractors, workers and small population.

