



AASCTF GLP WEBINAR 3 DATA ANALYSIS AND DECISION-MAKING



1 December 2022, 1:00 – 2:30 pm GMT+8, via Zoom

SPEAKER PROFILES

EMILY SCOONES

Head of Digital Innovation (Building Services)
Ramboll UK



Emily Scoones is the Head of Digital Innovation for Building Services for Ramboll UK and a Chartered Structural Engineer.

She is passionate about using technology to aid better collaboration and decision making to develop better outcomes for projects. She has 6+ years' experience of utilising her engineering knowledge in combination with digital design skills to create solutions that add value to projects, clients and society.

She has worked on a mix of traditional engineering projects and as part of the Ramboll Computational Design team looking at the use of novel digital tools as part of the design process. She uses computing power to enable new and more efficient approaches to design and its application to real design problems. She bridges the gaps between technical, commercial and engineering to drive innovative ideas and deliver value for clients and projects.





DR. LIMIN HEE

Director of Research
Centre for Liveable Cities (Singapore)

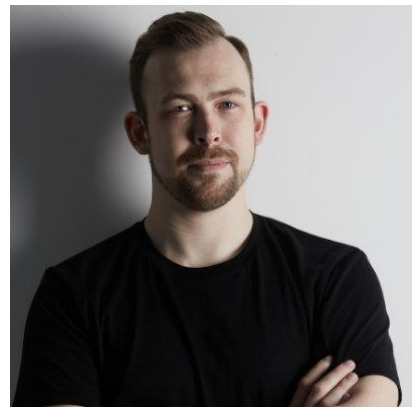


Dr Limin Hee is Director of Research at Singapore’s Centre for Liveable Cities (CLC), a nexus and knowledge centre for liveable and sustainable cities, where she focuses on research strategies, content development and international collaborations. CLC research is premised on deep understanding of urban systems and how to derive integrated solutions for cities. She played similar leading research roles at the National University of Singapore School of Design and Environment, as well as at the Centre for Sustainable Asian Cities and the Asia Research Institute.

MODERATOR PROFILE

ANDY BRAHNEY

Head of SMART (MEAP),
Ramboll Singapore



As Head of SMART (MEAP), Andy Brahney is responsible for leading the SMART Engineering Consultancy services in the Middle East & Asia-Pacific region. As a co-founder of the SMART Engineering service, he has a passion for creating new & innovative solutions to enable clients to meet their business goals while providing a sustainable, more livable society. He recently co-created the post-pandemic workplace design service at Ramboll which utilizes a combination of technology coupled with multi-disciplinary design interventions to adapt our built environment in response to the pandemic.

